



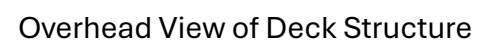
Deck Project 1314 / 1316 Saint James Ct. Wauwatosa, WI 53213

There was a wheelchair ramp that went back and forth across the front of our duplex (9' Wide x 20' Long). It was collapsing and moving away from the building foundation, so it was removed when we updated our driveway from asphalt to concrete along with a new retaining wall. Our current project is to add a free-standing deck that will be approx. 7' wide x 18' long across the front of the duplex. The deck will rise approx. 32 inches above the concrete drive and will provide access to the lower unit front door.

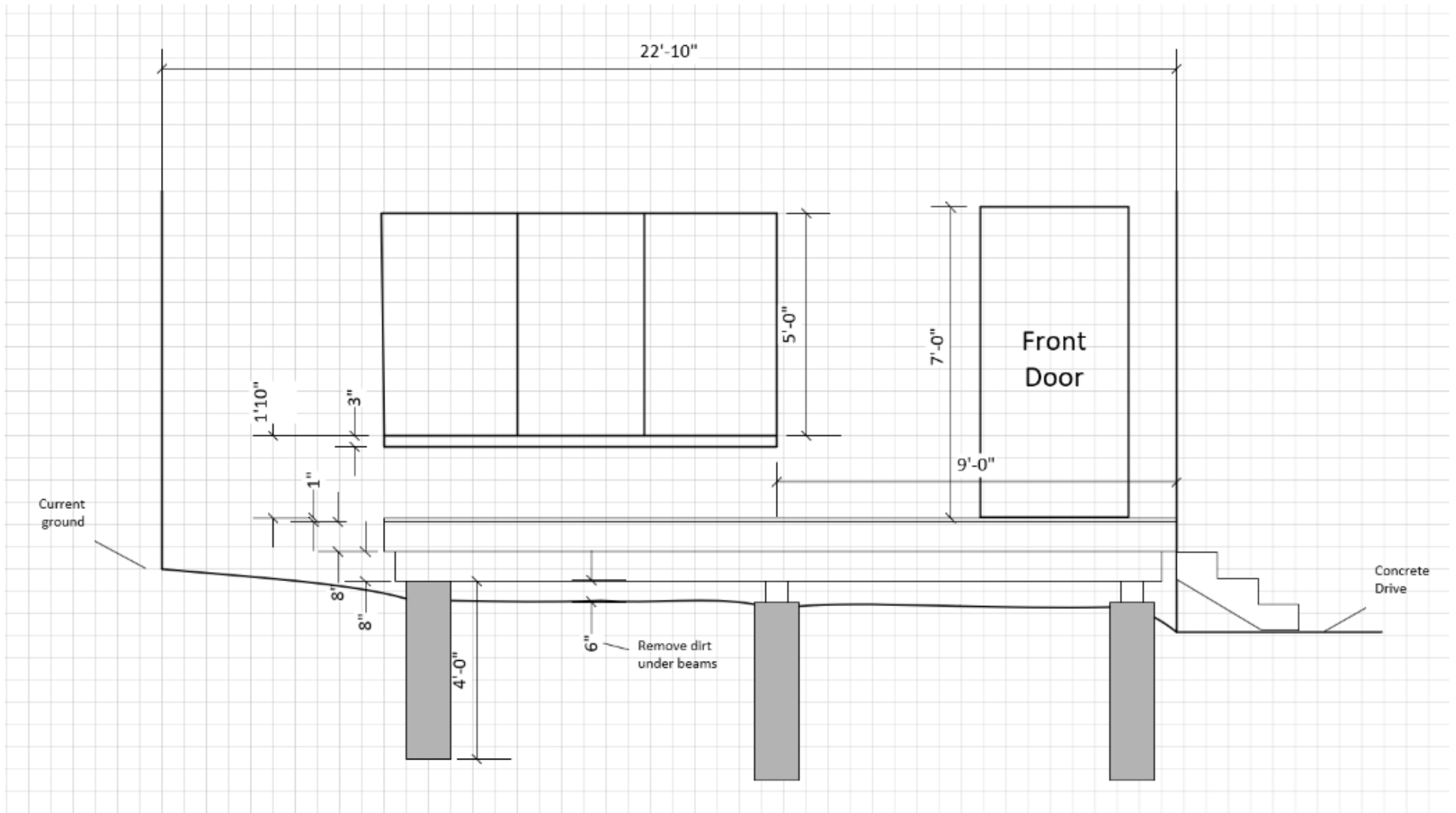
Details are as follows:

- 3 footings near house 48" deep – 12" diameter concrete piers
- 3 outer footings DP50 Dimond Piers
- Footings to be placed 1 ft o.c. from outside edges
- 2 Load beams to be 3 ply 2 x 8, set on 6 x 6 post bracket on footings and 6 x 6 posts
- Post bracket to be installed at post to beam connection
- Load beams to be fastened together with structural screws at staggered 16" o.c. screw pattern
- 2 ply 2 x 8 Rim joists on all 4 sides
- 2 x 8 joists to be installed 12" o.c., with joist hangers on each end and hurricane clip to both load beams
- 3 step stairs 42" wide with 4 stringers with an approx. 6 5/8 rise. Stairs landing on new concrete driveway slab

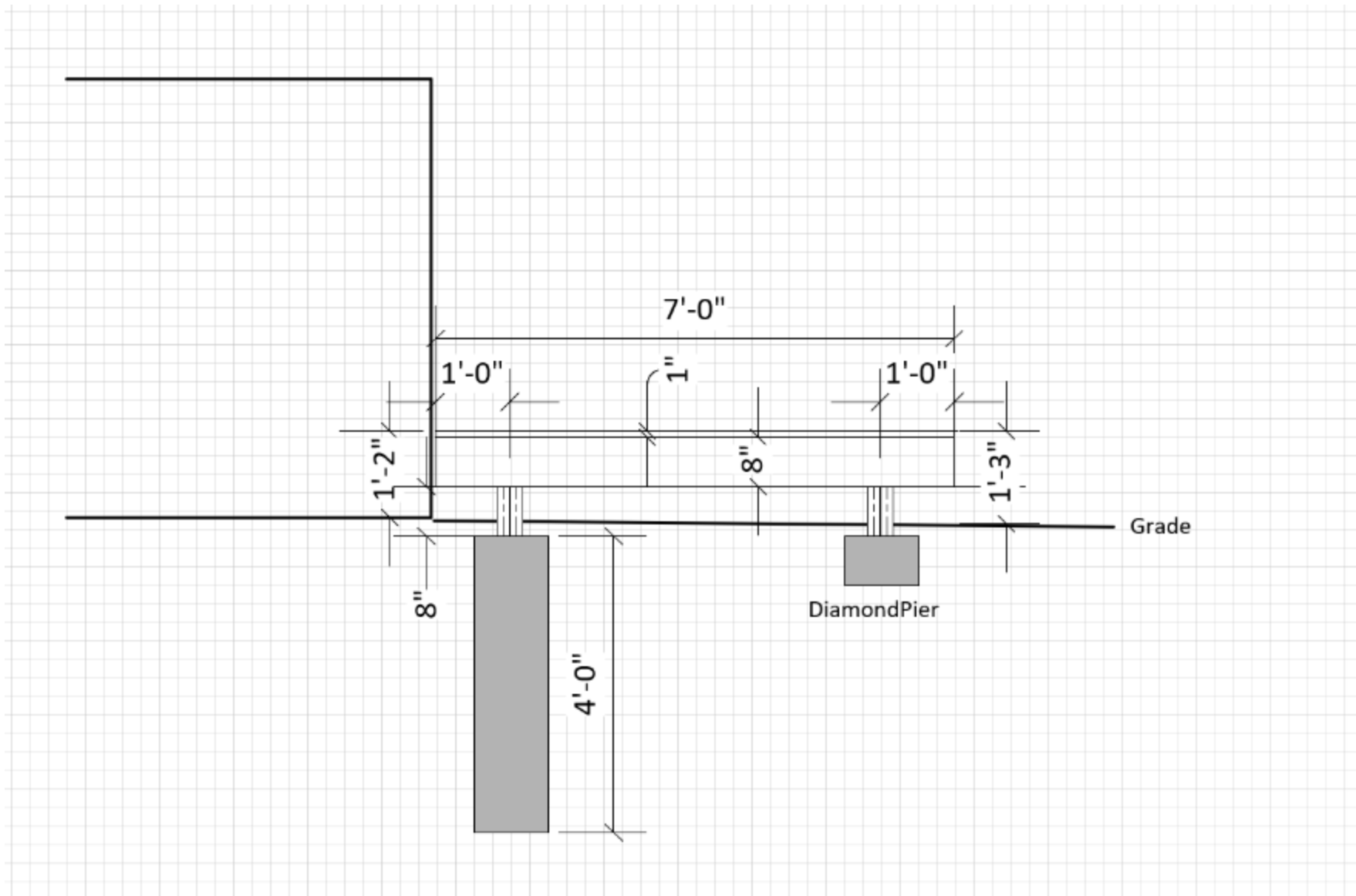
- Solid edge composite deck boards will be installed on frame on all 4 sides
- Grooved edge composite deck boards to be installed on deck with hidden fasteners
- Composite facia will be installed on 3 visible sides of deck rim joists, visible side of load beam, Stair risers and 2 visible sides of stringers
- Railings to be aluminum posts with cable rail on deck and stairs



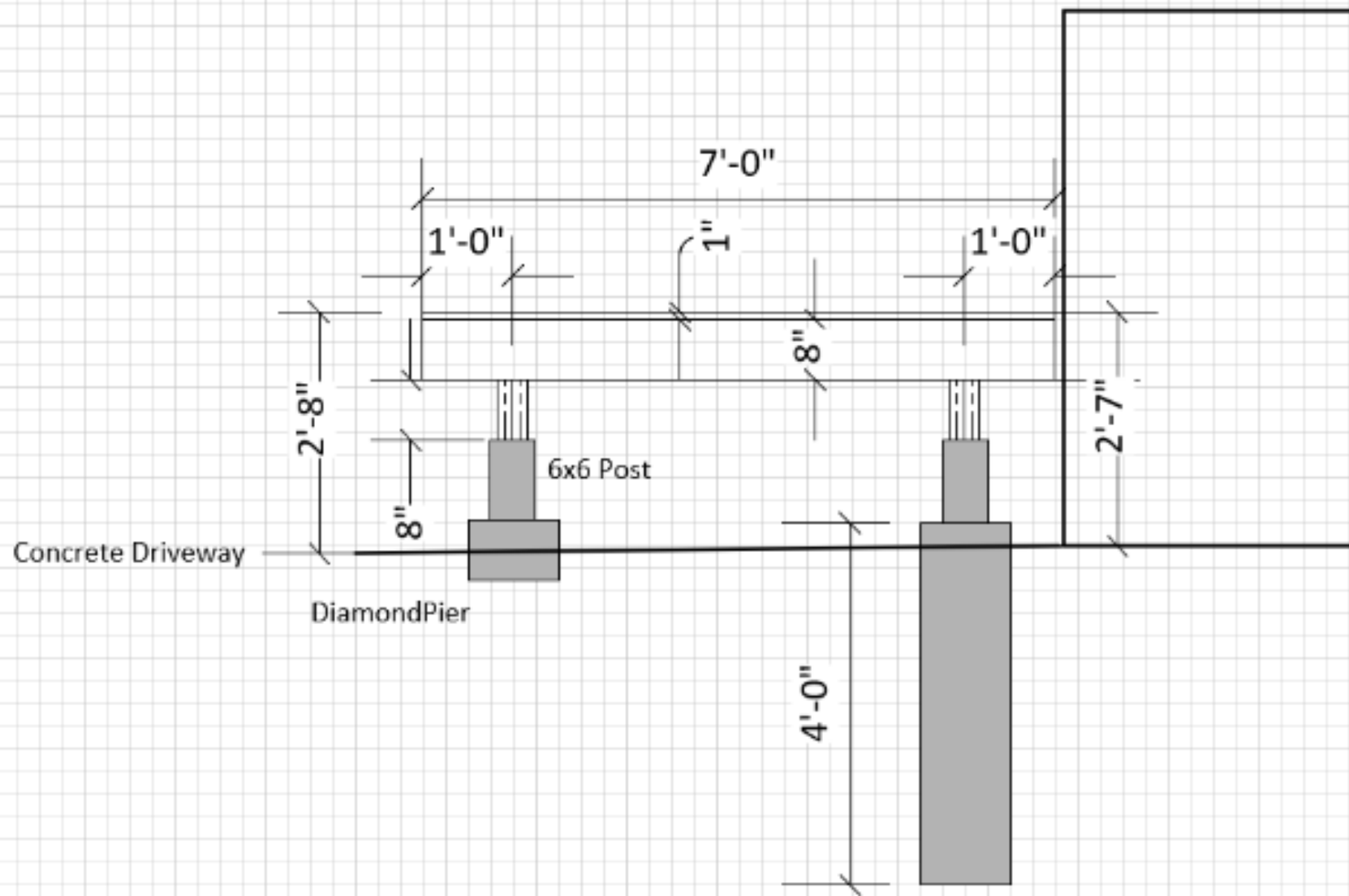
Overhead View of Deck Structure



West Side of Property



North Side of Property



South Side of Property