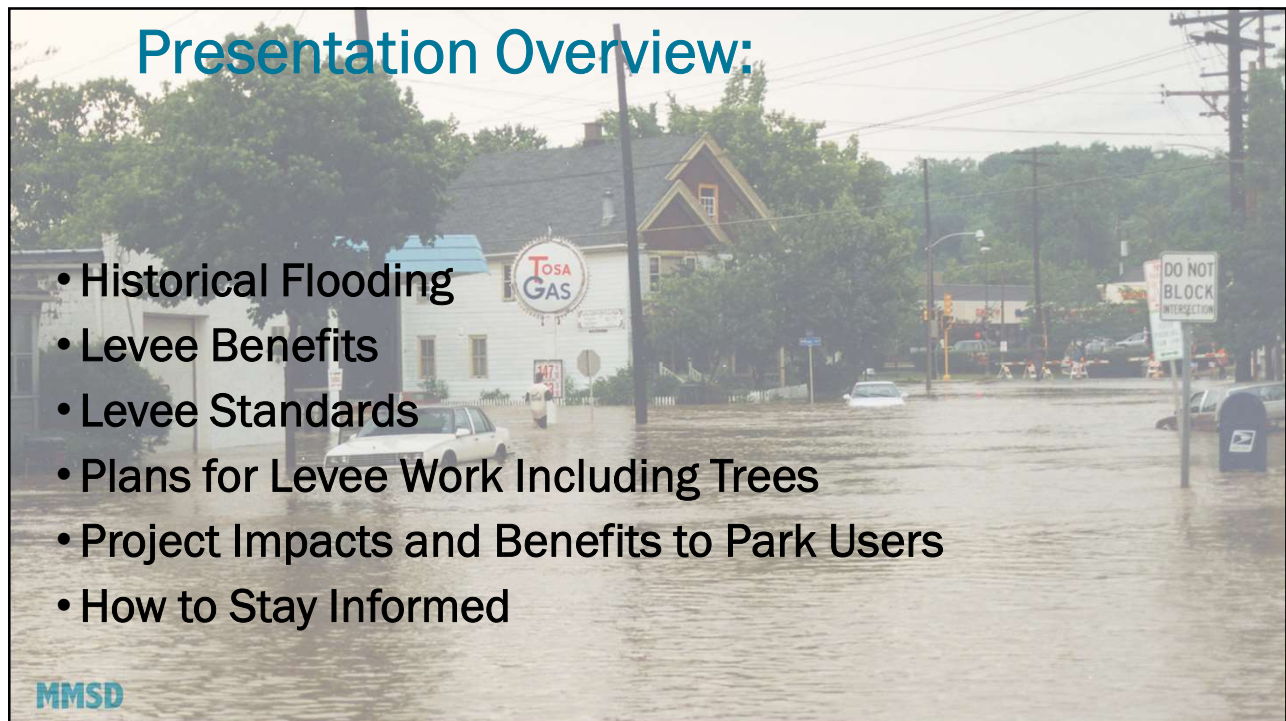




1



2

Hart Park Neighborhood – A History of Flooding



MMSD



3

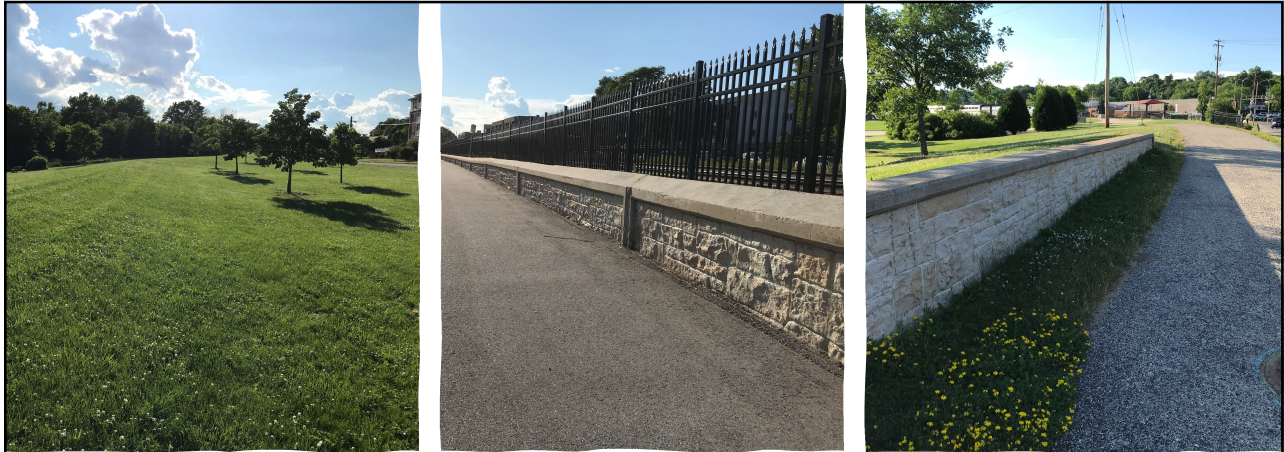
1997 and 1998 Back-to-Back Flooding

Catalyst for the
Hart Park Levee
Project



MMSD

4



What does a Levee do?

- A levee holds back floodwaters
- Built of earth or reinforced concrete

5



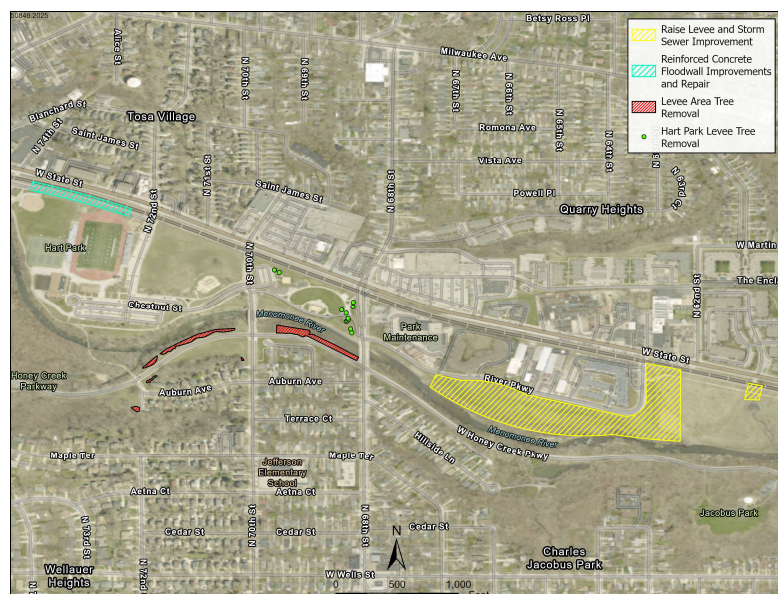
6



7

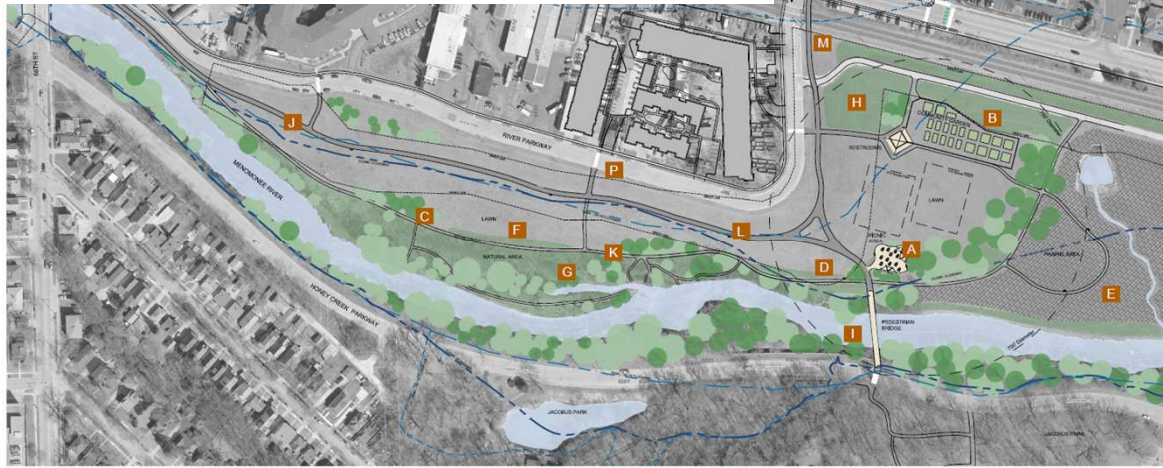
The Hart Park Levee Reduces Flood Risk Today With Improvements the Levee will Meet FEMA Standards and Revise Floodplain Map

- Levee & floodwall height improvements
- Storm sewer improvements
- Pipe rehabilitation improvements
- Tree removal where too close to meet levee standards
- First of several planned construction contracts



8

Levee Improvements Coordinated with “Hart Park East” Plan



Goals and Opportunities

- Provide a variety of passive recreation uses for a range of users
- Increase connectivity to surrounding neighborhoods, including pedestrian bridge to Jacobus Park
- Create safer crossings at 68th Street and State Street. Safety improvements to include rapid flashing beacons and bump-outs where appropriate to decrease crossing distance.
- Increase accessibility, including access to the river
- Maintain and enhance native habitats through invasive removal and strategic planting of native vegetation

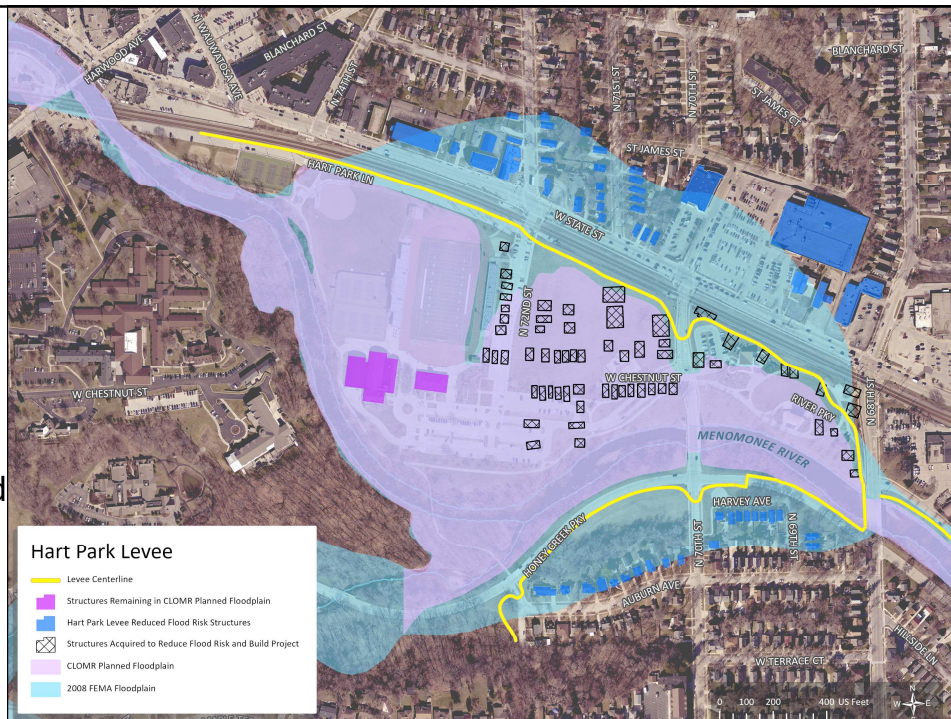
HART PARK - EAST Conceptual Site Plan

- | | | | |
|---------------------------|-----------------------|----------------------------|---|
| A Picnic Area | E Prairie Area | I Pedestrian Bridge | M Signage |
| B Community Garden | F Lawn Area | J Multi-use Trail | N 68 th Street Crossing |
| C Hammock Garden | G Natural Area | K Nature Trail | O 63 rd Street Crossing |
| D Public Art | H Low Mow Area | L Benches - Seating | P Mid-block Crossing |

9

Levee Benefits 130+ Properties

- Reduces flood risk/damage.
- Goal to eliminate flood insurance requirement; FEMA recommends flood insurance.
- Goal to remove limitations on home/business reinvestment.

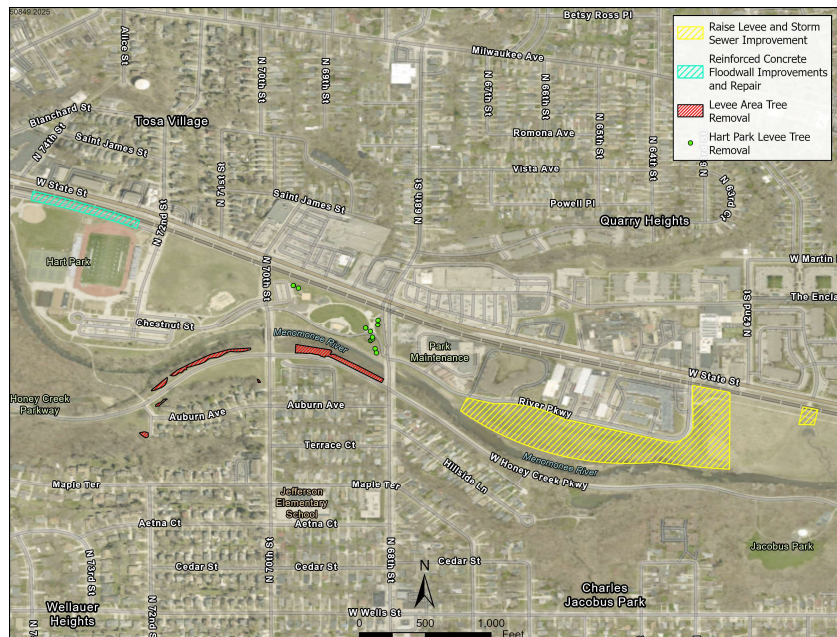


10

Construction Impacts and Benefits to Park Users

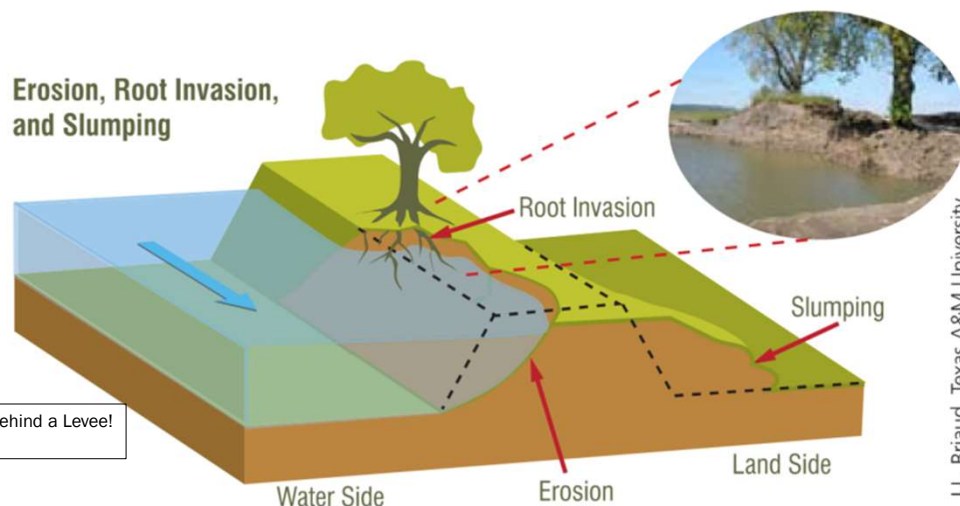
- Hart Park Lane
 - Temp parking impact
- Hart Park East
 - Temp impact; new recreation trail
- Honey Creek Parkway & Bandshell Area
 - Minor impacts from tree removal
- Future Improvements
 - Storm sewers & pipe rehab
 - TBD – 68th Street Bridge area

MMSD



11

Levee Standards Exist to Protect the Levee



Graphic source: So, You Live Behind a Levee!
ASCE 2009

MMSD

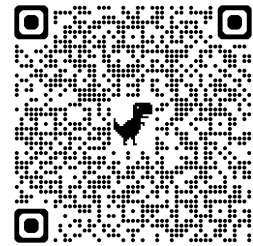
J.L. Briaud, Texas A&M University

12



Interested in keeping updated about the Hart Park Levee Accreditation?

- Sign up for email updates at the project webpage <https://www.mmsd.com/hart-mke-accreditation>
- Leave a comment or question at the webpage.



MMSD

13



Thank you for your interest in the Hart Park and Western Milwaukee Levee System Accreditation Project!

14