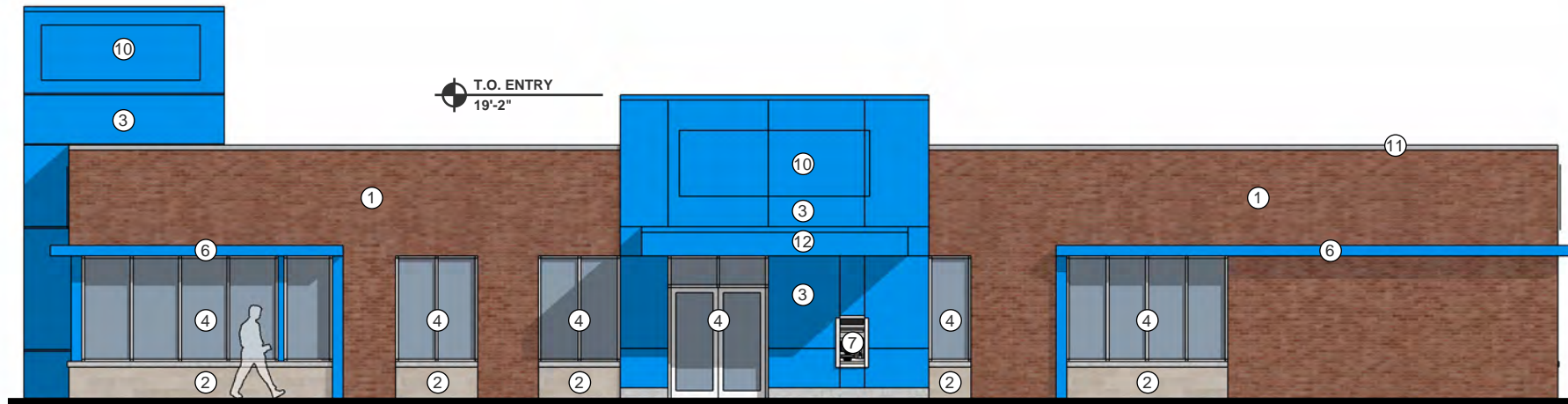
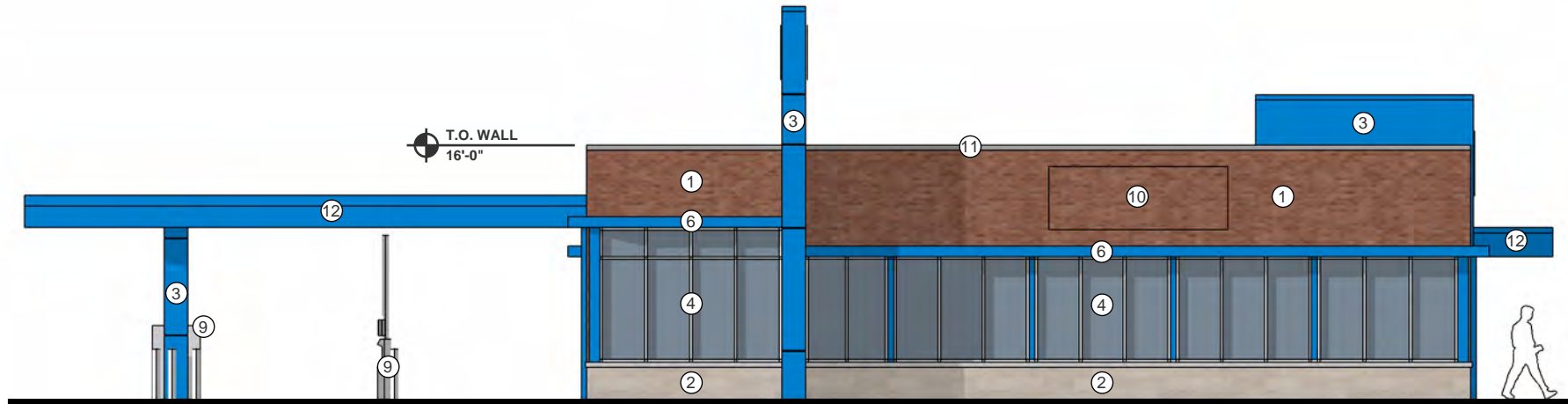


BUILDING 2

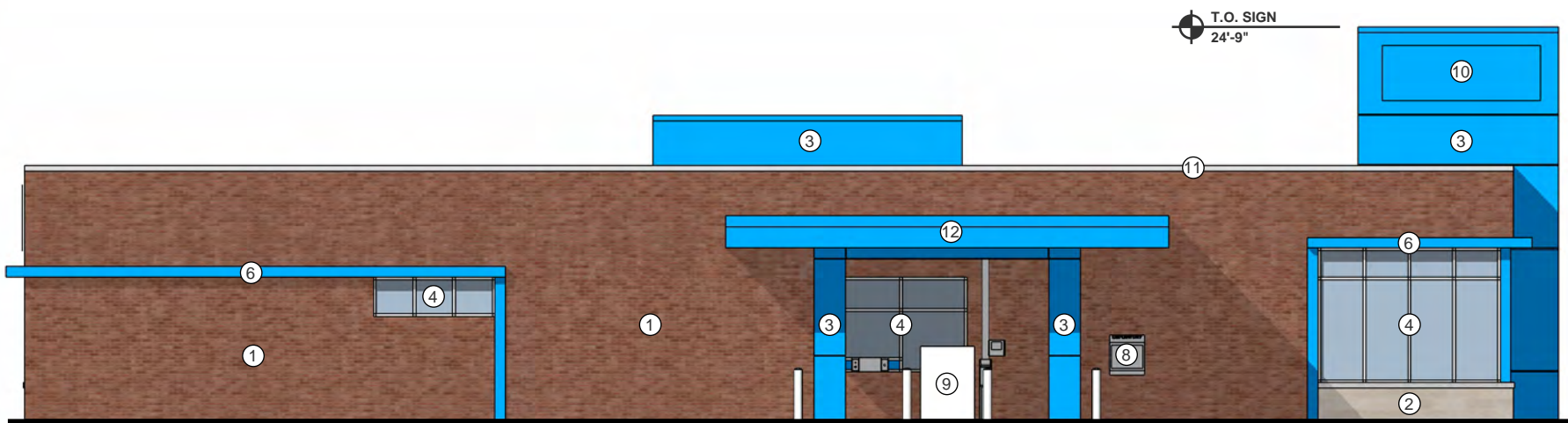
West
3/32" = 1'-0"



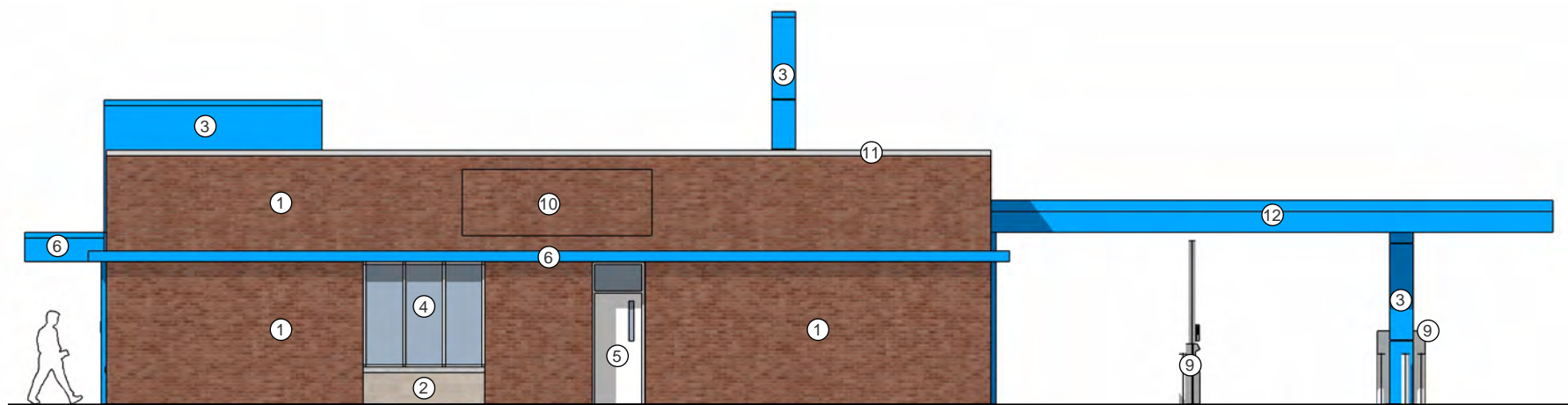
North
3/32" = 1'-0"



East
3/32" = 1'-0"



South
3/32" = 1'-0"



BUILDING 2 - ELEVATION NOTES

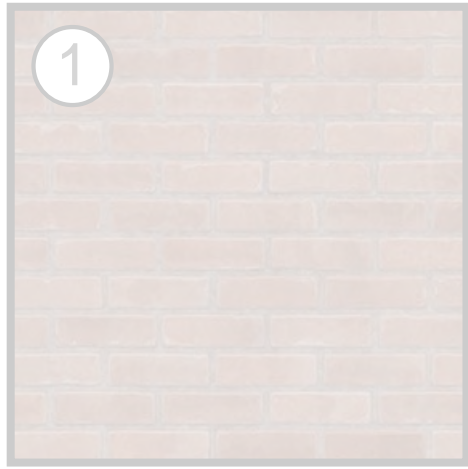
- 1 Brick: color red
- 2 Burnished stone block w/ stone sill: color cream
- 3 Architectural metal panel: color blue
- 4 Aluminum storefront window system w/ clear glass: clear anodized
- 5 Painted hollow metal door w/ vision panel: color white
- 6 Metal accent brow: color blue
- 7 Walk-up ATM
- 8 Depository
- 9 Bank drive-thru equipment by owner
- 10 Tenant signage for approximate location, final approval at later date
- 11 Brake metal coping: color silver
- 12 Metal canopy: color blue

Notes do not align between buildings
Scale does not align between buildings

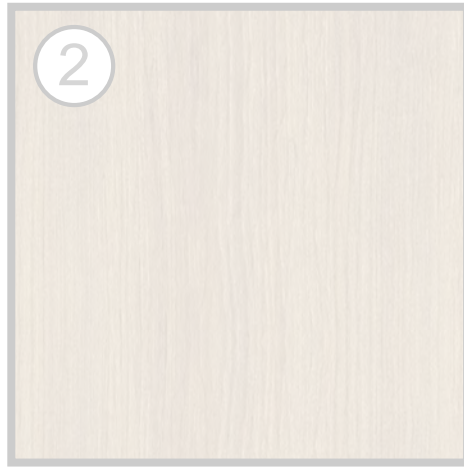
Artistic and/or computer renderings are not a contractual representation of the finished product and GROTH Design Group makes no warranties and representations that the depictions of such renderings will be replicated in the finished product. Client acknowledges and agrees that the terms of the contract, not the renderings shall control.

MATERIAL PALETTE

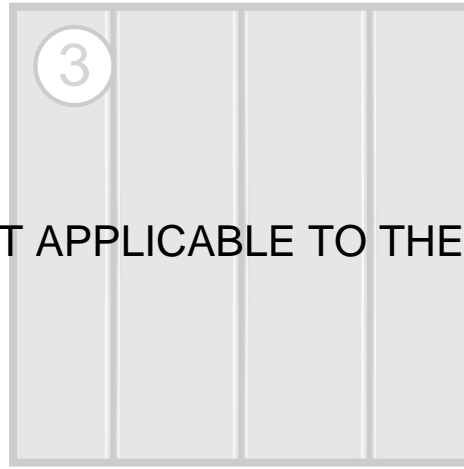
Building 1



Brick: color red



Wood-look phenolic panel



Corrugated metal panel:
color gray



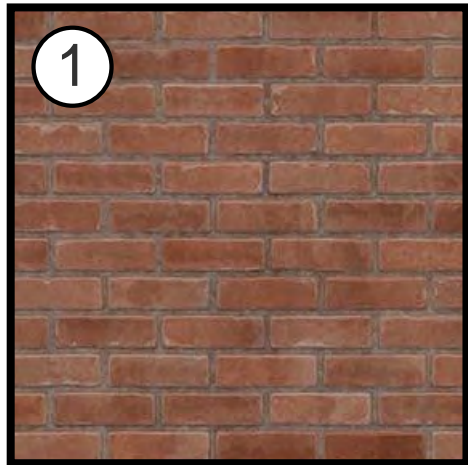
Clear/Spandrel glass in aluminum
storefront: color dark bronze



Painted metal: color dark gray

NOT APPLICABLE TO THE BANK BUILDING

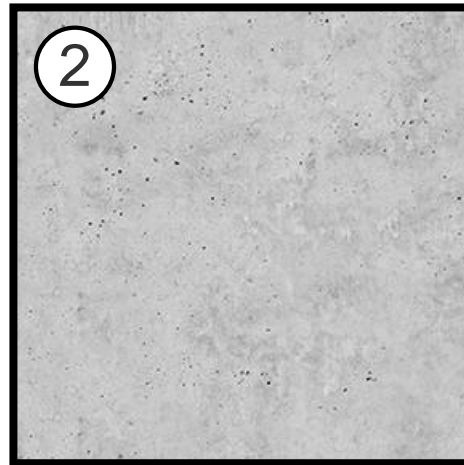
Building 2



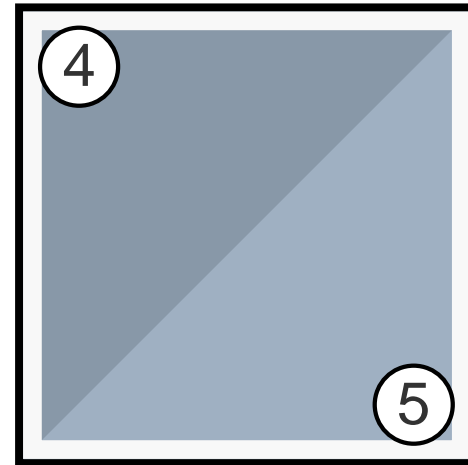
Brick: color red



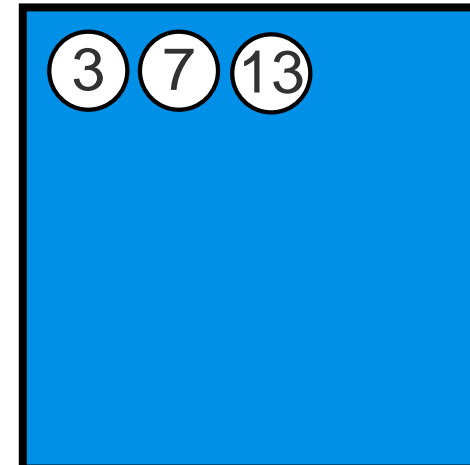
Burnished stone block:
color cream



Stone sill

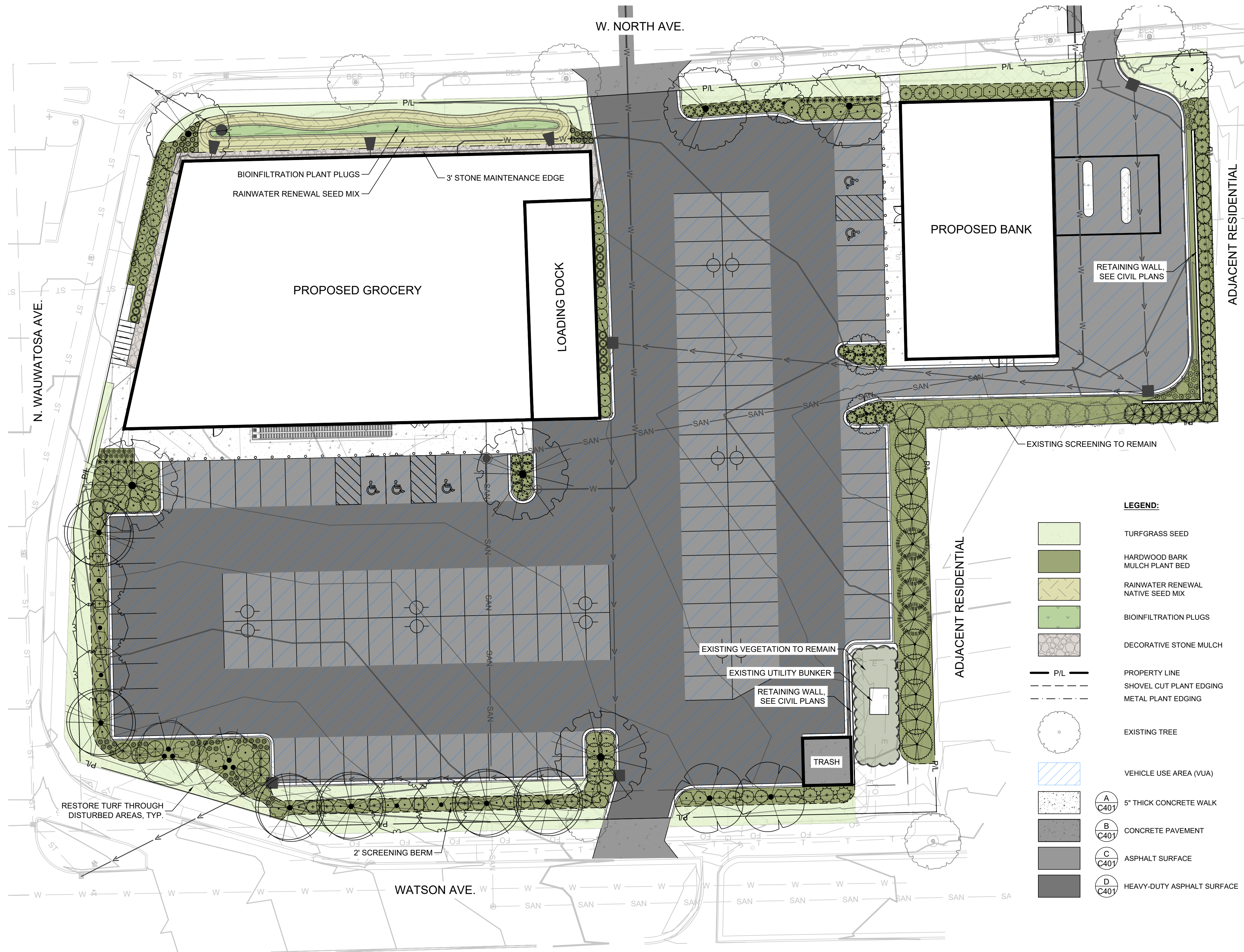


Clear/Spandrel glass in aluminum
storefront: color clear anodized



Architectural metal panel:
color blue

Artistic and/or computer renderings are not a contractual representation of the finished product and GROTH Design Group makes no warranties and representations that the depictions of such renderings will be replicated in the finished product. Client acknowledges and agrees that the terms of the contract, not the renderings shall control.



LEGEND:

- TURFGRASS SEED
- HARDWOOD BARK MULCH PLANT BED
- RAINWATER RENEWAL NATIVE SEED MIX
- BIOINFILTRATION PLUGS
- DECORATIVE STONE MULCH
- PROPERTY LINE
- SHOVEL CUT PLANT EDGING
- METAL PLANT EDGING
- EXISTING TREE
- VEHICLE USE AREA (VUA)
- 5" THICK CONCRETE WALK (A C401)
- CONCRETE PAVEMENT (B C401)
- ASPHALT SURFACE (C C401)
- HEAVY-DUTY ASPHALT SURFACE (D C401)

Site Landscaping Requirements				
Zoning: General Commercial (C2)				
Category	Requirements			
	Requirement	Public VUA Frontage	Quantity Required	Quantity Provided
Perimeter Vehicle Use Area (VUA)	2 Deciduous Trees per 50 LF	444 LF	18 Trees	18 Trees
	8 Shrubs per 50 LF		72 Shrubs	72 Shrubs
Interior Vehicle Use Area (VUA)	10% of Interior VUA Landscaped	Interior VUA	Landscaping Required	Landscaping Provided
	1 Shade Tree per 180 SF of Interior Landscape Area	48,103 SF	4,810 SF	1,659 SF*
		Interior Landscape Area	Quantity Required	Quantity Provided
		4,810 SF	27 Trees	6 Trees*

*NOTE: INTERIOR VUA LANDSCAPING PROVIDED TO GREATEST EXTENT POSSIBLE DUE TO SITE RESTRICTIONS

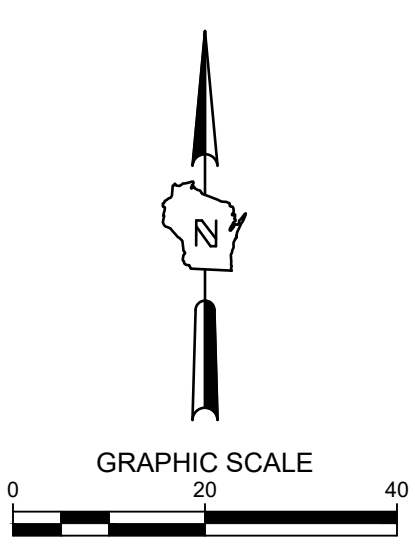
LANDSCAPE GENERAL NOTES:

- VERIFY EXISTING AND PROPOSED CONDITIONS, UTILITIES, PIPES, AND STRUCTURES, ETC. PRIOR TO BIDDING AND CONSTRUCTION.
- INSPECT THE SITE PRIOR TO COMMENCING WORK. DOCUMENT IN WRITING AND PHOTOGRAPH EXISTING CONDITIONS WITHIN, AND IN AREAS ADJACENT TO THE LIMITS OF CONSTRUCTION. THE LANDSCAPE CONTRACTOR IS RESPONSIBLE FOR ANY DAMAGES NOT DOCUMENTED IN THE PHOTOGRAPHS PRIOR TO COMMENCEMENT OF DEMOLITION ACTIVITIES.
- COORDINATE THE INSTALLATION OF PLANT MATERIAL WITH INSTALLATION OF ADJACENT PAVEMENTS, DRAINAGE, CURB RELATED STRUCTURES WITH OTHER TRADES.
- RESTORE AREAS OF THE SITE, OR ADJACENT AREAS, WHERE DISTURBED. DAMAGE CAUSED DURING LANDSCAPE INSTALLATION TO EXISTING CONDITIONS AND IMPROVEMENTS IS THE RESPONSIBILITY OF THE LANDSCAPE CONTRACTOR.
- CONTRACTOR SHALL THOROUGHLY REVIEW ALL SPECIFICATIONS RELATED TO TREE PROTECTION, SOIL PREPARATION, TURF, GRASSES AND PLANTS. THESE SECTIONS PROVIDE ADDITIONAL INFORMATION ON MATERIALS AND SET STANDARDS FOR QUALITY AND INSTALLATION REQUIREMENTS.
- PROVIDE 3" DOUBLE SHREDDED BARK MULCH FOR ALL PLANTED TREES, SHRUBS AND LANDSCAPE BEDS.

PLANT SCHEDULE

SYMBOL	CODE	BOTANICAL / COMMON NAME	SIZE	CONTAINER	QTY
DECIDUOUS TREES					
	AA	Acer x freemanii 'Jeffersred' / Autumn Blaze® Freeman Maple	2.5" Cal.	B&B	3
	CW	Carpinus caroliniana 'Wisconsin Red' / Wisconsin Red Muscledwood	2.5" Cal.	B&B	6
	GA	Ginkgo biloba 'Autumn Gold' / Autumn Gold Maidenhair Tree	2.5" Cal.	B&B	2
	GD	Gymnocladus dioica 'Espresso' / Kentucky Coffeetree	2.5" Cal.	B&B	3
	TG	Tilia cordata 'Greenspire' / Greenspire Littleleaf Linden	2.5" Cal.	B&B	5
EVERGREEN TREES					
	JC	Juniperus chinensis 'Mountbatten' / Mountbatten Juniper	6' Ht.	B&B	15
	JV	Juniperus virginiana / Eastern Redcedar	6' Ht.	B&B	10
	TB	Thuja occidentalis 'Bail John' / Technit® Arborvitae	6' Ht.	B&B	5
	TN	Thuja occidentalis 'Nigra' / Black Arborvitae	6' Ht.	B&B	10
	TT	Thuja occidentalis 'Techny' / Techny Arborvitae	6' Ht.	B&B	4
ORNAMENTAL TREES					
	CC	Cercis canadensis / Eastern Redbud	8' Ht. (Multi-Stem)	B&B	2
	SR	Syringa reticulata 'Ivory Silk' / Ivory Silk Japanese Tree Lilac	2.5" Cal.	B&B	4
BROADLEAF EVERGREEN SHRUBS					
	BG	Buxus x 'Green Mountain' / Green Mountain Boxwood	3 gal.	Cont.	6
DECIDUOUS SHRUBS					
	AI	Aronia melanocarpa 'Morton' / Iroquois Beauty™ Black Chokeberry	3 gal.	Cont.	25
	DJ	Diervilla lonicera 'Jewel' / Jewel Bush Honeysuckle	3 gal.	Cont.	34
	FC	Forsythia x 'Courtasol' / Gold Tide® Forsythia	3 gal.	Cont.	5
	HA	Hydrangea arborescens 'Annabelle' / Annabelle Hydrangea	3 gal.	Cont.	5
	HB	Hydrangea macrophylla 'PIIHM-II' / BloomStruck® Hydrangea	3 gal.	Cont.	6
	RA	Rhus aromatica 'Gro-Low' / Gro-Low Fragrant Sumac	3 gal.	Cont.	28
	RL	Rosa rugosa 'Purple Pavement' / Purple Pavement Rose	3 gal.	Cont.	12
	SM	Syringa meyeri 'Palibin' / Dwarf Korean Lilac	3 gal.	Cont.	7
EVERGREEN SHRUBS					
	JP	Juniperus chinensis 'Kallays Compact' / Kallay Compact Pfitzer Juniper	3 gal.	Cont.	17
	PP	Pinus mugo 'Pumilio' / Dwarf Mugo Pine	3 gal.	Cont.	12
	TE	Taxus x media 'Everlow' / Everlow Anglo-Japanese Yew	3 gal.	Cont.	6
	TH	Taxus x media 'Hicksii' / Hicks Anglo-Japanese Yew	3 gal.	Cont.	2
ORNAMENTAL GRASSES					
	CO	Calamagrostis x acutiflora 'Overdam' / Overdam Feather Reed Grass	1 gal.	Cont.	23
	DG	Deschampsia cespitosa 'Goldtau' / Gold Dew Tufted Hair Grass	1 gal.	Cont.	26
	PN	Panicum virgatum 'Northwind' / Northwind Switch Grass	1 gal.	Cont.	14
	SS	Schizachyrium scoparium 'Standing Ovation' / Standing Ovation Little Bluestem	1 gal.	Cont.	31
	SH	Sporobolus heterolepis 'Tara' / Tara Prairie Dropseed	1 gal.	Cont.	19
PERENNIALS					
	NW	Nepeta x faassenii 'Walker's Low' / Walker's Low Catmint	1 gal.	Cont.	11
	SA	Sedum x 'Autumn Fire' / Autumn Fire Sedum	1 gal.	Cont.	13

THE SIGMA GROUP
 Single Source. Sound Solutions.
 www.thesigmagroup.com
 1300 West Canal Street
 Milwaukee, WI 53233
 Phone: 414-643-4200
 Fax: 414-643-4210



WAUWATOSA GROCERY
 7501 W. NORTH AVENUE
 WAUWATOSA, WI
 LANDSCAPE PLAN

PRELIMINARY NOT FOR CONSTRUCTION

ISSUANCE DATE
 CONDITIONAL USE SUBMITTAL 05/20/2026

NO. REVISION DATE

PROJECT NO: 25057
 DESIGN DATE: ---
 PLOT DATE: 2026.05.20
 DRAWN BY: AJR
 CHECKED BY: PJI
 APPROVED BY: ---
 SHEET NO:

L100

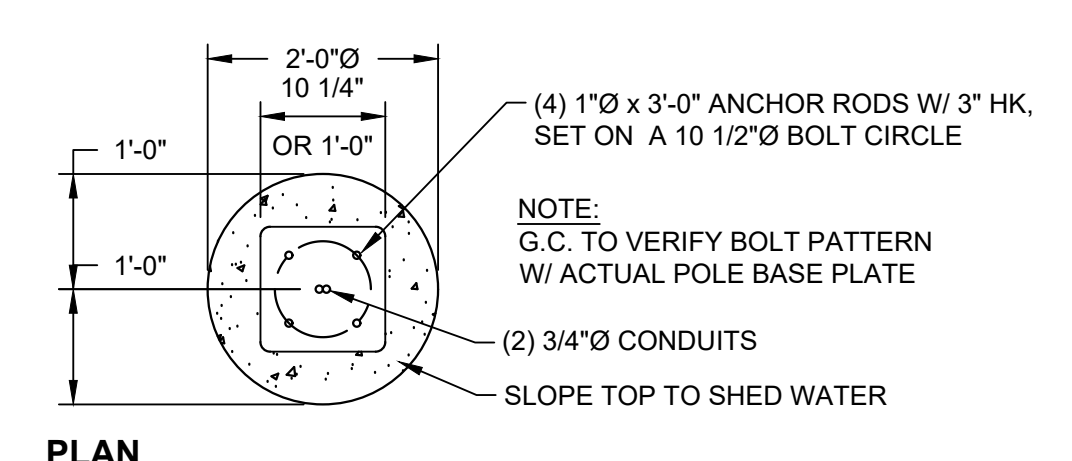
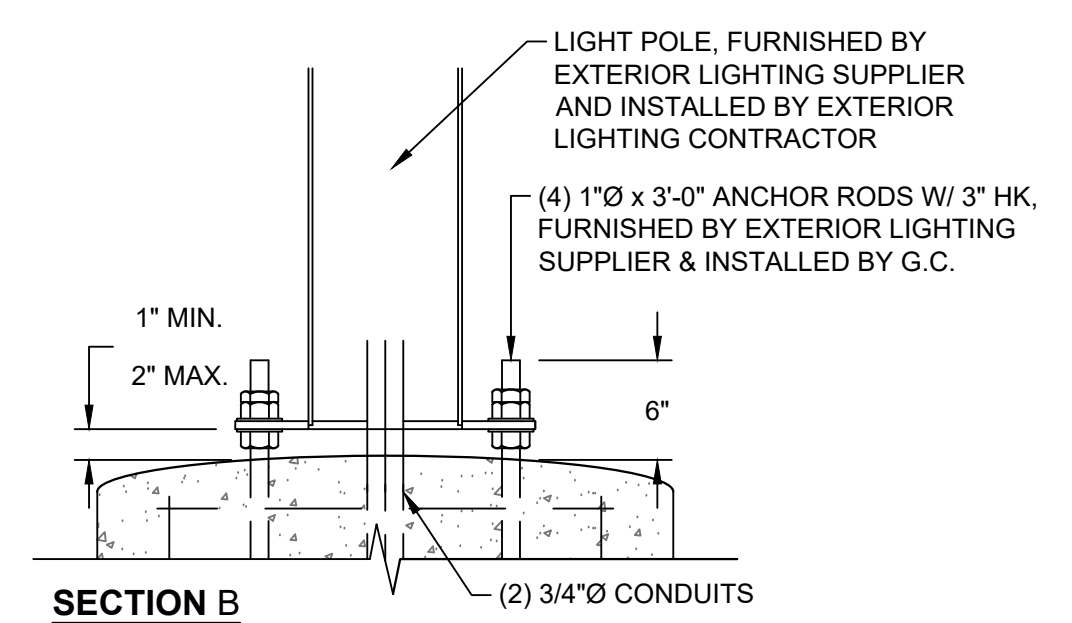
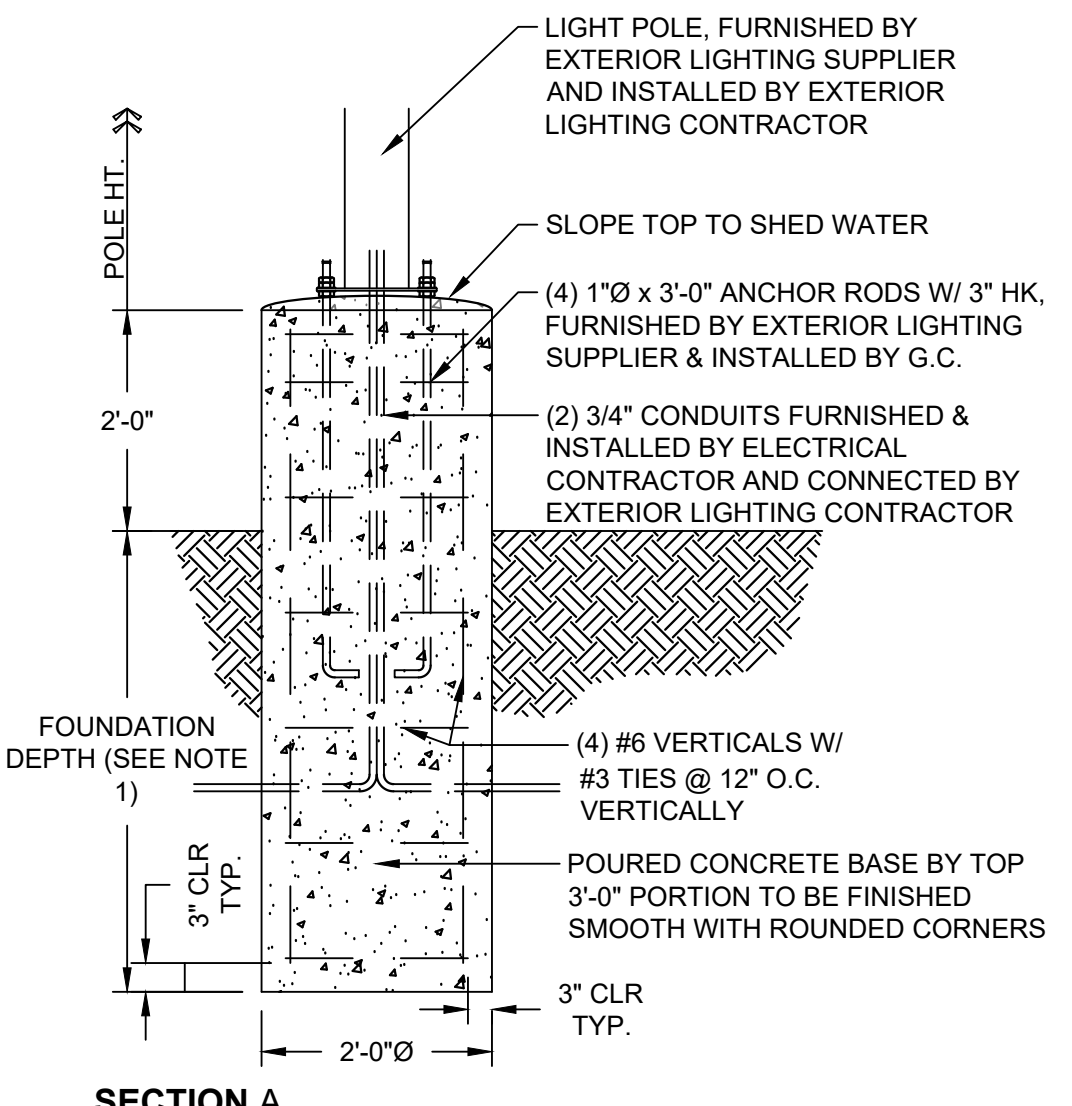
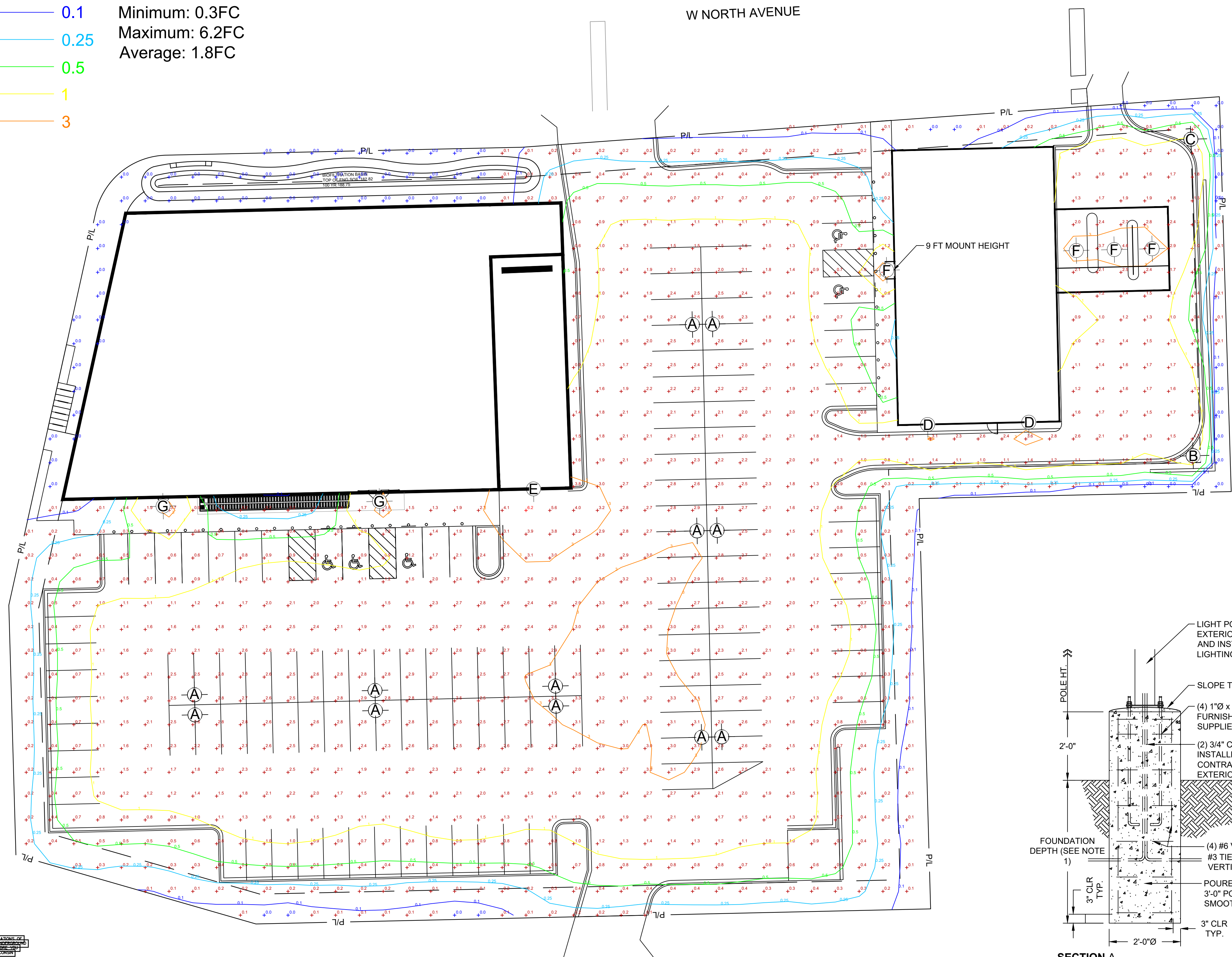


CALL DIGGERS HOTLINE
 1-800-242-8511
 TOLL FREE
 WE STATE 182.07(2)(97A)
 REQUIRES MIN. 3 WORK DAYS
 NOTICE BEFORE YOU EXCAVATE
 MILW. AREA 259-1181

THE UNDERGROUND UTILITY INFORMATION SHOWN ON THIS MAP IS BASED ON FIELD MARKINGS AND INFORMATION FURNISHED BY UTILITY COMPANIES AND THE LOCAL MUNICIPALITY. WHILE THIS INFORMATION IS BELIEVED TO BE RELIABLE, ITS ACCURACY AND COMPLETENESS CANNOT BE GUARANTEED.

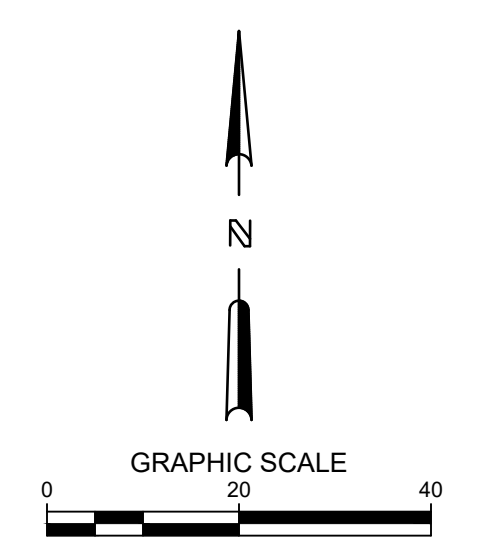
Label	Quantity	Catalog Number	Description	Lamp	Mount Height	Lamp Lumens	Watts
A	12	DSX0 LED P2 40K 70CRI T5LG	D-Series Size 0 Area Luminaire P2 Performance Package Type 5 Low GRating	4000K CCT 70 CRI	23FT Pole, 2FT Base	6472.1	45.1
B	1	DSX0 LED P2 40K 70CRI L000	D-Series Size 0 Area Luminaire P2 Performance Package Left Corner Cutoff Extreme Backlight Control	4000K CCT 70 CRI	23FT Pole, 2FT Base	4535.9	45.1
C	1	DSX0 LED P2 40K 70CRI R000	D-Series Size 0 Area Luminaire P2 Performance Package Right Corner Cutoff Extreme Backlight Control	4000K CCT 70 CRI	23FT Pole, 2FT Base	4535.9	45.1
D	2	WDGE2 LED P1 40K 70CRI T2M	WDGE2 LED WITH P1 - PERFORMANCE PACKAGE TYPE2 MEDIUM OPTIC	4000K CCT 70 CRI	8FT	1426.9	11.2
E	1	WDGE3 LED P1 40K 70CRI R4	WDGE3 LED WITH P1 - PERFORMANCE PACKAGE TYPE4 OPTIC	4000K CCT 70 CRI	16FT	7752.9	51.2
F	4	WF4 SMM5 90CRI 4000K	WF 4 SMM5 4in Flat Wafer	4000K 5CCT 90CRI	11FT	693.6	8.9
G	2	WF6 SMM5 90CRI 4000K	WF 6 SMM5 6in Flat Wafer	4000K 5CCT 90CRI	11FT	986.5	13.1

- 0.1 Minimum: 0.3FC
- 0.25 Maximum: 6.2FC
- 0.5 Average: 1.8FC
- 1
- 3



- NOTES:
- FOUNDATION DEPTH AS REQUIRED BY CODE OR TO ACHIEVE ADEQUATE SOIL BEARING CAPACITY AS DETERMINED IN A SOILS REPORT BY A LICENSED GEOTECHNICAL ENGINEER, 5'-0" DEPTH MINIMUM. IF THE EXISTING EARTH IS NON-VIRGIN FILL MATERIAL OR OTHERWISE UNSUITABLE CONSULT A LICENSED GEOTECHNICAL ENGINEER.
 - PROVIDE CONCRETE MIXTURE IN ACCORDANCE WITH ACI301.
 - fc = 3000psi
 - AIR ENTRAINMENT = 6% +/- 1%
 - WATER TO CEMENT RATIO = 0.45 MAX.
 - ANCHOR RODS SHALL BE SET IN ACCORDANCE WITH THE AISC "CODE OF STANDARD PRACTICE."
 - COMPLY WITH THE FOLLOWING ACI GUIDES:
 - ACI304 FOR CONCRETE PLACEMENT
 - ACI306.1 FOR COLD WEATHER PLACEMENT
 - ACI301 FOR HOT WEATHER PLACEMENT
 - ACI308.1 FOR CONCRETE CURING
 - COMPLY WITH CRSI'S "MANUAL OF STANDARD PRACTICE" AND ACI318 FOR PLACING REINFORCEMENT.

THE SIGMA GROUP
 Single Source. Sound Solutions.
 www.thesigmagroup.com
 1300 West Canal Street
 Milwaukee, WI 53233
 Phone: 414-643-4200
 Fax: 414-643-4210



WAUWATOSA GROCERY
7501 W. NORTH AVENUE
WAUWATOSA, WI

LIGHTING PLAN

PRELIMINARY
NOT FOR
CONSTRUCTION

ISSUANCE DATE
 CONDITIONAL USE SUBMITTAL 05/20/2026

NO. REVISION DATE

PROJECT NO: 25057
 DESIGN DATE: ---
 PLOT DATE: 2026.05.20
 DRAWN BY: JMJ
 CHECKED BY: PJI
 APPROVED BY: ---

SHEET NO:
LT-100

CALL DIGGERS HOTLINE
 1-800-242-8511
 TOLL FREE

MILWAUKEE AREA 259-1181

THE UNDERGROUND UTILITY INFORMATION SHOWN ON THIS MAP IS BASED ON FIELD MARKINGS AND INFORMATION FURNISHED BY UTILITY COMPANIES AND THE LOCAL MUNICIPALITY. WHILE THIS INFORMATION IS BELIEVED TO BE RELIABLE, ITS ACCURACY AND COMPLETENESS CANNOT BE GUARANTEED.

