

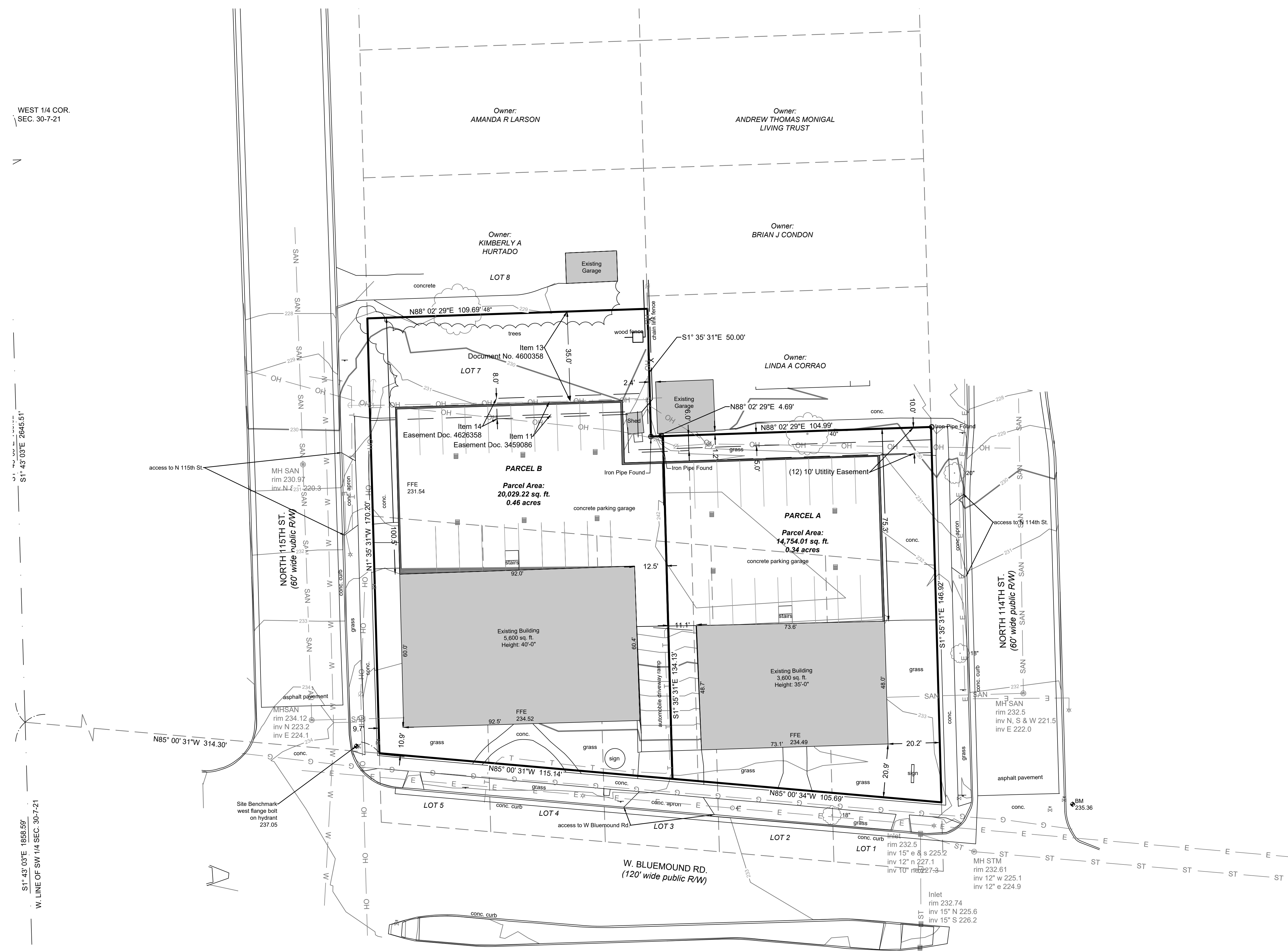
**114TH AND BLUEMOUND
 11430 - 11400 BLUEMOUND ROAD
 WAUWATOSA, WISCONSIN
 SITE SURVEY**

**PRELIMINARY
 NOT FOR
 CONSTRUCTION**

SCALE:	1"=20'
PROJECT NO:	21393
DESIGN DATE:	----
PLOT DATE:	1/31/2023
DRAWN BY:	----
CHECKED BY:	----
APPROVED BY:	----
SHEET NO:	C001

- LEGEND:**
- SECTION 1/4 SECTION LINE
 - PROPERTY LINE
 - EASEMENT
 - X --- CHAIN LINK FENCE
 - TREE LINE
 - OH --- OVERHEAD UTILITY LINE
 - E --- ELECTRIC
 - TEL --- TELEPHONE
 - FO --- FIBER OPTIC
 - CTV --- CABLE TV
 - SAN --- SANITARY SEWER
 - FM --- FORCE MAIN
 - ST --- STORM SEWER
 - W --- WATER MAIN
 - G --- GAS
 - 670 --- EXISTING CONTOUR
 - WET --- WETLAND
 - FP --- FLOODPLAIN
-
- MANHOLE
 - CATCH BASIN
 - CATCH BASIN (ROUND)
 - ROOF DRAIN
 - HYDRANT
 - WATER VALVE
 - GAS VALVE
 - UTILITY POLE
 - GUY WIRE
 - GAS METER
 - ELECTRIC METER
 - UTILITY PEDESTAL
 - TRAFFIC SIGNAL
 - LIGHT POLE
 - SOIL BORING
 - MONITORING WELL
 - IRON PIPE FOUND/SET
 - REBAR FOUND/SET
 - CHISELED CROSS FOUND/SET
 - PK NAIL FOUND/SET
 - SPIKE/NAIL
 - MONUMENT
 - BENCHMARK
 - SIGN
 - DECIDUOUS TREE
 - CONIFEROUS TREE
 - BUSH
 - POST

- GENERAL NOTES:**
1. THE UNDERGROUND UTILITY INFORMATION SHOWN ON THIS DRAWING IS BASED ON FIELD LOCATIONS AND/OR RECORDS FURNISHED BY MUNICIPALITIES AND UTILITY COMPANIES. THE LOCATION AND ACCURACY OF WHICH CANNOT BE GUARANTEED. THERE MAY BE ADDITIONAL UNDERGROUND UTILITY INSTALLATIONS WITHIN THE PROJECT AREA THAT ARE NOT SHOWN.
 2. VERIFY ACTUAL LOCATIONS AND INVERTS IN THE FIELD. ANY POTENTIAL ERRORS, OMISSIONS, OR DISCREPANCIES SHALL BE BROUGHT TO THE ATTENTION OF THE ENGINEER PRIOR TO PROCEEDING WITH CONSTRUCTION.
 3. DRAWING IS BASED ON FIELD SURVEY COMPLETED BY THE SIGMA GROUP ON OCTOBER 5TH, 2022.
 4. DATUM FOR THE PROJECT SURVEY IS CITY OF WAUWATOSA. BENCHMARK FOR THE PROJECT SURVEY IS WEST FLANGE BOLT OF HYDRANT AT THE NORTHEAST CORNER OF BLUEMOUND AND 115TH ST. WITH AN ELEVATION OF 237.05.
 5. CONTRACTOR TO VERIFY EXISTING CONDITIONS. CONTACT ENGINEER WITH DISCREPANCIES.



WEST 14 COR.
 SEC. 30-7-21

S1° 43' 03" E 2645.51'

NORTH 115TH ST.
 (60' wide public R/W)

NORTH 114TH ST.
 (60' wide public R/W)

W. BLUEMOUND RD.
 (120' wide public R/W)

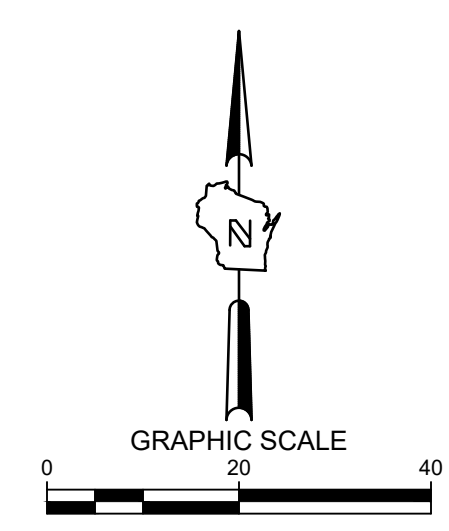
S1° 43' 03" E 1858.59'
 W. LINE OF SW 1/4 SEC. 30-7-21

SOUTH 1/4 COR.
 SEC. 30-7-21

CALL DIGGERS HOTLINE
 1-800-242-8511
 TOLL FREE

TO OBTAIN OPERATIONS OF
 ANY UNDERGROUND UTILITIES
 (GAS, WATER, ETC.) BEFORE YOU
 EXCAVATE, CONTACT THE
 CITY ENGINEER.

THE UNDERGROUND UTILITY INFORMATION SHOWN ON THIS MAP IS BASED ON FIELD MARKINGS AND INFORMATION FURNISHED BY UTILITY COMPANIES AND THE LOCAL MUNICIPALITY. WHILE THIS INFORMATION IS BELIEVED TO BE RELIABLE, ITS ACCURACY AND COMPLETENESS CANNOT BE GUARANTEED.



**114TH AND BLUEMOUND
 11430 - 11400 BLUEMOUND ROAD
 WAUWATOSA, WISCONSIN**

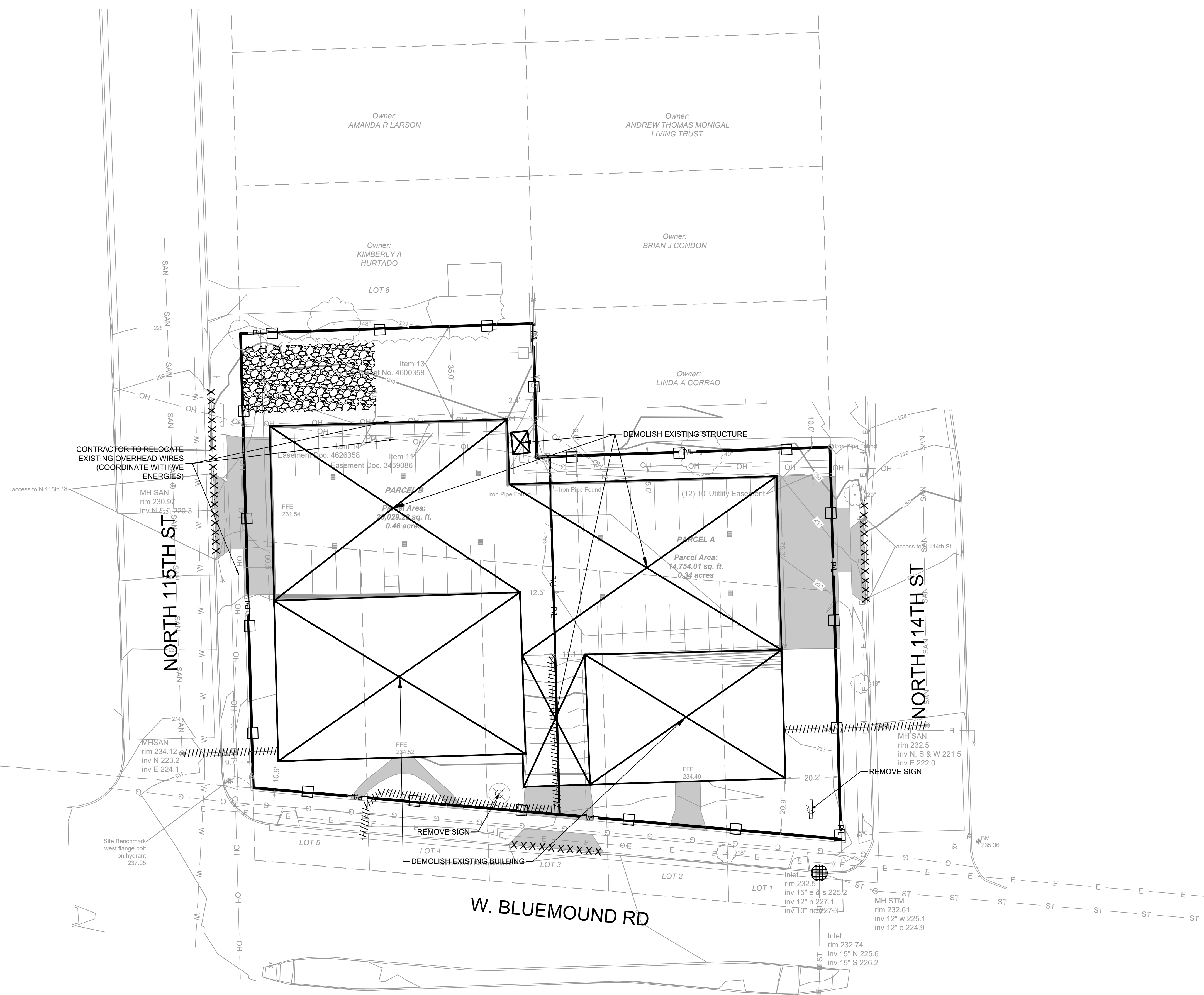
EROSION CONTROL PLAN

PRELIMINARY
 NOT FOR
 CONSTRUCTION

SCALE:	1"=20'
PROJECT NO:	21393
DESIGN DATE:	----
PLOT DATE:	2023.01.31
DRAWN BY:	----
CHECKED BY:	----
APPROVED BY:	----
SHEET NO:	C002

- LEGEND:**
- PROPOSED SILT SOCKET (B C400)
 - PROPOSED INLET PROTECTION (C C400)
 - PROPOSED TRACKING PAD (A C400)
 - PROPOSED EROSION MATTING WISDOT APPROVED CLASS 1 TYPE B (D C400)
 - EXISTING CONTOUR (5)
 - PROPOSED CONTOUR (5)
 - UTILITY REMOVAL
 - CURB REMOVAL
 - STRUCTURE REMOVAL
 - PAVEMENT REMOVAL

- GENERAL NOTES:**
- THE UNDERGROUND UTILITY INFORMATION SHOWN ON THIS DRAWING IS BASED ON FIELD LOCATIONS AND/OR RECORDS FURNISHED BY MUNICIPALITIES AND UTILITY COMPANIES. THE LOCATION AND ACCURACY OF WHICH CANNOT BE GUARANTEED. THERE MAY BE ADDITIONAL UNDERGROUND UTILITY INSTALLATIONS WITHIN THE PROJECT AREA THAT ARE NOT SHOWN.
 - VERIFY ACTUAL LOCATIONS AND INVERTS IN THE FIELD. ANY POTENTIAL ERRORS, OMISSIONS, OR DISCREPANCIES SHALL BE BROUGHT TO THE ATTENTION OF THE ENGINEER PRIOR TO PROCEEDING WITH CONSTRUCTION.
 - WORK TO BE COMPLETED IS INDICATED IN BOLD TYPE LINES AND EXISTING CONDITIONS ARE INDICATED BY LIGHT TYPE LINES.
 - ELECTRONIC CIVIL FILES ARE AVAILABLE UPON WRITTEN REQUEST. DO NOT USE ELECTRONIC CIVIL FILES TO LAYOUT FOUNDATIONS, COLUMN LINES, LIGHT POLES, OR OTHER NON CIVIL SITE WORK. REFER TO ARCHITECTURAL DRAWINGS FOR DIMENSIONS OF BUILDING AND ARCHITECTURAL FEATURES.
 - SEE SHEET C401 FOR A COMPLETE LIST OF EROSION CONTROL NOTES AND DETAILS. EROSION CONTROL MEASURES SHALL BE INSTALLED PRIOR TO START OF LAND DISTURBING ACTIVITIES.
 - DO NOT BEGIN LAND DISTURBING ACTIVITIES UNTIL AN EROSION CONTROL PERMIT IS OBTAINED FROM LOCAL JURISDICTION.



WEST 1/4 COR.
 SEC. 30-7-21

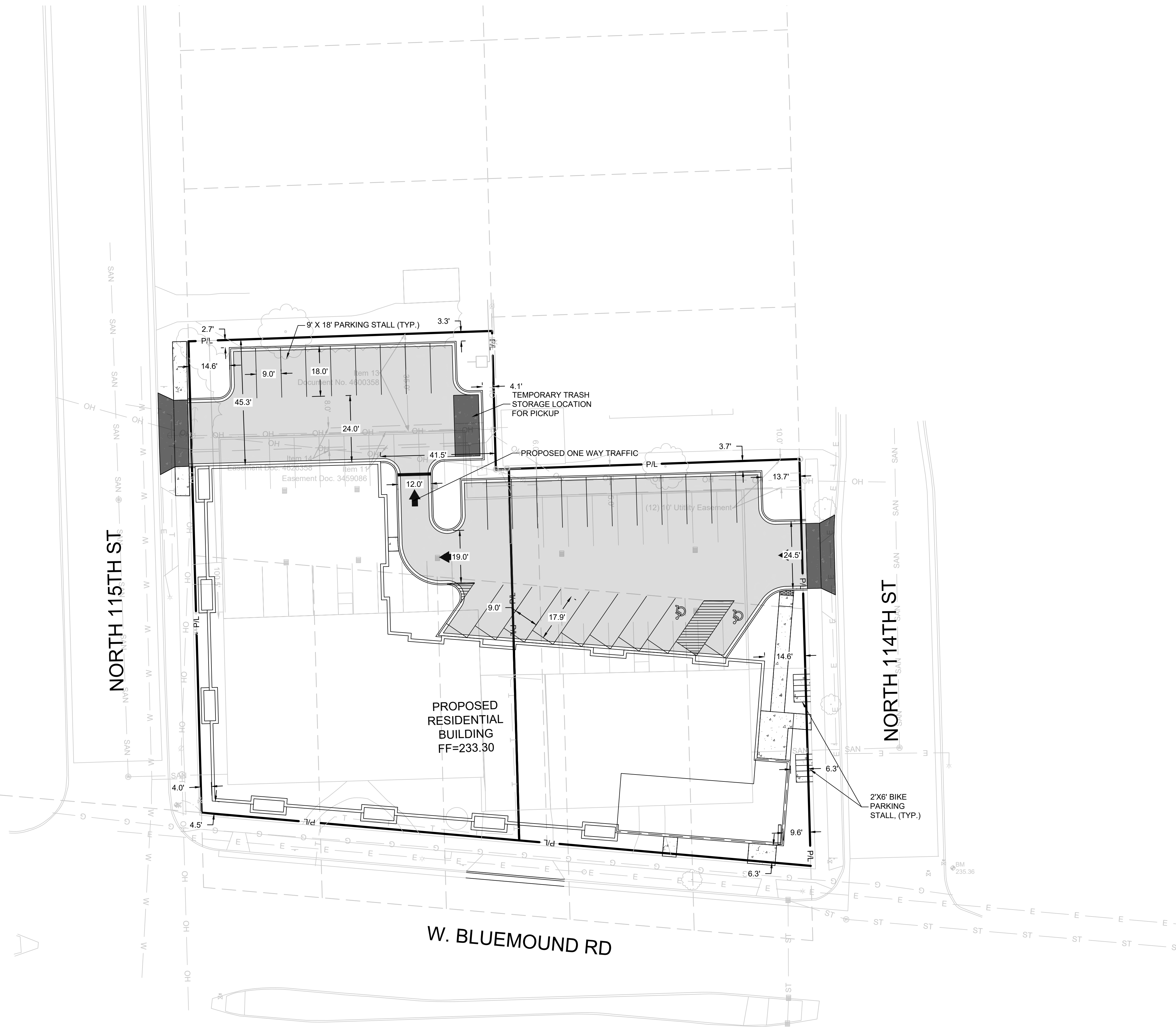
W. LINE OF SW 1/4 SEC. 30-7-21

TO OBTAIN LOCATIONS OF
 PARTICIPATING UNDERGROUND
 UTILITIES BEFORE YOU
 DIG IN WISCONSIN

CALL DIGGERS HOTLINE
 1-800-242-8511
 TOLL FREE

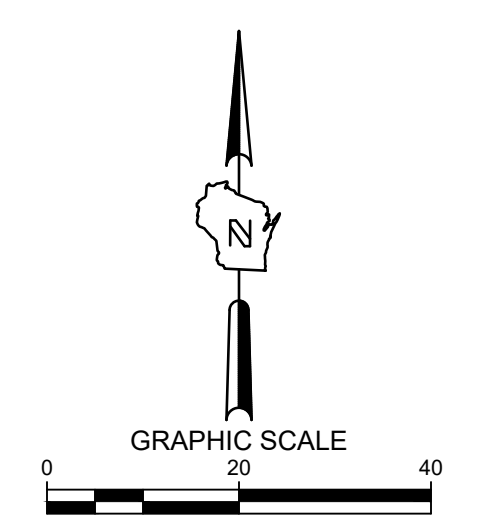
WIS STATUTE 182.07(2)(b)
 REQUIRES YOU TO WORK DATE
 NOTICE BEFORE YOU EXCAVATE
 MILW. AREA 259-1181

THE UNDERGROUND UTILITY INFORMATION SHOWN ON THIS MAP IS BASED ON FIELD MARKINGS AND INFORMATION FURNISHED BY UTILITY COMPANIES AND THE LOCAL MUNICIPALITY. WHILE THIS INFORMATION IS BELIEVED TO BE RELIABLE, ITS ACCURACY AND COMPLETENESS CANNOT BE GUARANTEED.



SITE INFORMATION			
SITE AREA	34783	0.799 AC	
SITE DISTURBED AREA	34783	0.799 AC	
EXISTING IMPERVIOUS AREA	26310	0.604 AC	75.6 %
PROPOSED IMPERVIOUS AREA	30065	0.690 AC	86.4 %
TOTAL OUTDOOR PARKING SPACES	28		
OUTDOOR ADA PARKING SPACES	2		
TOTAL UNDERGROUND PARKING SPACES	39		
UNDERGROUND ADA PARKING SPACES	2		
TOTAL PARKING PROVIDED	71		

THE SIGMA GROUP
 Single Source. Sound Solutions.
 www.thesigmagroup.com
 1300 West Canal Street
 Milwaukee, WI 53233
 Phone: 414-643-4200
 Fax: 414-643-4210



114TH AND BLUEMOUND
 11430 - 11400 BLUEMOUND ROAD
 WAUWATOSA, WISCONSIN

SITE PLAN

- LEGEND:**
- (B C401) 5' THICK CONCRETE WALK
 - (C C401) HEAVY DUTY CONCRETE PAVEMENT
 - (D C401) ASPHALT SURFACE
 - (A C401) CURB & GUTTER (ACCEPT)
 - (A C401) CURB & GUTTER (REJECT)

- GENERAL NOTES:**
- THE UNDERGROUND UTILITY INFORMATION SHOWN ON THIS DRAWING IS BASED ON FIELD LOCATIONS AND/OR RECORDS FURNISHED BY MUNICIPALITIES AND UTILITY COMPANIES. THE LOCATION AND ACCURACY OF WHICH CANNOT BE GUARANTEED. THERE MAY BE ADDITIONAL UNDERGROUND UTILITY INSTALLATIONS WITHIN THE PROJECT AREA THAT ARE NOT SHOWN.
 - VERIFY ACTUAL LOCATIONS AND INVERTS IN THE FIELD. ANY POTENTIAL ERRORS, OMISSIONS, OR DISCREPANCIES SHALL BE BROUGHT TO THE ATTENTION OF THE ENGINEER PRIOR TO PROCEEDING WITH CONSTRUCTION.
 - WORK TO BE COMPLETED IS INDICATED IN BOLD TYPE LINES AND EXISTING CONDITIONS ARE INDICATED BY LIGHT TYPE LINES.
 - ELECTRONIC CIVIL FILES ARE AVAILABLE UPON WRITTEN REQUEST. DO NOT USE ELECTRONIC CIVIL FILES TO LAYOUT FOUNDATIONS, COLUMN LINES, LIGHT POLES, OR OTHER NON CIVIL SITE WORK. REFER TO ARCHITECTURAL DRAWINGS FOR DIMENSIONS OF BUILDING AND ARCHITECTURAL FEATURES.
 - DIMENSIONS ARE FROM FACE OF CURB OR EDGE OF PAVEMENT.
 - WORK WITHIN THE PUBLIC RIGHT OF WAY, INCLUDING BUT NOT LIMITED TO DRIVEWAY OPENINGS, SIDEWALK AND RAMPS, PAVING, AND CURB AND GUTTER SHALL BE COMPLETED PER MUNICIPAL AND/OR COUNTY REQUIREMENTS AND STANDARDS.
 - EARTHWORK SHALL BE IN ACCORDANCE WITH GEOTECHNICAL ENGINEER'S RECOMMENDATIONS.

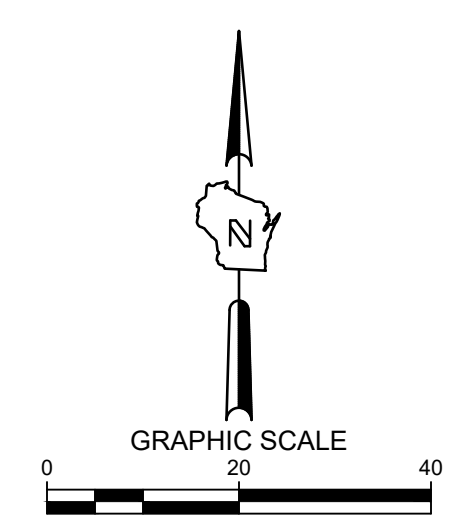
**PRELIMINARY
 NOT FOR
 CONSTRUCTION**

SCALE:	1"=20'
PROJECT NO:	21393
DESIGN DATE:	----
PLOT DATE:	1/31/2023
DRAWN BY:	----
CHECKED BY:	----
APPROVED BY:	----
SHEET NO:	C100



CALL DIGGERS HOTLINE
 1-800-242-8511
 TOLL FREE

THE UNDERGROUND UTILITY INFORMATION SHOWN ON THIS MAP IS BASED ON FIELD MARKINGS AND INFORMATION FURNISHED BY UTILITY COMPANIES AND THE LOCAL MUNICIPALITY. WHILE THIS INFORMATION IS BELIEVED TO BE RELIABLE, ITS ACCURACY AND COMPLETENESS CANNOT BE GUARANTEED.

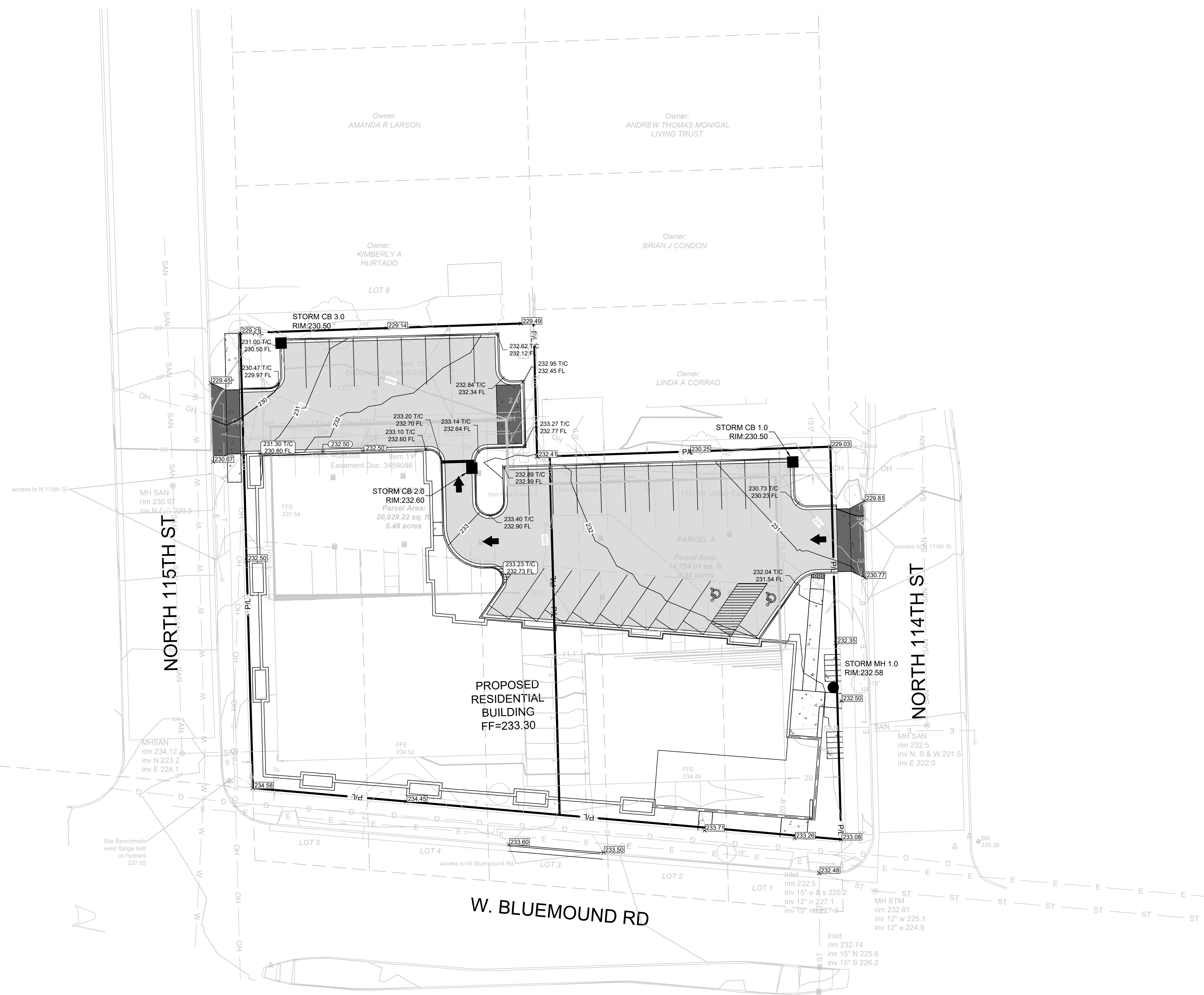


**114TH AND BLUEMOUND
 11430 - 11400 BLUEMOUND ROAD
 WAUWATOSA, WISCONSIN**

GRADING PLAN

**PRELIMINARY
 NOT FOR
 CONSTRUCTION**

WEST 1/4 COR.
 SEC. 30-7-21



- LEGEND:**
- 5' THICK CONCRETE WALK
 - HEAVY DUTY CONCRETE PAVEMENT
 - ASPHALT SURFACE
 - CURB & GUTTER (ACCEPT)
 - CURB & GUTTER (REJECT)
 - EXISTING CONTOUR
 - PROPOSED CONTOUR
 - PROPOSED CURB & GUTTER SPOT GRADE
 T/C: TOP OF CURB GRADE
 FL: FLOW LINE CURB GRADE
 - PROPOSED ASPHALT SPOT GRADE
 - EXISTING SURFACE SPOT GRADE (MATCH)

- GENERAL NOTES:**
- THE UNDERGROUND UTILITY INFORMATION SHOWN ON THIS DRAWING IS BASED ON FIELD LOCATIONS AND/OR RECORDS FURNISHED BY MUNICIPALITIES AND UTILITY COMPANIES. THE LOCATION AND ACCURACY OF WHICH CANNOT BE GUARANTEED. THERE MAY BE ADDITIONAL UNDERGROUND UTILITY INSTALLATIONS WITHIN THE PROJECT AREA THAT ARE NOT SHOWN.
 - VERIFY ACTUAL LOCATIONS AND INVERTS IN THE FIELD. ANY POTENTIAL ERRORS, OMISSIONS, OR DISCREPANCIES SHALL BE BROUGHT TO THE ATTENTION OF THE ENGINEER PRIOR TO PROCEEDING WITH CONSTRUCTION.
 - WORK TO BE COMPLETED IS INDICATED IN BOLD TYPE LINES AND EXISTING CONDITIONS ARE INDICATED BY LIGHT TYPE LINES.
 - ELECTRONIC CIVIL FILES ARE AVAILABLE UPON WRITTEN REQUEST. DO NOT USE ELECTRONIC CIVIL FILES TO LAYOUT FOUNDATIONS, COLUMN LINES, LIGHT POLES, OR OTHER NON-CIVIL SITE WORK. REFER TO ARCHITECTURAL DRAWINGS FOR DIMENSIONS OF BUILDING AND ARCHITECTURAL FEATURES.
 - DIMENSIONS ARE FROM FACE OF CURB OR EDGE OF PAVEMENT.
 - WORK WITHIN THE PUBLIC RIGHT OF WAY, INCLUDING BUT NOT LIMITED TO DRIVEWAY OPENINGS, SIDEWALK AND RAMPS, PAVING, AND CURB AND GUTTER SHALL BE COMPLETED PER MUNICIPAL AND/OR COUNTY REQUIREMENTS AND STANDARDS.
 - EARTHWORK SHALL BE IN ACCORDANCE WITH GEOTECHNICAL ENGINEER'S RECOMMENDATIONS.

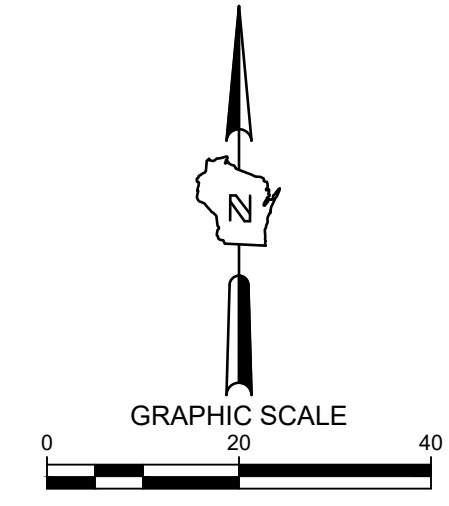
SCALE:	1"=20'
PROJECT NO:	21393
DESIGN DATE:	----
PLOT DATE:	1/31/2023
DRAWN BY:	----
CHECKED BY:	----
APPROVED BY:	----
SHEET NO:	C200

TO OBTAIN LOCATIONS OF
 PARCELS UNDERGROUND
 UTILITIES BEFORE YOU
 DIG IN WISCONSIN

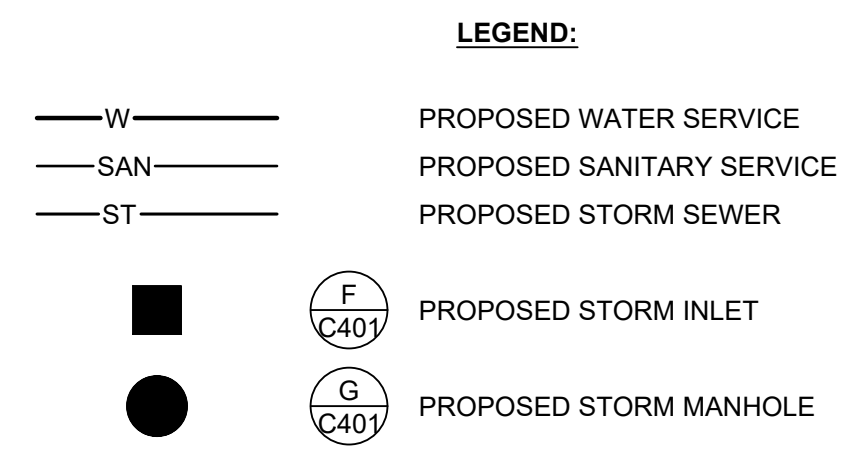
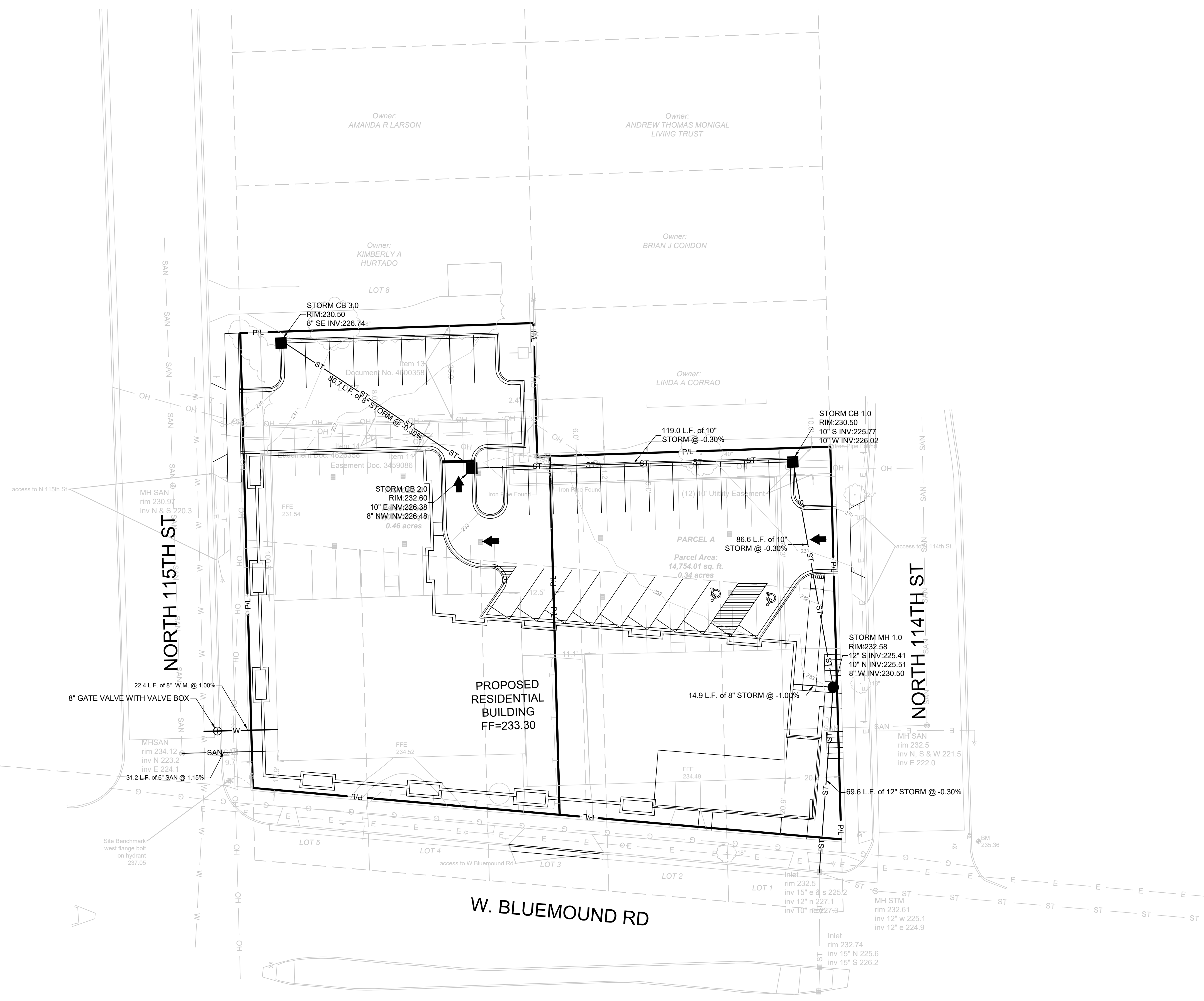
CALL DIGGERS HOTLINE
 1-800-242-8511
 TOLL FREE

MS STATUTE 182.07(2)(b)
 REQUIRES YOU TO MARK DATE
 NOTICE BEFORE YOU EXCAVATE
 MILW. AREA 259-1181

THE UNDERGROUND UTILITY INFORMATION SHOWN ON THIS MAP IS BASED ON FIELD MARKINGS AND INFORMATION FURNISHED BY UTILITY COMPANIES AND THE LOCAL MUNICIPALITY. WHILE THIS INFORMATION IS BELIEVED TO BE RELIABLE, ITS ACCURACY AND COMPLETENESS CANNOT BE GUARANTEED.



WEST 1/4 COR.
 SEC. 30-7-21



GENERAL NOTES:

1. THE UNDERGROUND UTILITY INFORMATION SHOWN ON THIS DRAWING IS BASED ON FIELD LOCATIONS AND/OR RECORDS FURNISHED BY MUNICIPALITIES AND UTILITY COMPANIES. THE LOCATION AND ACCURACY OF WHICH CANNOT BE GUARANTEED. THERE MAY BE ADDITIONAL UNDERGROUND UTILITY INSTALLATIONS WITHIN THE PROJECT AREA THAT ARE NOT SHOWN.
2. VERIFY ACTUAL LOCATIONS AND INVERTS IN THE FIELD. ANY POTENTIAL ERRORS, OMISSIONS, OR DISCREPANCIES SHALL BE BROUGHT TO THE ATTENTION OF THE ENGINEER PRIOR TO PROCEEDING WITH CONSTRUCTION.
3. WORK TO BE COMPLETED IS INDICATED IN BOLD TYPE LINES AND EXISTING CONDITIONS ARE INDICATED BY LIGHT TYPE LINES.
4. ELECTRONIC CIVIL FILES ARE AVAILABLE UPON WRITTEN REQUEST. DO NOT USE ELECTRONIC CIVIL FILES TO LAYOUT FOUNDATIONS, COLUMN LINES, LIGHT POLES, OR OTHER NON CIVIL SITE WORK. REFER TO ARCHITECTURAL DRAWINGS FOR DIMENSIONS OF BUILDING AND ARCHITECTURAL FEATURES.
5. ALL UTILITIES WITHIN 5 FEET OF PAVED AREAS SHALL REQUIRE GRANULAR BACKFILL. SLURRY BACKFILL IS REQUIRED FOR ALL WORK IN PUBLIC RIGHT OF WAY.
6. PRIVATE STORM INLETS IN PAVEMENT SHALL REQUIRE DRAIN TILE STUBS OF 10 FEET IN TWO DIRECTIONS FOR SUBDRAINAGE. RIM GRADE FOR STORM INLETS IN CURB AND GUTTER ARE FLOW LINE GRADES.
7. WORK IN PUBLIC RIGHT OF WAY SHALL FOLLOW MATERIAL AND INSTALLATION REQUIREMENTS PER MUNICIPAL AND/OR COUNTY.
8. PRIVATE STORM SEWER 12-INCH DIAMETER OR LARGER SHALL BE HDPE. BELOW 12-INCH DIAMETER SHALL BE PVC SDR-35 ASTM D3034. PRIVATE WATER MAIN SHALL BE CLASS 235 DR 18 PVC CONFORMING TO AWWA C-900. PRIVATE SANITARY SEWER SHALL BE PVC SDR-35 ASTM D3034.
9. COORDINATE FINAL LOCATION AND DESIGN OF PRIVATE UTILITY SERVICES (ELECTRIC, GAS, PHONE, CABLE) WITH UTILITY COMPANIES.
10. IF PROJECT IS DESIGN BUILD MEP, THE GENERAL CONTRACTOR IS REQUIRED TO PROVIDE FINAL SEWER AND WATER DESIGN SHOWING LOCATION, INVERTS AND SIZES TO THE ENGINEER FOR FINAL REVIEW AND VERIFICATION PRIOR TO STARTING UNDERGROUND UTILITY CONSTRUCTION.
11. WATER MAIN CONNECTION: TAP WATER MAIN WITH SIZE AND LOCATION INDICATED ON PLAN IN ACCORDANCE WITH LOCAL WATER UTILITY REQUIREMENTS. COORDINATE CONNECTION WITH LOCAL WATER UTILITY. ALL JOINTS SHALL BE RESTRAINED FROM CONNECTION OF WATER MAIN TO BUILDING WALL. SUBMIT JOINT RESTRAINT DETAILS FOR ALL JOINT TYPES INCLUDING PUSH-ON AND MECHANICAL CONNECTIONS. INSTALL MEGA-LUG OR APPROVED EQUAL TIGHT TO WALL FOR RESTRAINT FOR ALL BUILDING WALL PENETRATIONS AS APPROVED BY LOCAL PLUMBING INSPECTOR AND WATER UTILITY. INSTALL THRUST BLOCKING AND MEGA-LUG AT BEND BELOW FLOOR FOR ALL FLOOR PENETRATIONS.
12. INSTALL JOINT RESTRAINT AND CONCRETE THRUST BLOCKS AT ALL OFFSET FITTINGS (TEES, BENDS, DEAD ENDS, VALVES, REDUCERS) USING MEGA-LUG OR APPROVED EQUAL. CONCRETE THRUST BLOCKS SHALL BE INSTALLED PER FILE NO'S: 44.45.46 FROM THE STANDARD SPECIFICATIONS FOR SEWER AND WATER CONSTRUCTION IN WISCONSIN. SEE DETAIL FOR MINIMUM LENGTH OF RESTRAINED JOINT REQUIRED. SUBMIT JOINT RESTRAINT DETAILS FOR ALL JOINT TYPES INCLUDING PUSH-ON AND MECHANICAL CONNECTIONS.

114TH AND BLUEMOUND
11430 - 11400 BLUEMOUND ROAD
WAUWATOSA, WISCONSIN
UTILITY PLAN

PRELIMINARY
NOT FOR
CONSTRUCTION

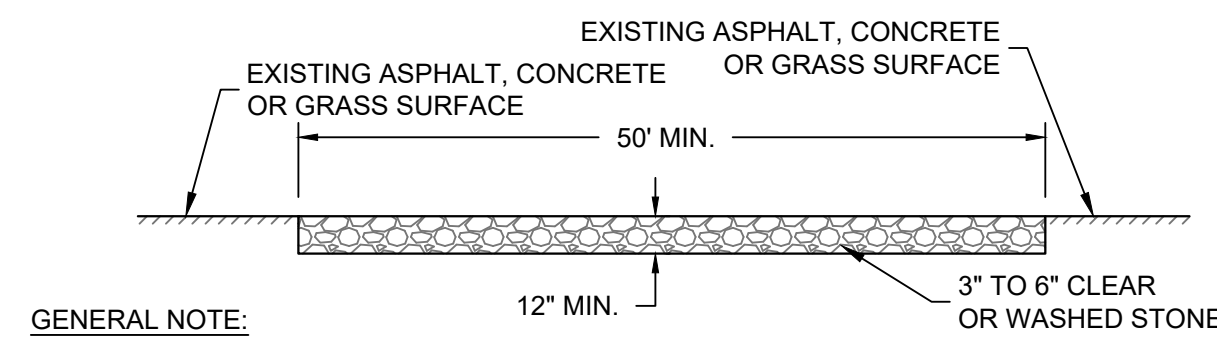
SCALE:	1"=20'
PROJECT NO:	21393
DESIGN DATE:	---
PLOT DATE:	1/31/2023
DRAWN BY:	---
CHECKED BY:	---
APPROVED BY:	---
SHEET NO:	C300

TO OBTAIN LOCATIONS OF
 PUBLIC UTILITIES AND RECORDS
 FACILITIES BEFORE YOU
 EXCAVATE

CALL DIGGERS HOTLINE
 1-800-242-8511
 TOLL FREE

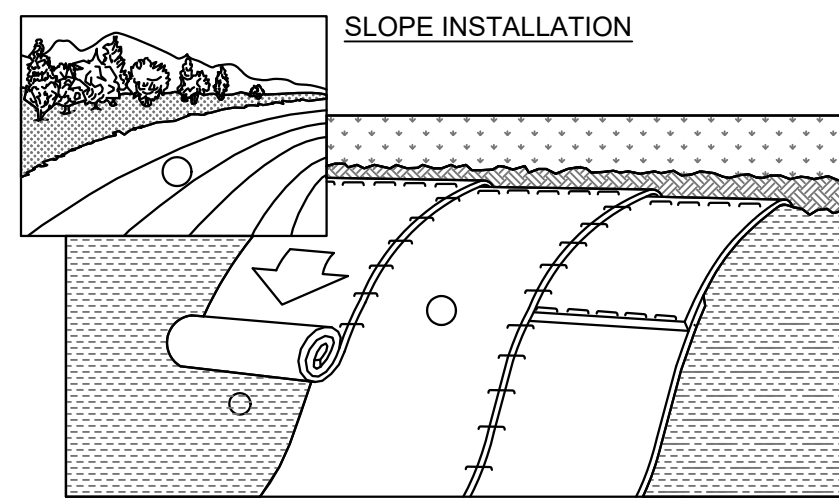
WE STATUTE 182.07(2)(b)
 REQUIRES YOU TO MARK DATE
 NOTICE BEFORE YOU EXCAVATE
 MILW. AREA 259-1181

THE UNDERGROUND UTILITY INFORMATION SHOWN ON THIS MAP IS BASED ON FIELD MARKINGS AND INFORMATION FURNISHED BY UTILITY COMPANIES AND THE LOCAL MUNICIPALITY. WHILE THIS INFORMATION IS BELIEVED TO BE RELIABLE, ITS ACCURACY AND COMPLETENESS CANNOT BE GUARANTEED.



- GENERAL NOTE:**
- STONE TRACKING PAD SHALL CONFORM TO WDNR CONSERVATION PRACTICE STANDARD #1057
 - AN APPROVED MANUFACTURED TRACKOUT CONTROL DEVICE SYSTEM CONFORMING TO WDNR TECHNICAL STANDARD #1057 MAY BE USED AS AN ALTERNATIVE TO A STONE TRACKING PAD

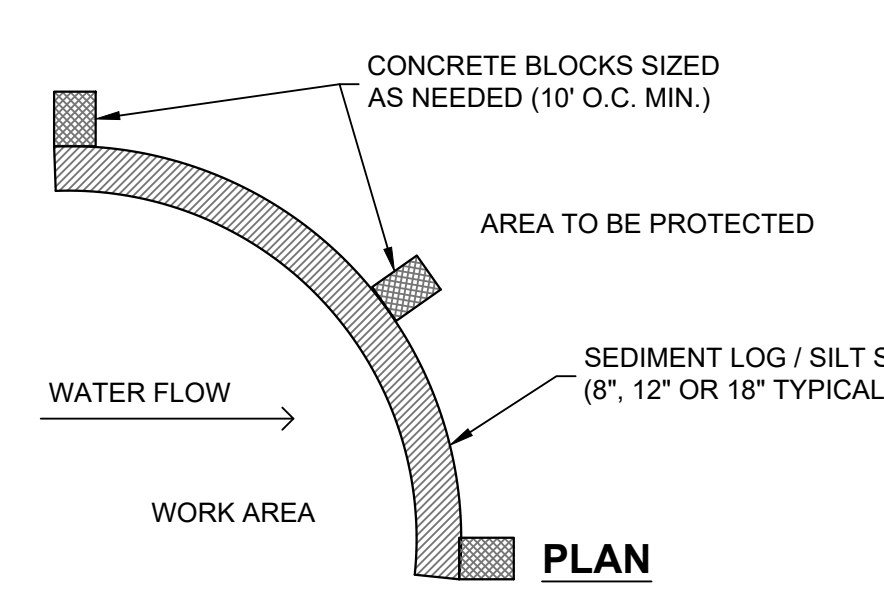
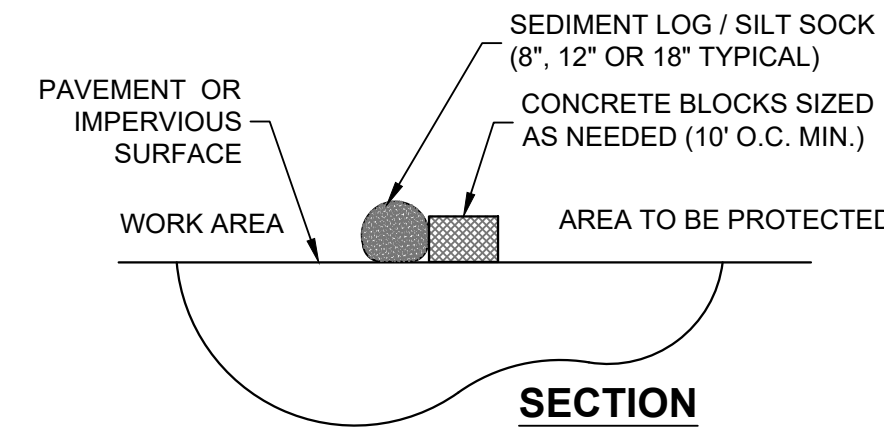
A CONSTRUCTION ENTRANCE - WDNR TS-1057
SCALE: NTS



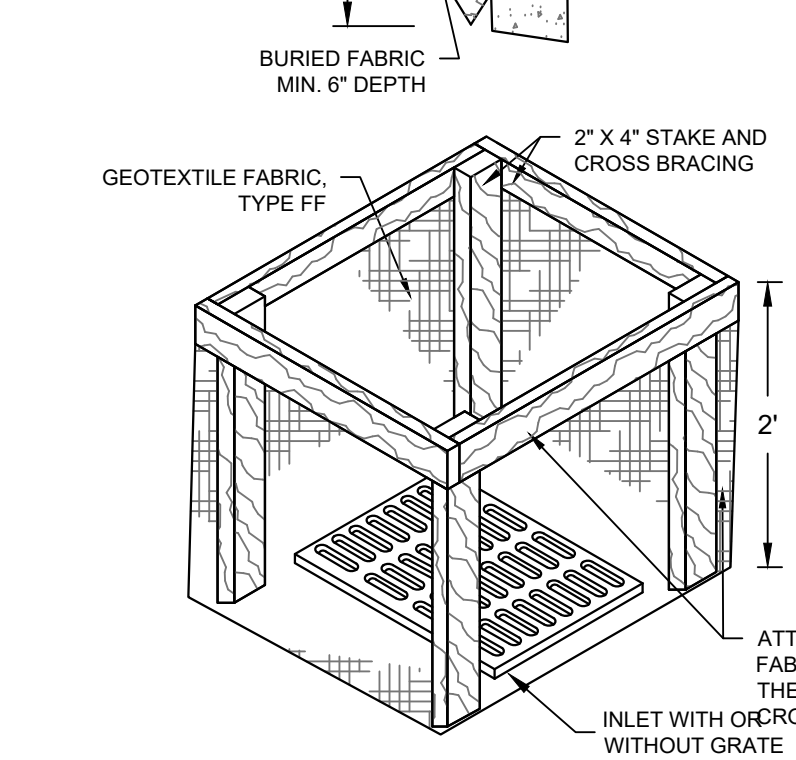
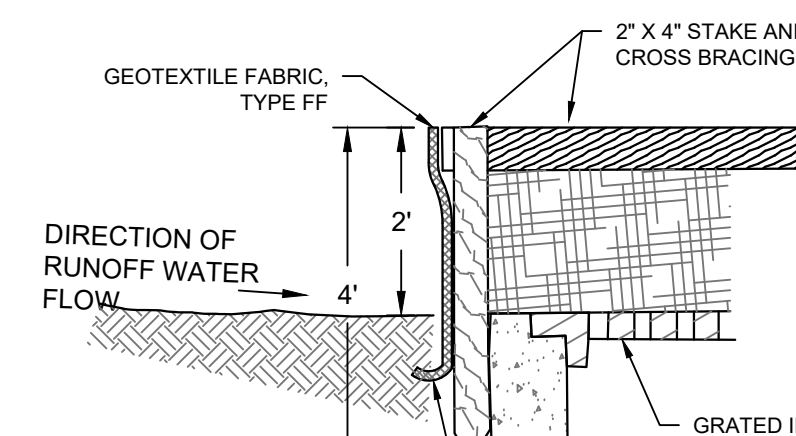
- ECRM_s (EROSION CONTROL REVEGATIVE MATS) SHALL BE INSTALLED AFTER ALL TOPSOILING, FERTILIZING, LIMING, AND SEEDING IS COMPLETE.
- THE MAT SHALL BE IN FIRM AND INTIMATE CONTACT WITH THE SOIL. IT SHALL BE INSTALLED AND ANCHORED PER THE MANUFACTURER'S RECOMMENDATION.
- TRM_s (TURF-REINFORCEMENT MAT) SHALL BE INSTALLED IN CONJUNCTION WITH THE TOPSOILING OPERATION AND SHALL BE FOLLOWED BY ECRM INSTALLATION.
- AT TIME OF INSTALLATION, DOCUMENT THE MANUFACTURER AND MAT TYPE BY RETENTION OF MATERIAL LABELS AND MANUFACTURER'S INSTALLATION INSTRUCTIONS. RETAIN THIS DOCUMENTATION UNTIL THE SITE HAS BEEN STABILIZED.

- NOTES:**
- EROSION MATTING SHALL CONFORM TO WDNR CONSERVATION PRACTICE STANDARD #1052.
 - INSTALL PER MANUFACTURER'S SPECIFICATIONS.

D EROSION MATTING - WDNR TS-1052
SCALE: NTS

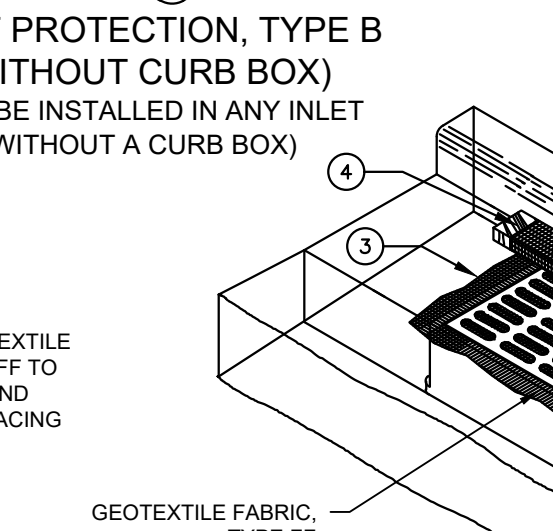
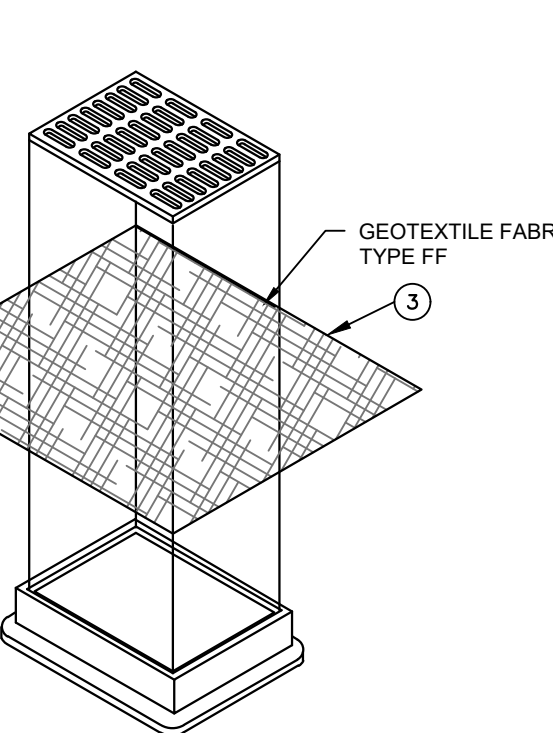


B SEDIMENT LOG - SILT SOCK ON PAVEMENT
SCALE: NTS



C INLET PROTECTION - WDNR TS-1060
SCALE: NTS

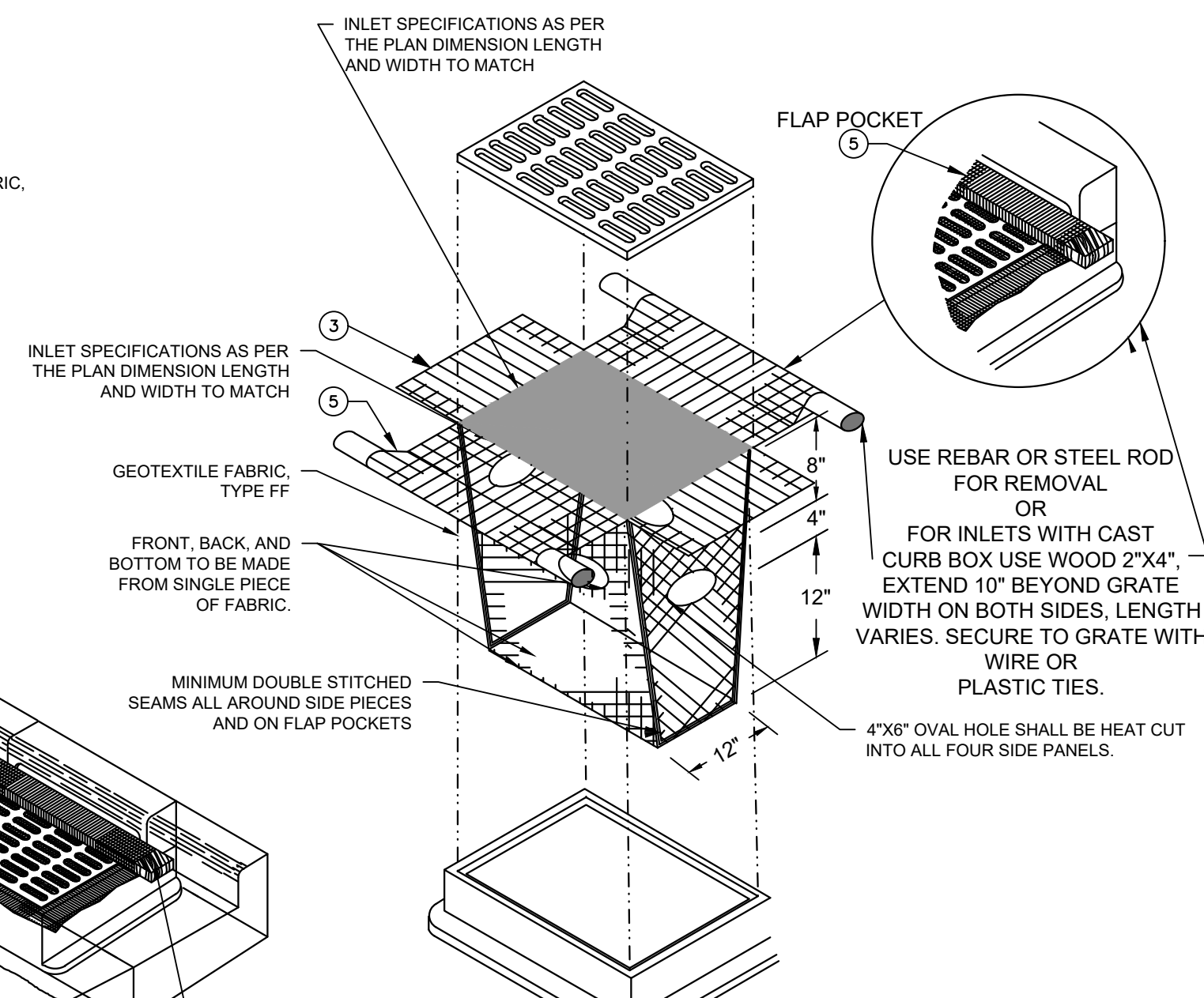
- GENERAL NOTES:**
- MANUFACTURED ALTERNATIVES APPROVED AND LISTED ON THE DEPARTMENT'S EROSION CONTROL PRODUCT ACCEPTABILITY LIST MAY BE SUBSTITUTED.
 - WHEN REMOVING OR MAINTAINING INLET PROTECTION, CARE SHALL BE TAKEN SO THAT THE SEDIMENT TRAPPED ON THE GEOTEXTILE FABRIC DOES NOT FALL INTO THE INLET. ANY MATERIAL FALLING INTO THE INLET SHALL BE REMOVED IMMEDIATELY. FINISHED SIZE, INCLUDING FLAP POCKETS WHERE REQUIRED, SHALL EXTEND A MINIMUM OF 10" AROUND THE PERIMETER TO FACILITATE MAINTENANCE OR REMOVAL FOR INLET PROTECTION, TYPE C (WITH CURB BOX), AN ADDITIONAL 18" OF FABRIC IS WRAPPED AROUND THE WOOD AND SECURED WITH STAPLES. THE WOOD SHALL NOT BLOCK THE ENTIRE HEIGHT OF THE CURB BOX OPENING. FLAP POCKETS SHALL BE LARGE ENOUGH TO ACCEPT WOOD 2X4.



INLET PROTECTION, TYPE C (WITH CURB BOX)

INSTALLATION NOTES
 TYPE B & C TRIM EXCESS FABRIC IN THE FLOW LINE TO WITHIN 3" OF THE GRATE. THE CONTRACTOR SHALL DEMONSTRATE A METHOD OF MAINTENANCE, USING A SEWN FLAP, HAND HOLDS OR OTHER METHOD TO PREVENT ACCUMULATED SEDIMENT FROM ENTERING THE INLET.

TYPE D DO NOT INSTALL INLET PROTECTION TYPE D IN INLETS SHALLOWER THAN 30", MEASURED FROM THE BOTTOM OF THE INLET TO THE TOP OF THE GRATE. TRIM EXCESS FABRIC IN THE FLOW LINE TO WITHIN 3" OF THE GRATE. THE INSTALLED BAG SHALL HAVE A MINIMUM SIDE CLEARANCE BETWEEN THE INLET WALLS AND THE BAG, MEASURED AT THE BOTTOM OF THE OVERFLOW HOLES, OF 3". WHERE NECESSARY THE CONTRACTOR SHALL CINCH THE BAG, USING PLASTIC ZIP TIES, TO ACHIEVE THE 3" CLEARANCE. THE TIES SHALL BE PLACES AT A MAXIMUM OF 4" FROM THE BOTTOM OF THE BAG.



INLET PROTECTION, TYPE D (CAN BE INSTALLED IN ANY INLET WITH OR WITHOUT A CURB BOX AS PER NOTE)

GENERAL NOTE
 INLET PROTECTION SHALL CONFORM TO WDNR CONSERVATION PRACTICE STANDARD #1060

THIS DRAWING IS BASED ON WISCONSIN DEPARTMENT OF TRANSPORTATION STANDARD DETAIL DRAWING 8 E 10-2

EROSION CONTROL NOTES:

- CONSTRUCTION SITE EROSION CONTROL AND SEDIMENTATION CONTROL SHALL COMPLY WITH THE REQUIREMENTS OF THE LOCAL MUNICIPALITY AND SHALL EMPLOY EROSION CONTROL METHODS AS SHOWN AND SPECIFIED IN THE WISCONSIN DEPARTMENT OF NATURAL RESOURCES TECHNICAL STANDARDS.
- ALL EROSION CONTROL MEASURES SHALL BE ADJUSTED TO MEET FIELD CONDITIONS AT THE TIME OF CONSTRUCTION AND SHALL BE INSTALLED PRIOR TO ANY GRADING OR DISTURBANCE OF EXISTING SURFACE MATERIAL ON THE SITE.
- EROSION AND SEDIMENT CONTROL MEASURES SHALL BE CHECKED FOR STABILITY AND OPERATION AFTER A RAINFALL OF 0.5 INCHES OR MORE, BUT NO LESS THAN ONCE EVERY WEEK. MAINTENANCE OF ALL EROSION CONTROL STRUCTURES SHALL BE PROVIDED TO INSURE INTENDED PURPOSE IS ACCOMPLISHED. CONTRACTOR SHALL BE RESPONSIBLE FOR CLEANUP AND REMOVAL OF ALL SEDIMENT WHEN LEAVING PROPERTY. EROSION CONTROL MEASURES MUST BE IN WORKING CONDITION AT END OF EACH WORK DAY. DOCUMENT AND MAINTAIN RECORDS OF INSPECTIONS IN ACCORDANCE WITH WDNR NR216 REQUIREMENTS.
- SILT FENCE SHALL BE INSTALLED IN THE LOCATIONS SHOWN ON THE CONSTRUCTION PLANS. SEDIMENT DEPOSITS SHALL BE REMOVED FROM BEHIND THE SILT FENCE WHEN DEPOSITS REACH A DEPTH OF 6 INCHES. THE SILT FENCE SHALL BE REPAIRED OR REPLACED AS NECESSARY TO MAINTAIN A BARRIER.
- FILTER FABRIC SHALL BE INSTALLED BENEATH INLET COVERS TO TRAP SEDIMENT PER INLET PROTECTION DETAIL IN THE LOCATIONS SHOWN ON THE CONSTRUCTION PLANS.
- EROSION CONTROL MEASURES SHALL BE MAINTAINED ON A CONTINUING BASIS UNTIL SITE IS FULLY STABILIZED.
- PERIODIC STREET SWEEPING SHALL BE COMPLETED TO MAINTAIN ADJACENT STREETS FREE OF DUST AND DIRT.
- SILT FENCE SHALL BE INSTALLED IN HORSESHOE FASHION AROUND ANY TOPSOIL AND FILL STOCKPILES.
- SITE DEWATERING. WATER PUMPED FROM THE SITE SHALL BE TREATED BY SEDIMENT BASINS OR OTHER APPROPRIATE MEASURES SPECIFIED IN THE WISCONSIN DEPARTMENT OF NATURAL RESOURCES TECHNICAL STANDARDS. WATER MAY NOT BE DISCHARGED IN A MANNER THAT CAUSES EROSION OF THE SITE, ADJACENT SITES, OR RECEIVING CHANNELS.
- WASTE AND MATERIAL DISPOSAL. ALL WASTE AND UNUSED BUILDING MATERIALS (INCLUDING GARBAGE, DEBRIS, CLEANING WASTES, WASTEWATER, TOXIC MATERIALS, OR HAZARDOUS MATERIALS) SHALL BE PROPERLY DISPOSED AND NOT ALLOWED TO BE CARRIED OFF-SITE BY RUNOFF OR WIND.
- TRACKING. EACH SITE SHALL HAVE GRAVELED ROADS, ACCESS DRIVES AND PARKING AREAS OF SUFFICIENT WIDTH AND LENGTH TO PREVENT SEDIMENT FROM BEING TRACKED ONTO PUBLIC OR PRIVATE ROADWAYS. ANY SEDIMENT REACHING A PUBLIC OR PRIVATE ROAD SHALL BE REMOVED BY STREET CLEANING, TO THE SATISFACTION OF THE MUNICIPALITY, BEFORE THE END OF EACH WORKDAY. FLUSHING MAY NOT BE USED UNLESS SEDIMENT WILL BE CONTROLLED BY A SEDIMENT BASIN OR PRACTICE SPECIFIED IN THE WISCONSIN DEPARTMENT OF NATURAL RESOURCES TECHNICAL STANDARDS. NOTIFY MUNICIPALITY OF ANY CHANGES IN STABILIZED CONSTRUCTION ENTRANCE LOCATION.
- SEDIMENT CLEANUP. ALL OFF-SITE SEDIMENT DEPOSITS OCCURRING AS A RESULT OF A STORM EVENT SHALL BE CLEANED UP BY THE END OF THE NEXT WORKDAY. ALL OTHER OFF-SITE SEDIMENT DEPOSITS OCCURRING AS A RESULT OF CONSTRUCTION ACTIVITIES SHALL BE CLEANED UP BY THE END OF THE WORKDAY.
- ALL DISTURBED GROUND LEFT INACTIVE FOR SEVEN OR MORE DAYS SHALL BE STABILIZED BY TEMPORARY OR PERMANENT SEEDING, MULCHING, SODDING, COVERING WITH TARPS, OR EQUIVALENT PRACTICE FOUND IN THE WISCONSIN DEPARTMENT OF NATURAL RESOURCES TECHNICAL STANDARD. IF TEMPORARY SEEDING IS USED, A PERMANENT COVER SHALL ALSO BE REQUIRED AS PART OF THE FINAL SITE STABILIZATION. SEEDING OR SODDING SHALL BE REQUIRED AS PART OF THE FINAL SITE STABILIZATION.
- SOIL OR DIRT STORAGE PILES SHALL BE LOCATED A MINIMUM OF TWENTY-FIVE FEET FROM ANY DOWNSLOPE ROAD, LAKE, STREAM, WETLAND, OR DRAINAGE CHANNEL. STRAW BALE OR FILTER FABRIC FENCES SHALL BE PLACED ON THE DOWN SLOPE SIDE OF THE PILES. IF REMAINING FOR MORE THAN THIRTY DAYS, PILES SHALL BE STABILIZED BY MULCHING, VEGETATIVE COVER, TARPS OR OTHER MEANS.
- WHEN THE DISTURBED AREA HAS BEEN STABILIZED BY PERMANENT VEGETATION OR OTHER MEANS, TEMPORARY PRACTICES, SUCH AS FILTER FABRIC FENCES, STRAW BALES, SEDIMENT AND SEDIMENT TRAPS, FOUND IN THE WISCONSIN DEPARTMENT OF NATURAL RESOURCES TECHNICAL STANDARDS SHALL BE REMOVED.
- NOTIFY THE LOCAL MUNICIPALITY HAVING JURISDICTION WITHIN TWO WORKING DAYS OF COMMENCING ANY LAND DEVELOPMENT OR LAND DISTURBING ACTIVITY.
- OBTAIN PERMISSION FROM THE LOCAL MUNICIPALITY HAVING JURISDICTION PRIOR TO MODIFYING THE EROSION CONTROL PLAN.
- REPAIR ANY SILTATION OR EROSION DAMAGE TO ADJOINING SURFACES AND DRAINAGE WAYS RESULTING FROM LAND DEVELOPMENT OR LAND DISTURBING ACTIVITIES.
- KEEP A COPY OF THE EROSION CONTROL PLAN ON SITE.
- CONTRACTOR SHALL, TO THE EXTENT POSSIBLE, MINIMIZE DISTURBANCE OF EXISTING VEGETATION DURING CONSTRUCTION.
- CONTRACTOR SHALL, TO THE EXTENT POSSIBLE, MINIMIZE COMPACTION OF TOPSOIL AND PRESERVE TOPSOIL IN GREENSPACE AREAS.
- WASH WATER FROM VEHICLES AND WHEEL WASHING SHALL BE CONTAINED AND TREATED PRIOR TO DISCHARGE.
- CONTRACTOR SHALL MAINTAIN SPILL KITS ON-SITE.
- PERMANENT TURF SEEDING OF DISTURBED AREA MUST OCCUR PRIOR TO SEPTEMBER 15TH. IF ADEQUATE TIME IS NOT AVAILABLE TO APPLY PERMANENT SEEDING PRIOR TO SEPTEMBER 15TH, THEN DISTURBED AREAS SHALL BE TEMPORARILY SEEDED WITH AN ANNUAL RYE GRASS PER WDNR TECHNICAL STANDARD 1059, WHERE THE TEMPORARY SEEDING IS NOT COMPLETED BY OCTOBER 15TH.
- IF TEMPORARY SEEDING IS NOT OCCURRED BY OCTOBER 15TH, APPLY SOIL STABILIZERS AND DORMANT SEED TO DISTURBED AREA PER WDNR TECHNICAL STANDARD 1050. INSPECT ANIONIC PAM APPLICATION AT A MINIMUM FREQUENCY OF EVERY TWO MONTHS AND REAPPLY AS NECESSARY

CONSTRUCTION SEQUENCE FOR EROSION CONTROL INCLUDES:

- INSTALL STABILIZED CONSTRUCTION ENTRANCE.
- INSTALL SILT FENCING AND INLET PROTECTION.
- INITIATE STOCKPILING OF IMPORTED MATERIAL. PLACE SILT FENCE AROUND STOCKPILE(S).
- STRIP TOPSOIL FROM STORM WATER BASIN LOCATION AND STOCKPILE.
- CONSTRUCT STORM WATER BASIN AND INSTALL TEMPORARY OUTLET AND EMERGENCY OVERFLOW. BASIN IS TO BE USED AS A SEDIMENTATION BASIN DURING THE COURSE OF CONSTRUCTION.
- CONSTRUCT DIVERSION SWALES. DIRECT RUNOFF TO STORM BASIN. INSTALL ASSOCIATED DITCH CHECKS.
- INSTALL RIP-RAP AT STORM WATER BASIN AS SHOWN ON THE PLANS.
- STRIP TOPSOIL FROM REMAINDER OF SITE IN A PROGRESSIVE MANNER, AND STOCKPILE.
- PERFORM ROUGH SITE GRADING. STABILIZE FINISHED AREAS AS THE WORK PROGRESSES. USE EROSION MATTING WHERE CALLED FOR ON THE PLANS. PER WDNR TECHNICAL STANDARD 1059: AREAS THAT RECEIVE TEMPORARY SEEDING SHALL HAVE A MINIMUM TOPSOIL DEPTH OF 2 INCHES. AREAS THAT RECEIVE PERMANENT SEEDING SHALL HAVE A MINIMAL TOPSOIL DEPTH OF 4 INCHES.
- PREPARE BUILDING PAD AND BEGIN FOUNDATIONS WORK FOR BUILDING.
- INSTALL UTILITIES. INSTALL ANY ADDITIONAL INLET PROTECTION ON NEW STORM SEWER AND INSTALL RIP-RAP AT NEW STORM SEWER OUTFALLS.
- REMOVE TEMPORARY OUTLET CONTROL STRUCTURE ON BASIN AND INSTALL PAVEMENTS.
- STABILIZE AREAS REMAINING AREAS WITHIN 7 DAYS OF COMPLETION OF FINAL GRADING AND TOPSOILING.
- REMOVE EXCESS SEDIMENT FROM STORMWATER BASINS AND RETURN BASINS TO THEIR DESIGN DIMENSIONS AND VOLUMES.
- REMOVE EROSION CONTROL MEASURES ONLY WHEN SITE IS FULLY STABILIZED.

114TH AND BLUEMOUND
 11430 - 11400 BLUEMOUND ROAD
 WAUWATOSA, WISCONSIN

EROSION CONTROL DETAILS

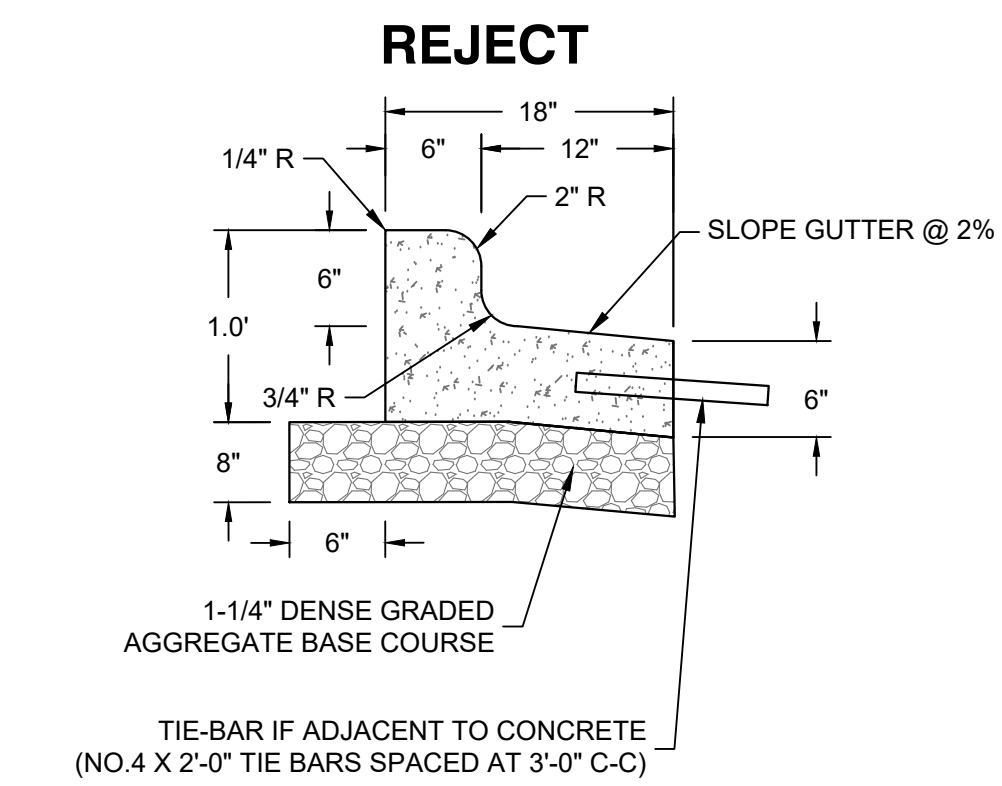
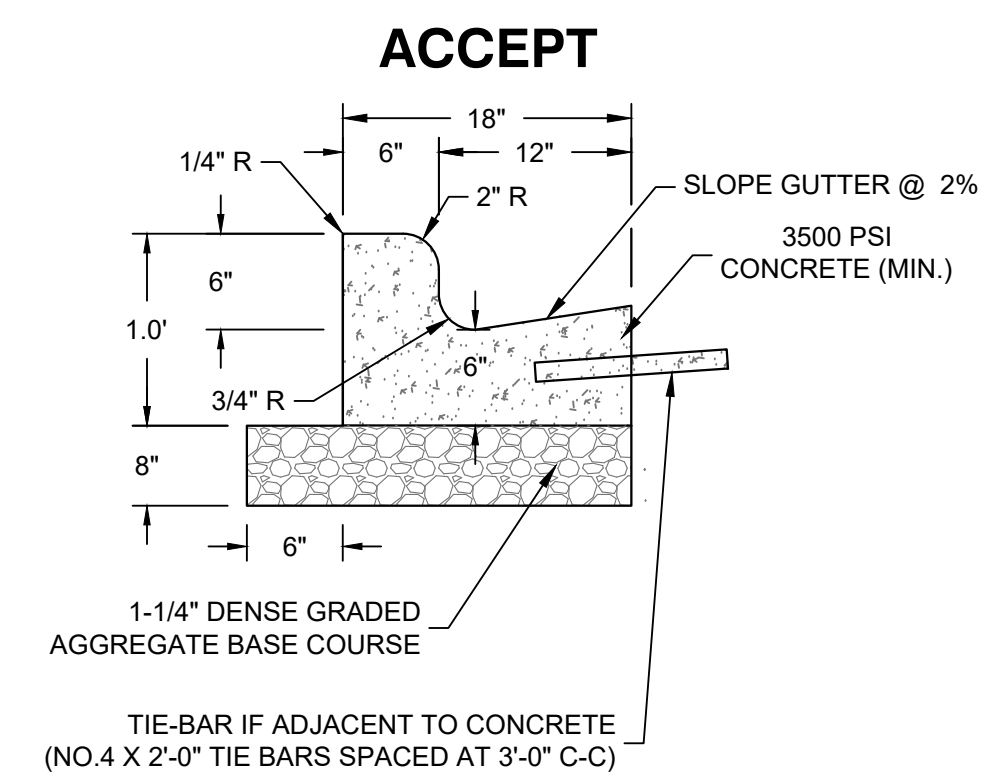
PRELIMINARY
 NOT FOR
 CONSTRUCTION

SCALE:	
PROJECT NO:	21393
DESIGN DATE:	----
PLOT DATE:	1/31/2023
DRAWN BY:	----
CHECKED BY:	----
APPROVED BY:	----
SHEET NO:	

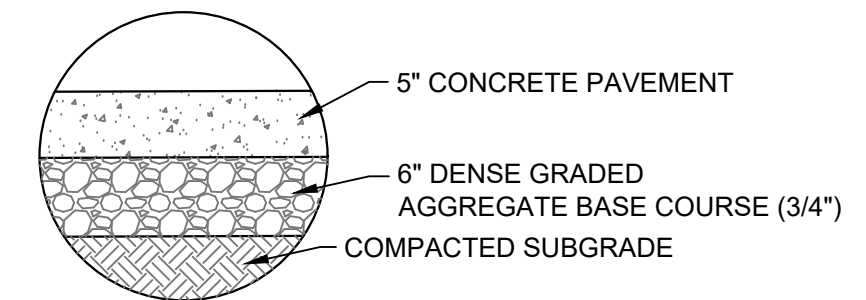
C400

**PRELIMINARY
 NOT FOR
 CONSTRUCTION**

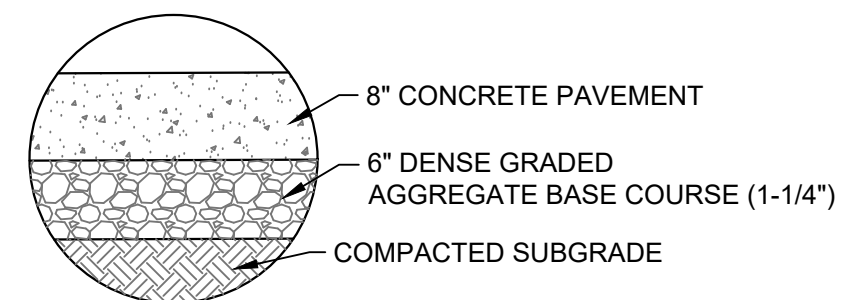
SCALE:	
PROJECT NO:	21393
DESIGN DATE:	----
PLOT DATE:	1/31/2023
DRAWN BY:	----
CHECKED BY:	----
APPROVED BY:	----
SHEET NO:	C401



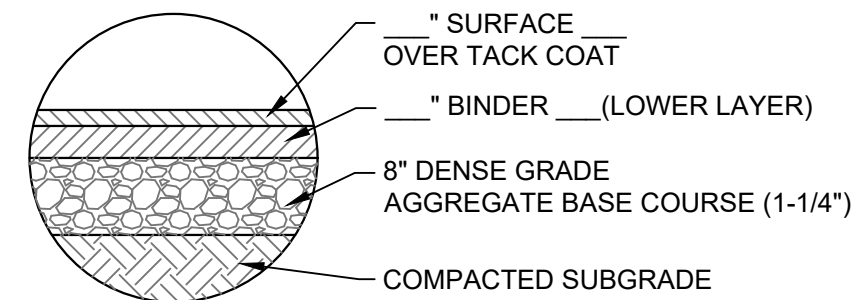
A 18 INCH CONCRETE CURB AND GUTTER
 SCALE: NTS



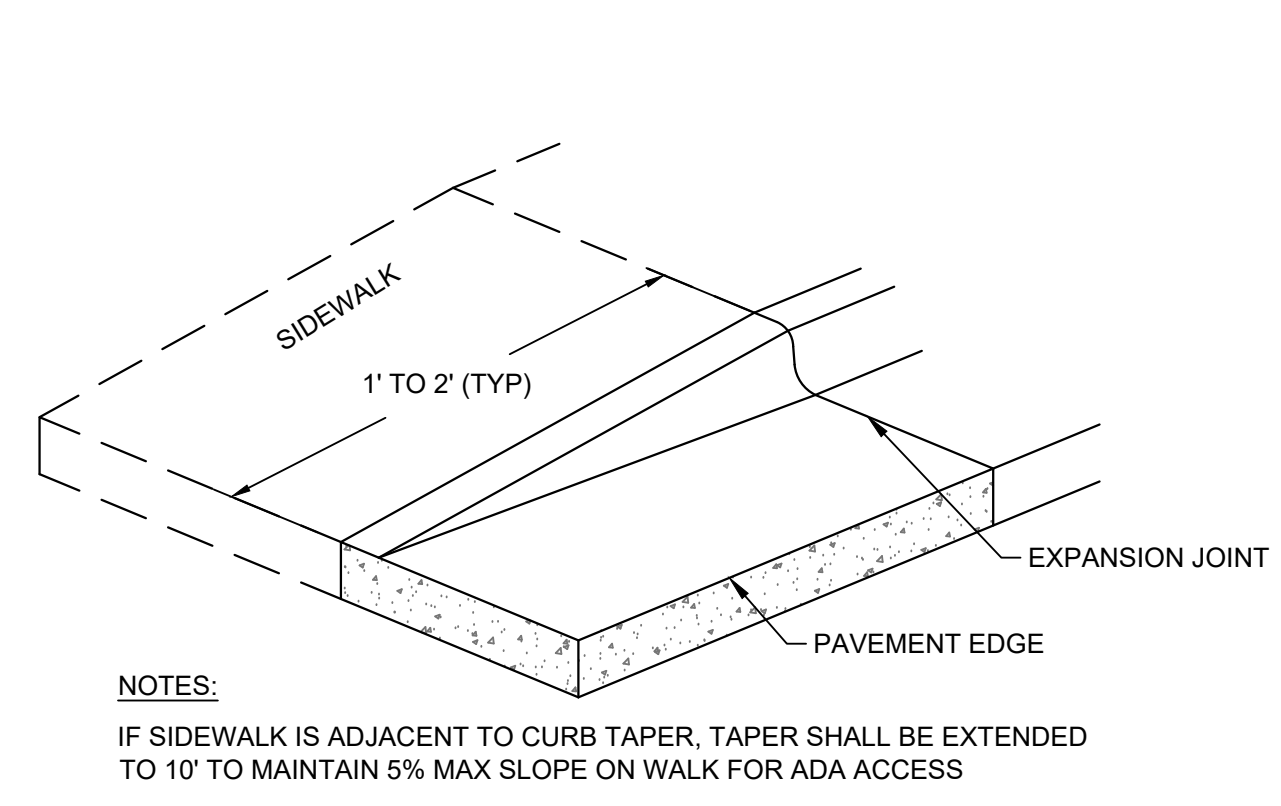
B CONCRETE SIDEWALK SECTION
 SCALE: NTS



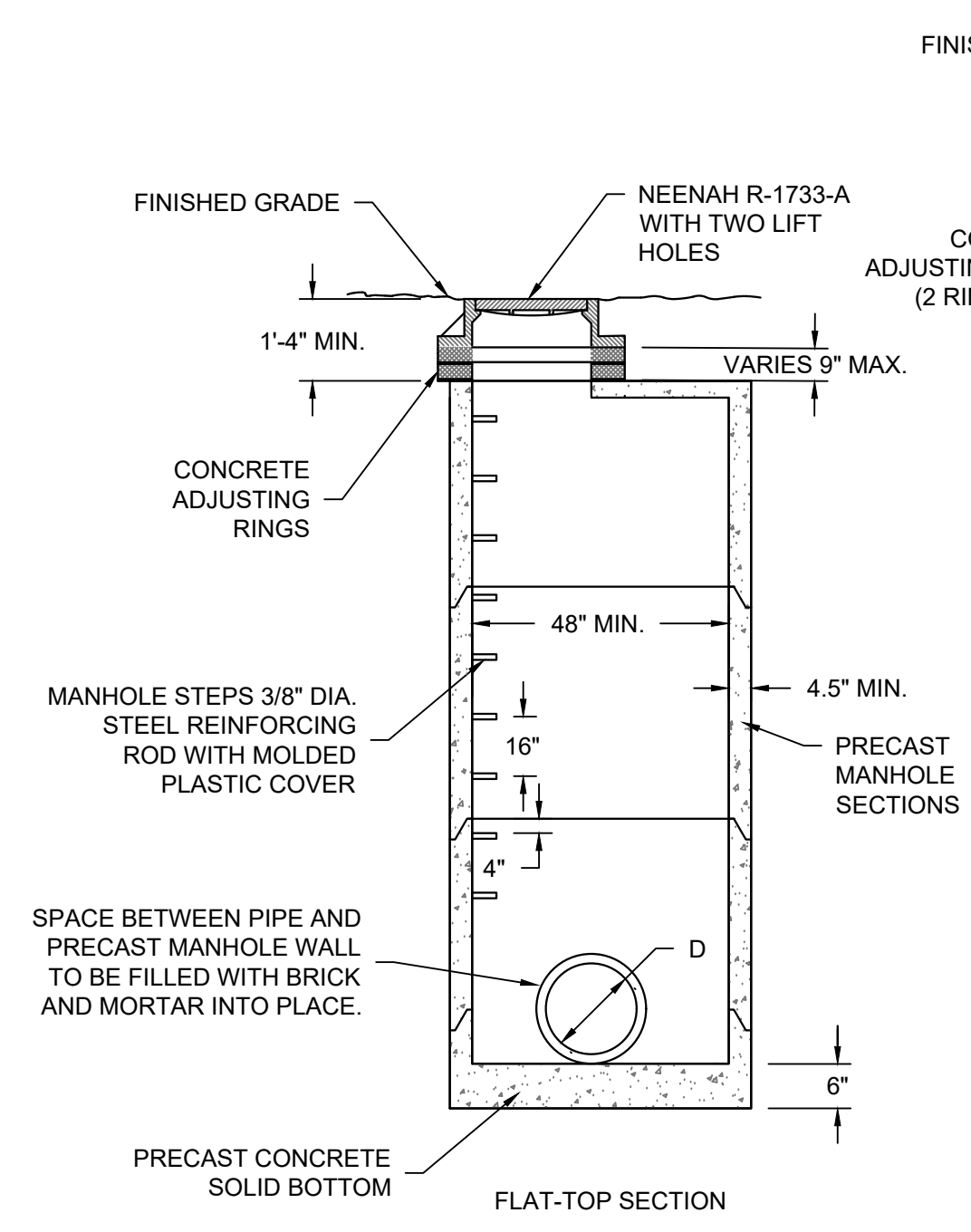
C CONCRETE PAVEMENT SECTION
 SCALE: NTS



D ASPHALT PAVEMENT SECTION
 SCALE: NTS

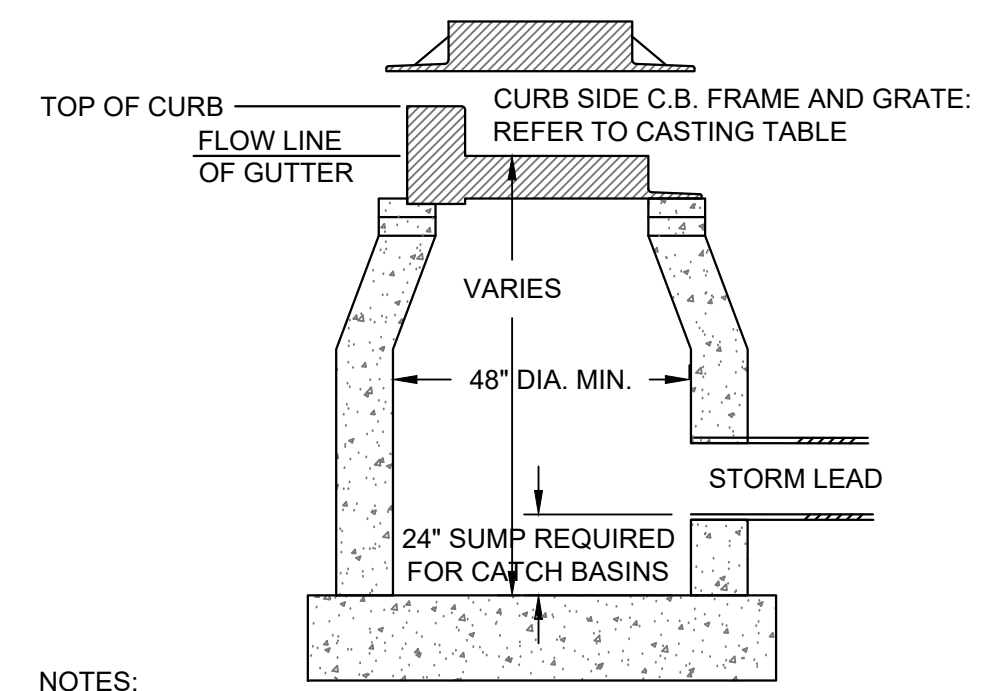
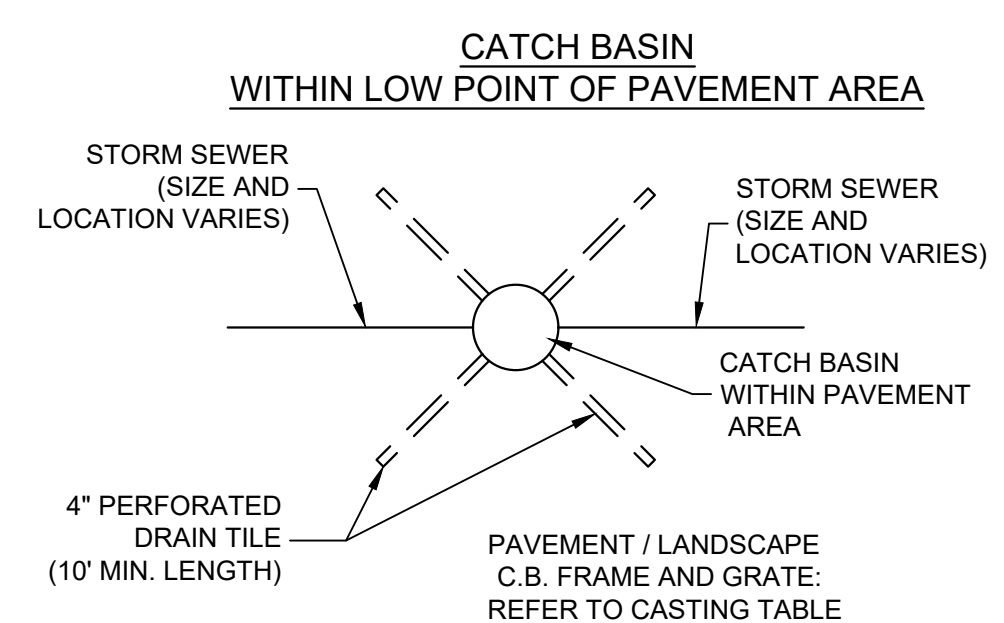


E CURB TAPER
 SCALE: NTS



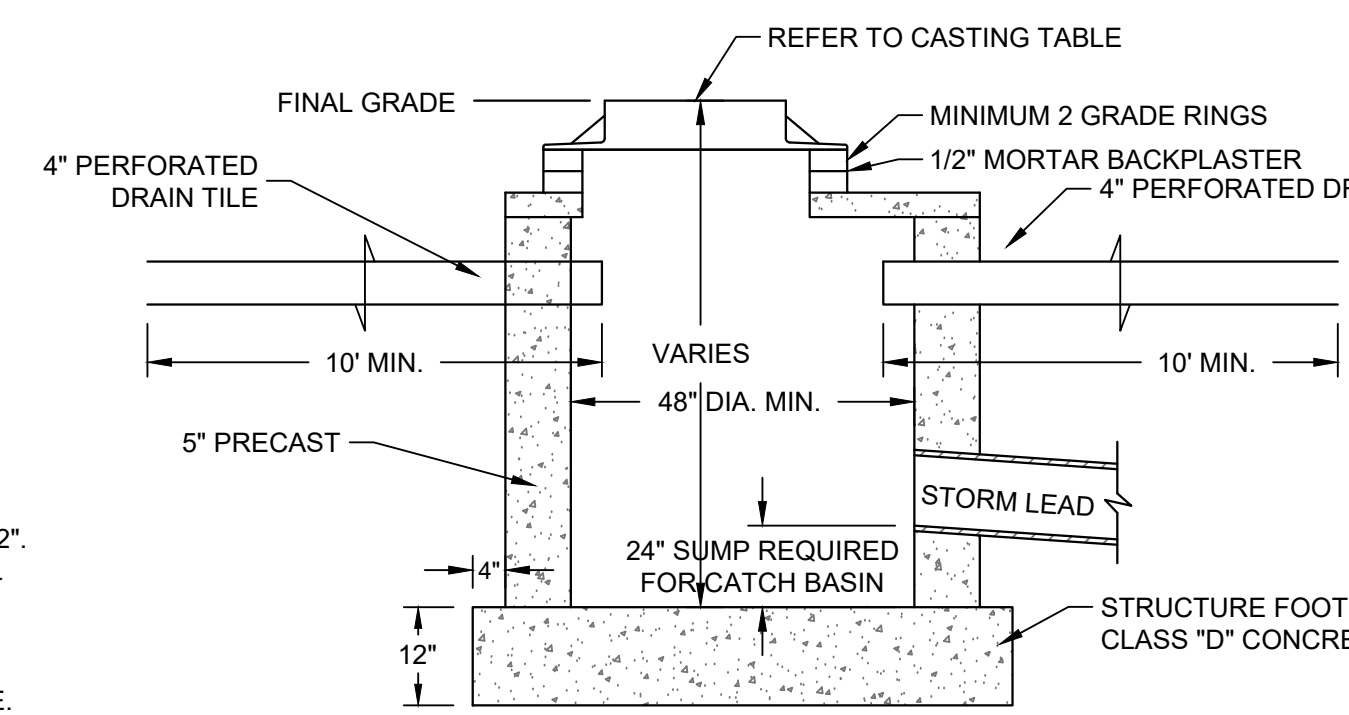
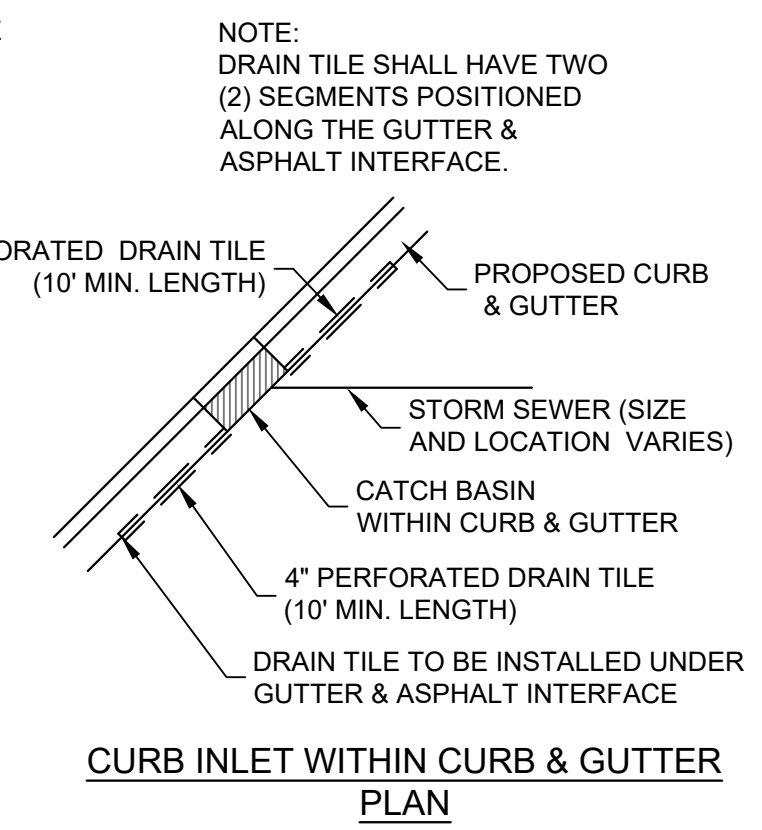
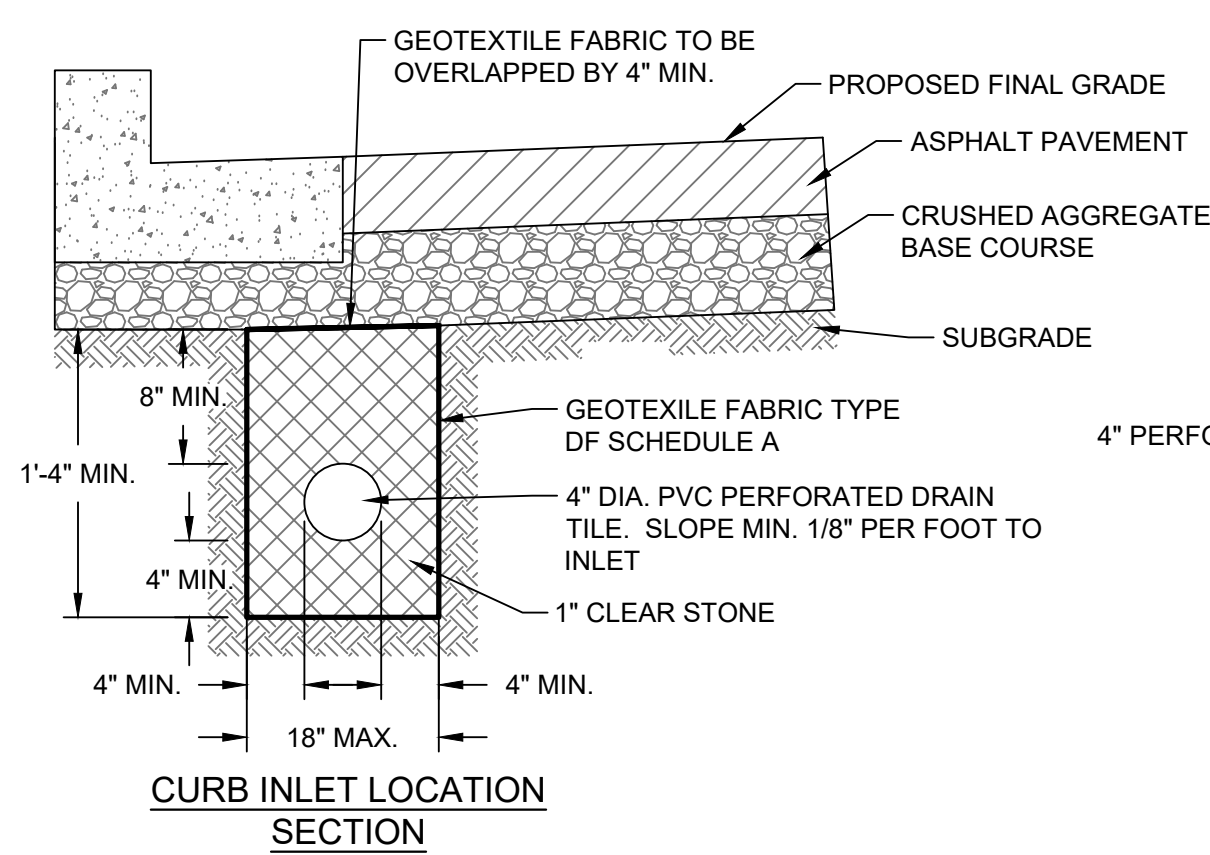
G PRECAST STORM MANHOLE
 SCALE: NTS

- NOTES:
1. CONSTRUCT MANHOLE IN ACCORDANCE WITH FILE NO. 12 OF THE STATE STANDARD SPECIFICATIONS FOR SEWER AND WATER.
 2. ADJUST FRAME TO GRADE WITH CONCRETE RINGS OF VARIABLE THICKNESS. MAXIMUM RING HEIGHT = 6". MINIMUM RING HEIGHT = 2". CONCRETE RINGS SHALL BE REINFORCED WITH ONE LINE OF STEEL CENTERED WITHIN THE RING. WHERE NECESSARY RINGS SHALL BE GROOVED TO RECEIVE STEP.
 3. CONCRETE AND REINFORCEMENT STEEL SHALL CONFORM TO THE REQUIREMENTS OF ASTM DESIGNATION C-478.
 4. JOINTS SHALL BE WATERTIGHT AND SHALL BE MADE USING MORTAR, OR FLEXIBLE RUBBER TYPE GASKETS FOR STORM MANHOLES.
 5. AREA OF CIRCUMFERENTIAL STEEL = 0.12 SQ. INCH PER LINEAL FOOT MIN.
 6. 3" OF BEDDING STONE UNDER BASE.
 7. UNLESS NOTED ON THE PLANS CONTRACTOR IS RESPONSIBLE FOR ALL MANHOLE SIZING AND SHALL PROVIDE A SHOP DRAWING TO THE SIGMA GROUP, INC. BEFORE THEY ARE RELEASED FOR PRODUCTION.



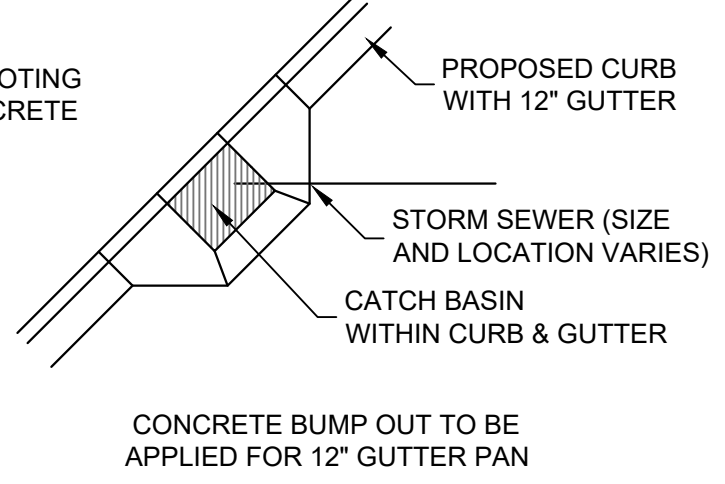
- NOTES:
1. ADJUST FRAME TO GRADE WITH CONCRETE RINGS OF VARIABLE THICKNESS. MAXIMUM RING HEIGHT = 6". MINIMUM RING HEIGHT = 2". CONCRETE RINGS SHALL BE REINFORCED WITH ONE LINE OF STEEL CENTERED WITHIN THE RING.
 2. CONCRETE AND REINFORCEMENT STEEL SHALL CONFORM TO THE REQUIREMENTS OF ASTM DESIGNATION C-478.
 3. 3" BEDDING OF STONE UNDER BASE REQUIRED ON WET SUB-GRADE.
 4. UNLESS NOTED ON THE PLANS CONTRACTOR IS RESPONSIBLE FOR ALL CATCH BASIN SIZING AND SHALL PROVIDE A SHOP DRAWING TO THE SIGMA GROUP, INC. BEFORE THEY ARE RELEASED FOR PRODUCTION.

F INLET AND CATCH BASIN
 SCALE: NTS



CATCH BASIN / INLET CASTING TABLE

IF 18" CURB & GUTTER		IF 24" CURB & GUTTER		IF 30" CURB AND GUTTER	
CASTING	GRATE	CASTING	GRATE	CASTING	GRATE
CURB INLET	NEENAH R-3067	A	NEENAH R-3067	A	NEENAH R-3228H
AREA INLET	NEENAH R-2050	C			



CONCRETE PAVING:

- 1. THE COMPOSITION, PLACING AND CONSTRUCTION OF CONCRETE PAVEMENTS SHALL BE IN ACCORDANCE WITH THE APPLICABLE REQUIREMENTS OF SECTIONS 415, 416, 501, 601, AND 602 OF THE STATE OF WISCONSIN STANDARD SPECIFICATIONS FOR HIGHWAY AND STRUCTURE CONSTRUCTION, LATEST EDITION (WISDOT STANDARD SPECIFICATIONS) AND LOCAL MUNICIPAL REQUIREMENTS AND SPECIFICATIONS.
2. CONTRACTOR SHALL PROVIDE PRODUCT DATA FOR EACH TYPE OF PRODUCT INDICATED - INCLUDE TECHNICAL DATA AND TESTED PHYSICAL AND PERFORMANCE PROPERTIES; JOB-MIX DESIGNS: CERTIFICATION THAT MIX MEETS OR EXCEEDS WISDOT STANDARD SPECIFICATIONS; AND MATERIAL CERTIFICATES CERTIFYING COMPLIANCE WITH WISDOT STANDARD SPECIFICATIONS.
3. MANUFACTURER QUALIFICATIONS: MANUFACTURER OF READY-MIXED CONCRETE PRODUCTS WHO COMPLIES WITH ASTM C 94/C 94M REQUIREMENTS FOR PRODUCTION FACILITIES AND EQUIPMENT AND APPROVED BY THE WISCONSIN DEPARTMENT OF TRANSPORTATION.
4. CONCRETE GRADE: GRADE A, GRADE A-2, OR A-FA CONFORMING TO SECTION 501.3.1.3 OF THE WISDOT STANDARD SPECIFICATIONS
5. AGGREGATES: CONFORM TO SECTION 501 OF THE WISDOT STANDARD SPECIFICATIONS. PROVIDE AGGREGATES FROM A SINGLE SOURCE.
6. WATER: ASTM C 94/C 94M AND SECTION 501 OF THE WISDOT STANDARD SPECIFICATIONS.
7. AIR-ENTRAINING ADMIXTURE: ASTM C 260 AND SECTION 501 OF THE WISDOT STANDARD SPECIFICATIONS.
8. CHEMICAL ADMIXTURES: PER SECTION 501 OF THE WISDOT STANDARD SPECIFICATIONS.
9. CURING MATERIALS IN ACCORDANCE WITH SECTION 415.3.12 OF THE WISDOT STANDARD SPECIFICATIONS.
10. EXPANSION JOINT MATERIAL: CONFORM TO SECTION 415.2.3 OF THE WISDOT STANDARD SPECIFICATIONS.
11. MEASURE, BATCH, AND MIX CONCRETE MATERIALS AND CONCRETE IN ACCORDANCE WITH SECTION 501 OF THE WISDOT STANDARD SPECIFICATIONS.
12. GENERAL EXECUTION: CONFORM TO SECTION 415 OF THE WISDOT STANDARD SPECIFICATIONS.
13. PROOFROLL SUBGRADE AND AGGREGATE BASE AS OUTLINED IN EARTH MOVING SPECIFICATION PRIOR TO PLACEMENT OF PAVEMENTS.
14. SET, BRACE, AND SECURE EDGE FORMS, BULKHEADS, AND INTERMEDIATE SCREED GUIDES FOR PAVEMENT TO REQUIRED LINES, GRADES, AND ELEVATIONS. INSTALL FORMS TO ALLOW CONTINUOUS PROGRESS OF WORK AND SO FORMS CAN REMAIN IN PLACE AT LEAST 24 HOURS AFTER CONCRETE PLACEMENT.
15. CLEAN FORMS AFTER EACH USE AND COAT WITH FORM-RELEASE AGENT TO ENSURE SEPARATION FROM CONCRETE WITHOUT DAMAGE.
16. JOINTS GENERAL: FORM CONSTRUCTION, ISOLATION, AND CONTRACTION JOINTS AND TOOL EDGINGS TRUE TO LINE WITH FACES PERPENDICULAR TO SURFACE PLANE OF CONCRETE. CONSTRUCT TRANSVERSE JOINTS AT RIGHT ANGLES TO CENTERLINE, UNLESS OTHERWISE INDICATED. CONFORM TO SECTION 415 OF THE WISDOT STANDARD SPECIFICATIONS
17. CONSTRUCTION JOINTS: SET CONSTRUCTION JOINTS AT SIDE AND END TERMINATIONS OF PAVEMENT AND AT LOCATIONS WHERE PAVEMENT OPERATIONS ARE STOPPED FOR MORE THAN ONE-HALF HOUR UNLESS PAVEMENT TERMINATES AT ISOLATION JOINTS.
18. ISOLATION JOINTS: FORM ISOLATION JOINTS OF PREFORMED JOINT-FILLER STRIPS ABUTTING CONCRETE CURBS, CATCH BASINS, MANHOLES, INLETS, STRUCTURES, WALLS, OTHER FIXED OBJECTS, AND WHERE INDICATED.
19. CONTRACTION JOINTS: FORM WEAKENED-PLANE CONTRACTION JOINTS, SECTIONING CONCRETE INTO AREAS AS INDICATED. CONSTRUCT CONTRACTION JOINTS FOR A DEPTH EQUAL TO AT LEAST ONE-FOURTH OF THE CONCRETE THICKNESS TO MATCH JOINTING OF EXISTING ADJACENT CONCRETE PAVEMENT.
20. EDGING: TOOL EDGES OF PAVEMENT, GUTTERS, CURBS, AND JOINTS IN CONCRETE AFTER INITIAL FLOATING WITH AN EDGING TOOL TO A 1/4-INCH RADIUS. REPEAT TOOLING OF EDGES AFTER APPLYING SURFACE FINISHES. ELIMINATE TOOL MARKS ON CONCRETE SURFACES.
21. CURBING: COMPLY WITH SECTION 601 OF THE WISDOT STANDARD SPECIFICATIONS.
22. SIDEWALKS: COMPLY WITH SECTION 602 OF THE WISDOT STANDARD SPECIFICATIONS.
23. MOISTEN AGGREGATE TO PROVIDE A UNIFORM DAMPENED CONDITION AT TIME CONCRETE IS PLACED.
24. FINISH CURBING IN ACCORDANCE WITH SECTION 601.3.5 OF THE WISDOT STANDARD SPECIFICATIONS.
25. FINISH SIDEWALK AND PATIO IN ACCORDANCE WITH SECTION 602.3.2.3 OF THE WISDOT STANDARD SPECIFICATIONS (LIGHT BROOM FINISH).
26. FINISH CONCRETE VEHICULAR PAVEMENTS AND PADS IN ACCORDANCE WITH SECTION 415.3.8 OF THE WISDOT STANDARD SPECIFICATIONS (ARTIFICIAL TURF DRAG FINISH).
27. PROTECT AND CURE SIDEWALK IN ACCORDANCE WITH SECTION 602.3.2.6 OF THE WISDOT STANDARD SPECIFICATIONS.
28. PROTECT AND CURE CURBING IN ACCORDANCE WITH SECTION 601.3.7 OF THE WISDOT STANDARD SPECIFICATIONS.
29. PROTECT AND CURE VEHICULAR CONCRETE PAVING IN ACCORDANCE WITH SECTION 415.3.12 OF THE WISDOT STANDARD SPECIFICATIONS.
30. REMOVE AND REPLACE CONCRETE PAVEMENT THAT IS BROKEN, DAMAGED, OR DEFECTIVE OR THAT DOES NOT COMPLY WITH REQUIREMENTS IN THIS SECTION.
31. PROTECT CONCRETE FROM DAMAGE. EXCLUDE TRAFFIC FROM PAVEMENT FOR AT LEAST 7 DAYS AFTER PLACEMENT.
32. MAINTAIN CONCRETE PAVEMENT FREE OF STAINS, DISCOLORATION, DIRT, AND OTHER FOREIGN MATERIAL. SWEEP CONCRETE PAVEMENT NOT MORE THAN TWO DAYS BEFORE DATE SCHEDULED FOR SUBSTANTIAL COMPLETION INSPECTIONS.

ASPHALTIC PAVING:

- 1. THE COMPOSITION, PLACING AND CONSTRUCTION OF ASPHALTIC PAVEMENTS SHALL BE IN ACCORDANCE WITH THE REQUIREMENTS OF SECTIONS 450, 455, 460, 465, AND 475 OF THE STATE OF WISCONSIN STANDARD SPECIFICATIONS FOR HIGHWAY AND STRUCTURE CONSTRUCTION, LATEST EDITION (WISDOT STANDARD SPECIFICATIONS).
2. CONTRACTOR SHALL PROVIDE PRODUCT DATA FOR EACH TYPE OF PRODUCT INDICATED - INCLUDE TECHNICAL DATA AND TESTED PHYSICAL AND PERFORMANCE PROPERTIES; JOB-MIX DESIGNS: CERTIFICATION THAT MIX MEETS OR EXCEEDS WISDOT STANDARD SPECIFICATIONS; AND MATERIAL CERTIFICATES CERTIFYING COMPLIANCE WITH WISDOT STANDARD SPECIFICATIONS.
3. MANUFACTURER QUALIFICATIONS: MANUFACTURER SHALL BE REGISTERED WITH AND APPROVED BY THE DOT OF THE STATE IN WHICH PROJECT IS LOCATED.
4. ENVIRONMENTAL LIMITATIONS: DO NOT APPLY ASPHALT MATERIALS IF BASE COURSE IS WET OR EXCESSIVELY DAMP OR IF THE FOLLOWING CONDITIONS ARE NOT MET: APPLY TACK COAT WHEN AMBIENT TEMPERATURE IS ABOVE 50 DEGREES FAHRENHEIT AND WHEN TEMPERATURE HAS NOT BEEN BELOW 35 DEGREES FAHRENHEIT FOR 12 HOURS IMMEDIATELY PRIOR TO APPLICATION; PLACE ASPHALTIC CONCRETE SURFACE COURSE WHEN TEMPERATURE IS ABOVE 40 DEGREES FAHRENHEIT; BASE COURSE MAY BE PLACED WHEN AIR TEMPERATURE IS ABOVE 30 DEGREES FAHRENHEIT AND RISING. PROCEED WITH PAVEMENT MARKING ONLY ON CLEAN, DRY SURFACES. DO NOT APPLY BELOW THE MINIMUM PAVEMENT TEMPERATURE AS RECOMMENDED BY THE MANUFACTURER.
5. AGGREGATES SHALL BE IN ACCORDANCE WITH SECTION 460.2.2 OF THE WISDOT STANDARD SPECIFICATIONS.
6. ASPHALT MATERIALS SHALL BE IN ACCORDANCE WITH CHAPTER 455 OF THE WISDOT STANDARD SPECIFICATIONS.
7. PAVEMENT MARKING PAINT: PROVIDE PAINT FROM THE WISCONSIN DEPARTMENT OF TRANSPORTATION'S APPROVED PRODUCTS LIST. COLOR SHALL BE WHITE UNLESS INDICATED OTHERWISE ON PLANS.
8. HOT-MIX ASPHALT: ASPHALTIC BINDER COURSE AND SURFACE COURSE SHALL BE MIXTURE LT FOR REGULAR DUTY PAVEMENT AND LT FOR HEAVY DUTY PAVEMENT COMPLYING WITH THE WISDOT STANDARD SPECIFICATIONS. ASPHALTIC BINDER SHALL BE 58-28 S UNLESS NOTED.
9. AGGREGATE BASE COURSE BENEATH PAVEMENTS: SHALL BE 1-1/4" DENSE GRADED BASE COURSE CONFORMING TO SECTION 305 OF THE WISDOT STANDARD SPECIFICATIONS.
10. PAVEMENT PLACEMENT GENERAL: ASPHALT CONCRETE PAVING EQUIPMENT, WEATHER LIMITATIONS, JOB-MIX FORMULA, MIXING, CONSTRUCTION METHODS, COMPACTION, FINISHING, TOLERANCE AND PROTECTION SHALL CONFORM TO THE REQUIREMENTS OF THE APPROPRIATE SECTIONS OF THE WISDOT STANDARD SPECIFICATIONS.
11. PREPARE AND PROOFROLL SUBGRADES AND AGGREGATE BASE COURSE AS OUTLINED IN EARTH MOVING SPECIFICATIONS PRIOR TO PLACEMENT OF ASPHALT PAVEMENTS.
12. SWEEP LOOSE GRANULAR PARTICLES FROM SURFACE OF AGGREGATE BASE COURSE PRIOR TO PAVEMENT PLACEMENT. DO NOT DISLODGE OR DISTURB AGGREGATE EMBEDDED IN COMPACTED SURFACE OF BASE COURSE.
13. SPREAD AND FINISH ASPHALTIC MIXTURE IN ACCORDANCE WITH SECTION 450.3.2.5 OF THE WISDOT STANDARD SPECIFICATIONS. PAVEMENT THICKNESSES SHALL BE AS INDICATED ON THE PLANS.
14. PROMPTLY CORRECT SURFACE IRREGULARITIES IN PAVING COURSE BEHIND PAVER. USE SUITABLE HAND TOOLS TO REMOVE EXCESS MATERIAL FORMING HIGH SPOTS. FILL DEPRESSIONS WITH HOT-MIX ASPHALT TO PREVENT SEGREGATION OF MIX; USE SUITABLE HAND TOOLS TO SMOOTH SURFACE.
15. COMPACT ASPHALTIC PAVEMENT IN ACCORDANCE WITH SECTION 450.3.2.6 OF THE WISDOT STANDARD SPECIFICATIONS.
16. PROTECTION: AFTER FINAL ROLLING, DO NOT PERMIT VEHICULAR TRAFFIC ON PAVEMENT UNTIL IT HAS COOLED AND HARDENED. ERECT BARRICADES TO PROTECT PAVING FROM TRAFFIC UNTIL MIXTURE HAS COOLED ENOUGH NOT TO BECOME MARKED.
17. THICKNESS TOLERANCE: COMPACT EACH COURSE TO PRODUCE THE THICKNESS INDICATED WITHIN PLUS/MINUS 1/4 INCH FOR BINDER COURSE AND PLUS 1/4 INCH FOR SURFACE COURSE, NO MINUS.
18. SURFACE SMOOTHNESS TOLERANCE: COMPACT EACH COURSE TO PRODUCE A SURFACE SMOOTHNESS WITHIN THE FOLLOWING TOLERANCES AS DETERMINED BY USING A 10-FOOT STRAIGHTEDGE APPLIED TRANSVERSELY OR LONGITUDINALLY TO PAVED AREAS: BINDER COURSE: 1/4 INCH; SURFACE COURSE: 1/8 INCH. REMOVE AND REPLACE ALL HUMPS OR DEPRESSIONS EXCEEDING THE SPECIFIED TOLERANCES.
19. DO NOT APPLY PAVEMENT-MARKING PAINT UNTIL LAYOUT, COLORS, AND PLACEMENT HAVE BEEN VERIFIED WITH ENGINEER.
20. APPLY MARKINGS TO A DRY SURFACE FREE FROM FROST. REMOVE DUST, DIRT, OIL, GREASE, GRAVEL, DEBRIS OR OTHER MATERIAL THAT MAY PREVENT BONDING TO THE PAVEMENT.
21. APPLY PAINT AS THE MANUFACTURER SPECIFIES WITH MECHANICAL EQUIPMENT TO PRODUCE PAVEMENT MARKINGS, OF DIMENSIONS INDICATED, WITH UNIFORM, STRAIGHT EDGES. APPLY AT MANUFACTURER'S RECOMMENDED RATES AT A MINIMUM RATE OF 17.6 GALLONS/MILE FOR A CONTINUOUS 4" LINE.
22. TESTING AGENCY: CONTRACTOR SHALL ENGAGE A QUALIFIED INDEPENDENT TESTING AND INSPECTING AGENCY TO PERFORM FIELD TESTS AND INSPECTIONS AND TO PREPARE TEST REPORTS.

SEGMENTAL RETAINING WALL:

- 1. WORK SHALL CONSIST OF FURNISHING DETAILED DESIGN, MATERIALS, LABOR, EQUIPMENT AND SUPERVISION TO INSTALL A SEGMENTAL RETAINING WALL SYSTEM IN ACCORDANCE WITH PLANS AND SPECIFICATIONS AND IN REASONABLY CLOSE CONFORMITY WITH THE LINES, GRADES, DESIGN AND DIMENSIONS SHOWN ON PLANS.
2. MATERIALS SUBMITTALS: THE CONTRACTOR SHALL SUBMIT MANUFACTURERS' CERTIFICATIONS TWO WEEKS PRIOR TO START OF WORK STATING THAT THE SRW UNITS AND GEOSYNTHETIC REINFORCEMENT MEET THE REQUIREMENTS OF THE DESIGN.
3. DESIGN SUBMITTAL: THE CONTRACTOR SHALL SUBMIT TWO SETS OF DETAILED DESIGN CALCULATIONS AND FINAL RETAINING WALL PLANS FOR APPROVAL AT LEAST TWO WEEKS PRIOR TO THE BEGINNING OF WALL CONSTRUCTION. ALL CALCULATIONS AND DRAWINGS SHALL BE PREPARED AND SEALED BY A PROFESSIONAL CIVIL ENGINEER (P.E.) (WALL DESIGN ENGINEER) EXPERIENCED IN SRW DESIGN AND LICENSED IN THE STATE WHERE THE WALL IS TO BE BUILT.
4. SEGMENTAL RETAINING WALL (SRW) UNITS SHALL BE MACHINE FORMED, PORTLAND CEMENT CONCRETE BLOCKS SPECIFICALLY DESIGNED FOR RETAINING WALL APPLICATIONS. SRW UNITS SHALL BE VERSA-LOK STANDARD RETAINING WALL UNITS, KEYSTONE RETAINING WALL UNITS, ROCKWOOD RETAINING WALL UNITS OR APPROVED EQUAL.
5. COLOR AND STYLE OF SRW UNITS SHALL BE AS SELECTED BY ARCHITECT AND OWNER FROM MANUFACTURER'S FULL RANGE.
6. SRW UNITS SHALL BE CAPABLE OF BEING ERECTED WITH THE HORIZONTAL GAP BETWEEN ADJACENT UNITS NOT EXCEEDING 1/8 INCH.
7. SRW UNITS SHALL BE SOUND AND FREE OF CRACKS OR OTHER DEFECTS THAT WOULD INTERFERE WITH THE PROPER PLACING OF THE UNIT OR SIGNIFICANTLY IMPAIR THE STRENGTH OR PERMANENCE OF THE STRUCTURE. ANY CRACKS OR CHIPS OBSERVED DURING CONSTRUCTION SHALL FALL WITHIN THE GUIDELINES OUTLINED IN ASTM C 1372.
8. CONCRETE SRW UNITS SHALL CONFORM TO THE REQUIREMENTS OF ASTM 1372 AND HAVE A MINIMUM NET AVERAGE 28 DAYS COMPRESSIVE STRENGTH OF 3000 PSI. COMPRESSIVE STRENGTH TEST SPECIMENS SHALL CONFORM TO THE SAW-CUT COUPON PROVISIONS OF ASTM C140.
9. SRW UNITS' MOLDED DIMENSIONS SHALL NOT DIFFER MORE THAN + 1/8 INCH FROM THAT SPECIFIED, AS MEASURED IN ACCORDANCE WITH ASTM C 140. THIS TOLERANCE DOES NOT APPLY TO ARCHITECTURAL SURFACES, SUCH AS SPLIT FACES.
10. SRW UNITS SHALL BE INTERLOCKED WITH CONNECTION PINS. THE PINS SHALL CONSIST OF GLASS-REINFORCED NYLON MADE FOR THE EXPRESSED USE WITH THE SRW UNITS SUPPLIED.
11. GEOSYNTHETIC REINFORCEMENT SHALL CONSIST OF HIGH-TENACITY PET GEOGRIDS, HDPE GEOGRIDS, OR GEOTEXTILES MANUFACTURED FOR SOIL REINFORCEMENT APPLICATIONS. THE TYPE, STRENGTH AND PLACEMENT OF THE GEOSYNTHETIC REINFORCEMENT SHALL BE DETERMINED BY PROCEDURES OUTLINED IN THIS SPECIFICATION AND THE NCMA DESIGN MANUAL FOR SEGMENTAL RETAINING WALLS (3RD EDITION 2009) AND MATERIALS SHALL BE SPECIFIED BY WALL DESIGN ENGINEER IN THEIR FINAL WALL PLANS AND SPECIFICATIONS. THE MANUFACTURER'S/SUPPLIER'S OF THE GEOSYNTHETIC REINFORCEMENT SHALL HAVE DEMONSTRATED CONSTRUCTION OF SIMILAR SIZE AND TYPES OF SEGMENTAL RETAINING WALLS ON PREVIOUS PROJECTS.
12. THE TYPE, STRENGTH AND PLACEMENT OF THE REINFORCING GEOSYNTHETIC SHALL BE AS DETERMINED BY THE WALL DESIGN ENGINEER, AS SHOWN ON THE FINAL, P.E.-STAMPED RETAINING WALL PLANS.
13. MATERIAL FOR LEVELING PAD SHALL CONSIST OF COMPACTED SAND, GRAVEL, OR COMBINATION THEREOF (USCS SOIL TYPES GP, GW, SP, & SW) AND SHALL BE A MINIMUM OF 6 INCHES IN DEPTH. LEAN CONCRETE WITH A STRENGTH OF 200-300 PSI AND 3 INCHES THICK MAXIMUM MAY ALSO BE USED AS A LEVELING PAD MATERIAL. THE LEVELING PAD SHOULD EXTEND LATERALLY AT LEAST A DISTANCE OF 6 INCHES FROM THE TOE AND HEEL OF THE LOWERMOST SRW UNIT.
14. DRAINAGE AGGREGATE SHALL BE ANGULAR, CLEAN STONE OR GRANULAR FILL MEETING THE FOLLOWING GRADATION AS DETERMINED IN ACCORDANCE WITH ASTM D422:
SIEVE SIZE PERCENT PASSING
1 INCH 100
3/4 INCH 75-100
NO. 4 0-60
NO. 40 0-50
NO. 200 0-5
15. THE DRAINAGE COLLECTION PIPE SHALL BE A PERFORATED OR SLOTTED PVC, OR CORRUGATED HDPE PIPE. THE DRAINAGE PIPE MAY BE WRAPPED WITH A GEOTEXTILE TO FUNCTION AS A FILTER. DRAINAGE PIPE SHALL BE MANUFACTURED IN ACCORDANCE WITH ASTM F 405 OR ASTM F 758.
16. THE REINFORCED SOIL MATERIAL SHALL BE FREE OF DEBRIS. UNLESS OTHERWISE NOTED ON THE FINAL, P.E.-SEALED, RETAINING WALL PLANS PREPARED BY THE WALL DESIGN ENGINEER, THE REINFORCED MATERIAL SHALL CONSIST OF THE INORGANIC USCS SOIL TYPES GP, GW, SW, SP, SM, MEETING THE FOLLOWING GRADATION, AS DETERMINED IN ACCORDANCE WITH ASTM D422:
SIEVE SIZE PERCENT PASSING
1 INCH 100
NO. 4 20-100
NO. 40 0-60
NO. 200 0-35
17. THE MAXIMUM PARTICLE SIZE OF POORLY-GRADED GRAVELS (GP) (NO FINES) SHOULD NOT EXCEED 3/4 INCH UNLESS EXPRESSLY APPROVED BY THE WALL DESIGN ENGINEER AND THE LONG-TERM DESIGN STRENGTH (LTDS) OF THE GEOSYNTHETIC IS REDUCED TO ACCOUNT FOR ADDITIONAL INSTALLATION DAMAGE FROM PARTICLES LARGER THAN THIS MAXIMUM.
18. THE PLASTICITY OF THE FINE FRACTION SHALL BE LESS THAN 20.
19. THE PH OF THE BACKFILL MATERIAL SHALL BE BETWEEN 3 AND 9 WHEN TESTED IN ACCORDANCE WITH ASTM G 51.
20. DRAINAGE GEOTEXTILE SHALL CONSIST OF GEOSYNTHETIC SPECIFICALLY MANUFACTURED FOR USE AS A PERMEABLE SOIL FILTER THAT RETAINS SOIL WHILE STILL ALLOWING WATER TO PASS THROUGHOUT THE LIFE OF THE STRUCTURE. THE TYPE AND PLACEMENT OF THE GEOTEXTILE FILTER MATERIAL SHALL BE AS REQUIRED BY THE WALL DESIGN ENGINEER IN THEIR FINAL WALL PLANS AND SPECIFICATIONS.
21. THE DESIGN ANALYSIS FOR THE FINAL, P.E.-STAMPED RETAINING WALL PLANS PREPARED BY THE WALL DESIGN ENGINEER SHALL CONSIDER THE EXTERNAL STABILITY AGAINST SLIDING AND OVERTURNING, INTERNAL STABILITY AND FACIAL STABILITY OF THE REINFORCED SOIL MASS, AND SHALL BE IN ACCORDANCE WITH ACCEPTABLE ENGINEERING PRACTICE AND THESE SPECIFICATIONS. THE INTERNAL AND EXTERNAL STABILITY ANALYSIS SHALL BE PERFORMED IN ACCORDANCE WITH THE "NCMA DESIGN MANUAL FOR SEGMENTAL RETAINING WALLS, 3RD EDITION" USING THE RECOMMENDED MINIMUM FACTORS OF SAFETY IN THIS MANUAL.
22. EXTERNAL STABILITY ANALYSIS FOR BEARING CAPACITY, GLOBAL STABILITY, AND TOTAL AND DIFFERENTIAL SETTLEMENT SHALL BE THE RESPONSIBILITY OF THE OWNER AND THE OWNER'S GEOTECHNICAL ENGINEER. THE GEOTECHNICAL ENGINEER SHALL PERFORM BEARING CAPACITY, SETTLEMENT ESTIMATES, AND GLOBAL STABILITY ANALYSIS BASED ON THE FINAL WALL DESIGN PROVIDED BY THE WALL DESIGN ENGINEER AND COORDINATE ANY REQUIRED CHANGES WITH THE WALL DESIGN ENGINEER.
23. THE GEOSYNTHETIC PLACEMENT IN THE WALL DESIGN SHALL HAVE 100% CONTINUOUS COVERAGE PARALLEL TO THE WALL FACE. GAPPING BETWEEN HORIZONTALLY ADJACENT LAYERS OF GEOSYNTHETIC (PARTIAL COVERAGE) WILL NOT BE ALLOWED.
24. CONTRACTOR'S FIELD CONSTRUCTION SUPERVISOR SHALL HAVE DEMONSTRATED EXPERIENCE AND BE QUALIFIED TO DIRECT ALL WORK AT THE SITE.
25. CONTRACTOR SHALL EXCAVATE TO THE LINES AND GRADES SHOWN ON THE PROJECT GRADING PLANS. CONTRACTOR SHALL TAKE PRECAUTIONS TO MINIMIZE OVER-EXCAVATION. OVER-EXCAVATION SHALL BE FILLED WITH COMPACTED INFILL MATERIAL, OR AS DIRECTED BY THE WALL DESIGN ENGINEER, AT THE CONTRACTOR'S EXPENSE.
26. CONTRACTOR SHALL VERIFY LOCATION OF EXISTING STRUCTURES AND UTILITIES PRIOR TO EXCAVATION. CONTRACTOR SHALL ENSURE ALL SURROUNDING STRUCTURES ARE PROTECTED FROM THE EFFECTS OF WALL EXCAVATION. EXCAVATION SUPPORT, IF REQUIRED, IS THE RESPONSIBILITY OF THE CONTRACTOR.
27. FOLLOWING THE EXCAVATION, THE FOUNDATION SOIL SHALL BE EXAMINED BY THE OWNER'S ENGINEER TO ASSURE ACTUAL FOUNDATION SOIL STRENGTH MEETS OR EXCEEDS THE ASSUMED DESIGN BEARING STRENGTH. SOILS NOT MEETING THE REQUIRED STRENGTH SHALL BE REMOVED AND REPLACED WITH INFILL SOILS, AS DIRECTED BY THE CONTRACTOR'S GEOTECHNICAL ENGINEER.
28. FOUNDATION SOIL SHALL BE PROOF-ROLLED AND COMPACTED TO 95% STANDARD PROCTOR DENSITY AND INSPECTED BY THE CONTRACTOR'S GEOTECHNICAL ENGINEER PRIOR TO PLACEMENT OF LEVELING PAD MATERIALS.
29. LEVELING PAD SHALL BE PLACED AS SHOWN ON THE FINAL, P.E.-SEALED RETAINING WALL PLANS WITH A MINIMUM THICKNESS OF 6 INCHES. THE LEVELING PAD SHOULD EXTEND LATERALLY AT LEAST A DISTANCE OF 6 INCHES FROM THE TOE AND HEEL OF THE LOWERMOST SRW UNIT.
30. GRANULAR LEVELING PAD MATERIAL SHALL BE COMPACTED TO PROVIDE A FIRM, LEVEL BEARING SURFACE ON WHICH TO PLACE THE FIRST COURSE OF UNITS. WELL-GRADED SAND CAN BE USED TO SMOOTH THE TOP 1/4 INCH TO 1/2 INCH OF THE LEVELING PAD. COMPACTION WILL BE WITH MECHANICAL PLATE COMPACTORS TO ACHIEVE 95% OF MAXIMUM STANDARD PROCTOR DENSITY (ASTM D 698).
31. ALL SRW UNITS SHALL BE INSTALLED AT THE PROPER ELEVATION AND ORIENTATION AS SHOWN ON THE FINAL, P.E.-SEALED WALL PLANS AND DETAILS OR AS DIRECTED BY THE WALL DESIGN ENGINEER. THE SRW UNITS SHALL BE INSTALLED IN GENERAL ACCORDANCE WITH THE MANUFACTURER'S RECOMMENDATIONS. THE SPECIFICATIONS AND DRAWINGS SHALL GOVERN IN ANY CONFLICT BETWEEN THE TWO REQUIREMENTS.
32. FIRST COURSE OF SRW UNITS SHALL BE PLACED ON THE LEVELING PAD. THE UNITS SHALL BE LEVELED SIDE-TO-SIDE, FRONT-TO-REAR AND WITH ADJACENT UNITS, AND ALIGNED TO ENSURE INTIMATE CONTACT WITH THE LEVELING PAD. THE FIRST COURSE IS THE MOST IMPORTANT TO ENSURE ACCURATE AND ACCEPTABLE RESULTS. NO GAPS SHALL BE LEFT BETWEEN THE FRONT OF ADJACENT UNITS. ALIGNMENT MAY BE DONE BY MEANS OF A STRING LINE OR OFFSET FROM BASE LINE TO THE BACK OF THE UNITS.
33. ALL EXCESS DEBRIS SHALL BE CLEANED FROM TOP OF UNITS AND THE NEXT COURSE OF UNITS INSTALLED ON TOP OF THE UNITS BELOW.



114TH AND BLUEMOUND
11430 - 11400 BLUEMOUND ROAD
WAUWATOSA, WISCONSIN

SPECIFICATIONS

PRELIMINARY
NOT FOR
CONSTRUCTION

Table with 2 columns: Field Name and Value. SCALE: NTS; PROJECT NO: 21393; DESIGN DATE: ---; PLOT DATE: 1/31/2023; DRAWN BY: ---; CHECKED BY: ---; APPROVED BY: ---; SHEET NO: C501