

E

D

C

B

A

1

2

3

4

5

6

7

EXTERIOR MATERIAL SCHEDULE

FB-1	FACEBRICK (TYPE-1)
FB-2	FACEBRICK (TYPE-2)
FB-3	FACEBRICK (TYPE-3)
MC-1	METAL COPING
MCM-1	METAL COMPOSITE MATERIAL PANEL
GLAZING	
IG-2A	INSULATING GLASS, CLEAR, LOW-E, ANNEALED, 1" THICK
IG-2T	INSULATING GLASS, CLEAR, LOW-E, FULLY TEMPERED, 1" THICK

SHEET NOTES -
EXTERIOR ELEVATIONS

1. PROVIDE CONTINUOUS SEALANT AND BACKER ROD AT ALL PRECAST CONCRETE JOINTS.
2. ALL INSIDE AND OUTSIDE CORNERS OF PRECAST TRIM TO NOT BE MITERED.
3. EXTERIOR SIGNAGE ON BUILDING TO BE COORDINATED AND VERIFIED WITH ARCHITECT, OWNER AND SIGNAGE VENDOR.
4. ALL VERTICAL INSIDE CORNERS TO HAVE 1/2" MOVEMENT JOINT.
5. MJ = INDICATES MOVEMENT JOINT - 1/2" GAP.
6. PJ = INDICATES METAL PANEL JOINT - 1/2" GAP.

KEYNOTES PER SHEET



milwaukee | madison | green bay | denver | atlanta

E

PROJECT INFORMATION

RESEARCH DRIVE
RETAIL BUILDING

10701 Research Drive
Wauwatosa, WI 53226

ISSUANCE AND REVISIONS

DATE	DESCRIPTION
4/29/2022	SCHEMATIC DESIGN
01/12/2023	SCHEMATIC DESIGN REVISION

C

KEY PLAN

B

SHEET INFORMATION

**PROGRESS DOCUMENTS
NOT FOR CONSTRUCTION**
These documents reflect progress and intent and may be subject to change, including additional detail. These are not final construction documents and shall not be used for final bidding or construction-related purposes.

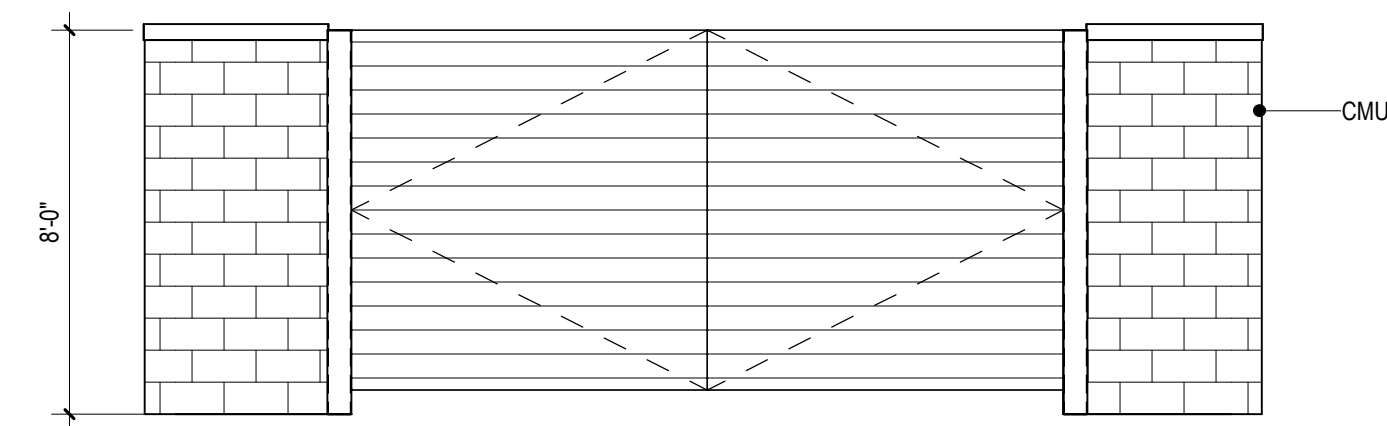
PROJECT MANAGER PM
PROJECT NUMBER 721110-05

EXTERIOR
ELEVATIONS

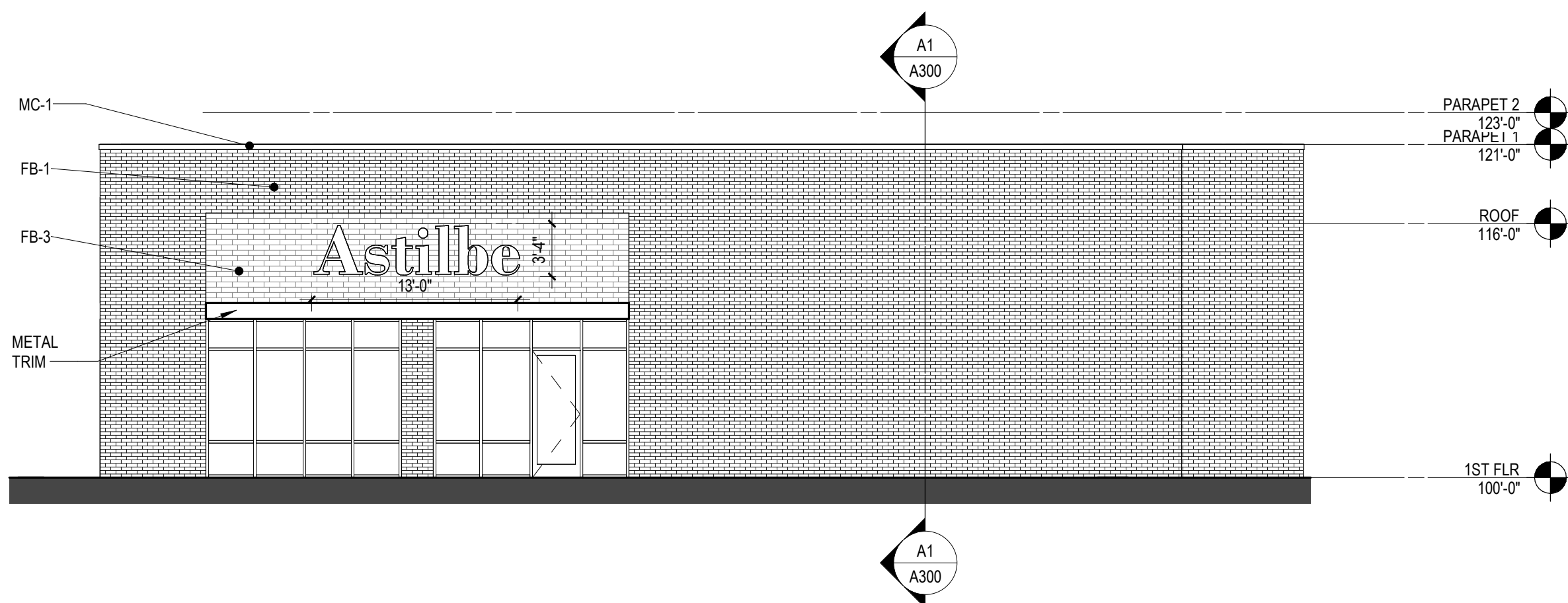
A200

© 2022 Epstein Uhen Architects, Inc.

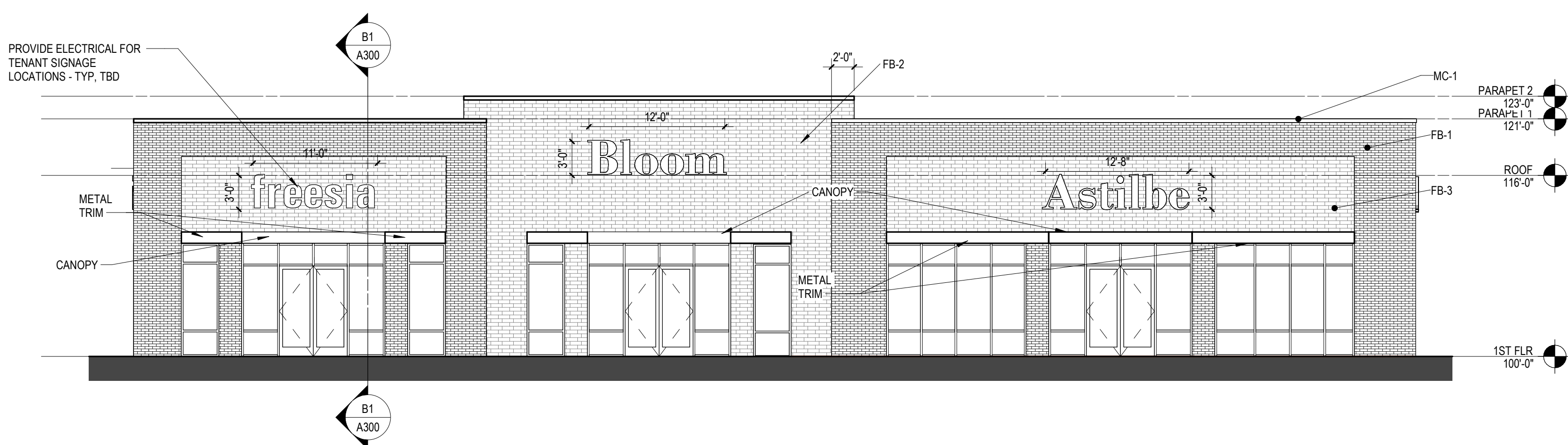
D1 TRASH ENCLOSURE ELEVATION
1/4" = 1'-0"



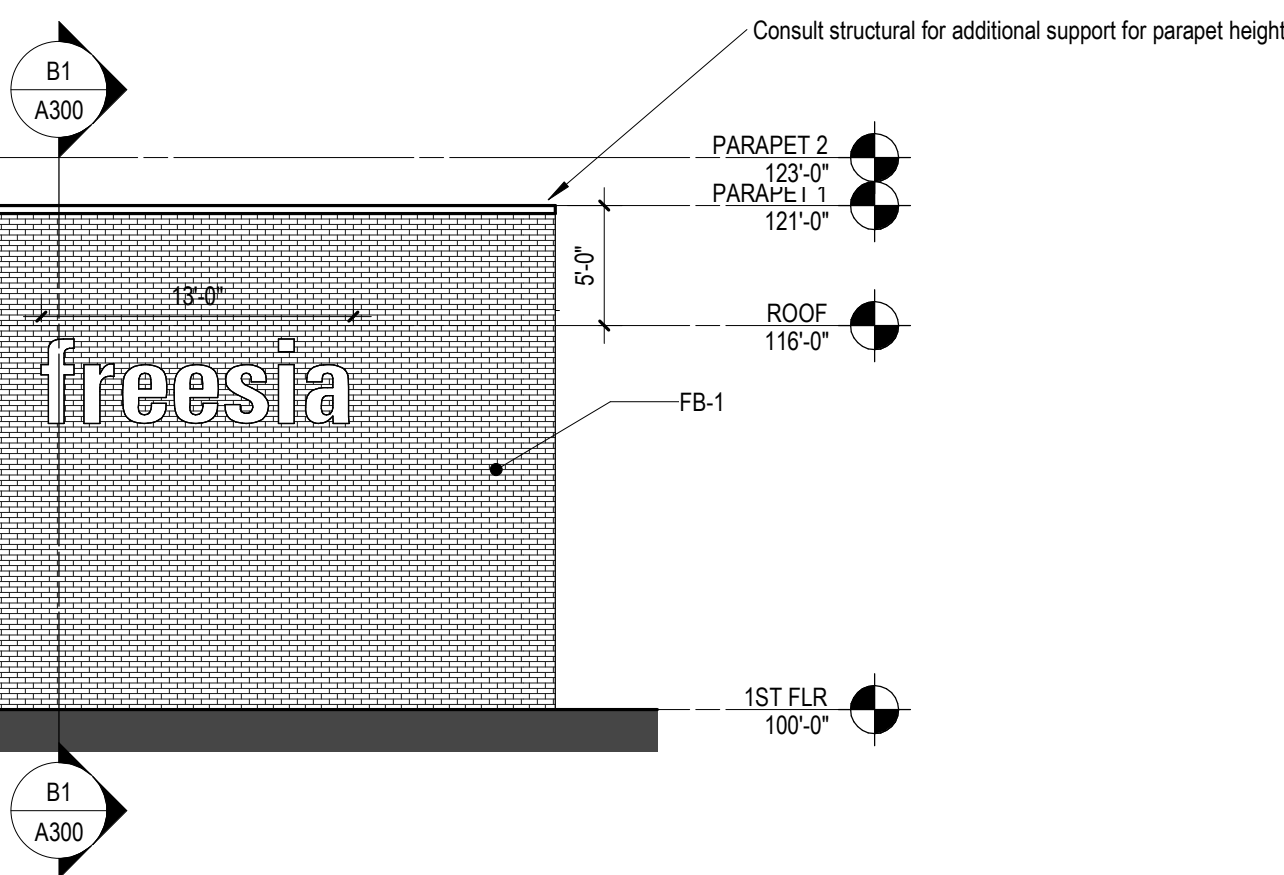
C1 WEST
1/8" = 1'-0"



B1 NORTH
1/8" = 1'-0"



A1 EAST
1/8" = 1'-0"



B4 SOUTH
1/8" = 1'-0"