

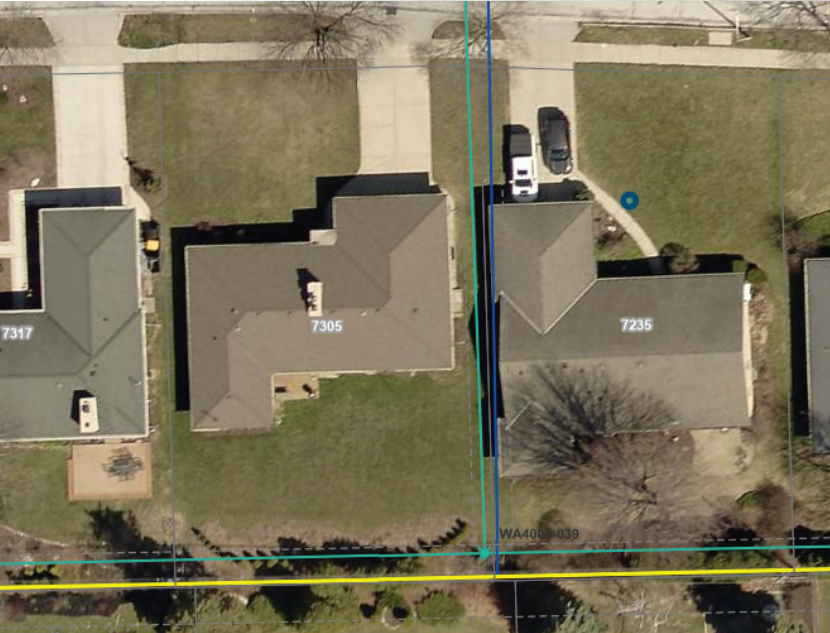
# 7305 W Wells St.

## J. Ross McIntyre

\*site measurements all conducted by homeowner, with the exception of the approximate utility depths



### REFERENCE IMAGE FROM WAUWATOSA ENGINEERING DEPARTMENT



Approximate property lines based on overhead maps and discussion with USIC

UTILITY POLE

I am assuming that utility pole falls inside my property line. This is what I saw in the USIC map with the marker on site

Google

I am assuming that water line is my property line. This is what I saw in the USIC map with the marker on site

W Wells St.

SEWER

WATER

W Wells St

W Wells St

46'-1"

~9.25 ft deep

~6 ft deep

60'-6"

59'-3"

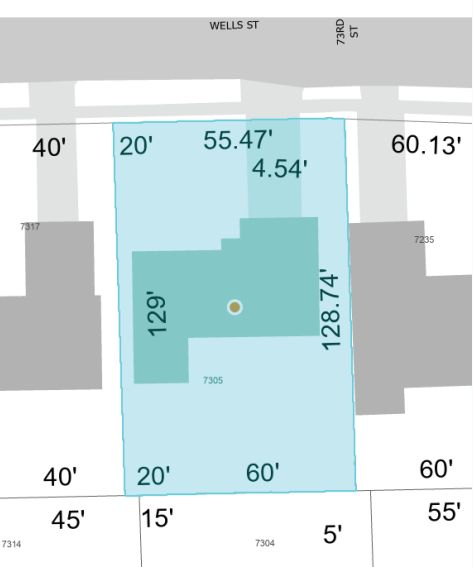
15'-7"  
to neighboring structure

7305

16'-1"  
to neighboring structure

I am assuming that the shut off falls on my property. This is what I saw in the USIC map with the marker on site

1'-6"  
distance from  
assumed property line  
to assumed sewer line



SEWER ~11 ft deep

WATER ~6-8 ft deep

distance between marked lines vary from 5' to 7'