

CLIENT:

MILWAUKEE REGIONAL  
**MEDICAL CENTER**

WEST CAMPUS DEVELOPMENT  
INFRASTRUCTURE IMPROVEMENTS

PROJECT TITLE:

PHASE 2A - ROADWAY & UTILITIES

ISSUE:

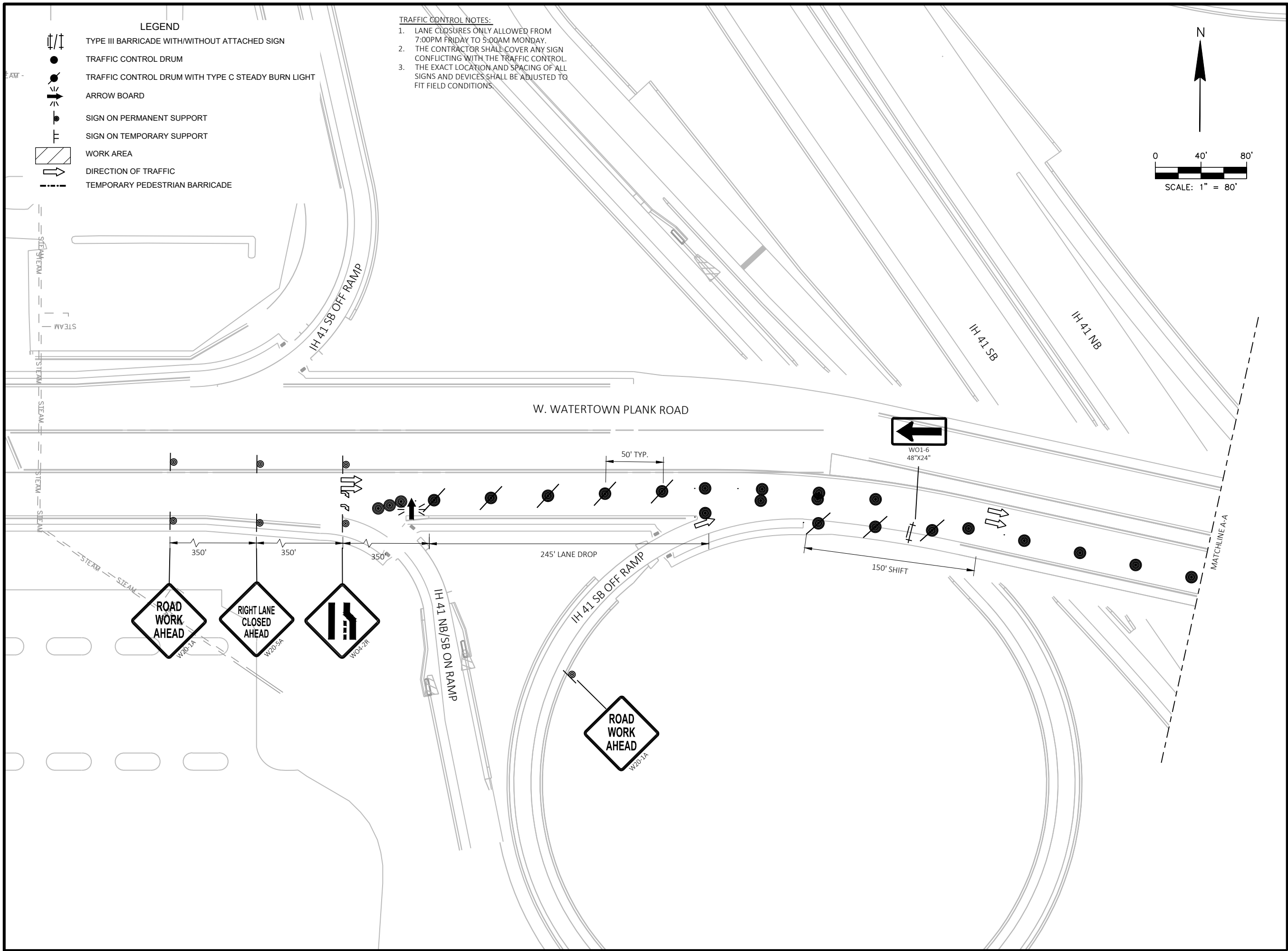
PROJECT INFORMATION:

PROJECT NUMBER: 2024-1100-04  
DATE: SEPTEMBER 19, 2025  
DRAWN BY: MRD  
CHECKED BY: BMM  
APPROVED BY: ACO  
SCALE: 1 IN:80 FT

SHEET TITLE:

TRAFFIC CONTROL -  
N. 95TH STREET

SHEET NUMBER:



CLIENT:

MILWAUKEE REGIONAL  
**MEDICAL CENTER**

WEST CAMPUS DEVELOPMENT  
INFRASTRUCTURE IMPROVEMENTS

PROJECT TITLE:

PHASE 2A - ROADWAY & UTILITIES

ISSUE:

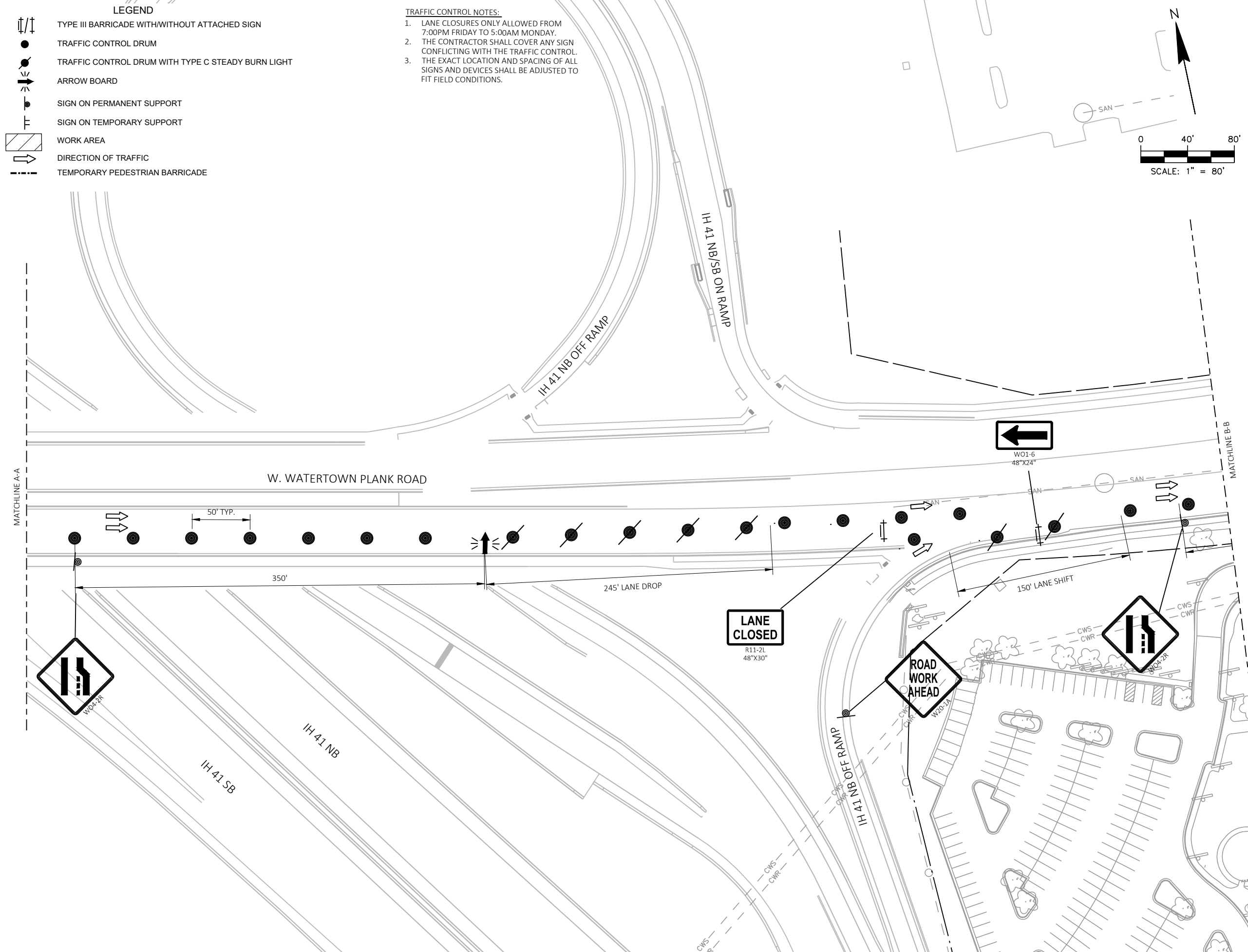
PROJECT INFORMATION:

PROJECT NUMBER: 2024-1100-04  
DATE: SEPTEMBER 19, 2025  
DRAWN BY: MRD  
CHECKED BY: BMM  
APPROVED BY: ACO  
SCALE: 1 IN:80 FT

SHEET TITLE:

TRAFFIC CONTROL -  
N. 95TH STREET

SHEET NUMBER:



**LEGEND**

- TYPE III BARRICADE WITH/WITHOUT ATTACHED SIGN
- TRAFFIC CONTROL DRUM
- TRAFFIC CONTROL DRUM WITH TYPE C STEADY BURN LIGHT
- ARROW BOARD
- SIGN ON PERMANENT SUPPORT
- SIGN ON TEMPORARY SUPPORT
- WORK AREA
- DIRECTION OF TRAFFIC
- TEMPORARY PEDESTRIAN BARRICADE

**TRAFFIC CONTROL NOTES:**

1. LANE CLOSURES ONLY ALLOWED FROM 7:00PM FRIDAY TO 5:00AM MONDAY.
2. THE CONTRACTOR SHALL COVER ANY SIGN CONFLICTING WITH THE TRAFFIC CONTROL.
3. THE EXACT LOCATION AND SPACING OF ALL SIGNS AND DEVICES SHALL BE ADJUSTED TO FIT FIELD CONDITIONS.

CLIENT:

MILWAUKEE REGIONAL  
**MEDICAL CENTER**

WEST CAMPUS DEVELOPMENT  
 INFRASTRUCTURE IMPROVEMENTS

PROJECT TITLE:

PHASE 2A - ROADWAY & UTILITIES

ISSUE:

PROJECT INFORMATION:








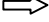

PROJECT NUMBER: 2024-1100-04  
 DATE: SEPTEMBER 19, 2025  
 DRAWN BY: MRD  
 CHECKED BY: BMM  
 APPROVED BY: ACO  
 SCALE: 1 IN:80 FT

SHEET TITLE:

TRAFFIC CONTROL -  
 N. 95TH STREET

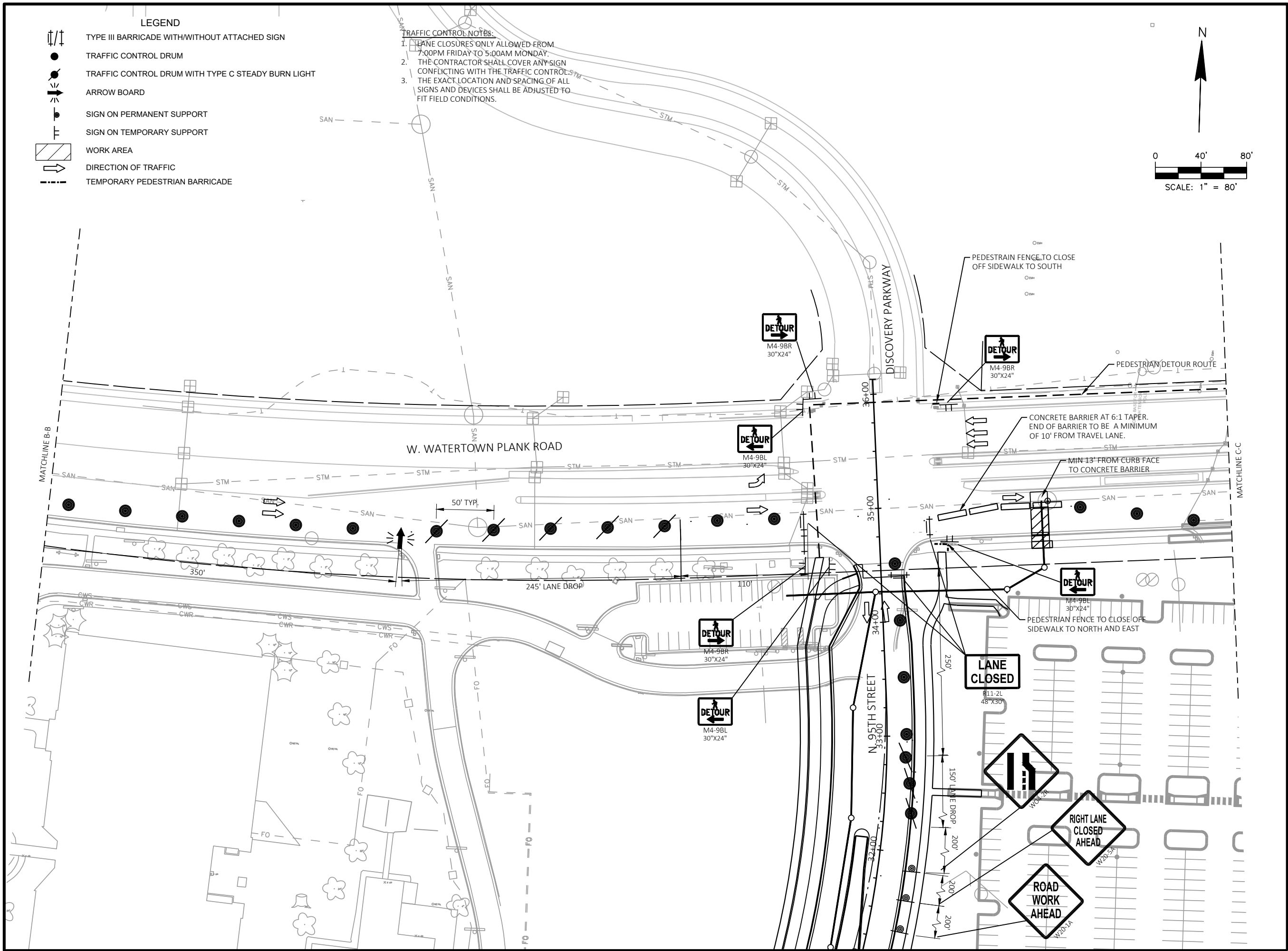
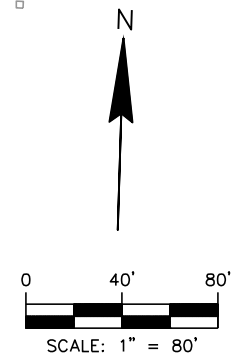
SHEET NUMBER:

**LEGEND**

-  TYPE III BARRICADE WITH/WITHOUT ATTACHED SIGN
-  TRAFFIC CONTROL DRUM
-  TRAFFIC CONTROL DRUM WITH TYPE C STEADY BURN LIGHT
-  ARROW BOARD
-  SIGN ON PERMANENT SUPPORT
-  SIGN ON TEMPORARY SUPPORT
-  WORK AREA
-  DIRECTION OF TRAFFIC
-  TEMPORARY PEDESTRIAN BARRICADE

**TRAFFIC CONTROL NOTES:**

1. LANE CLOSURES ONLY ALLOWED FROM 7:00PM FRIDAY TO 5:00AM MONDAY.
2. THE CONTRACTOR SHALL COVER ANY SIGN CONFLICTING WITH THE TRAFFIC CONTROL.
3. THE EXACT LOCATION AND SPACING OF ALL SIGNS AND DEVICES SHALL BE ADJUSTED TO FIT FIELD CONDITIONS.



October 1, 2025  
 11:42 AM  
 X:\ML\2024\20241100-04\DESIGN\TRANSPORTATION\SHEETS\PLAN\026101\_S1.DWG

CLIENT:

MILWAUKEE REGIONAL  
**MEDICAL CENTER**

WEST CAMPUS DEVELOPMENT  
INFRASTRUCTURE IMPROVEMENTS

PROJECT TITLE:

PHASE 2A - ROADWAY & UTILITIES

ISSUE:

PROJECT INFORMATION:

PROJECT NUMBER: 2024-1100-04  
DATE: SEPTEMBER 19, 2025  
DRAWN BY: MRD  
CHECKED BY: BMM  
APPROVED BY: ACO  
SCALE: 1 IN:80 FT

SHEET TITLE:

TRAFFIC CONTROL -  
N. 95TH STREET

SHEET NUMBER:

**TRAFFIC CONTROL NOTES:**

1. LANE CLOSURES ONLY ALLOWED FROM 7:00PM FRIDAY TO 5:00AM MONDAY.
2. THE CONTRACTOR SHALL COVER ANY SIGN CONFLICTING WITH THE TRAFFIC CONTROL.
3. THE EXACT LOCATION AND SPACING OF ALL SIGNS AND DEVICES SHALL BE ADJUSTED TO FIT FIELD CONDITIONS.

- LEGEND**
- TYPE III BARRICADE WITH/WITHOUT ATTACHED SIGN
  - TRAFFIC CONTROL DRUM
  - TRAFFIC CONTROL DRUM WITH TYPE C STEADY BURN LIGHT
  - ARROW BOARD
  - SIGN ON PERMANENT SUPPORT
  - SIGN ON TEMPORARY SUPPORT
  - WORK AREA
  - DIRECTION OF TRAFFIC
  - TEMPORARY PEDESTRIAN BARRICADE

