



Wauwatosa, WI

Transportation Affairs Committee

Meeting Agenda - Final

7725 W. North Avenue
Wauwatosa, WI 53213

Tuesday, June 17, 2025

6:00 PM

Committee Room #1 and Zoom:
<https://servetosa.zoom.us/j/81144274572>,
Meeting ID: 811 4427 4572

Regular Meeting

HYBRID MEETING INFORMATION

Members of the public may observe and participate in the meeting in-person or via Zoom at the link above. To access the Zoom meeting via phone, call 1-312-626-6799 and enter the Meeting ID.

CALL TO ORDER

ROLL CALL

UNFINISHED BUSINESS

1. Consideration of request from Engineering Division for no parking on the south side of Portland Avenue from 114' west of Glenview Avenue to 140-feet west of Glenview Avenue, on the north side of Gridley Avenue from 192' west of Glenview Avenue to 236-feet west of Glenview Avenue, and on the east side of Kavanaugh Place from 148-feet north of Gridley Avenue to 171-feet north of Gridley Avenue following the completion of a 90-day trial

[25-0215](#)

Recommendation: Place on file. Replaced with Files 25-0981, 25-0994, and 25-0997

TRANSPORTATION AFFAIRS COMMITTEE ITEMS

1. Consideration of request from Engineering Division to prohibit parking on the north side of Gridley Avenue from 179-feet west of Glenview Avenue to 248-feet west of Glenview Avenue following completion of a 90-day trial and on the south side of Gridley Avenue from 161-feet west of Glenview Avenue to 249-feet west of Glenview Avenue
2. Consideration of request from Engineering Division to prohibit parking on the east side of Kavanaugh Place from 148-feet north of Gridley Avenue to 166-feet north of Gridley Avenue following completion of a 90-day trial

[25-0981](#)

[25-0994](#)

3. Consideration of request from Engineering Division to prohibit parking from 7:00am until 3:00pm except Saturday, Sunday, and Holidays on the south side of Portland Avenue from 114-feet west of Glenview Avenue to 160-feet west of Glenview Avenue and to prohibit parking anytime on the north side of Portland Avenue from 100-feet west of Glenview Avenue to 159-feet west of Glenview Avenue following the completion of a 90-day trial [25-0997](#)
4. Consideration of request from Engineering Division to remove parking restrictions on the east side of 72nd Street from Milwaukee Avenue to Hillcrest Drive upon completion of 90-day parking trials [25-0978](#)
5. Consideration of request from Engineering Division for a 90-day trial of parking prohibitions on the south side of Hillcrest Drive from 68th Street to Washington Circle [25-0979](#)
6. Consideration of request from Engineering Division for a 90-day trial of parking prohibitions on the west side of 84th Street in front of 2357 N 84th Street, on the east side of 84th Street in front of 2336 N 84th Street, and on the west side of 84th Street in front of the north 17 feet of 2321 N 84th Street [25-0980](#)
7. Consideration of request from Engineering Division for a 90-day trial of parking prohibitions on the north side of Gilbert Avenue from 116th Street to 113th Street [25-0990](#)

ADJOURNMENT

NOTICE TO PERSONS WITH A DISABILITY

Persons with a disability who need assistance to participate in this meeting should call the City Clerk's office at (414) 479-8917 or send an email to tclerk@wauwatosa.net, with as much advance notice as possible.



Wauwatosa, WI

7725 W. North Avenue
Wauwatosa, WI 53213

Staff Report

File #: 25-0215

Agenda Date: 6/17/2025

Agenda #: 1.

Consideration of request from Engineering Division for no parking on the south side of Portland Avenue from 114' west of Glenview Avenue to 140-feet west of Glenview Avenue, on the north side of Gridley Avenue from 192' west of Glenview Avenue to 236-feet west of Glenview Avenue, and on the east side of Kavanaugh Place from 148-feet north of Gridley Avenue to 171-feet north of Gridley Avenue following the completion of a 90-day trial

Submitted by:

Michael May, PE, PTOE, RSP1

Department:

Department of Public Works - Engineering Division

A. Issue

Public Works crews are having difficulty navigating certain alley intersections.

B. Background/Options

This item is before the Transportation Affairs Committee following the completion on a 90-day trial. The street abutting 8121 W. Portland currently has 2-hour parking from 9:00AM to 4:00 PM except Saturdays, Sundays, and holidays. The street abutting 8124 and 8130 W. Gridley Avenue also currently has 2-hour parking from 9:00AM to 4:00 PM except Saturdays, Sundays, and holidays. There are no restrictions on parking at 1122 N. Kavanaugh Place. Public Works crews are having difficulty navigating alley intersections at these addresses when vehicles are parked across from the alleys.

Following discussion with DPW, staff recommends no parking on the south side of Portland Avenue from 114' west of Glenview Avenue to 140-feet west of Glenview Avenue, on the north side of Gridley Avenue from 192' west of Glenview Avenue to 236-feet west of Glenview Avenue, and on the east side of Kavanaugh Place from 148-feet north of Gridley Avenue to 171-feet north of Gridley Avenue. These limits match the 90-day trial.

C. Strategic Plan (Area of Focus)

NA

D. Fiscal Impact

Minor expenses for the installation of signs. The existing sign budget will accommodate these expenses.

E. Recommendation

Direct staff to prepare an ordinance for no parking on the south side of Portland Avenue from 114' west of Glenview Avenue to 140-feet west of Glenview Avenue, on the north side of Gridley Avenue from 192' west of Glenview Avenue to 236-feet west of Glenview Avenue, and on the east side of Kavanaugh Place from 148-feet north of Gridley Avenue to 171-feet north of Gridley Avenue.

Location of Proposed Parking Prohibition



8121 W. Portland Avenue

***Location of Proposed Parking Prohibition
8124 and 8130 W. Gridley Avenue***



Location of Proposed Parking Prohibition

1122 N. Kavanaugh Place



Recommendation: Place on file. Replaced with Files 25-0981, 25-0994, and 25-0997



Staff Report

File #: 25-0981

Agenda Date: 6/17/2025

Agenda #: 1.

Consideration of request from Engineering Division to prohibit parking on the north side of Gridley Avenue from 179-foot west of Glenview Avenue to 248-foot west of Glenview Avenue following completion of a 90-day trial and on the south side of Gridley Avenue from 161-foot west of Glenview Avenue to 249-foot west of Glenview Avenue

Submitted by:

Michael May, PE, PTOE, RSP1

Department:

DPW-Engineering Division

A. Issue

Public Works crews are having difficulty navigating certain alley intersections

B. Background/Options

The street abutting 8124 W Gridley and 8130 W Gridley (north side) currently has 2-hour parking from 9:00AM to 4:00 PM except Saturdays, Sundays, and holidays. A 90-day trial included no parking anytime from 192-foot to 236-foot west of Glenview Avenue. Staff is now recommending to instead prohibit parking anytime from 179-foot to 248-foot west of Glenview Avenue.

The south side of Gridley Avenue did not undergo a 90-day trial. However, after reviewing field operations with a DPW refuse vehicle, staff is recommending to prohibit parking anytime from 161-foot west of Portland Avenue to 249-foot west of Portland Avenue, which is a little more than one vehicle parking length on either side of the alley.

C. Strategic Plan (Area of Focus)

NA

D. Fiscal Impact

Minor expenses for the installation of signs. The existing sign budget will accommodate these expenses.

E. Recommendation

Direct staff to prepare an ordinance to prohibit parking on the north side of Gridley Avenue from 179-foot west of Glenview Avenue to 248-foot west of Glenview Avenue and on the south side of Gridley Avenue from 161-foot west of Glenview Avenue to 249-foot west of Glenview Avenue.

Approximate Location of Proposed Parking Prohibitions





Staff Report

File #: 25-0994

Agenda Date: 6/17/2025

Agenda #: 2.

Consideration of request from Engineering Division to prohibit parking on the east side of Kavanaugh Place from 148-feet north of Gridley Avenue to 166-feet north of Gridley Avenue following completion of a 90-day trial

Submitted by:

Michael May, PE, PTOE, RSP1

Department:

DPW-Engineering

A. Issue

Public Works crews are having difficulty navigating certain alley intersections

B. Background/Options

This item is before the Transportation Affairs Committee following the completion on a 90-day trial. There are no restrictions on parking at 1122 N. Kavanaugh Place. Public Works crews are having difficulty navigating alley intersections at this address when vehicles are parked across from the alley.

The 90-day trial included no parking on the east side of Kavanaugh Place from 148-feet north of Gridley Avenue to 171-feet north of Gridley Avenue. Based on discussions with the property owner and with Public Works, the no parking area can be reduced to allow for one parking spot in front of 1121. The staff recommendation below reflects this change.

C. Strategic Plan (Area of Focus)

NA

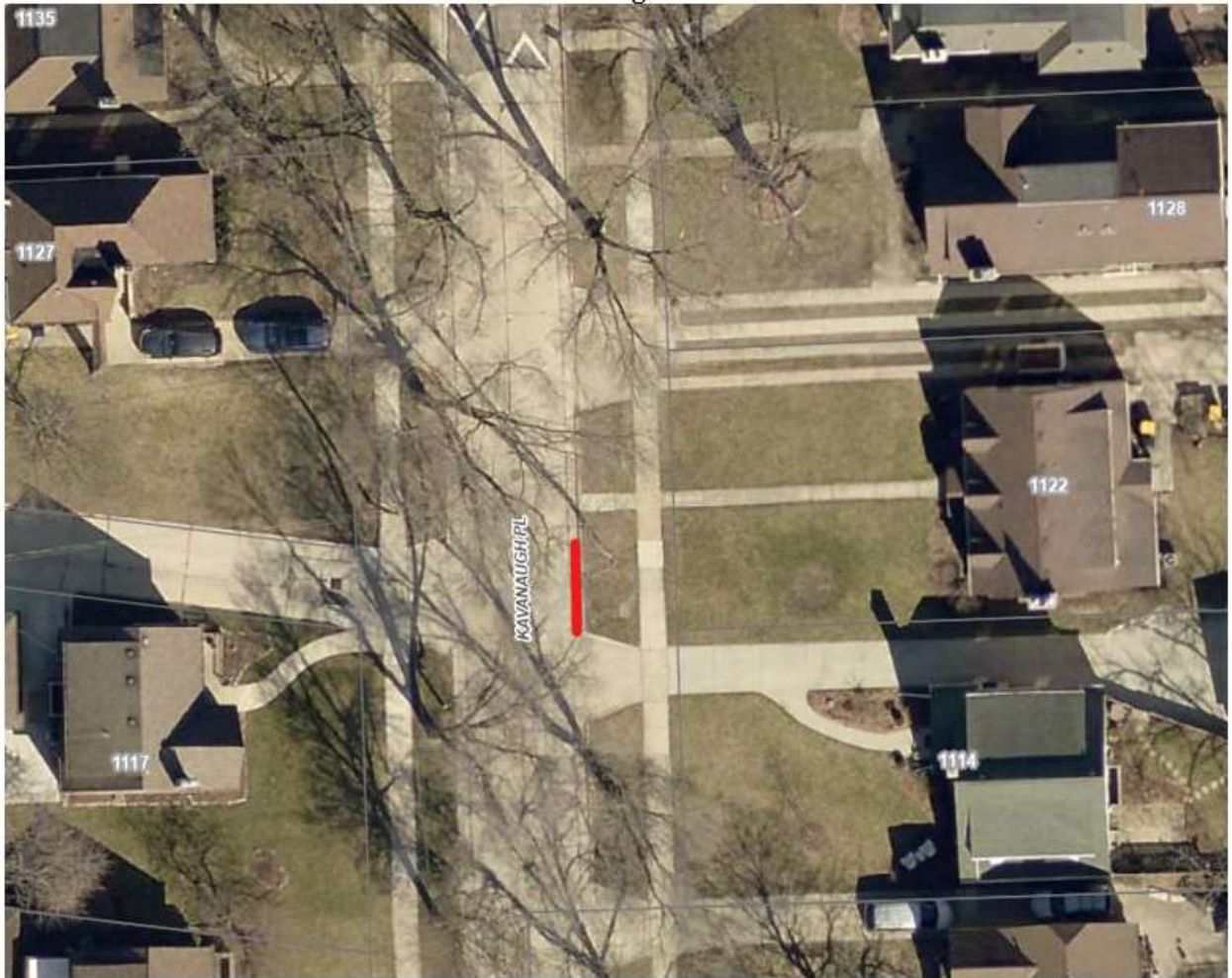
D. Fiscal Impact

Minor expenses for installation of signs.

E. Recommendation

Direct staff to prepare an ordinance to prohibit parking on the east side of Kavanaugh Place from 148-feet north of Gridley Avenue to 166-feet north of Gridley Avenue following completion of a 90-day trial.

**Approximate Location of Proposed Parking Prohibition
1122 Kavanaugh Place**





Wauwatosa, WI

7725 W. North Avenue
Wauwatosa, WI 53213

Staff Report

File #: 25-0997

Agenda Date: 6/17/2025

Agenda #: 3.

Consideration of request from Engineering Division to prohibit parking from 7:00am until 3:00pm except Saturday, Sunday, and Holidays on the south side of Portland Avenue from 114-feet west of Glenview Avenue to 160-feet west of Glenview Avenue and to prohibit parking anytime on the north side of Portland Avenue from 100-feet west of Glenview Avenue to 159-feet west of Glenview Avenue following the completion of a 90-day trial

Submitted by:

Michael May, PE, PTOE, RSP1

Department:

DPW-Engineering Division

A. Issue

Public Works crews are having difficulty navigating certain alley intersections

B. Background/Options

The street abutting 8121 W. Portland (south side) currently has 2-hour parking from 9:00AM to 4:00 PM except Saturdays, Sundays, and holidays. A 90-day trial included no parking anytime at this location. Staff is now recommending to instead prohibit parking from 7:00am until 3:00pm at this location.

The north side of Portland Avenue did not undergo a 90-day trial. However, after reviewing field operations with a DPW refuse vehicle, staff is recommending to prohibit parking anytime from 100-feet west of Portland Avenue to 159-feet west of Portland Avenue, or approximately one vehicle parking length on either side of the alley.

C. Strategic Plan (Area of Focus)

NA

D. Fiscal Impact

Minor expenses for the installation of signs. The existing sign budget will accommodate these expenses.

E. Recommendation

Direct staff to prepare an ordinance to prohibit parking from 7:00am until 3:00pm except Saturday, Sunday, and Holidays on the south side of Portland Avenue from 114-feet west of Glenview Avenue to 160-feet west of Glenview Avenue and to prohibit parking anytime on the north side of Portland Avenue from 100-feet west of Glenview Avenue to 159-feet west of Glenview Avenue.

Approximate Location of Proposed Parking Prohibitions





Staff Report

File #: 25-0978

Agenda Date: 6/17/2025

Agenda #: 4.

Consideration of request from Engineering Division to remove parking restrictions on the east side of 72nd Street from Milwaukee Avenue to Hillcrest Drive upon completion of 90-day parking trials

Submitted by:

Michael May, PE, PTOE, RSP1

Department:

DPW - Engineering Division

A. Issue

The Wauwatosa School District requested all-day parking along the east side of 72nd Street.

B. Background/Options

Parking is currently restricted on the west side of 72nd Street on school days from 8AM to 6PM from Milwaukee Avenue to Hillcrest Drive. Parking is restricted on the east side of 72nd Street to 3-hours from 9AM to 6PM except weekends and holidays from Milwaukee Avenue to Hillcrest Drive.

A parking study was performed in the area of Wauwatosa East High School in Year 2020 prior to pandemic-related shutdowns. The study included street parking counts, participation with focus groups, and parking trials. The study recommended a parking changes in the neighborhood surrounding the high school - including the removal of parking restrictions on the east side of 72nd Street. Ultimately, 3-hour parking from 9AM to 6PM except weekends and holidays was adopted on the east side of 72nd Street from Milwaukee Avenue to Hillcrest Drive.

The Wauwatosa School District requested all-day parking along the east side of 72nd Street as was originally recommended in the parking study. A 90-day trial was approved at the July 23, 2024 Transportation Affairs Committee (TAC) meeting. The 90-day trial started on August 8th and the 90-days expired on November 5th. Staff observations were performed randomly during school hours. No vehicles were parked on the west side of the street during the observations. The east side of the street had between one and five vehicles parked at any time, with three or fewer vehicles parked during 85% of the visits.

The parking trial was extended until the end of the 2024-2025 school year by TAC at its November 12th meeting. Observations continue to show between one and five vehicles parked at any time, with three or fewer vehicles parked during 85% of the visits.

Staff recommends permanently removing parking restrictions along the east side of 72nd Street from Milwaukee Avenue to Hillcrest Drive.

C. Strategic Plan (Area of Focus)

NA

D. Fiscal Impact

None.

E. Recommendation

Direct staff to prepare an ordinance to remove parking restrictions along the east side of 72nd Street from Milwaukee Avenue to Hillcrest Drive.

*Location of Proposed Removal of Parking Restrictions
72nd Street, Milwaukee Avenue to Hillcrest Drive*





Staff Report

File #: 25-0979

Agenda Date: 6/17/2025

Agenda #: 5.

Consideration of request from Engineering Division for a 90-day trial of parking prohibitions on the south side of Hillcrest Drive from 68th Street to Washington Circle

Submitted by:

Elizabeth Saunderson, PE

Department:

DPW - Engineering Division

A. Issue

On-street parking impacts travel and access along Hillcrest Drive

B. Background/Options

No signed parking restrictions exist along Hillcrest Drive from 68th Street to Washington Circle. Residents have requested that parking be prohibited on one side of Hillcrest Drive.

Hillcrest Drive is 22 feet wide curb-to-curb. If vehicles are parked on both sides of the street, the resulting travel way would be narrowed to 6-8 feet in width for two-way traffic. A 6- to 8-foot width is not sufficient for emergency vehicle access, especially on a curvilinear street.

Staff recommends initiating a 90-day trial for parking prohibitions along the south side of Hillcrest Drive from 68th Street to Washington Circle. The south side is recommended over the north side because fewer residential properties would lose access to adjacent on-street parking. Many of the properties on the south side of Hillcrest Drive are adjacent to on-street parking along Mountain Avenue, Alta Vista Avenue or Washington Circle that would not be affected by this parking prohibition trial. A map showing the proposed trial of parking prohibitions along Hillcrest Drive is attached.

C. Strategic Plan (Area of Focus)

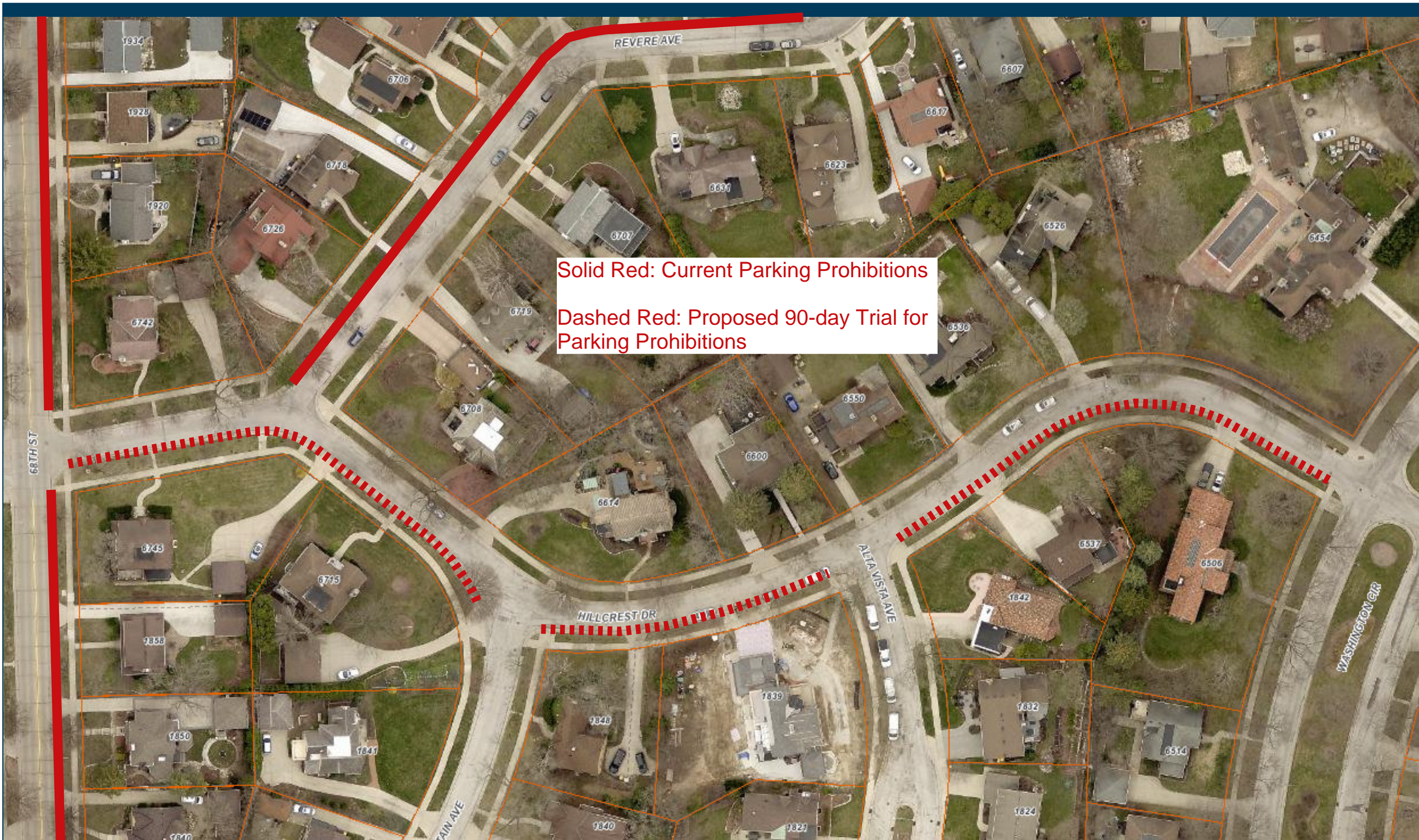
N/A

D. Fiscal Impact

Minor expenses for the installation of signs. The existing sign budget will accommodate these expenses.

E. Recommendation

Direct staff to initiate a 90-day trial of parking prohibitions on the south side of Hillcrest Drive from 68th Street to Washington Circle.



Solid Red: Current Parking Prohibitions
Dashed Red: Proposed 90-day Trial for Parking Prohibitions

Hillcrest Dr, 68th St to Washington Circle



Wauwatosa, WI

7725 W. North Avenue
Wauwatosa, WI 53213

Staff Report

File #: 25-0980

Agenda Date: 6/17/2025

Agenda #: 6.

Consideration of request from Engineering Division for a 90-day trial of parking prohibitions on the west side of 84th Street in front of 2357 N 84th Street, on the east side of 84th Street in front of 2336 N 84th Street, and on the west side of 84th Street in front of the north 17 feet of 2321 N 84th Street

Submitted by:

Elizabeth Saunderson, PE

Department:

DPW - Engineering Division

A. Issue

On-street parking impacts travel and access along 84th Street

B. Background/Options

Signed parking restrictions exist along the west side of 84th Street from North Avenue to 53 feet north of North Avenue. No other signed parking restrictions exist along 84th Street between North Avenue and Meinecke Avenue.

84th Street is 30 feet wide curb-to-curb. When vehicles are parked on both sides of the street, the street is effectively narrowed to a 14-foot wide travel lane for two-way traffic.

Engineering staff recommends initiating a 90-day trial for parking prohibitions at three locations along 84th Street: on the west side of 84th Street in front of 2357 N 84th Street; on the east side of 84th Street in front of 2336 N 84th Street; and on the west side of 84th Street in front of the north 17 feet of 2321 N 84th Street. These three locations are spaced approximately 150 feet apart and will provide locations for vehicles in opposing directions to pass one another and for vehicles to make turning maneuvers. A map showing the proposed locations for a trial of parking prohibitions along 84th Street is attached.

C. Strategic Plan (Area of Focus)

N/A

D. Fiscal Impact

Minor expenses for the installations of signs. The existing sign budget will accommodate these expenses.

E. Recommendation

Direct staff to initiate a 90-day trial of parking prohibitions on the west side of 84th Street in front of 2357 N 84th Street; on the east side of 84th Street in front of 2336 N 84th Street; and on the west side of 84th Street in front of the north 17 feet of 2321 N 84th Street



Solid Red: Current Parking Prohibitions
Solid Blue: Current Two-hour Parking (9 am - 6 pm, Mon-Sat)
Solid Purple: Current One-hour Parking (noon - 9 pm)
Dashed Red: Proposed 90-day Trial for Parking Prohibitions

84th St, North Ave to Meinecke Ave

City of **Wauwatosa**





Wauwatosa, WI

7725 W. North Avenue
Wauwatosa, WI 53213

Staff Report

File #: 25-0990

Agenda Date: 6/17/2025

Agenda #: 7.

Consideration of request from Engineering Division for a 90-day trial of parking prohibitions on the north side of Gilbert Avenue from 116th Street to 113th Street

Submitted by:

Elizabeth Saunderson, PE

Department:

DPW - Engineering Division

A. Issue

On-street parking impacts travel and access along Gilbert Avenue

B. Background/Options

No signed parking restrictions exist along either side of Gilbert Avenue from 116th Street to 113th Street. With the recent opening and popularity of Firefly Grove Park, the Wauwatosa Fire Department has requested a parking prohibition on the north side of Gilbert Avenue from 116th Street to 113th Street to accommodate emergency services.

Engineering staff recommends initiating a 90-day trial for parking prohibitions along the north side of Gilbert Avenue from 116th Street to 113th Street (see attached map). Parking prohibitions are recommended on the north side over the south side due to there being fewer north-side on-street parking spaces that would be eliminated and to allow park visitors to access Firefly Grove Park without crossing Gilbert Avenue. A map showing the proposed trial of parking prohibitions along Gilbert Avenue is attached.

C. Strategic Plan (Area of Focus)

N/A

D. Fiscal Impact

Minor expenses for the installation of signs. The existing sign budget will accommodate these expenses.

E. Recommendation

Direct staff to initiate a 90-day trial of a parking prohibition on the north side of Gilbert Avenue from 116th Street to 113th Street.



Dashed Red: Proposed 90-day Trial for Parking Prohibitions

Gilbert Ave, 113th to 116th