

THESE PLANS AND DESIGNS ARE COPYRIGHT PROTECTED AND MAY NOT BE USED IN WHOLE OR IN PART WITHOUT THE WRITTEN CONSENT OF PINNACLE ENGINEERING GROUP, LLC
 DRAFTED: JJS
 DESIGNED: JJS
 REVIEWED: APM

WEST CENTER STREET

END ROAD WORK
G20-2A
48"X24"

((E))



NORTH MAYFAIR ROAD (S.T.H. 100)

LEGEND

	TYPE III BARRICADE WITH TWO TYPE "A" FLASHING LIGHTS		TRAFFIC FLOW DIRECTION
	TYPE III BARRICADE WITH ATTACHED SIGN & TWO TYPE "A" FLASHING LIGHTS		FLASHING ARROW BOARD
	SIGN ON PERMANENT SUPPORT		WORK ZONE
	TRAFFIC CONTROL DRUM		WZ START/END MARKER
	TRAFFIC CONTROL DRUM WITH TYPE C STEADY BURN LIGHT		SIGN ON TEMPORARY SUPPORT
	TEMPORARY CRASH CUSHION		FENCE
	SAWCUT EXISTING PAVEMENT		

GRAPHICAL SCALE (FEET)

SHEET 8.7

VILLAGE RESUBMITTAL

MATCH LINE

TRAFFIC CONTROL PLAN

- NOTES:**
- 1) THE EXACT NUMBER, LOCATION, & SPACING OF ALL SIGNS & DEVICES SHALL BE ADJUSTED TO FIT FIELD CONDITIONS AS APPROVED BY ENGINEER.
 - 2) TYPE III BARRICADES SHALL HAVE TWO TYPE "A" FLASHING LIGHTS ON EACH BARRICADE & HAVE A WIDTH OF 8 FEET.
 - 3) "WO" SIGNS ARE THE SAME AS "W" SIGNS EXCEPT THE BACKGROUND IS ORANGE.
 - 4) CONTRACTOR TO ADJUST TRAFFIC CONTROL SIGNS/DRUMS/DEVICES IN ACCORDANCE WITH THE WISCONSIN DEPARTMENT OF TRANSPORTATION STANDARD DETAIL DRAWINGS.
 - 5) COVER OR REMOVE CONFLICTING PAVEMENT MARKINGS.
 - 6) ALL SIGNS SHALL BE 48" X 48" UNLESS OTHERWISE NOTED.

PINNACLE ENGINEERING GROUP
 ENGINEERING | NATURAL RESOURCES | SURVEYING
 20725 WATERTOWN ROAD, SUITE 100
 BROOKFIELD, WI 53186
 (262) 754-8888
 CHICAGO | MILWAUKEE | NATIONWIDE

LATITUDE 43
 2825 MAYFAIR RD, WAUWATOSA, WI
 TAXKEY: 299-9986-0001

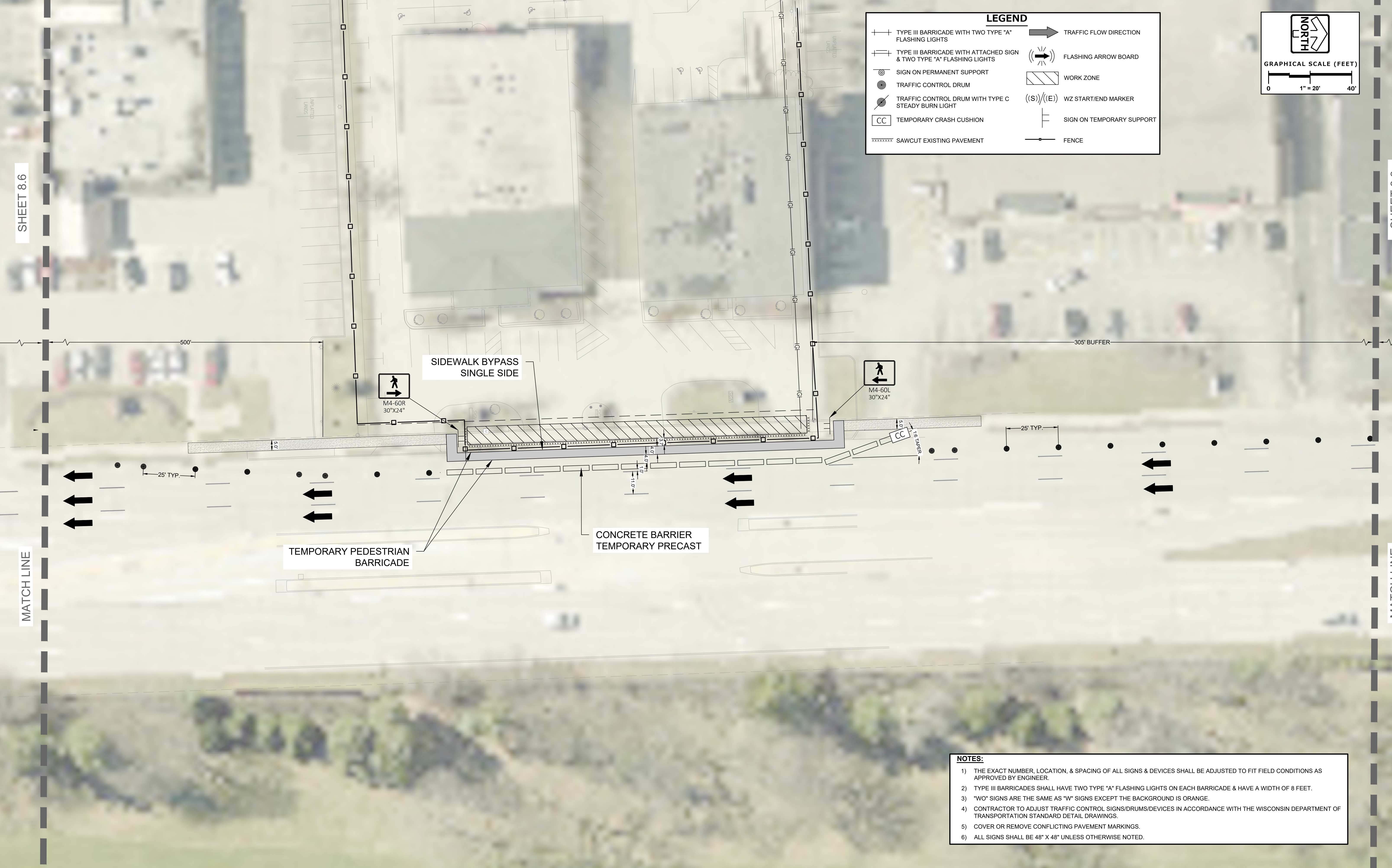
DOT TRAFFIC CONTROL
STAGE 1 & 3

REVISIONS					
1	RAILROAD COMMENTS	01/19/26	5	CLIENT COMMENTS	04/17/26
2	DOT SUBMISSION	02/03/26			
3	CITY RESUBMITTAL	02/25/26			
4	CITY & DOT RESUBMITTAL	04/03/26			

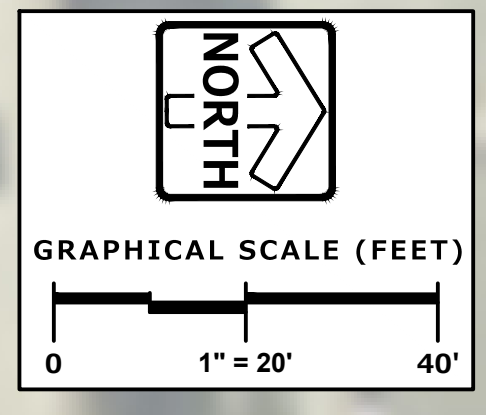
SHEET
C-8.0
 OF
C-8.13

DESIGNED: JIS
 DRAFTED: JIS
 REVIEWED: APM
 THESE PLANS AND DESIGNS ARE COPYRIGHT PROTECTED AND MAY NOT BE USED IN WHOLE OR IN PART WITHOUT THE WRITTEN CONSENT OF PINNACLE ENGINEERING GROUP, LLC

www.pinnacle-engr.com
 VILLAGE RESUBMITTAL
 TRAFFIC CONTROL PLAN



LEGEND			
	TYPE III BARRICADE WITH TWO TYPE "A" FLASHING LIGHTS		TRAFFIC FLOW DIRECTION
	TYPE III BARRICADE WITH ATTACHED SIGN & TWO TYPE "A" FLASHING LIGHTS		FLASHING ARROW BOARD
	SIGN ON PERMANENT SUPPORT		WORK ZONE
	TRAFFIC CONTROL DRUM		WZ START/END MARKER
	TRAFFIC CONTROL DRUM WITH TYPE C STEADY BURN LIGHT		SIGN ON TEMPORARY SUPPORT
	TEMPORARY CRASH CUSHION		FENCE
	SAWCUT EXISTING PAVEMENT		



- NOTES:**
- 1) THE EXACT NUMBER, LOCATION, & SPACING OF ALL SIGNS & DEVICES SHALL BE ADJUSTED TO FIT FIELD CONDITIONS AS APPROVED BY ENGINEER.
 - 2) TYPE III BARRICADES SHALL HAVE TWO TYPE "A" FLASHING LIGHTS ON EACH BARRICADE & HAVE A WIDTH OF 8 FEET.
 - 3) "W" SIGNS ARE THE SAME AS "W" SIGNS EXCEPT THE BACKGROUND IS ORANGE.
 - 4) CONTRACTOR TO ADJUST TRAFFIC CONTROL SIGNS/DRUMS/DEVICES IN ACCORDANCE WITH THE WISCONSIN DEPARTMENT OF TRANSPORTATION STANDARD DETAIL DRAWINGS.
 - 5) COVER OR REMOVE CONFLICTING PAVEMENT MARKINGS.
 - 6) ALL SIGNS SHALL BE 48" X 48" UNLESS OTHERWISE NOTED.

PINNACLE ENGINEERING GROUP
 ENGINEERING | NATURAL RESOURCES | SURVEYING
 PLAN | DESIGN | DELIVER
 www.pinnacle-engr.com
 WISCONSIN OFFICE:
 20725 WATERTOWN ROAD, SUITE 100
 BROOKFIELD, WI 53186
 (262) 754-8888
 CHICAGO | MILWAUKEE | NATIONWIDE

LATITUDE 43
 2825 MAYFAIR RD, WAUWATOSA, WI
 TAXKEY: 299-9986-0001

DOT TRAFFIC CONTROL
STAGE 1 & 3

REVISIONS	
1	RAILROAD COMMENTS 01/19/26
2	DOT SUBMISSION 02/03/26
3	CITY RESUBMITTAL 02/25/26
4	CITY & DOT RESUBMITTAL 04/03/26
5	CLIENT COMMENTS 04/17/26

SHEET
C-8.1
 OF
C-8.13

THESE PLANS AND DESIGNS ARE COPYRIGHT PROTECTED AND MAY NOT BE USED IN WHOLE OR IN PART WITHOUT THE WRITTEN CONSENT OF PINNACLE ENGINEERING GROUP, LLC.
 REVIEWED: APW
 DESIGNED: JJS
 DRAFTED: JJS

www.pinnacle-engr.com
 VILLAGE RESUBMITTAL
 TRAFFIC CONTROL PLAN

SHEET 8.7

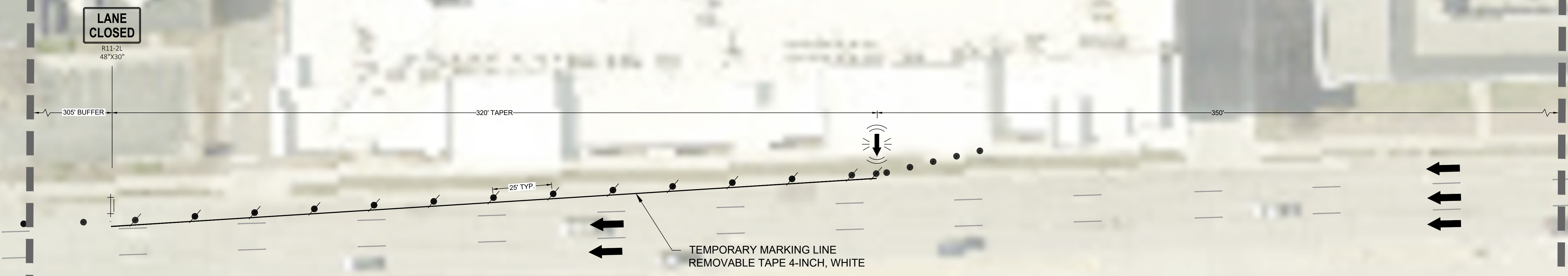
SHEET 8.9

LEGEND

	TYPE III BARRICADE WITH TWO TYPE "A" FLASHING LIGHTS		TRAFFIC FLOW DIRECTION
	TYPE III BARRICADE WITH ATTACHED SIGN & TWO TYPE "A" FLASHING LIGHTS		FLASHING ARROW BOARD
	SIGN ON PERMANENT SUPPORT		WORK ZONE
	TRAFFIC CONTROL DRUM		WZ START/END MARKER
	TRAFFIC CONTROL DRUM WITH TYPE C STEADY BURN LIGHT		SIGN ON TEMPORARY SUPPORT
	TEMPORARY CRASH CUSHION		FENCE
	SAWCUT EXISTING PAVEMENT		

GRAPHICAL SCALE (FEET)

0 1" = 20' 40'



MATCH LINE

MATCH LINE

- NOTES:**
- 1) THE EXACT NUMBER, LOCATION, & SPACING OF ALL SIGNS & DEVICES SHALL BE ADJUSTED TO FIT FIELD CONDITIONS AS APPROVED BY ENGINEER.
 - 2) TYPE III BARRICADES SHALL HAVE TWO TYPE "A" FLASHING LIGHTS ON EACH BARRICADE & HAVE A WIDTH OF 8 FEET.
 - 3) "W" SIGNS ARE THE SAME AS "W" SIGNS EXCEPT THE BACKGROUND IS ORANGE.
 - 4) CONTRACTOR TO ADJUST TRAFFIC CONTROL SIGNS/DRUMS/DEVICES IN ACCORDANCE WITH THE WISCONSIN DEPARTMENT OF TRANSPORTATION STANDARD DETAIL DRAWINGS.
 - 5) COVER OR REMOVE CONFLICTING PAVEMENT MARKINGS.
 - 6) ALL SIGNS SHALL BE 48" X 48" UNLESS OTHERWISE NOTED.

PINNACLE ENGINEERING GROUP
 ENGINEERING | NATURAL RESOURCES | SURVEYING

PLAN | DESIGN | DELIVER
 www.pinnacle-engr.com

WISCONSIN OFFICE:
 20725 WATERTOWN ROAD, SUITE 100
 BROOKFIELD, WI 53186
 (262) 754-8888
 CHICAGO | MILWAUKEE | NATIONWIDE

LATITUDE 43
 2825 MAYFAIR RD, WAUWATOSA, WI
 TAXKEY: 299-9986-0001

**DOT TRAFFIC CONTROL
 STAGE 1 & 3**

REVISIONS	
1 RAILROAD COMMENTS	01/19/26
2 DOT SUBMISSION	02/03/26
3 CITY RESUBMITTAL	02/25/26
4 CITY & DOT RESUBMITTAL	04/03/26
5 CLIENT COMMENTS	04/17/26

REG JOB No. 6675.00
 REG PM APW
 START DATE 01.05.26
 SCALE 1" = 20'

SHEET
C-8.2
 OF
C-8.13

THESE PLANS AND DESIGNS ARE COPYRIGHT PROTECTED AND MAY NOT BE USED IN WHOLE OR IN PART WITHOUT THE WRITTEN CONSENT OF PINNACLE ENGINEERING GROUP, LLC
 DESIGNED: JJS
 DRAFTED: JJS
 REVIEWED: APM

www.pinnacle-engr.com
 VILLAGE RESUBMITTAL
 TRAFFIC CONTROL PLAN

SHEET 8.8

SHEET 8.10

MATCH LINE

MATCH LINE

LEGEND

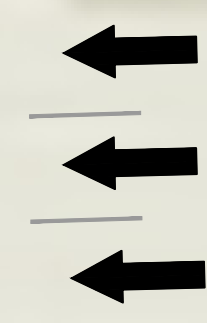
	TYPE III BARRICADE WITH TWO TYPE "A" FLASHING LIGHTS		TRAFFIC FLOW DIRECTION
	TYPE III BARRICADE WITH ATTACHED SIGN & TWO TYPE "A" FLASHING LIGHTS		FLASHING ARROW BOARD
	SIGN ON PERMANENT SUPPORT		WORK ZONE
	TRAFFIC CONTROL DRUM		WZ START/END MARKER
	TRAFFIC CONTROL DRUM WITH TYPE C STEADY BURN LIGHT		SIGN ON TEMPORARY SUPPORT
	TEMPORARY CRASH CUSHION		FENCE
	SAWCUT EXISTING PAVEMENT		

GRAPHICAL SCALE (FEET)



350' ————— 350'

350'



NORTH MAYFAIR ROAD (S.T.H. 100)

NOTES:

- 1) THE EXACT NUMBER, LOCATION, & SPACING OF ALL SIGNS & DEVICES SHALL BE ADJUSTED TO FIT FIELD CONDITIONS AS APPROVED BY ENGINEER.
- 2) TYPE III BARRICADES SHALL HAVE TWO TYPE "A" FLASHING LIGHTS ON EACH BARRICADE & HAVE A WIDTH OF 8 FEET.
- 3) "W0" SIGNS ARE THE SAME AS "W" SIGNS EXCEPT THE BACKGROUND IS ORANGE.
- 4) CONTRACTOR TO ADJUST TRAFFIC CONTROL SIGNS/DRUMS/DEVICES IN ACCORDANCE WITH THE WISCONSIN DEPARTMENT OF TRANSPORTATION STANDARD DETAIL DRAWINGS.
- 5) COVER OR REMOVE CONFLICTING PAVEMENT MARKINGS.
- 6) ALL SIGNS SHALL BE 48" X 48" UNLESS OTHERWISE NOTED.

PINNACLE ENGINEERING GROUP
 ENGINEERING | NATURAL RESOURCES | SURVEYING

PLAN | DESIGN | DELIVER
 www.pinnacle-engr.com

WISCONSIN OFFICE:
 20725 WATERTOWN ROAD, SUITE 100
 BROOKFIELD, WI 53186
 (262) 754-8888
 CHICAGO | MILWAUKEE | NATIONWIDE

LATITUDE 43
 2825 MAYFAIR RD, WAUWATOSA, WI
 TAXKEY: 299-9986-0001

**DOT TRAFFIC CONTROL
 STAGE 1 & 3**

REVISIONS	
1 RAILROAD COMMENTS	01/19/26
2 DOT SUBMISSION	02/03/26
3 CITY RESUBMITTAL	02/25/26
4 CITY & DOT RESUBMITTAL	04/03/26
5 CLIENT COMMENTS	04/17/26

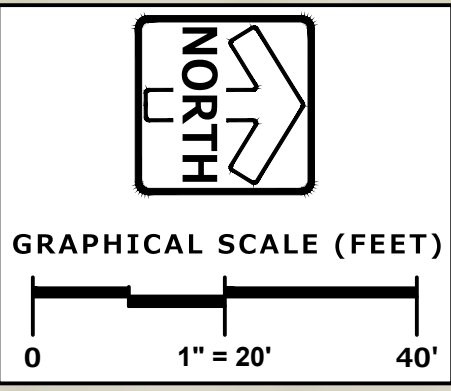
REG JOB No. 6675.00
 REG PM APM
 START DATE 01.05.26
 SCALE 1" = 20'

SHEET
C-8.3
 OF
C-8.13

DRAFTED: JJS DESIGNED: JJS REVIEWED: APW THESE PLANS AND DESIGNS ARE COPYRIGHT PROTECTED AND MAY NOT BE USED IN WHOLE OR IN PART WITHOUT THE WRITTEN CONSENT OF PINNACLE ENGINEERING GROUP, LLC



LEGEND			
	TYPE III BARRICADE WITH TWO TYPE "A" FLASHING LIGHTS		TRAFFIC FLOW DIRECTION
	TYPE III BARRICADE WITH ATTACHED SIGN & TWO TYPE "A" FLASHING LIGHTS		FLASHING ARROW BOARD
	SIGN ON PERMANENT SUPPORT		WORK ZONE
	TRAFFIC CONTROL DRUM		WZ START/END MARKER
	TRAFFIC CONTROL DRUM WITH TYPE C STEADY BURN LIGHT		SIGN ON TEMPORARY SUPPORT
	TEMPORARY CRASH CUSHION		FENCE
	SAWCUT EXISTING PAVEMENT		



- NOTES:**
- 1) THE EXACT NUMBER, LOCATION, & SPACING OF ALL SIGNS & DEVICES SHALL BE ADJUSTED TO FIT FIELD CONDITIONS AS APPROVED BY ENGINEER.
 - 2) TYPE III BARRICADES SHALL HAVE TWO TYPE "A" FLASHING LIGHTS ON EACH BARRICADE & HAVE A WIDTH OF 8 FEET.
 - 3) "WO" SIGNS ARE THE SAME AS "W" SIGNS EXCEPT THE BACKGROUND IS ORANGE.
 - 4) CONTRACTOR TO ADJUST TRAFFIC CONTROL SIGNS/DRUMS/DEVICES IN ACCORDANCE WITH THE WISCONSIN DEPARTMENT OF TRANSPORTATION STANDARD DETAIL DRAWINGS.
 - 5) COVER OR REMOVE CONFLICTING PAVEMENT MARKINGS.
 - 6) ALL SIGNS SHALL BE 48" X 48" UNLESS OTHERWISE NOTED.

PINNACLE ENGINEERING GROUP
 ENGINEERING | NATURAL RESOURCES | SURVEYING
 20725 WATERTOWN ROAD, SUITE 100
 BROOKFIELD, WI 53186
 (262) 754-8888
 CHICAGO | MILWAUKEE | NATIONWIDE

LATITUDE 43
2825 MAYFAIR RD, WAUWATOSA, WI
TAXKEY: 299-9986-0001

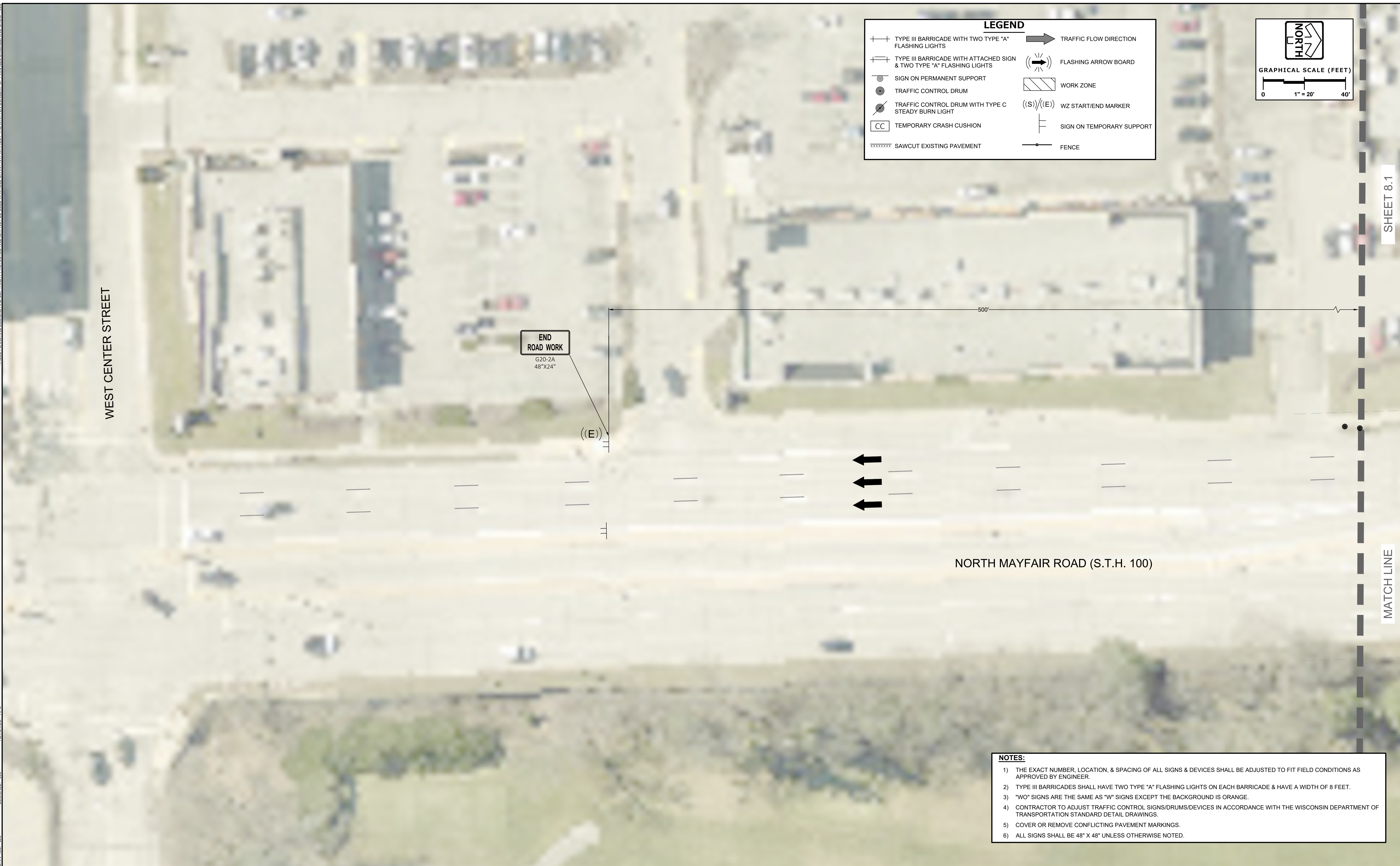
DOT TRAFFIC CONTROL
STAGE 1 & 3

REVISIONS	
1 RAILROAD COMMENTS	01/19/26
2 DOT SUBMISSION	02/03/26
3 CITY RESUBMITTAL	02/25/26
4 CITY & DOT RESUBMITTAL	04/03/26
5 CLIENT COMMENTS	04/17/26

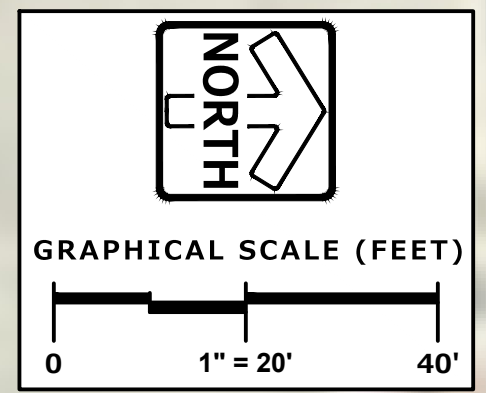
SHEET
C-8.4
 OF
C-8.13

VILLAGE RESUBMITTAL www.pinnacle-engr.com TRAFFIC CONTROL PLAN

DRAFTED: JJS DESIGNED: JJS REVIEWED: APW
 THESE PLANS AND DESIGNS ARE COPYRIGHT PROTECTED AND MAY NOT BE USED IN WHOLE OR IN PART WITHOUT THE WRITTEN CONSENT OF PINNACLE ENGINEERING GROUP, LLC



LEGEND			
	TYPE III BARRICADE WITH TWO TYPE "A" FLASHING LIGHTS		TRAFFIC FLOW DIRECTION
	TYPE III BARRICADE WITH ATTACHED SIGN & TWO TYPE "A" FLASHING LIGHTS		FLASHING ARROW BOARD
	SIGN ON PERMANENT SUPPORT		WORK ZONE
	TRAFFIC CONTROL DRUM		WZ START/END MARKER
	TRAFFIC CONTROL DRUM WITH TYPE C STEADY BURN LIGHT		SIGN ON TEMPORARY SUPPORT
	TEMPORARY CRASH CUSHION		FENCE
	SAWCUT EXISTING PAVEMENT		



END ROAD WORK
G20-2A
48"X24"

((E))

NORTH MAYFAIR ROAD (S.T.H. 100)

WEST CENTER STREET

SHEET 8.1

MATCH LINE

VILLAGE RESUBMITTAL

TRAFFIC CONTROL PLAN

www.pinnacle-engr.com

- NOTES:**
- 1) THE EXACT NUMBER, LOCATION, & SPACING OF ALL SIGNS & DEVICES SHALL BE ADJUSTED TO FIT FIELD CONDITIONS AS APPROVED BY ENGINEER.
 - 2) TYPE III BARRICADES SHALL HAVE TWO TYPE "A" FLASHING LIGHTS ON EACH BARRICADE & HAVE A WIDTH OF 8 FEET.
 - 3) "WO" SIGNS ARE THE SAME AS "W" SIGNS EXCEPT THE BACKGROUND IS ORANGE.
 - 4) CONTRACTOR TO ADJUST TRAFFIC CONTROL SIGNS/DRUMS/DEVICES IN ACCORDANCE WITH THE WISCONSIN DEPARTMENT OF TRANSPORTATION STANDARD DETAIL DRAWINGS.
 - 5) COVER OR REMOVE CONFLICTING PAVEMENT MARKINGS.
 - 6) ALL SIGNS SHALL BE 48" X 48" UNLESS OTHERWISE NOTED.

PINNACLE ENGINEERING GROUP
 ENGINEERING | NATURAL RESOURCES | SURVEYING
 PLAN | DESIGN | DELIVER
 www.pinnacle-engr.com
 WISCONSIN OFFICE:
 20725 WATERTOWN ROAD, SUITE 100
 BROOKFIELD, WI 53186
 (262) 754-8888
 CHICAGO | MILWAUKEE | NATIONWIDE

LATITUDE 43
 2825 MAYFAIR RD, WAUWATOSA, WI
 TAXKEY: 299-9986-0001

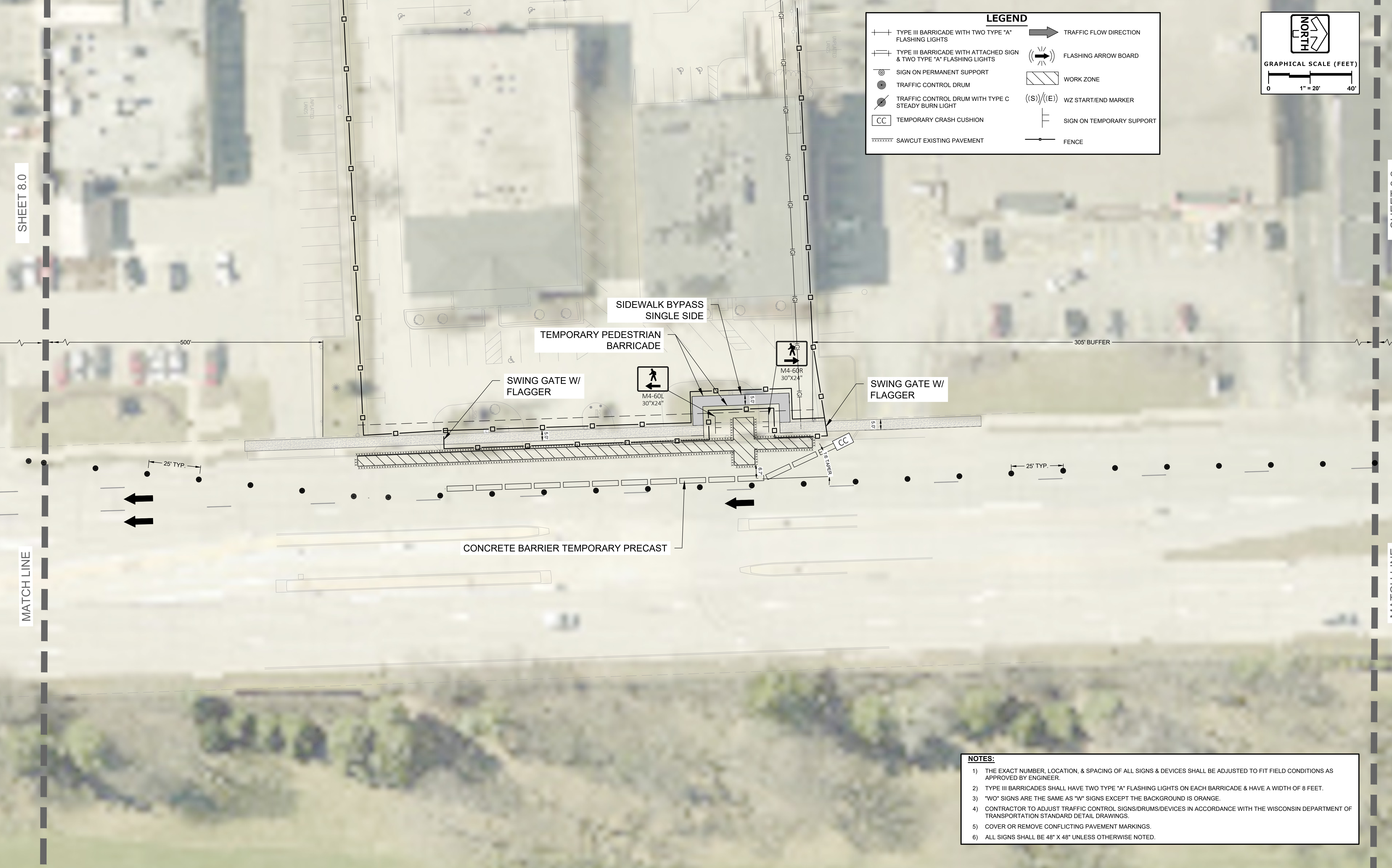
DOT TRAFFIC CONTROL
STAGE 2

REVISIONS	
1 RAILROAD COMMENTS	01/19/26
2 DOT SUBMISSION	02/03/26
3 CITY RESUBMITTAL	02/25/26
4 CITY & DOT RESUBMITTAL	04/03/26
5 CLIENT COMMENTS	04/17/26

REG JOB No. 6675.00
 REG PM APM
 START DATE 01.05.26
 SCALE 1" = 20'
 SHEET
C-8.5
 OF
C-8.13

THESE PLANS AND DESIGNS ARE COPYRIGHT PROTECTED AND MAY NOT BE USED IN WHOLE OR IN PART WITHOUT THE WRITTEN CONSENT OF PINNACLE ENGINEERING GROUP, LLC
 DESIGNED: JIS
 DRAFTED: JIS
 REVIEWED: APM

www.pinnacle-engr.com
 VILLAGE RESUBMITTAL
 TRAFFIC CONTROL PLAN



PINNACLE ENGINEERING GROUP
 ENGINEERING | NATURAL RESOURCES | SURVEYING
 20725 WATERTOWN ROAD, SUITE 100
 BROOKFIELD, WI 53186
 (262) 754-8888
 CHICAGO | MILWAUKEE | NATIONWIDE

LATITUDE 43
 2825 MAYFAIR RD, WAUWATOSA, WI
 TAXKEY: 299-9986-0001

DOT TRAFFIC CONTROL
STAGE 2

REVISIONS	
1 RAILROAD COMMENTS	01/19/26
2 DOT SUBMISSION	02/03/26
3 CITY RESUBMITTAL	02/25/26
4 CITY & DOT RESUBMITTAL	04/03/26

SHEET
C-8.6
 OF
C-8.13

THESE PLANS AND DESIGNS ARE COPYRIGHT PROTECTED AND MAY NOT BE USED IN WHOLE OR IN PART WITHOUT THE WRITTEN CONSENT OF PINNACLE ENGINEERING GROUP, LLC
 REVIEWED: APW
 DESIGNED: JJS
 DRAFTED: JJS

www.pinnacle-engr.com
 VILLAGE RESUBMITTAL
 TRAFFIC CONTROL PLAN

SHEET 8.1

SHEET 8.3

LANE CLOSED

R11-2L
48"X30"

305' BUFFER

320' TAPER

640'

25' TYP.

25' TYP.

TEMPORARY MARKING LINE
REMOVABLE TAPE 4-INCH, WHITE

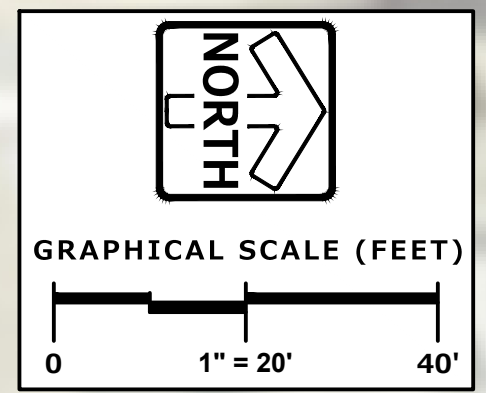
NORTH MAYFAIR ROAD (S.T.H. 100)

MATCH LINE

MATCH LINE

LEGEND

	TYPE III BARRICADE WITH TWO TYPE "A" FLASHING LIGHTS		TRAFFIC FLOW DIRECTION
	TYPE III BARRICADE WITH ATTACHED SIGN & TWO TYPE "A" FLASHING LIGHTS		FLASHING ARROW BOARD
	SIGN ON PERMANENT SUPPORT		WORK ZONE
	TRAFFIC CONTROL DRUM		WZ START/END MARKER
	TRAFFIC CONTROL DRUM WITH TYPE C STEADY BURN LIGHT		SIGN ON TEMPORARY SUPPORT
	TEMPORARY CRASH CUSHION		FENCE
	SAWCUT EXISTING PAVEMENT		



NOTES:

- 1) THE EXACT NUMBER, LOCATION, & SPACING OF ALL SIGNS & DEVICES SHALL BE ADJUSTED TO FIT FIELD CONDITIONS AS APPROVED BY ENGINEER.
- 2) TYPE III BARRICADES SHALL HAVE TWO TYPE "A" FLASHING LIGHTS ON EACH BARRICADE & HAVE A WIDTH OF 8 FEET.
- 3) "W" SIGNS ARE THE SAME AS "V" SIGNS EXCEPT THE BACKGROUND IS ORANGE.
- 4) CONTRACTOR TO ADJUST TRAFFIC CONTROL SIGNS/DRUMS/DEVICES IN ACCORDANCE WITH THE WISCONSIN DEPARTMENT OF TRANSPORTATION STANDARD DETAIL DRAWINGS.
- 5) COVER OR REMOVE CONFLICTING PAVEMENT MARKINGS.
- 6) ALL SIGNS SHALL BE 48" X 48" UNLESS OTHERWISE NOTED.

PINNACLE ENGINEERING GROUP
 ENGINEERING | NATURAL RESOURCES | SURVEYING
 PLAN | DESIGN | DELIVER
 www.pinnacle-engr.com
 WISCONSIN OFFICE:
 20725 WATERTOWN ROAD, SUITE 100
 BROOKFIELD, WI 53186
 (262) 754-8888
 CHICAGO | MILWAUKEE | NATIONWIDE

LATITUDE 43
 2825 MAYFAIR RD, WAUWATOSA, WI
 TAXKEY: 299-9986-0001

DOT TRAFFIC CONTROL
STAGE 2

REVISIONS	
1. RAILROAD COMMENTS	01/19/26
2. DOT SUBMISSION	02/03/26
3. CITY RESUBMITTAL	02/25/26
4. CITY & DOT RESUBMITTAL	04/03/26
5. CLIENT COMMENTS	04/17/26

SHEET
C-8.7
 OF
C-8.13

THESE PLANS AND DESIGNS ARE COPYRIGHT PROTECTED AND MAY NOT BE USED IN WHOLE OR IN PART WITHOUT THE WRITTEN CONSENT OF PINNACLE ENGINEERING GROUP, LLC
 DESIGNED: JJS
 DRAFTED: JJS
 REVIEWED: APM

SHEET 8.2

MATCH LINE

SHEET 8.4

VILLAGE RESUBMITTAL

MATCH LINE

www.pinnacle-engr.com

TRAFFIC CONTROL PLAN

LEGEND

	TYPE III BARRICADE WITH TWO TYPE "A" FLASHING LIGHTS		TRAFFIC FLOW DIRECTION
	TYPE III BARRICADE WITH ATTACHED SIGN & TWO TYPE "A" FLASHING LIGHTS		FLASHING ARROW BOARD
	SIGN ON PERMANENT SUPPORT		WORK ZONE
	TRAFFIC CONTROL DRUM		WZ START/END MARKER
	TRAFFIC CONTROL DRUM WITH TYPE C STEADY BURN LIGHT		SIGN ON TEMPORARY SUPPORT
	TEMPORARY CRASH CUSHION		FENCE
	SAWCUT EXISTING PAVEMENT		

GRAPHICAL SCALE (FEET)



NORTH MAYFAIR ROAD (S.T.H. 100)

- NOTES:**
- 1) THE EXACT NUMBER, LOCATION, & SPACING OF ALL SIGNS & DEVICES SHALL BE ADJUSTED TO FIT FIELD CONDITIONS AS APPROVED BY ENGINEER.
 - 2) TYPE III BARRICADES SHALL HAVE TWO TYPE "A" FLASHING LIGHTS ON EACH BARRICADE & HAVE A WIDTH OF 8 FEET.
 - 3) "WO" SIGNS ARE THE SAME AS "W" SIGNS EXCEPT THE BACKGROUND IS ORANGE.
 - 4) CONTRACTOR TO ADJUST TRAFFIC CONTROL SIGNS/DRUMS/DEVICES IN ACCORDANCE WITH THE WISCONSIN DEPARTMENT OF TRANSPORTATION STANDARD DETAIL DRAWINGS.
 - 5) COVER OR REMOVE CONFLICTING PAVEMENT MARKINGS.
 - 6) ALL SIGNS SHALL BE 48" X 48" UNLESS OTHERWISE NOTED.

PINNACLE ENGINEERING GROUP
 ENGINEERING | NATURAL RESOURCES | SURVEYING
 PLAN | DESIGN | DELIVER
 www.pinnacle-engr.com
 WISCONSIN OFFICE:
 20725 WATERTOWN ROAD, SUITE 100
 BROOKFIELD, WI 53186
 (262) 754-8888
 CHICAGO | MILWAUKEE | NATIONWIDE

LATITUDE 43
 2825 MAYFAIR RD, WAUWATOSA, WI
 TAXKEY: 299-9986-0001

DOT TRAFFIC CONTROL
STAGE 2

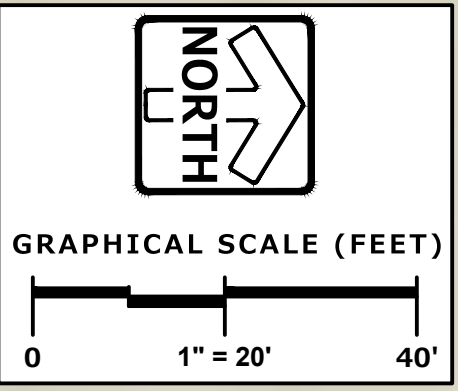
REVISIONS	
1 RAILROAD COMMENTS	01/19/26
2 DOT SUBMISSION	02/03/26
3 CITY RESUBMITTAL	02/25/26
4 CITY & DOT RESUBMITTAL	04/03/26
5 CLIENT COMMENTS	04/17/26

SHEET
C-8.8
 OF
C-8.13

THESE PLANS AND DESIGNS ARE COPYRIGHT PROTECTED AND MAY NOT BE USED IN WHOLE OR IN PART WITHOUT THE WRITTEN CONSENT OF PINNACLE ENGINEERING GROUP, LLC
 DESIGNED: JJS
 REVIEWED: APM
 DRAFTED: JJS



LEGEND			
	TYPE III BARRICADE WITH TWO TYPE "A" FLASHING LIGHTS		TRAFFIC FLOW DIRECTION
	TYPE III BARRICADE WITH ATTACHED SIGN & TWO TYPE "A" FLASHING LIGHTS		FLASHING ARROW BOARD
	SIGN ON PERMANENT SUPPORT		WORK ZONE
	TRAFFIC CONTROL DRUM		WZ START/END MARKER
	TRAFFIC CONTROL DRUM WITH TYPE C STEADY BURN LIGHT		SIGN ON TEMPORARY SUPPORT
	TEMPORARY CRASH CUSHION		FENCE
	SAWCUT EXISTING PAVEMENT		



- NOTES:**
- 1) THE EXACT NUMBER, LOCATION, & SPACING OF ALL SIGNS & DEVICES SHALL BE ADJUSTED TO FIT FIELD CONDITIONS AS APPROVED BY ENGINEER.
 - 2) TYPE III BARRICADES SHALL HAVE TWO TYPE "A" FLASHING LIGHTS ON EACH BARRICADE & HAVE A WIDTH OF 8 FEET.
 - 3) "WO" SIGNS ARE THE SAME AS "W" SIGNS EXCEPT THE BACKGROUND IS ORANGE.
 - 4) CONTRACTOR TO ADJUST TRAFFIC CONTROL SIGNS/DRUMS/DEVICES IN ACCORDANCE WITH THE WISCONSIN DEPARTMENT OF TRANSPORTATION STANDARD DETAIL DRAWINGS.
 - 5) COVER OR REMOVE CONFLICTING PAVEMENT MARKINGS.
 - 6) ALL SIGNS SHALL BE 48" X 48" UNLESS OTHERWISE NOTED.

PINNACLE ENGINEERING GROUP
 ENGINEERING | NATURAL RESOURCES | SURVEYING
 20725 WATERTOWN ROAD, SUITE 100
 BROOKFIELD, WI 53186
 (262) 754-8888
 CHICAGO | MILWAUKEE | NATIONWIDE

PLAN | DESIGN | DELIVER
 www.pinnacle-engr.com
LATITUDE 43
2825 MAYFAIR RD, WAUWATOSA, WI
TAXKEY: 299-9986-0001

DOT TRAFFIC CONTROL
STAGE 2

REVISIONS	
1 RAILROAD COMMENTS	01/19/26
2 DOT SUBMISSION	02/03/26
3 CITY RESUBMITTAL	02/25/26
4 CITY & DOT RESUBMITTAL	04/03/26

SHEET
C-8.9
 OF
C-8.13

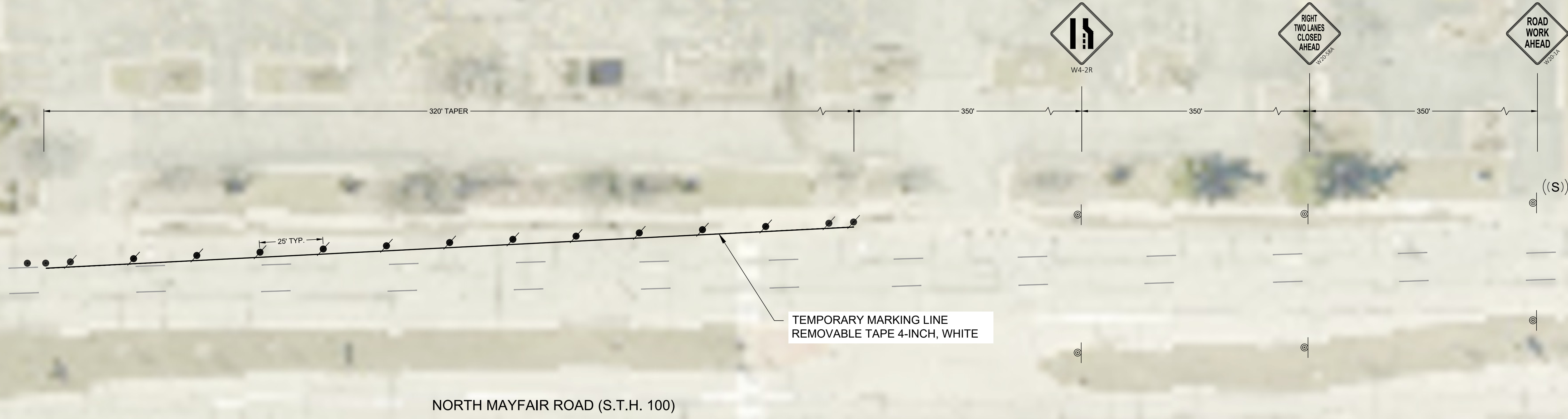
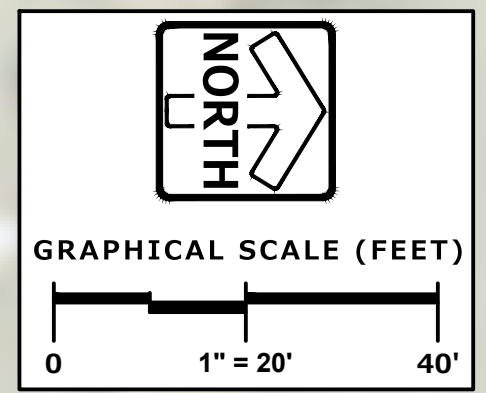
VILLAGE RESUBMITTAL
 TRAFFIC CONTROL PLAN
 www.pinnacle-engr.com

THESE PLANS AND DESIGNS ARE COPYRIGHT PROTECTED AND MAY NOT BE USED IN WHOLE OR IN PART WITHOUT THE WRITTEN CONSENT OF PINNACLE ENGINEERING GROUP, LLC
 REVIEWED: APM
 DESIGNED: JIS
 DRAFTED: JIS

SHEET 8.4

MATCH LINE

LEGEND			
	TYPE III BARRICADE WITH TWO TYPE "A" FLASHING LIGHTS		TRAFFIC FLOW DIRECTION
	TYPE III BARRICADE WITH ATTACHED SIGN & TWO TYPE "A" FLASHING LIGHTS		FLASHING ARROW BOARD
	SIGN ON PERMANENT SUPPORT		WORK ZONE
	TRAFFIC CONTROL DRUM		WZ START/END MARKER
	TRAFFIC CONTROL DRUM WITH TYPE C STEADY BURN LIGHT		SIGN ON TEMPORARY SUPPORT
	TEMPORARY CRASH CUSHION		FENCE
	SAWCUT EXISTING PAVEMENT		



TEMPORARY MARKING LINE
REMOVABLE TAPE 4-INCH, WHITE

NORTH MAYFAIR ROAD (S.T.H. 100)

- NOTES:**
- 1) THE EXACT NUMBER, LOCATION, & SPACING OF ALL SIGNS & DEVICES SHALL BE ADJUSTED TO FIT FIELD CONDITIONS AS APPROVED BY ENGINEER.
 - 2) TYPE III BARRICADES SHALL HAVE TWO TYPE "A" FLASHING LIGHTS ON EACH BARRICADE & HAVE A WIDTH OF 8 FEET.
 - 3) "WO" SIGNS ARE THE SAME AS "W" SIGNS EXCEPT THE BACKGROUND IS ORANGE.
 - 4) CONTRACTOR TO ADJUST TRAFFIC CONTROL SIGNS/DRUMS/DEVICES IN ACCORDANCE WITH THE WISCONSIN DEPARTMENT OF TRANSPORTATION STANDARD DETAIL DRAWINGS.
 - 5) COVER OR REMOVE CONFLICTING PAVEMENT MARKINGS.
 - 6) ALL SIGNS SHALL BE 48" X 48" UNLESS OTHERWISE NOTED.

PINNACLE ENGINEERING GROUP
 ENGINEERING | NATURAL RESOURCES | SURVEYING
 PLAN | DESIGN | DELIVER
 www.pinnacle-engr.com
 WISCONSIN OFFICE:
 20725 WATERTOWN ROAD, SUITE 100
 BROOKFIELD, WI 53186
 (262) 754-8888
 CHICAGO | MILWAUKEE | NATIONWIDE

LATITUDE 43
 2825 MAYFAIR RD, WAUWATOSA, WI
 TAXKEY: 299-9986-0001

**DOT TRAFFIC CONTROL
 STAGE 2**

REVISIONS	
1 RAILROAD COMMENTS	01/19/26
2 DOT SUBMISSION	02/03/26
3 CITY RESUBMITTAL	02/25/26
4 CITY & DOT RESUBMITTAL	04/03/26
5 CLIENT COMMENTS	04/17/26

SHEET
C-8.10
 OF
C-8.13

www.pinnacle-engr.com
 VILLAGE RESUBMITTAL
 TRAFFIC CONTROL PLAN