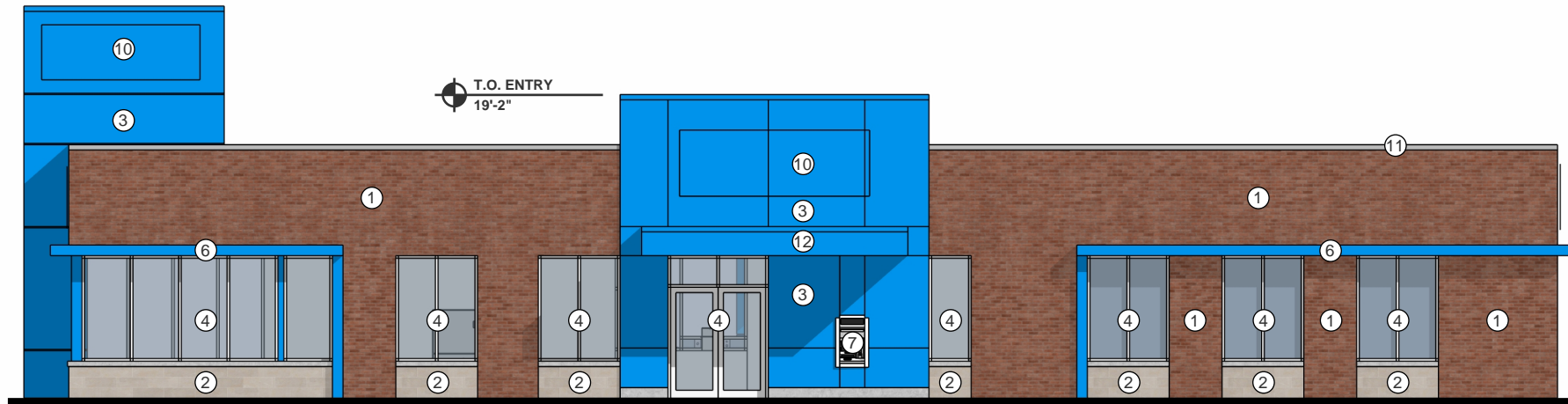
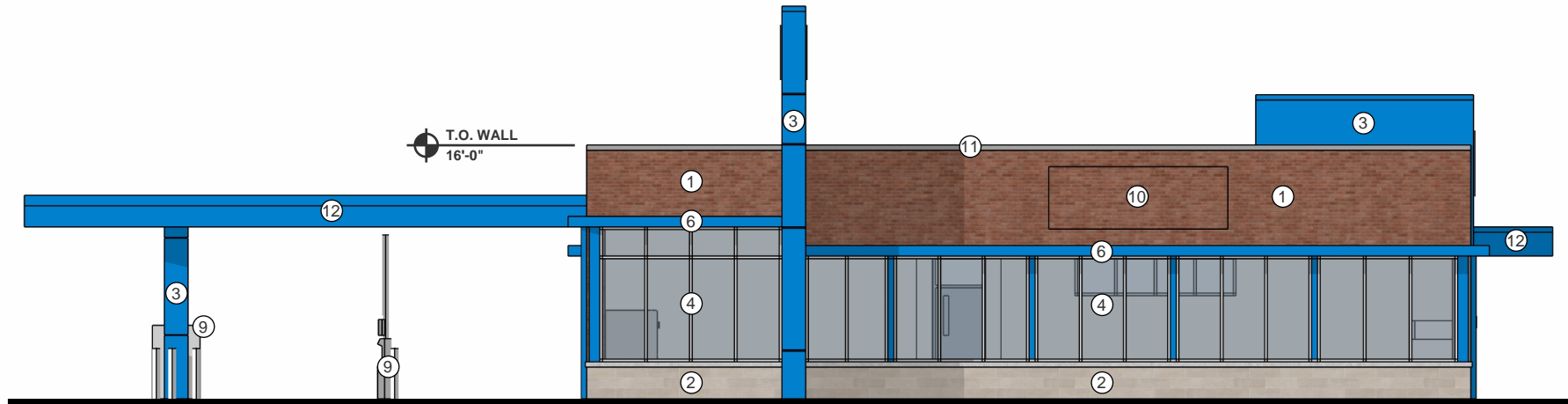


BUILDING 2

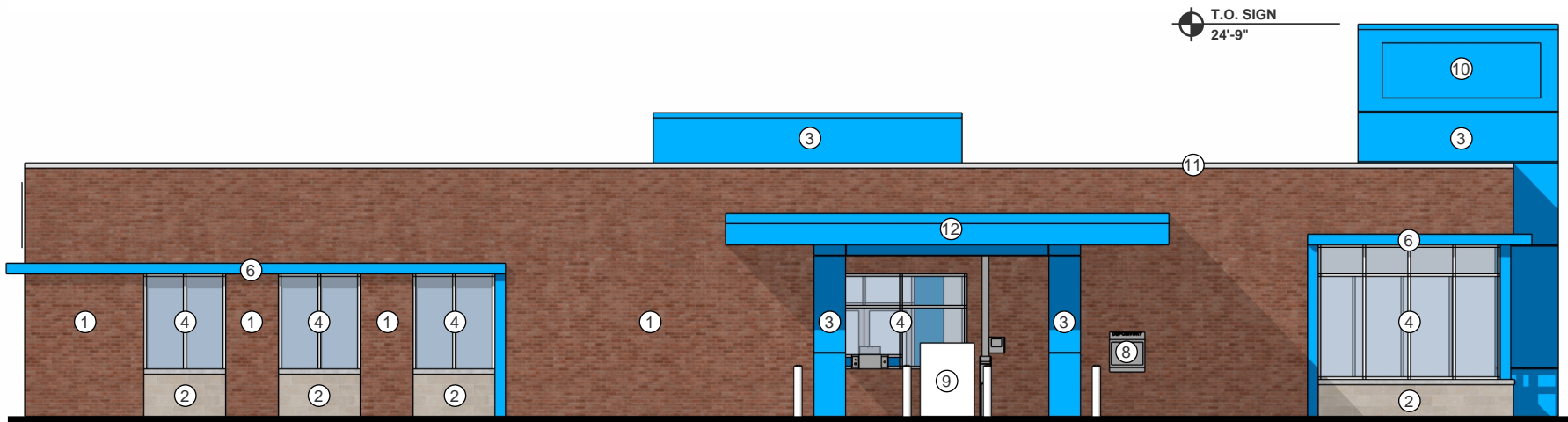
West
3/32" = 1'-0"



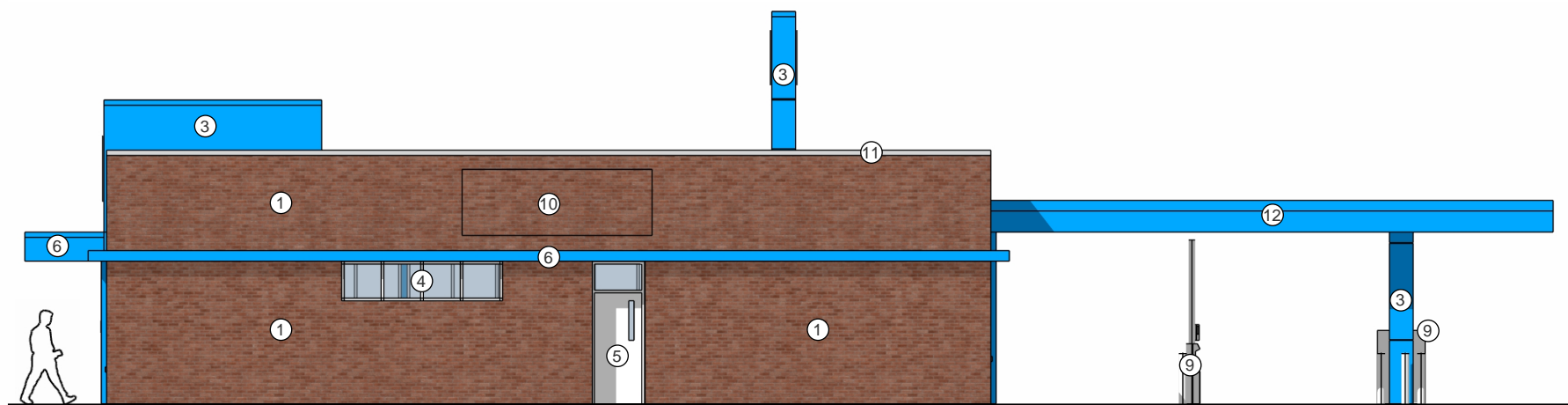
North
3/32" = 1'-0"



East
3/32" = 1'-0"



South
3/32" = 1'-0"



BUILDING 2 - ELEVATION NOTES

- 1 Brick: color red
- 2 Burnished stone block w/ stone sill: color cream
- 3 Architectural metal panel: color blue
- 4 Aluminum storefront window system w/ clear glass: clear anodized
- 5 Painted hollow metal door w/ vision panel: color white
- 6 Metal accent brow: color blue
- 7 Walk-up ATM
- 8 Depository
- 9 Bank drive-thru equipment by owner
- 10 Tenant signage for approximate location, final approval at later date
- 11 Brake metal coping: color silver
- 12 Metal canopy: color blue

Notes do not align between buildings
Scale does not align between buildings

Artistic and/or computer renderings are not a contractual representation of the finished product and GROTH Design Group makes no warranties and representations that the depictions of such renderings will be replicated in the finished product. Client acknowledges and agrees that the terms of the contract, not the renderings shall control.