



Wauwatosa, WI

Transportation Affairs Committee

Meeting Agenda - Final

7725 W. North Avenue
Wauwatosa, WI 53213

Tuesday, February 28, 2023

6:30 PM

Committee Room #1 and Zoom:
<https://servetosa.zoom.us/j/81144274572>,
Meeting ID: 811 4427 4572

Regular Meeting

HYBRID MEETING INFORMATION

Members of the public may observe and participate in the meeting in-person or via Zoom at the link above. To access the Zoom meeting via phone, call 1-312-626-6799 and enter the Meeting ID.

CALL TO ORDER

ROLL CALL

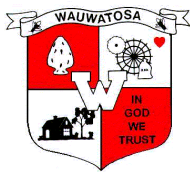
TRANSPORTATION AFFAIRS COMMITTEE ITEMS

1. Request to modify parking regulations on River Parkway from 68th Street to 63rd Street, and on 63rd Street from River Parkway to State Street following the conclusion of a 90 day trial [23-493](#)
2. Request to modify parking regulations on the west side of 68th Street 175 feet North and 175 feet South of Hillcrest Drive [23-532](#)

ADJOURNMENT

NOTICE TO PERSONS WITH A DISABILITY

Persons with a disability who need assistance to participate in this meeting should call the City Clerk's office at (414) 479-8917 or send an email to tclerk@wauwatosa.net, with as much advance notice as possible.



CITY OF WAUWATOSA
MEMO

To: **Transportation Affairs Committee**

From: **Michael May, Senior Civil Engineer – Traffic & Transportation**

Date: **February 22, 2023**

Subject: **Request to Modify Parking Regulations on River Parkway from 68th Street to 63rd Street, and on 63rd Street from River Parkway to State Street**

A. Issue

Parking regulations along River Parkway and along 63rd Street are inconsistent and posted in a manner that reflects land uses that have since been redeveloped. An approved 90-day trial of parking modifications along both River Parkway and 63rd Street began in mid-November 2023 and is now complete.

B. Background/Options

Parking prohibitions on both River Parkway and 63rd Street reflect the needs of former industrial sites that have since been redeveloped. The parking zones are both outdated and confusing. Additionally, parking is permitted along 63rd Street in proximity to the rail crossing. Parking in close proximity to the rail crossing poses a safety risk because a motorist may find themselves waiting at or on the tracks behind another vehicle being parallel parked.

Redevelopment within the area includes multifamily residential at the corner of River Parkway & 63rd Street. There are also plans for a potential recreational trail along the Menomonee River in the future as part of the future development of Hart Park east of 68th Street.

Modifying parking regulations during the 90-day trial helped improve safety at the rail crossing, provided additional parking for residents and businesses in the area, and provided additional parking for recreation.

Staff recommends that the following parking changes, which reflect the 90-day trial, be made permanent.

North side of River Parkway and west side of 63rd Street

1. Prohibit parking at all times along the north side of River Parkway from 68th Street to approximately 705-feet east of said 68th Street.
2. Eliminate parking prohibitions along the north side of River Parkway from approximately 705-feet east of 68th Street to approximately 925-feet east of said 68th Street.
3. Prohibit parking from 7AM to 5PM Monday-Friday along the north side of River Parkway from approximately 925-feet east of 68th Street to approximately 1,240-feet east of 68th Street.
4. Eliminate parking prohibitions along the north side of River Parkway from approximately 1,240-feet east of 68th Street to approximately 110-feet west of 63rd Street.
5. Prohibit parking along the northwest curve from River Parkway to 63rd Street.
6. Eliminate parking prohibitions along the west side of 63rd Street from approximately 305-feet south of the southern-most railroad track to approximately 225-feet south of the said southern-most railroad track.

7. Prohibit parking along the west side of 63rd Street from approximately 225-feet south of the southern-most railroad track to State Street.

South side of River Parkway and east side of 63rd Street

8. Eliminate parking prohibitions along the south side of River Parkway from approximately 65-feet east of 68th Street to approximately 910-feet east of 68th Street.
9. Prohibit parking from 7AM to 5PM Monday-Friday along the south side of River Parkway from approximately 910-feet east of 68th Street to approximately 1,225-feet east of 68th Street.
10. Eliminate parking prohibitions along the south side of River Parkway from approximately 1,125-feet east of 68th Street through the curve with 63rd Street.
11. Eliminate parking prohibitions along the east side of 63rd Street through the curve with River Parkway to approximately 170-feet south of the southern-most railroad track.
12. Prohibit parking at all times from 170-feet south of the southernmost railroad track to State Street.

Letters were mailed to all adjacent property owners. If approved, City staff will permanently post or remove posted parking signs.

C. Strategic Plan (Area of Focus)

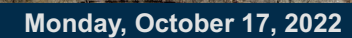
Priority 2: Public Safety

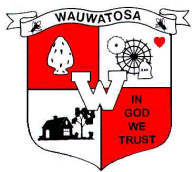
D. Fiscal Impact

Minor expenses for in-house creation and installation of signs as well as removal of existing signs where applicable. The existing sign budget will accommodate these expenses.

E. Recommendation

Approve parking changes as outlined in section B and shown on the attached exhibit.





CITY OF WAUWATOSA
MEMO

To: **Transportation Affairs Committee**

From: **Michael May, Senior Civil Engineer – Traffic & Transportation**

Date: **February 22, 2023**

Subject: **Request to Modify Parking Regulations on the West Side of 68th Street both North and South of Hillcrest Drive**

A. Issue

Vehicles parking along 68th Street block the view of motorists waiting to turn or cross from the west leg of Hillcrest Drive.

B. Background/Options

68th Street is a collector street and is approximately 30-feet wide. Parking is prohibited on the east side of 68th Street from Milwaukee Avenue to just south of North Avenue. Parking is prohibited between 6:30am to 9:00am, except on Saturdays, Sundays and legal holidays, on the west side of 68th from just north of Milwaukee Avenue to Garfield Avenue, and is otherwise permitted.

Staff received a citizen request to prohibit parking at all times on 68th Street within close proximity to Hillcrest Drive. As its name suggests, this intersection is located at the crest of a hill on 68th Street. The citizen concern is for motorists along 68th Street who must properly position themselves in the roadway in advance of the crest of the hill so-as to avoid an opposing direction sideswipe crash. The concern is also for motorists exiting Hillcrest Drive to adequately see approaching traffic on 68th Street, judge gaps in the 68th Street traffic stream, and then safely complete a turn or crossing maneuver.

Upon review of intersection sight distances, staff is recommending the following parking change as shown in the attached exhibit and summarized as follows.

- Prohibit parking along the west side of 68th Street from 175-feet north of Hillcrest Drive to 175-feet south of Hillcrest Drive.

Letters were sent to the four property owners along 68th Street abutting this proposed parking change. If approved, City staff will permanently post or remove posted parking signs.

C. Strategic Plan (Area of Focus)

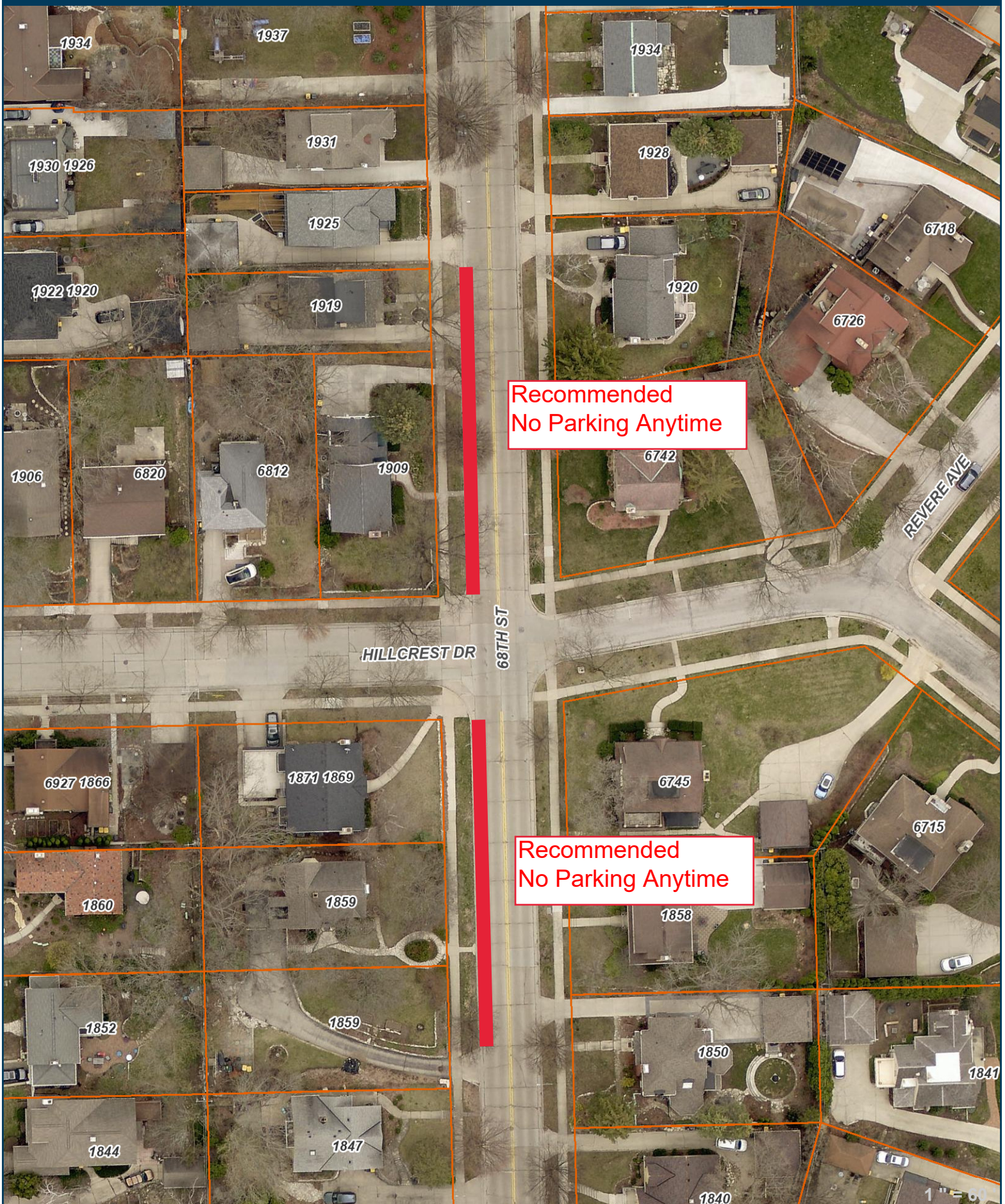
Priority 2: Public Safety

D. Fiscal Impact

Minor expenses for in-house creation and installation of signs as well as removal of existing signs where applicable. Existing sign budget will accommodate these expenses.

E. Recommendation

Approve parking changes as outlined in section B and shown on the attached exhibit.



Recommended
No Parking Anytime

Recommended
No Parking Anytime

68th & Hillcrest

City of
Wauwatosa

