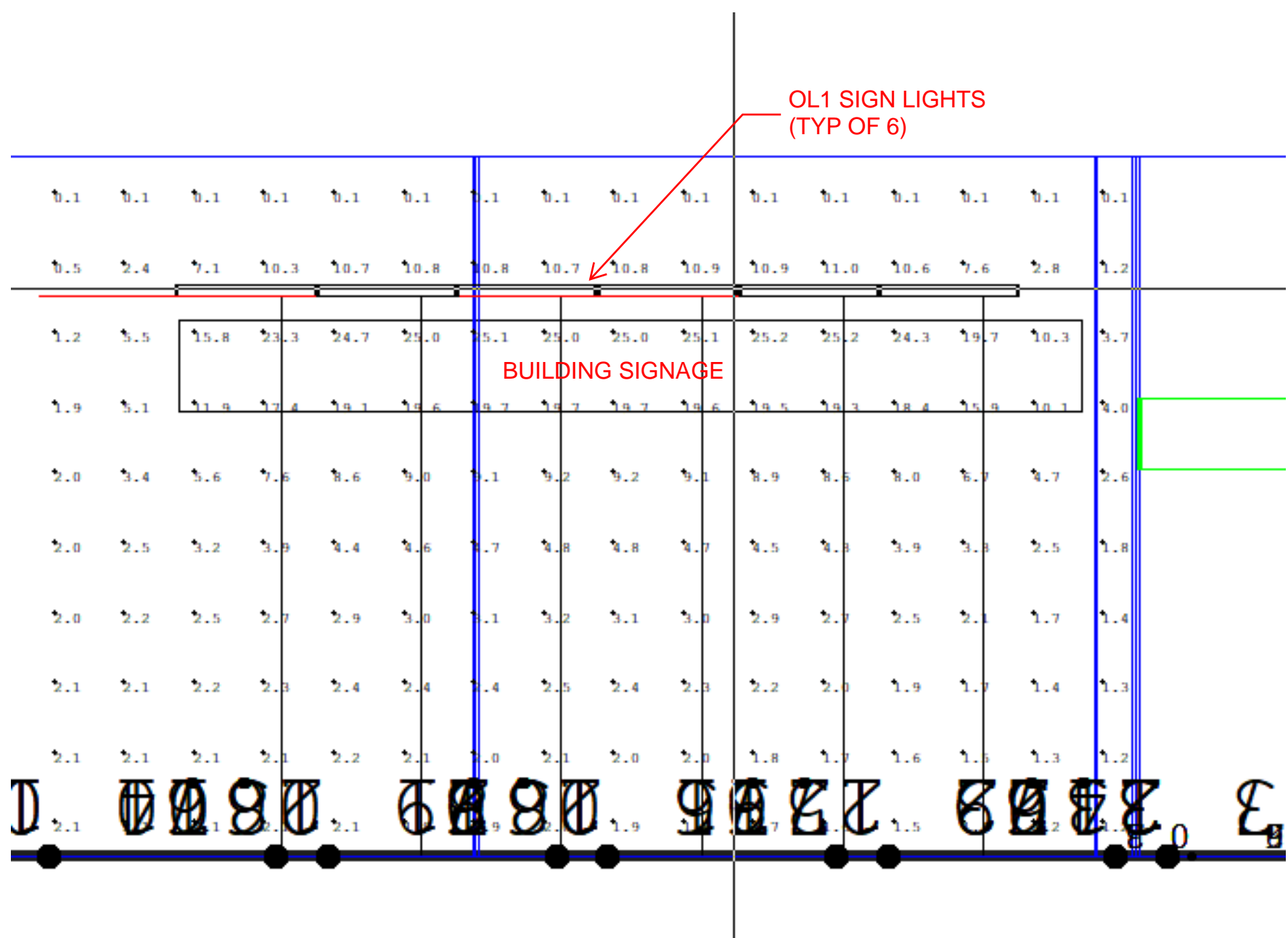


Site Photometric & Exterior Light Fixtures



Statistics

Project 1

Calc Pts

building outside

Illuminance (Fc)

Average=1.81 Maximum=11.6 Minimum=0.0

Avg/Min=N.A. Max/Min=N.A.

building outside_Side_4

Illuminance (Fc)

Average=4.79 Maximum=48.1 Minimum=0.1

Avg/Min=47.90 Max/Min=481.00

canopy

Illuminance (Fc)

Average=4.53 Maximum=23.0 Minimum=0.2

Avg/Min=22.65 Max/Min=115.00

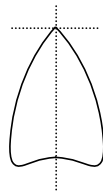
parking lot

Illuminance (Fc)

Average=1.80 Maximum=8.9 Minimum=0.0

Avg/Min=N.A. Max/Min=N.A.

NOT FOR CONSTRUCTION
THESE DRAWINGS ARE RELEASED FOR
DESIGN DEVELOPMENT PURPOSES
ONLY. THEY ARE NOT TO BE USED FOR
REGULATORY APPROVAL, PERMIT, OR
CONSTRUCTION PURPOSES.



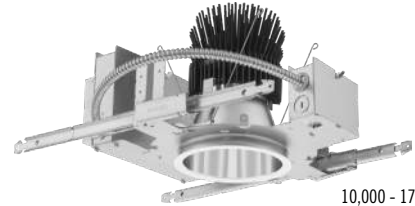
LOCATED IN CANOPY

General Illumination Round Downlight

6"



250 - 8,000 lumens

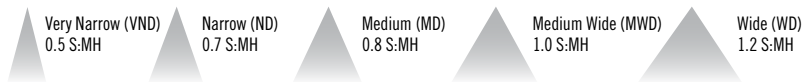


10,000 - 17,500 lumens

Feature Set

- Bounding Ray™ optical design
- Unitized optics mechanically attach the light engine to the lower reflector for complete optical alignment.
- 45° cutoff to source and source image
- Fully serviceable and upgradeable lensed LED light engine
- 70% lumen maintenance at 60,000 hours
- 2.5 MacAdam Ellipse; 85 CRI typical, 90+ CRI optional
- Fixtures are wet location, covered ceiling
- Available with 10% dimming, 1% dimming, or dim to dark
- Batwing distribution with feathered edges provides even illumination on horizontal and vertical surfaces
- ENERGY STAR® certified product
- UGR of zero for fixtures aimed at nadir with a cut-off equal to or less than 60deg per CIE 117-1995 Discomfort Glare in Interior Lighting. [UGR FAQ](#)

Distribution



Superior Performance

Nominal Lumens	250	500	750	1000	1500	2000	2500	3000	3500	4000	4500	5000	6000	8000	10,000	12,000	15,000	17,500
Delivered Lumens	297	519	776	994	1471	2006	2537	3077	3542	4027	4533	5256	6371	8247	10637	12332	15776	17801
Wattage	3.4	6.2	8.2	9.6	14.7	19.7	24.7	29.5	33.8	39.0	47.3	48.7	57.6	74.9	97.1	115.0	150.9	175.3
Lumens per Watt	87.4	83.7	94.6	103.5	100.1	101.8	102.7	104.3	104.8	103.3	95.8	107.9	110.6	110.1	109.5	107.2	104.5	101.5

*Based on 3500K AR LSS MWD 80CRI



Items marked by a shaded background qualify for the Design Select program and ship in 15 days or less. To learn more about Design Select, visit www.acuitybrands.com/designselect.

*See ordering tree for details

Coordinated Apertures | Multiple Layers of Light



General Illumination Layer | EVO



High Center Beam Layer | Incito



EVO + Incito — Multiple Layers of Light

Core

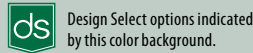


Healthcare



Special Applications





Luminaire Type:

Catalog Number:

EXAMPLE: EV06 35/150 AR MWD LSS MVOLT EZ1

Series	Color Temperature	Nominal Lumen Values	Reflector & Flange Color	Trim Style	Finish
EV06	27/ 2700 K 30/ 3000 K 35/ 3500 K 40/ 4000 K 50/ 5000 K	02 250 lumens 05 500 lumens 07 750 lumens 10 1000 lumens 15 1500 lumens 20 2000 lumens 25 2500 lumens 30 3000 lumens 35 3500 lumens	40 4000 lumens 45 4500 lumens 50 5000 lumens 60 6000 lumens 80 8000 lumens 100 10000 lumens 120 12000 lumens 150 15000 lumens 175 17500 lumens	AR Clear PR Pewter WTR Wheat GR Gold WR ¹ White BR ¹ Black WRAMF ¹ White Anti-microbial TRALTBD ^{1,2} RAL paint for pricing only TCPC ¹ Custom paint color	(blank) Self-flanged FL Flangeless LSS Semi-specular LD Matte-diffuse LS Specular

Distribution	Voltage	Driver ⁵	
VND Very Narrow (0.5 s/mh) ND Narrow (0.7 s/mh) MD Medium (0.9 s/mh) MWD Medium Wide (1.0 s/mh) WD Wide (1.2 s/mh)	MVOLT 120 277 347 ^{3,4}	GZ10 0-10V driver dims to 10% GZ1 0-10V driver dims to 1% EZ10 eldoLED 0-10V ECOdrive. Linear dimming to 10% min. EZ1 eldoLED 0-10V ECOdrive. Linear dimming to 1% min. EZB eldoLED 0-10V SOLOdrive. Logarithmic dimming to <1%. EDAB eldoLED SOLOdrive DALI. Logarithmic dimming to <1%.	EDXB eldoLED POWERdrive DMX with RDM (remote device management). Square Law dimming to <1%. Includes termination resistor. Refer to DMXR Manual . Minimum 1000 lumens/Maximum 15000 lumens. ECOD ⁶ Lutron Ecosystem digital Hi-Lume 1% soft-on, fade to black. Max: 4000LM.

Control Interface	Emergency Options	Options
NLT ⁷ nLight® dimming pack controls NLTER ^{3,7,8} nLight® dimming pack controls emergency circuit NLTAIR ^{2,9,10} nLight® AIR enabled NLTAIRER ^{2,3,8,10} nLight® AIR enabled emergency NLTAIREM ^{2,9} nLight® AIR Dimming Pack Wireless Controls. Controls fixtures on emergency circuit with battery pack options.	EL Emergency battery pack, 10W, with integral test switch ELR Emergency battery pack, 10W, with remote test switch ELSD Emergency battery pack, 10W, with self-diagnostics, integral test switch ELRSD Emergency battery pack, 10W, with self-diagnostics, remote test switch E10WCP Emergency battery pack, 10W Constant Power, CA Title 20 compliant with integral test switch E10WCPR Emergency battery pack, 10W Constant Power, CA Title 20 compliant with remote test switch BGTD Bodine generator transfer device. Specify 120V or 277V.	SF Single fuse. Specify 120V or 277V. TRW ¹¹ White painted flange TRBL ¹² Black painted flange FRALTBD ² Flange ring only RAL color for pricing only FCPC Flange custom paint color N80 ¹³ nLight® Lumen Compensation GTD generator transfer device. Specify 120V or 277V 90CRI High CRI (90+) CP ¹⁴ Chicago Plenum. Specify 120V or 277V for 5000lm and above. HAO ¹⁵ HAO High Ambient Option (40°C) RRL RELOC®-ready luminaire connectors enable a simple and consistent factory installed option across all ABL luminaire brands. Available only with RRLA, RRLB, RRLAE, and RRLC12S. Refer to RRL spec sheet on www.acuitybrands.com for RELOC® product specifications. Above ceiling access required.

ACCESSORIES – order as separate catalog numbers (shipped separately)

SCA6	Sloped ceiling adapter. Degree of slope must be specified (5D, 10D, 15D, 20D, 25D, 30D). Ex: SCA6 10D. Refer to TECH-190 .
CTA EV06	6" Aperture ceiling thickness adapter, for up to 8,000LM (extends mounting frame to accommodate ceiling thickness up to 5").
CTA4-8 YK	4"-8" Aperture ceiling thickness adapter for use with EDXB or CP up to 8,000LM, or nTune options (extends mounting frame to accommodate ceiling thickness up to 5").
CTA4-8 YKHL	6" Aperture ceiling thickness adapter, for 10,000LM and up (extends mounting frame to accommodate ceiling thickness up to 5"). For use with CWW/DWW trims, EDXB, CP or nTune options.
ISD BC	0-10V wallbox dimmer. Refer to ISD-BC .

ORDERING NOTES

- Not available with finishes.
- Replace with applicable RAL number and finish when ready to order. See [RAL BROCHURE](#) for available color options. Not available with emergency battery pack options.
- Not available with emergency battery pack options.
- Supplied with factory installed step down transformer.
- Refer to [TECH-240](#) for compatible dimmers.
- Not available with nLight®.
- Specify voltage.
- ER for use with generator supply power. Will require an emergency hot feed and normal hot feed.
- Not available DALI or DMX drivers. Not available with CP or N80 options. Not recommended for metal ceiling installations.
- When combined with the EZ1, EZ10, or EZB option, normal luminaires (non-emergency) can be used as a normal power sensing device for nearby nLight AIR devices and luminaires with EM emergency options.
- For use with different reflector finish only (i.e. AR, PR, WTR, GR options). Not applicable with WR (white reflector) or FL (flangeless) option.
- For use with different reflector finish only (i.e. AR, PR, WTR, GR options). Not applicable with BR (black reflector) or FL (flangeless) option.
- Fixture begins at 80% light level. Must be specified with NLT or NLTER. Only available with EZ10 and EZ1 drivers.
- 12,000LM max with EL or nLight® options. 5,000LM max with Lutron drivers combined with EL. Not available with ELR, HAO, or EXAB, or any nLight® AIR dimming options.
- Only available 5000LM - 15,000LM with eldoLED drivers.

Optical Assembly

Optical design is a Bounding Ray™ design with 45° cutoff to source and source image. Top-down flash characteristic for superior glare control. Unitized optics shall have mechanical attachment of the light engine to the lower reflector for complete optical alignment.

Electrical

The luminaire shall operate from a 50 or 60 Hz ± 3 Hz AC line over a voltage ranging from 120 VAC to 277 VAC. The fluctuations of line voltage shall have no visible effect on the luminous output.

The luminaire shall have a power factor of 90% or greater at all standard operating voltages and full luminaire output.

Sound Rated A+. Driver shall be >80% efficient at full load across all input voltages.

Input wires shall be 18AWG, 300V minimum, solid copper.

Controls

Luminaire shall be equipped with interface for nLight wired or wireless network with integral power supply as per specification.

Dimming

The luminaire shall be capable of continuous dimming without perceivable stroboscopic flicker as measured by flicker index (ANSI/IES RP-16-10) over a range of 100 – 10%, 100 – 1.0% or 100 – 0.1% of rated lumen output with a smooth shut off function to step to 0%.

eldoLED LED drivers shall conform to IEEE P1789 standards. Alternatively, manufacturers must demonstrate conformance with product literature and testing which demonstrates this performance. Systems that do not meet IEEE P1789 will not be considered.

Driver is inaudible in 24dB environment, and stable when input voltage conditions fluctuate over what is typically experienced in a commercial environment.

Construction

Fully serviceable and upgradeable lensed LED light engine, both the driver and light engine are suitable for field maintenance and are serviceable from above or below the ceiling.

Luminaire housing shall be constructed of 16-gauge galvanized steel and have preinstalled telescopic mounting bars with maximum 32" and minimum 15" extension and 4" vertical adjustment.

Luminaires shall be suitable for installation in ceilings up to 1½" thick. (specify ceiling thickness adapter to extend frame to accommodate ceiling thickness up to 5").

Tool-less adjustments shall be possible after installation.

The assembly and manufacturing process for the luminaire shall be designed to assure all internal components are adequately supported to withstand mechanical shock and vibration.

25°C ambient temperature standard (1/2" clearance on all sides from non-combustible materials in non-IC applications, unless marked spacing noted otherwise). For use in insulated ceilings, a 3" clearance on all sides from insulation is required (unless marked spacing noted otherwise). 40°C high ambient optional.

Listings

Fixtures are CSA certified to meet US and Canadian Standards: All fixtures manufactured in strict accordance with the appropriate and current requirements of the "Standards for Safety" to UL, wet location covered ceiling. Luminaire configurations are Energy Star certified through testing in EPA-recognized laboratories, with the results reviewed by an independent, accredited certification organization. Visit www.energystar.gov for specific configurations listed.

BUY AMERICAN ACT

This product is assembled in the USA and meets the Buy America(n) government procurement requirements under FAR, DFARS and DOT regulations. Please refer to www.acuitybrands.com/buy-american for additional information.

Photometrics

LEDs tested to LM-80 standards. Measured by IESNA Standard LM-79-08 in an accredited lab. Lumen output shall not decrease by more than 30% over the minimum operational life of 60,000 hours.

Color appearance from luminaire to luminaire of the same type and in all configurations, shall be consistent both initially and at 60,000 hours and operate within a tolerance of <2.5 MacAdam ellipse as defined by a point at the intersection of the CCT line and the black body locus line in CIE chromaticity space.

Warranty

5-year limited warranty. This is the only warranty provided and no other statements in this specification sheet create any warranty of any kind. All other express and implied warranties are disclaimed. Complete warranty terms located at: www.acuitybrands.com/support/warranty/terms-and-conditions

Note:

Actual performance may differ as a result of end user environment and application.

All values are design or typical values, measured under laboratory conditions at 25 °C.

A+ Capable Luminaire

This item is an A+ capable luminaire, which has been designed and tested to provide consistent color appearance and out-of-the-box control capability with simple commissioning when used with Acuity Brands controls products.

All configurations of this luminaire are calibrated and tested to meet the Acuity Brands' specification for chromatic consistency - including color rendering, color fidelity and color temperature tolerance around standard CIE chromaticity coordinates.

To learn more about A+, visit www.acuitybrands.com/aplus.

Marked Spacing in Inches 25°C Ambient			
Lumen Package	Fixed Center to Center MIN	Fixture Center to Building Member MIN	Space Above Fixture
500-5000	None	None	None
6000	24	12	5
8000	36	18	11
10000			9
12000			
15000			
17500	72	36	

EVO - eldoLED Driver Default Dimming Curve			
Nomenclature	Min Dimming	Driver Dim Curve	Control Dim Curve
EZ10	10%	Linear	Linear/Logarithmic
EZ1	1%	Linear	Linear/Logarithmic
EXA1	1%	Linear	Linear/Logarithmic
EZB	<1%	Logarithmic	Linear
EDAB	<1%	Logarithmic	Linear
EXAB	<1%	Logarithmic	Linear
EDXB	<1%	Square	Linear

Marked Spacing in Inches 40°C Ambient			
Lumen Package	Fixed Center to Center MIN	Fixture Center to Building Member MIN	Space Above Fixture
5000	24	12	5
6000			
8000	48	24	9
10000			
12000			
15000			
17500	72	36	9

Marked Spacing Chicago Plenum Open Frame in Inches 25°C Ambient			
Lumen Package	Fixed Center to Center MIN	Fixture Center to Building Member MIN	Space Above Fixture
250-5000	None	None	None
6000	24	12	5
8000	36	18	11
10000			9
12000			
15000			
17500	72	36	

Marked Spacing Chicago Plenum Enclosure in Inches 25°C Ambient			
Lumen Package	Fixed Center to Center MIN	Fixture Center to Building Member MIN	Space Above Fixture
250-6000	None	None	None
8000	36	18	6
10000	48	24	3
12000			

Control Provided (note: 347V/UVOLT versions provided with 347 option selected)					
Nomenclature	Description	NLT	NLTER	NLTAIR2	NLTAIRER2
GZ10	0-10V driver dims to 10%	nPP16 D EFP	nPP16 D ER EFP	RPP20 D 24V G2	RPP20 D 24V ER G2
GZ1	0-10V driver dims to 1%	nPP16 D EFP	nPP16 D ER EFP	RPP20 D 24V G2	RPP20 D 24V ER G2
EZ10	eldoLED 0-10V ECOdrive	nPS 80 EZ	nPS 80 EZ ER	RPP20 D 24V G2	RPP20 D 24V ER G2
EZ1	eldoLED 0-10V ECOdrive	nPS 80 EZ	nPS 80 EZ ER	RPP20 D 24V G2	RPP20 D 24V ER G2
EZB	eldoLED 0-10V SOLOdrive	nPS 80 EZ	nPS 80 EZ ER	RPP20 D 24V G2	RPP20 D 24V ER G2

How to Estimate Delivered Lumens in Emergency Mode

$$\text{Delivered Lumens} = 1.25 \times P \times \text{LPW}$$

P = Output power of emergency driver. P = 10W for PS1055CP

LPW = Lumen per watt rating of the luminaire. This information is available on the ABL luminaire spec sheet.

Flangeless Installation

Gotham's flangeless option utilizes a micro-thin polymer mud ring that minimizes the amount of drywall compound required to finish the ceiling. The end result is a virtually undetectable flangeless downlight installation.

The polymer mud ring is installed independent of the of the recessed frame, therefore floating with the ceiling. This innovation minimizes any surface cracks during reflector installation, ceiling movement and any future service to the recessed frame, wiring, electronics, etc.



Partially finished mud ring, showing cross-section detail.



An EVO downlight requires only approximately 3" of plaster to finish.



EVO with flangeless trim

*Dimensions in inches [centimeters]

Aperture: 6 1/4" [15.9]

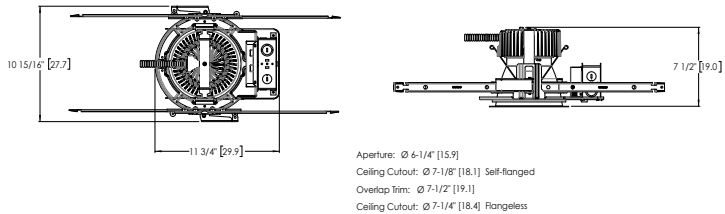
Ceiling Opening: 7 1/8" [18.1] self-flanged

Overlap Trim: 7 1/2" [19.1]

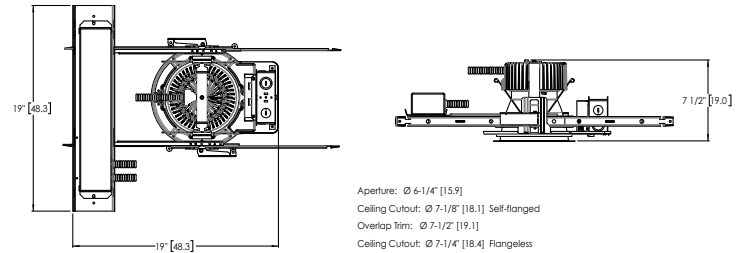
7 1/4" [18.4] flangeless

DIMENSIONAL DATA

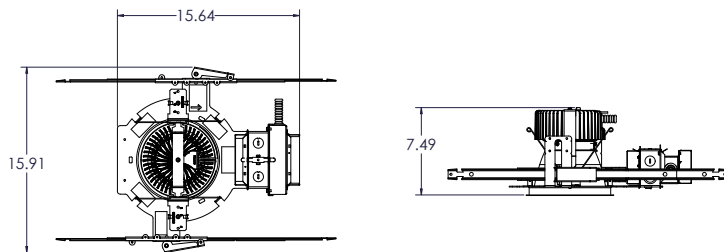
250LM-5000LM Standard



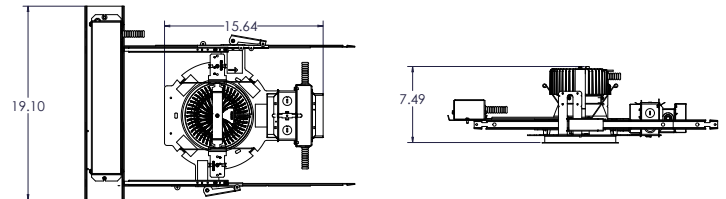
250LM-5000LM Battery Pack



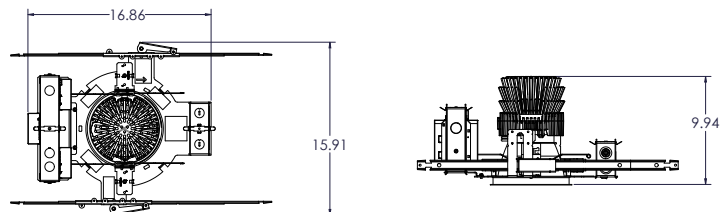
6000LM-8000LM Standard



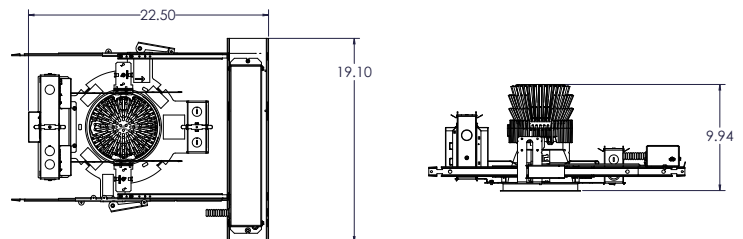
6000LM-8000LM Battery Pack



10,000LM-17,500LM Standard



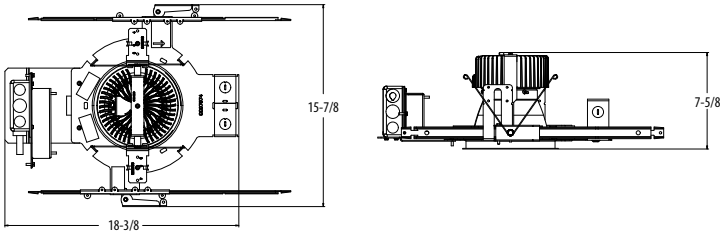
10,000LM-17,500LM Battery Pack



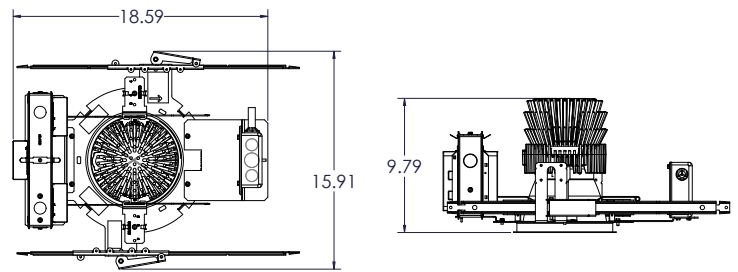
*Dimensions in inches [centimeters]

DIMENSIONAL DATA

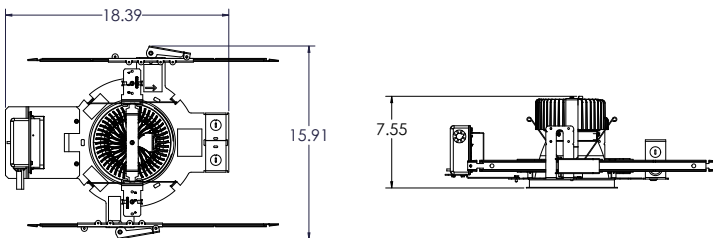
250LM-4500LM CP



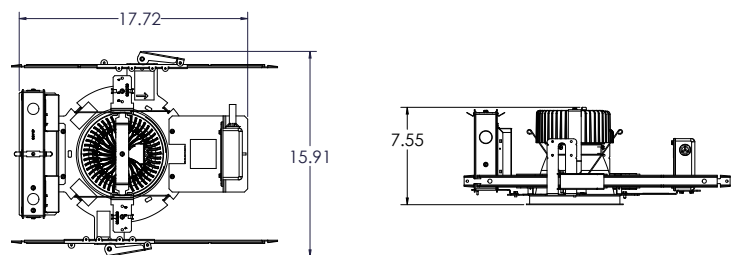
10000LM - 17,500LM Lumen Open Frame CP



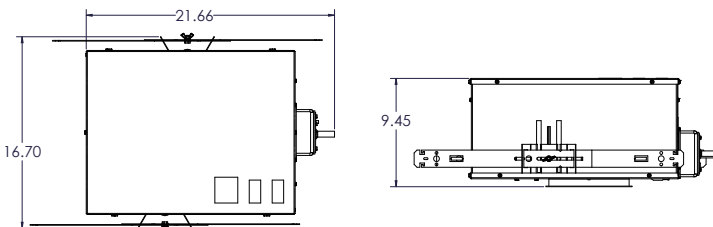
5000LM ECO/SOLO Drive Open Frame CP



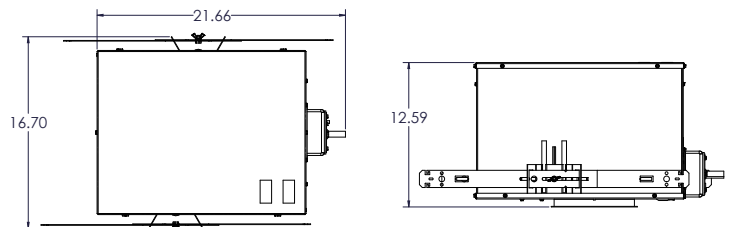
5000LM (Lutron & POWER Drive Only), 6000LM & 8000LM Open Frame CP



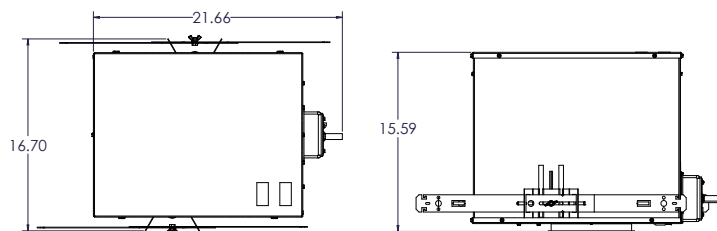
250LM - 6000LM CP Enclosed with Battery Pack and/or nLight™ Only



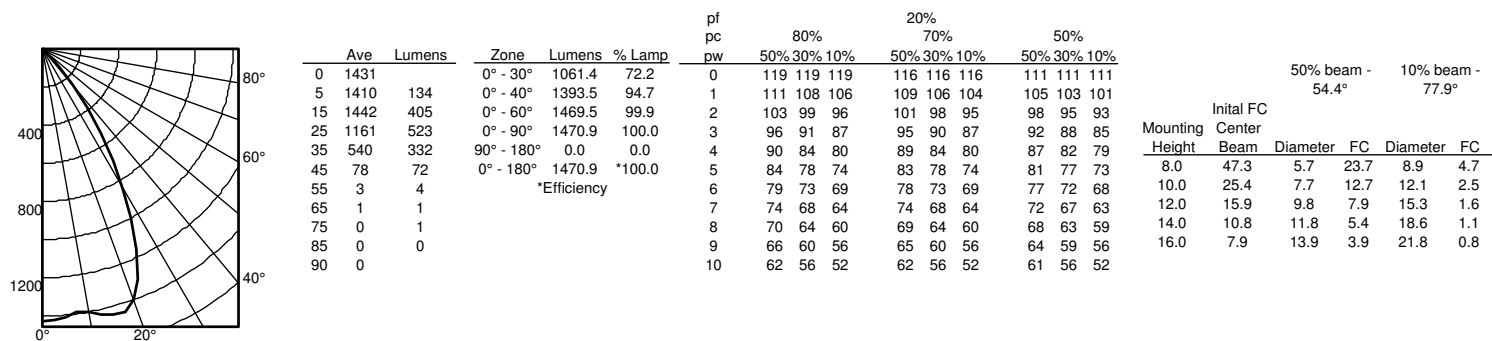
8,000LM CP Enclosed with Battery Pack and/or nLight™ Only



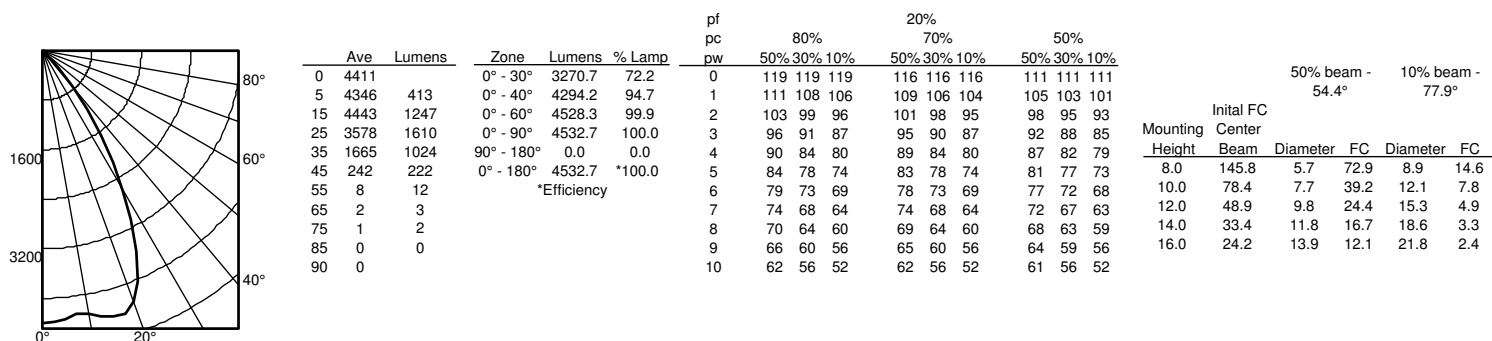
10,000LM-12,000LM CP Enclosed with Battery Pack and/or nLight™ Only



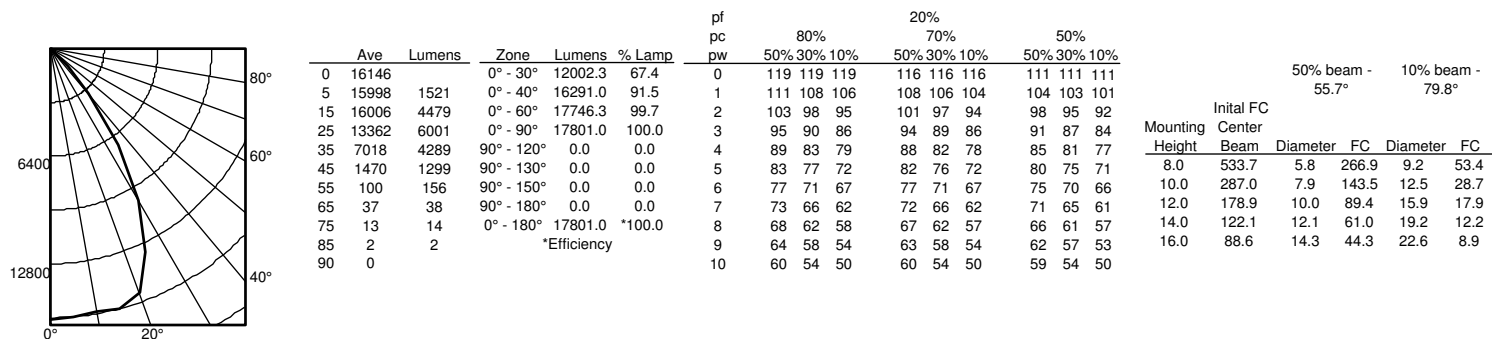
EV06 35/15 AR MWD LS INPUT WATTS: 14.7, DELIVERED LUMENS: 1471LM, LPW= 100, 1.03 S/MH, TEST NO. LTL27783P1505



EV06 35/45 AR MWD LS INPUT WATTS: 47.3, DELIVERED LUMENS: 4532.7LM, LPW= 95.8, 1.03 S/MH, TEST NO. LTL27783P1649



EV06 35/175 AR MWD LS INPUT WATTS: 175.3, DELIVERED LUMENS: 17801LM, LPW=101.5, 1.06 S/MH, TEST NO. ISF 34035P268



Lumen Output Multiplier		
CRI	CCT	Multiplier
80	2700K	0.96
	300K	1.00
	3500K	1.00
	4000K	1.01
	5000K	1.07
90	2700K	0.80
	300K	0.83
	3500K	0.85
	4000K	0.87
	5000K	0.91

Reflector Finish Multiplier	
Reflector Finish	Multiplier
LS - Specular	1
LSS - Semi Specular	0.956
WR - White	0.87
LD - Matte Diffuse	0.85
BR - Black	0.73

Distributions		
Nomenclature	Beam Angle	Field Angle
VND	30	64
ND	44	69
MD	54	82
MWD	67	89
WD	71	92

nLight® AIR is the ideal solution for retrofit or new construction spaces where adding communication wiring is cost prohibitive. The integrated nLight AIR rPP20 Power Pack is part of each EVO Luminaire ordered with the NLTAIR option. These individually addressable controls offer the ultimate in flexibility during initial setup and for space repurposing.

nLight® AIR Control Accessories

Order as separate catalog number. Visit [nLight AIR](#).

Wall Switches

Model Number	
On/Off single pole	rPODB (color) G2
On/Off two pole	rPODB 2P (color) G2
On/Off & raise/lower single pole	rPODB DX (color) G2
On/Off & raise/lower two pole	rPODB 2P DX (color) G2

nLight® AIR Control Accessories (cont.)

Occupancy Sensors (PIR/dual tech)

Model Number	
Small motion 360°, ceiling	rCMS 9 / rCMS PDT 9
Large motion 360°, ceiling	rCMS 10 / rCMS PDT 10

UL924 Sequence of Operation

The below information applies to all nLight AIR devices with an EM option.

- EM devices will remain at their high-end trim and ignore wireless lighting control commands, unless a normal-power-sensed (NPS) broadcast is received at least every 8 seconds.
- Using the CLAIRITY+ mobile app, EM devices must be associated with a group that includes a normal power sensing device to receive NPS broadcasts.
- Only non-emergency rPP20, rLSXR, rSBOR, rSDGR, and nLight AIR luminaires with version 3.4 or later firmware can provide normal power sensing for EM devices. See specification sheets for control devices and luminaires for more information on options that support normal power sensing.

nLight® The nLight® solution is a digital networked lighting control system that provides both energy savings and increased user configurability by cost effectively integrating time-based, daylight-based, sensor-based and manual lighting control schemes.

nLight® Wired Control Accessories

Order as separate catalog number. Visit [nLight](#).

Wall Switches

Model Number	
On/Off single pole	nPODM (color)
On/Off two pole	nPODM 2P (color)
On/Off & raise/lower single pole	nPOD DX (color)
On/Off & raise/lower two pole	nPODM 2P DX (color)
Graphic touchscreen	nPOD GFX (color)

Photocell Controls

Dimming	nCM ADCX
---------	----------

nLight® Wired Control Accessories (cont.)

Occupancy Sensors (PIR/dual tech)

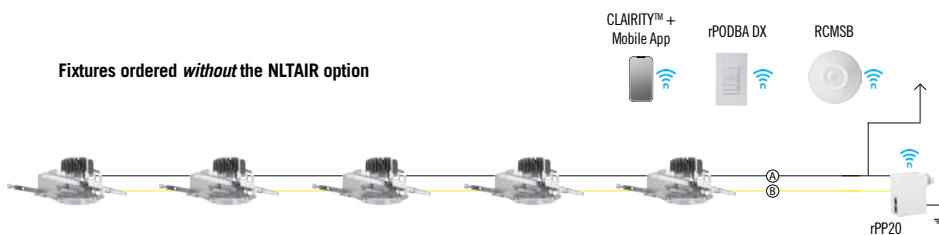
Model Number	
Small motion 360°, ceiling	nCM 9 / nCM PDT 9
Large motion 360°, ceiling	nCM 10 / nCM PDT 10
Wide View	nWV 16 / nWV PDT 16
Wall switch with raise/lower	nWSX LV DX / nWSX PDT LV DX

Cat-5 Cables (plenum rated)

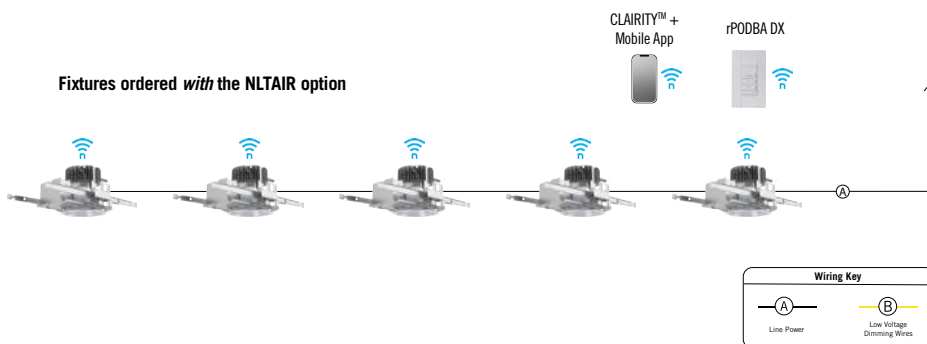
10', CAT5	CAT5 10FT J1
15', CAT5	CAT5 15FT J1

Possibilities for nLight® AIR

Fixtures ordered *without* the NLTAIR option

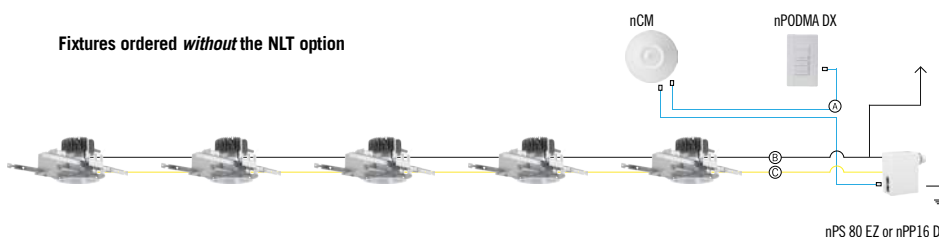


Fixtures ordered *with* the NLTAIR option

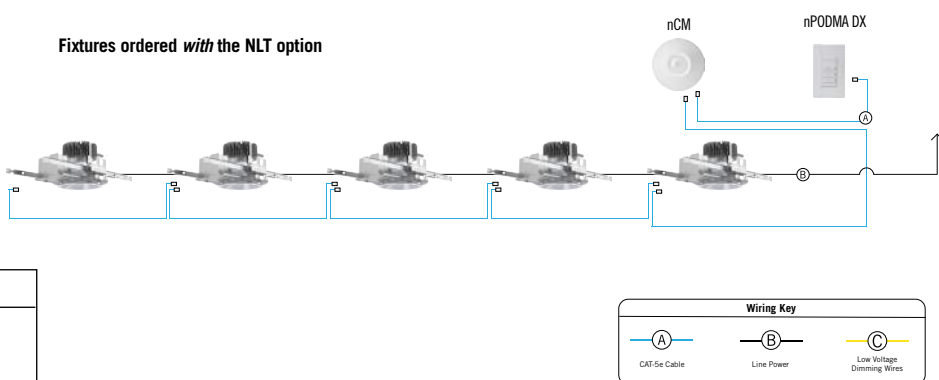


Possibilities for nLight® wired

Fixtures ordered *without* the NLT option



Fixtures ordered *with* the NLT option





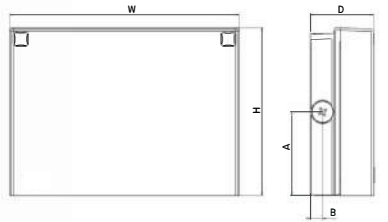
WPX LED Wall Packs



Catalog Number	
Notes	
Type	OW1

Hit the Tab key or mouse over the page to see all interactive elements.

Specifications



Front View

Side View

Luminaire	Height (H)	Width (W)	Depth (D)	Side Conduit Location		Weight
				A	B	
WPX1	8.1" (20.6 cm)	11.1" (28.3 cm)	3.2" (8.1 cm)	4.0" (10.3 cm)	0.6" (1.6 cm)	6.1 lbs (2.8kg)
WPX2	9.1" (23.1 cm)	12.3" (31.1 cm)	4.1" (10.5 cm)	4.5" (11.5 cm)	0.7" (1.7 cm)	8.2 lbs (3.7kg)
WPX3	9.5" (24.1 cm)	13.0" (33.0 cm)	5.5" (13.7 cm)	4.7" (12.0 cm)	0.7" (1.7 cm)	11.0 lbs (5.0kg)

Introduction

The WPX LED wall packs are energy-efficient, cost-effective, and aesthetically appealing solutions for both HID wall pack replacement and new construction opportunities. Available in three sizes, the WPX family delivers 1,550 to 9,200 lumens with a wide, uniform distribution.

The WPX full cut-off solutions fully cover the footprint of the HID glass wall packs that they replace, providing a neat installation and an upgraded appearance. Reliable IP66 construction and excellent LED lumen maintenance ensure a long service life. Photocell and emergency egress battery options make WPX ideal for every wall mounted lighting application.

Ordering Information

EXAMPLE: WPX2 LED 40K MVOLT DDBXD

Series	Color Temperature	Voltage	Options	Finish
WPX1 LED P1	1,550 Lumens, 11W ¹	30K 3000K	MVOLT 120V - 277V	(blank) None
WPX1 LED P2	2,900 Lumens, 24W	40K 4000K	347 347V ³	E4WH Emergency battery backup, CEC compliant (4W, 0°C min) ²
WPX2 LED	6,000 Lumens, 47W	50K 5000K	E14WC Emergency battery backup, CEC compliant (14W, -20°C min) ²	DDBXD Dark bronze
WPX3 LED	9,200 Lumens, 69W		PE Photocell ³	DWHXD White
				DBLXD Black
				Note : For other options, consult factory.

Note: The lumen output and input power shown in the ordering tree are average representations of all configuration options. Specific values are available on request.

NOTES

1. All WPX wall packs come with 6kV surge protection standard, except WPX1 LED P1 package which comes with 2.5kV surge protection standard. Add SPD6KV option to get WPX1 LED P1 with 6kV surge protection. Sample nomenclature: WPX1 LED P1 40K MVOLT SPD6KV DDBXD
2. Battery pack options only available on WPX1 and WPX2.
3. Battery pack options not available with 347V and PE options.

FEATURES & SPECIFICATIONS

INTENDED USE

The WPX LED wall packs are designed to provide a cost-effective, energy-efficient solution for the one-for-one replacement of existing HID wall packs. The WPX1, WPX2 and WPX3 are ideal for replacing up to 150W, 250W, and 400W HID luminaires respectively. WPX luminaires deliver a uniform, wide distribution. WPX is rated for -40°C to 40°C.

CONSTRUCTION

WPX feature a die-cast aluminum main body with optimal thermal management that both enhances LED efficacy and extends component life. The luminaires are IP66 rated, and sealed against moisture or environmental contaminants.

ELECTRICAL

Light engine(s) configurations consist of high-efficacy LEDs and LED lumen maintenance of L90/100,000 hours. Color temperature (CCT) options of 3000K, 4000K and 5000K with minimum CRI of 70. Electronic drivers ensure system power factor >90% and THD <20%. All luminaires have 6kV surge protection (Note: WPX1 LED P1 package comes with a standard surge protection rating of 2.5kV. It can be ordered with an optional 6kV surge protection). All photocell (PE) operate on MVOLT (120V - 277V) input.

Note: The standard WPX LED wall pack luminaires come with field-adjustable drive current feature. This feature allows tuning the output current of the LED drivers to adjust the lumen output (to dim the luminaire).

INSTALLATION

WPX can be mounted directly over a standard electrical junction box. Three 1/2 inch conduit ports on three sides allow for surface conduit wiring. A port on the back surface allows poke-through conduit wiring on surfaces that don't have an electrical junction box. Wiring can be made in the integral wiring compartment in all cases. WPX is only recommended for installations with LEDs facing downwards.

LISTINGS

CSA Certified to meet U.S. and Canadian standards. Suitable for wet locations. IP66 Rated. DesignLights Consortium® (DLC) qualified product. Not all versions of this product may be DLC qualified. Please check the DLC Qualified Products List at www.designlights.org/QPL to confirm which versions are qualified. International Dark Sky Association (IDA) Fixture Seal of Approval (FSA) is available for all products on this page utilizing 3000K color temperature only.

WARRANTY

5-year limited warranty. This is the only warranty provided and no other statements in this specification sheet create any warranty of any kind. All other express and implied warranties are disclaimed. Complete warranty terms located at: www.acuitybrands.com/CustomerResources/Terms_and_conditions.aspx.

Note: Actual performance may differ as a result of end-user environment and application. All values are design or typical values, measured under laboratory conditions at 25°C. Specifications subject to change without notice.



Performance Data

Electrical Load

Luminaire	Input Power (W)	120V	208V	240V	277V	347V
WPX1 LED P1	11W	0.09	0.05	0.05	0.04	0.03
WPX1 LED P2	24W	0.20	0.12	0.10	0.09	0.07
WPX2	47W	0.39	0.23	0.20	0.17	0.14
WPX3	69W	0.58	0.33	0.29	0.25	0.20

Projected LED Lumen Maintenance

Data references the extrapolated performance projections in a 25°C ambient, based on 6,000 hours of LED testing (tested per IESNA LM-80-08 and projected per IESNA TM-21-11).

To calculate LLF, use the lumen maintenance factor that corresponds to the desired number of operating hours below. For other lumen maintenance values, contact factory.

Operating Hours	50,000	75,000	100,000
Lumen Maintenance Factor	>0.94	>0.92	>0.90

Lumen Output

Luminaire	Color Temperature	Lumen Output
WPX1 LED P1	3000K	1,537
	4000K	1,568
	5000K	1,602
WPX1 LED P2	3000K	2,748
	4000K	2,912
	5000K	2,954
WPX2	3000K	5,719
	4000K	5,896
	5000K	6,201
WPX3	3000K	8,984
	4000K	9,269
	5000K	9,393

Lumen Ambient Temperature (LAT) Multipliers

Use these factors to determine relative lumen output for average ambient temperatures from 0-50°C (32-122°F).

Ambient	Ambient	Lumen Multiplier
0°C	32°F	1.05
5°C	41°F	1.04
10°C	50°F	1.03
15°C	59°F	1.02
20°C	68°F	1.01
25°C	77°F	1.00
30°C	86°F	0.99
35°C	95°F	0.98
40°C	104°F	0.97

HID Replacement Guide

Luminaire	Equivalent HID Lamp	WPX Input Power
WPX1 LED P1	100W	11W
WPX1 LED P2	150W	24W
WPX2	250W	47W
WPX3	400W	69W

Emergency Egress Battery Packs

The emergency battery backup is integral to the luminaire — no external housing or back box is required. The emergency battery will power the luminaire for a minimum duration of 90 minutes and deliver minimum initial output of 550 lumens. Both battery pack options are CEC compliant.

Battery Type	Minimum Temperature Rating	Power (Watts)	Controls Option	Ordering Example
Standard	0°C	4W	E4WH	WPX2 LED 40K MVOLT E4WH DDBXD
Cold Weather	-20°C	14W	E14WC	WPX2 LED 40K MVOLT E14WC DDBXD

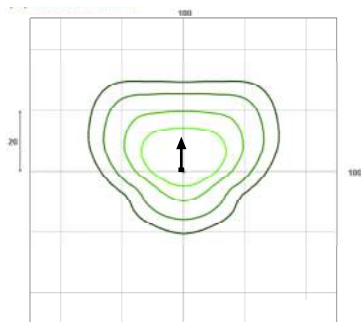
Photometric Diagrams

To see complete photometric reports or download .ies files for this product, visit the Lithonia Lighting [WPX LED](#) homepage. Tested in accordance with IESNA LM-79 and LM-80 standards

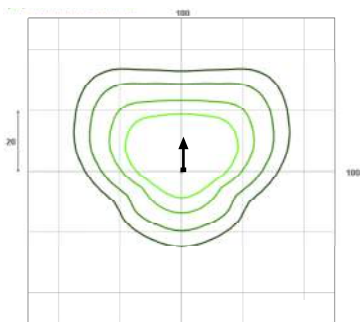
LEGEND

0.1 fc
0.2 fc
0.5 fc
1.0 fc

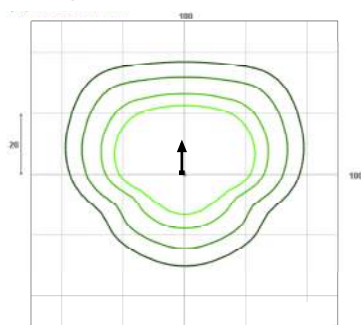
WPX1 LED P1



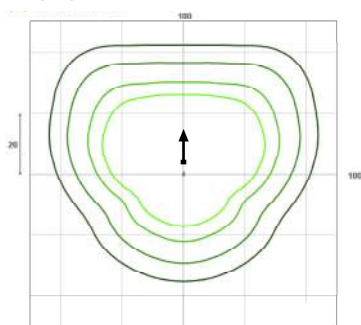
WPX1 LED P2



WPX2 LED



WPX3 LED



Mounting Height = 12 Feet.