



Wauwatosa, WI

Transportation Affairs Committee

Meeting Agenda - Final

7725 W. North Avenue
Wauwatosa, WI 53213

Tuesday, May 13, 2025

6:30 PM

Committee Room #1 and Zoom:
<https://servetosa.zoom.us/j/81144274572>,
Meeting ID: 811 4427 4572

Regular Meeting

HYBRID MEETING INFORMATION

Members of the public may observe and participate in the meeting in-person or via Zoom at the link above. To access the Zoom meeting via phone, call 1-312-626-6799 and enter the Meeting ID.

CALL TO ORDER

ROLL CALL

TRANSPORTATION AFFAIRS COMMITTEE ITEMS

1. Consideration of request from Engineering Division for a 90-day trial of 15-minute parking restrictions on the east side of 72nd Street fronting 2154 N. 72nd Street [25-0738](#)
2. Consideration of request from Engineering Division to prohibit parking the east side of 60th Street from Wisconsin Avenue to the South City Limit following completion of a 60-day trial [25-0736](#)
3. Consideration of request from Engineering Division to remove parking restrictions on the west side of 113th Street from Center Street to Clarke Street, to remove parking restrictions along the west side of 114th Street from 190-feet south of Center Street to Clarke Street, and to remove parking restrictions along the east side of 115th Street from Center Street to Clarke Street following completion of two trial periods [25-0735](#)
4. Consideration of request from Engineering Division for a 90-day trial of 15-minute parking restrictions on the east side of 70th Street from North Avenue to the alley south of North Avenue [25-0737](#)
5. Consideration of request from Engineering Division to adopt a 25 mph posted speed limit on Ludington Avenue between Milwaukee Avenue and North Avenue [25-0755](#)

ADJOURNMENT

NOTICE TO PERSONS WITH A DISABILITY

Persons with a disability who need assistance to participate in this meeting should call the City Clerk's office at (414) 479-8917 or send an email to tclerk@wauwatosa.net, with as much advance notice as possible.



Staff Report

File #: 25-0738

Agenda Date: 5/13/2025

Agenda #: 1.

Consideration of request from Engineering Division for a 90-day trial of 15-minute parking restrictions on the east side of 72nd Street fronting 2154 N. 72nd Street

Submitted by:

Michael May, PE, PTOE, RSP1

Department:

DPW - Engineering Division

A. Issue

Demonstrated need for loading/unloading of person with disabilities.

B. Background/Options

Parking is currently unrestricted along 72nd Street. An individual requested a handicap parking stall to aid in loading and unloading a person with disabilities.

Staff met one-on-one with the property owner to assess the physical condition of the property. This on-site assessment was to determine if alternatives exist that would allow for loading and unloading upon the property itself rather than from the street. Due to the layout of retaining walls along the property's narrow driveway, staff agrees that loading and unloading from the street is warranted.

Handicap parking now requires a 13-foot wide parking area, which is not feasible along 72nd. Therefore, staff worked with the property owner and is recommending a 15-minute parking trial on the east side of 72nd Street fronting 2154 N. 72nd Street. The property owner has stated support for this trial.

C. Strategic Plan (Area of Focus)

NA

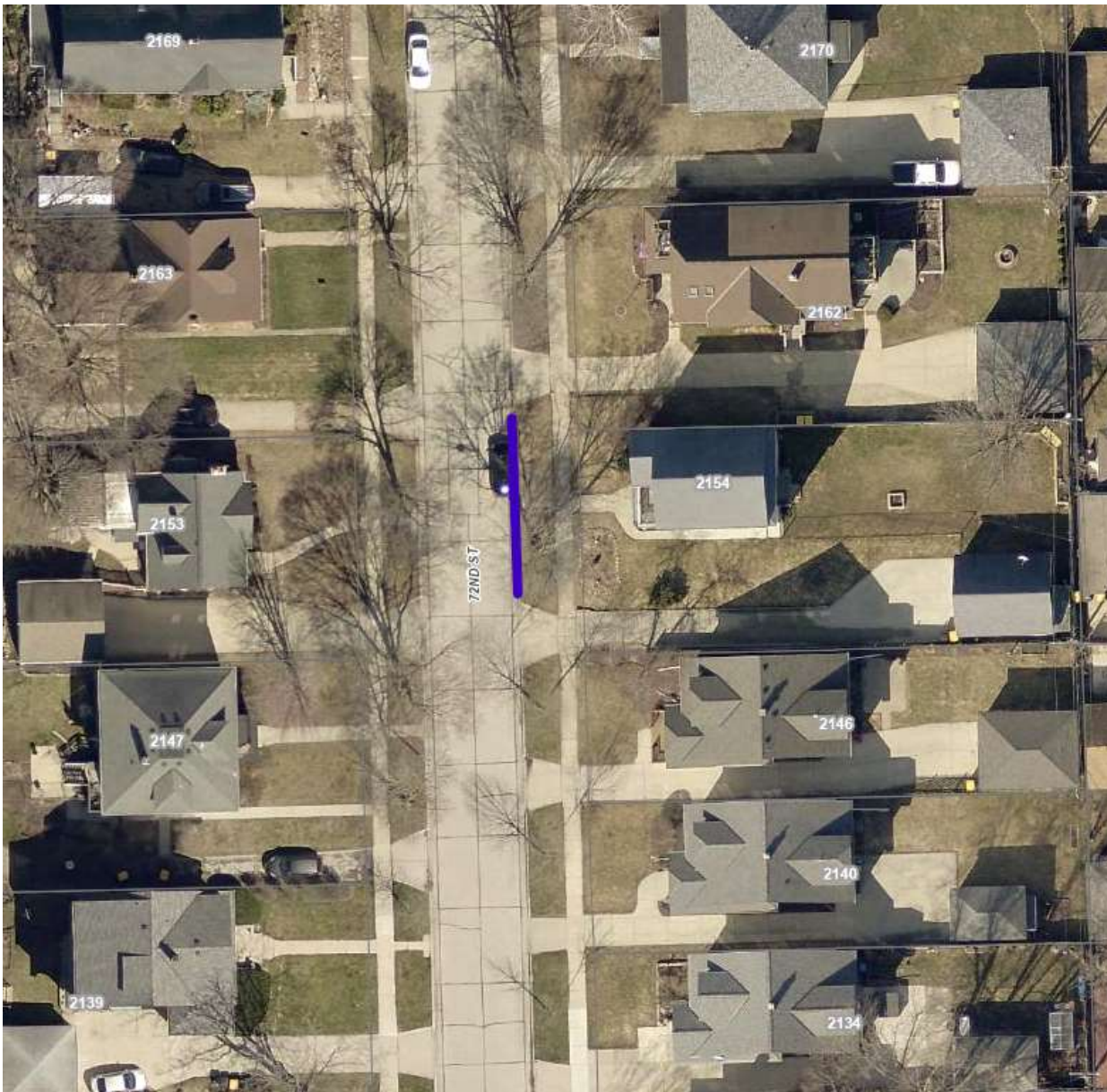
D. Fiscal Impact

Minor expenses for the installation of signs. The existing sign budget will accommodate these expenses.

E. Recommendation

Direct staff to initiate a 90-day trial of 15-minute parking restrictions on the east side of 72nd Street fronting 2154 N. 72nd Street.

Approximate Location of Proposed Parking Trial





Staff Report

File #: 25-0736

Agenda Date: 5/13/2025

Agenda #: 2.

Consideration of request from Engineering Division to prohibit parking the east side of 60th Street from Wisconsin Avenue to the South City Limit following completion of a 60-day trial

Submitted by:

Michael May, PE, PTOE, RSP1

Department:

DPW - Engineering Division

A. Issue

On-street parking during events at American Family Field and other venues impact travel and access along 60th Street

B. Background/Options

Parking is currently prohibited along the west side of 60th Street from Blue Mound Road to 142-feet north thereof (along Blue Mound Automotive), and has no signed restrictions north of this point to Wisconsin Avenue. No signed restrictions exist along the east side of 60th Street from the South City Line (north of O'Reilly Auto Parts) to Wisconsin Avenue. Residents have requested that parking be prohibited along one side of 60th Street.

60th Street is 24-feet wide. Nearby business(es) offer shuttle services to/from events at American Family Field and other venues and festival. When this happens, 60th Street is parked on both sides of the street, resulting in a narrow 8-foot wide travel lane for two-way traffic. Access to residential driveways is also greatly diminished.

A 60-day trial for parking prohibitions along the east side of 60th Street from Wisconsin Avenue to the South City Limit (see map on following page) started in February, 2025. The east side was recommended over the west side to aid in lines of sight and turning maneuvers to/from corners at Michigan Street. The 60-day trial has concluded. Staff recommends prohibiting parking the east side of 60th Street from Wisconsin Avenue to the South City Limit.

C. Strategic Plan (Area of Focus)

NA

D. Fiscal Impact

Minor expenses for the installation of signs. The existing sign budget will accommodate these expenses.

E. Recommendation

Direct staff to prepare an ordinance to prohibit parking along the west side of 60th Street from Wisconsin Avenue

to the South City Limit.

*Location of Proposed Parking Prohibitions
60th Street, Wisconsin Avenue to South City Limit*



Proposed Ordinance changes to 11.32.080 on 60th Street and Wisconsin Avenue

The Common Council of Wauwatosa do ordain as follows:

Part I. The “North 60th Street – east side” portion of the “Schedules of streets and portions” subsection of the Wauwatosa Code Section 11.32.080 is hereby amended by adding the following:

(a) From Wisconsin Avenue to South City Limit

Part II. This ordinance shall take effect on and after its date of publication.



Staff Report

File #: 25-0735

Agenda Date: 5/13/2025

Agenda #: 3.

Consideration of request from Engineering Division to remove parking restrictions on the west side of 113th Street from Center Street to Clarke Street, to remove parking restrictions along the west side of 114th Street from 190-feet south of Center Street to Clarke Street, and to remove parking restrictions along the east side of 115th Street from Center Street to Clarke Street following completion of two trial periods

Submitted by:

Michael May, PE, PTOE, RPS1

Department:

DPW - Engineering Division

A. Issue

The Transportation Affairs Committee, in response to an Alderperson Agenda Item Memo, directed a parking trial in September 2024 to ease parking restraints in the area of Wauwatosa West High School.

B. Background/Options

The Transportation Affairs Committee (TAC), at its September 2024 meeting and in response to an Alderperson Agenda Item Memo, directed staff to perform a 90-day trial to remove parking restrictions on the west side of 113th Street, west side of 114th Street, and east side of 115th Street. The first 90-day trial officially began the week of September 25th. Staff tracked parking occupancy on adjacent streets with four “before trial” and four “during trial” observations.

At the January 2025 TAC meeting, staff provided a summary of the trial results and recommended removing parking in all the aforementioned trial locations with the exception of two. Staff recommended 2-hour parking remain in the ordinance along the west side of 114th Street within the first 190-feet of Center Street, and along the east side 115th Street within the first 195-feet. These two areas were recommended to remain as 2-hour parking to aid in parent pick-up/drop-off and for school visitors. TAC directed staff to perform a trial of this layout, to further work with Wauwatosa West High School on student, parent, and faculty/staff outreach, and to report back on May 13, 2025.

The second trial began on February 17th after outreach with the high school and property owners was completed. Table 1 shows the results of the both the initial 90-day trial (“trial 1”) and the most recent trial (“trial 2”). Additionally, Table 1 shows the change in parking from the before trial to “trial 1” condition, the before trial to “trial 2” condition, and from the “trial 1” to “trial 2” condition.

Table 1
Average Observed Parked Vehicles by Street

| Location | Average Before Trial | Average During Trial 1 | Average During Trial 2 | Change Before to Trial 1 | Change Before to Trial 2 | Change Trial 1 to Trial 2 |
|-------------------------------|-------------------------|---------------------------|---------------------------|-----------------------------|-----------------------------|------------------------------|
| Center, 113th to 114th | 1 | 0 | 0 | -1 | -1 | 0 |
| Center, 114th to 115th | 5 | 6 | 6 | 1 | 1 | 0 |
| Center, 115th to 116th | 8 | 9 | 9 | 1 | 1 | 0 |
| Center, 116th to 117th | 5 | 5 | 8 | 0 | 3 | 3 |
| 113th, Center to Clarke | 1 | 1 | 6 | 0 | 5 | 5 |
| 114th, Center to Clarke | 3 | 17 | 15 | 14 | 12 | -2 |
| 115th, Center to Clarke | 4 | 18 | 16 | 14 | 12 | -2 |
| 116th, Center to Clarke | 17 | 10 | 13 | -7 | -4 | 3 |
| 117th, Center to Clarke | 1 | 1 | 3 | 0 | 2 | 2 |
| Clarke, 113th to 114th | 13 | 7 | 8 | -6 | -5 | 1 |
| Clarke, 114th to 115th | 16 | 7 | 12 | -9 | -4 | 5 |
| Clarke, 115th to 116th | 14 | 5 | 8 | -9 | -6 | 3 |
| Clarke, 116th to 117th | 0 | 0 | 0 | 0 | 0 | 0 |
| 113th, Clarke to Meinecke | 2 | 1 | 2 | -1 | 0 | 1 |
| 114th, Clarke to Meinecke | 4 | 1 | 2 | -3 | -2 | 1 |
| 115th, Clarke to Meinecke | 2 | 1 | 0 | -1 | -2 | -1 |
| Student Parking (129 spaces): | 91 | 92 | 105 | 1 | 14 | 13 |

Note: Additional parking data was collected for Trial 1 before Trial 2 started. The additional data is included in the Trial 1 data above.

The following is key takeaways from the parking data.

- 113th Street from Center to Clarke, as well as Center Street from 116th Street to 117th Street, saw negligible change from “before trial” to “trial 1” but saw increases during “trial 2”. This may be, in part, due to additional communication efforts with the high school regarding the walking distance from the school to various locations on the streets.
- 114th Street and 115th Street, from Center Street to Clarke Street, saw the largest increase in average observed parked vehicles. A slight decline occurred - about 2 vehicles each street - due to the 2-hour parking zones that remained under “trial 2”. Note that, on average, one or fewer vehicles using the 2-hour zone on 114th and 2 or fewer vehicles used the 2-hour zone on 115th during the school day. More details on pick-up/drop-off observations are included later in this report.
- 116th Street from Center Street to Clarke Street, and Clark Street from 113th to 116th Street, saw the largest decrease in average observed parked vehicles. A slight increase occurred on Clarke Street when comparing “trial 1” to “trial 2”.
- Student parking within the school property increased between “trial 1” and “trial 2”. This is expected, as additional students gain their licenses to drive as the school year progresses.
- Though not shown in Table 1, the average total parking demand - on-street plus off-street - increased by 32 vehicles between “trial 1” and “trial 2”.

In addition to observing parking occupancy, staff observed behaviors of pick-up/drop-off in the 2-hour zones on

114th Street and 115th Street during “trial 2”.

- The 2-hour zone on 114th was heavily used for student pick-up/drop-off at Whitman Middle School. It is surmised that drivers intentionally used 114th instead of 113th Street for pick-up because of the all-way stop condition at 114th Street. The zone quickly emptied just as high school students began exiting doors. The zone was also used by drivers picking-up high school students, but far less so.
- The 2-hour zone on 115th was primarily used by one or two individuals who used it to park for an extended period of time (not pick-up/drop-off). A few pull-up-and-pick-ups occurred in the zone, but it was not heavily utilized.

At the January 2025 TAC meeting, staff was asked to provide citation information for the two trials. The following information in Table 2 was provided by the Wauwatosa Police Department. Note that overnight parking citations are not included in this data. The majority of “blocking driveway” tickets were for parking within 4-feet of a driveway apron. The majority of “against signs” were for students parking in a 2-hour zone longer than 2 hours, though wrong-way parking is included in this figure.

Table 2
Number of Citations by Location and Type

| Location | Trial 1 9/24/24 to 2/16/25 (146 days) | | | Trial 2 2/17/25 to 5/6/25 (69days) | | |
|-------------------|--|--------------------------|----------------------|---------------------------------------|--------------------------|----------------------|
| | <i>Blocking Driveway</i> | <i>Blocking Xwalk/IS</i> | <i>Against Signs</i> | <i>Blocking Driveway</i> | <i>Blocking Xwalk/IS</i> | <i>Against Signs</i> |
| 113 th | -- | -- | 1 | -- | -- | -- |
| 114 th | 8 | 3 | 1 | 2 | -- | 7 |
| 115 th | 25 | 7 | 2 | 5 | 2 | 17 |
| 116 th | 6 | 1 | -- | 2 | 2 | -- |
| Center | 3 | 16 | 1 | -- | 5 | -- |
| Clarke | 1 | -- | 1 | -- | -- | -- |
| Total: | 43 | 27 | 6 | 9 | 9 | 24 |

Based on the results of the before trial, “trial 1”, and “trial 2” observations, staff finds that the 190-feet of 2-hour parking along 114th is beneficial for the pick-up/drop-off of Whitman Middle School and Wauwatosa West High School. The 2-hour zone along 115th was not well utilized and daytime visitors can make use of a 2-hour zone along 114th Street.

C. Strategic Plan (Area of Focus)

N/A

D. Fiscal Impact

Minor expenses for the installation or removal of signs.

E. Recommendation

Direct staff to prepare an ordinance to remove parking restrictions on the west side of 113th Street from Center Street to Clarke Street, to remove parking restrictions along the west side of 114th Street from 190-feet south of

Center Street to Clarke Street, and to remove parking restrictions along the east side of 115th Street from Center Street to Clarke Street following completion of two trial periods.

Parking South of Center Street with Staff Recommendation



Proposed Ordinance changes to 11.32.080 on Center Street to Clarke Street

The Common Council of Wauwatosa do ordain as follows:

Part I. The “North 113th Street - west side” portion of the “Schedules of streets and portions” subsection of the Wauwatosa Code Section 11.32.080 is hereby amended by deleting the following:

(t) on the west side of North 113th Street from Center Street to Clarke Street

Part II. The “North 114th – west side” portion of the “Schedules of streets and portions” subsection of the Wauwatosa Code Section 11.32.080 is hereby amended by changing the following from :

(vv) from W. Center Street to Clarke Street

To

(vv) from Clarke Street to 190-feet south thereof

Part III. The “North 115th Street – east side” portion of the “Schedules of streets and portions” subsection of the Wauwatosa Code Section 11.32.080 is hereby amended by deleting the following:

(vv) from W. Center Street to Clarke Street

Part IV. This ordinance shall take effect on and after its date of publication.

Parking Near Center Street

Public comments submitted via <https://engage.wauwatosa.net/parking-near-center>

February 11 – May 8, 2025

(we re-opened the survey in February after Transportation Affairs feedback)

Address: 2633 North 113th Street, Wauwatosa, Wisconsin 53226, United States

Date submitted: May 09, 2025, 07:57 AM

Category: I usually park here

Email (if provided):

Comment: The most recent configuration seems to be working as good as can be expected given the space available

Parking Near Center Street

Public comments submitted via <https://engage.wauwatosa.net/parking-near-center>

February 11 – May 8, 2025

(we re-opened the survey in February after Transportation Affairs feedback)

Address: 2660 North 116th Street, Wauwatosa, Wisconsin 53226, United States

Date submitted: May 08, 2025, 01:15 PM

Category: I usually park here

Email (if provided):

Comment: While it is understandable that parking is an issue for residents who live near the school there are obviously more students who drive than the amount of parking spots. Students have to get to school and if they are worried about getting a parking ticket in order for them to get an education that is extremely unfair.

Parking Near Center Street

Public comments submitted via <https://engage.wauwatosa.net/parking-near-center>

February 11 – May 8, 2025

(we re-opened the survey in February after Transportation Affairs feedback)

Address: 11506 West Clarke Street, Wauwatosa, Wisconsin 53226, United States

Date submitted: May 08, 2025, 09:40 AM

Category: I usually park here

Email (if provided):

Comment: It is difficult to find close parking, and if the city were to change it to 2-hour parking it would make it very difficult. I would have to walk farther or get to school even earlier.

Parking Near Center Street

Public comments submitted via <https://engage.wauwatosa.net/parking-near-center>

February 11 – May 8, 2025

(we re-opened the survey in February after Transportation Affairs feedback)

Address: 2675 North 113th Street, Wauwatosa, Wisconsin 53226, United States

Date submitted: May 08, 2025, 09:07 AM

Category: I usually park here

Email (if provided): leeja2026@wauwtosa.k12.wi.us

Comment: almost never anywhere to park

Parking Near Center Street

Public comments submitted via <https://engage.wauwatosa.net/parking-near-center>

February 11 – May 8, 2025

(we re-opened the survey in February after Transportation Affairs feedback)

Address: 2672 North 115th Street, Wauwatosa, Wisconsin 53226, United States

Date submitted: May 08, 2025, 08:09 AM

Category: I usually park here

Email (if provided):

Comment: The hardest part about coming down 115 towards West is avoiding the pedestrians out in the middle of the street because there are no sidewalks! It would also be nice if there was a 20-30 foot no parking zone where I placed my marker so that drop off would be more safe. Also, it would be nice to have a crossing guard at this intersection because I always hold my breath while my student crosses because people driving on Center don't even care if someone is in the crosswalk.

Parking Near Center Street

Public comments submitted via <https://engage.wauwatosa.net/parking-near-center>

February 11 – May 8, 2025

(we re-opened the survey in February after Transportation Affairs feedback)

Address: 11421 West Center Street, Wauwatosa, Wisconsin 53222, United States

Date submitted: May 08, 2025, 07:57 AM

Category: I usually park here

Email (if provided):

Comment: We need more parking spots on the streets closer to the school, the 2 hour spots have little to no use, and no one can park close enough.

Parking Near Center Street

Public comments submitted via <https://engage.wauwatosa.net/parking-near-center>

February 11 – May 8, 2025

(we re-opened the survey in February after Transportation Affairs feedback)

Address: 11600 West Center Street, Wauwatosa, Wisconsin 53222, United States

Date submitted: May 07, 2025, 03:09 PM

Category: I usually park here

Email (if provided): blankingflea1@gmail.com

Comment: The drivers parking on center street by Whitman Middle School create a huge problem arriving and leaving during the day when it is illegal with many no parking signs, however, there is nothing being done about it. It is tight and leaves me in many situations that are inches away to an accident. The drivers also parking on the street on the school side of center of Tosa West make it very difficult to turn into the parking lot in the morning, causing long delays and more traffic.

Parking Near Center Street

Public comments submitted via <https://engage.wauwatosa.net/parking-near-center>

February 11 – May 8, 2025

(we re-opened the survey in February after Transportation Affairs feedback)

Address: 2623 North 114th Street, Wauwatosa, Wisconsin 53226, United States

Date submitted: May 05, 2025, 09:33 AM

Category: I usually park here

Email (if provided):

Comment: So today city sanitation came by with street cleaners. I'm on 114 th. Guess which side did not get cleaned? Why are we being treated like second class citizens? I pay city. Taxes AND school tax.

Parking Near Center Street

Public comments submitted via <https://engage.wauwatosa.net/parking-near-center>

February 11 – May 8, 2025

(we re-opened the survey in February after Transportation Affairs feedback)

Address: 2623 North 114th Street, Wauwatosa, Wisconsin 53226, United States

Date submitted: Apr 22, 2025, 07:47 AM

Category: I usually park here

Email (if provided): rohde.gregory@att.net

Comment: I oppose the all day parking. It has not eased the congestion on Clark. Has only made traffic worse. Alternative ideas for parking need to be explored, I've been here over 32 years and have never experienced this mess.

Parking Near Center Street

Public comments submitted via <https://engage.wauwatosa.net/parking-near-center>

February 11 – May 8, 2025

(we re-opened the survey in February after Transportation Affairs feedback)

Address: 2672 North 115th Street, Wauwatosa, Wisconsin 53226, United States

Date submitted: Apr 06, 2025, 12:28 PM

Category: I usually park here

Email (if provided):

Comment: As a long time resident on the corner of 115th and Center we are in favor of the two hour limit - a lot of times cars are parked so they are hanging over our driveway

Parking Near Center Street

Public comments submitted via <https://engage.wauwatosa.net/parking-near-center>

February 11 – May 8, 2025

(we re-opened the survey in February after Transportation Affairs feedback)

Address: 2648 North 115th Street, Wauwatosa, Wisconsin 53226, United States

Date submitted: Apr 01, 2025, 07:23 AM

Category: I usually park here

Email (if provided):

Comment: We need sidewalks.

Parking Near Center Street

Public comments submitted via <https://engage.wauwatosa.net/parking-near-center>

February 11 – May 8, 2025

(we re-opened the survey in February after Transportation Affairs feedback)

Address: 2656 North 114th Street, Wauwatosa, Wisconsin 53226, United States

Date submitted: Mar 12, 2025, 05:31 PM

Category: I usually park here

Email (if provided): onebfrese@gmail.com

Comment: Strongly against any change in parking restrictions. I would move to change to NO parking at all!!!! THIS IS THE FIRST STEP TO YOU PUTTING IN SIDEWALKS. STOP MESSING WITH OUR NEIGHBORHOOD!!!

I didn't put in a new driveway for the purpose of a public U-Turn. Getting ridiculous!! WHO IS GOING TO CLEAN THE OIL DRIPS OFF MY DRIVEWAY??

Traffic has increased. I am tired of picking the garbage in my yard and street left by students. Simply trying to get out of my driveway is a pain. Silly!!!! This isn't an obstacle course!!

STOP MESSING WITH OUR NEIGHBORHOOD!!!! THE SCHOOL DOES NOT RUN OUR LIVES. TELL PEOPLE TO RIDE BIKES OR CARPOOL!!!

THIS ISN'T OUR PROBLEM!! YOU HAVE A PARKING LOT ALREADY. THIS HASN'T BEEN A PROBLEM TILL YOU MADE IT ONE. NO CHANGES OR CHANGE TO NO PARKING AT ANYTIME.

NEXT IS SIDEWALKS!! THIS IS THE FIRST STEP TO YOU PUTTING IN SIDEWALKS.

NO EXTENSIONS! NO CHANGES

Parking Near Center Street

Public comments submitted via <https://engage.wauwatosa.net/parking-near-center>

February 11 – May 8, 2025

(we re-opened the survey in February after Transportation Affairs feedback)

Address: 11403 West Center Street, Wauwatosa, Wisconsin 53222, United States

Date submitted: Mar 03, 2025, 03:56 PM

Category: I usually park here

Email (if provided): arleen.bakula@gmail.com

Comment: I saw a lot of student comments, and you need to make sure they are aware that the residents are not the ones complaining.

Additionally, I had left a comment last week, about my lot, being a possible pick up drop off spot and after reconsidering, I do not believe that is a viable option, however, I still think you could make the corner of 112th a drop off/pick up spot. Thank you.

Parking Near Center Street

Public comments submitted via <https://engage.wauwatosa.net/parking-near-center>

February 11 – May 8, 2025

(we re-opened the survey in February after Transportation Affairs feedback)

Address: 11403 West Center Street, Wauwatosa, Wisconsin 53222, United States

Date submitted: Feb 24, 2025, 11:44 AM

Category: I usually park here

Email (if provided): arleen.bakula@gmail.com

Comment: I am in complete agreement with all day parking on the west side of 113th, 114th and the east side of 115th.

I have previously made the comment of no parking on the south side of Center St., as the cars are blocking our mailboxes, which makes it difficult for the postman to deliver our mail. Additionally, there have been several comments about only being able to park on one side of Clarke street. With cars parked on both sides of Clarke street, it has become a hazard for cars & pedestrians

Who owns the land on the corner of 112th? Can that lot be turned into parking, and/or a drop off/pick up spot?

Feel free to buy my property on the corner of 114th and Center street and turn it into a pick up/drop off; similar to the cell phone parking at the airport. You can make it look attractive by adding some shrubs benches etc.

Thank you.

Parking Near Center Street

Public comments submitted via <https://engage.wauwatosa.net/parking-near-center>

February 11 – May 8, 2025

(we re-opened the survey in February after Transportation Affairs feedback)

Address: 2644 North 114th Street, Wauwatosa, Wisconsin 53226, United States

Date submitted: Feb 23, 2025, 01:48 PM

Category: I usually park here

Email (if provided): schmitt_3@sbcglobal.net

Comment: 114th street is convenient for pick up because of the crosswalk at that intersection. All-day parking on that street would make that much more congested.

Parking Near Center Street

Public comments submitted via <https://engage.wauwatosa.net/parking-near-center>

February 11 – May 8, 2025

(we re-opened the survey in February after Transportation Affairs feedback)

Address: 11400 West Center Street, Wauwatosa, Wisconsin 53222, United States

Date submitted: Feb 23, 2025, 01:14 PM

Category: I usually park here

Email (if provided): janowski_jennifer@yahoo.com

Comment: There needs to be a 1-way flow of traffic on Center Street between Whitman and West/Eisenhower and in/out of the parking lots. There also needs to be traffic cops to move people along. It took me over 15 minutes to get out of the parking lot at West last Wednesday!

Parking Near Center Street

Public comments submitted via <https://engage.wauwatosa.net/parking-near-center>

February 11 – May 8, 2025

(we re-opened the survey in February after Transportation Affairs feedback)

Address: 2610 North 115th Street, Wauwatosa, Wisconsin 53226, United States

Date submitted: Feb 23, 2025, 09:14 AM

Category: I usually park here

Email (if provided):

Comment: I am a student and received a parking ticket this week for \$30 in a space that I have parked the whole school year. I am really upset because there is no new signage up and when I tried to contest the ticket I was declined. I think this information should have been better communicated to the students since it is students that are parking there and the students that are least likely to afford these tickets.

Parking Near Center Street

Public comments submitted via <https://engage.wauwatosa.net/parking-near-center>

February 11 – May 8, 2025

(we re-opened the survey in February after Transportation Affairs feedback)

Address: 2633 North 115th Street, Wauwatosa, Wisconsin 53226, United States

Date submitted: Feb 22, 2025, 09:44 AM

Category: I usually park here

Email (if provided):

Comment: Street parking is public parking. Residents in this area should move on from this NIMBY mindset. You live in a city, not an unincorporated gravel road community. There are no busses, and students have cars. Ticketing a student's car that is sitting in a high school class seems like backwoods logic to me. They have enough to worry about. Consider moving to a quieter street in Tosa. Or, get a hobby that doesn't involve you peering out your window at the beginning or end of the school day.

Parking Near Center Street

Public comments submitted via <https://engage.wauwatosa.net/parking-near-center>

February 11 – May 8, 2025

(we re-opened the survey in February after Transportation Affairs feedback)

Address: 2450 North Mayfair Road, Wauwatosa, Wisconsin 53226, United States

Date submitted: Feb 19, 2025, 08:25 PM

Category: I usually park here

Email (if provided):

Comment: We do not have buses in Tosa, there is inadequate lot parking, so street parking is necessary for the kids to get to and from school. This appears to me to be an effort by the city to collect more revenue from parking tickets.

Parking Near Center Street

Public comments submitted via <https://engage.wauwatosa.net/parking-near-center>

February 11 – May 8, 2025

(we re-opened the survey in February after Transportation Affairs feedback)

Address: 2648 North 115th Street, Wauwatosa, Wisconsin 53226, United States

Date submitted: Feb 18, 2025, 11:43 AM

Category: I usually park here

Email (if provided): jdeschane60@gmail.com

Comment: The February 17th change does NOTHING for the parking concerns. Residents negatively affected by the previous change & have filed complaints, live more than 200' from Center. Students still don't know parking restrictions. The Feb 17th change is equivalent to giving everyone a participant trophy! Yes, changes were made by the Transportation Affairs Committee, but it does not address the problems. Once again I ask, do the people making these decisions live in this neighborhood?

The discussion on May 13th is useless for appropriate changes to be made this year, as the school year will be over shortly afterwards.

Parking Near Center Street

Public comments submitted via <https://engage.wauwatosa.net/parking-near-center>

February 11 – May 8, 2025

(we re-opened the survey in February after Transportation Affairs feedback)

Address: 11421 West Center Street, Wauwatosa, Wisconsin 53222, United States

Date submitted: Feb 18, 2025, 10:37 AM

Category: I usually park here

Email (if provided): jamesonmke@gmail.com

Comment: add more stop signs

Parking Near Center Street

Public comments submitted via <https://engage.wauwatosa.net/parking-near-center>

February 11 – May 8, 2025

(we re-opened the survey in February after Transportation Affairs feedback)

Address: 2626 North 115th Street, Wauwatosa, Wisconsin 53226, United States

Date submitted: Feb 16, 2025, 08:29 PM

Category: I usually park here

Email (if provided):

Comment: I witnessed through my own window a car accident that happened during rush hour in the corner of 115 and Clarke. I can't understand why there can't be any more regulations in the parking on resident areas. It is crazy to have that many people walking parking and trying to drive at the same time, not to mention the danger of pedestrian students and homeowners specially in these streets with no sidewalks. Please find another solution

Parking Near Center Street

Public comments submitted via <https://engage.wauwatosa.net/parking-near-center>

February 11 – May 8, 2025

(we re-opened the survey in February after Transportation Affairs feedback)

Address: 11421 West Center Street, Wauwatosa, Wisconsin 53222, United States

Date submitted: Feb 15, 2025, 09:32 PM

Category: I usually park here

Email (if provided): laelz@powellfamilywi.com

Comment: I dont think the streets are wide enough to allow parking on both sides of the streets since there are no sidewalks. I also think managing the flow is more important than changing where parking is allowed. Perhaps if Center was one-way only (east-west) and the entrance closest to the school was entry only with eisenhower the only exit, the flow would be better. Perhaps your AP computer science class could work with AI to model the best flow of traffic prior to the meeting.

Parking Near Center Street

Public comments submitted via <https://engage.wauwatosa.net/parking-near-center>

February 11 – May 8, 2025

(we re-opened the survey in February after Transportation Affairs feedback)

Address: 11506 West Clarke Street, Wauwatosa, Wisconsin 53226, United States

Date submitted: Feb 14, 2025, 05:53 PM

Category: I usually park here

Email (if provided): pjvolley@yahoo.com

Comment: We like the options for parking on 114th and 115th street as it helps relieve the crowding on Clarke. When cars park on both sides of Clarke, it is basically down to one lane of traffic.

Parking Near Center Street

Public comments submitted via <https://engage.wauwatosa.net/parking-near-center>

February 11 – May 8, 2025

(we re-opened the survey in February after Transportation Affairs feedback)

Address: 2642 North 116th Street, Wauwatosa, Wisconsin 53226, United States

Date submitted: Feb 14, 2025, 03:38 PM

Category: I usually park here

Email (if provided):

Comment: There needs to be police presence during pick up and drop off times for schools along center street. People are doing u-turns on center, treating center as a two lane road in each direction from Whitman to Eisenhower and disregarding stop signs and cross walks. The crossing guards are doing the best they can to keep kids safe, but it's only a matter of time before a major incident occurs. If drivers are ticketed, we may see a decrease in the unsafe driving behaviors we see on center.

Parking Near Center Street

Public comments submitted via <https://engage.wauwatosa.net/parking-near-center>

February 11 – May 8, 2025

(we re-opened the survey in February after Transportation Affairs feedback)

Address: 2450 North 117th Street, Wauwatosa, Wisconsin 53226, United States

Date submitted: Feb 14, 2025, 01:19 PM

Category: I usually park here

Email (if provided): schmidlo2026@wauwatosa.k12.wi.us

Comment: The people living in those neighborhoods chose to buy the houses knowing they were right next to a high school where students would need to drive and park everyday. If you block off parking in specific areas, students are still going to have to park somewhere, so this “solution” would really just crowd parking in different areas of the neighborhood making it more inconvenient for both students and the residents living over there. Not only that, but we don’t have any bussing systems, so transportation is already a problem as is, therefore blocking off the parking makes that problem even worse. Using the space as a drop off spot rather than parking means cars constantly moving in and out, creating a danger for students walking from their far away parking spots if they aren’t seen by drivers - creating even more chaos than we already have.

Parking Near Center Street

Public comments submitted via <https://engage.wauwatosa.net/parking-near-center>

February 11 – May 8, 2025

(we re-opened the survey in February after Transportation Affairs feedback)

Address: 2647 North 114th Street, Wauwatosa, Wisconsin 53226, United States

Date submitted: Feb 14, 2025, 01:05 PM

Category: I usually park here

Email (if provided):

Comment: The people in the houses by the school should know what comes with living by the school which includes the school traffic. by moving the parking area just causes other home owners to get mad. the home owners should get it together.

Parking Near Center Street

Public comments submitted via <https://engage.wauwatosa.net/parking-near-center>

February 11 – May 8, 2025

(we re-opened the survey in February after Transportation Affairs feedback)

Address: 11519 West Center Street, Wauwatosa, Wisconsin 53222, United States

Date submitted: Feb 14, 2025, 11:41 AM

Category: I usually park here

Email (if provided): coraggiocameron@gmail.com

Comment: High schoolers can walk, don't feel like you have to overthink this :)

Parking Near Center Street

Public comments submitted via <https://engage.wauwatosa.net/parking-near-center>

February 11 – May 8, 2025

(we re-opened the survey in February after Transportation Affairs feedback)

Address: 11609 West Center Street, Wauwatosa, Wisconsin 53222, United States

Date submitted: Feb 14, 2025, 10:17 AM

Category: I usually park here

Email (if provided):

Comment: There is no general point to having 2-hour parking on the streets. It wouldn't allow kids to park and go to school all day as they would have to move their cars.

Parking Near Center Street

Public comments submitted via <https://engage.wauwatosa.net/parking-near-center>

February 11 – May 8, 2025

(we re-opened the survey in February after Transportation Affairs feedback)

Address: 11424 West Clarke Street, Wauwatosa, Wisconsin 53226, United States

Date submitted: Feb 14, 2025, 10:13 AM

Category: I usually park here

Email (if provided): angeloar1206@gmail.com

Comment: I think it's more reasonable to have an all day parking or parking for school hours. Not many students are parked for 2 hours or less.

Parking Near Center Street

Public comments submitted via <https://engage.wauwatosa.net/parking-near-center>

February 11 – May 8, 2025

(we re-opened the survey in February after Transportation Affairs feedback)

Address: 2636 North 115th Street, Wauwatosa, Wisconsin 53226, United States

Date submitted: Feb 14, 2025, 10:00 AM

Category: I usually park here

Email (if provided): deckerma2026@wauwatosa.k12.wi.us

Comment: Switching this parking to just 2 hours, at least to me, seems pointless, and serves only to disadvantage the countless students who use these streets to get to school. Removing this parking drastically decreases the amount of space for students to get to school, reducing the access for students to even get to school. Students aren't able to leave school early just to switch their parking space, and considering the vast majority of people who park on this spot are West High School students, this parking space will simply just go to waste.

Parking Near Center Street

Public comments submitted via <https://engage.wauwatosa.net/parking-near-center>

February 11 – May 8, 2025

(we re-opened the survey in February after Transportation Affairs feedback)

Address: 2618 North 114th Street, Wauwatosa, Wisconsin 53226, United States

Date submitted: Feb 14, 2025, 09:41 AM

Category: I usually park here

Email (if provided): fletchma2026@wauwatosa.k12.wi.us

Comment: we shouldn't get as many tickets for parking in the street when there isn't enough room in the parking lot of the school itself.

Parking Near Center Street

Public comments submitted via <https://engage.wauwatosa.net/parking-near-center>

February 11 – May 8, 2025

(we re-opened the survey in February after Transportation Affairs feedback)

Address: 2614 North 115th Street, Wauwatosa, Wisconsin 53226, United States

Date submitted: Feb 14, 2025, 09:32 AM

Category: I usually park here

Email (if provided):

Comment: People get so many tickets here, there so little places to park if you donâ€™t have a parking ticket



Near Center Street

PARKING SURVEY



There are temporary changes to parking limits near Center Street starting February 17. Learn more and give your feedback.



See equal distant parking spots



Take a 3-minute survey



Attend a meeting in May 2025

engage.wauwatosa.net/parking-near-center

Michael May

From: Golla, Corey <gollaco@wauwatosa.k12.wi.us>
Sent: Friday, February 14, 2025 2:56 PM
To: Michael May
Subject: [External] Re: Parking Trial - Survey & Key Points

Thank you. The information went out to all Juniors and Seniors. It is in this week's newsletter and will continue to run for several weeks. The surveys and QR code are hanging near our exit where students check in and out for open campus.

On Fri, Feb 14, 2025 at 11:06 AM Michael May <mmay@wauwatosa.net> wrote:

Good morning, Principal Golla,

As a reminder, the parking signs will change on 114th and 115th on Monday ahead of classes resuming on Tuesday. The parking checkers may be out on Tuesday to enforce.

So that we aware, please let us know if/when you are able to share a direct email(s) directly with the parents, students, and faculty/staff. We hope the key points flyer with QR code can be posted in the school too.

Note that letters were mailed by the City to residents on Wednesday and should have begun hitting mailboxes yesterday or today.

Thank you for your help, and have a relaxing weekend,

Mike

Michael May, PE, PTOE, RSP1
Senior Civil Engineer – Traffic & Transportation

City of Wauwatosa

7725 W. North Avenue

Wauwatosa, WI 53213

General: 414-479-8900

Direct: 414-479-8930

From: Michael May
Sent: Tuesday, February 11, 2025 12:22 PM
To: 'gollaco@wauwatosa.k12.wi.us' <gollaco@wauwatosa.k12.wi.us>
Cc: Mike Morgan <mmorgan@wauwatosa.net>; Amanda Fuerst <afuerst@wauwatosa.net>; Jason Wilke <jwilke@wauwatosa.net>; David Simpson <dsimpson@wauwatosa.net>; Eva Ennamorato <eennamorato@wauwatosa.net>
Subject: Parking Trial - Survey & Key Points
Importance: High

Good Afternoon, Principal Golla,

As we discussed last week, attached please find a parking survey one-pager that can be posted/shared at your discretion. Top talking points as you communicate this with your students/parents/teachers/visitors via email, student announcements, etc. are below:

- The City of Wauwatosa is working to balance the use of streets for on-street parking and pick-up/drop-off in the Center Street area of Wauwatosa West High School.
- A revised parking trial begins Monday, February 17th that will allow unrestricted parking along the west side of 113th Street from Center Street to Clark Street, along the west side of 114th Street from 200-feet south of Center Street to Clarke Street, and along the east side of 115th Street from 200-feet south of Center Street to Clarke Street. *The first 200-feet on the west side of 114th Street and east side of 115th Street, south of Center Street, will be reincorporated as a 2-hour parking zone.*
- Visit <https://engage.wauwatosa.net/parking-near-center> and take a 3 minute survey so the City can understand *your* needs! This link includes maps of on-street parking and equal walking distances from the main entrance, as well as notification of an upcoming meeting.

Thank you for your help. Ideally, this information will be shared with everyone in the Tosa West community before the upcoming three-day weekend, and/or again before Tuesday when classes are back in session.

Sincerely,

Mike

Cc: Ald. Mike Morgan, District 7

Ald. Amanda Fuerst, District 7

Ald. Jason Wilke, District 8

David Simpson, Director of Public Works

Eva Ennamorato, Communications Manager

Michael May, PE, PTOE, RSP1

Senior Civil Engineer – Traffic & Transportation

City of Wauwatosa

7725 W. North Avenue

Wauwatosa, WI 53213

General: 414-479-8900

Direct: 414-479-8930

mmay@wauwatosa.net

--

Corey Golla

Principal

Wauwatosa West High School

phone (414) 773-3010 address 11400 W. Center St, Wauwatosa, WI 53222

web <https://www.wauwatosa.k12.wi.us/West> social @twttrojans

Confidentiality Notice:

This email message, including any attachments, is for the sole use of the intended recipient(s) and may contain confidential and/or privileged information. If you are not the intended recipient(s), you are hereby notified that any dissemination, unauthorized review, use, disclosure or distribution of this email and any materials contained in any attachment is prohibited.

If you receive this message in error, or are not the intended recipients(s), please immediately notify the sender by email and destroy all copies of the original message, including attachments.

Michael May

From: Golla, Corey <gollaco@wauwatosa.k12.wi.us>
Sent: Wednesday, May 7, 2025 3:21 PM
To: Michael May
Subject: [External] Re: FW: Parking Trial - Survey & Key Points

Michael,

All of this information and the survey has been sent to all students approaching, or currently of driving age. It will also be in my Friday newsletter to all families.

Thank you for your partnership and the advocacy for our school.

On Wed, May 7, 2025 at 11:37 AM Michael May <mmay@wauwatosa.net> wrote:

Good morning, Corey,

A reminder that the matter of parking restrictions on 113th, 114th, and 115th will be before the Transportation Affairs Committee on Tuesday, May 13th, at 6:30pm at City Hall. If you would be so kind to remind students, parents, and faculty of the meeting date and the ability to share their comments via the survey link below, it is greatly appreciated. The flyer attached is still valid (QR code, etc.).

Talking points from our last discussion on the matter are below.

Please let me know if you have any questions – I appreciate working with you on these matters in and around the campus.

Mike

Michael May, PE, PTOE, RSP1
Senior Civil Engineer – Traffic & Transportation

City of Wauwatosa

7725 W. North Avenue

Wauwatosa, WI 53213

General: 414-479-8900

Direct: 414-479-8930

mmay@wauwatosa.net

From: Michael May

Sent: Tuesday, February 11, 2025 12:22 PM

To: 'gollaco@wauwatosa.k12.wi.us' <gollaco@wauwatosa.k12.wi.us>

Cc: Mike Morgan <mmorgan@wauwatosa.net>; Amanda Fuerst <afuerst@wauwatosa.net>; Jason Wilke <jwilke@wauwatosa.net>; David Simpson <dsimpson@wauwatosa.net>; Eva Ennamorato <eenamorado@wauwatosa.net>

Subject: Parking Trial - Survey & Key Points

Importance: High

Good Afternoon, Principal Golla,

As we discussed last week, attached please find a parking survey one-pager that can be posted/shared at your discretion. Top talking points as you communicate this with your students/parents/teachers/visitors via email, student announcements, etc. are below:

- The City of Wauwatosa is working to balance the use of streets for on-street parking and pick-up/drop-off in the Center Street area of Wauwatosa West High School.
- A revised parking trial begins Monday, February 17th that will allow unrestricted parking along the west side of 113th Street from Center Street to Clark Street, along the west side of 114th Street from 200-feet south of Center Street to Clarke Street, and along the east side of 115th Street from 200-feet south of Center Street to Clarke Street. *The first 200-feet on the west side of 114th Street and east side of 115th Street, south of Center Street, will be reincorporated as a 2-hour parking zone.*
- Visit <https://engage.wauwatosa.net/parking-near-center> and take a 3 minute survey so the City can understand *your* needs! This link includes maps of on-street parking and equal walking distances from the main entrance, as well as notification of an upcoming meeting.

Thank you for your help. Ideally, this information will be shared with everyone in the Tosa West community before the upcoming three-day weekend, and/or again before Tuesday when classes are back in session.

Sincerely,

Mike

Cc: Ald. Mike Morgan, District 7

Ald. Amanda Fuerst, District 7

Ald. Jason Wilke, District 8

David Simpson, Director of Public Works

Eva Ennamorato, Communications Manager

Michael May, PE, PTOE, RSP1

Senior Civil Engineer – Traffic & Transportation

City of Wauwatosa

7725 W. North Avenue

Wauwatosa, WI 53213

General: 414-479-8900

Direct: 414-479-8930

mmay@wauwatosa.net

--

Corey Golla
Principal

Confidentiality Notice:

This email message, including any attachments, is for the sole use of the intended recipient(s) and may contain confidential and/or privileged information. If you are not the intended recipient(s), you are hereby notified that any dissemination, unauthorized review, use, disclosure or distribution of this email and any materials contained in any attachment is prohibited.

If you receive this message in error, or are not the intended recipients(s), please immediately notify the sender by email and destroy all copies of the original message, including attachments.



NOTICE OF 90-DAY PARKING TRIAL #2

Dear Resident:

The City of Wauwatosa Transportation Affairs Committee voted at its September 17th meeting to remove all parking restrictions on the west side of 113th Street, west side of 114th Street, and east side of 115th Street from Center Street to Clarke Street for a period of 90-days.

At its January 21st meeting, the Committee voted to modify and extend the trial. The modification will reincorporate 2-hour parking on 114th Street and 115th Street within approximately the first 200-feet of Center Street. The changes will take effect on Monday, February 17th.

The Transportation Affairs Committee seeks your input regarding the latest parking trial. You are encouraged to leave your comments at the link below (comments from the first trial have been archived). Comments received will be shared with the Committee.

<https://engage.wauwatosa.net/parking-near-center>

The Transportation Affairs Committee will review comments and parking results of this latest trial at its meeting on May 13th. Please visit the City of Wauwatosa meeting portal after May 8th to determine the meeting date at time.

<https://www.wauwatosa.net/meetingportal>





NOTICE OF PROPOSED END TO 90-DAY PARKING TRIAL #2

Dear Resident:

The City of Wauwatosa Transportation Affairs Committee voted at its September 17th meeting to remove all parking restrictions on the west side of 113th Street, west side of 114th Street, and east side of 115th Street from Center Street to Clarke Street for a period of 90-days.

At its January 21st meeting, the Committee voted to modify and extend the trial. The modification will reincorporate 2-hour parking on 114th Street and 115th Street within approximately the first 200-feet of Center Street. The changes took effect on Monday, February 17th.

The Transportation Affairs Committee seeks your input regarding the latest parking trial. You are encouraged to leave your comments at the link below (comments from the first trial have been archived). Comments received will be shared with the Committee.

<https://engage.wauwatosa.net/parking-near-center>

The Transportation Affairs Committee will review comments and parking results of this latest trial at its meeting on May 13th at 6:30pm. Please visit the City of Wauwatosa meeting portal after May 9th for a copy of the meeting agenda and staff recommendation for permanent parking changes.

<https://www.wauwatosa.net/meetingportal>



CITY OF WAUWATOSA, ENGINEERING DIVISION

O: (414) 479-8927 | F: (414) 479-8916

7725 W. North Ave. | Wauwatosa, WI 53213 | www.wauwatosa.net





Wauwatosa, WI

7725 W. North Avenue
Wauwatosa, WI 53213

Staff Report

File #: 25-0737

Agenda Date: 5/13/2025

Agenda #: 4.

Consideration of request from Engineering Division for a 90-day trial of 15-minute parking restrictions on the east side of 70th Street from North Avenue to the alley south of North Avenue

Submitted by:

Michael May, PE, PTOE, RSP1

Department:

DPW - Engineering Division

A. Issue

Illegal parking activities on 70th Street south of North Avenue.

B. Background/Options

Two-hour parking is provided from 9am to 6pm, except Sundays and legal holidays, along the east side of 70th Street from North Avenue to the alley south of North Avenue. Parking is prohibited south of the alley.

A Wingstop restaurant recently opened on the southeast corner of North Avenue and 70th Street. Wingstop relies on quick-in/quick-out service as well as third-party pick-up/delivery service. Staff has received complaints of double parking within the existing 2-hour parking zone, blocked driveways and alley, and other illegal parking activities. Wauwatosa parking checkers have increased parking enforcement in the area.

Staff recommends a 90-day trial of a 15-minute parking zone on the east side of 70th Street from North Avenue to the alley south of North Avenue to encourage quick turnover of parking stalls and reduce illegal parking on the block.

C. Strategic Plan (Area of Focus)

NA

D. Fiscal Impact

Minor expenses for the installation of signs. The existing sign budget will accommodate these expenses.

E. Recommendation

Direct staff to initiate a 90-day trial of 15-minute parking restrictions on the east side of 70th Street from North Avenue to the alley south of North Avenue.



Approximate Location of Proposed Parking Trial



Wauwatosa, WI

7725 W. North Avenue
Wauwatosa, WI 53213

Staff Report

File #: 25-0755

Agenda Date: 5/13/2025

Agenda #: 5.

Consideration of request from Engineering Division to adopt a 25 mph posted speed limit on Ludington Avenue between Milwaukee Avenue and North Avenue

Submitted by:

Michael May, PE, PTOE, RSP1

Department:

DPW - Engineering Division

A. Issue

Ordinance language clean-up required due to existing language conflict.

B. Background/Options

Staff realized that WMC 11.36.470 shows a 30-mph speed limit for Ludington Avenue from North 83rd Street to West North Avenue. WMC 11.36.472 shows a 25-mph speed limit for Ludington Avenue from Milwaukee Avenue to North Avenue.

The intended and signed speed limit for Ludington Avenue is 25mph. Therefore, staff recommends that an ordinance be prepared to formally adopt a 25-mph speed limit on Ludington Avenue.

C. Strategic Plan (Area of Focus)

NA

D. Fiscal Impact

None

E. Recommendation

Direct staff to prepare an ordinance to formally adopt a 25-mph posted speed limit on Ludington Avenue between Milwaukee Avenue and North Avenue.

Proposed Ordinance changes to 11.36 Speed Limit Changes

The Common Council of Wauwatosa do ordain as follows:

Part I. The “Speed Limits—Thirty Miles Per Hour” portion of the “Driving Regulations” subsection of the Wauwatosa Code Section 11.36.470 is hereby amended by deleting the following:

(G) Ludington Avenue from North 83rd Street to West North Avenue

Part II. The “Speed Limits – Twenty-Five Miles Per Hour” portion of the “Driving Regulations” subsection of the Wauwatosa Code Section 11.36.472 is hereby amended by deleting the following:

(A) Ludington Avenue between Milwaukee Avenue and 88th Street north of North Avenue.

Part III. This ordinance shall take effect on and after its date of publication.