



Wauwatosa, WI

Transportation Affairs Committee

Meeting Agenda

7725 W. North Avenue
Wauwatosa, WI 53213

Tuesday, July 25, 2023

6:30 PM

Committee Room #1 and Zoom:
<https://servetosa.zoom.us/j/81144274572>,
Meeting ID: 811 4427 4572

Regular Meeting

HYBRID MEETING INFORMATION

Members of the public may observe and participate in the meeting in-person or via Zoom at the link above. To access the Zoom meeting via phone, call 1-312-626-6799 and enter the Meeting ID.

CALL TO ORDER

ROLL CALL

ORDINANCES FOR ADOPTION CONSIDERATION

1. Ordinance amending Section 11.32.080 of the Wauwatosa Municipal Code to modify parking regulations on the east side of 68th Street south of Milwaukee Avenue to State Street [23-357](#)

Recommendation: Introduced on July 18, 2023, for adoption consideration

2. Ordinance creating Section 11.04.015 of the Wauwatosa Municipal Code adopting Wis. Administrative Code Trans 305 for enforcement of equipment violations [23-358](#)

Recommendation: Introduced on July 18, 2023, for adoption consideration

TRANSPORTATION AFFAIRS COMMITTEE ITEMS

1. Consideration of amendment to the official stop sign map to include the installation of all-way stop control at 72nd Street & Maple Terrace intersection [23-359](#)
2. Consideration of amendment to Section 11.32.080 of the Wauwatosa Municipal Code to modify parking regulations on the south side of Maple Terrace from 68th Street to 70th Street [23-360](#)

ADJOURNMENT

NOTICE TO PERSONS WITH A DISABILITY

Persons with a disability who need assistance to participate in this meeting should call the City Clerk's office at (414) 479-8917 or send an email to tclerk@wauwatosa.net, with as much advance notice as possible.



Wauwatosa, WI

7725 W. North Avenue
Wauwatosa, WI 53213

Staff Report

File #: 23-357

Agenda Date: 8/1/2023

Agenda #: 1.

By: Transportation Affairs Committee

Ordinance amending Section 11.32.080 of the Wauwatosa Municipal Code to modify parking regulations on the east side of 68th Street south of Milwaukee Avenue to State Street

Part I. The portion of the "Schedule of Streets", and portions subsection of Wauwatosa Code Section 11.32.080 is hereby amended by creating the following subsection:

"(mmm) from 8AM to 6PM Monday-Friday"

Part II. The "68th street-east side" portion of the "Schedule of Streets", and portions subsection of Wauwatosa Code Section 11.32.080 is hereby amended by deleting the following:

"(a) from Milwaukee Avenue to State Street"

Part III. The "68th street-east side" portion of the "Schedule of Streets", and portions subsection of Wauwatosa Code Section 11.32.080 is hereby amended by adding the following:

"(mmm) from 73 feet south of Milwaukee Avenue to 125 feet south of Milwaukee Avenue"

Part IV. The "68th street-east side" portion of the "Schedule of Streets", and portions subsection of Wauwatosa Code Section 11.32.080 is hereby amended by adding the following:

"(a) from Milwaukee Avenue to 73 feet south of Milwaukee Avenue"

and

"(a) from 125 feet south of Milwaukee Avenue to State Street"

Part V. This ordinance shall take effect on and after its date of publication.

Recommendation: Introduced on July 18, 2023, for adoption consideration



Wauwatosa, WI

7725 W. North Avenue
Wauwatosa, WI 53213

Staff Report

File #: 23-358

Agenda Date: 8/1/2023

Agenda #: 2.

By: Transportation Affairs Committee

Ordinance creating Section 11.04.015 of the Wauwatosa Municipal Code adopting Wis. Administrative Code Trans 305 for enforcement of equipment violations

The Common Council of the City of Wauwatosa do ordain as follows:

Part I. Section 11.04.015 of the Wauwatosa Municipal Code is hereby created to read as follows:

11.04.015 Trans 305 adopted

All provisions of Chapter Trans 305, Wisconsin Administrative Code, are adopted by reference excepting the penalty provisions thereof. Any person violating the provisions of this section shall be subject to the general penalty provisions of this code.

Part II. This ordinance shall take effect on and after its date of publication.

Recommendation: Introduced on July 18, 2023, for adoption consideration



Wauwatosa, WI

7725 W. North Avenue
Wauwatosa, WI 53213

Staff Report

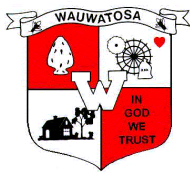
File #: 23-359

Agenda Date: 7/25/2023

Agenda #: 1.

Title

Consideration of amendment to the official stop sign map to include the installation of all-way stop control at 72nd Street & Maple Terrace intersection



CITY OF WAUWATOSA
MEMO

To: **Transportation Affairs Committee**

From: **Michael May, PE PTOE**
Senior Civil Engineer – Traffic & Transportation

Date: **July 19, 2023**

Subject: **Consideration Of Amendment To The Official Stop Sign Map To Include All-Way Stop Control at the 72nd Street & Maple Terrace Intersection**

A. Issue

The existing two-way stop configuration of 72nd Street & Maple Terrace violates driver expectancy, and poor visibility of an unofficial trailhead creates a potential safety situation to intersection users.

B. Background/Options

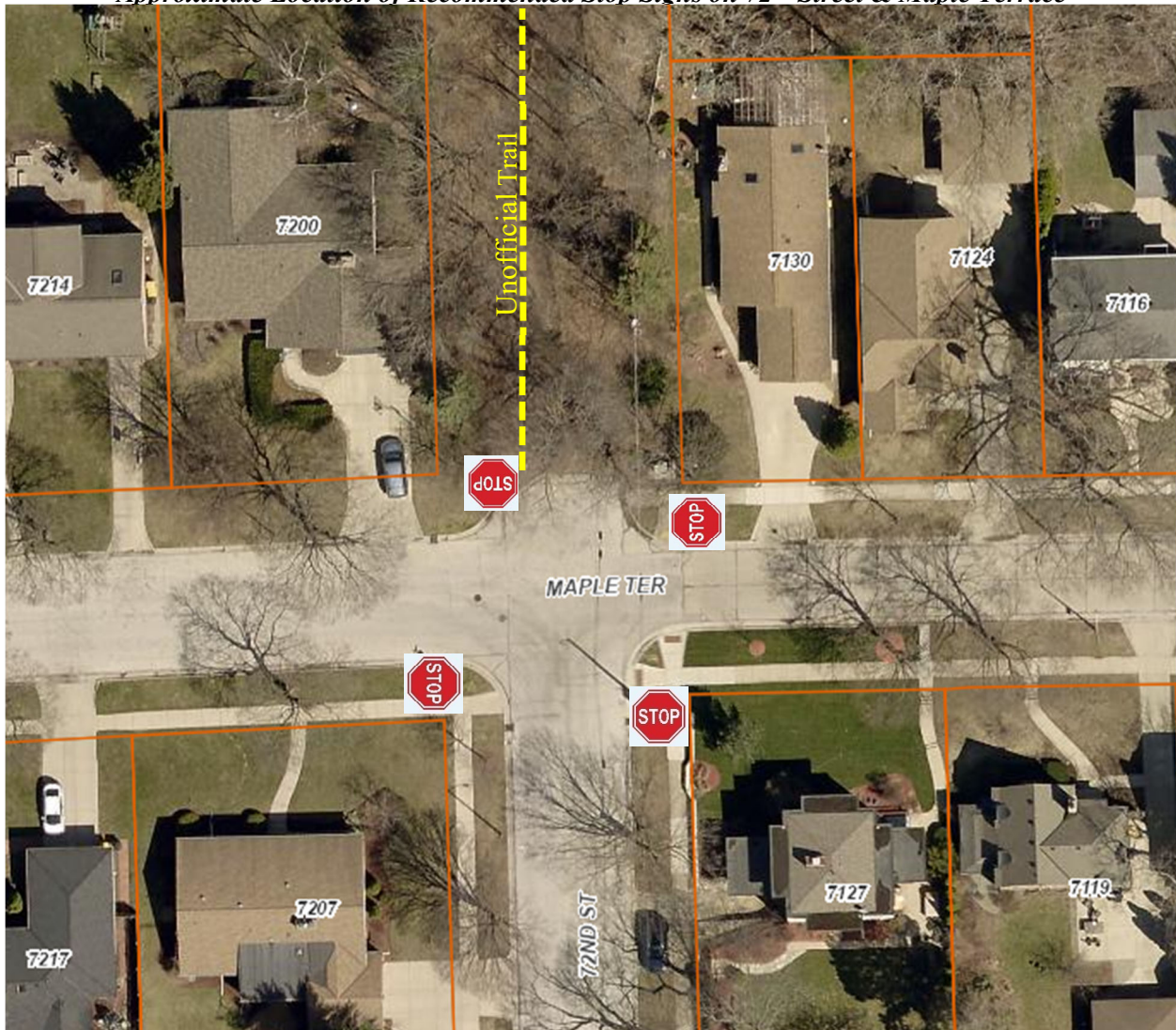
The City has adopted a policy that follows national standards related to the installation of yield and stop signs. The policy allows residents to request consideration for stop signs when they believe a condition, as described within the Manual on Uniform Traffic Control Devices (MUTCD), has been met. Staff received a request to change the intersection control of 72nd Street & Maple Terrace due to a resident concern for driver expectancy.

The 72nd Street & Maple Terrace intersection looks and feels like a three-leg T-intersection to approaching motorists. The south leg of the intersection (72nd Street) forms the “stem” of the T while the east and west legs (Maple Terrace) form the “top” of the T. The east and west legs of Maple Terrace are controlled by stop signs while the south leg of operates uncontrolled. This layout is unconventional to driver expectation – typically if the “top” of the T is controlled by stop signs the “stem” of the T is also controlled by stop signs. Motorists east and west on the Maple Terrace were observed to stop and then continue through the intersection with the expectation that traffic from the south on 72nd Street will also stop. This is not the case – traffic from the south does not stop and leads to horn blowing.

In response to these observations, staff had considered recommending the removal of all stop signs at the intersection and operating the intersection uncontrolled under normal right-of-way rules. However, upon further observation, the removal of stop signs is not recommended. There is an unofficial north/south trail that has been blazed on City right-of-way immediately north of the intersection, creating a fourth leg to the intersection that is used by bicyclists and pedestrians. The trailhead at 72nd Street & Maple Terrace is difficult to see if motorists on all legs of the intersection are not required to stop.

Therefore, for the purpose of increasing the visibility and safety of the trailhead at 72nd Street & Maple Terrace, all-way stop control is warranted and recommended at the 72nd Street & Maple Terrace intersection. A figure showing the approximate location of recommended stop signs is shown in the figure on the following page.

Approximate Location of Recommended Stop Signs on 72nd Street & Maple Terrace



C. Strategic Plan (Area of Focus)

Priority 2: Public Safety; Goal 2. Proactively address pedestrian, bicycle, and vehicular safety.

D. Fiscal Impact

Minor expenses for the in-house creation and installation of signs. The existing sign budget will accommodate these expenses.

E. Recommendation

Recommend the Common Council amend the official stop sign map to include stop signs on all four approaches of the 72nd Street & Maple Terrace intersection.



Staff Report

File #: 23-360

Agenda Date: 7/25/2023

Agenda #: 2.

Title/Recommendation

Consideration of amendment to Section 11.32.080 of the Wauwatosa Municipal Code to modify parking regulations on the south side of Maple Terrace from 68th Street to 70th Street

Memo Body

A. Issue

The Wauwatosa School District requested parking modifications along the south side of Maple Terrace, between 68th Street and 70th Street, as part of Jefferson Elementary School site improvements.

B. Background/Options

Jefferson Elementary School is completing site improvements to their current pick-up/drop-off lane along the south side of Maple Terrace. The purpose of this project is to make the lane ADA accessible. The existing drop off lane is approximately 265-feet long with 11 pick-up/drop-off spaces. The proposed drop off area will remain 265-feet long but will dedicate 3 of the 11 spaces as accessible spaces.

Staff notes that City ordinance currently prohibits parking along the south side of Maple Terrace from 68th Street to 70th Street. However, existing conditions along the pick-up/drop-off lane are signed for "No Parking, 7:30am-4:30pm on School Days". Therefore, while this change will appear in ordinance to be an increase to parking in the area, the only change that will be realized by property owners and users of the road is the dedication of the 3 accessible spaces.

Staff is recommending codifying parking changes as shown in the attached exhibit and summarized as follows.

South Side of Maple Terrace

1. No Parking Anytime, from N. 70th Street to 23'-0" east
2. No Parking 7:30am to 4:30pm on school days, from 23'-0" feet east of N 70th Street to 104'-0" east of N 70th Street
3. Handicap Parking Only, from 104'-0" east of N 70th Street to 170'-6" east of N 70th Street
4. No Parking 7:30am to 4:30pm on school days, from 170'-6" east of N 70th Street to 287'-6" east of N 70th Street
5. No Parking Anytime, from 287'-6" east of N 70th Street to N 68th Street

The pick-up/drop-off lane will be complete prior to the start of school and prior to our next Transportation

Affairs Committee, which is when the Committee would traditionally vote on the official ordinance language before sending the matter back to the Common Council. It is in the interest of the City and the School District to have the signs installed upon completion of the pick-up/drop-off lane and prior to the start of school. Therefore, staff is recommending that the Committee direct the installation of signs upon completion of the pick-up/drop-off lane and prior to formal adoption by the Common Council.

C. Strategic Plan (Area of Focus)

N/A

D. Fiscal Impact

None. The contractor for the Wauwatosa School District will complete the work.

E. Recommendation

Codify the parking changes outlined in section B and shown on the attached exhibit. Additionally, direct the installation of signs upon completion of the pick-up/drop-off lane and prior to formal adoption by the Common Council.