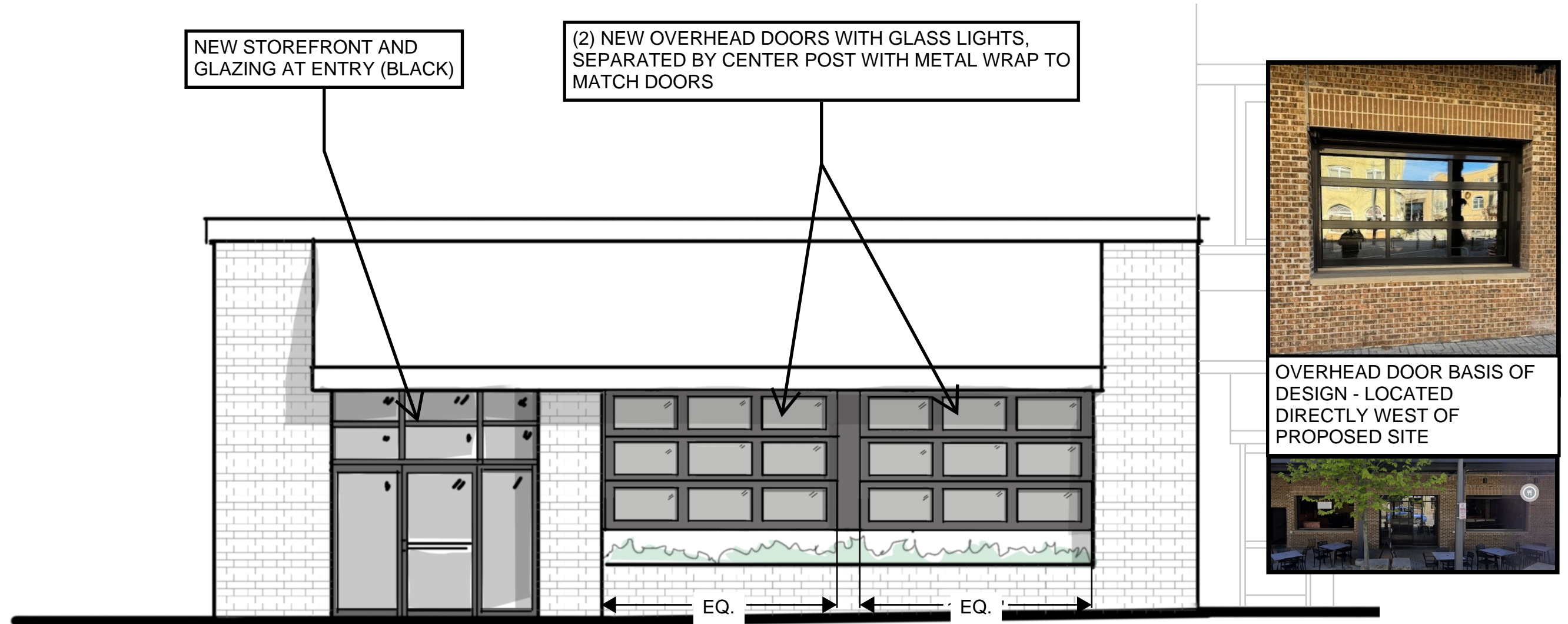


EXISTING NORTH ELEVATION SCALE: 3/16" = 1' - 0"

STOREFRONT REPLACEMENT - 7603 W. STATE STREET

JANUARY 14, 2026



PROPOSED NORTH ELEVATION SCALE: 3/16" = 1' - 0"

STOREFRONT REPLACEMENT - 7603 W. STATE STREET

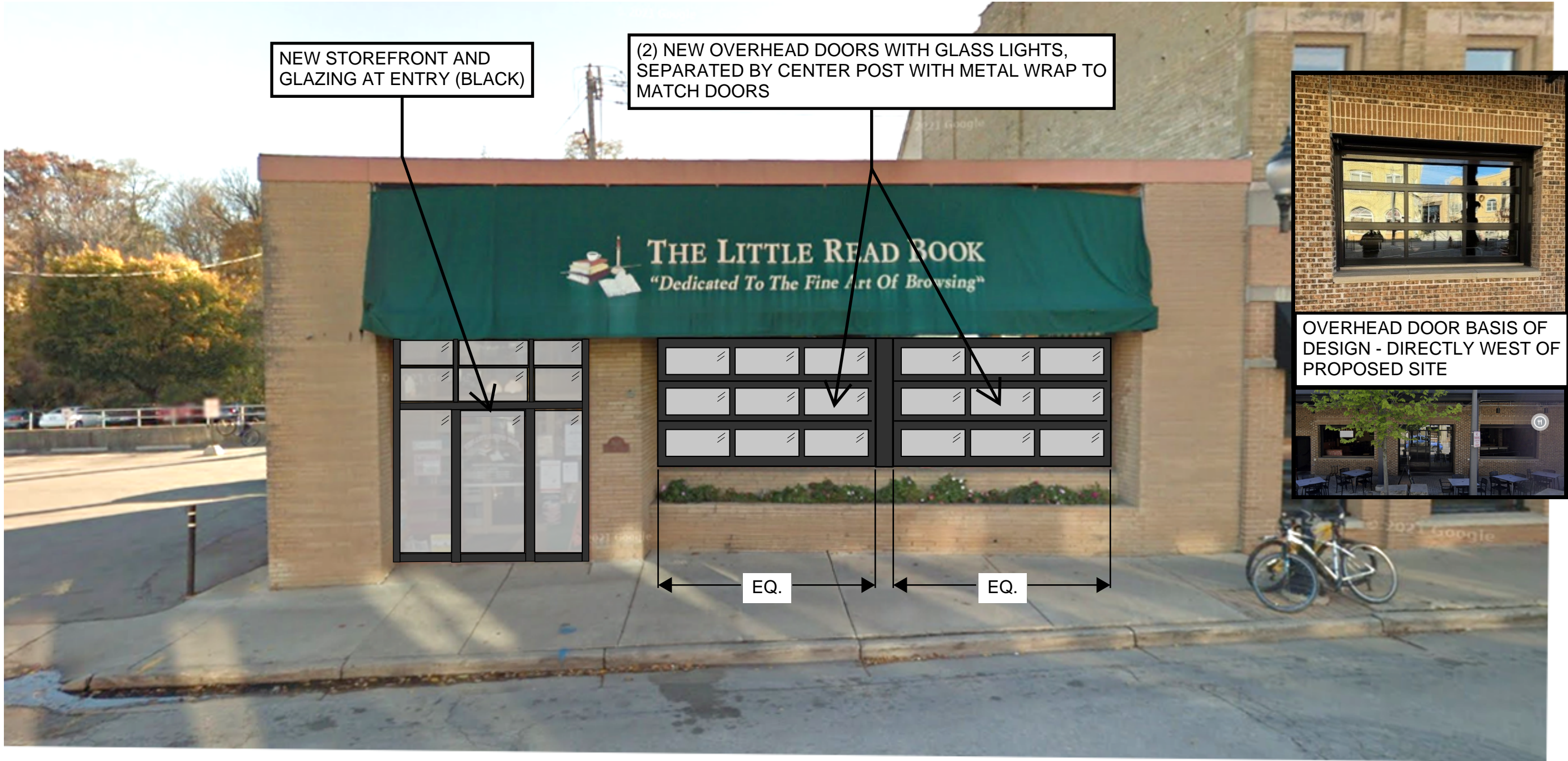
JANUARY 14, 2026



EXISTING ELEVATION

STOREFRONT REPLACEMENT - 7603 W. STATE STREET

JANUARY 14, 2026



NEW STOREFRONT AND
GLAZING AT ENTRY (BLACK)

(2) NEW OVERHEAD DOORS WITH GLASS LIGHTS,
SEPARATED BY CENTER POST WITH METAL WRAP TO
MATCH DOORS

OVERHEAD DOOR BASIS OF
DESIGN - DIRECTLY WEST OF
PROPOSED SITE



EQ.

EQ.

PROPOSED ELEVATION

STOREFRONT REPLACEMENT - 7603 W. STATE STREET

JANUARY 14, 2026