

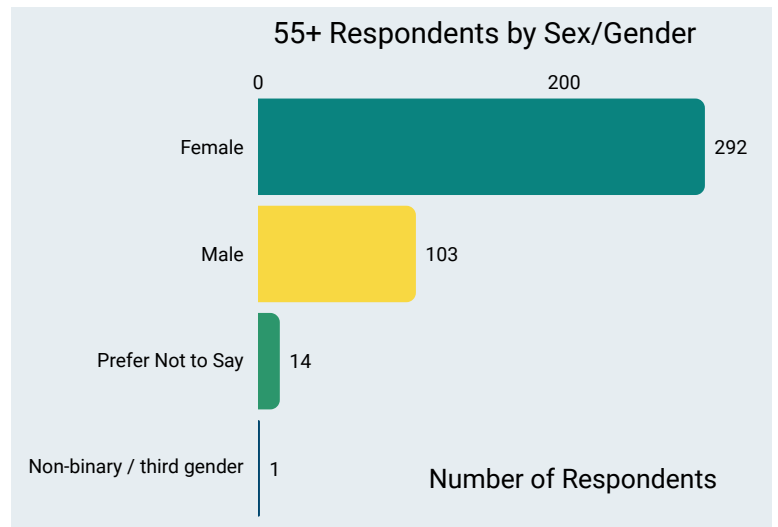
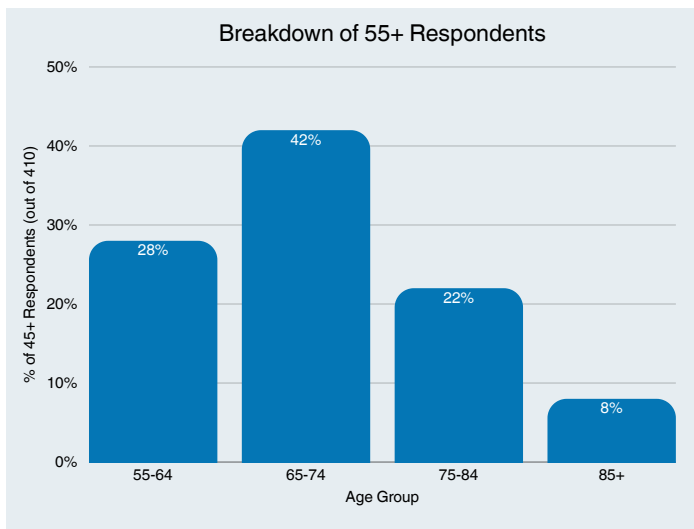


Community Health Survey Snapshot: Age-Friendly



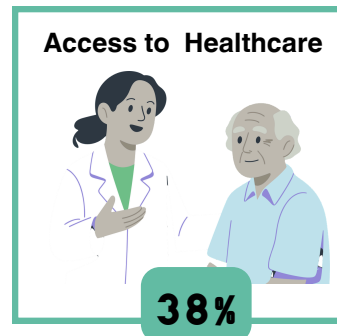
Summary

Of 745 survey respondents, 410 (55%) were 55 years or older. This report displays metrics specific to these 410 respondents.

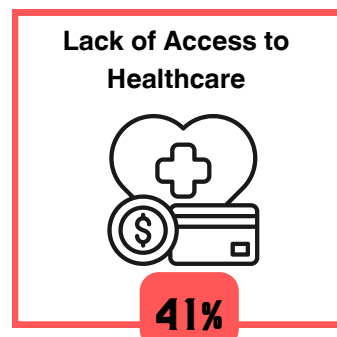
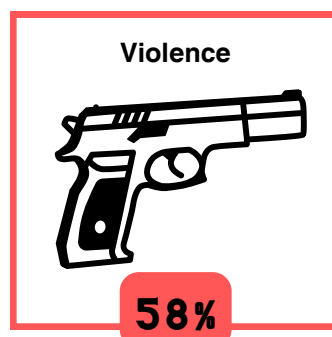


We asked respondents to rank the top 3 factors they believe define a healthy community.

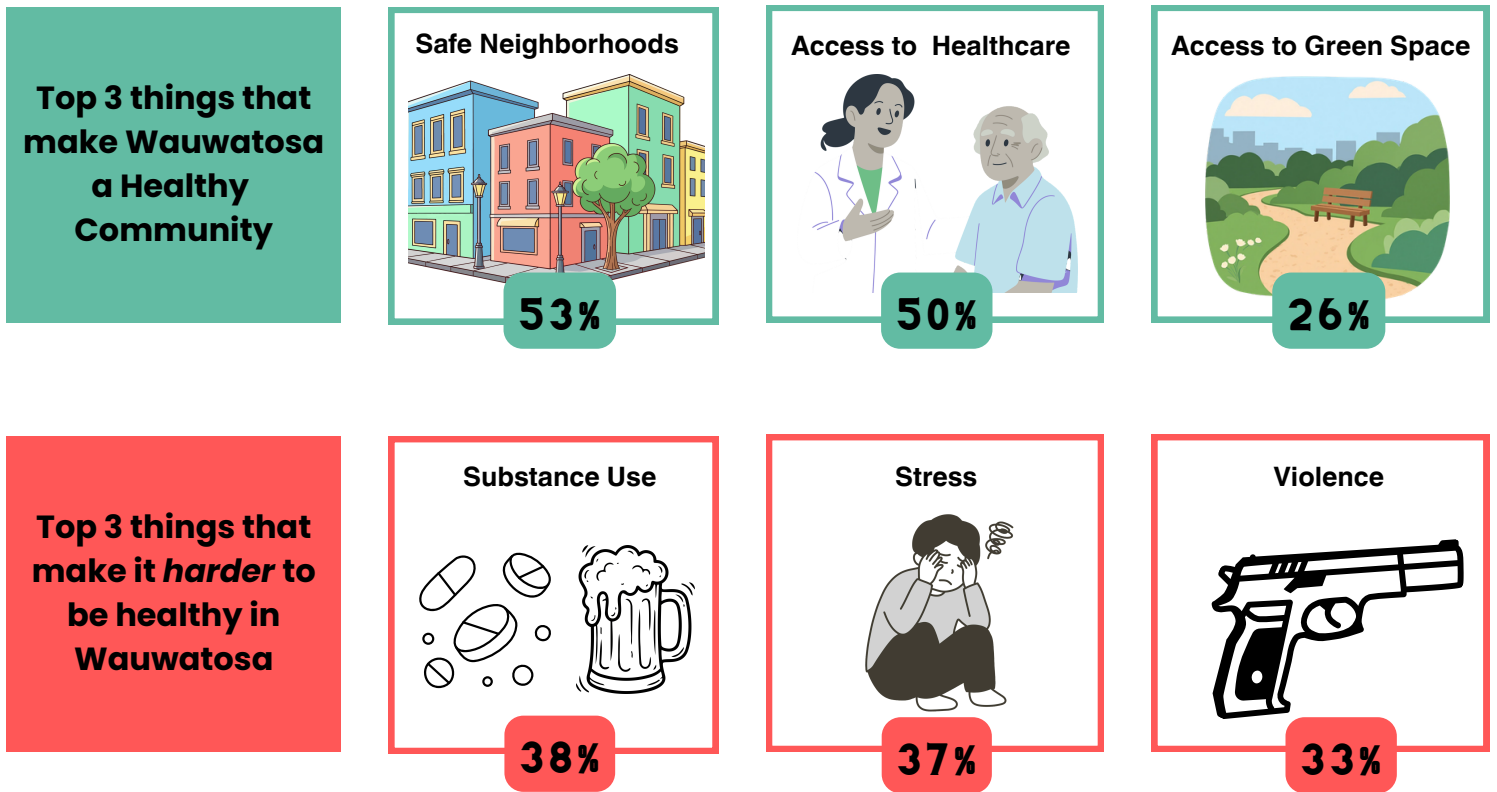
Top 3 things that make a Healthy Community



Top 3 things that make it *harder* for a community to be healthy



We asked respondents to rank the assets and barriers to being healthy in Wauwatosa.



Other Hot Topics

Survey Respondents had the option to add further topics of concern. Below are common topics that arose.

Distrust in government

Apartment buildings & overcrowding

Cost of Housing & Living

Traffic Safety

School Funding

Mental and Physical Isolation

Quotes from Survey Respondents

1 Trust in Government

- *Need to reject liberal policies*
- *Too many alders don't care about the residents and their opinions.*
- *Unresponsive local government is a HUGE problem*
- *You keep raising taxes and use the higher tax base to keep people from moving into the area that you don't believe belong here*

2 Housing

- *Those working essential jobs cannot afford to rent even a simple studio apartment.*
- *Apartments are priced for doctors.*
- *Recent tax increases are driving long time residents to have to leave.*
- *Wauwatosa has changed from a village of homes to a city of apartments and developers' haven.*

3 Traffic Safety

- *I moved here to be in a more walkable community but am constantly battling unsafe drivers that have no concerns for bicyclists and walkers.*
- *The wonderful tosa village has disappeared along with decent parking for what's left. Seniors cannot walk so far. The increased traffic is already a huge problem.*
- *I love to bike and walk around Wauwatosa but at certain times of the day there is too many reckless drivers that are speeding, ignoring traffic signs/signals.*
- *Why are we overbuilding the village... it was already congested with traffic prior to all the apt being built . We have problems with speeding and reckless driving which we do not have a handle on.*

Age-Friendly Related Concerns

“Unless you have local family or are still able to drive, we're are rather confined. **One thing that would help would be a school crossing light so that people could cross Harwood Ave & walk in the Glenview neighborhood to have a change of scenery.** The kind of isolation that some here experience can be felt, multiplied, particularly by older & poorer people in Wauwatosa. **Being hard of hearing or needing a walker severely limits for getting to the grocery, the doctor, dentist, senior meals, etc.”**

“People who are confined to their homes due to aging, eyesight or dementia, find it very **difficult to receive the services of doctors and nurses without the use of an ambulance. We need home delivered care by creating a plan for community nurses to assist the homebound and their doctors to receive accurate, well coordinated video care.** Nurses could provide and validate the clinical information needed by personal physicians to create an accurate care plan. Nurses could deliver vaccinations and other medical services. As our community ages in place, these services become all the more necessary. “

“**More transportation options** would help older residents remain active and connected”

“It would be helpful to consider more partnerships with **increased programming with the recreation department,** senior center and public as well as private schools. The recreation department can help promote healthy lifestyles by incorporating more programs that utilize the health dept. staff. By adding the use of the spaces in city hall and senior center would expand reach.”

“Many older residents are on fixed incomes, so **keeping healthcare and transportation affordable** is essential to staying independent and healthy.”