

IRGENS RESEARCH DRIVE PHASE II

10701 RESEARCH DRIVE

CITY OF WAUWATOSA

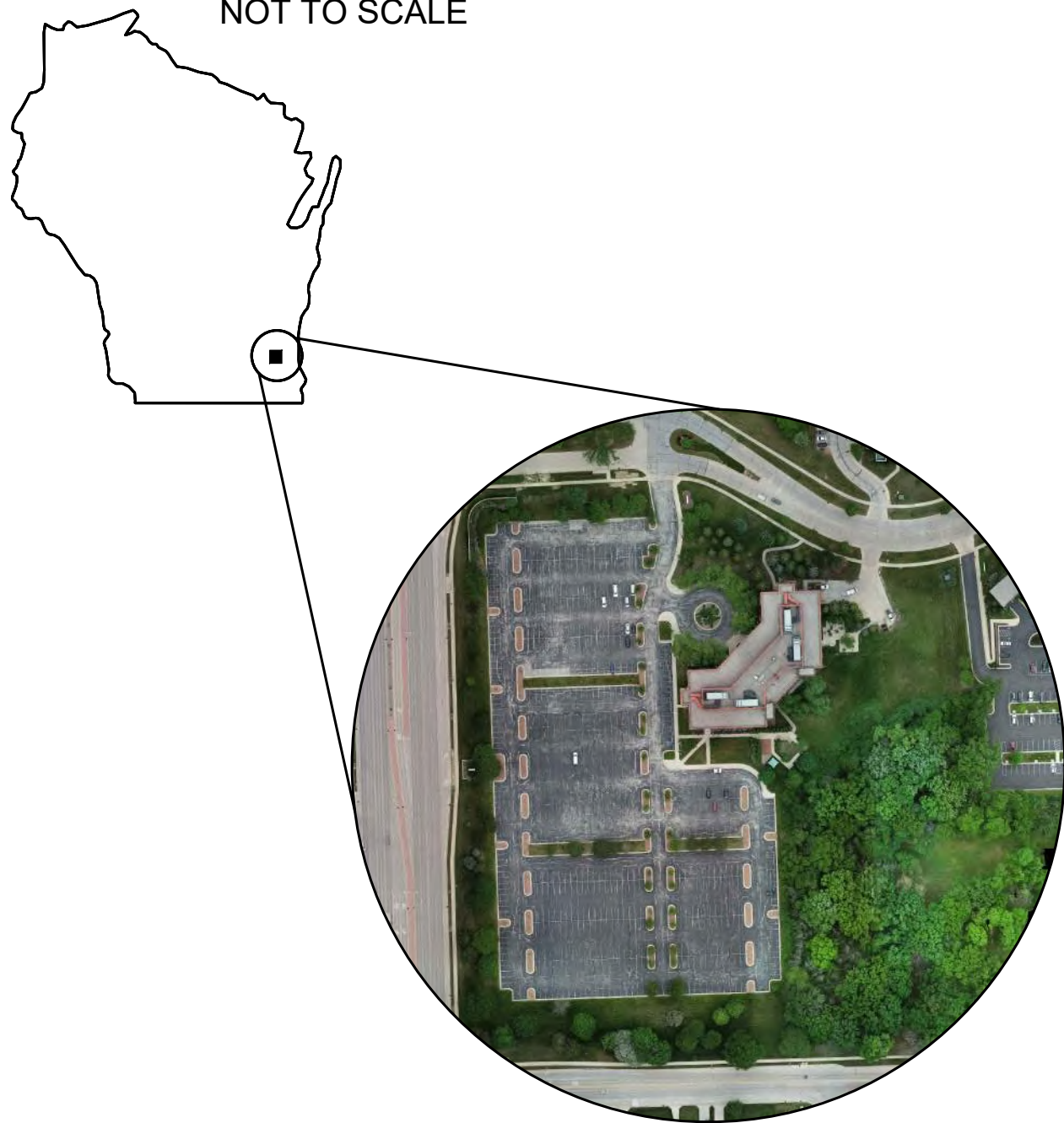
CIVIL ENGINEERING PLANS

PREPARED BY:

THE SIGMA GROUP
Single Source. Sound Solutions.
www.thesigmagroup.com
1300 West Canal Street
Milwaukee, WI 53233
Phone: 414-643-4200
Fax: 414-643-4210

SITE LOCATION MAP:

NOT TO SCALE



SHEET INDEX

IRGENS RESEARCH DRIVE

SHEET NO.	CIVIL PLANS
C000	COVER SHEET
C001	SURVEY
C002	SITE PREPARATION & EROSION CONTROL
C100	SITE PLAN
C200	GRADING PLAN
C300	UTILITY PLAN
C400 - C402	DETAILS
C500 - C501	SPECIFICATIONS
SHEET NO.	LANDSCAPING PLANS
L101	SITE LANDSCAPE PLAN - LOT 3
L200	LANDSCAPE NOTES & DETAILS

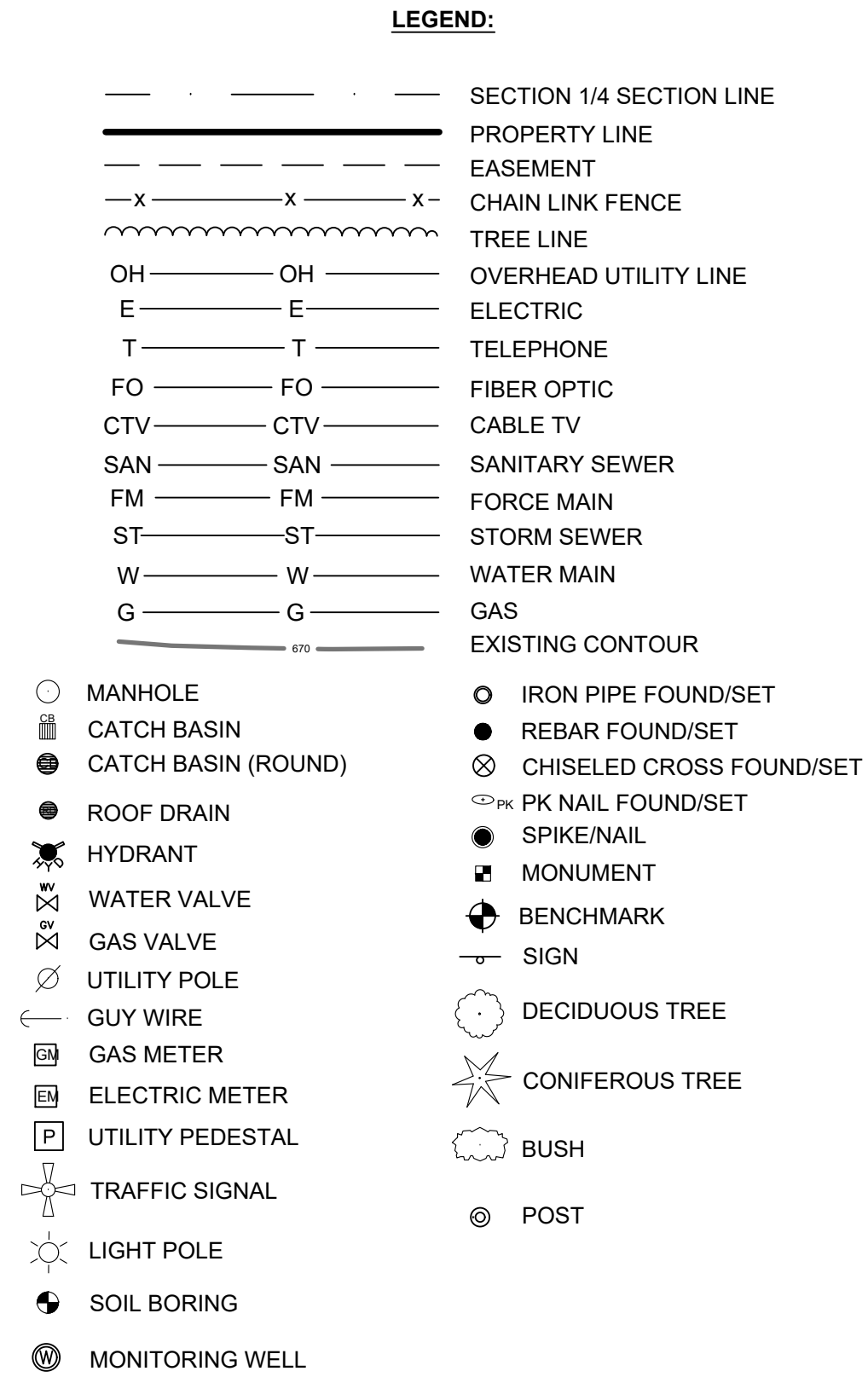


CALL DIGGERS HOTLINE
1-800-242-8511
TOLL FREE

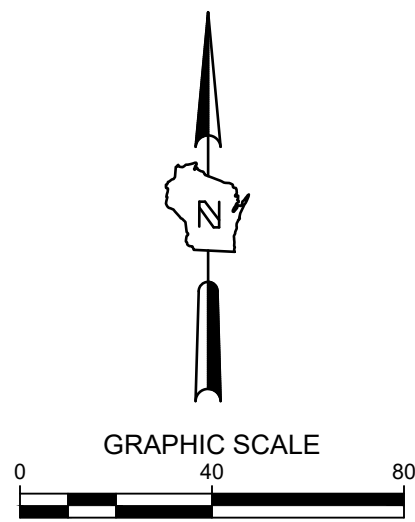
WE STATUTE 182.07(2)(a)
REQUIRES MIN. 2 WORK DAYS
NOTICE BEFORE YOU DIG/DATE.

MILW. AREA 259-1181

Date 1/24/2023



THE SIGMA GROUP
Single Source. Sound Solutions.
www.thesigmagroup.com
1300 West Canal Street
Milwaukee, WI 53233
Phone: 414-643-4200
Fax: 414-643-4210



PRELIMINARY NOT FOR CONSTRUCTION

IRGENS RESEARCH DRIVE PHASE II

10701 RESEARCH DRIVE

WAUWATOSEA, WI 53226

SURVEY

NO. REVISION	DATE
--------------	------

SCALE:	1"=40'
PROJECT NO:	20166
DESIGN DATE:	----
PLOT DATE:	2023.01.24
DRAWN BY:	----
CHECKED BY:	CTC
APPROVED BY:	----
SHEET NO:	

C001



- ### GENERAL NOTES:
1. THE UNDERGROUND UTILITY INFORMATION SHOWN ON THIS DRAWING IS BASED ON FIELD LOCATIONS AND/OR RECORDS FURNISHED BY MUNICIPALITIES AND UTILITY COMPANIES. THE LOCATION AND ACCURACY OF WHICH CANNOT BE GUARANTEED. THERE MAY BE ADDITIONAL UNDERGROUND UTILITY INSTALLATIONS WITHIN THE PROJECT AREA THAT ARE NOT SHOWN.
 2. VERIFY ACTUAL LOCATIONS AND INVERTS IN THE FIELD. ANY POTENTIAL ERRORS, OMISSIONS, OR DISCREPANCIES SHALL BE BROUGHT TO THE ATTENTION OF THE ENGINEER PRIOR TO PROCEEDING WITH CONSTRUCTION.
 3. WORK TO BE COMPLETED IS INDICATED IN BOLD TYPE LINES AND EXISTING CONDITIONS ARE INDICATED BY LIGHT TYPE LINES.
 4. ELECTRONIC CIVIL FILES ARE AVAILABLE UPON WRITTEN REQUEST. DO NOT USE ELECTRONIC CIVIL FILES TO LAYOUT FOUNDATIONS, COLUMN LINES, LIGHT POLES, OR OTHER NON CIVIL SITE WORK. REFER TO ARCHITECTURAL DRAWINGS FOR DIMENSIONS OF BUILDING AND ARCHITECTURAL FEATURES.
 5. SEE SHEET C400 FOR A COMPLETE LIST OF EROSION CONTROL NOTES AND DETAILS. EROSION CONTROL MEASURES SHALL BE INSTALLED PRIOR TO START OF LAND DISTURBING ACTIVITIES.
 6. DO NOT BEGIN LAND DISTURBING ACTIVITIES UNTIL AN EROSION CONTROL PERMIT IS OBTAINED FROM LOCAL JURISDICTION.

1. THE UNDERGROUND UTILITY INFORMATION SHOWN ON THIS DRAWING IS BASED ON FIELD LOCATIONS AND/OR RECORDS FURNISHED BY MUNICIPALITIES AND UTILITY COMPANIES. THE LOCATION AND ACCURACY OF WHICH CANNOT BE GUARANTEED. THERE MAY BE ADDITIONAL UNDERGROUND UTILITY INSTALLATIONS WITHIN THE PROJECT AREA THAT ARE NOT SHOWN.
2. VERIFY ACTUAL LOCATIONS AND INVERTS IN THE FIELD. ANY POTENTIAL ERRORS, OMISSIONS, OR DISCREPANCIES SHALL BE BROUGHT TO THE ATTENTION OF THE ENGINEER PRIOR TO PROCEEDING WITH CONSTRUCTION.
3. WORK TO BE COMPLETED IS INDICATED IN BOLD TYPE LINES AND EXISTING CONDITIONS ARE INDICATED BY LIGHT TYPE LINES.
4. ELECTRONIC CIVIL FILES ARE AVAILABLE UPON WRITTEN REQUEST. DO NOT USE ELECTRONIC CIVIL FILES TO LAYOUT FOUNDATIONS, COLUMN LINES, LIGHT POLES, OR OTHER NON CIVIL SITE WORK. REFER TO ARCHITECTURAL DRAWINGS FOR DIMENSIONS OF BUILDING AND ARCHITECTURAL FEATURES.
5. SEE SHEET C400 FOR A COMPLETE LIST OF EROSION CONTROL NOTES AND DETAILS. EROSION CONTROL MEASURES SHALL BE INSTALLED PRIOR TO START OF LAND DISTURBING ACTIVITIES.
6. DO NOT BEGIN LAND DISTURBING ACTIVITIES UNTIL AN EROSION CONTROL PERMIT IS OBTAINED FROM LOCAL JURISDICTION.

PROPOSED SILT FENCE OR SILT SOCK

PROPOSED INLET PROTECTION

PROPOSED TRACKING PAD

PROPOSED EROSION MATTING WISDOT
APPROVED CLASS 1 TYPE B

PROPOSED SILT FENCE OR SILT SOCK

PROPOSED INLET PROTECTION

PROPOSED TRACKING PAD

PROPOSED EROSION MATTING WISDOT
APPROVED CLASS 1 TYPE B

EXISTING CONTOUR

PROPOSED CONTOUR

UTILITY REMOVAL

CURB REMOVAL

STRUCTURE REMOVAL

PAVEMENT REMOVAL OR PULVERIZE IN
PLACE AND REUSE AS BASE

EXISTING ASPHALT MILL AND OVERLAY (1.25")

TREE REMOVAL

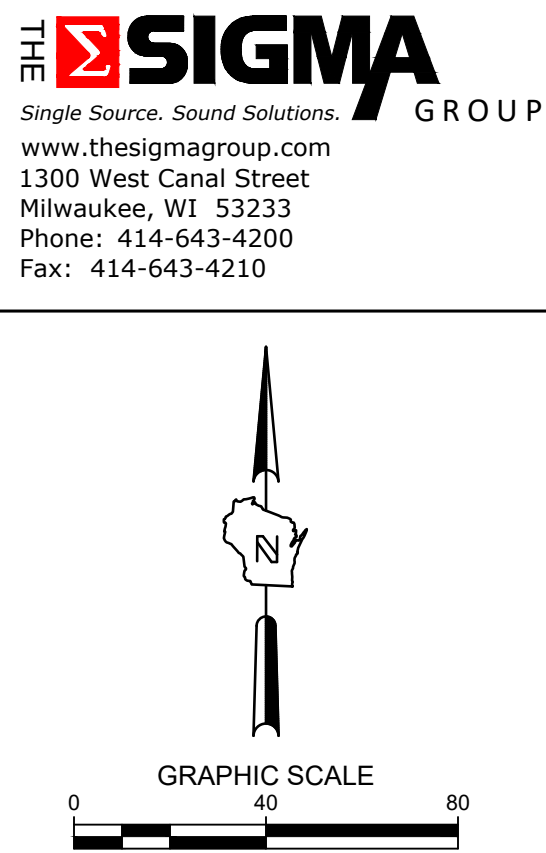
PRELIMINARY NOT FOR CONSTRUCTION

IRGENS RESEARCH DRIVE PHASE II

10701 RESEARCH DRIVE

WAUWATOSEA, WI 53226

SITE PREPARATION & EROSION CONTROL



ISSUANCE	DATE
SD SET	04/20/2022
UPDATED CIVIL PRICING SET	06/24/2022

NO. REVISION	DATE
--------------	------

SCALE:	#####
PROJECT NO:	20166
DESIGN DATE:	----
PLOT DATE:	2023.01.24
DRAWN BY:	----
CHECKED BY:	CTC
APPROVED BY:	----
SHEET NO:	

C002

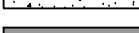


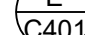




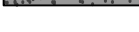





WIS. STATUTE 182.0175(1974).
REQUIRES MIN. 3 WORK DAYS
NOTICE BEFORE YOU EXCAVATE

MILW. AREA 259-118

THE UNDERGROUND UTILITY INFORMATION SHOWN ON THIS MAP IS BASED ON FIELD MARKINGS AND INFORMATION FURNISHED BY UTILITY COMPANIES AND THE LOCAL MUNICIPALITY. WHILE THIS INFORMATION IS BELIEVED TO BE RELIABLE, ITS ACCURACY AND COMPLETENESS CANNOT BE GUARANTEED.

LOT 3 SITE INFORMATION			
SITE AREA	99594	2.286 AC	
SITE DISTURBED AREA	87641	2.012 AC	
EXISTING IMPERVIOUS AREA	72350	1.661 AC	72.6 %
PROPOSED IMPERVIOUS AREA	72092	1.655 AC	72.4 %
TOTAL PARKING SPACES	140		
ADA PARKING SPACES	3		

		5" THICK CONCRETE WALK
		ASPHALT SURFACE
		ASPHALT SURFACE - HEAVY DUTY
		EXISTING ASPHALT MILL AND OVERLAY (1.25")
		EXISTING CURB & GUTTER TO REMAIN
		CURB & GUTTER (ACCEPT)
		CURB & GUTTER (REJECT)

1. THE UNDERGROUND UTILITY INFORMATION SHOWN ON THIS DRAWING IS BASED ON FIELD LOCATIONS AND/OR RECORDS FURNISHED BY MUNICIPALITIES AND UTILITY COMPANIES. THE LOCATION AND ACCURACY OF WHICH CANNOT BE GUARANTEED. THERE MAY BE ADDITIONAL UNDERGROUND UTILITY INSTALLATIONS WITHIN THE PROJECT AREA THAT ARE NOT SHOWN.
2. VERIFY ACTUAL LOCATIONS AND INVERTS IN THE FIELD. ANY POTENTIAL ERRORS, OMISSIONS, OR DISCREPANCIES SHALL BE BROUGHT TO THE ATTENTION OF THE ENGINEER PRIOR TO PROCEEDING WITH CONSTRUCTION.
3. WORK TO BE COMPLETED IS INDICATED IN BOLD TYPE LINES AND EXISTING CONDITIONS ARE INDICATED BY LIGHT TYPE LINES.
4. ELECTRONIC CIVIL FILES ARE AVAILABLE UPON WRITTEN REQUEST DO NOT USE ELECTRONIC CIVIL FILES TO LAYOUT FOUNDATIONS, COLUMN LINES, LIGHT POLES, OR OTHER NON CIVIL SITE WORK. REFER TO ARCHITECTURAL DRAWINGS FOR DIMENSIONS OF BUILDING AND ARCHITECTURAL FEATURES.
5. DIMENSIONS ARE FROM FACE OF CURB OR EDGE OF PAVEMENT.
6. WORK WITHIN THE PUBLIC RIGHT OF WAY, INCLUDING BUT NOT LIMITED TO DRIVEWAY OPENINGS, SIDEWALK AND RAMPS, PAVING, AND CURB AND GUTTER SHALL BE COMPLETED PER MUNICIPAL AND/OR COUNTY REQUIREMENTS AND STANDARDS.
7. EARTHWORK SHALL BE IN ACCORDANCE WITH GEOTECHNICAL ENGINEER'S RECOMMENDATIONS.

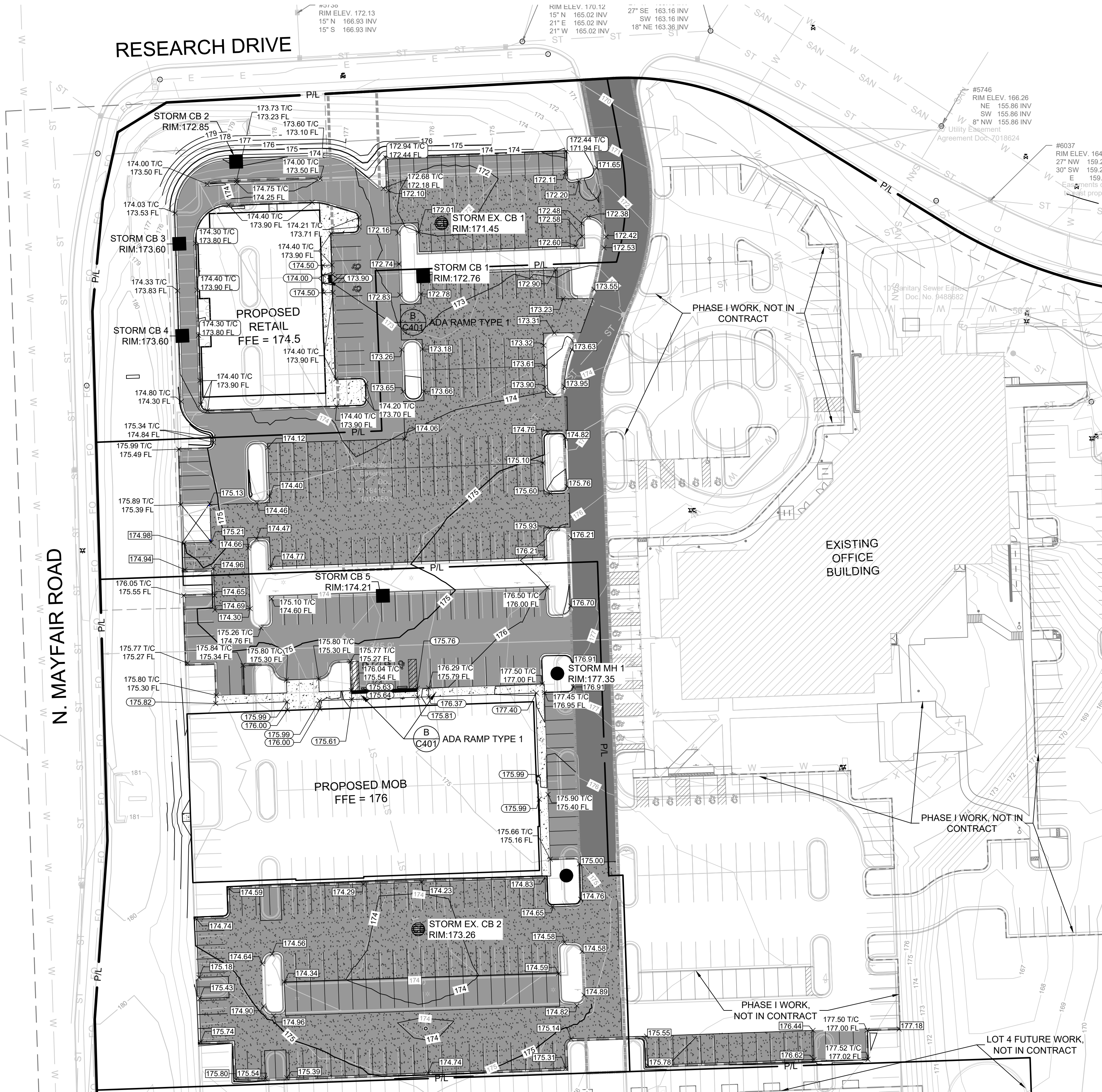
IRGENS RESEARCH DRIVE PHASE II
10701 RESEARCH DRIVE
WAUWATOSEA, WI 53226

SITE PLAN

NO.	REVISION	DATE
-----	----------	------

SCALE:	1"=40'
PROJECT NO:	20166
DESIGN DATE:	----
PLOT DATE:	2023.02.06
DRAWN BY:	----
CHECKED BY:	CTC
APPROVED BY:	----
SHEET NO:	

C100



LEGEND:

- GENERAL NOTES:**
1. THE UNDERGROUND UTILITY INFORMATION SHOWN ON THIS DRAWING IS BASED ON FIELD LOCATIONS AND/OR RECORDS FURNISHED BY MUNICIPALITIES AND UTILITY COMPANIES. THE LOCATION AND ACCURACY OF WHICH CANNOT BE GUARANTEED. THERE MAY BE ADDITIONAL UNDERGROUND UTILITY INSTALLATIONS WITHIN THE PROJECT AREA THAT ARE NOT SHOWN.
 2. VERIFY ACTUAL LOCATIONS AND INVERTS IN THE FIELD. ANY POTENTIAL ERRORS, OMISSIONS, OR DISCREPANCIES SHALL BE BROUGHT TO THE ATTENTION OF THE ENGINEER PRIOR TO PROCEEDING WITH CONSTRUCTION.
 3. WORK TO BE COMPLETED IS INDICATED IN BOLD TYPE LINES AND EXISTING CONDITIONS ARE INDICATED BY LIGHT TYPE LINES.
 4. ELECTRONIC CIVIL FILES ARE AVAILABLE UPON WRITTEN REQUEST. DO NOT USE ELECTRONIC CIVIL FILES TO LAYOUT FOUNDATIONS, COLUMN LINES, LIGHT POLES, OR OTHER NON CIVIL SITE WORK. REFER TO ARCHITECTURAL DRAWINGS FOR DIMENSIONS OF BUILDING AND ARCHITECTURAL FEATURES.
 5. DIMENSIONS ARE FROM FACE OF CURB OR EDGE OF PAVEMENT.
 6. WORK WITHIN THE PUBLIC RIGHT OF WAY, INCLUDING BUT NOT LIMITED TO DRIVEWAY OPENINGS, SIDEWALK AND RAMPS, PAVING, AND CURB AND GUTTER SHALL BE COMPLETED PER MUNICIPAL AND/OR COUNTY REQUIREMENTS AND STANDARDS.
 7. EARTHWORK SHALL BE IN ACCORDANCE WITH GEOTECHNICAL ENGINEER'S RECOMMENDATIONS.

Single Source. Sound Solutions.
www.thesigmagroup.com
1300 West Canal Street
Milwaukee, WI 53233
Phone: 414-643-4200
Fax: 414-643-4210

GRAPHIC SCALE
0 40 80

PRELIMINARY NOT FOR CONSTRUCTION

IRGENS RESEARCH DRIVE PHASE II

10701 RESEARCH DRIVE

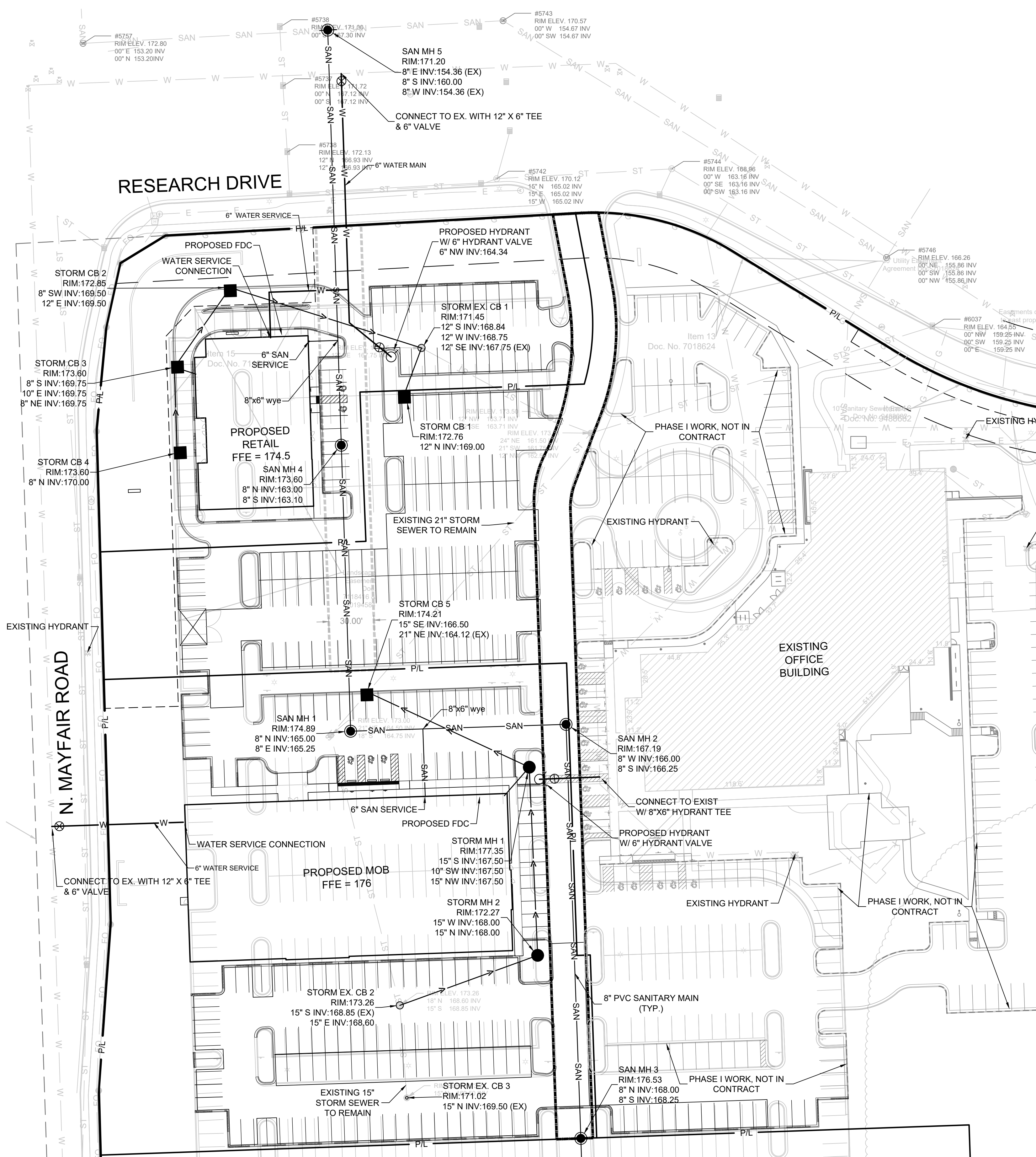
WAUWATOSEA, WI 53226

GRADING PLAN

ISSUANCE	DATE
SD SET	04/20/2022
UPDATED CIVIL PRICING SET	06/24/2022
---	---

NO. REVISION	DATE
----	----
----	----
----	----
----	----
----	----

SCALE:	1"=40'
PROJECT NO:	20166
DESIGN DATE:	----
PLOT DATE:	2023.01.24
DRAWN BY:	----
CHECKED BY:	CTC
APPROVED BY:	----
SHEET NO:	C200



CALL DIGGERS HOTLINE
1-800-242-8511
TOLL FREE

WE STATE (60.076/1974)
REQUIRES MIN. 3 WORK DAYS
NOTICE BEFORE YOU EXCAVATE
MILW. AREA 259-1181

THE UNDERGROUND UTILITY INFORMATION SHOWN ON THIS MAP IS BASED
ON FIELD MARKINGS AND INFORMATION FURNISHED BY UTILITY
COMPANIES AND THE LOCAL MUNICIPALITY. WHILE THIS INFORMATION IS
BELIEVED TO BE RELIABLE, ITS ACCURACY AND COMPLETENESS CANNOT
BE GUARANTEED.

LEGEND:

- W PROPOSED WATER SERVICE
- SAN PROPOSED SANITARY SERVICE
- PROPOSED STORM SEWER
- PROPOSED STORM INLET
- PROPOSED STORM MANHOLE
- PROPOSED FLARED END SECTION
- PROPOSED HYDRANT ASSEMBLY
- PROPOSED SANITARY MANHOLE

GENERAL NOTES:

- THE UNDERGROUND UTILITY INFORMATION SHOWN ON THIS DRAWING IS BASED ON FIELD LOCATIONS AND/OR RECORDS FURNISHED BY MUNICIPALITIES AND UTILITY COMPANIES. THE LOCATION AND ACCURACY OF WHICH CANNOT BE GUARANTEED. THERE MAY BE ADDITIONAL UNDERGROUND UTILITY INSTALLATIONS WITHIN THE PROJECT AREA THAT ARE NOT SHOWN.
- VERIFY ACTUAL LOCATIONS AND INVERTS IN THE FIELD. ANY POTENTIAL ERRORS, OMISSIONS, OR DISCREPANCIES SHALL BE BROUGHT TO THE ATTENTION OF THE ENGINEER PRIOR TO PROCEEDING WITH CONSTRUCTION.
- WORK TO BE COMPLETED IS INDICATED IN BOLD TYPE LINES AND EXISTING CONDITIONS ARE INDICATED BY LIGHT TYPE LINES.
- ELECTRONIC CIVIL FILES ARE AVAILABLE UPON WRITTEN REQUEST. DO NOT USE ELECTRONIC CIVIL FILES TO LAYOUT FOUNDATIONS, COLUMN LINES, LIGHT POLES, OR OTHER NON CIVIL SITE WORK. REFER TO ARCHITECTURAL DRAWINGS FOR DIMENSIONS OF BUILDING AND ARCHITECTURAL FEATURES.
- ALL UTILITIES WITHIN 5 FEET OF PAVED AREAS SHALL REQUIRE GRANULAR BACKFILL. SLURRY BACKFILL IS REQUIRED FOR ALL WORK IN PUBLIC RIGHT OF WAY.
- PRIVATE STORM INLETS IN PAVEMENT SHALL REQUIRE DRAIN TILE STUBS OF 10 FEET IN TWO DIRECTIONS FOR SUBDRAINAGE. RIM GRADE FOR STORM INLETS IN CURB AND GUTTER ARE FLOW LINE GRADES.
- WORK IN PUBLIC RIGHT OF WAY SHALL FOLLOW MATERIAL AND INSTALLATION REQUIREMENTS PER MUNICIPAL AND/OR COUNTY.
- PRIVATE STORM SEWER 12-INCH DIAMETER OR LARGER SHALL BE HDPE. BELOW 12-INCH DIAMETER SHALL BE PVC SDR-35 ASTM D3034. PRIVATE WATER MAIN SHALL BE CLASS 235 DR 18 PVC CONFORMING TO AWWA C-900. PRIVATE SANITARY SEWER SHALL BE PVC SDR-35 ASTM D3034.
- COORDINATE FINAL LOCATION AND DESIGN OF PRIVATE UTILITY SERVICES (ELECTRIC, GAS, PHONE, CABLE) WITH UTILITY COMPANIES.
- IF PROJECT IS DESIGN BUILD MEP, THE GENERAL CONTRACTOR IS REQUIRED TO PROVIDE FINAL SEWER AND WATER DESIGN SHOWING LOCATION, INVERTS AND SIZES TO THE ENGINEER FOR FINAL REVIEW AND VERIFICATION PRIOR TO STARTING UNDERGROUND UTILITY CONSTRUCTION.
- WATER MAIN CONNECTION: TAP WATER MAIN WITH SIZE AND LOCATION INDICATED ON PLAN IN ACCORDANCE WITH LOCAL WATER UTILITY REQUIREMENTS. COORDINATE CONNECTION WITH LOCAL WATER UTILITY. ALL JOINTS HALL BE RESTRAINED FROM CONNECTION OF WATER MAIN TO BUILDING WALL. SUBMIT JOINT RESTRAINT DETAILS FOR ALL JOINT TYPES INCLUDING PUSH-ON AND MECHANICAL CONNECTIONS. INSTALL MEGA-LUG OR APPROVED EQUAL TIGHT TO WALL FOR RESTRAINT FOR ALL BUILDING WALL PENETRATIONS AS APPROVED BY LOCAL PLUMBING INSPECTOR AND WATER UTILITY. INSTALL THRUST BLOCKING AND MEGA-LUG AT BEND BELOW FLOOR FOR ALL FLOOR PENETRATIONS.
- INSTALL JOINT RESTRAINT AND CONCRETE THRUST BLOCKS AT ALL OFFSET FITTINGS (TEES, BENDS, DEAD ENDS, VALVES, REDUCERS) USING MEGA-LUG OR APPROVED EQUAL. CONCRETE THRUST BLOCKS SHALL BE INSTALLED PER FILE NO'S 44.45.46 FROM THE STANDARD SPECIFICATIONS FOR SEWER AND WATER CONSTRUCTION IN WISCONSIN. SEE DETAIL FOR MINIMUM LENGTH OF RESTRAINED JOINT REQUIRED. SUBMIT JOINT RESTRAINT DETAILS FOR ALL JOINT TYPES INCLUDING PUSH-ON AND MECHANICAL CONNECTIONS.

THE SIGMA GROUP
Single Source. Sound Solutions.
www.thesigmagroup.com
1300 West Canal Street
Milwaukee, WI 53233
Phone: 414-643-4200
Fax: 414-643-4210



GRAPHIC SCALE
0 40 80

PRELIMINARY NOT FOR CONSTRUCTION

IRGENS RESEARCH DRIVE PHASE II

10701 RESEARCH DRIVE

WAUWATOSEA, WI 53226

UTILITY PLAN

ISSUANCE	DATE
SD SET	04/20/2022
UPDATED CIVIL PRICING SET	06/24/2022
---	---

NO. REVISION	DATE
--------------	------

SD SET	3/01/2022
--------	-----------

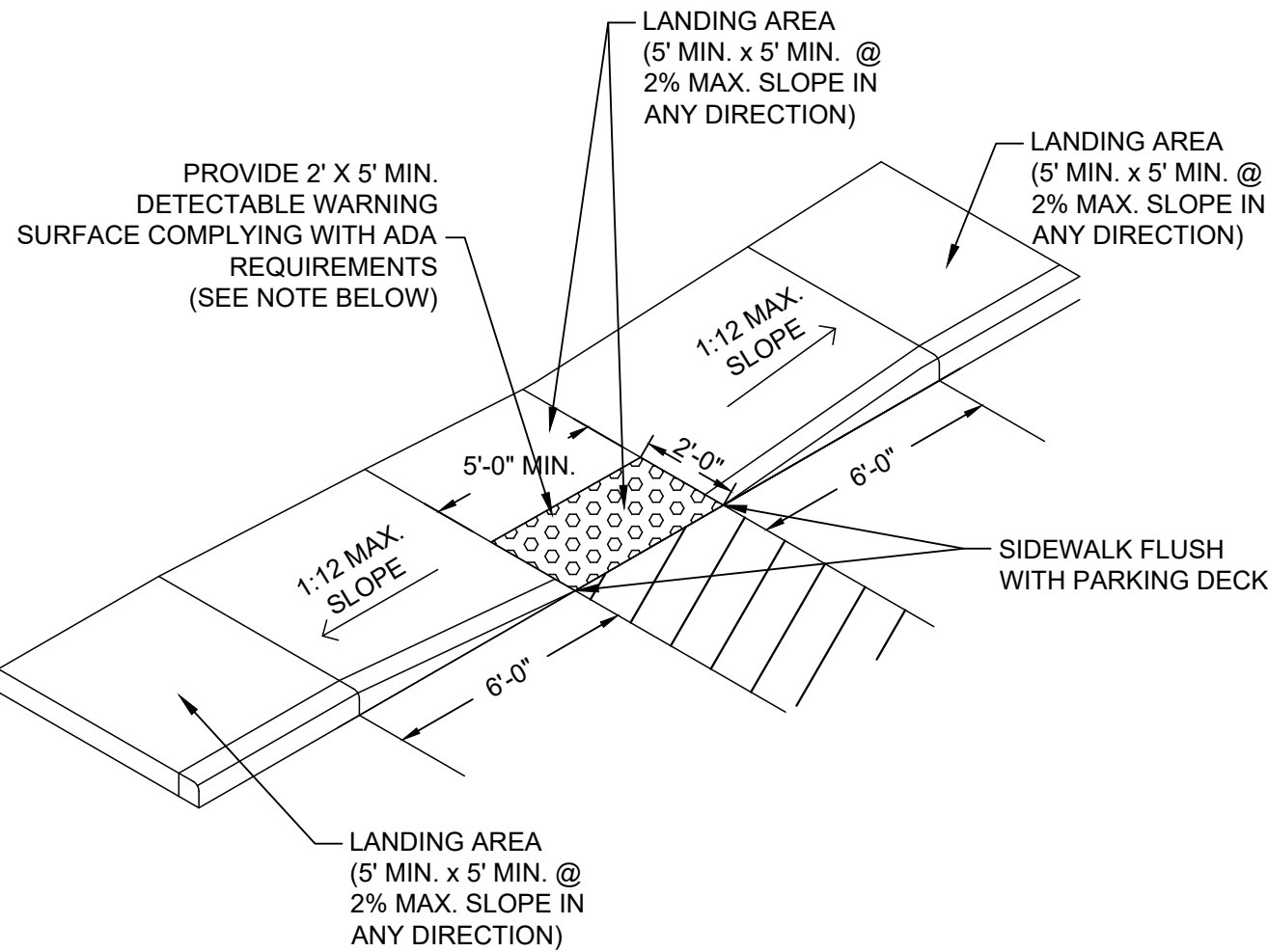
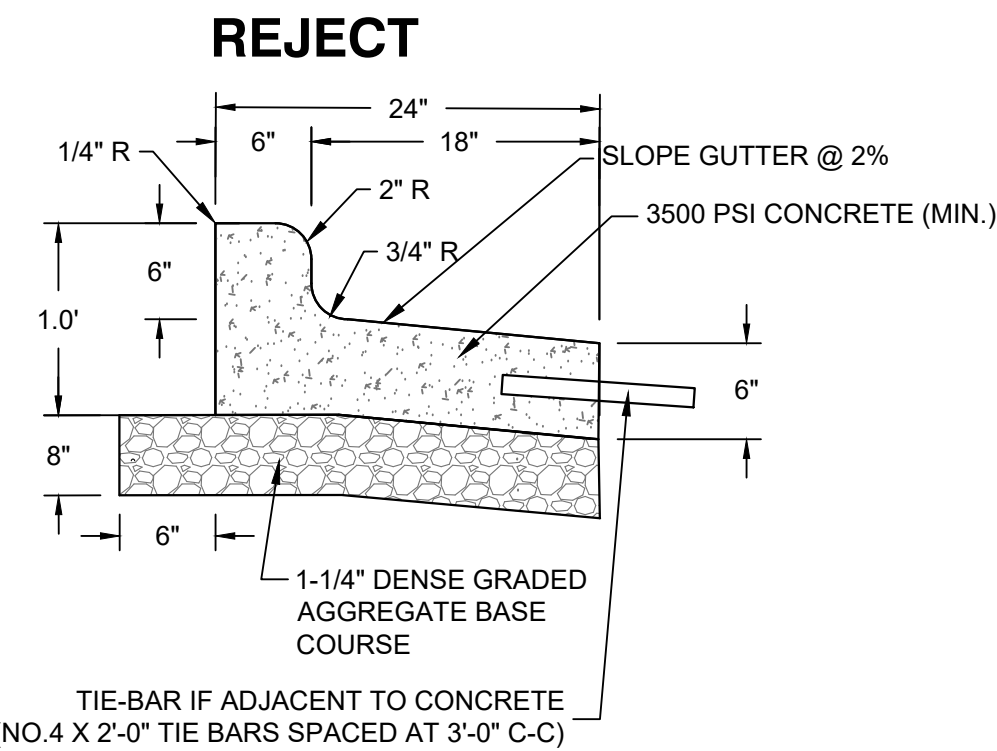
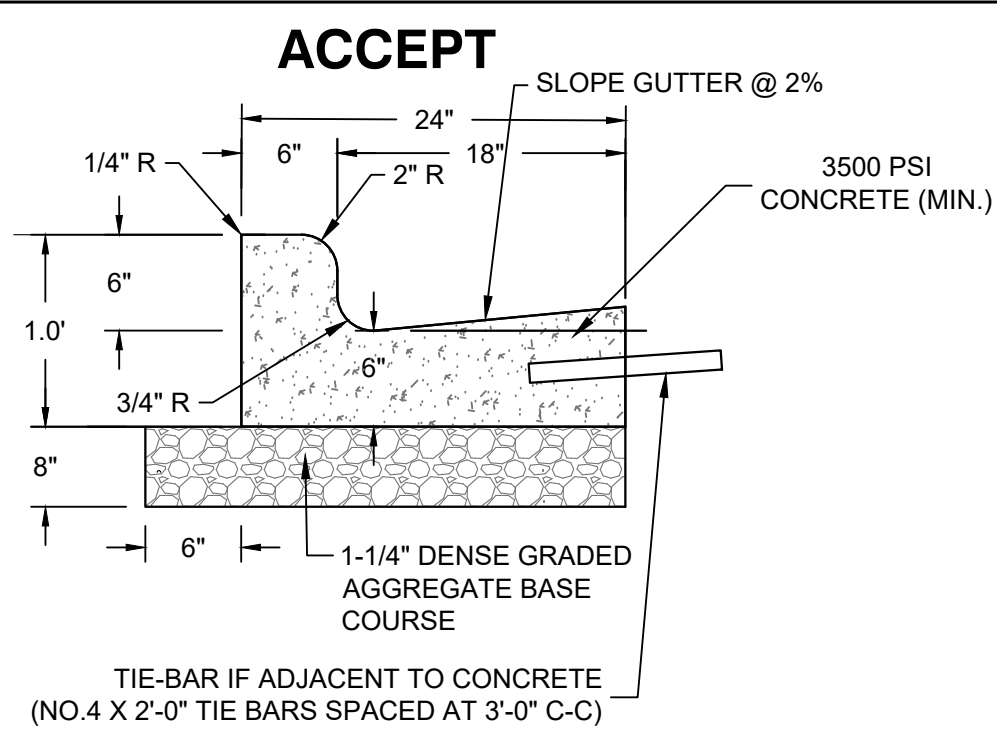
SCALE:	1"=40'
PROJECT NO:	20166
DESIGN DATE:	----
PLOT DATE:	2023.01.24
DRAWN BY:	----
CHECKED BY:	CTC
APPROVED BY:	----
SHEET NO:	C300

2023.01.24

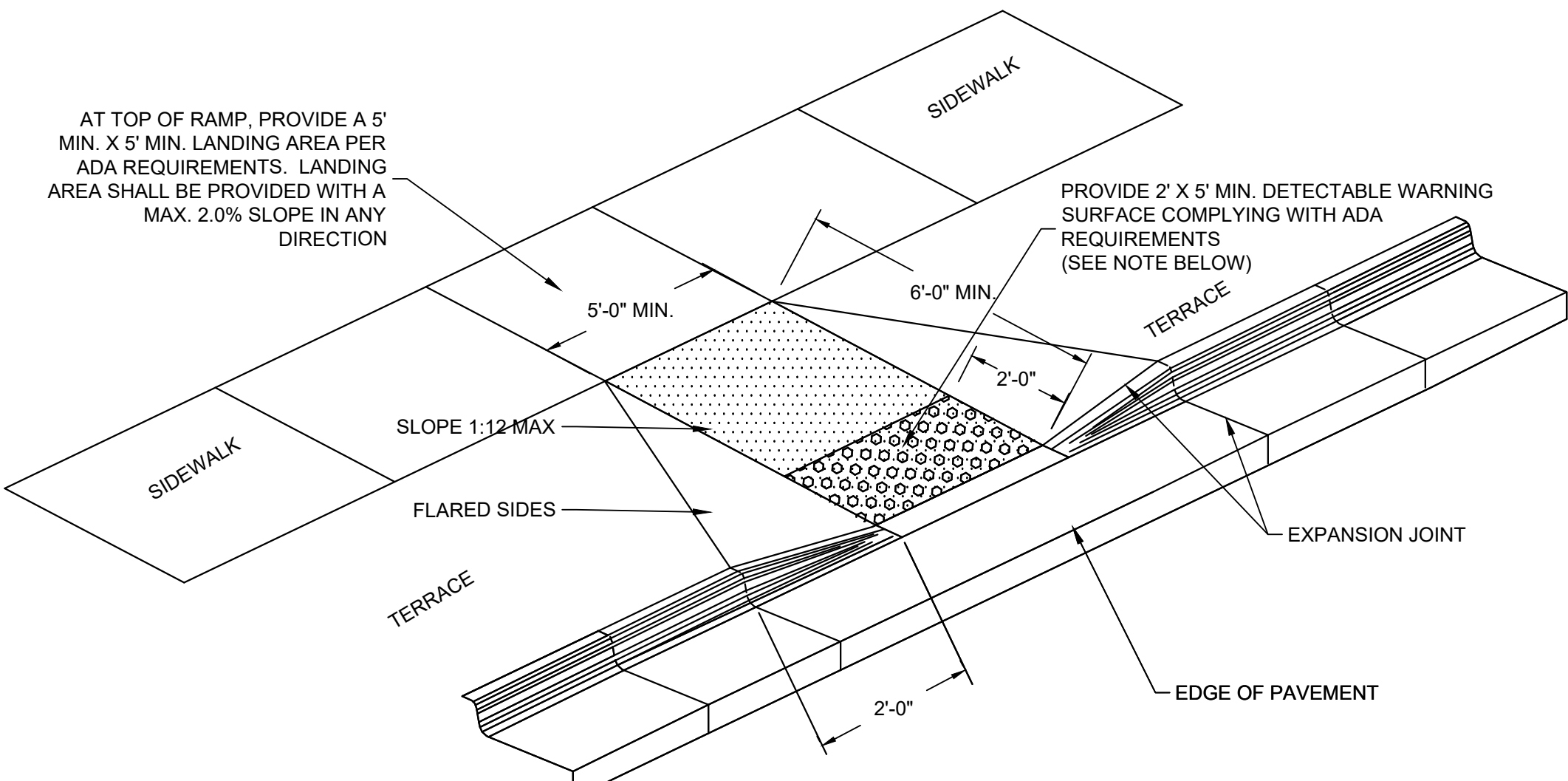
CWELLER

C-401

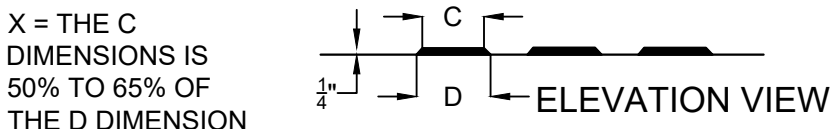
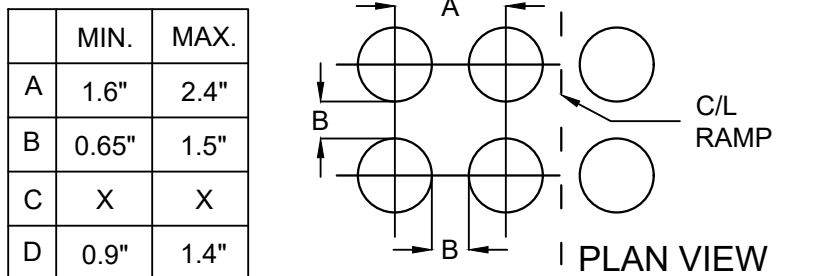
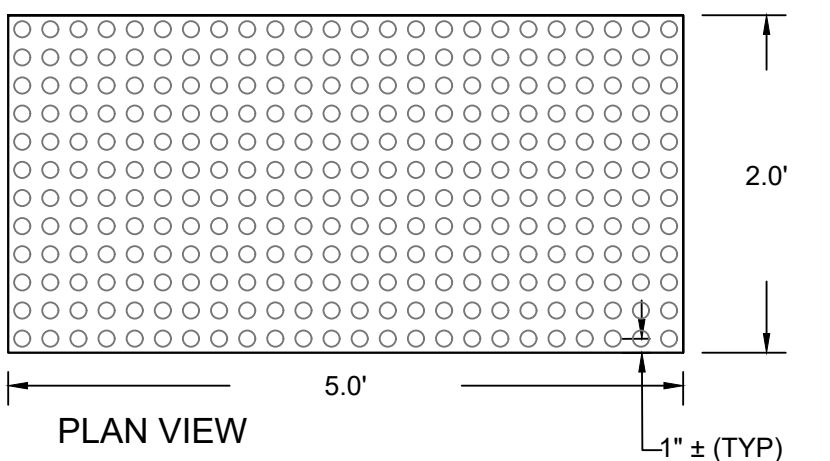
20166



- NOTES:
1. CONTRACTOR TO VERIFY ADA RAMP DETAIL WITH CITY AND ADJUST AS NEEDED.
 2. PROVIDE DETECTABLE WARNING CONSISTING OF RAISED TRUNCATED DOMES OF SIZE, SPACING AND CONTRAST REQUIRED BY ADA GUIDELINES.
 3. DETECTABLE WARNINGS SHALL BE PER CITY STANDARDS.

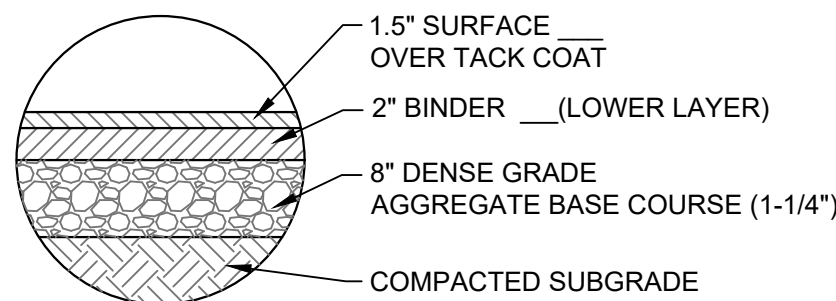


- NOTES:
1. CONTRACTOR TO VERIFY ADA RAMP DETAIL WITH CITY AND ADJUST AS NEEDED.
 2. PROVIDE DETECTABLE WARNING CONSISTING OF RAISED TRUNCATED DOMES OF SIZE, SPACING AND CONTRAST REQUIRED BY ADA GUIDELINES.
 3. DETECTABLE WARNINGS SHALL BE PER CITY STANDARDS.

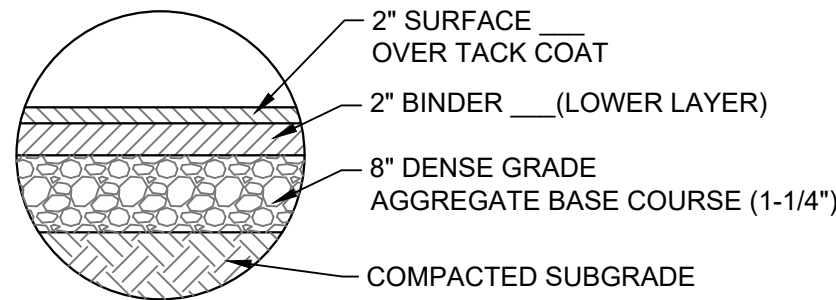


D) TRUNCATED DOMES
SCALE: NTS

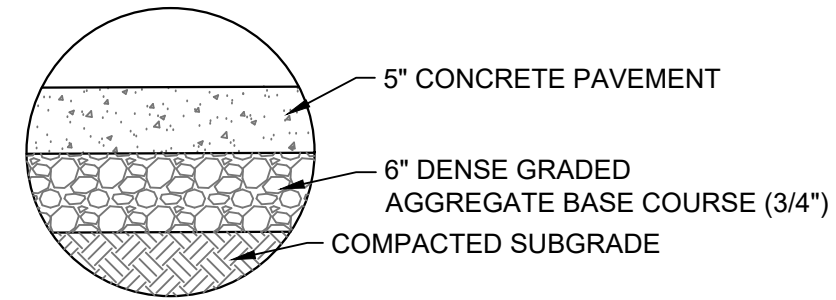
A) 24 INCH CURB
SCALE: NTS



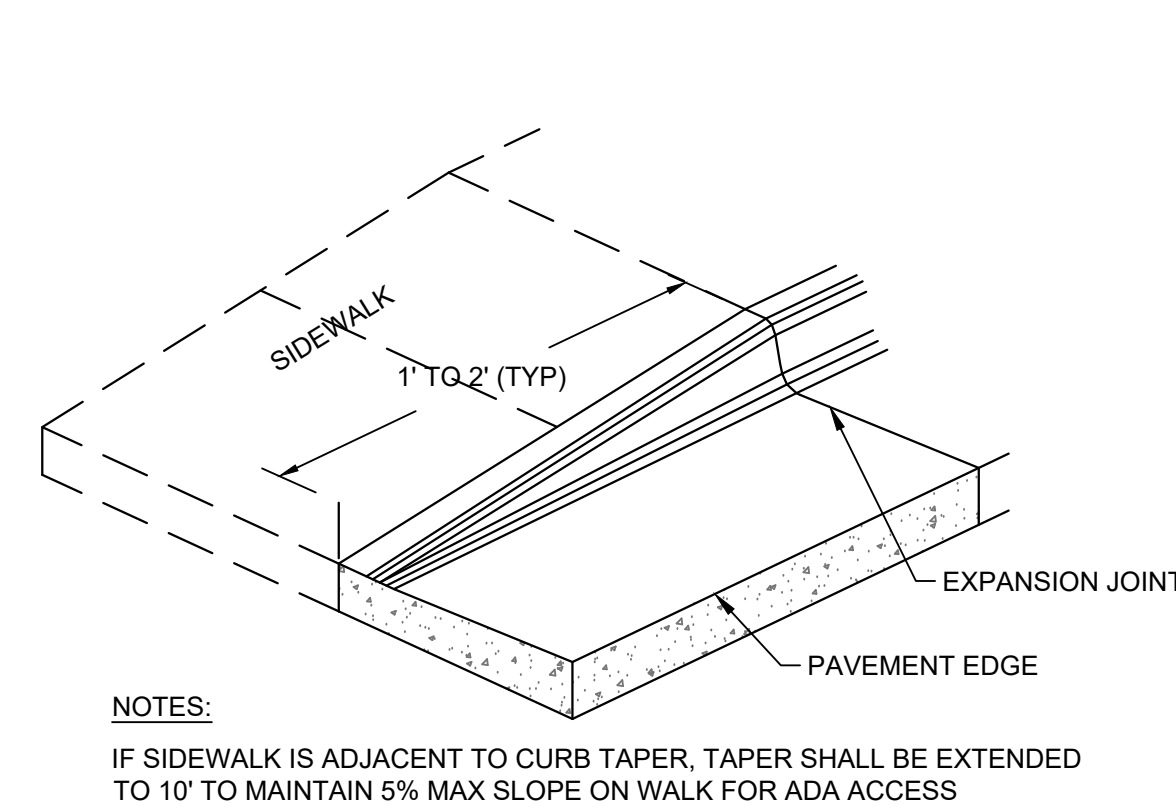
E) ASPHALT PAVEMENT
SCALE: NTS



F) ASPHALT PAVEMENT HEAVY DUTY
SCALE: NTS

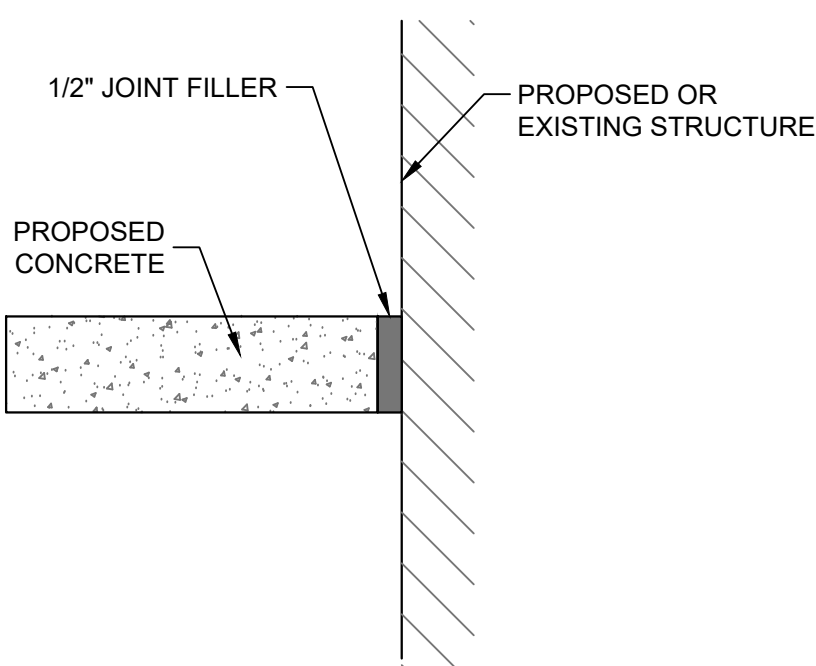


G) CONCRETE SIDEWALK
SCALE: NTS

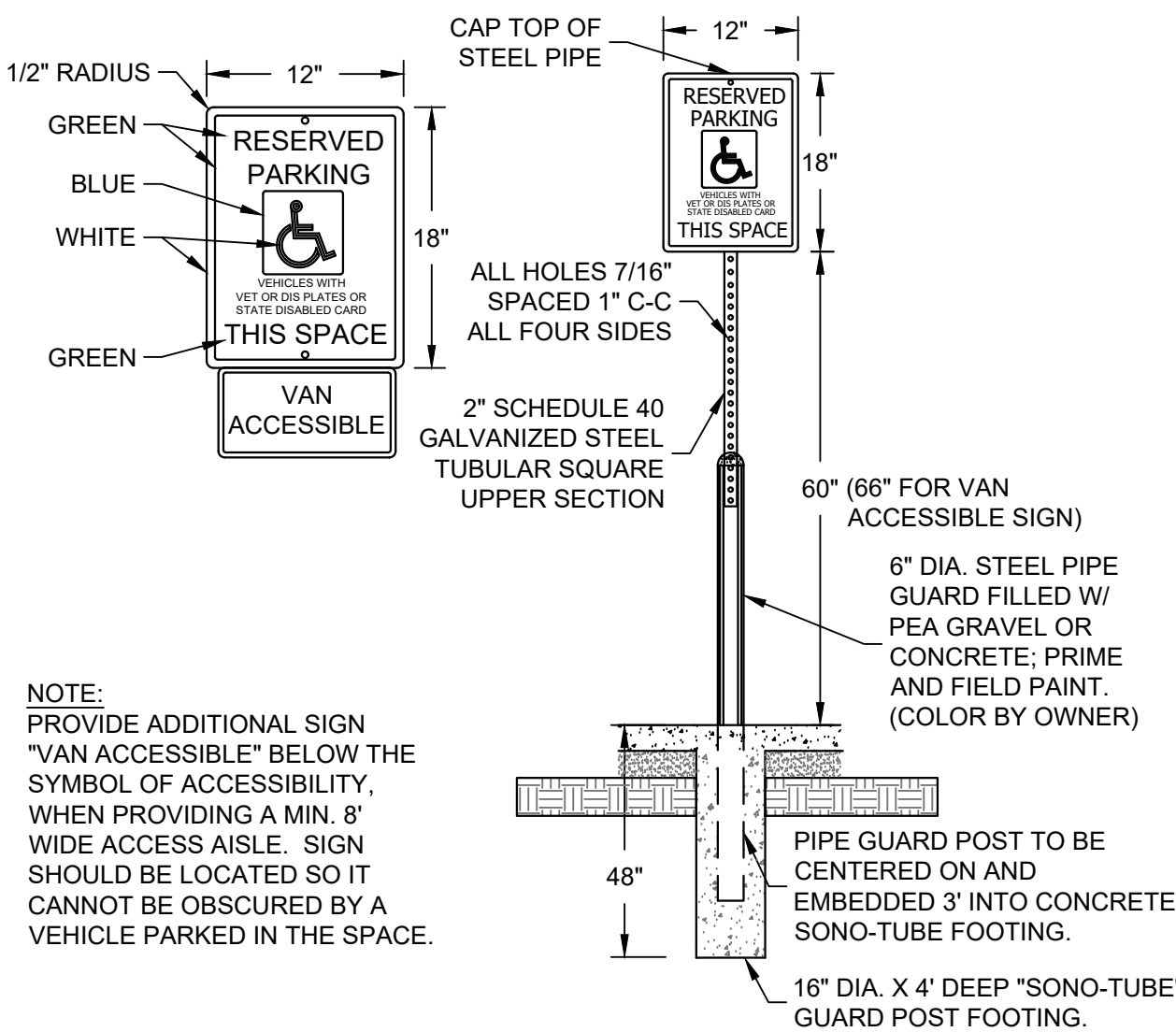


I) CURB TAPER
SCALE: NTS

B) ADA RAMP TYPE 1
SCALE: NTS

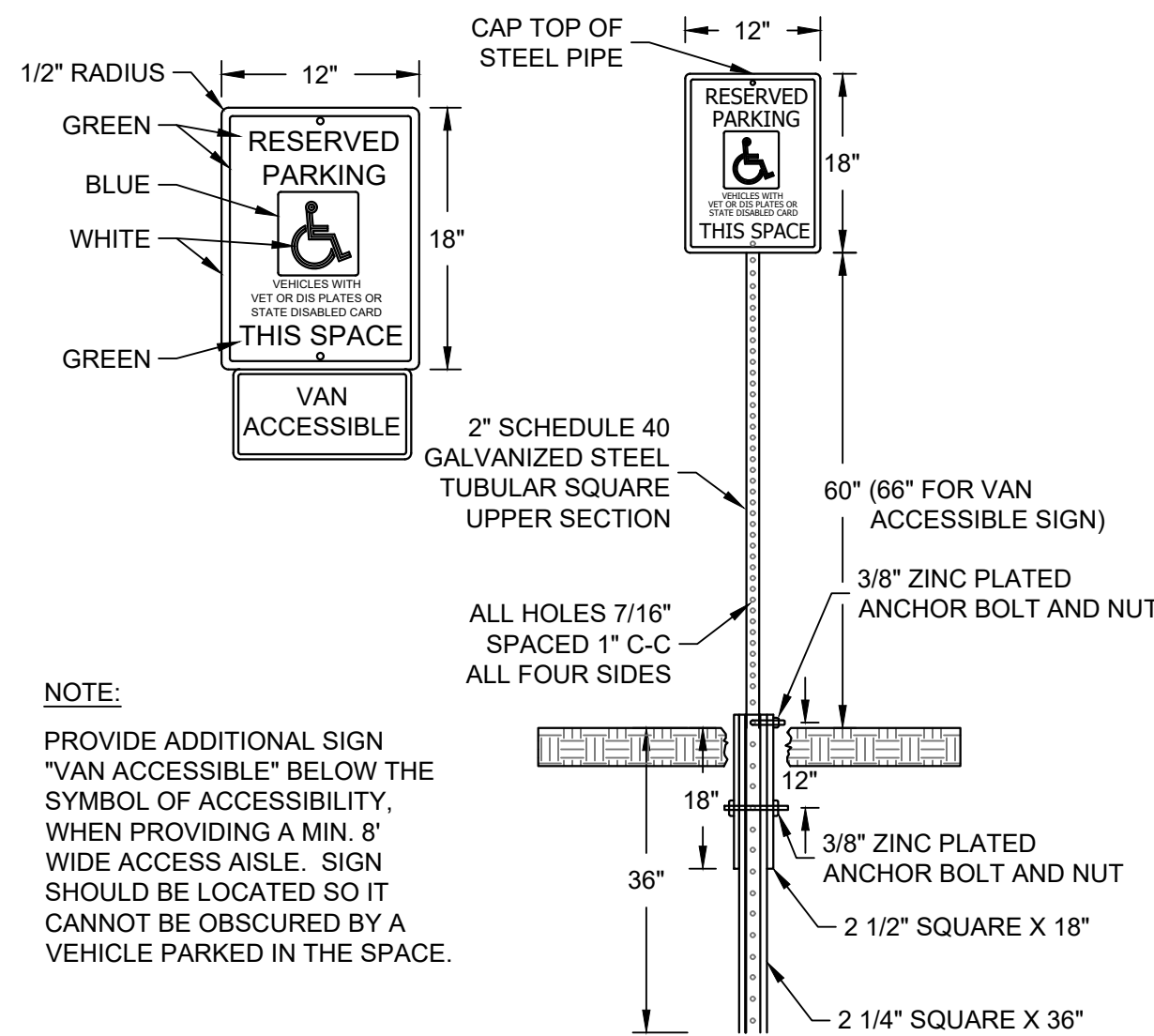


H) CONCRETE JOINT-ISOLATION
SCALE: NTS



J) HANDICAP SIGN AND BOLLARD POST
SCALE: NTS

C) ADA RAMP TYPE 2
SCALE: NTS



K) HANDICAP SIGN AND POST
SCALE: NTS

PRELIMINARY NOT FOR CONSTRUCTION

IRGENS RESEARCH DRIVE PHASE II

10701 RESEARCH DRIVE

WAUWATOSEA, WI 53226

DETAILS

ISSUANCE	DATE
SD SET	04/20/2022
UPDATED CIVIL PRICING SET	06/24/2022
---	---

NO. REVISION	DATE
---	---
---	---
---	---
---	---
---	---

SCALE:	
PROJECT NO:	20166
DESIGN DATE:	---
PLOT DATE:	2023.01.24
DRAWN BY:	---
CHECKED BY:	CTC
APPROVED BY:	---
SHEET NO:	

C401

GENERAL:

- 1. EXISTING UTILITIES ARE SHOWN FOR INFORMATIONAL PURPOSES ONLY, AND NO RESPONSIBILITY IS ASSUMED BY THE OWNER OR ENGINEER FOR THEIR ACCURACY OR COMPLETENESS.
- 2. CONTRACTOR IS RESPONSIBLE FOR MAKING THEIR OWN DETERMINATION AS TO THE TYPE AND LOCATION OF UNDERGROUND UTILITIES AS MAY BE NECESSARY TO AVOID DAMAGE THERETO. CONTRACTOR SHALL HAVE SITE MARKED BY DIGGER'S HOTLINE AND SHALL HAVE PRIVATE UTILITIES MARKED BY A PRIVATE UTILITY LOCATOR PRIOR TO CONSTRUCTION. CONTRACTOR SHALL VERIFY ALL ELEVATIONS, LOCATIONS, AND SIZES OF EXISTING UTILITIES AND SHALL CHECK ALL UTILITY CROSSINGS AND PROPOSED CONNECTIONS FOR CONFLICTS/DISCREPANCIES PRIOR TO INITIATING CONSTRUCTION. REPORT ANY CONFLICTS OR DISCREPANCIES TO THE ENGINEER SO REDESIGN MAY OCCUR IF NEEDED.
- 3. LENGTHS OF ALL UTILITIES ARE TO CENTER OF STRUCTURES OR FITTINGS AND MAY VARY SLIGHTLY FROM PLANS. LENGTHS SHALL BE VERIFIED IN THE FIELD BY THE CONTRACTOR.

SITE CLEARING:

- 1. EXCEPT FOR STRIPPED TOPSOIL OR OTHER MATERIALS INDICATED TO REMAIN ON OWNER'S PROPERTY, CLEARED MATERIALS SHALL BECOME CONTRACTOR'S PROPERTY AND SHALL BE REMOVED FROM PROJECT SITE.
- 2. MINIMIZE INTERFERENCE WITH ADJOINING ROADS, STREETS, WALKS, AND OTHER ADJACENT OCCUPIED OR USED FACILITIES DURING SITE-CLEARING OPERATIONS.
- 3. SALVABLE IMPROVEMENTS: CAREFULLY REMOVE ITEMS INDICATED TO BE SALVAGED AND STORE ON OWNER'S PREMISES WHERE INDICATED.
- 4. UTILITY LOCATOR SERVICE: NOTIFY UTILITY LOCATOR SERVICE FOR AREA WHERE PROJECT IS LOCATED BEFORE SITE CLEARING.
- 5. DO NOT COMMENCE SITE CLEARING OPERATIONS UNTIL TEMPORARY EROSION AND SEDIMENTATION CONTROL MEASURES ARE IN PLACE.
- 6. PROTECT AND MAINTAIN BENCHMARKS AND SURVEY CONTROL POINTS FROM DISTURBANCE DURING CONSTRUCTION.
- 7. LOCATE AND CLEARLY FLAG TREES AND VEGETATION TO REMAIN OR TO BE RELOCATED.
- 8. PROTECT EXISTING SITE IMPROVEMENTS TO REMAIN FROM DAMAGE DURING CONSTRUCTION; RESTORE DAMAGED IMPROVEMENTS TO THEIR ORIGINAL CONDITION, AS ACCEPTABLE TO OWNER.
- 9. LOCATE, IDENTIFY, DISCONNECT, AND SEAL OR CAP OFF UTILITIES INDICATED TO BE REMOVED; ARRANGE WITH UTILITY COMPANIES TO SHUT OFF INDICATED UTILITIES.
- 10. EXISTING UTILITIES: DO NOT INTERRUPT UTILITIES SERVING FACILITIES OCCUPIED BY OWNER OR OTHERS UNLESS PERMITTED BY THE OWNER AND THEN ONLY AFTER ARRANGING TO PROVIDE TEMPORARY UTILITY SERVICES.
- 11. FILL DEPRESSIONS CAUSED BY CLEARING AND GRUBBING OPERATIONS WITH SATISFACTORY SOIL MATERIAL UNLESS FURTHER EXCAVATION OR EARTHWORK IS INDICATED; PLACE FILL MATERIAL IN HORIZONTAL LAYERS NOT EXCEEDING A LOOSE DEPTH OF 8 INCHES, AND COMPACT EACH LAYER TO A DENSITY EQUAL TO ADJACENT ORIGINAL GROUND.
- 12. REMOVE SOD AND GRASS BEFORE STRIPPING TOPSOIL.
- 13. STRIP TOPSOIL TO WHATEVER DEPTHS ARE ENCOUNTERED IN A MANNER TO PREVENT INTERMINGLING WITH UNDERLYING SUBSOIL OR OTHER WASTE MATERIALS.
- 14. STOCKPILE TOPSOIL MATERIALS AWAY FROM EDGE OF EXCAVATIONS WITHOUT INTERMIXING WITH SUBSOIL. GRADE AND SHAPE STOCKPILES TO DRAIN SURFACE WATER. COVER TO PREVENT WINDBLOWN DUST.
- 15. REMOVE EXISTING ABOVE- AND BELOW-GRADE IMPROVEMENTS AS INDICATED AND AS NECESSARY TO FACILITATE NEW CONSTRUCTION.
- 16. SAWCUT ALL PAVEMENTS FULL DEPTH PRIOR TO REMOVAL; SAWCUTS SHALL BE IN STRAIGHT LINES PERPENDICULAR AND/OR PARALLEL TO EXISTING PAVEMENT JOINTS AND PAVEMENT EDGES.
- 17. REMOVE SURPLUS SOIL MATERIAL, UNSUITABLE TOPSOIL, OBSTRUCTIONS, DEMOLISHED MATERIALS, AND WASTE MATERIALS INCLUDING TRASH AND DEBRIS, AND LEGALLY DISPOSE OF THEM OFF OWNER'S PROPERTY.
- 18. SEPARATE RECYCLABLE MATERIALS PRODUCED DURING SITE CLEARING FROM OTHER NONRECYCLABLE MATERIALS. STORE OR STOCKPILE WITHOUT INTERMIXING WITH OTHER MATERIALS AND TRANSPORT THEM TO RECYCLING FACILITIES.

SITE WATER SERVICE:

- 1. COMPLY WITH STANDARDS OF STATE PLUMBING CODE (SPS CH. 382, 384), LOCAL WATER UTILITY REQUIREMENTS AND STANDARDS OF AUTHORITIES HAVING JURISDICTION FOR FIRE-SUPPRESSION AND WATER SERVICE PIPING INCLUDING MATERIALS, FITTINGS, APPURTENANCES, INSTALLATION, TESTING, SERVICE TAPS, ETC. IN CASE OF CONFLICT BETWEEN THESE SPECIFICATIONS AND STATE PLUMBING CODE OR LOCAL JURISDICTIONAL AUTHORITY, STATE PLUMBING CODE AND LOCAL JURISDICTIONAL AUTHORITY REQUIREMENTS GOVERN.
- 2. DO NOT INTERRUPT SERVICE TO FACILITIES OCCUPIED BY OWNER OR OTHERS UNLESS PERMITTED BY OWNERS OF SUCH FACILITIES AND THEN ONLY AFTER ARRANGING TO PROVIDE TEMPORARY WATER-DISTRIBUTION SERVICE.
- 3. WATER SERVICE PIPING MAY BE EITHER DUCTILE IRON WATER PIPE OR PVC WATER PIPE AS ALLOWED BY THE LOCAL WATER UTILITY.
- 4. DUCTILE IRON WATER PIPE CONFORMING TO THE REQUIREMENTS OF THE AMERICAN NATIONAL STANDARD FOR DUCTILE IRON PIPE, CENTRIFUGALLY CAST, AWWA C151/A21.51 - LATEST REVISION AND REQUIREMENTS OF CHAPTER 8.18.0 OF THE STANDARD SPECIFICATIONS FOR SEWER AND WATER CONSTRUCTION IN WISCONSIN, LATEST EDITION.
 - a. CLASS 52
 - b. CEMENT MORTAR LINING AND INTERNAL AND EXTERNAL BITUMINOUS COATS IN ACCORDANCE WITH SECTION 51.8 OF AWWA C151.
 - c. PUSH-ON GASKET PIPE
 - d. PLAIN RUBBER GASKETS
 - e. BONDING STRAPS TO PROVIDE ELECTRICAL CONDUCTIVITY WITHOUT FIELD TESTING
- 5. JOINTS FOR DUCTILE IRON PIPE: JOINTS SHALL BE RUBBER GASKET JOINTS; CONFORM TO THE REQUIREMENTS OF AMERICAN NATIONAL STANDARD FOR RUBBER GASKET JOINTS FOR DUCTILE IRON PRESSURE PIPE AND FITTINGS (ANSI/AWWA C111/A21.11, LATEST EDITION)
- 6. FITTINGS FOR DUCTILE IRON PIPE: CONFORM TO THE REQUIREMENTS OF AMERICAN NATIONAL STANDARD FOR DUCTILE IRON AND GRAY IRON FITTINGS, 3" THROUGH 48" FOR WATER ANSI/AWWA C110/A21.10, LATEST EDITION); CLASS 250 MECHANICAL JOINT PIPE FITTINGS; CEMENT LINED; ALL BELLS; ENTIRE FITTING TARRED; CONDUCTIVE MECHANICAL JOINT (NO LEAD) RUBBER GASKETS, FLANGES, AND BOLTS.
- 7. PVC AWWA PIPE: AWWA C900, CLASS 235 WITH BELL END WITH GASKET AND WITH SPIGOT END AND MEETING REQUIREMENTS OF CHAPTER 8.20.0 OF THE STANDARD SPECIFICATIONS FOR SEWER AND WATER CONSTRUCTION IN WISCONSIN. FITTINGS SHALL BE IN ACCORDANCE WITH CHAPTER 8.22.0 OF THE STANDARD SPECIFICATIONS FOR SEWER AND WATER CONSTRUCTION IN WISCONSIN. MECHANICAL JOINT, DUCTILE IRON FITTINGS: AWWA C163, DUCTILE-IRON COMPACT PATTERN. GLANDS, GASKETS AND BOLTS: AWWA C111, DUCTILE IRON GLANDS, RUBBER GASKETS AND STEEL BOLTS.
- 8. GATE VALVES: CONFORM TO AWWA C-500 AND STANDARD SPECIFICATIONS FOR SEWER AND WATER CONSTRUCTION IN WISCONSIN SUITABLE FOR DIRECT BURY.
- 9. VALVE BOXES: CAST IRON CONFORMING TO ASTM DESIGNATION A-48, CLASS 20 AND STANDARD SPECIFICATIONS FOR SEWER AND WATER CONSTRUCTION IN WISCONSIN.
- 10. FIRE HYDRANTS: TO MEET LOCAL STANDARDS.
- 11. WATER MAIN CONNECTION: TAP WATER MAIN WITH SIZE AND LOCATION INDICATED ON PLAN IN ACCORDANCE WITH LOCAL WATER UTILITY REQUIREMENTS. COORDINATE CONNECTION WITH LOCAL WATER UTILITY. ALL JOINTS HALL BE RESTRAINED FROM CONNECTION OF WATER MAIN TO BUILDING WALL. SUBMIT JOINT RESTRAINT DETAILS FOR ALL JOINT TYPES INCLUDING PUSH-ON AND MECHANICAL CONNECTIONS. INSTALL MEGA-LUG OR APPROVED EQUAL TIGHT TO WALL FOR RESTRAINT FOR ALL BUILDING WALL PENETRATIONS AS APPROVED BY LOCAL PLUMBING INSPECTOR AND WATER UTILITY. INSTALL THRUST BLOCKING AND MEGA-LUG AT BEND BELOW FLOOR FOR ALL FLOOR PENETRATIONS
- 12. GENERAL WATER PIPE INSTALLATION: IN ACCORDANCE WITH CHAPTER 4.3.0 OF THE STANDARD SPECIFICATIONS FOR SEWER AND WATER CONSTRUCTION IN WISCONSIN.
- 13. INSTALL DUCTILE-IRON, WATER-SERVICE PIPING ACCORDING TO AWWA C600 AND CHAPTER 4.4.0 OF THE STANDARD SPECIFICATIONS FOR SEWER AND WATER CONSTRUCTION IN WISCONSIN.
- 14. ALL DUCTILE IRON PIPE SHALL BE ENCASED IN POLYETHYLENE PER AWWA C105, LATEST EDITION AND IN ACCORDANCE WITH CHAPTER 4.4.4 OF THE STANDARD SPECIFICATIONS FOR SEWER AND WATER CONSTRUCTION IN WISCONSIN. ALL JOINTS AND FITTINGS SHALL HAVE POLYETHYLENE ENCASEMENT INSTALLED PER MANUFACTURER'S REQUIREMENTS AND PROCEDURES.
- 15. INSTALL PVC AWWA PIPE ACCORDING TO ASTM F645 AND AWWA M23 AND CHAPTER 4.6.0 OF THE STANDARD SPECIFICATIONS FOR SEWER AND WATER CONSTRUCTION IN WISCONSIN.
- 16. INSTALL JOINT RESTRAINT AND CONCRETE THRUST BLOCKS AT ALL OFFSET FITTINGS (TEES, BENDS, DEAD ENDS, VALVES, REDUCERS) USING MEGA-LUG OR APPROVED EQUAL. CONCRETE THRUST BLOCKS SHALL BE INSTALLED PER FILE NO'S:44,45,46 FROM THE STANDARD SPECIFICATIONS FOR SEWER AND WATER CONSTRUCTION IN WISCONSIN. SEE DETAIL FOR MINIMUM LENGTH OF RESTRAINED JOINT REQUIRED. SUBMIT JOINT RESTRAINT DETAILS FOR ALL JOINT TYPES INCLUDING PUSH-ON AND MECHANICAL CONNECTIONS.INSTALL WATER SERVICE PIPING SUCH THAT THERE IS A MINIMUM OF 6" OF COVER OVER THE TOP OF THE WATER SERVICE PIPING.

SITE WATER SERVICE CONT.:

- 17. BEDDING AND COVER FOR WATER SERVICE PIPING SHALL BE IN ACCORDANCE WITH SECTION 4.3.3 AND FILE NO. 36 OF THE STANDARD SPECIFICATIONS FOR SEWER AND WATER CONSTRUCTION IN WISCONSIN, LATEST EDITION. TRENCH BACKFILL SHALL BE GRANULAR B BACKFILL IN ACCORDANCE WITH SECTION 8.43.4 OF THE STANDARD SPECIFICATIONS FOR SEWER AND WATER CONSTRUCTION IN WISCONSIN, LATEST EDITION ON-SITE.
- 18. INSTALL TRACER WIRE FOR NON-METALLIC WATER SERVICES IN ACCORDANCE WITH SPS SECTION 382.40(8)(K). TRACER WIRE INSULATION COLOR SHALL BE BLUE FOR POTABLE WATER SERVICE PIPING.
- 19. DUCTILE-IRON PIPING, RUBBER GASKETED JOINTS IN ACCORDANCE WITH SECTION 4.4.2 OF THE STANDARD SPECIFICATIONS FOR SEWER AND WATER CONSTRUCTION IN WISCONSIN.
- 20. PVC PIPING GASKETED JOINTS: USING JOINING MATERIALS ACCORDING TO AWWA C900. CONSTRUCT JOINTS WITH ELASTOMERIC SEALS AND LUBRICANTS ACCORDING TO ASTM D2774 OR ASTM D3139 AND PIPE MANUFACTURER'S WRITTEN INSTRUCTIONS.
- 21. CONDUCT HYDROSTATIC TESTS IN ACCORDANCE WITH CHAPTER 4.15.0 OF THE STANDARD SPECIFICATIONS FOR SEWER AND WATER CONSTRUCTION IN WISCONSIN.
- 22. CLEAN AND DISINFECT WATER SERVICE PIPING IN ACCORDANCE WITH SPS CHAPTER 82.40(8)(I) AND AWWA C651.

SANITARY SEWERAGE:

- 1. ALL PRIVATE SANITARY SEWER WORK SHALL BE IN ACCORDANCE WITH THE DEPARTMENT OF SAFETY AND PROFESSIONAL SERVICES (DPS)S PLUMBING CODE - CHAPTERS SPS 382 AND SPS 384 AND LOCAL MUNICIPAL REQUIREMENTS.
- 2. ALL PUBLIC SANITARY SEWER WORK SHALL BE IN ACCORDANCE WITH THE STANDARD SPECIFICATIONS FOR SEWER AND WATER CONSTRUCTION IN WISCONSIN, LATEST EDITION (STANDARD SPECIFICATIONS) AND LOCAL MUNICIPAL REQUIREMENTS.
- 3. PVC SEWER PIPE AND FITTINGS: ASTM D 3034, SDR 35, WITH BELL-AND-SPIGOT ENDS WITH RUBBER GASKETED JOINTS IN ACCORDANCE WITH CHAPTER 8.10.0 OF THE STANDARD SPECIFICATIONS FOR SEWER AND WATER CONSTRUCTION IN WISCONSIN, LATEST EDITION. JOINTS SHALL CONFORM TO ASTM D-3212.
- 4. MANHOLES: STANDARD PRECAST REINFORCED CONCRETE MANHOLES CONFORMING TO ASTM C478, SECTION 8.39.0 OF THE STANDARD SPECIFICATIONS AND CONFORMING TO FILE NOS. 12, 13 AND 15 OF THE STANDARD SPECIFICATIONS. DIAMETER AND DEPTH AS INDICATED ON PLANS. MANHOLE SIZES TO BE VERIFIED BY CONTRACTOR AND SHOP DRAWINGS SHALL BE PROVIDED TO THE ENGINEER FOR REVIEW PRIOR TO ORDERING STRUCTURES.
- 5. MANHOLES DEEPER THAN FOUR FEET SHALL BE PROVIDED WITH MANHOLE STEPS CONFORMING TO SECTION 8.40.0 OF THE STANDARD SPECIFICATIONS.
- 6. SEWERS SHALL BE INSTALLED IN CONFORMANCE WITH SECTION 3.2.0 OF THE STANDARD SPECIFICATIONS. INSTALL PROPER SIZE INCREASERS, REDUCERS AND COUPLINGS WHERE DIFFERENT SIZES OR MATERIALS OF PIPES AND FITTINGS ARE CONNECTED. INSTALL TRACER PIPE OVER NON-METALLIC PIPING IN ACCORDANCE WITH SPS SECTION 382.30(11)(H) AND 382.36(7)(D).
- 7. PIPE JOINT CONSTRUCTION: FOLLOW PIPING MANUFACTURER'S RECOMMENDATIONS; JOIN PVC SEWER PIPE ACCORDING TO ASTM D2321 AND ASTM D 3212 FOR ELASTOMERIC GASKET JOINTS. JOIN DISSIMILAR PIPE MATERIALS WITH NONPRESSURE-TYPE, FLEXIBLE COUPLINGS
- 7. PROVIDE AND INSTALL CLEANOUTS IN ACCORDANCE WITH SPS CHAPTER 382.35. INSTALL CLEANOUTS AND RISER EXTENSIONS FORM SEWER PIPES TO PROPOSED GRADE. INSTALL PIPING SO CLEANOUTS OPEN IN DIRECTION OF FLOW IN SEWER PIPE. USE LIGHT DUTY, TOP LOADING CLASSIFICATION CLEANOUTS IN EARTH OR UNPAVED FOOT TRAFFIC AREAS; USE MEDIUM DUTY, TOP-LOADING CLASSIFICATION CLEANOUTS IN PAVED FOOT TRAFFIC AREAS; USE HEAVY DUTY, TOP-LOADING CLASSIFICATION CLEANOUTS IN VEHICULAR TRAFFIC AREAS. SET CLEANOUT FRAMES AND COVERS IN PAVEMENT AREAS FLUSH WITH PAVEMENT SURFACE.
- 8. CLASS B COMPACTED TRENCH SECTION (FILE NO. NO. 4 OF STANDARD SPECIFICATIONS) SHALL BE UTILIZED. BEDDING AND COVER MATERIAL SHALL BE IN ACCORDANCE WITH SECTION 8.43.0 OF THE STANDARD SPECIFICATIONS.
- 9. TRENCH BACKFILL MATERIAL SHALL BE GRANULAR BACKFILL IN ACCORDANCE WITH SECTION 8.43.4 OF THE STANDARD SPECIFICATIONS BENEATH AND WITHIN FIVE FEET OF PAVEMENT AREAS; COMPACTED SPOIL BACKFILL IN ACCORDANCE WITH SECTION 8.43.5 OF THE STANDARD SPECIFICATIONS MAY BE USED BENEATH LANDSCAPE AREAS.
- 10. MANHOLE INSTALLATION SHALL BE IN ACCORDANCE WITH SECTION 3.5.0 OF THE STANDARD SPECIFICATIONS. SET MANHOLE RIMS TO ELEVATIONS INDICATED ON PLANS.
- 11. AFTER INSTALLATION OF SEWER PIPE CLEAN ALL DEBRIS FROM SEWER AND INSPECT INTERIOR OF PIPING TO DETERMINE WHETHER LINE DISPLACEMENT OR OTHER DAMAGE HAS OCCURRED. CONDUCT DEFLECTION TESTING OF INSTALLED PIPE IN ACCORDANCE WITH SECTION 3.2.6(I)(4 OF THE STANDARD SPECIFICATIONS; REPLACE ANY PIPE SECTION NOT PASSING THE DEFLECTION TESTING USING NEW PIPE MATERIALS. TEST NEW BUILDING SEWER IN ACCORDANCE WITH SECTION 5.4.0 OF THE STANDARD SPECIFICATIONS. REPLACE LEAKING PIPE USING NEW PIPE MATERIALS AAND REPEAT TESTING UNTIL LEAKAGE IS WITHIN ALLOWANCES SPECIFIED.

STORM DRAINAGE:

- 1. ALL PRIVATE STORM SEWER WORK SHALL BE IN ACCORDANCE WITH THE DEPARTMENT OF SAFETY AND PROFESSIONAL SERVICES (DPS)S PLUMBING CODE - CHAPTERS SPS 382 AND SPS 384 AND LOCAL MUNICIPAL REQUIREMENTS.
- 2. ALL PUBLIC STORM SEWER WORK SHALL BE IN ACCORDANCE WITH THE STANDARD SPECIFICATIONS FOR SEWER AND WATER CONSTRUCTION IN WISCONSIN, LATEST EDITION (STANDARD SPECIFICATIONS) AND LOCAL MUNICIPAL REQUIREMENTS.
- 3. PVC SEWER PIPE AND FITTINGS: ASTM D 3034, SDR 35, WITH BELL-AND-SPIGOT ENDS WITH RUBBER GASKETED JOINTS IN ACCORDANCE WITH CHAPTER 8.10.0 OF THE STANDARD SPECIFICATIONS FOR SEWER AND WATER CONSTRUCTION IN WISCONSIN, LATEST EDITION. JOINTS SHALL CONFORM TO ASTM D-3212.
- 4. REINFORCED CONCRETE PIPE: ASTM C76 WITH BELL AND SPIGOT ENDS AND GASKETED JOINTS WITH ASTM C443 RUBBER GASKETS IN ACCORDANCE WITH CHAPTER 8.6.0 OF THE STANDARD SPECIFICATIONS FOR SEWER AND WATER CONSTRUCTION IN WISCONSIN, LATEST EDITION.
- 5. HDPE PIPE: ADS N12 PIPE AS APPROVED ON THE DEPARTMENT OF SAFETY AND PROFESSIONAL SERVICES PLUMBING PRODUCT REGISTER.
- 6. CATCH BASINS: STANDARD PRECAST CONCRETE CATCH BASINS CONFORMING TO CHAPTER 3.6.0 OF THE STANDARD SPECIFICATIONS AND IN GENERAL CONFORMANCE WITH FILE NO. 26 OF THE STANDARD SPECIFICATIONS. DEPTH AND DIAMETER AS INDICATED ON PLANS. CATCH BASIN SIZES TO BE VERIFIED BY CONTRACTOR AND SHOP DRAWINGS SHALL BE PROVIDED TO THE ENGINEER FOR REVIEW PRIOR TO ORDERING STRUCTURES.
- 7. FRAMES AND GRATES: AS INDICATED ON PLANS. CONTRACTOR SHALL BE RESPONSIBLE FOR VERIFYING SPECIFIED FRAME/GRATE IS COMPATIBLE WITH STRUCTURE; IF NOT, NOTIFY ENGINEER.
- 8. MANHOLES: STANDARD PRECAST REINFORCED CONCRETE MANHOLES CONFORMING TO ASTM C478, SECTION 8.39.0 OF THE STANDARD SPECIFICATIONS AND CONFORMING TO FILE NOS. 12, 13 AND 15 OF THE STANDARD SPECIFICATIONS. DIAMETER AND DEPTH AS INDICATED ON PLANS. MANHOLE SIZES TO BE VERIFIED BY CONTRACTOR AND SHOP DRAWINGS SHALL BE PROVIDED TO THE ENGINEER FOR REVIEW PRIOR TO ORDERING STRUCTURES.
- 9. MANHOLES AND CATCH BASINS DEEPER THAN FOUR FEET SHALL BE PROVIDED WITH MANHOLE STEPS CONFORMING TO SECTION 8.40.0 OF THE STANDARD SPECIFICATIONS.
- 10. SEWERS SHALL BE INSTALLED IN CONFORMANCE WITH SECTION 3.2.0 OF THE STANDARD SPECIFICATIONS. INSTALL PROPER SIZE INCREASERS, REDUCERS AND COUPLINGS WHERE DIFFERENT SIZES OR MATERIALS OF PIPES AND FITTINGS ARE CONNECTED. INSTALL TRACER PIPE OVER NON-METALLIC PIPING IN ACCORDANCE WITH SPS SECTION 382.30(11)(H) AND 382.36(7)(D).
- 11. PROVIDE AND INSTALL CLEANOUTS IN ACCORDANCE WITH SPS CHAPTER 382.35. INSTALL CLEANOUTS AND RISER EXTENSIONS FORM SEWER PIPES TO PROPOSED GRADE. INSTALL PIPING SO CLEANOUTS OPEN IN DIRECTION OF FLOW IN SEWER PIPE. USE LIGHT DUTY, TOP LOADING CLASSIFICATION CLEANOUTS IN EARTH OR UNPAVED FOOT TRAFFIC AREAS; USE MEDIUM DUTY, TOP-LOADING CLASSIFICATION CLEANOUTS IN PAVED FOOT TRAFFIC AREAS; USE HEAVY DUTY, TOP-LOADING CLASSIFICATION CLEANOUTS IN VEHICULAR TRAFFIC AREAS. SET CLEANOUT FRAMES AND COVERS IN PAVEMENT AREAS FLUSH WITH PAVEMENT SURFACE.
- 12. CLASS B COMPACTED TRENCH SECTION (FILE NO. NO. 4 OF STANDARD SPECIFICATIONS) SHALL BE UTILIZED. BEDDING AND COVER MATERIAL SHALL BE IN ACCORDANCE WITH SECTION 8.43.0 OF THE STANDARD SPECIFICATIONS.
- 13. TRENCH BACKFILL MATERIAL SHALL BE GRANULAR BACKFILL IN ACCORDANCE WITH SECTION 8.43.4 OF THE STANDARD SPECIFICATIONS BENEATH AND WITHIN FIVE FEET OF PAVEMENT AREAS; COMPACTED SPOIL BACKFILL IN ACCORDANCE WITH SECTION 8.43.5 OF THE STANDARD SPECIFICATIONS MAY BE USED BENEATH LANDSCAPE AREAS.
- 14. MANHOLE INSTALLATION SHALL BE IN ACCORDANCE WITH SECTION 3.5.0 OF THE STANDARD SPECIFICATIONS. SET MANHOLE RIMS TO ELEVATIONS INDICATED ON PLANS.
- 15. CATCH BASIN INSTALLATION SHALL BE IN ACCORDANCE WITH SECTION 3.6 OF THE STANDARD SPECIFICATIONS. CATCH BASIN EXCAVATION AND PREPARATION SHALL BE IN ACCORDANCE WITH SECTION 3.5.4(A) AND (B) OF THE STANDARD SPECIFICATIONS. FRAMES AND GRATES SHALL BE SET TO THE ELEVATIONS SHOWN ON THE PLANS.
- 16. AFTER INSTALLATION OF SEWER PIPE CLEAN ALL DEBRIS FROM SEWER AND INSPECT INTERIOR OF PIPING TO DETERMINE WHETHER LINE DISPLACEMENT OR OTHER DAMAGE HAS OCCURRED. CONDUCT DEFLECTION TESTING OF INSTALLED PIPE IN ACCORDANCE WITH SECTION 3.2.6(I)(4 OF THE STANDARD SPECIFICATIONS; REPLACE ANY PIPE SECTION NOT PASSING THE DEFLECTION TESTING USING NEW PIPE MATERIALS.

EARTH MOVING:

- 1. ALL EARTH WORK SHALL BE DONE IN ACCORDANCE WITH THE RECOMMENDATIONS OF THE GEOTECHNICAL ENGINEER PRESENTED IN THE SITE GEOTECHNICAL REPORT, GEOTECHNICAL ENGINEER RECOMMENDATIONS MADE IN THE FIELD AND THESE SPECIFICATIONS. IN CASE OF CONFLICT BETWEEN THESE SPECIFICATIONS AND THE RECOMMENDATIONS OF THE GEOTECHNICAL ENGINEER, THE RECOMMENDATIONS OF THE GEOTECHNICAL ENGINEER SHALL GOVERN.
- 2. CONTRACTOR SHALL PROVIDE MATERIAL TEST REPORTS FROM A QUALIFIED TESTING AGENCY INDICATING TEST RESULTS FOR CLASSIFICATION ACCORDING TO ASTM D2487 AND LABORATORY COMPACTION CURVES ACCORDING TO ASTM D 1557 FOR EACH ON-SITE AND OFF-SITE SOIL MATERIAL PROPOSED FOR FILL AND BACKFILL.
- 3. CONTRACTOR SHALL PROVIDE PREEXCAVATION PHOTOS OR VIDEOS SHOWING EXISTING CONDITIONS OF ADJOINING STRUCTURES AND SITE IMPROVEMENTS THAT MIGHT BE MISCONSTRUED AS DAMAGE CAUSED BY EARTHWORK OPERATIONS.
- 4. OLD BUILDING FOUNDATIONS, BUILDING REMNANTS OR UNSUITABLE BACKFILL MATERIAL SHALL BE COMPLETELY REMOVED FROM WITHIN AND A MINIMUM OF 10 FEET BEYOND THE NEW BUILDING PAD AREAS. THE RESULTING EXCAVATION SHALL BE BACKFILLED WITH COMPACTED ENGINEERED FILL.
- 5. FOUNDATIONS, FOUNDATION WALLS OR CONCRETE FLOOR SLABS SHALL BE REMOVED TO A MINIMUM OF TWO FEET BELOW PROPOSED SUBGRADE WITHIN PROPOSED PARKING AND GREENSPACE AREAS. BASEMENT SLABS LOCATED BELOW 2 FEET FROM PLANNED SUBGRADE ELEVATION MAY BE LEFT IN PLACE BUT SHALL BE BROKEN INTO MAXIMUM 6 INCH PIECES TO FACILITATE DRAINAGE.
- 6. SATISFACTORY SOILS FOR FILL: ASTM D 2487 SOIL CLASSIFICATION GROUPS GW, GP, GM, SW, SP, AND SM OR A COMBINATION OF THESE GROUPS; FREE OF ROCK OR GRAVEL LARGER THAN 3 INCHES IN ANY DIMENSION, DEBRIS, WASTE, FROZEN MATERIALS, VEGETATION, AND OTHER DELETERIOUS MATTER OR ANY SOIL GROUP OR COMBINATION OF GROUPS APPROVED OF BY THE PROJECT GEOTECHNICAL ENGINEER.
- 7. UNSATISFACTORY SOILS FOR FILL: SOIL CLASSIFICATION GROUPS GC, SC, CL, ML, OL, CH, MH, OH, AND PT ACCORDING TO ASTM D 2487 OR A COMBINATION OF THESE GROUPS UNLESS DEEMED SATISFACTORY BY THE PROJECT GEOTECHNICAL ENGINEER. UNSATISFACTORY SOILS ALSO INCLUDE SOILS NOT MAINTAINED WITHIN 3 PERCENT OF OPTIMUM SOIL MOISTURE CONTENT AT THE TIME OF COMPACTION.
- 8. AGGREGATE BASE COURSE BENEATH PAVEMENTS: SHALL BE 1-1/4" DENSE GRADED BASE COURSE CONFORMING TO SECTION 305 OF THE STATE OF WISCONSIN STANDARD SPECIFICATIONS FOR HIGHWAY AND STRUCTURE CONSTRUCTION, LATEST EDITION.
- 9. ENGINEERED FILL: NATURALLY OR ARTIFICIALLY GRADED MIXTURE OF NATURAL OR CRUSHED GRAVEL, CRUSHED STONE, AND NATURAL OR CRUSHED SAND; ASTM D 2940; WITH AT LEAST 90 PERCENT PASSING A 1-1/2-INCH (37.5-MM) SIEVE AND NOT MORE THAN 12 PERCENT PASSING A NO. 200 SIEVE OR ANY SOIL DEEMED ACCEPTABLE FOR ENGINEERED FILL BY THE PROJECT GEOTECHNICAL ENGINEER. ENGINEERED FILL SHALL BE FREE OF ORGANIC, FROZEN, OR OTHER DELETERIOUS MATERIAL AND HAVE A MAXIMUM PARTICLE SIZE LESS THAN 3 INCHES. CLAY FILLS SHALL HAVE A LIQUID LIMIT OF LESS THAN 49 AND PLASTICITY INDEX BETWEEN 11 AND 25.
- 10. BEDDING COURSE FOR SEWERS AND WATER SERVICE: NATURALLY OR ARTIFICIALLY GRADED MIXTURE OF NATURAL OR CRUSHED GRAVEL, CRUSHED STONE, AND NATURAL OR CRUSHED SAND CONFORMING TO THE REQUIREMENTS OF SECTION 8.43.2 OF THE STANDARD SPECIFICATIONS FOR SEWER AND WATER CONSTRUCTION IN WISCONSIN, LATEST EDITION.
- 11. DRAINAGE COURSE BENEATH BUILDING SLABS: NARROWLY GRADED MIXTURE OF WASHED, CRUSHED STONE, OR CRUSHED OR UNCRUSHED GRAVEL; ASTM D 448; COARSE-AGGREGATE GRADING SIZE 57; WITH 100 PERCENT PASSING A 1-1/2-INCH (37.5-MM) SIEVE AND 0 TO 5 PERCENT PASSING A NO. 8 SIEVE.
- 12. TRENCH BACKFILL MATERIAL SHALL BE GRANULAR BACKFILL IN ACCORDANCE WITH SECTION 8.43.4 OF THE STANDARD SPECIFICATIONS BENEATH AND WITHIN FIVE FEET OF PAVEMENT AREAS; COMPACTED SPOIL BACKFILL IN ACCORDANCE WITH SECTION 8.43.5 OF THE STANDARD SPECIFICATIONS MAY BE USED BENEATH LANDSCAPE AREAS.
- 13. PIPE COVER MATERIAL: CONFORM TO SECTION 8.43.3 OF THE STANDARD SPECIFICATIONS FOR SEWER AND WATER CONSTRUCTION IN WISCONSIN, LATEST EDITION.
- 14. PREVENT SURFACE WATER AND GROUND WATER FROM ENTERING EXCAVATIONS, FROM PONDING ON PREPARED SUBGRADES, AND FROM FLOODING PROJECT SITE AND SURROUNDING AREA.
- 15. SHORING, SHEETING AND BRACING: SHORE, BRACE OR SLOPE BANKS OF EXCAVATION TO PROTECT WORKMEN, BANKS, ADJACENT PAVING, STRUCTURES, AND UTILITIES TO MEET OSHA REQUIREMENTS. DESIGN OF TEMPORARY SUPPORT OF EXCAVATION IS THE RESPONSIBILITY OF THE CONTRACTOR.
- 16. EXCAVATE TO SUBGRADE ELEVATIONS REGARDLESS OF THE CHARACTER OF SURFACE AND SUBSURFACE CONDITIONS ENCOUNTERED, UNCLASSIFIED EXCAVATED MATERIALS MAY INCLUDE ROCK, SOIL MATERIALS, AND OBSTRUCTIONS. NO CHANGES IN THE CONTRACT SUM OR THE CONTRACT TIME WILL BE AUTHORIZED FOR ROCK EXCAVATION OR REMOVAL OF OBSTRUCTIONS.
- 17. PROOF-ROLL SUBGRADE BELOW THE BUILDING SLABS AND PAVEMENTS WITH FULLY LOADED TANDEM AXLE DUMP TRUCK OR RUBBER TIRED VEHICLE OF SIMILAR SIZE AND WEIGHT, TYPICALLY 9 TONS/AXLE, WHERE COHESIVE SOILS ARE ENCOUNTERED OR WITH A SMOOTH DRUMMED VIBRATORY ROLLER WHERE GRANULAR SOILS ARE PRESENT. DO NOT PROOF-ROLL WET OR SATURATED SUBGRADES AND PROOFROLL IN DRY WEATHER. PROOF ROLL IN PRESENCE OF PROJECT GEOTECHNICAL ENGINEER OR TECHNICIAN. SOILS THAT ARE OBSERVED TO RUT OR DEFLECT EXCESSIVELY UNDER THE MOVING LOAD (TYPICALLY >1") SHALL BE UNDERCUT AND REPLACED WITH PROPERLY COMPACTED ENGINEERED FILL. IN PAVEMENT AREAS WHERE UNDERCUTS ARE PERFORMED, THE EDGES OF THE OVEREXCAVATIONS SHALL BE FEATHERED INOT THE SURROUNDING SUITABLE SOIL SO THAT EDGE FAILURE OF THE OVEREXCAVATED AREA DOES NOT OCCUR.
- 18. DUE TO CLAYEY SOILS, IF UNDERCUTS OCCUR WITHIN PAVEMENT AREAS AND THEY ARE BACKFILLED WITH GRANULAR SOILS, THE BOTTOM OF THE OVEREXCAVATION SHALL BE SLOPED TO A DRAINITLE THAT IS IN KIND SLOPED TOWARD THE NEAREST STORM SEWER. MINIMUM SLOPES OF SUCH DRAINITLES SHALL BE 0.5%.
- 19. CONVENTIONAL DISKING AND AERATION TECHNIQUES SHALL BE USED TO DRY SOILS BEFORE PROOF ROLLING. ALLOT FOR PROPER DRYING TIME IN PROJECT SCHEDULE.
- 20. ENGINEERED FILL SHALL BE PLACED IN MAXIMUM LIFTS OF EIGHT INCHES OF LOOSE MATERIAL AND COMPACTED WITHIN 3% OF OPTIMUM SOIL MOISTURE CONTENT VALUE AND A MINIMUM OF 95% OF THE MAXIMUM DRY DENSITY AS DETERMINED BY THE MODIFIED PROCTOR TEST ASTM D1557. EACH LIFT OF COMPACTED ENGINEERED FILL SHALL BE OBSERVED AND TESTED BY A QUALIFIED GEOTECHNICAL ENGINEER OR TECHNICIAN.
- 21. EXISTING OLD FILL MATERIAL SHALL BE REMOVED BELOW FOOTINGS OR FOUNDATION SUPPORTING FILL. ENGINEERED FILL BELOW FOOTINGS SHOULD HAVE AN IN-PLACE DENSITY OF 95% OF THE MAXIMUM DRY DENSITY AND A MOISTURE CONTENT WITHIN 3% OF OPTIMUM AS DETERMINED BY ASTM D1557. ENGINEERED FILL BELOW FOOTINGS SHALL BE EVALUATED BY IN-FIELD DENSITY TESTS DURING CONSTRUCTION.
- 22. WHERE UNSUITABLE BEARING SOILS ARE ENCOUNTERED IN A FOOTING EXCAVATION, THE EXCAVATION SHALL BE DEEPEEN TO COMPETENT BEARING SOIL AND THE FOOTING LOWERED OR AN OVEREXCAVATION AND BACKFILL PROCEDURE PERFORMED. OVEREXCAVATION AND BACKFILL TREATMENT REQUIRES WIDENING THE DEEPEEN EXCAVATION IN ALL DIRECTIONS AT LEAST 6 INCHES BEYOND THE EDGE OF THE FOOTING FOR EACH 12 INCHES OF OVEREXCAVATION DEPTH. THE OVEREXCAVATION SHALL BE BACKFILLED UP TO FOOTING BASE ELEVATION IN MAXIMUM 8 INCH LOOSE LIFTS WITH SUITABLE GRANULAR FILL MATERIAL AND COMPACTED TO 95% OF THE MAXIMUM DRY DENSITY AND A MOISTURE CONTENT WITHIN 3% OF OPTIMUM AS DETERMINED BY ASTM D1557. SOILS AT FOUNDATION BEARING ELEVATION IN THE FOOTING EXCAVATIONS SHALL BE OBSERVED AND TESTED BY A QUALIFIED GEOTECHNICAL ENGINEER OR TECHNICIAN.
- 23. A MINIMUM OF FOUR INCHES OF DRAINAGE COURSE MAT SHALL BE PLACED BELOW BUILDING FLOOR SLABS. DRAINAGE COURSE SHALL BE COMPACTED TO A MINIMUM OF 95% COMPACTION WITH RESPECT TO THE MODIFIED PROCTOR (ASTM D1557)
- 24. UTILITY TRENCHES FOR SEWER AND WATER SHALL CONFORM TO CLASS B COMPACTED TRENCH SECTION IN ACCORDANCE WITH FILE NO. 4 OF THE STANDARD SPECIFICATIONS FOR SEWER AND WATER CONSTRUCTION IN WISCONSIN, LATEST EDITION.
- 25. BACKFILL UTILITY TRENCHES IN 4 TO 6 INCH LOOSE LIFTS COMPACTED TO 95% OF THE MAXIMUM DRY DENSITY AS DETERMINED BY ASTM D1557. BACKFILL SHALL BE MOISTURE CONDITIONED TO BE WITH 3% OF OPTIMUM MOISTURE CONTENT AS DETERMINED BY ASTM D1557.
- 26. UTILITY BEDDING PLACEMENT: CONFORM TO SECTION 3.2.6 OF THE STANDARD SPECIFICATIONS FOR SEWER AND WATER CONSTRUCTION IN WISCONSIN, LATEST EDITION. BEDDING MATERIAL SHALL BE COMPACTED TO A MINIMUM OF 90% COMPACTION WITH RESPECT TO THE MODIFIED PROCTOR (ASTM D1557).
- 27. COMPACTION TESTING OF UTILITY TRENCHES SHALL BE PERFORMED ONE FOR EVERY 200 CUBIC YARDS OF BACKFILL PLACED OR ONE FOR TEST PER 200 LINEAR FEET OF TRENCH FOR EACH LIFT, WHICHEVER IS LESS.
- 28. AGGREGATE BASE COURSE BENEATH PAVEMENTS SHALL BE PLACED AND COMPACTED TO 95% OF THE MAXIMUM DRY DENSITY WITH A MOISTURE CONTENT WITHIN 3% OF OPTIMUM AS DETERMINED BY ASTM D1557. AGGREGATE BASE SHALL BE OBSERVED AND TESTED BY A QUALIFIED GEOTECHNICAL ENGINEER OR TECHNICIAN.
- 29. GRADING GENERAL: UNIFORMLY GRADE AREAS TO A SMOOTH SURFACE, FREE OF IRREGULAR SURFACE CHANGES. COMPLY WITH COMPACTION REQUIREMENTS AND GRADE TO CROSS SECTIONS, LINES, AND ELEVATIONS INDICATED. SLOPE GRADES TO DIRECT WATER AWAY FROM BUILDINGS AND TO PREVENT PONDING.
- 30. TESTING AGENCY: CONTRACTOR SHALL ENGAGE A QUALIFIED INDEPENDENT GEOTECHNICAL ENGINEERING TESTING AGENCY TO PERFORM FIELD QUALITY-CONTROL TESTING.
- 31. FOOTING SUBGRADE TESTING: EACH ISOLATED FOOTING SHALL INCLUDE AT LEAST ONE TEST PROBE. TEST PROBES SHALL BE PERFORMED EVERY 20 LINEAR FEET IN CONTINUOUS FOOTINGS.
- 32. BUILDING SLAB AREA TESTING: AT SUBGRADE AND AT EACH COMPACTED FILL AND BACKFILL LAYER, AT LEAST 1 TEST PER LIFT FOR EVERY 2500 SQ. FT. OR LESS OF BUILDING SLAB, BUT IN NO CASE FEWER THAN 3 TESTS.
- 33. PAVEMENT AREA TESTING: AT SUBGRADE AND AT EACH COMPACTED FILL AND BACKFILL LAYER, AT LEAST ONE TEST FOR EVERY LIFT FOR EVERY 2,500 SQUARE FEET OF PAVEMENT AREA, BUT IN NO CASES FEWER THAN 3 TESTS.
- 34. FOUNDATION WALL BACKFILL: AT EACH COMPACTED BACKFILL LAYER, AT LEAST 1 TEST PER LIFT FOR EACH 50 FEET OR LESS OF WALL LENGTH, BUT NO FEWER THAN 2 TESTS.
- 35. WHEN TESTING AGENCY REPORTS THAT SUBGRADES, FILLS, OR BACKFILLS HAVE NOT ACHIEVED DEGREE OF COMPACTION SPECIFIED, SCARIFY AND MOISTEN OR AERATE, OR REMOVE AND REPLACE SOIL TO DEPTH REQUIRED; RECOMPACT AND RETEST UNTIL SPECIFIED COMPACTION IS OBTAINED.
- 36. DISPOSAL: REMOVE SURPLUS SOIL AND WASTE MATERIAL, INCLUDING UNSATISFACTORY SOIL, TRASH, AND DEBRIS, AND LEGALLY DISPOSE OF IT OFF OWNER'S PROPERTY.



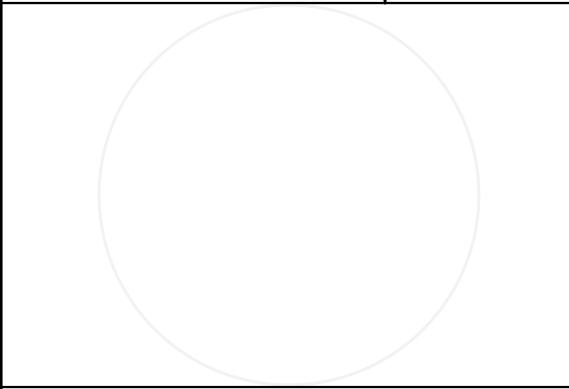
PRELIMINARY NOT FOR CONSTRUCTION

IRGENS RESEARCH DRIVE PHASE II

10701 RESEARCH DRIVE

WAUWATOSEA, WI 53226

SPECIFICATIONS



ISSUANCE	DATE
SD SET	04/20/2022
UPDATED CIVIL PRICING SET	06/24/2022
---	---

NO. REVISION	DATE
---	---
---	---
---	---
---	---
---	---
---	---

SCALE:	NTS
PROJECT NO.:	20166
DESIGN DATE:	---
PLOT DATE:	2023.01.24
DRAWN BY:	---
CHECKED BY:	CTC
APPROVED BY:	---
SHEET NO:	

C500

CONCRETE PAVING:

3. THE COMPOSITION, PLACING AND CONSTRUCTION OF CONCRETE PAVEMENTS SHALL BE IN ACCORDANCE WITH THE APPLICABLE REQUIREMENTS OF SECTIONS 415.416, 501.601, AND 602 OF THE STATE OF WISCONSIN STANDARD SPECIFICATIONS FOR HIGHWAY AND STRUCTURE CONSTRUCTION, LATEST EDITION (WISDOT STANDARD SPECIFICATIONS) AND LOCAL MUNICIPAL REQUIREMENTS AND SPECIFICATIONS.
2. CONTRACTOR SHALL PROVIDE PRODUCT DATA FOR EACH TYPE OF PRODUCT INDICATED - INCLUDE TECHNICAL DATA AND TESTED PHYSICAL AND PERFORMANCE PROPERTIES; JOB-MIX DESIGNS: CERTIFICATION THAT MIX MEETS OR EXCEEDS WISDOT STANDARD SPECIFICATIONS; AND MATERIAL CERTIFICATES CERTIFYING COMPLIANCE WITH WISDOT STANDARD SPECIFICATIONS.
3. MANUFACTURER QUALIFICATIONS: MANUFACTURER OF READY-MIXED CONCRETE PRODUCTS WHO COMPLIES WITH ASTM C 94/C 94M REQUIREMENTS FOR PRODUCTION FACILITIES AND EQUIPMENT AND APPROVED BY THE WISCONSIN DEPARTMENT OF TRANSPORTATION.
4. CONCRETE GRADE: GRADE A, GRADE A-2, OR A-FA CONFORMING TO SECTION 501.3.1.3 OF THE WISDOT STANDARD SPECIFICATIONS
5. AGGREGATES: CONFORM TO SECTION 501 OF THE WISDOT STANDARD SPECIFICATIONS. PROVIDE AGGREGATES FROM A SINGLE SOURCE.
6. WATER: ASTM C 94/C 94M AND SECTION 501 OF THE WISDOT STANDARD SPECIFICATIONS.
7. AIR-ENTRAINING ADMIXTURE: ASTM C 260 AND SECTION 501 OF THE WISDOT STANDARD SPECIFICATIONS.
8. CHEMICAL ADMIXTURES: PER SECTION 501 OF THE WISDOT STANDARD SPECIFICATIONS.
9. CURING MATERIALS IN ACCORDANCE WITH SECTION 415.3.12 OF THE WISDOT STANDARD SPECIFICATIONS.
10. EXPANSION JOINT MATERIAL: CONFORM TO SECTION 415.2.3 OF THE WISDOT STANDARD SPECIFICATIONS.
11. MEASURE, BATCH, AND MIX CONCRETE MATERIALS AND CONCRETE IN ACCORDANCE WITH SECTION 501 OF THE WISDOT STANDARD SPECIFICATIONS.
12. GENERAL EXECUTION: CONFORM TO SECTION 415 OF THE WISDOT STANDARD SPECIFICATIONS.
13. PROOFROLL SUBGRADE AND AGGREGATE BASE AS OUTLINED IN EARTH MOVING SPECIFICATION PRIOR TO PLACEMENT OF PAVEMENTS.
14. SET, BRACE, AND SECURE EDGE FORMS, BULKHEADS, AND INTERMEDIATE SCREED GUIDES FOR PAVEMENT TO REQUIRED LINES, GRADES, AND ELEVATIONS. INSTALL FORMS TO ALLOW CONTINUOUS PROGRESS OF WORK AND SO FORMS CAN REMAIN IN PLACE AT LEAST 24 HOURS AFTER CONCRETE PLACEMENT
15. CLEAN FORMS AFTER EACH USE AND COAT WITH FORM-RELEASE AGENT TO ENSURE SEPARATION FROM CONCRETE WITHOUT DAMAGE.
16. JOINTS GENERAL: FORM CONSTRUCTION, ISOLATION, AND CONTRACTION JOINTS AND TOOL EDGINGS TRUE TO LINE WITH FACES PERPENDICULAR TO SURFACE PLANE OF CONCRETE. CONSTRUCT TRANSVERSE JOINTS AT RIGHT ANGLES TO CENTERLINE, UNLESS OTHERWISE INDICATED. CONFORM TO SECTION 415 OF THE WISDOT STANDARD SPECIFICATIONS
17. CONSTRUCTION JOINTS: SET CONSTRUCTION JOINTS AT SIDE AND END TERMINATIONS OF PAVEMENT AND AT LOCATIONS WHERE PAVEMENT OPERATIONS ARE STOPPED FOR MORE THAN ONE-HALF HOUR UNLESS PAVEMENT TERMINATES AT ISOLATION JOINTS.
18. ISOLATION JOINTS: FORM ISOLATION JOINTS OF PREFORMED JOINT-FILLER STRIPS ABUTTING CONCRETE CURBS, CATCH BASINS, MANHOLES, INLETS, STRUCTURES, WALKS, OTHER FIXED OBJECTS, AND WHERE INDICATED.
19. CONTRACTION JOINTS: FORM WEAKENED-PLANE CONTRACTION JOINTS. SECTIONING CONCRETE INTO AREAS AS INDICATED. CONSTRUCT CONTRACTION JOINTS FOR A DEPTH EQUAL TO AT LEAST ONE-FOURTH OF THE CONCRETE THICKNESS TO MATCH JOINTING OF EXISTING ADJACENT CONCRETE PAVEMENT.
20. EDGING: TOOL EDGES OF PAVEMENT, GUTTERS, CURBS, AND JOINTS IN CONCRETE AFTER INITIAL FLOATING WITH AN EDGING TOOL TO A 1/4-INCH RADIUS. REPEAT TOOLING OF EDGES AFTER APPLYING SURFACE FINISHES. ELIMINATE TOOL MARKS ON CONCRETE SURFACES.
21. CURBING: COMPLY WITH SECTION 601 OF THE WISDOT STANDARD SPECIFICATIONS.
22. SIDEWALKS: COMPLY WITH SECTION 602 OF THE WISDOT STANDARD SPECIFICATIONS.
23. MOISTEN AGGREGATE TO PROVIDE A UNIFORM DAMPENED CONDITION AT TIME CONCRETE IS PLACED.
24. FINISH CURBING IN ACCORDANCE WITH SECTION 601.3.5 OF THE WISDOT STANDARD SPECIFICATIONS.
25. FINISH SIDEWALK AND PATIO IN ACCORDANCE WITH SECTION 602.3.2.3 OF THE WISDOT STANDARD SPECIFICATIONS (LIGHT BROOM FINISH).
26. FINISH CONCRETE VEHICULAR PAVEMENTS AND PADS IN ACCORDANCE WITH SECTION 415.3.8 OF THE WISDOT STANDARD SPECIFICATIONS (ARTIFICIAL TURF DRAG FINISH).
27. PROTECT AND CURE SIDEWALK IN ACCORDANCE WITH SECTION 602.3.2.6 OF THE WISDOT STANDARD SPECIFICATIONS.
28. PROTECT AND CURE CURBING IN ACCORDANCE WITH SECTION 601.3.7 OF THE WISDOT STANDARD SPECIFICATIONS.
29. PROTECT AND CURE VEHICULAR CONCRETE PAVING IN ACCORDANCE WITH SECTION 415.3.12 OF THE WISDOT STANDARD SPECIFICATIONS.
30. REMOVE AND REPLACE CONCRETE PAVEMENT THAT IS BROKEN, DAMAGED, OR DEFECTIVE OR THAT DOES NOT COMPLY WITH REQUIREMENTS IN THIS SECTION.
31. PROTECT CONCRETE FROM DAMAGE. EXCLUDE TRAFFIC FROM PAVEMENT FOR AT LEAST 7 DAYS AFTER PLACEMENT.
32. MAINTAIN CONCRETE PAVEMENT FREE OF STAINS, DISCOLORATION, DIRT, AND OTHER FOREIGN MATERIAL. SWEEP CONCRETE PAVEMENT NOT MORE THAN TWO DAYS BEFORE DATE SCHEDULED FOR SUBSTANTIAL COMPLETION INSPECTIONS.

ASPHALTIC PAVING:

1. THE COMPOSITION, PLACING AND CONSTRUCTION OF ASPHALTIC PAVEMENTS SHALL BE IN ACCORDANCE WITH THE REQUIREMENTS OF SECTIONS 450, 455, 460, 465, AND 475 OF THE STATE OF WISCONSIN STANDARD SPECIFICATIONS FOR HIGHWAY AND STRUCTURE CONSTRUCTION, LATEST EDITION (WISDOT STANDARD SPECIFICATIONS).
2. CONTRACTOR SHALL PROVIDE PRODUCT DATA FOR EACH TYPE OF PRODUCT INDICATED - INCLUDE TECHNICAL DATA AND TESTED PHYSICAL AND PERFORMANCE PROPERTIES; JOB-MIX DESIGNS: CERTIFICATION THAT MIX MEETS OR EXCEEDS WISDOT STANDARD SPECIFICATIONS; AND MATERIAL CERTIFICATES CERTIFYING COMPLIANCE WITH WISDOT STANDARD SPECIFICATIONS.
3. MANUFACTURER QUALIFICATIONS: MANUFACTURER SHALL BE REGISTERED WITH AND APPROVED BY THE DOT OF THE STATE IN WHICH PROJECT IS LOCATED.
4. ENVIRONMENTAL LIMITATIONS: DO NOT APPLY ASPHALT MATERIALS IF BASE COURSE IS WET OR EXCESSIVELY DAMP OR IF THE FOLLOWING CONDITIONS ARE NOT MET: APPLY TACK COAT WHEN AMBIENT TEMPERATURE IS ABOVE 50 DEGREES FAHRENHEIT AND WHEN TEMPERATURE HAS NOT BEEN BELOW 35 DEGREES FAHRENHEIT FOR 12 HOURS IMMEDIATELY PRIOR TO APPLICATION; PLACE ASPHALTIC CONCRETE SURFACE COURSE WHEN TEMPERATURE IS ABOVE 40 DEGREES FAHRENHEIT; BASE COURSE MAY BE PLACED WHEN AIR TEMPERATURE IS ABOVE 30 DEGREES FAHRENHEIT AND RISING. PROCEED WITH PAVEMENT MARKING ONLY ON CLEAN, DRY SURFACES. DO NOT APPLY BELOW THE MINIMUM PAVEMENT TEMPERATURE AS RECOMMENDED BY THE MANUFACTURER.
5. AGGREGATES SHALL BE IN ACCORDANCE WITH SECTION 460.2.2 OF THE WISDOT STANDARD SPECIFICATIONS.
6. ASPHALT MATERIALS SHALL BE IN ACCORDANCE WITH CHAPTER 455 OF THE WISDOT STANDARD SPECIFICATIONS.
7. PAVEMENT MARKING PAINT: PROVIDE PAINT FROM THE WISCONSIN DEPARTMENT OF TRANSPORTATION'S APPROVED PRODUCTS LIST. COLOR SHALL BE WHITE UNLESS INDICATED OTHERWISE ON PLANS.
8. HOT-MIX ASPHALT: ASPHALTIC BINDER COURSE AND SURFACE COURSE SHALL BE MIXTURE LT FOR REGULAR DUTY PAVEMENT AND LT FOR HEAVY DUTY PAVEMENT COMPLYING WITH THE WISDOT STANDARD SPECIFICATIONS. ASPHALTIC BINDER SHALL BE 58-28 S UNLESS NOTED.
9. AGGREGATE BASE COURSE BENEATH PAVEMENTS: SHALL BE 1-1/4" DENSE GRADED BASE COURSE CONFORMING TO SECTION 305 OF THE WISDOT STANDARD SPECIFICATIONS.
10. PAVEMENT PLACEMENT GENERAL: ASPHALT CONCRETE PAVING EQUIPMENT, WEATHER LIMITATIONS, JOB-MIX FORMULA, MIXING, CONSTRUCTION METHODS, COMPACTION, FINISHING, TOLERANCE AND PROTECTION SHALL CONFORM TO THE REQUIREMENTS OF THE APPROPRIATE SECTIONS OF THE WISDOT STANDARD SPECIFICATIONS.
11. PREPARE AND PROOFROLL SUBGRADES AND AGGREGATE BASE COURSE AS OUTLINED IN EARTH MOVING SPECIFICATIONS PRIOR TO PLACEMENT OF ASPHALT PAVEMENTS.
12. SWEEP LOOSE GRANULAR PARTICLES FROM SURFACE OF AGGREGATE BASE COURSE PRIOR TO PAVEMENT PLACEMENT. DO NOT DISLodge OR DISTURB AGGREGATE EMBEDDED IN COMPACTED SURFACE OF BASE COURSE.
13. SPREAD AND FINISH ASPHALTIC MIXTURE IN ACCORDANCE WITH SECTION 450.3.2.5 OF THE WISDOT STANDARD SPECIFICATIONS. PAVEMENT THICKNESSES SHALL BE AS INDICATED ON THE PLANS.
14. PROMPTLY CORRECT SURFACE IRREGULARITIES IN PAVING COURSE BEHIND PAVER. USE SUITABLE HAND TOOLS TO REMOVE EXCESS MATERIAL FORMING HIGH SPOTS. FILL DEPRESSIONS WITH HOT-MIX ASPHALT TO PREVENT SEGREGATION OF MIX; USE SUITABLE HAND TOOLS TO SMOOTH SURFACE.
15. COMPACT ASPHALTIC PAVEMENT IN ACCORDANCE WITH SECTION 450.3.2.6 OF THE WISDOT STANDARD SPECIFICATIONS.
16. PROTECTION: AFTER FINAL ROLLING, DO NOT PERMIT VEHICULAR TRAFFIC ON PAVEMENT UNTIL IT HAS COOLED AND HARDENED. ERECT BARRICADES TO PROTECT PAVING FROM TRAFFIC UNTIL MIXTURE HAS COOLED ENOUGH NOT TO BECOME MARKED.
17. THICKNESS TOLERANCE: COMPACT EACH COURSE TO PRODUCE THE THICKNESS INDICATED WITHIN PLUS/MINUS 1/4 INCH FOR BINDER COURSE AND PLUS 1/4 INCH FOR SURFACE COURSE, NO MINUS.
18. SURFACE SMOOTHNESS TOLERANCE: COMPACT EACH COURSE TO PRODUCE A SURFACE SMOOTHNESS WITHIN THE FOLLOWING TOLERANCES AS DETERMINED BY USING A 10-FOOT STRAIGHTEDGE APPLIED TRANSVERSELY OR LONGITUDINALLY TO PAVED AREAS: BINDER COURSE: 1/4 INCH; SURFACE COURSE: 1/8 INCH. REMOVE AND REPLACE ALL HUMPS OR DEPRESSIONS EXCEEDING THE SPECIFIED TOLERANCES.
19. DO NOT APPLY PAVEMENT-MARKING PAINT UNTIL LAYOUT, COLORS, AND PLACEMENT HAVE BEEN VERIFIED WITH ENGINEER.
20. APPLY MARKINGS TO A DRY SURFACE FREE FROM FROST. REMOVE DUST, DIRT, OIL, GREASE, GRAVEL, DEBRIS OR OTHER MATERIAL THAT MAY PREVENT BONDING TO THE PAVEMENT.
21. APPLY PAINT AS THE MANUFACTURER SPECIFIES WITH MECHANICAL EQUIPMENT TO PRODUCE PAVEMENT MARKINGS, OF DIMENSIONS INDICATED, WITH UNIFORM, STRAIGHT EDGES. APPLY AT MANUFACTURER'S RECOMMENDED RATES AT A MINIMUM RATE OF 17.6 GALLONS/MILE FOR A CONTINUOUS 4" LINE.
22. TESTING AGENCY: CONTRACTOR SHALL ENGAGE A QUALIFIED INDEPENDENT TESTING AND INSPECTING AGENCY TO PERFORM FIELD TESTS AND INSPECTIONS AND TO PREPARE TEST REPORTS.



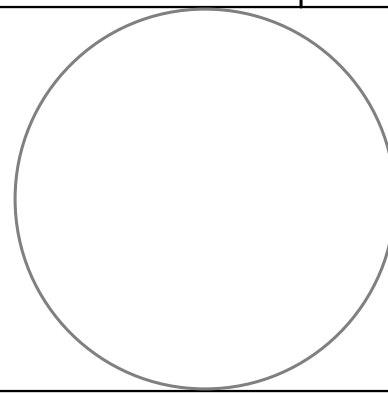
PRELIMINARY NOT FOR CONSTRUCTION

IRGENS RESEARCH DRIVE PHASE II

10701 RESEARCH DRIVE

WAUWATOSEA, WI 53226

SPECIFICATIONS



ISSUANCE	DATE
SD SET	04/20/2022
UPDATED CIVIL PRICING SET	06/24/2022

NO. REVISION	DATE
--------------	------

SCALE:	NTS
PROJECT NO:	20166
DESIGN DATE:	----
PLOT DATE:	2023.01.24
DRAWN BY:	----
CHECKED BY:	CTC
APPROVED BY:	----
SHEET NO:	

C501