



South Elevation

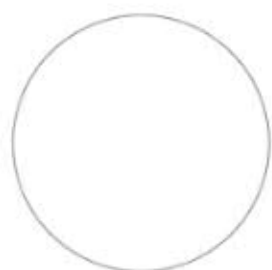


East Elevation



North Elevation

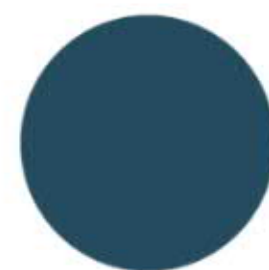
Acrylicap® ABS Panels are most often ordered in one of the colors below. Want something unique?
Provide a sample, RAL or PMS number and we will color match to your specifications.



ALABASTER



ELECTRIC BLACK



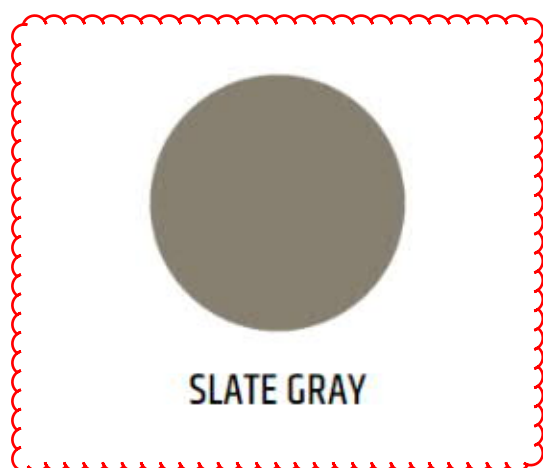
SLATE BLUE



FOREST GREEN



SHADOW GRAY



SLATE GRAY



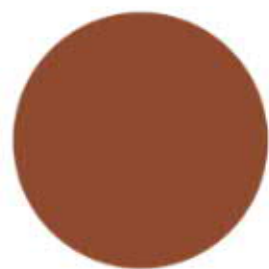
DARK BRONZE



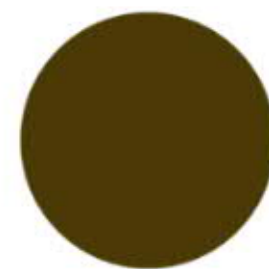
OYSTER



PUTTY



TERRACOTTA



MANSARD BROWN

Swatches viewed on a computer screen or on printed material are intended to be a guide to our product color choices. For best results, contact us to request material samples that will provide true color representation.

envisor[®]

SCREENING SYSTEMS

cityScapes[®]
ARCHITECTURAL INNOVATIONS



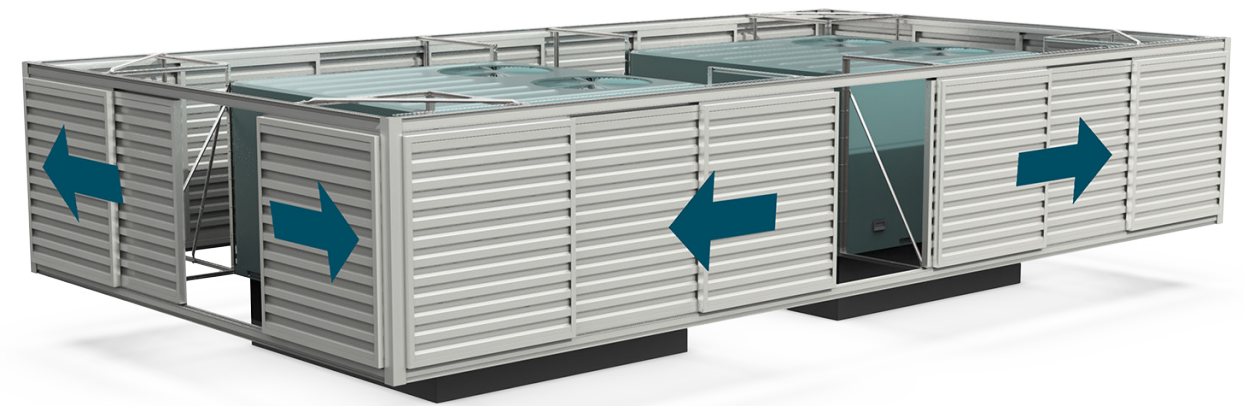
Office Building
Indianapolis, IN

ENVISOR[®]

ROOF SCREENS WITH SOARING GOOD LOOKS

Set the bar high with durable and attractive Envisor[®] roof screens. Affordable and elegant, Envisor makes meeting code simple and blends into any design. Better yet, no rooftop penetration is required for installation, which gives you a clean, modern look.

- Practical solution for municipal screening requirements of HVAC units, chillers, air handlers, and more.
- Create your own custom design for your specific application.
- Nationwide project management and installation available.
- Designed in-house and manufactured in a state-of-the-art facility.



ZERO ROOFTOP PENETRATION

UV and rust resistant finishes to protect from harsh environments

CODE COMPLIANT

Practical solution for municipal screening requirements of HVAC units, chillers, air handlers, and more

WIND LOAD AND RESISTANCE

Ultimate wind speed resistance

EASY MAINTENANCE

Panels slide for easy service access

PANEL STYLES BLEND BUILDING DESIGN & UTILITY

Envisor® offers over 15 panel designs and variety of colors to choose from, ensuring that your HVAC screening perfectly matches your building design.



MS Consultants
Columbus, OH



Hospital
Richmond, VA

ACRYLICAP[®] ABS INFILLS

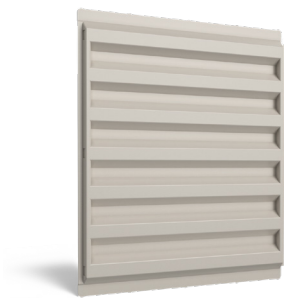
- Acrylicap[®] uses .187 acrylic-capped ABS for UV protection.
- Standard panel heights are 35", 52", 70".
- Panels can be stacked for additional coverage.
- PE Stamped drawings are available on all North America projects.



Louver



Horizontal Rib



7.2 Rib



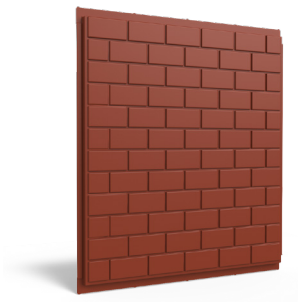
Flat Pan




Batten



Vertical Rib



Brick



We are working with Cityscapes to provide a panel with this tree pattern in the Slate Grey color.

Actual color swatch will be provided at the Design Review Board meeting

Custom