

PRELIMINARY: NOT FOR
CONSTRUCTION

ICON

Shelter Systems Inc

DISTINCTIVE STEEL SHELTERS

WWW.ICONSHelters.COM

COPYRIGHT 2004, ICON SHELTER
SYSTEMS, INC.

1455 LINCOLN AVE.
HOLLAND MI, 49423

616.396.0919
800.748.0985
616.396.0944 FX

Elevation

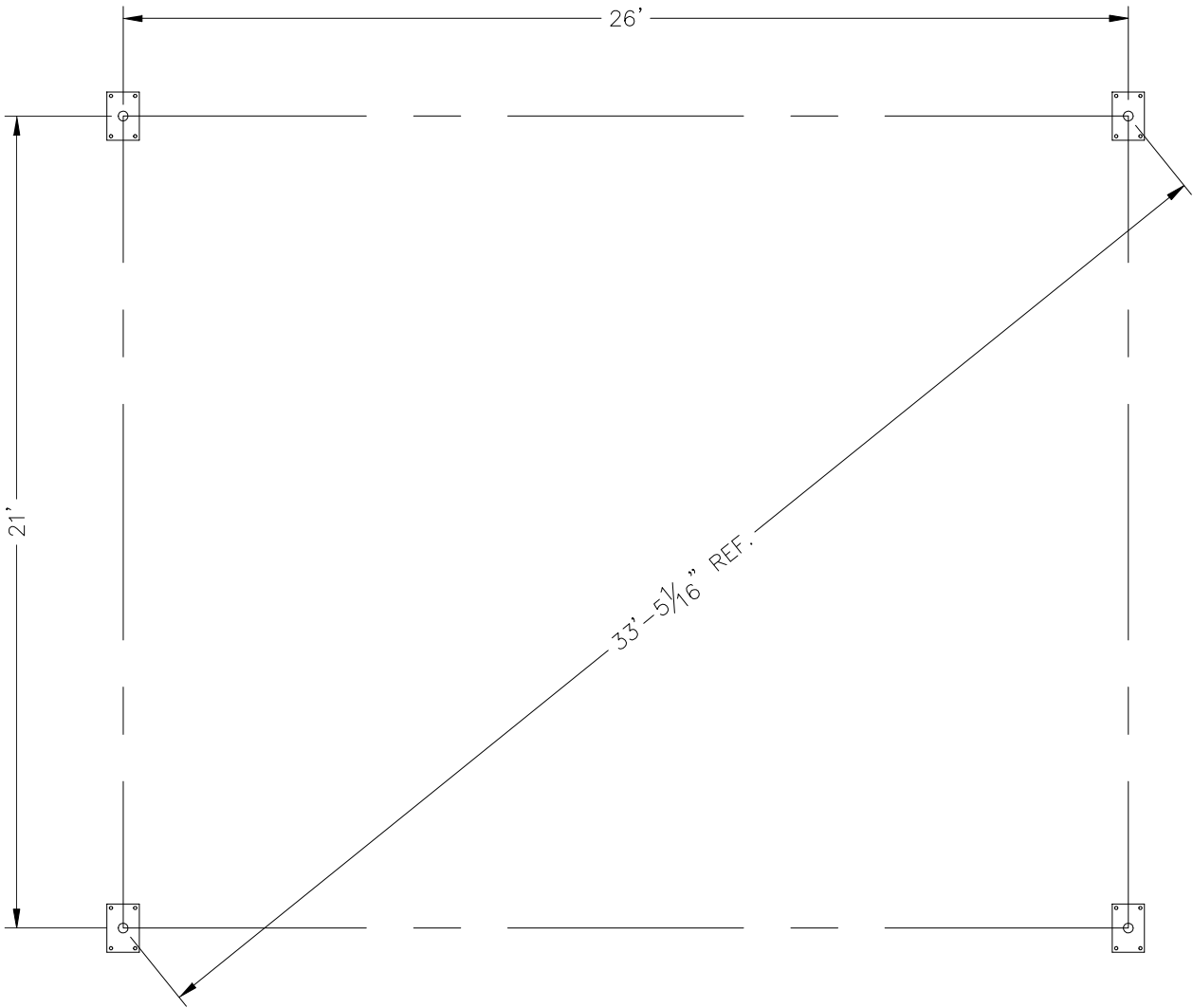
DRAWN BY:
MH
DATE:
10/30/2023
PRELIMINARY ID:
81298
REVISION:
A
BUILDING TYPE:
MP25X30S-P3
PROJECT NAME:

SHEET

1.0

Engineering\Standards\MP\25X30\S-P3-35-90-11\Drawings\Preliminary\MP25x30S-P3-35-90-11~81298.dwg
QF-73-01-42

DWG:ineering\Standards\MP\25X30\S-P3-35-90-11\Drawings\Preliminary\MP25x30S-P3-35-90-11~81298.dwg



PRELIMINARY: NOT FOR CONSTRUCTION

ICON
Shelter Systems Inc
DISTINCTIVE STEEL SHELTERS
WWW.ICONSHELTERS.COM
COPYRIGHT 2004, ICON SHELTER SYSTEMS, INC.
1455 LINCOLN AVE.
HOLLAND MI, 49423
616.396.0919
800.748.0985
616.396.0944 FX

Anchor Bolt Layout

3/4" ANCHOR BOLT
W/ (2) 3/4" NUTS
(4) PLCS

LEVELING NUTS

6" EMBEDMENT

4"

10"

CONCRETE FOOTING
NOT TO SCALE

ACTUAL FOOTING DESIGN
SHOWN ON INSTALLATION
DRAWINGS

PRELIMINARY DRAWINGS SHOWN AS 6" BURIED
STANDARD BASE CONNECTION
COLUMN TYPE: A (6" BURIED)

BASE COVERS
OPTIONAL

3/4" ANCHOR BOLT
W/ 3/4" NUTS (4) PLCS

2 1/2"

11 1/2"

CONCRETE FOOTING
NOT TO SCALE

ACTUAL FOOTING DESIGN
SHOWN ON INSTALLATION
DRAWINGS

OPTIONAL BASE CONNECTION
COLUMN TYPE: B (SURFACE MOUNT W/ COVERS)

DRAWN BY:
MH

DATE:
10/30/2023

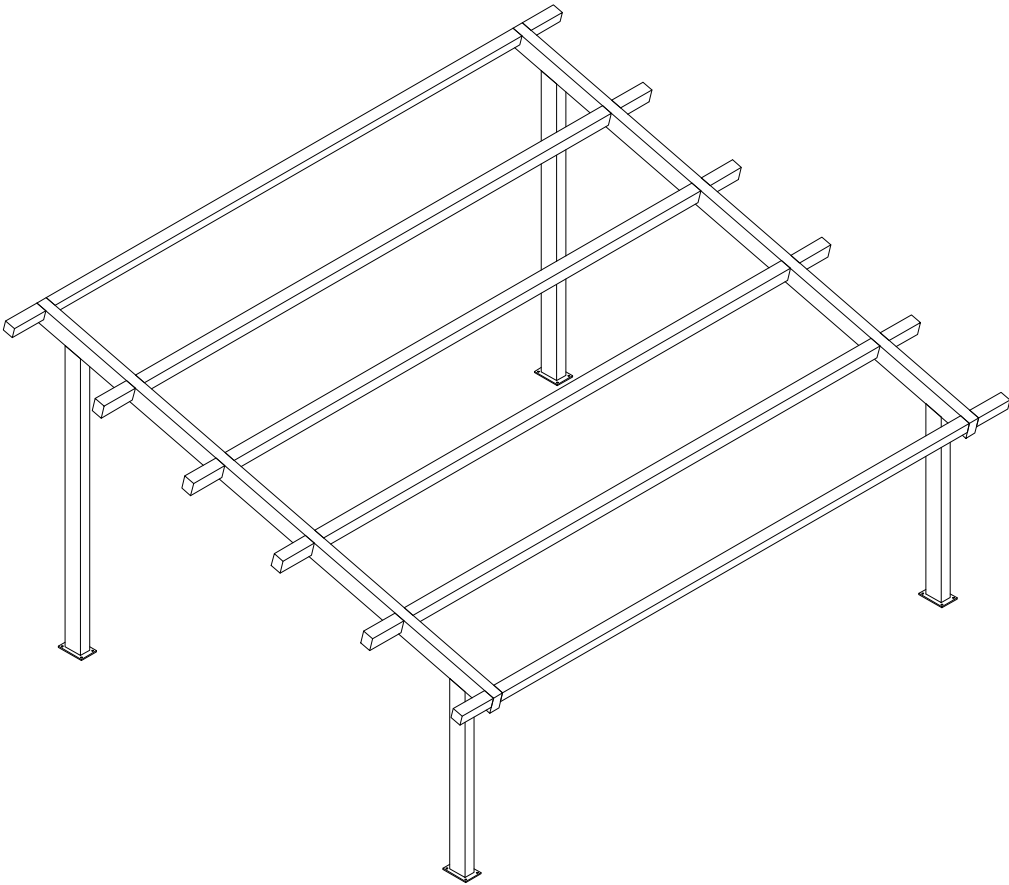
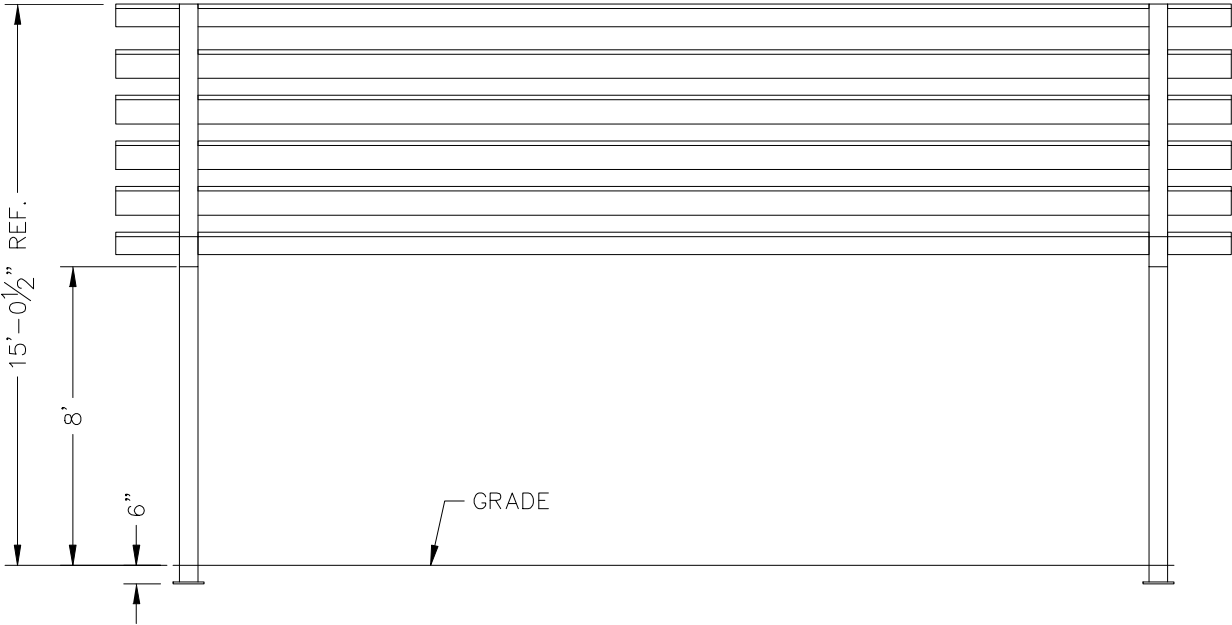
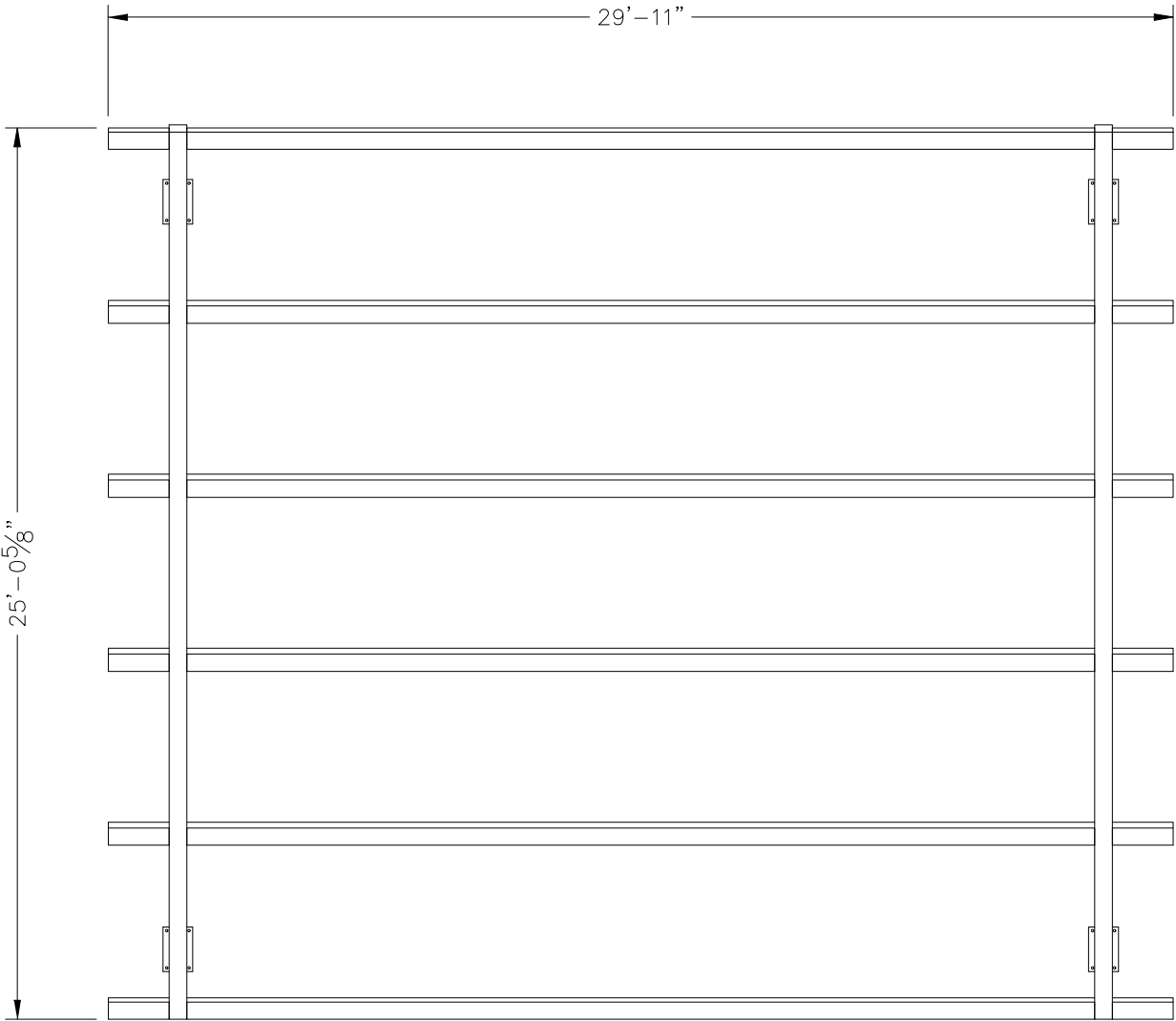
PRELIMINARY ID:
81298

REVISION:
A

BUILDING TYPE:
MP25X30S-P3

PROJECT NAME:

DWG:ineering\Standards\MP\25X30\S-P3-35-90-11\Drawings\Preliminary\MP25x30S-P3-35-90-11~81298.dwg



ALL STRUCTURAL COMPONENTS WILL BE:
TUBE: ASTM A500 GRADE B
PLATE: ASTM A36
BOLTS: ASTM A325
NUTS: ASTM A563
WELDING: GMAW

NOTE:
COLUMN SIZE: HSS 10x6x3/16

PRELIMINARY: NOT FOR CONSTRUCTION

ICON

Shelter Systems Inc

DISTINCTIVE STEEL SHELTERS

WWW.ICONSHelters.COM

COPYRIGHT 2004, ICON SHELTER SYSTEMS, INC.

1455 LINCOLN AVE.
HOLLAND MI, 49423

616.396.0919
800.748.0985
616.396.0944 FX

Frame

DRAWN BY:
MH
DATE:
10/30/2023
PRELIMINARY ID:
81298
REVISION:
A
BUILDING TYPE:
MP25X30S-P3
PROJECT NAME:

SHEET

3.0

Engineering\Standards\MP\25X30\S-P3-35-90-11\Drawings\Preliminary\MP25x30S-P3-35-90-11~81298.dwg
OF-73-01-42

DWG:ineering\Standards\MP\25X30\S-P3-35-90-11\Drawings\Preliminary\MP25x30S-P3-35-90-11~81298.dwg

PRELIMINARY: NOT FOR CONSTRUCTION

ICON

Shelter Systems Inc

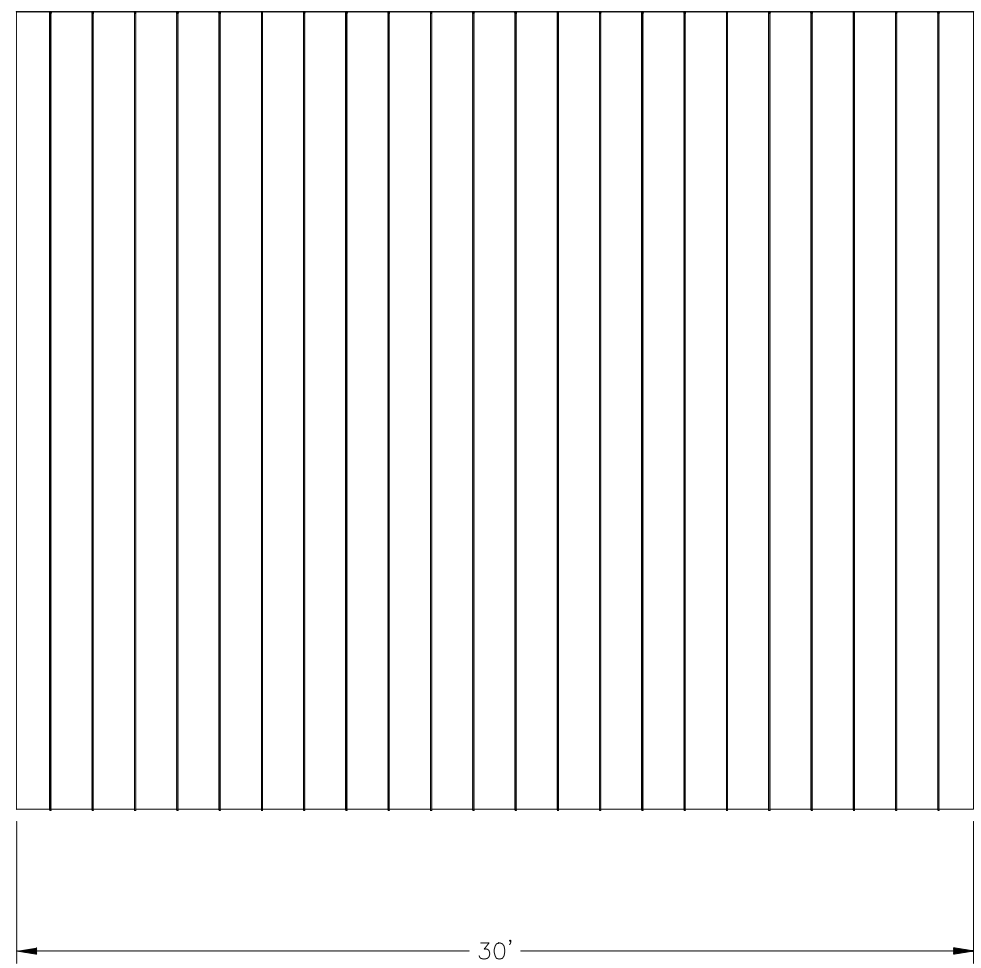
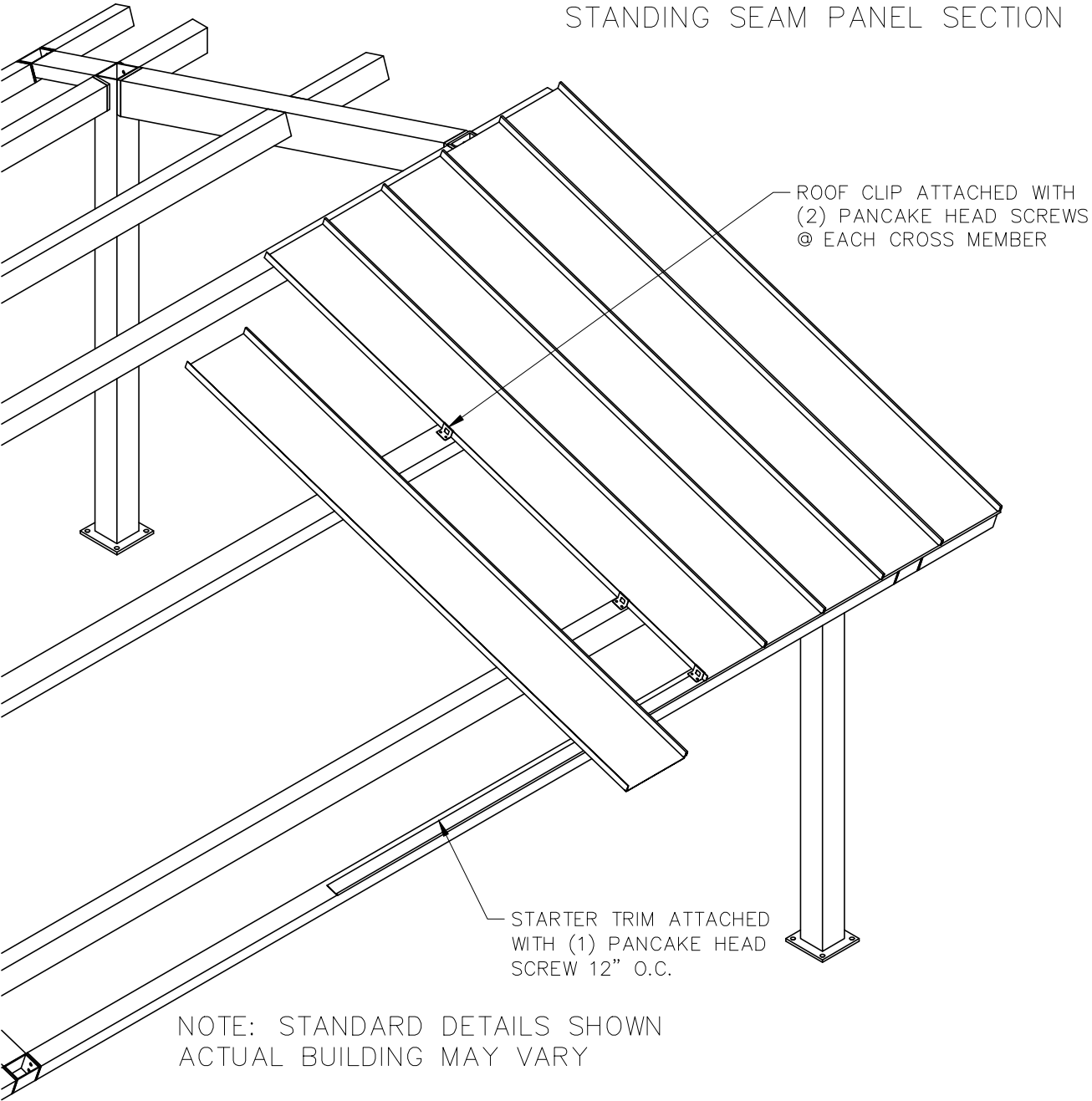
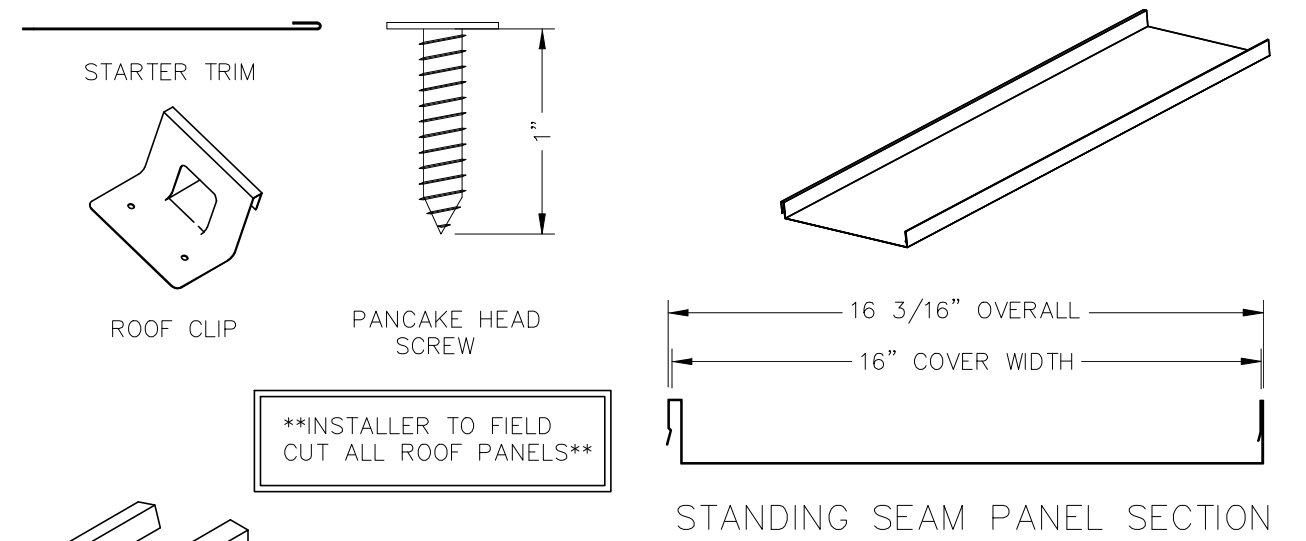
DISTINCTIVE STEEL SHELTERS
WWW.ICONSHELTERS.COM
COPYRIGHT 2004, ICON SHELTER SYSTEMS, INC.

1455 LINCOLN AVE.
HOLLAND MI, 49423

616.396.0919
800.748.0985
616.396.0944 FX

Roof Layout

DRAWN BY:
MH
DATE:
10/30/2023
PRELIMINARY ID:
81298
REVISION:
A
BUILDING TYPE:
MP25X30S-P3
PROJECT NAME:



DWG:ineering\Standards\MP\25X30\S-P3-35-90-11\Drawings\Preliminary\MP25x30S-P3-35-90-11~81298.dwg

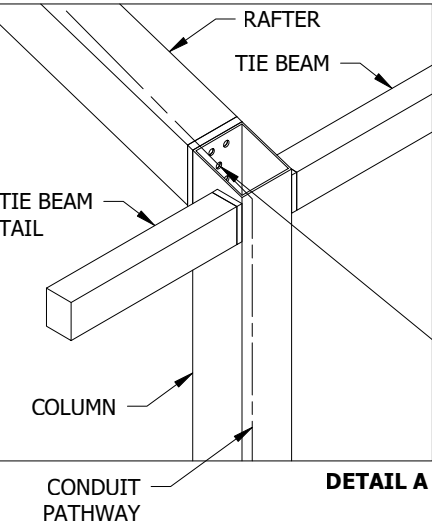
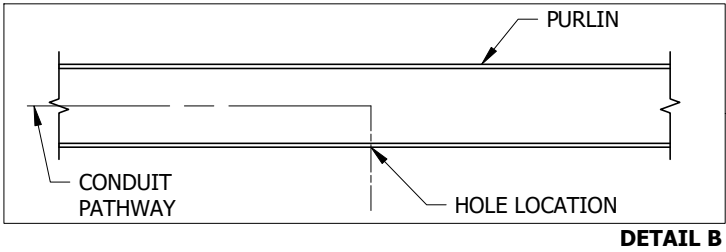
ELECTRICAL INFORMATION - MONOSLOPE

ICON'S STANDARD ELECTRICAL IS DESIGNED TO ACCOMMODATE Ø1/2" CONDUIT WITH A Ø3" INLET HOLE ON THE BOTTOM OF EACH COLUMN. THE CONDUIT PATHWAY RUNS THROUGH THE COLUMN, RAFTER, AND RIDGE BEAM THROUGH ALL BOLTED CONNECTIONS AS SHOWN. IF YOU HAVE SPECIAL ELECTRICAL REQUIREMENTS, PLEASE OUTLINE ANY CHANGES BELOW AS DESCRIBED.

PLEASE NOTE: DESIGN LIMITATIONS ON HOLE/CUTOUT SIZES MAY APPLY. ICON WILL REACH OUT TO DISCUSS ANY SUCH LIMITATIONS AS NEEDED.

NOTE: ICON SHELTER FRAME IS NOT UL LISTED TO ACT AS A CONDUIT FOR ELECTRICAL WIRING. CONSULT LOCAL BUILDING CODES WHEN PLANNING YOUR ELECTRICAL SYSTEM.

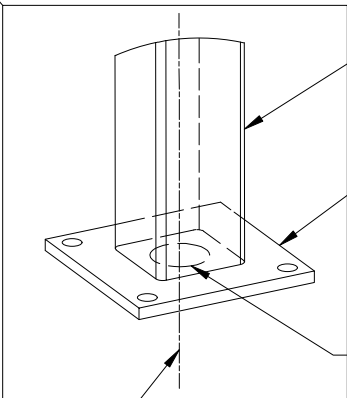
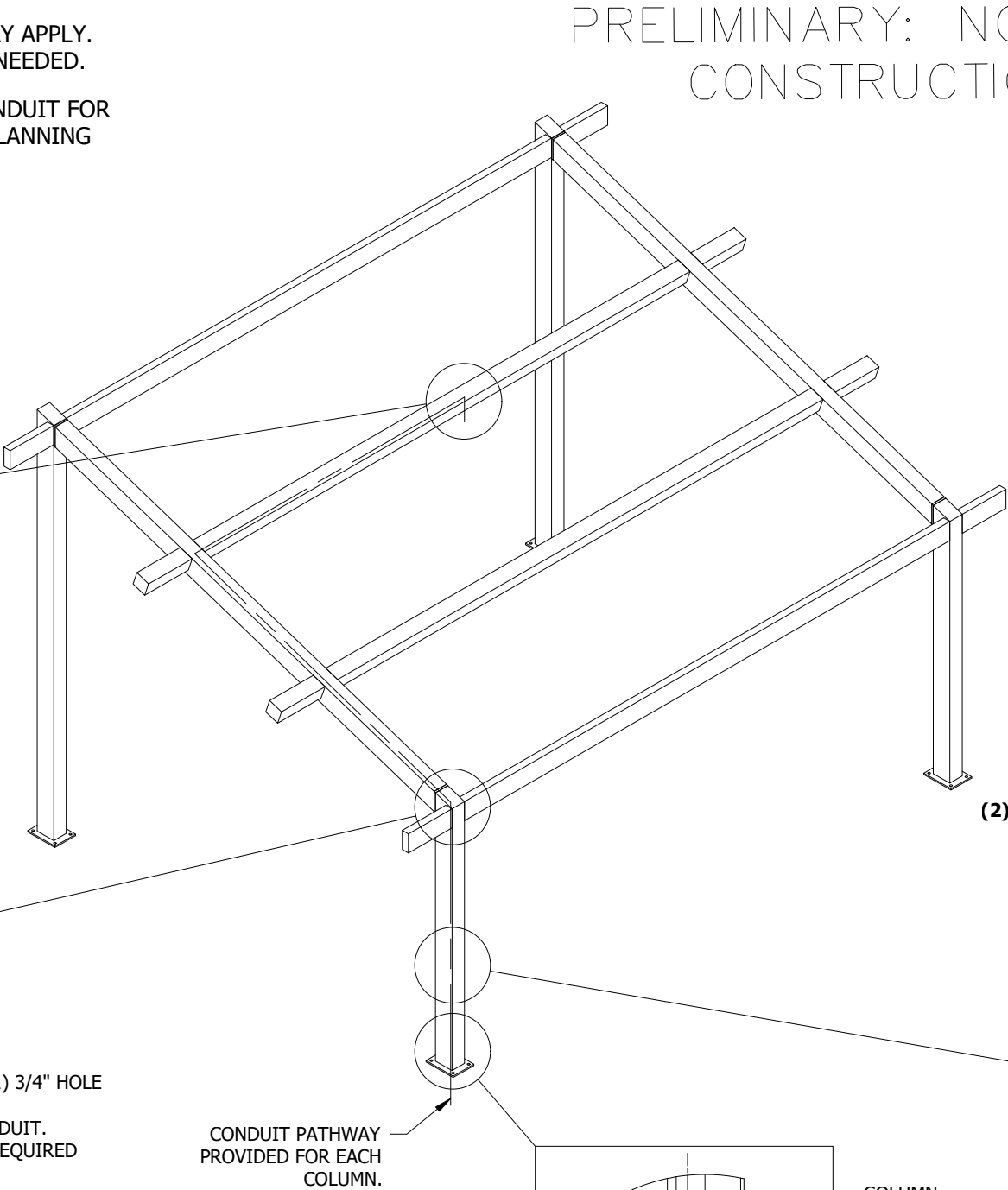
OPTIONAL EXIT HOLES
IF REQUIRED, EXIT HOLES FOR LIGHTING, ETC. CAN BE PLACED IN THE RAFTER AND/OR PURLIN. USE FRAME SHEET OF THIS PRELIMINARY TO SPECIFY REQUIRED EXIT HOLE LOCATIONS AND SIZE.



ICON PROVIDES A MINIMUM OF (1) 3/4" HOLE AT EACH CONNECTION FOR 1/2" CONDUIT. IF APPLICABLE, PLEASE SPECIFY REQUIRED CONDUIT SIZE: (CHARGES APPLY)

- ☐ 3/4" CONDUIT (1" HOLES)
- ☐ 1" CONDUIT (1 1/4" HOLES)
- ☐ OTHER (PLEASE SPECIFY)

NOTE: BUILDING DEPICTED ON THIS SHEET FOR ILLUSTRATION PURPOSES ONLY. ACTUAL LAYOUT AND FRAME MEMBER QUANTITIES VARY BY DESIGN. PLEASE REFER TO ELEVATION AND FRAME SHEETS IN THIS PRELIMINARY FOR ORDER-SPECIFIC CONFIGURATION.

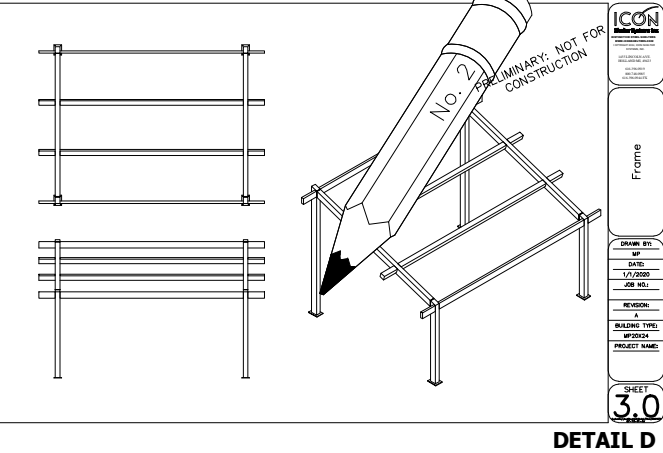


CONDUIT (NOT BY ICON)

PRELIMINARY: NOT FOR CONSTRUCTION

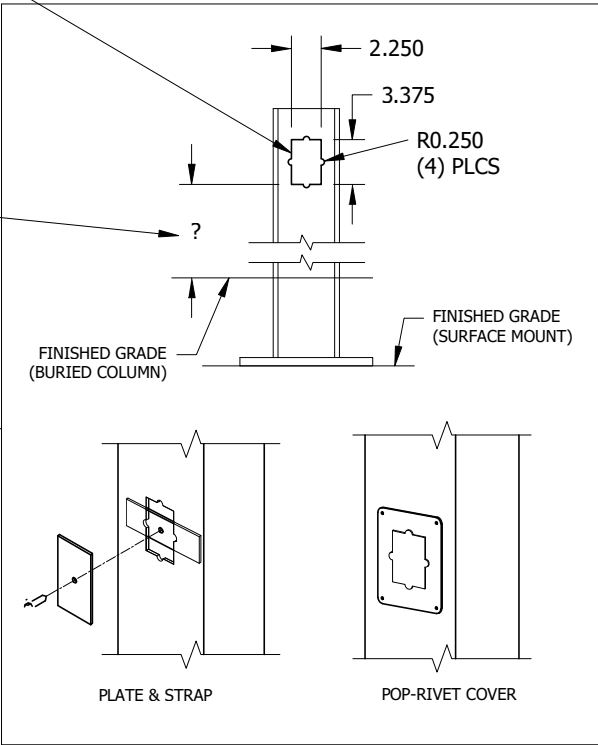
- STEPS:**
1. CONDUIT HOLE SIZE (DETAIL A)
 2. ELECTRICAL EXIT HOLES (DETAIL B)
 3. ELECTRICAL ACCESS & COVER PLATES (DETAIL C)
 4. ELECTRICAL CONDUIT PATHWAY (DETAIL D)

IF REQUIRED, PLEASE DRAW THE NECESSARY ELECTRICAL CONDUIT PATHWAY ON THE FRAME SHEET OF THIS PRELIMINARY.



OPTIONAL CUTOUTS
USE FRAME SHEET OF THIS PRELIMINARY TO SPECIFY REQUIRED CUTOUT LOCATIONS (CHARGES APPLY) SEE REQUIRED INFO BELOW

- (1) STANDARD CUTOUT SIZE SHOWN. SPECIFY IF OTHER SIZE REQUIRED.
- (2) CUTOUTS WILL BE ON INSIDE FACE OF COLUMN UNLESS OTHERWISE INDICATED ON FRAME SHEET.
- (3) SPECIFY HEIGHT ABOVE FINISHED GRADE FOR EACH CUTOUT AS SHOWN



- (4) COVER PLATES PROVIDED UPON REQUEST (CHARGES APPLY)
PLEASE SPECIFY TYPE AND QUANTITY REQUIRED:
- ☐ PLATE & STRAP
 - ☐ POP-RIVET COVER PLATE
- HOW MANY REQUIRED? _____

ICON
Shelter Systems Inc
DISTINCTIVE STEEL SHELTERS
WWW.ICONSHelters.COM
COPYRIGHT 2004, ICON SHELTER SYSTEMS, INC.

1455 LINCOLN AVE.
HOLLAND MI, 49423

616.396.0919
800.748.0985
616.396.0944 FX

Electrical

DRAWN BY: _____
MH

DATE: _____
10/30/2023

PRELIMINARY ID: _____
81298

REVISION: _____
A

BUILDING TYPE: _____
MP25X30S-P3

PROJECT NAME: _____

SHEET
5.0

Engineering\AcadStandard\Blocks\Titles\CONPRETS QF-73-01-42

DWG: ineeering\Standards\MP\25X30\S-P3-35-90-11\Drawings\ Preliminary\MP25x30S-P3-35-90-11~81298.dwg