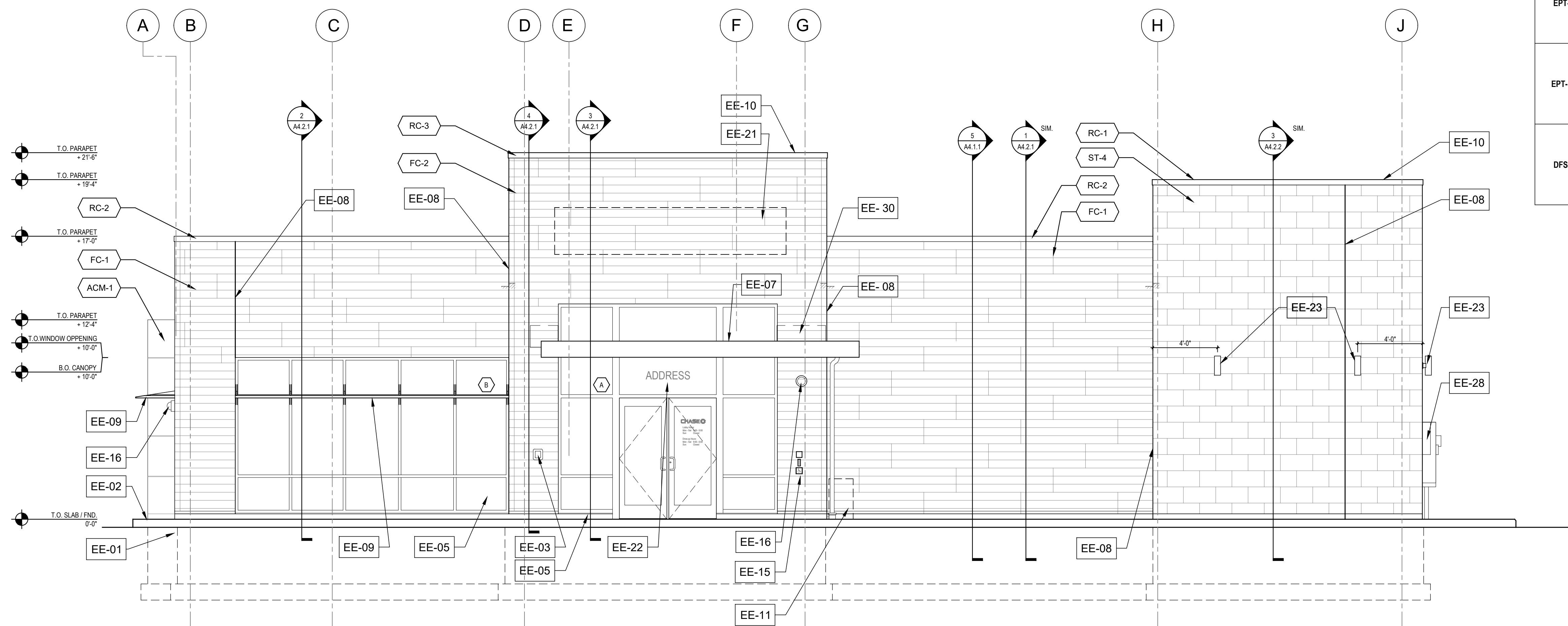


1 WEST ELEVATION
A2.2 1/4"=1'-0"



2 SOUTH ELEVATION
A2.2 1/4"=1'-0"

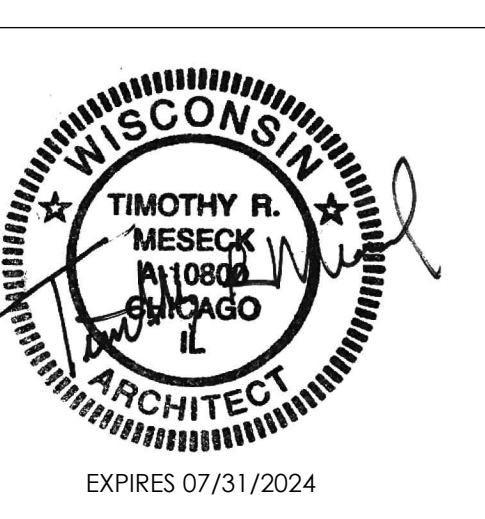
EXTERIOR FINISH MATERIALS	
ST-4	MANUFACTURED THIN STONE VENEER
	MANUFACTURER BORAL HEWN FOUNDATION
	PRODUCT CULTURED STONE
	COLOR CREAM
	SIZE 22" WIDE x 5" HIGH x 1.58" THICK
ST-4 ALT	MANUFACTURED THIN STONE VENEER SUBSTITUTE
	REFER TO PROJECT MANUAL SECTION 047300 - MANUFACTURED STONE VENEER FOR SUBSTITUTE PRODUCT OPTIONS WHEN THE PRIMARY PRODUCT IS NOT AVAILABLE.
FC-1	FIBER CEMENT PANEL - DARK
	MANUFACTURER NICHHA FIBER CEMENT
	PRODUCT VINTAGEWOOD AWP 1818 (AVAILABLE AS AWP 3030 FOR NON-PROTOTYPICAL PROJECTS)
	COLOR BARK
FC-2	FIBER CEMENT PANEL - LIGHT
	MANUFACTURER NICHHA FIBER CEMENT
	PRODUCT VINTAGEWOOD AWP 1818 (AVAILABLE AS AWP 3030 FOR NON-PROTOTYPICAL PROJECTS)
	COLOR ASH
RC-1	ROOF COPING - CAST STONE
	MANUFACTURER PETERSEN ALUMINUM / PAC-CLAD
	PRODUCT PAC-CONTINUOUS
RC-2	ROOF COPING - FIBER CEMENT PANEL DARK
	MANUFACTURER PETERSEN ALUMINUM / PAC-CLAD
	PRODUCT PAC-CONTINUOUS
RC-3	ROOF COPING - FIBER CEMENT PANEL LIGHT
	MANUFACTURER PETERSEN ALUMINUM / PAC-CLAD
	PRODUCT PAC-CONTINUOUS
ACM-1	ALUMINUM COMPOSITE MATERIAL
	MANUFACTURER ARCONIC ARCHITECTURAL PRODUCTS
EPT-1	EXTERIOR PAINT
	MANUFACTURER SHERWIN-WILLIAMS
	PRODUCT METALATEX ACRYLIC SEMI-GLOSS
	COLOR SW 7045 INTELLECTUAL GRAY
EPT-2	EXTERIOR PAINT
	MANUFACTURER SHERWIN-WILLIAMS
	PRODUCT METALATEX ACRYLIC SEMI-GLOSS
	COLOR SW 7036 ACCESSIBLE BEIGE
EPT-8	EXTERIOR PAINT
	MANUFACTURER SHERWIN-WILLIAMS
	PRODUCT METALATEX ACRYLIC SEMI-GLOSS
	COLOR SW 6995 SUPERWHITE
EPT-9	EXTERIOR PAINT - OPTIONAL MATCH TO NICHHA BARK
	MANUFACTURER SHERWIN-WILLIAMS
	PRODUCT METALATEX ACRYLIC
	COLOR SW 7675 SEALSKIN
EPT-10	EXTERIOR PAINT - OPTIONAL MATCH TO NICHHA ASH
	MANUFACTURER SHERWIN-WILLIAMS
	PRODUCT METALATEX ACRYLIC
	COLOR SW 7018 DOVETAIL
DFS-1	DIRECT-APPLY FINISH SYSTEM (ALT. TO PAINTED STEEL DECK)
	MANUFACTURER STO
	PRODUCT STQIQUK GOLD

ELEVATION GENERAL NOTES	
•	AT ALL 90 DEGREE CAST STONE CORNERS UTILIZE "L" SHAPED CAST STONE CORNER. DO NOT USE MITERED CORNERS.
	SEE SHEET A3.2 FOR WINDOW SCHEDULE.
	PAINT EXTERIOR SIDE OF EXTERIOR METAL DOORS EPT-1.
•	PROVIDE MASONRY SEALER / GRAFFITI CONTROL ON ALL MASONRY SURFACES FROM GRADE TO PARAPET.
EE-01	CONCRETE FOOTINGS / FOUNDATIONS: REFER TO STRUCTURAL DWGS.
EE-02	CONCRETE CURB AND ISLANDS: REFER TO ARCHITECTURAL SITE PLAN AND DRIVE-UP CANOPY PLAN.
	EMERGENCY ACCESS KEY BOX: WHERE REQUIRED BY LOCAL CODE ONLY. RECESS-MOUNT IN WALL CONSTRUCTION AS REQD. TO SET FACE FLUSH WITH ADJACENT WALL FINISH. VERIFY FINAL LOCATION WITH AUTHORITIES HAVING JURISDICTION. SEE DET. 4A5.2.2.
EE-03	LIGHTING TIMER SYSTEM PHOTO SENSOR: REFER TO ELECTRICAL DRAWINGS.
EE-04	ALUMINUM STOREFRONT SYSTEM
EE-05	LANDSCAPE IRRIGATION SYSTEM CONTROLLER. WIRELESS NETWORK CONNECTOR, AND DEDICATED WP POWER OUTLET. G.C. TO PAINT TO MATCH ADJACENT EXTERIOR MATERIAL.
EE-06	ENTRANCE / ATM CANOPY: SHOP FABRICATED SITE ASSEMBLED PRE-FINISHED BLACK CUSTOM ALUMINUM CANOPY UNIT WITH PREPARED ELECTRICAL OPENINGS AND INTEGRAL DRAINAGE SYSTEM FASTENED TO BUILDING STRUCTURE. MAPES ARCHITECTURAL CANDLES SUPER LUMINOUS WITH FLAT SOFFIT AND 12" FASCIA. OR APPROVED EQUAL. REFER TO ROOF PLAN AND WALL SECTIONS. INSTALLED BY G.C.
EE-07	CONTROL JOINT: VERTICAL ELASTOMERIC SEALANT JOINT CONTINUOUS THROUGH VENEER. MATCH SEALANT COLOR TO VENEER COLOR. ALSO PLACE CONTROL JOINTS AT EACH INSIDE CORNER (NOT GRAPHICALLY INDICATED).
EE-08	SUN SHADE: GLAZING SYSTEM MANUFACTURER'S STANDARD INTEGRAL SHADE ACCESSORY - REFER TO WALL SECTIONS. MATCH GLAZING SYSTEM FINISH.
EE-09	COPING: REFER TO ROOF PLAN.
EE-10	SMALL CANOPY DOWNSPOUT/OVERFLOW: 3" DIAM ALUMINUM DOWNSPOUT PRE-FIN. TO MATCH THE CANOPY. CONNECT TO CAST IRON DRAIN HUB AT GRADE AND EXTEND SUBSURFACE TO SITE DRAINAGE SYSTEM. REFER TO SITE PLAN.
EE-11	SCUPPER: REFER TO ROOF PLAN AND DETAILS.
EE-12	ROOF OVERFLOW DOWNSPOUT/NOZZLE WITH INTEGRAL INSECT SCREEN. REFER TO PLUMBING DRAWINGS, FIXTURE SCHEDULE, AND DESIGN INTENT ARCHITECTURAL SITE PLAN.
EE-13	SURFACE MOUNTED EMERGENCY LIGHT FIXTURE: REFER TO REFLECTED CEILING PLAN & LIGHT FIXTURE SCHEDULE ON ELECTRICAL DRAWINGS.
EE-14	AUTOMATIC DOOR OPERATOR BUTTON AND KEYCARD READER RECESSED FLUSH WITH WALL SURFACE. DO NOT SURFACE MOUNT. REFER TO DETAIL 2A3.2.
EE-15	SECURITY CAMERA: REFER TO ELECTRICAL DRAWINGS.
EE-16	ROOF LADDER: REFER TO DETAIL DRAWINGS.
EE-17	NOT USED
EE-18	NOT USED
EE-19	NOT USED
EE-20	NOT USED
EE-21	SIGNAGE: BY OWNER'S SIGN VENDOR. N.I.C. PROVIDE ROUGH ELEC. WORK AND BLOCKING IN WALL AS REQD. FOR VENDOR INSTALLATION.
EE-22	BUILDING ADDRESS NUMBER: WHITE VINYL NUMBERS WITH 1/2" WIDE STROKE APPLIED TO INTERIOR FACE OF GLASS TRANSOM. MIN. 6" HEIGHT OR AS REQD. BY LOCAL CODE. PROVIDED BY GC.
EE-23	LIGHT FIXTURE: REFER TO LIGHT FIXTURE SCHEDULE.
EE-24	HOSE BIB: SET FLUSH WITH FACE OF MASONRY VENEER. REFER TO PLUMBING FIXTURE SCHEDULE. G.C. TO PAINT TO MATCH ADJACENT EXTERIOR MATERIAL.
EE-25	ELECTRICAL OUTLET: SET FLUSH WITH FACE OF MASONRY VENEER. PROVIDE METAL COVER COMPLIANT WITH N.E.C. G.C. TO PAINT TO MATCH ADJACENT EXTERIOR MATERIAL.
EE-26	UTILITY EQUIPMENT: PROVIDE AND INSTALL UTILITY TERMINATION CABINETS AND METERS AS REQUIRED. COORD. WITH OWNER'S SECURITY AND TELE-DATA SERVICES. COORD. CABINET AND METER LOCATIONS WITH LOCAL JURISDICTION. REFER TO SITE PLAN.
EE-27	NOT USED
EE-28	ELECTRICAL SERVICE C.T. / METER CABINET. G.C. TO PAINT TO MATCH ADJACENT EXTERIOR MATERIAL.
EE-29	FIRE ALARM SYSTEM BELL AND STROBE: WHERE REQUIRED BY LOCAL CODE ONLY. VERIFY FINAL LOCATION WITH LOCAL AUTHORITIES HAVING JURISDICTION.
EE-30	METAL FLASHING AND COUNTER FLASHING CONCEALED BEHIND WALL FINISH. FINISH OF EXPOSED FLASHING TO MATCH ADJACENT ROOFING/COPING.
EE-31	TELE / DATA / UTILITY CONNECTIONS: COORDINATE FINAL LOCATION WITH CIVIL ENGINEER. G.C. TO PAINT TO MATCH ADJACENT EXTERIOR MATERIAL.
EE-32	FLASHING AT PREFAB CANOPY: PRE-FINISHED ALUMINUM FLASHING TO SPAN GAP BETWEEN PREFAB CANOPY AND BUILDING CONCEALED BEHIND WALL FINISH. REFER TO WALL SECTIONS AND DETAILS. COLOR TO MATCH FC-2. VERIFY FINAL FLASHING LENGTH AND CONFIGURATION WITH APPROVED CANOPY SHOP DWGS.



WAUWATOSA
RETAIL BANKING CENTER
11111 WEST BURLEIGH STREET
WAUWATOSA, WI, 53222

48100R001319
ARCHITECT/ENGINEER OF RECORD

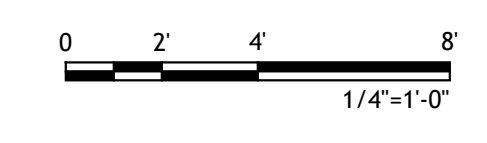


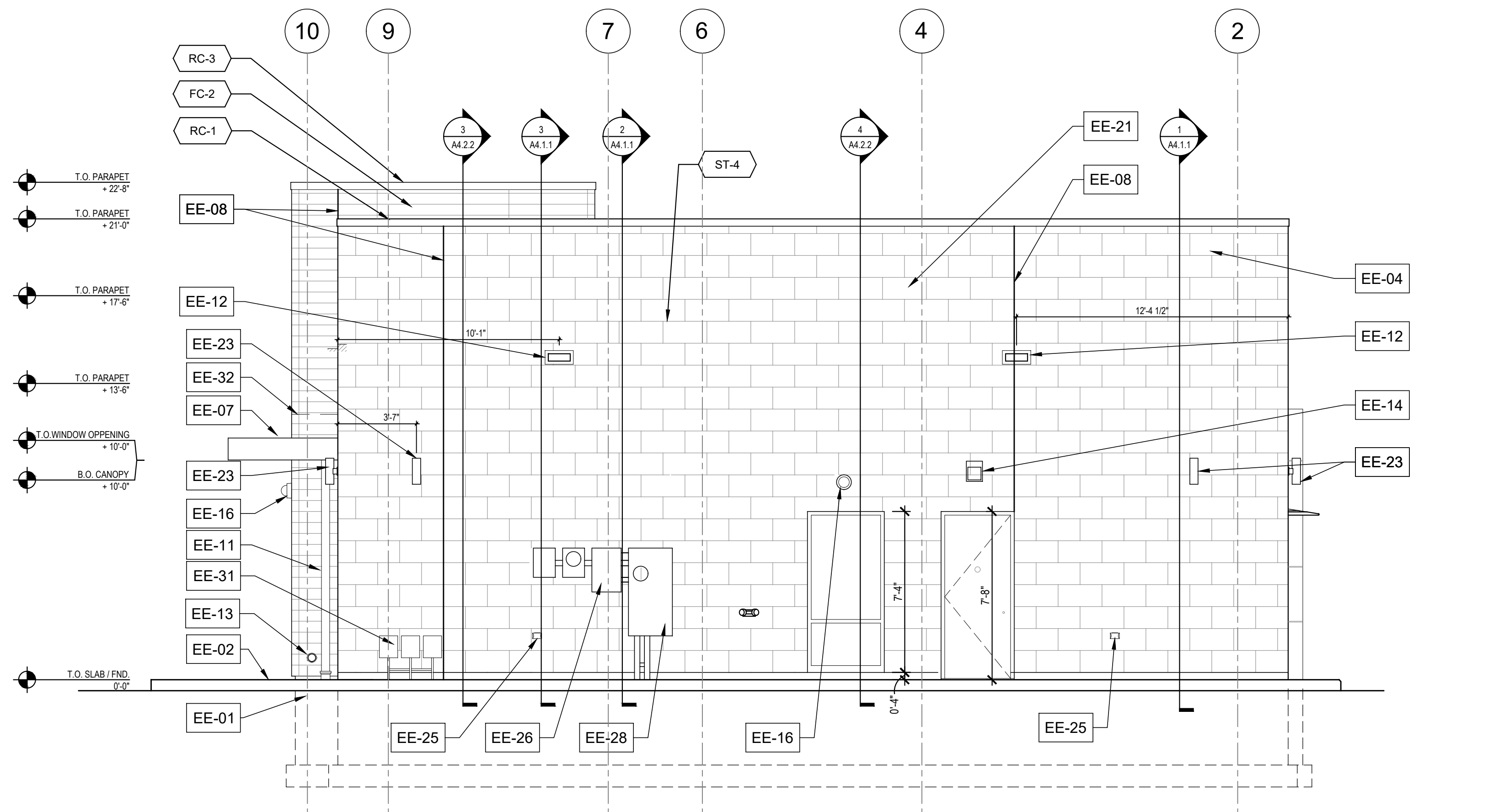
ISSUE	DATE	DESCRIPTION
	02-02-2024	ISSUE FOR PERMIT/BID SET

PROJECT INFORMATION BLOCK	
JOB #	231032
DRAWN BY:	HA / AM
CHECKED BY:	DS / TM

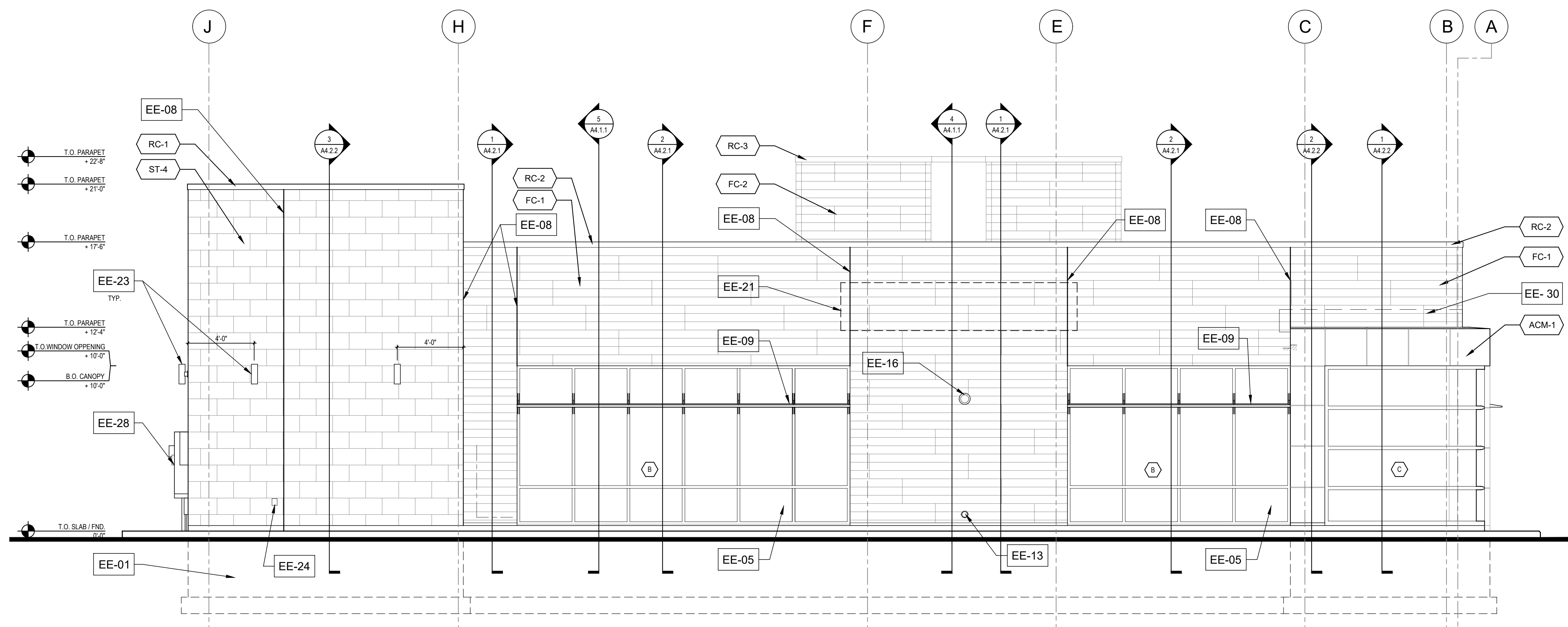
SHEET TITLE
EXTERIOR ELEVATIONS

SHEET NUMBER
A2.1





1 EAST ELEVATION
A2.2 1/4"=1'-0"



2 NORTH ELEVATION
A2.2 1/4"=1'-0"

EXTERIOR FINISH MATERIALS	
ST-4	MANUFACTURED THIN STONE VENEER
	MANUFACTURER BORAL HEWYN FOUNDATION
	PRODUCT CULTURED STONE
	COLOR CREAM
	SIZE 22" WIDE x 5" HIGH x 1.58" THICK
ST-4 ALT	MANUFACTURED THIN STONE VENEER SUBSTITUTE
	REFER TO PROJECT MANUAL SECTION 047300 - MANUFACTURED STONE VENEER FOR SUBSTITUTE PRODUCT OPTIONS WHEN THE PRIMARY PRODUCT IS NOT AVAILABLE.
FC-1	FIBER CEMENT PANEL - DARK
	MANUFACTURER NICHHA FIBER CEMENT
	PRODUCT VINTAGEWOOD AWP 1818 (AVAILABLE AS AWP 3030 FOR NON-PROTOTYPICAL PROJECTS)
	COLOR BARK
FC-2	FIBER CEMENT PANEL - LIGHT
	MANUFACTURER NICHHA FIBER CEMENT
	PRODUCT VINTAGEWOOD AWP 1818 (AVAILABLE AS AWP 3030 FOR NON-PROTOTYPICAL PROJECTS)
	COLOR ASH
RC-1	ROOF COPING - CAST STONE
	MANUFACTURER PETERSEN ALUMINUM / PAC-CLAD
RC-2	ROOF COPING - FIBER CEMENT PANEL DARK
	MANUFACTURER PETERSEN ALUMINUM / PAC-CLAD
RC-3	ROOF COPING - FIBER CEMENT PANEL LIGHT
	MANUFACTURER PETERSEN ALUMINUM / PAC-CLAD
ACM-1	ALUMINUM COMPOSITE MATERIAL
	MANUFACTURER ARCONIC ARCHITECTURAL PRODUCTS
EPT-1	EXTERIOR PAINT
	MANUFACTURER SHERWIN-WILLIAMS
	PRODUCT METALATEX ACRYLIC SEMI-GLOSS
	COLOR SW 7045 INTELLECTUAL GRAY
EPT-2	EXTERIOR PAINT
	MANUFACTURER SHERWIN-WILLIAMS
	PRODUCT METALATEX ACRYLIC SEMI-GLOSS
	COLOR SW 7036 ACCESSIBLE BEIGE
EPT-8	EXTERIOR PAINT
	MANUFACTURER SHERWIN-WILLIAMS
	PRODUCT METALATEX ACRYLIC SEMI-GLOSS
	COLOR SW 6995 SUPERWHITE
EPT-9	EXTERIOR PAINT - OPTIONAL MATCH TO NICHHA BARK
	MANUFACTURER SHERWIN-WILLIAMS
	PRODUCT METALATEX ACRYLIC
	COLOR SW 7675 SEALSKIN
EPT-10	EXTERIOR PAINT - OPTIONAL MATCH TO NICHHA ASH
	MANUFACTURER SHERWIN-WILLIAMS
	PRODUCT METALATEX ACRYLIC
	COLOR SW 7018 DOVETAIL
DFS-1	DIRECT-APPLY FINISH SYSTEM (ALT. TO PAINTED STEEL DECK)
	MANUFACTURER STO
	PRODUCT STOQUIK GOLD

ELEVATION GENERAL NOTES	
•	AT ALL 90 DEGREE CAST STONE CORNERS UTILIZE "L" SHAPED CAST STONE CORNER. DO NOT USE MITERED CORNERS.
•	SEE SHEET A3.2 FOR WINDOW SCHEDULE.
•	PAINT EXTERIOR SIDE OF EXTERIOR METAL DOORS EPT-1.
•	PROVIDE MASONRY SEALER / GRAFFITI CONTROL ON ALL MASONRY SURFACES FROM GRADE TO PARAPET.
EE-01	CONCRETE FOOTINGS / FOUNDATIONS: REFER TO STRUCTURAL DWGS.
EE-02	CONCRETE CURB AND ISLANDS: REFER TO ARCHITECTURAL SITE PLAN AND DRIVE-UP CANOPY PLAN.
EE-03	EMERGENCY ACCESS KEY BOX: WHERE REQUIRED BY LOCAL CODE ONLY. RECESS-MOUNT IN WALL CONSTRUCTION AS REQD. TO SET FACE FLUSH WITH ADJACENT WALL FINISH. VERIFY FINAL LOCATION WITH AUTHORITIES HAVING JURISDICTION. SEE DET. 4A5.2.2.
EE-04	LIGHTING TIMER SYSTEM PHOTO SENSOR: REFER TO ELECTRICAL DRAWINGS.
EE-05	ALUMINUM STOREFRONT SYSTEM
EE-06	LANDSCAPE IRRIGATION SYSTEM CONTROLLER. WIRELESS NETWORK CONNECTOR, AND DEDICATED WP POWER OUTLET. G.C. TO PAINT TO MATCH ADJACENT EXTERIOR MATERIAL.
EE-07	ENTRANCE / ATM CANOPY: SHOP FABRICATED SITE ASSEMBLED PRE-FINISHED BLACK CUSTOM ALUMINUM CANOPY UNIT WITH PREPPED ELECTRICAL OPENINGS AND INTEGRAL DRAINAGE SYSTEM FASTENED TO BUILDING STRUCTURE. MAPES ARCHITECTURAL CANOPIES SUPER LUMINOX WITH FLAT SOFFIT AND 12" FASCIA. OR APPROVED EQUAL. REFER TO ROOF PLAN AND WALL SECTIONS. INSTALLED BY G.C.
EE-08	CONTROL JOINT: VERTICAL ELASTOMERIC SEALANT JOINT CONTINUOUS THROUGH VENEER. MATCH SEALANT COLOR TO VENEER COLOR. ALSO PLACE CONTROL JOINTS AT EACH INSIDE CORNER (NOT GRAPHICALLY INDICATED).
EE-09	SUN SHADE: GLAZING SYSTEM MANUFACTURER'S STANDARD INTEGRAL SHADE ACCESSORY - REFER TO WALL SECTIONS. MATCH GLAZING SYSTEM FINISH.
EE-10	COPIINGS: REFER TO ROOF PLAN.
EE-11	SMALL CANOPY DOWNSPOUT/OVERFLOW: 3" DIAM ALUMINUM DOWNSPOUT PRE-FIN. TO MATCH THE CANOPY. CONNECT TO CAST IRON DRAIN HUB AT GRADE AND EXTEND SUBSURFACE TO SITE DRAINAGE SYSTEM. REFER TO SITE PLAN.
EE-12	SCUPPER: REFER TO ROOF PLAN AND DETAILS.
EE-13	ROOF OVERFLOW DOWNSPOUT/NOZZLE WITH INTEGRAL INSECT SCREEN. REFER TO PLUMBING DRAWINGS, FIXTURE SCHEDULE, AND DESIGN INTENT ARCHITECTURAL SITE PLAN.
EE-14	SURFACE MOUNTED EMERGENCY LIGHT FIXTURE: REFER TO REFLECTED CEILING PLAN & LIGHT FIXTURE SCHEDULE ON ELECTRICAL DRAWINGS.
EE-15	AUTOMATIC DOOR OPERATOR BUTTON AND KEYCARD READER RECESSED FLUSH WITH WALL SURFACE. DO NOT SURFACE MOUNT. REFER TO DETAIL 2A3.2.
EE-16	SECURITY CAMERA: REFER TO ELECTRICAL DRAWINGS.
EE-17	ROOF LADDER: REFER TO DETAIL DRAWINGS.
EE-18	NOT USED
EE-19	NOT USED
EE-20	NOT USED
EE-21	SIGNAGE: BY OWNER'S SIGN VENDOR. N.I.C. PROVIDE ROUGH ELEC. WORK AND BLOCKING IN WALL AS REQD. FOR VENDOR INSTALLATION.
EE-22	BUILDING ADDRESS NUMBER: WHITE VINYL NUMBERS WITH 1/2" WIDE STROKE APPLIED TO INTERIOR FACE OF GLASS TRANSOM. MIN. 6" HEIGHT OR AS REQD. BY LOCAL CODE. PROVIDED BY GC.
EE-23	LIGHT FIXTURE: REFER TO LIGHT FIXTURE SCHEDULE.
EE-24	HOSE BIB: SET FLUSH WITH FACE OF MASONRY VENEER. REFER TO PLUMBING FIXTURE SCHEDULE. G.C. TO PAINT TO MATCH ADJACENT EXTERIOR MATERIAL.
EE-25	ELECTRICAL OUTLET: SET FLUSH WITH FACE OF MASONRY VENEER. PROVIDE METAL COVER COMPLIANT WITH N.E.C. G.C. TO PAINT TO MATCH ADJACENT EXTERIOR MATERIAL.
EE-26	UTILITY EQUIPMENT: PROVIDE AND INSTALL UTILITY TERMINATION CABINETS AND METERS AS REQUIRED. COORD. WITH OWNER'S SECURITY AND TELE-DATA SERVICES. COORD. CABINET AND METER LOCATIONS WITH LOCAL JURISDICTION. REFER TO SITE PLAN.
EE-27	NOT USED
EE-28	ELECTRICAL SERVICE C.T. / METER CABINET. G.C. TO PAINT TO MATCH ADJACENT EXTERIOR MATERIAL.
EE-29	FIRE ALARM SYSTEM BELL AND STROBE: WHERE REQUIRED BY LOCAL CODE ONLY. VERIFY FINAL LOCATION WITH LOCAL AUTHORITIES HAVING JURISDICTION.
EE-30	METAL FLASHING AND COUNTER FLASHING CONCEALED BEHIND WALL FINISH. FINISH OF EXPOSED FLASHING TO MATCH ADJACENT ROOFING/COPING.
EE-31	TELE / DATA / UTILITY CONNECTIONS: COORDINATE FINAL LOCATION WITH CIVIL ENGINEER. G.C. TO PAINT TO MATCH ADJACENT EXTERIOR MATERIAL.
EE-32	FLASHING AT PREFAB CANOPY: PRE-FINISHED ALUMINUM FLASHING TO SPAN GAP BETWEEN PREFAB CANOPY AND BUILDING CONCEALED BEHIND WALL FINISH. REFER TO WALL SECTIONS AND DETAILS. COLOR TO MATCH FC-2. VERIFY FINAL FLASHING LENGTH AND CONFIGURATION WITH APPROVED CANOPY SHOP DWGS.

CHASE

WAUWATOSA
RETAIL BANKING CENTER
11111 WEST BURLEIGH STREET
WAUWATOSA, WI, 53222

48100R001319
ARCHITECT/ENGINEER OF RECORD

tap
The Architects Partnership

SEAL
TIMOTHY R. MESECK
REGISTERED ARCHITECT
WISCONSIN
NOV 10 1988
CHICAGO
EXPIRES 07/31/2024

ISSUE	DATE	DESCRIPTION
	02-02-2024	ISSUE FOR PERMIT/BID SET

PROJECT INFORMATION BLOCK
JOB # 231032
DRAWN BY: HA / AM
CHECKED BY: DS / TM

SHEET TITLE
EXTERIOR ELEVATIONS

SHEET NUMBER
A2.2

