



EAST-WEST

I-94 between 70th Street and 16th Street in Milwaukee County

WisDOT I-94 E-W City of Wauwatosa

July 15, 2025



Agenda



1 I-94 E-W – schedule overview

2 I-94 E-W – TMP

3 Travel demand and Outreach

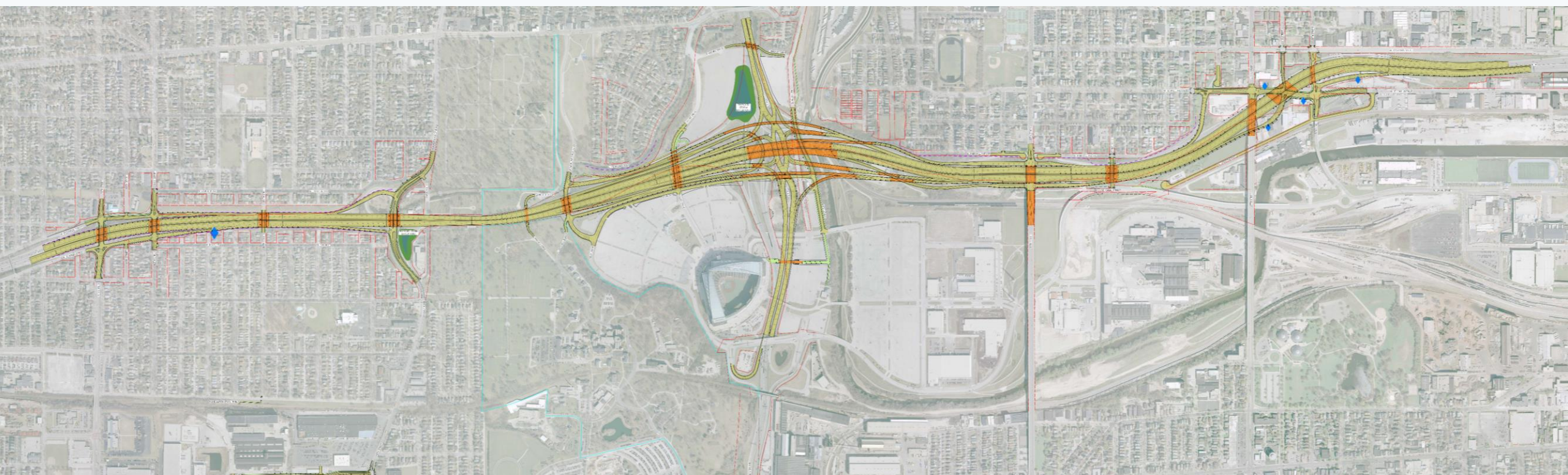
4 Questions and discussion

I-94 E-W schedule overview

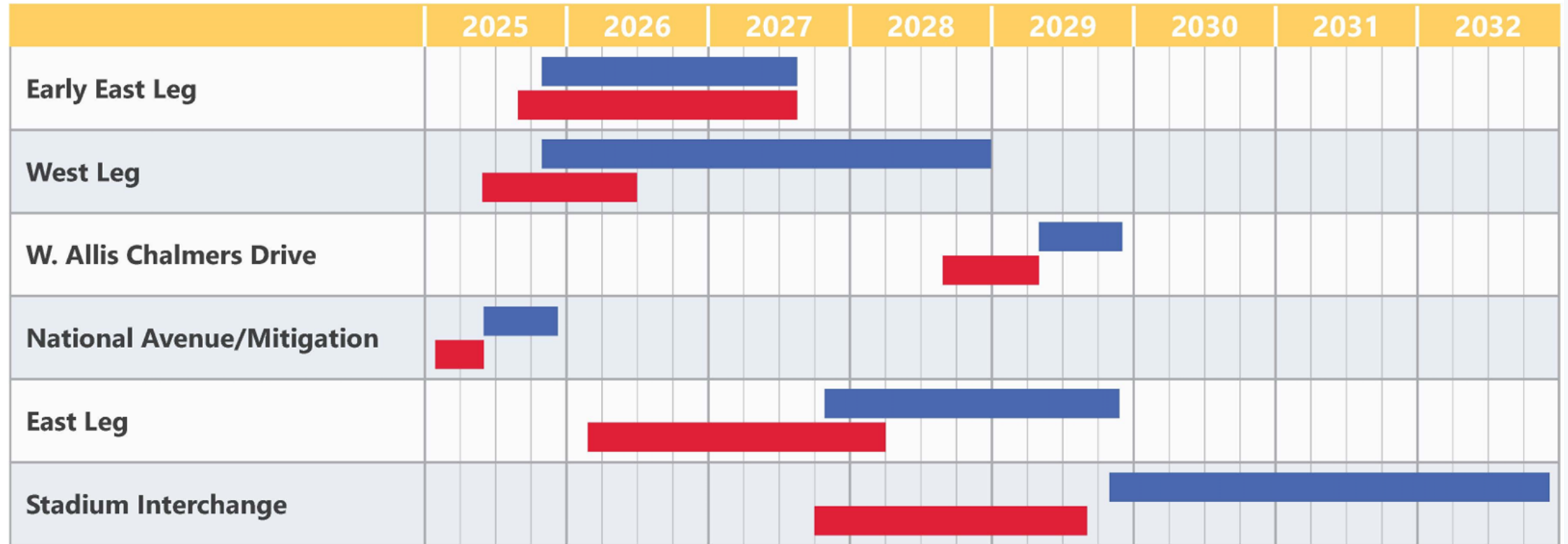


I Plan Moving Forward

- A modernized corridor with four lanes in each direction; maintains closely spaced service interchanges, changing Hawley Road to half-interchange; moves all entrance/exit to right, and increases/improves bicycle and pedestrian connections.



Anticipated Schedule (update coming soon!)



Legend

■ Freeway & Local Road Construction ■ Utility Construction

NOTE: Construction schedule dependent on future funding allocations.

Anticipated Utility Schedule

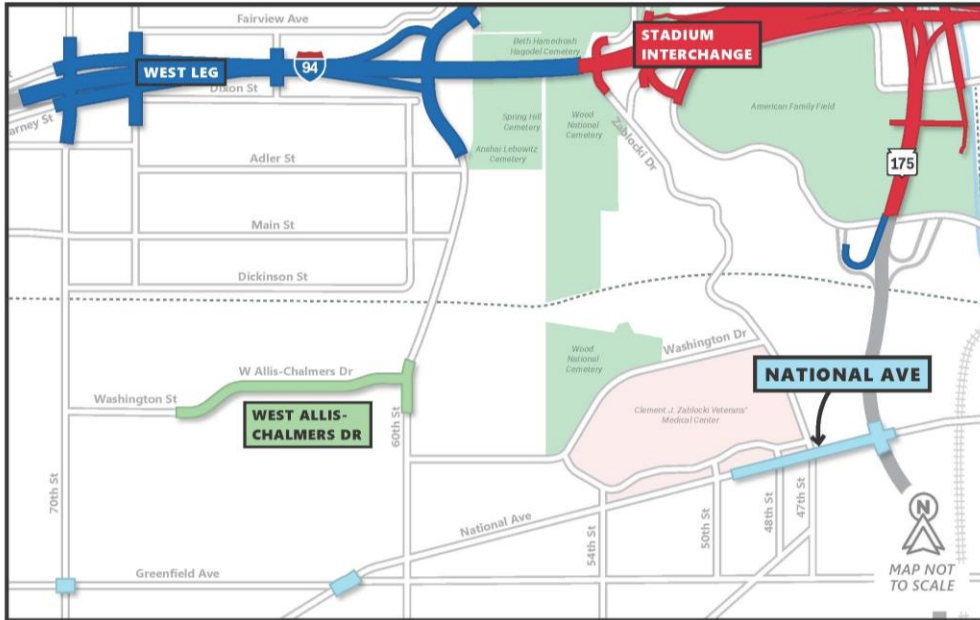


Note: Utility relocation routes and schedules are subject to change

I-94 E-W TMP



I National Avenue Project



PROJECT PURPOSE:

Improve local routes due to permanent Hawley Rd ramp closures

TIMELINE:

Summer/Fall 2025

PROJECT LIMITS:

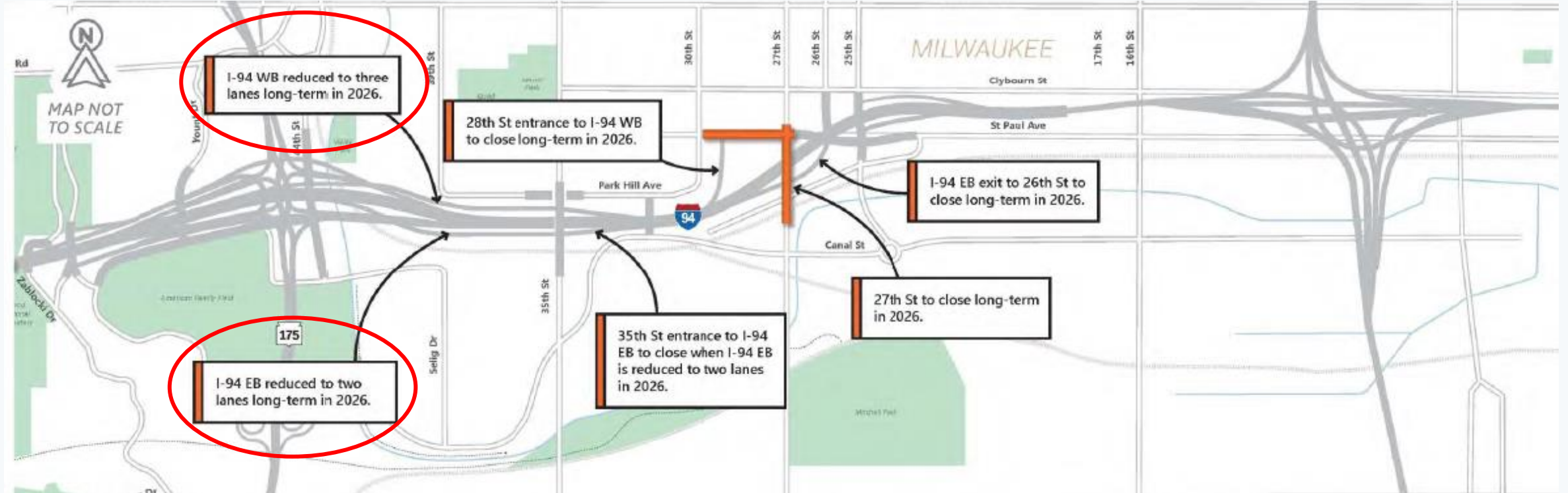
Various locations

- > National Ave from Miller Park Way to 50th St
- > National Ave and Miller Park Way
- > National Ave and Greenfield Ave
- > Greenfield Ave and 70th St

CONSTRUCTION TRAFFIC IMPACTS:

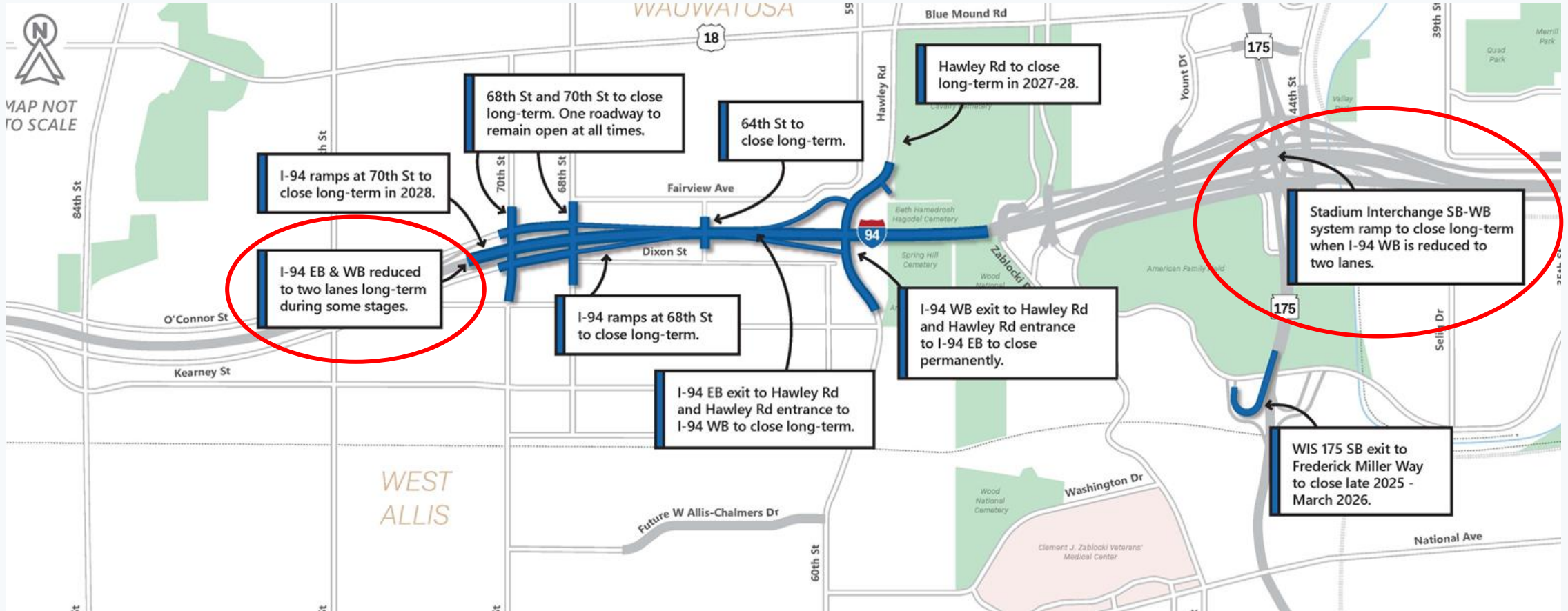
- > Long-term lane closures at National Ave and Miller Park Way
- > Long-term lane closure on National Ave at Greenfield Ave
- > Off-peak lane closure at Greenfield Ave and 70th St

I Early East Leg Construction Overview



The closures reflected on this page will not all be closed at the same time. Project staging is being finalized and subject to change.

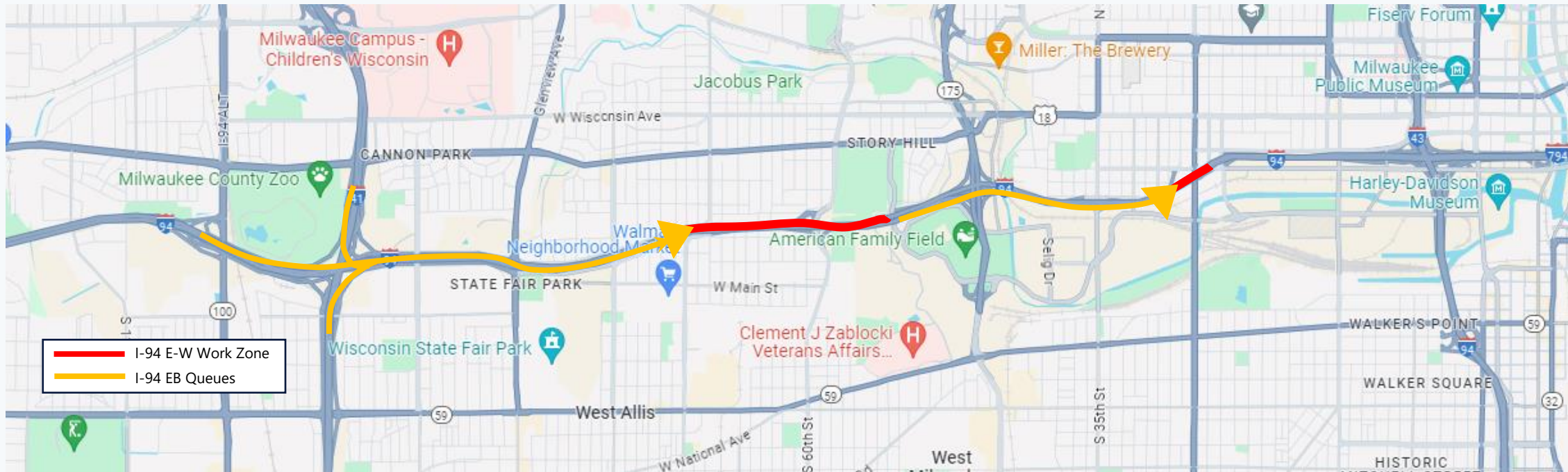
West Leg Construction Overview



The closures reflected on this page will not all be closed at the same time. Project staging is being finalized and subject to change.

I Anticipated Traffic Impacts

I-94 Eastbound Traffic Queueing/Delays (West Leg, Early East Leg)

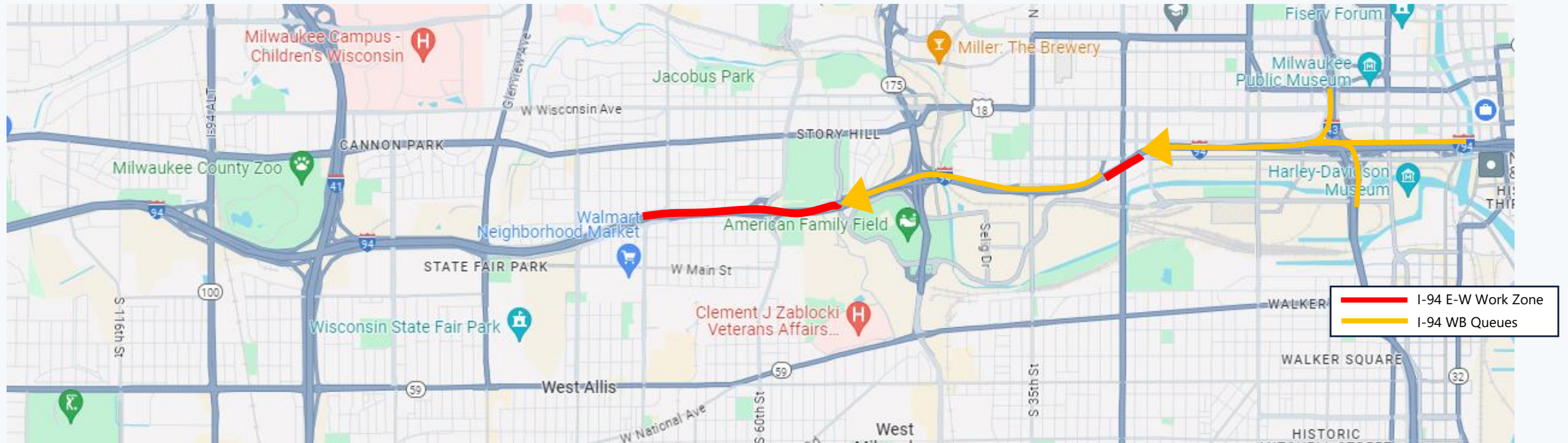


I-94 queueing and delays are anticipated to be experienced from AM peak through PM peak Monday-Friday, and mid-day queueing/delays on weekends.

Note: work zone models show substantially lower queues and delays if diversion from I-94 approaches 40%

I Anticipated Traffic Impacts, continued

I-94 Westbound Traffic Queueing/Delays (West Leg, Early East Leg)

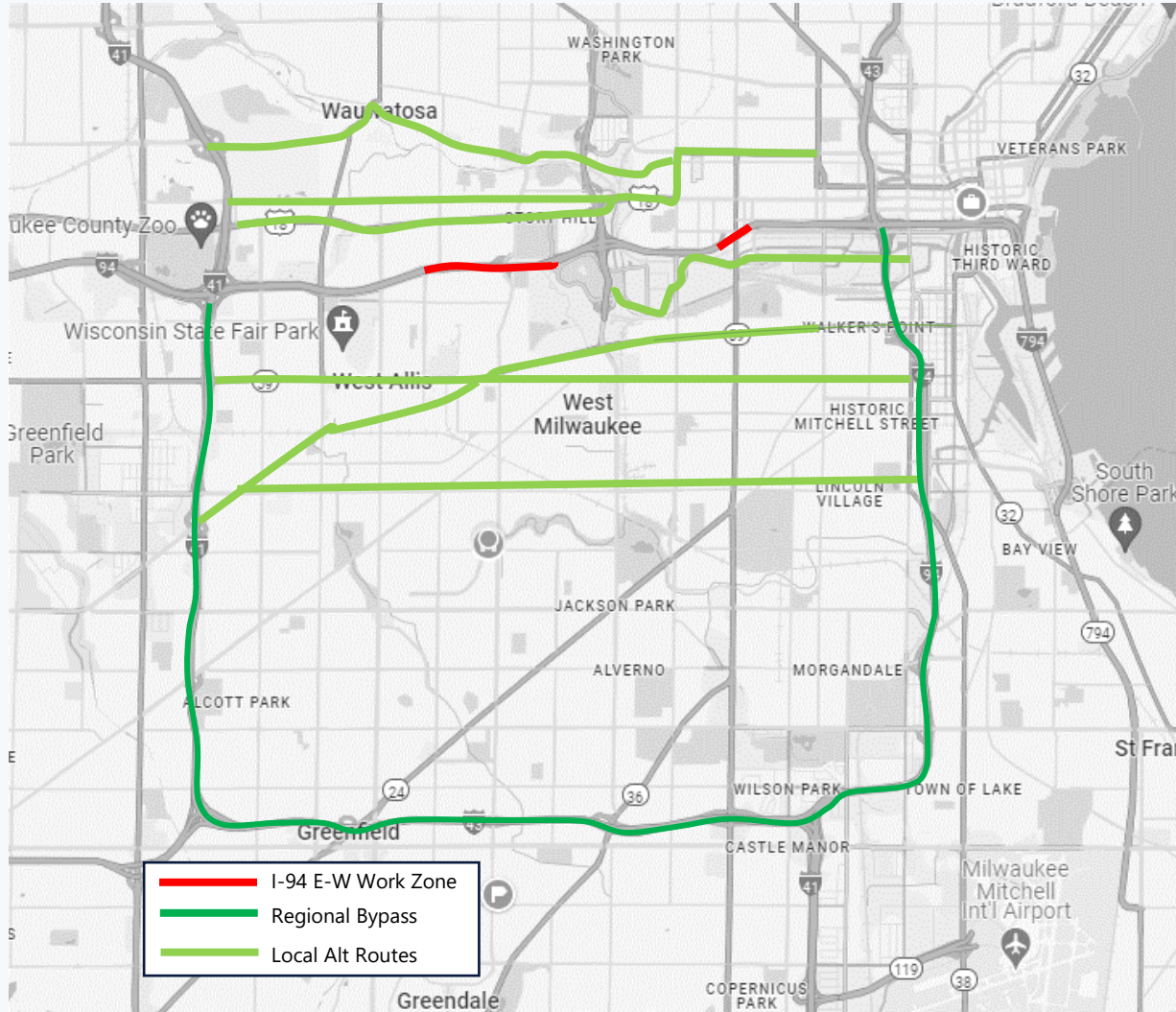


I-94 queueing and delays are anticipated to be experienced from AM peak through PM peak Monday-Friday, and mid-day queueing/delays on weekends.

Note: work zone models show substantially lower queues and delays if diversion from I-94 approaches 40%

I Local Road Detours & Regional Alternate Routes

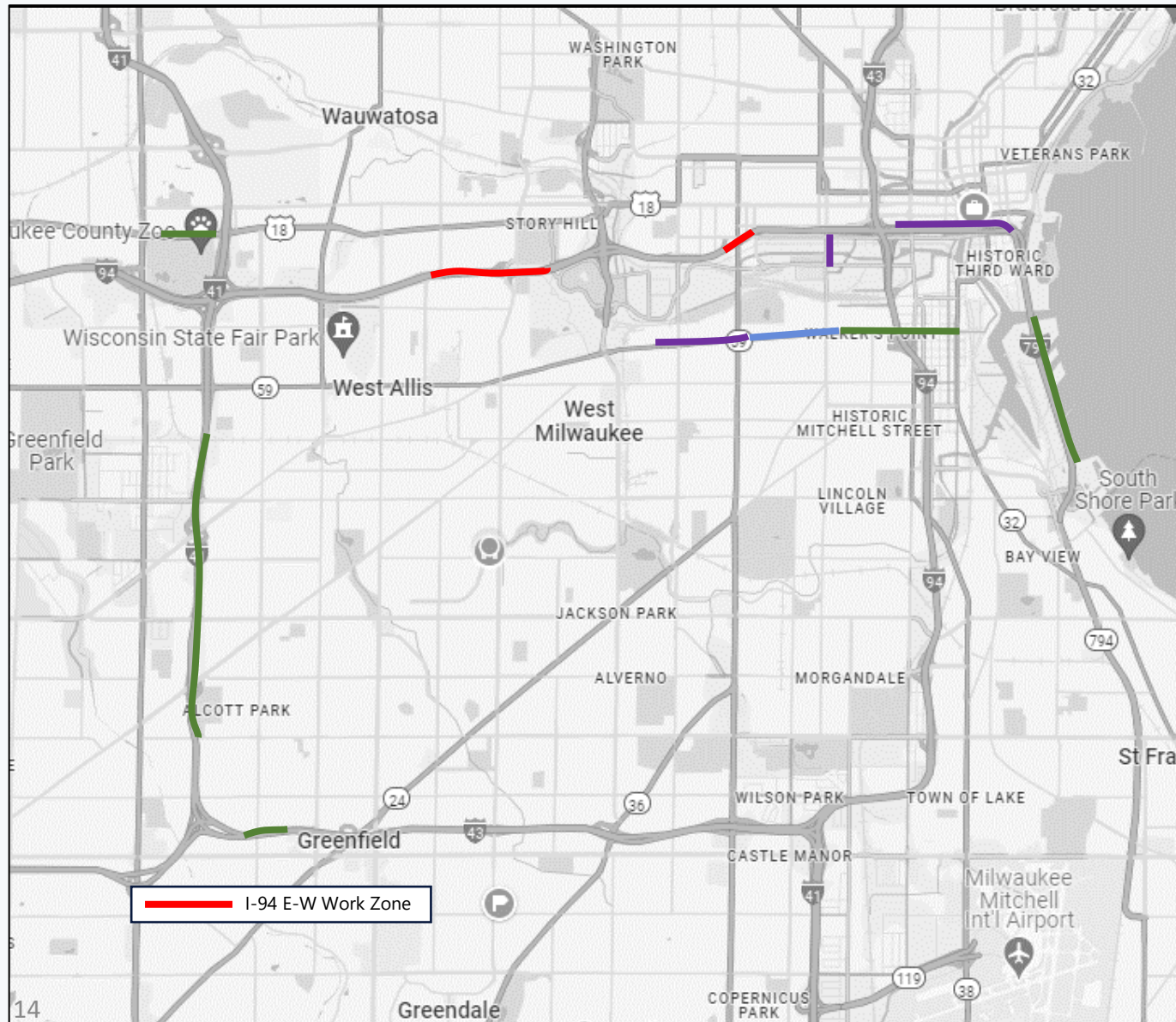
I-94 East-West Diversion (West Leg, Early East Leg)



Primary Diversion Routes include:

- WIS 100 (Brown Deer Rd) and I-894 as regional bypass routes
- State St, Wisconsin Ave, Blue Mound Rd on the North side of I-94
- Canal St, National Ave, Greenfield Ave, and Lincoln Ave on the South side of I-94
- North-South routes (not highlighted on map) include:
 - 35th St (primary diversion for 27th St closure)
 - STH 175
 - STH 145

I Adjacent Projects



2026:

- National Ave, 27th St to 39th St
- 16th St, over Menomonee River
- I-794, Marquette Int to Lake Int

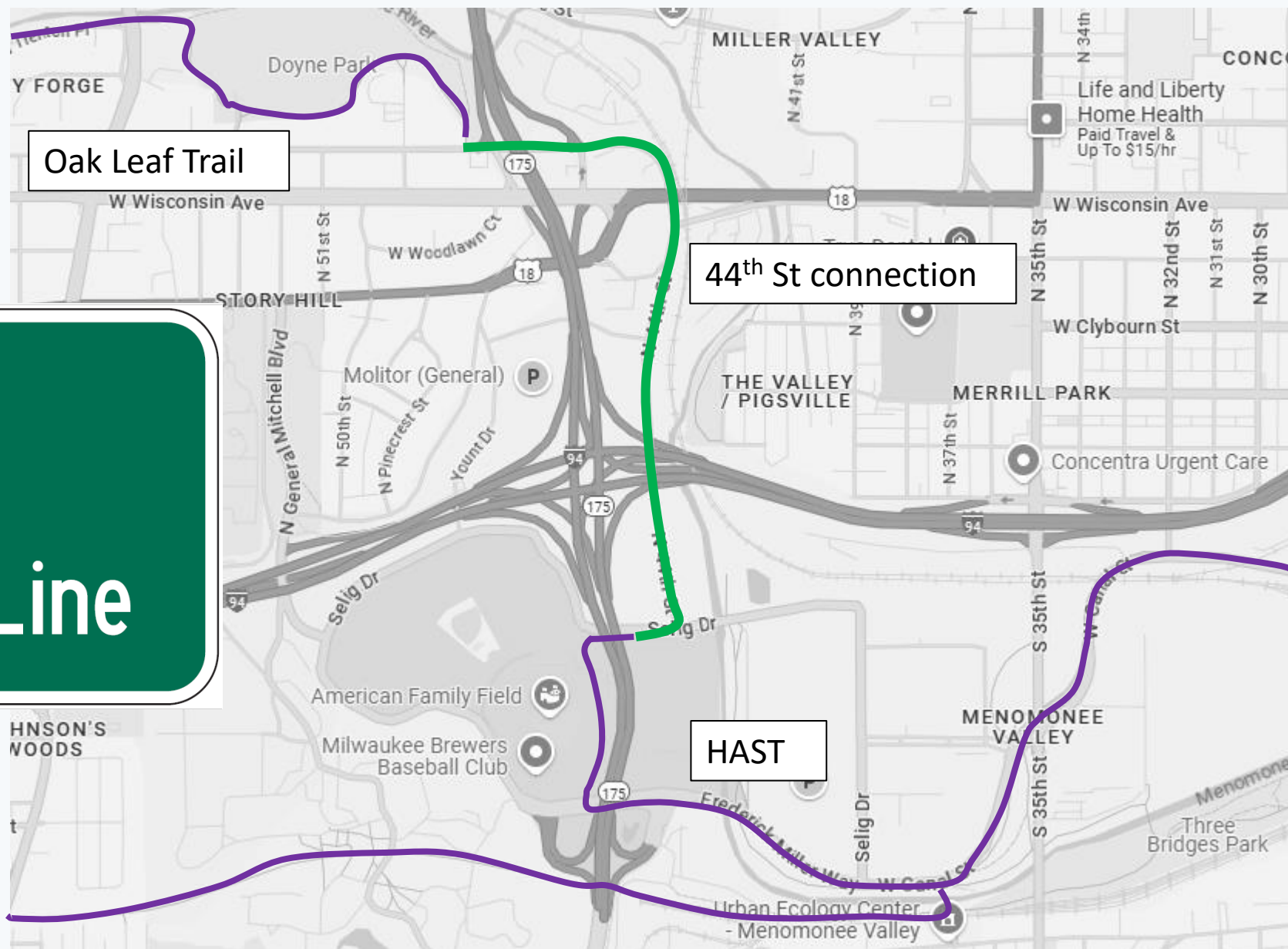
2027:

- National Ave 1st St to 11th St
- I-794 Milwaukee River to Car ferry Dr
- Wisconsin Ave, WIS 100 to I-41
- I-894 UPRR to Howard Ave
- I-894 92nd St Bridge

2028:

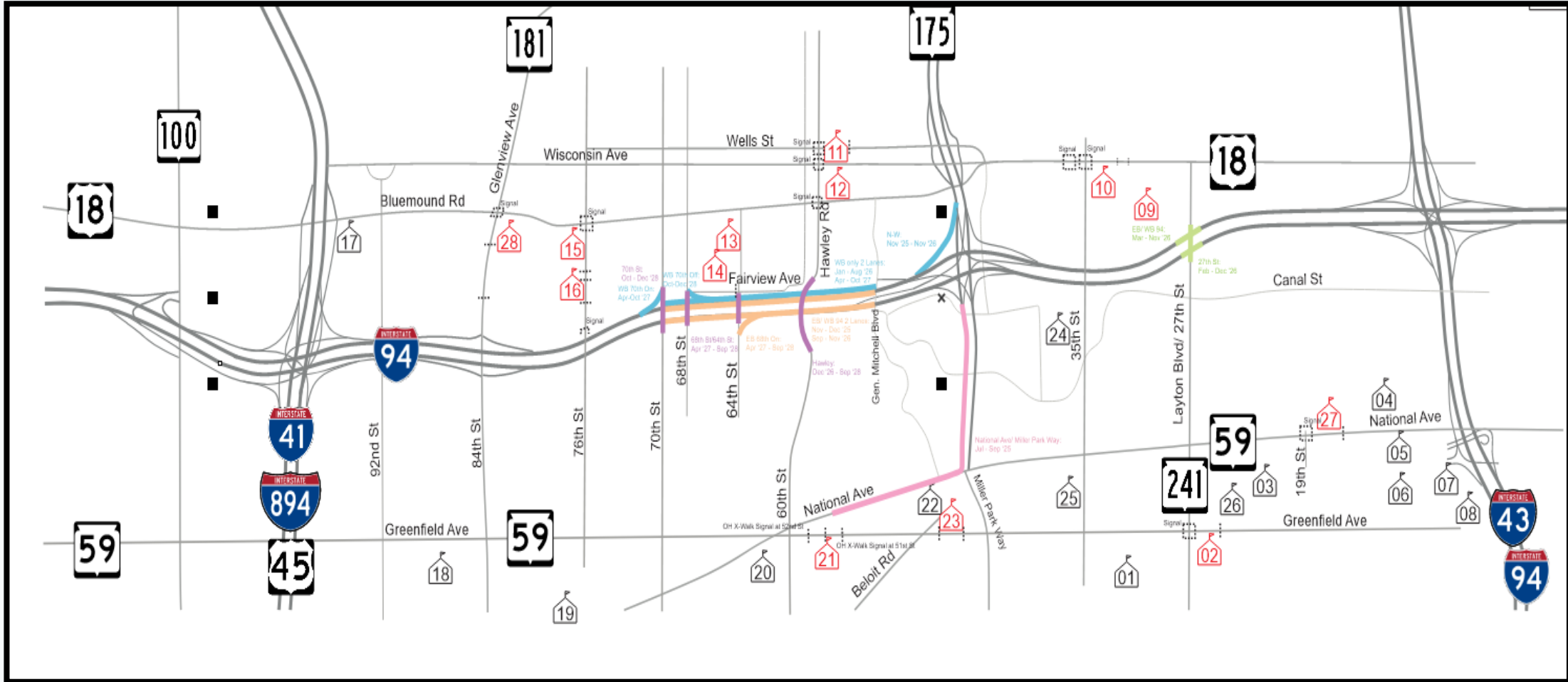
- National Ave 11th St to 27th St

| Bicycle/Pedestrian items

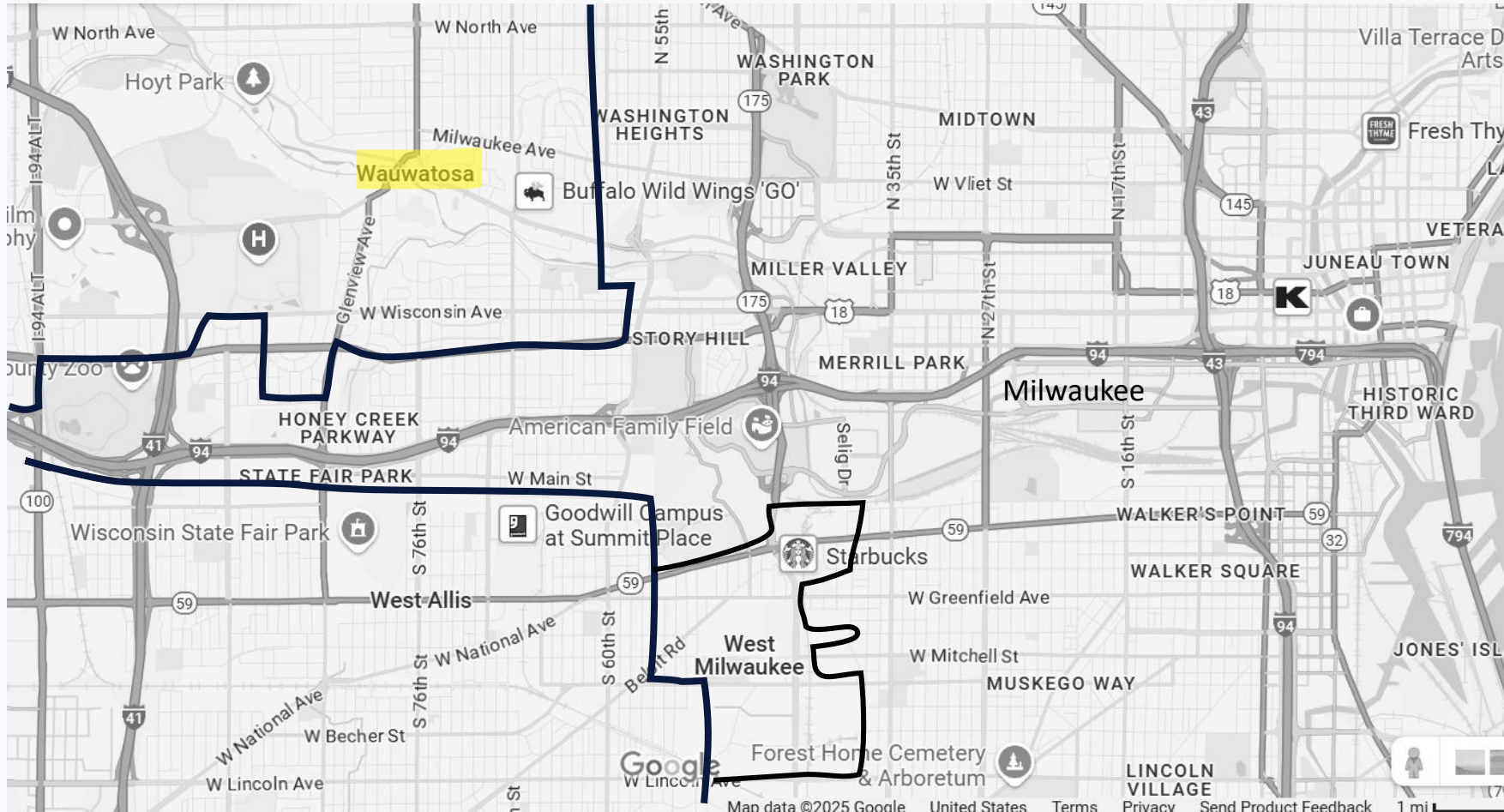


| School Coordination

Goal: enhance safety at schools along key alternate route



Traffic Signal items – City of Wauwatosa



- Strategy: Signal progression along Wisconsin Ave & Bluemound Rd
- Strategy Includes: Signal Timing Adjustments

| Wauwatosa Engineering Dept Requests

- 76th and Wisconsin Ave
 - Updated Traffic Signals
 - Updated Cabinet/Controller
 - NoTraffic Vehicle Detection
 - Pavement Marking
- Glenview (84th St) and Wisconsin
 - Updated Traffic Signals
 - NoTraffic Vehicle Detection
 - Pavement Marking
- State budget signed on July 3, 2025; much to be determined
 - Working through what is feasible with dollars allocated

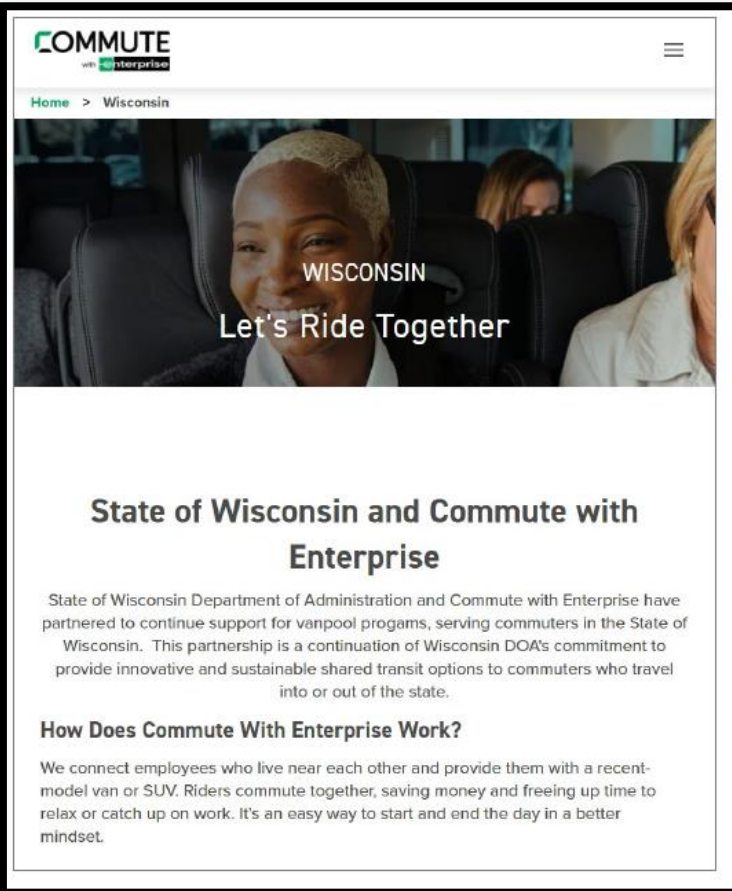
Travel demand and outreach



| Potential Employer Outreach Solutions

COMMUTE with Enterprise

Commute together to/from work with others that live and work near you



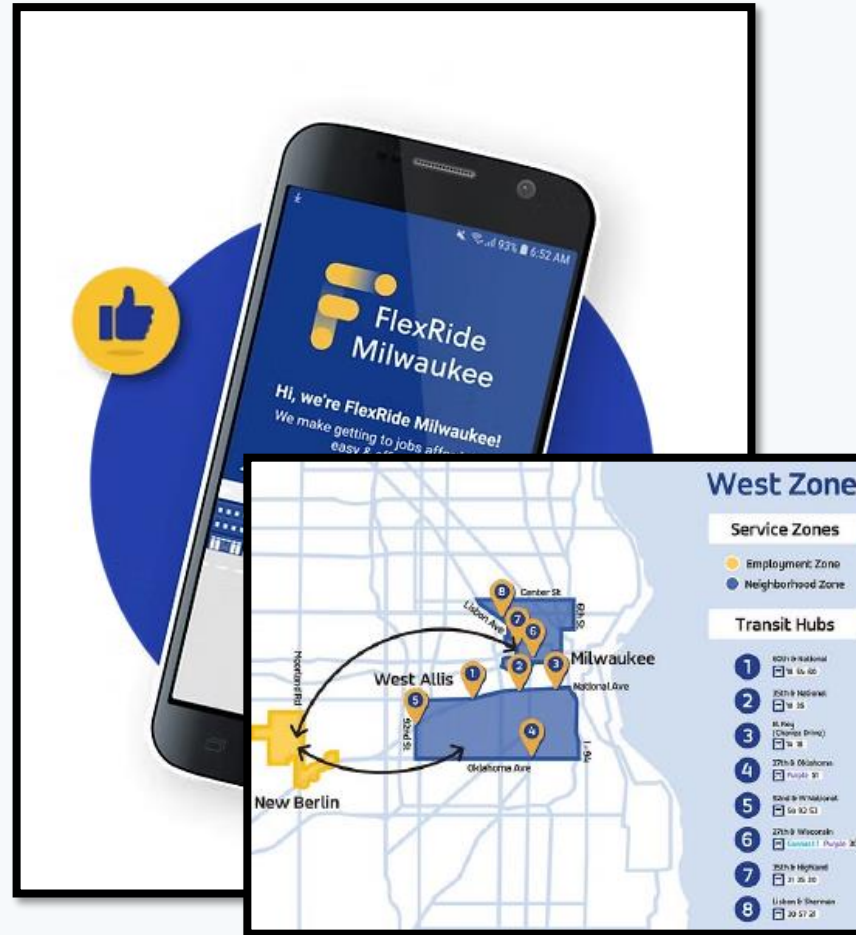
The screenshot shows the 'COMMUTE with Enterprise' website for Wisconsin. The header includes the logo and a navigation bar with 'Home > Wisconsin'. The main banner features a photo of three people in a car with the text 'WISCONSIN Let's Ride Together'. Below this, the title 'State of Wisconsin and Commute with Enterprise' is followed by a paragraph about the partnership. A section titled 'How Does Commute With Enterprise Work?' describes the service.

State of Wisconsin and Commute with Enterprise

State of Wisconsin Department of Administration and Commute with Enterprise have partnered to continue support for vanpool programs, serving commuters in the State of Wisconsin. This partnership is a continuation of Wisconsin DOA's commitment to provide innovative and sustainable shared transit options to commuters who travel into or out of the state.

How Does Commute With Enterprise Work?

We connect employees who live near each other and provide them with a recent-model van or SUV. Riders commute together, saving money and freeing up time to relax or catch up on work. It's an easy way to start and end the day in a better mindset.



FlexRide Milwaukee

Connecting employees to employer hubs in New Berlin, Oak Creek/Franklin, and Butler/Menomonee Falls at an affordable cost

Wisconsin RIDESHARE Program

Connect people with more commute solutions. Ride, drive, or bike



The advertisement features the text 'Find a better commute.' above icons for a bus, car, bicycle, and van. Below the icons is the text 'RIDESHARE etc.' and 'Connecting Wisconsin with a variety of commute options.' The background is a blurred image of a city street.

Find a better commute.

RIDESHARE etc.

Connecting Wisconsin with a variety of commute options.

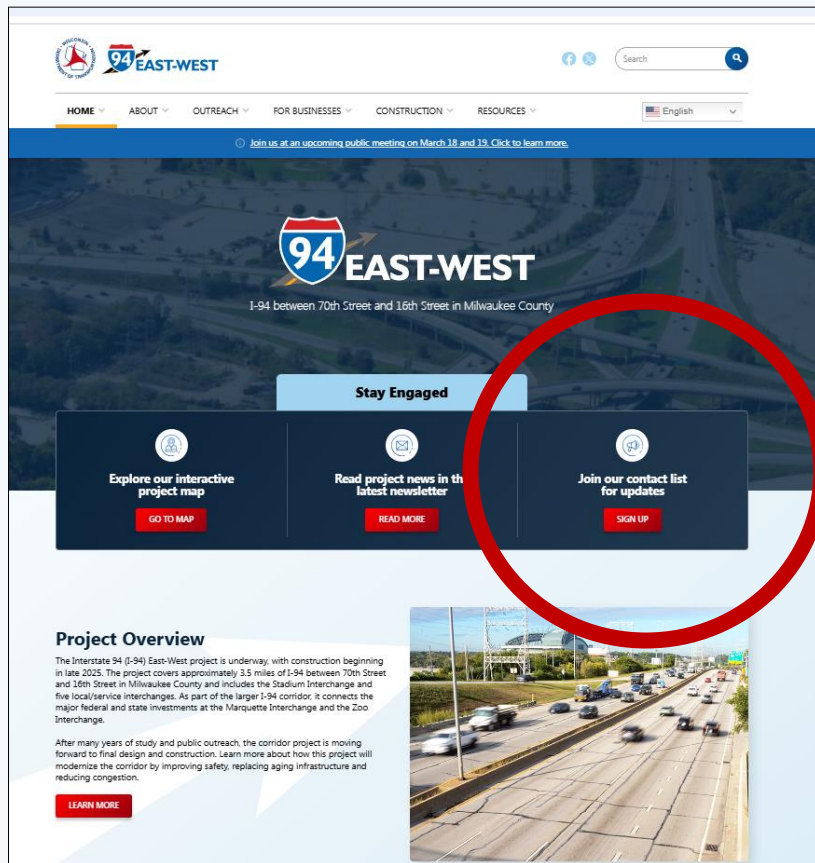
I Transit mitigation

- Transit construction mitigation –\$25-\$30 Million for transit
 - *NOTE: More than double the transit funding of previous WisDOT mega-projects*
- Where is transit funding going?
 - Maintain headways
 - Mitigation for closures (long-term bridge and roadway closures)
 - Temporary stops
 - Paratransit
 - Other



I How to stay up to date

- **Project website:** 94eastwest.wisconsindot.gov
- Sign up for updates



- Business resources available

Temporary Signage Guide

When to Use Temporary Business Signage

Temporary signs can help customers navigate a construction zone to find your business. Below you will learn how to apply for temporary business signs through WisDOT. Please note that WisDOT's temporary signage policy applies only to work in the state highway system, and **business owners are responsible for the cost**. Temporary signage in local streets projects would be managed by the local governing body and may differ from state policy.

When might you need temporary business signage? If your business is located within or adjacent to a construction zone, or nearby construction will alter a main route to your business, you may want to make temporary signage as part of your plan to keep in touch with customers. Other items to consider include:

- Traffic detours
- Changes to driveway access
- Duration of construction
- Peak business season
- Signage versus other outreach options (social media, word of mouth, etc)



This guide will help you understand how and when to coordinate temporary business signage with WisDOT and the construction team.

Before Construction

- **Coordinate sign location(s) with the project engineer**
 - ▶ About two months before construction, coordinate with the Project Engineer to determine sign location(s).
 - ▶ Consider working with other nearby businesses to apply for temporary business signing. Multiple businesses can put their name and logo on the same sign. Or, ask about a general message sign "Access to Main Street Businesses."
 - » If the project includes a detour, additional temporary business signage may be useful along the route.

DESIGN GUIDELINES:

		A	A	LOGO
		4" Lettering	6" Lettering	
Individual Business Sign 3' x 3' maximum size	Multiple Businesses Sign 4' x 8' maximum size	For roads 45 MPH Speed Limit or Less	For roads 45 MPH Speed Limit or More	Logos cannot exceed 4 sq. feet on your sign

Key points to discuss

- ▶ How will customers access my business during construction? Consider signs at beginning points of construction or side streets that customers might use.
- ▶ Will construction disrupt customer parking?

Design your sign!

- **Fill out the application**
 - ▶ Include an illustration with dimensions and a map for placement.
 - ▶ Work with the project team to establish a point of contact.
 - » Once you are approved, purchase the signs to be ready for construction!
 - ▶ Work with the project team on any question you may have.
 - ▶ Check in with the team prior to placement.
 - ▶ Rely on the project team's expertise on visibility and safety.
 - ▶ **After construction, all signs must be removed within 48 hours.**
 - ▶ Check in with the project team prior to removal.
 - ▶ Let customers know that access is back to normal!



Questions/Discussion

