



Wauwatosa Police Department: 2025 Annual Report

Presentation to the Wauwatosa Common Council

Tuesday, May 19, 2026

Policing in Wauwatosa

- 49,000+ residents
 - 14th largest city in Wisconsin by population
- The rich retail, commercial, medical, and educational services cause the population to more than double during the day
 - **4th largest city by daytime population**
- Our police department remains adaptable and diverse to meet the unique public safety needs of the community



Strategic 3 Year Plan

Focus on Six Key Areas of Organizational Improvement:

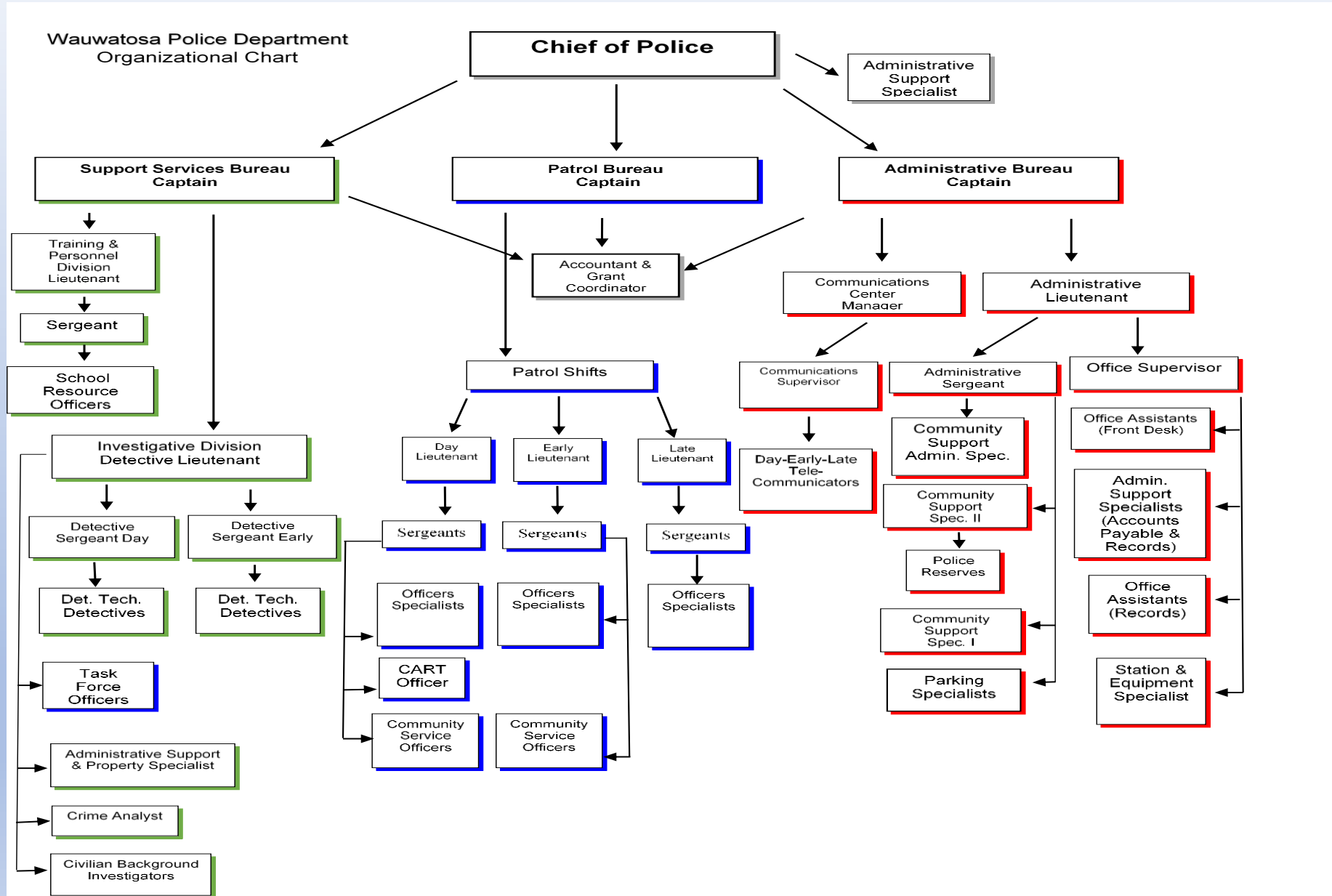
- Community Service
- Organizational Efficiencies
- Technology Enhancements
- Employee Engagement
- Fiscal Resiliency
- Facilities Upgrades



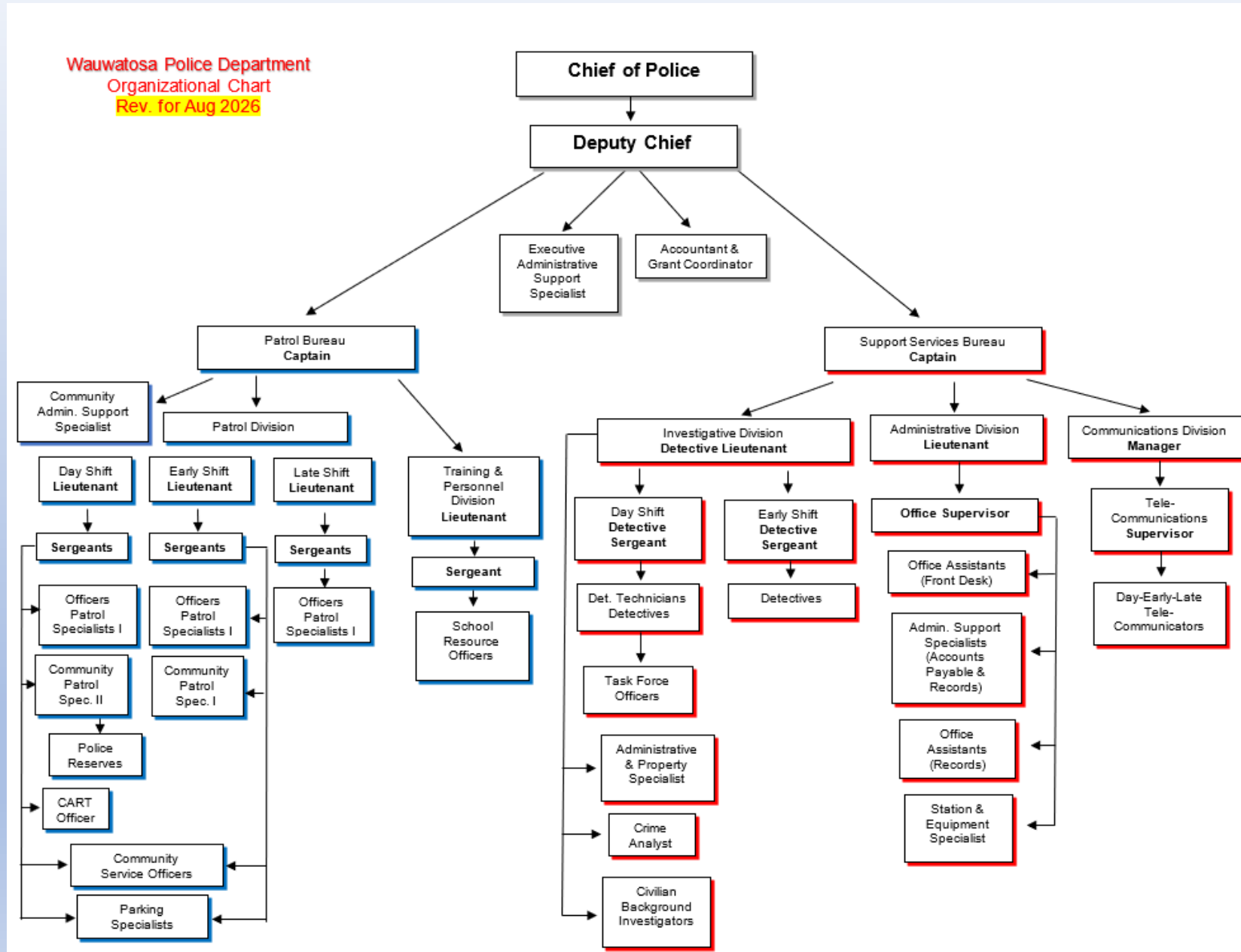
Organizational Structure

- Three Bureaus (currently):
 - Patrol
 - Administrative
 - Support Services
- Every bureau has divisions, each with unique responsibilities
- Will change in the end of July, 2026:
 - Patrol
 - Support Services

Organizational Structure (current)



Organizational Structure (end of July)



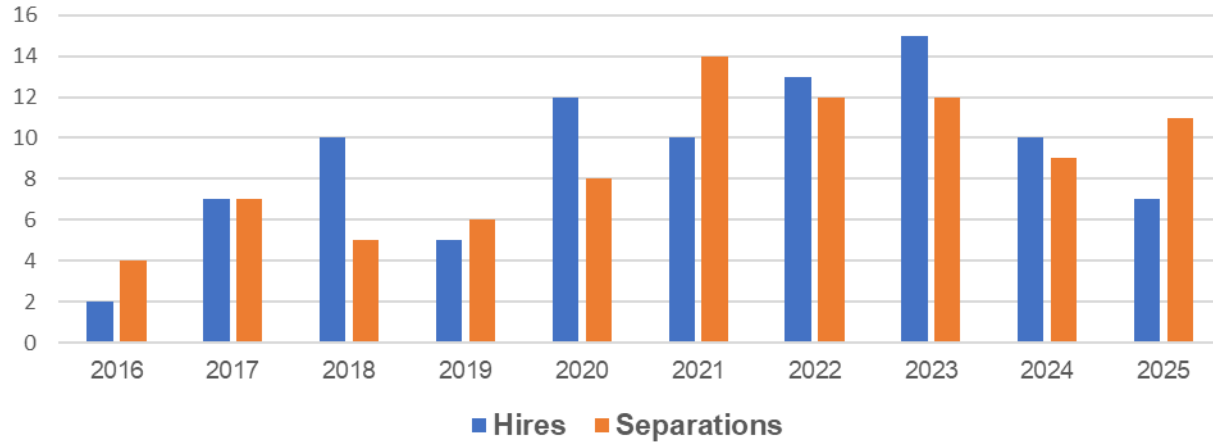
Personnel & Staffing

- Sworn Staff: 86 (currently)
 - Authorized for 100
 - **14 vacancies**
- Non-Sworn Staff: 34
 - Communications
 - Clerical
 - CSO's
 - Parking Specialists



Sworn Personnel: Hires & Separations

Hires and Separations by Year



RETIREMENTS AND RESIGNATIONS BY YEAR



Crime Data Snapshots

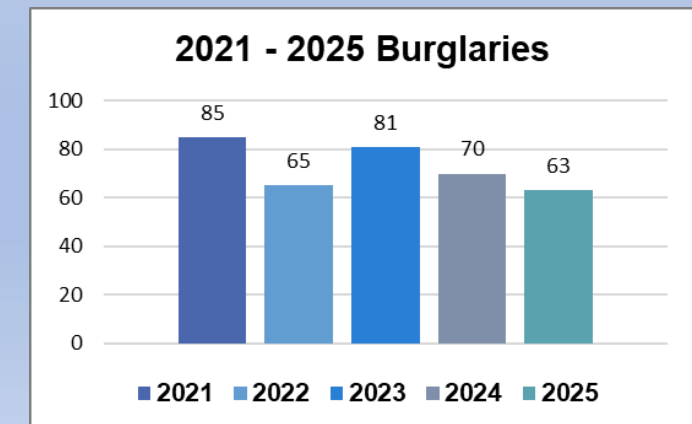
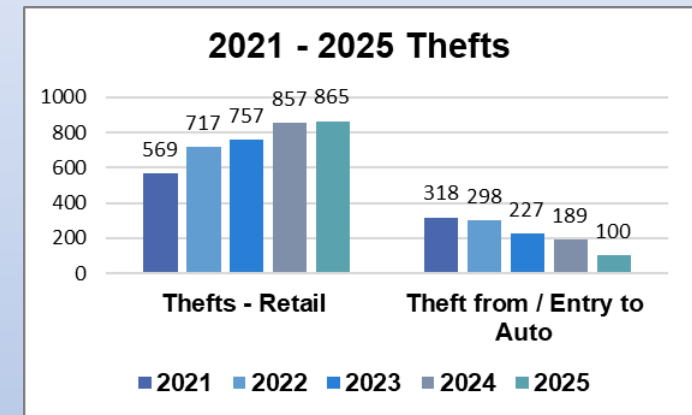
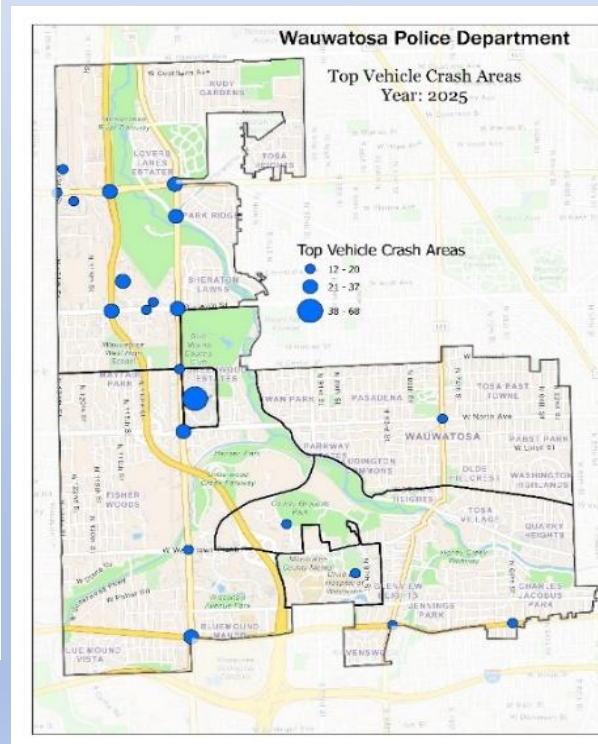
Nat'l Incident Based Reporting System (NIBRS)

	2022	2023	2024	2025
Calls for Service	30,065	34,944	39,476	36,729
Offenses	2,978	3,053	3,248	2,964
Group A	2,221	2,174	2,272	2,027
Group B	757	879	976	937
Arrests	1,403	1,677	1,789	1,710
Group A	744	908	940	885
Group B	659	769	849	825
Crashes	1,081	887	832	1,024
Fatal	5	1	1	-
Hit & Run	201	105	93	105
Personal Injury	142	176	182	179
Property Damage Only	733	605	556	740
Citations				
Traffic	2,991	4,700	4,534	4,544
Parking	7,096	9,682	12,383	11,526

Group A = Assault, burglary, narcotics, robbery, etc.

Group B = Disorderly conduct, OWI, trespassing, etc.

Crash Areas, Burglaries, & Thefts



Patrol Bureau

- Provides 24/7 service and is the forefront of the community's public safety needs. 36,729 Police calls for service in 2025
- Consistent support from the City Administration & City Council has allowed for continuous evolution and technology.
 - License plate readers
 - Facial recognition
 - Social workers
 - Online form submissions
 - Community Service Officers
 - Drones
- Hot-spot policing initiatives proven effective: Additional grant-funded research coming in the future.

Administrative Bureau

- Communications Division provides 24/7 service for reports of public safety matters. 36,729 Police calls for service & 10,758 Fire calls
- Office personnel provides support for records management, crime reporting, records requests, and customer service.
- Community Support personnel provided our School Resource Officers and Community Support Officers in 2025.
- Leadership oversees the department's budget, facility-related matters, and the department's fleet of 60+ vehicles.

Support Services Bureau

- Investigative Division
 - Conducts criminal investigations.
 - In addition to General Crimes, specialization in:
 - Internet Crimes Against Children (ICAC)
 - Financial Crimes
- Training & Personnel Division
 - Facilitates hiring of sworn employees.
 - Coordinates both internal and external training for all department personnel.
- Milwaukee Regional Medical Center (MRMC) Policing
 - Serves as the primary point of oversight for the enhanced police services contracts with MRMC partners.

Armored Rescue Vehicle

- Delivered in May of 2024
- Available for use in high-risk situations to enhance both officer and community safety.
 - Provides protection for personnel while they work to stabilize dangerous incidents.
- High water rescue application in 2025



Crisis and Assessment Response Team (CART)

- Two-Person Team: Police Officer Jeremy Saffold & Licensed Professional Counselor Patrice Moore, LPC
- Specialized training to respond to incidents involving individuals experiencing mental health crises.
- 2025 CART Call data
 - 235 calls – minor level of force used in only 1 incident
 - 16 ED's (goal is to lessen these)
 - Over 40 ongoing follow-up cases managed
 - Numerous presentations to community partners



Drone Unit

- Calls responded to:
 - 30 total missions
 - Assisted 9 other agencies
 - Assisted the arrest of 5 suspects
- How it's used: searching for suspects, heat signature searches, missing people, mapping scenes
 - Reduces significant risk to officers and community members

In Progress...

- Project management process (Strategic Plan)
- Community mental health support (Council Request)
- Wauwatosa Police Foundation (Strategic Plan)
- Hours of work (Employee Support)
- Retention and Recruitment (Strategic Plan and Highest Priority)



Thank You

