



EXECUTIVE SUMMARY

- (1) Monument Sign
- (2) Wall Signs 24"

PROJECT CONTACTS

ARCHITECT: TAP
CHASE DESIGNER: JIN BYUN
SIGN CO: SIGNTECH - TRACEY L PICHIERRI

REVISION NOTES

Sales: Art Navarro
Coordinator: Tracey L Pichierri
Design: ASena
Engineering:

Date: : 07/27/23
Drawing: 23-01329
Quote:
Project ID: CHASE_48100R001319_1

 **Signtech**
4444 Federal Blvd San Diego, CA 92102
(619) 527-6100 signtech.com

Code Allowances - Completed by Sign Vendor	
General Info	
Zoning Designation, Planner name, phone number, email address	M1 Light Industrial, PUD, City of Wauwatosa, WI. Tammy Szudy, Principal Planner 414-479-3521, tszudy@wauwatosa.net
Temporary Signs	
Is the 8' x 4' Coming Soon Ground Sign Allowed? If so, how many?	NTE 32 sf in area and 8' in height. Permit is required and sign shall be set back 5' from the front or side lot. 1 sign permitted per street frontage; may be single or double-faced; may be freestanding.
Are temporary banners allowed? If so, for how long?	NTE 32sf in area. Not more than 1 banner per street frontage, 30 days max, 4x / calendar year with 30 days between events.
Primary Ground Sign	
Will code allow our standard pylon or monument? If yes, which one (ex: P-100, P-75, M-50, M-25, refer to reference guide for all standard options). Is more than 1 primary ground sign allowed?	M-25
If not, what are the pylon / monument restrictions? (include illumination restrictions/overall allowable sf / custom design requirements)	N/A
List the set back requirements.	
Wall Signs	
Prototypical FS branch - Will code allow our standard illuminated bldg. sign package (30" letterset on front & sides, 24" letterset on the rear)? Please list size and locations of signs allowed.	No
If not, what are the variables/restrictions (include illumination and sf restrictions, as well as custom sign requirements)?	N & S elevations LIF-WBO-24
In-line / Urban branch - what are the exterior wall sign restrictions (sign type, including max. sf and illumination).	N/A
Interior Window Signs- List all interior window signs restrictions, including storefront set back requirements.	Not to exceed 20% net window area. Setback not addressed in code.
ATM Topper- does this count against our overall allowable sf.? Is illumination allowed?	Counts against overall signage allowed.
Are decorative logos allowed (EFIS octagon)? Does it count against overall SF?	Yes, in lieu of illuminated signage
Are entrance wall plaques allowed (CPC plaque)?	submit for review
Directional / Regulatory Signs	
Is our standard directional and regulatory sign package allowed?	Copy and logo not allowed. Permits not required. D5
If not, what are the variables/restrictions?	N/A
Awnings / ATM Sunscreens	
Are branded awnings allowed?	Yes, in lieu of illuminated signage
What if any restrictions are there (Illumination, color/materials, min & max projection)?	illumination allowed.
Are ATM sunscreens allowed? Do they count against overall SF?	Yes, the octagon will count as signage
Is a signature canopy allowed? What are the restrictions if any?	Yes., copy/octagon will count towards signage allowed.
Other Governing Agencies	
Identify other governing agencies that could override code (ARB, HRB, PUD, etc) and list the known restrictions.	Design Review Board
Permitting / Variance Process	
What is the application process and timing for variance approval ? What are the variance application fees?	30-45 days
What is the likelihood of being granted a variance with this municipality?	The board must find that, but for the grant of a variance, the applicant will experience a hardship. The hardship cannot have been created by the applicant. To establish a hardship the board must find that the applicant can make no reasonable use of the subject property without a variance. Hardship does not exist for this site.
Architectural Lighting	
Is Architectural lighting allowed? Does it count against overall SF? List provisions.	submit for review
Additional Comments	
Please list any additional comments	The design review board shall review the aesthetics of all structurally modified new monument and freestanding signs. Freestanding/monument permanent signs must be submitted to the DRB. The DRB meets at 7pm on the first and third Thursday of each month at City Hall. Attendance at the meeting is required.



CHASE

Wauwatosa

11199 W. Burleigh St., Wauwatosa, WI 53222

DATE	DESIGNER	AREA	SCALE
03/15/2023	JB	+/- 0.54 AC	

0 10' 30' 60'

EXTERIOR SCOPE OF WORK					
SIGN ID	ELEVATION	SIGN TYPE	DESCRIPTION	SQFT	ADDITIONAL APPROVAL (Y/N)
G01	- -	M-25-RE-STONE	Double-Faced Illuminated Monument W/ Stone Base	25	- -
B01	WEST	LIF-WBO-24	24" White Channel Letters and Logo	36.9	- -
B02	NORTH	LIF-WBO-24	24" White Channel Letters and Logo	36.9	- -
A01	- -	HB-U-R	Headache Bar - Right	- -	- -
A02	- -	CAN-ATM-SIG-OCT	ATM Signature Canopy w/ Octagon	- -	- -
D01	- -	D-5-RE	Non-Illuminated Directional Sign	- -	- -
D02	- -	D-5-RE	Non-Illuminated Directional Sign	- -	- -
S01	- -	TC-P-ADA-WI-V-RE	Post Mount Handicap Stall Sign - Van Accessible	- -	- -
S02	- -	TC-P-ADA-WI-RE	Post Mount Handicap Stall Sign	- -	- -
S03	- -	TC-P-DNE-DOT-RE	Post Mount - Do Not Enter Sign - DOT Standard	- -	- -
T01	- -	CHA-TEMP-CS-48X96-SKID	Temporary Construction Site Banner - Sand Bags	- -	- -

PROPERTY LINE

ELEVATION/MATERIALS - ALLOWABLE
SCALE: 3/32' = 1'-0"



STORE FRONT
COLOR: BLACK ANODIZED
ALUM.



CLEAR GLASS



CAST STONE
COLOR: LIMESTONE
CORONADO



METAL CANOPY & SUNSHADES
COLOR: BLACK ANODIZED
ALUM.



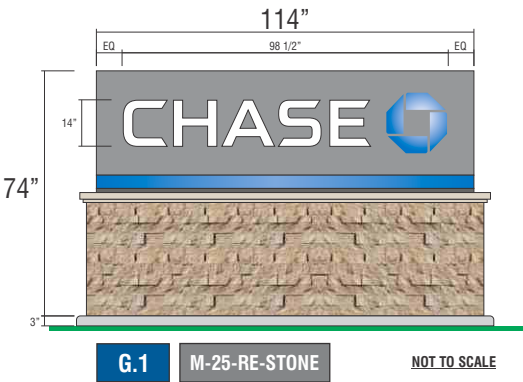
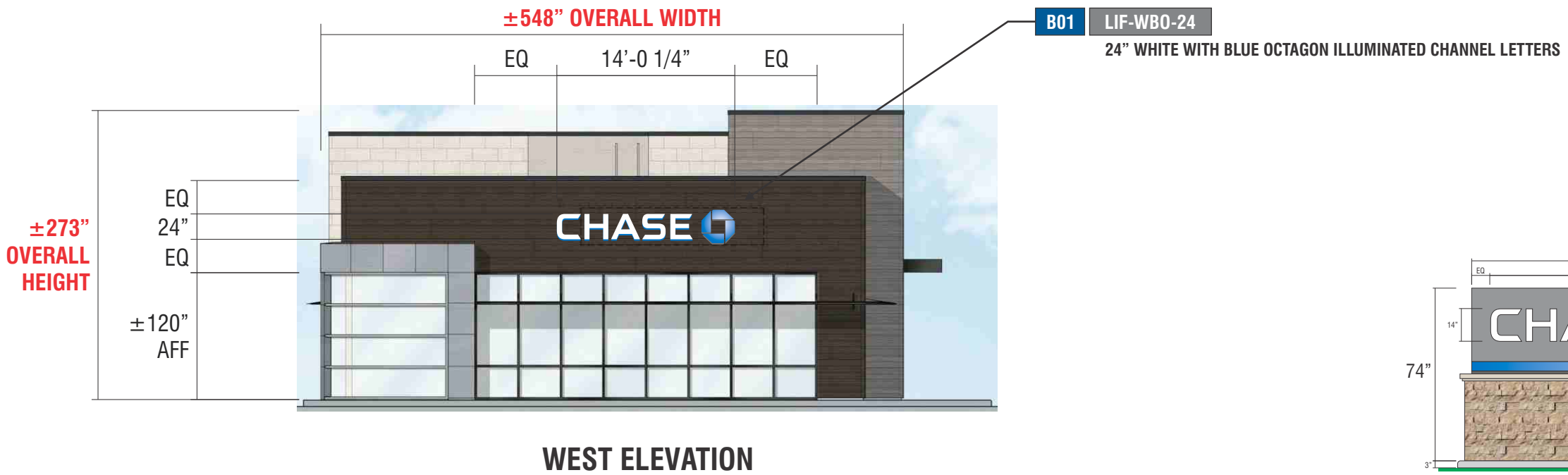
FIBER CEMENT
COLOR: ASH
NICHIA



FIBER CEMENT
COLOR: BARK
NICHIA



ACM
COLOR: CLEAR



ELEVATION/MATERIALS - ALLOWABLE
SCALE: 3/32' = 1'-0"



STORE FRONT
COLOR: BLACK ANODIZED ALUM.



CLEAR GLASS



CAST STONE
COLOR: LIMESTONE CORONADO



METAL CANOPY & SUNSHADES
COLOR: BLACK ANODIZED ALUM.



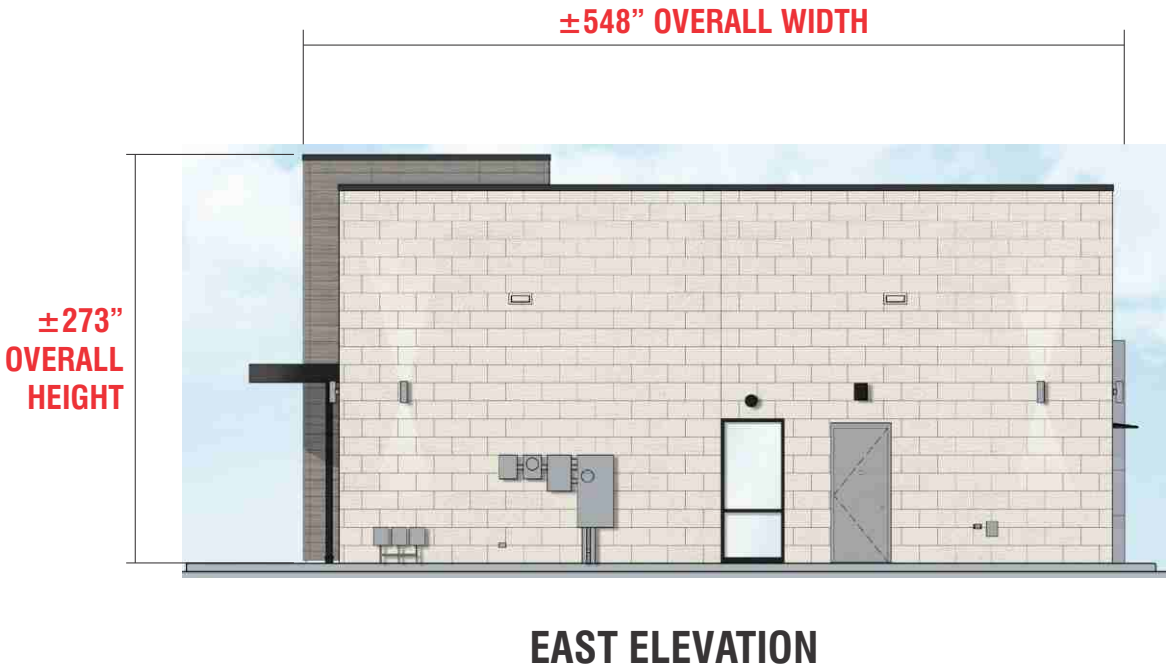
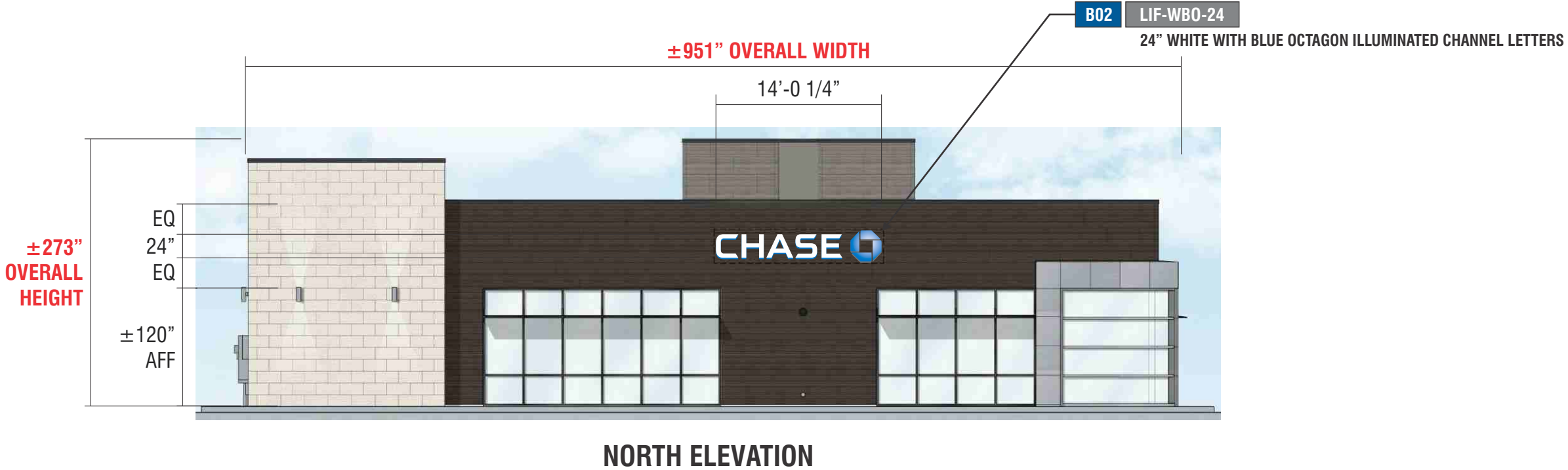
FIBER CEMENT
COLOR: ASH NICHIIHA



FIBER CEMENT
COLOR: BARK NICHIIHA



ACM
COLOR: CLEAR



EXISTING CONDITIONS

PHOTO 1



PHOTO 2



PHOTO 3



PHOTO 4



PHOTO 5



PHOTO 6



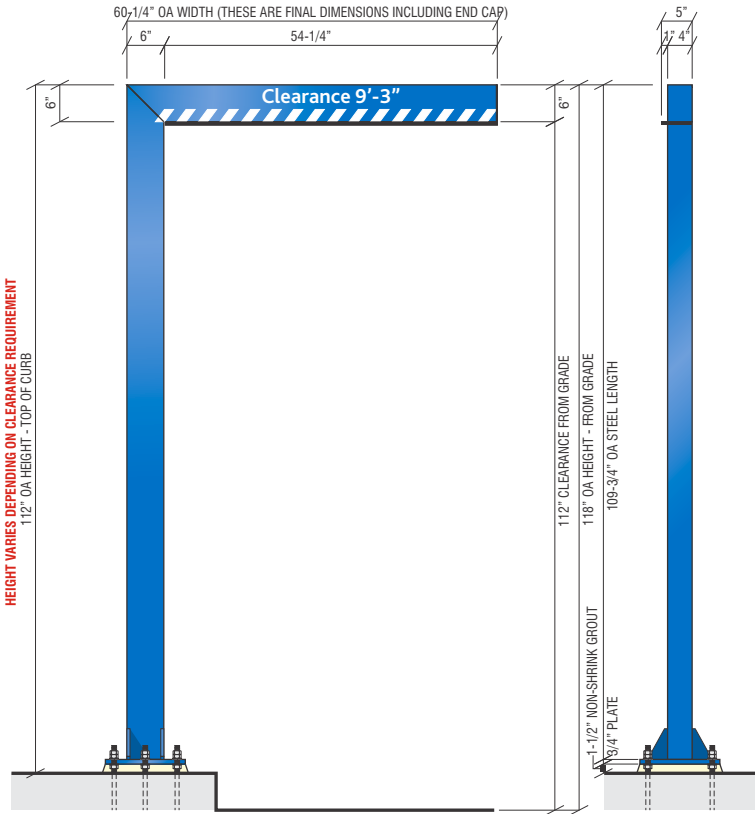
PHOTO 7



PHOTO 8

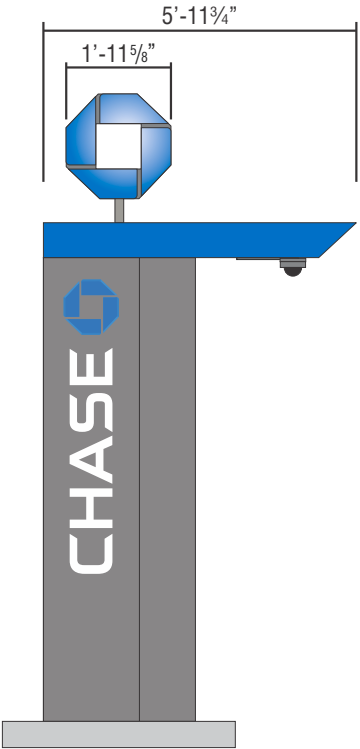


ATM SIGNS



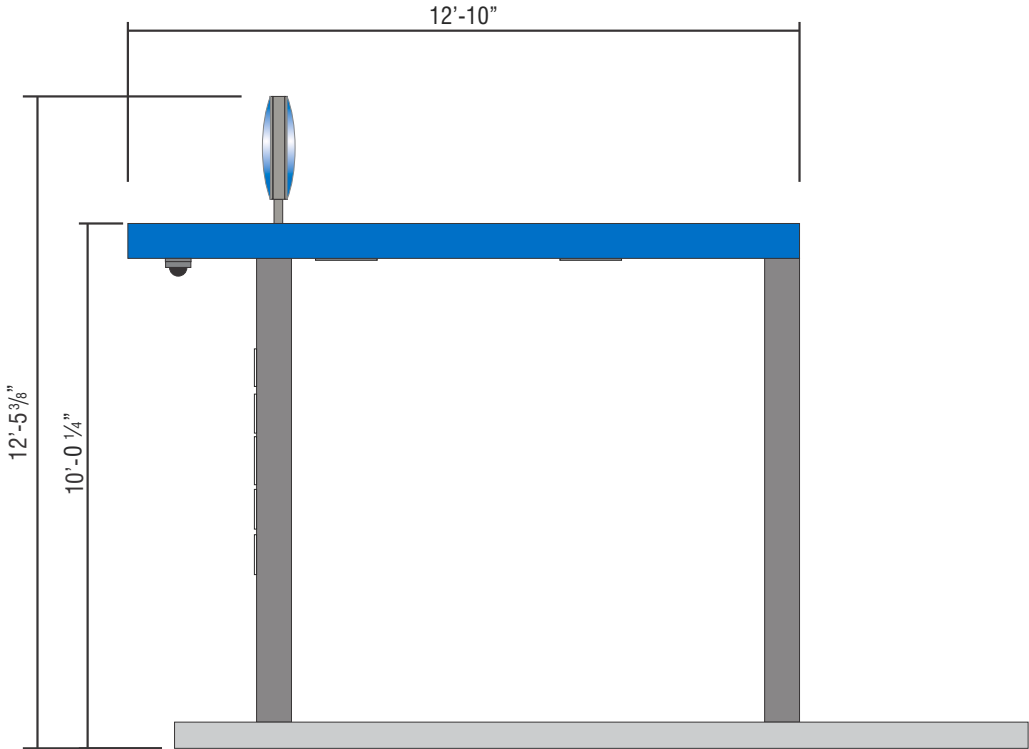
A01

SIGN TYPE HB-U-R

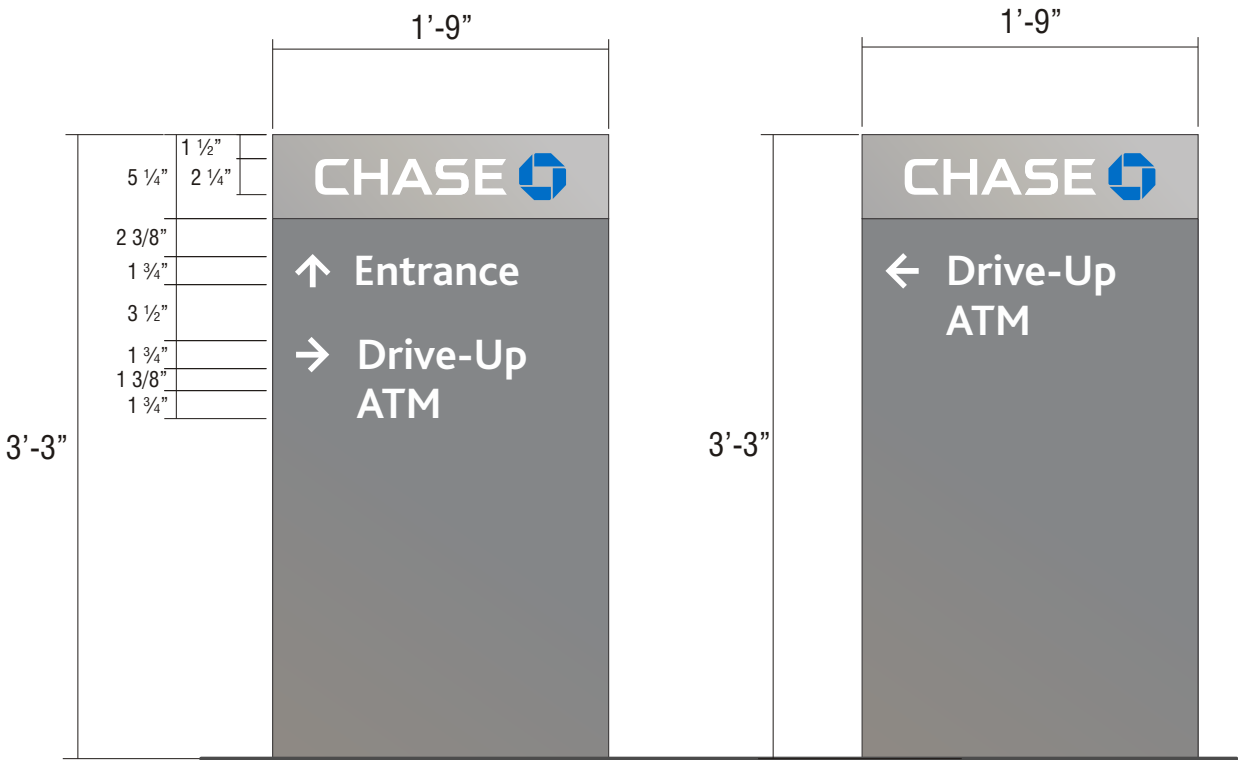


A02

SIGN TYPE CAN-ATM-SIG-OCT

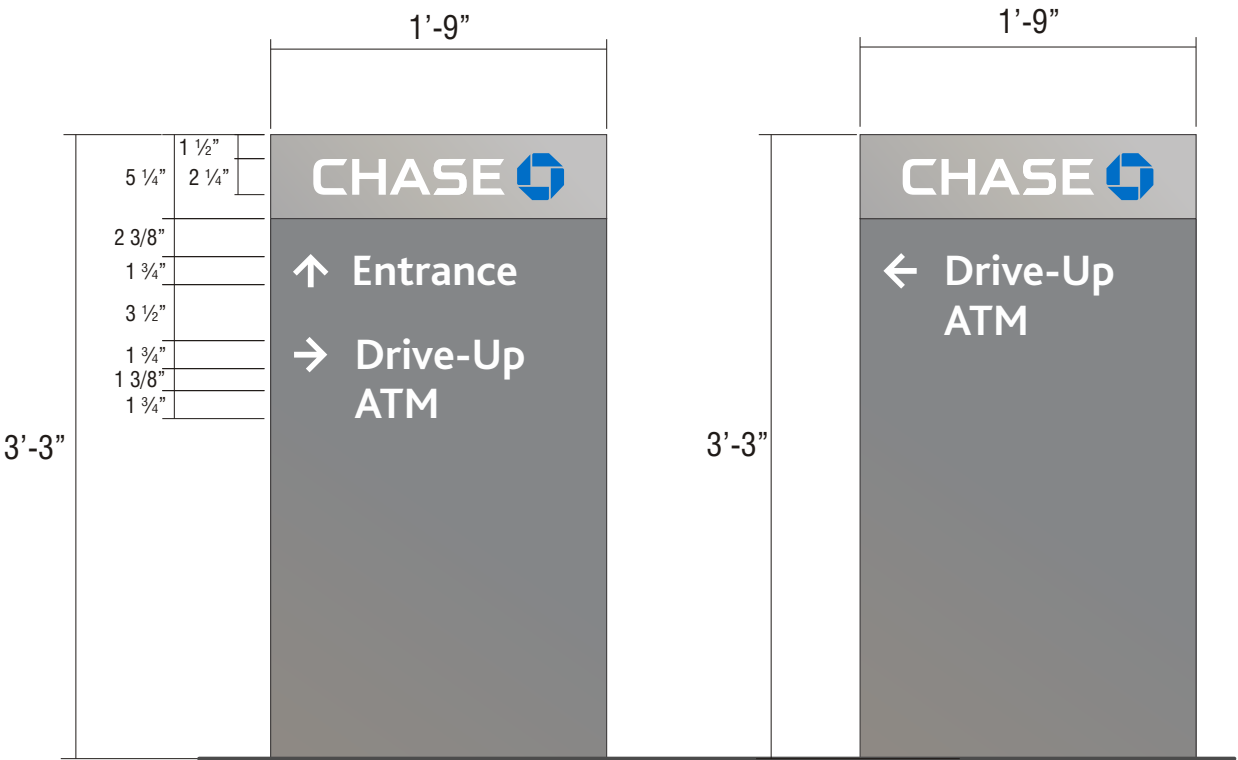


DIRECTIONAL EXTERIOR SIGNS



D01

SIGN TYPE D-5-RE



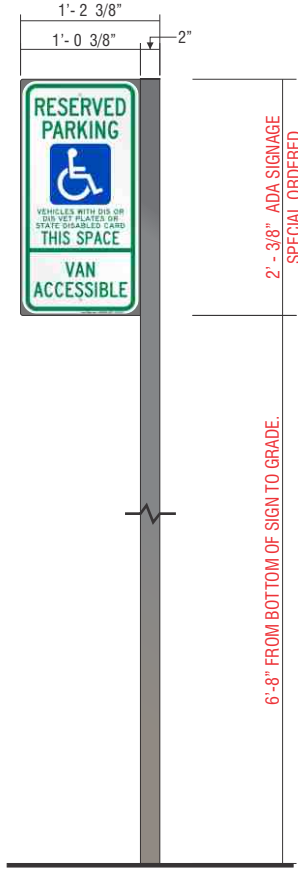
D02

SIGN TYPE D-5-RE

SECONDARY EXTERIOR SIGNS

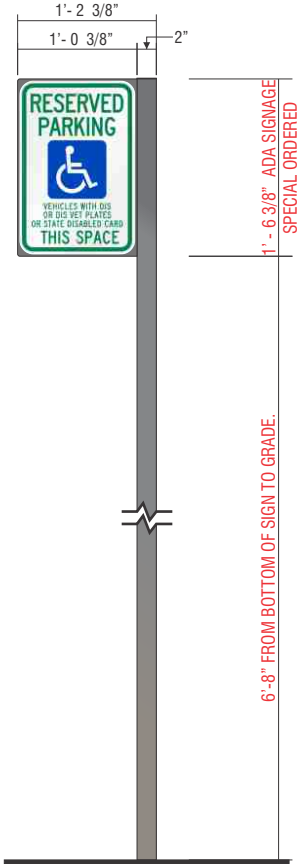
S01

SIGN TYPE TC-P-ADA-WI-V-RE



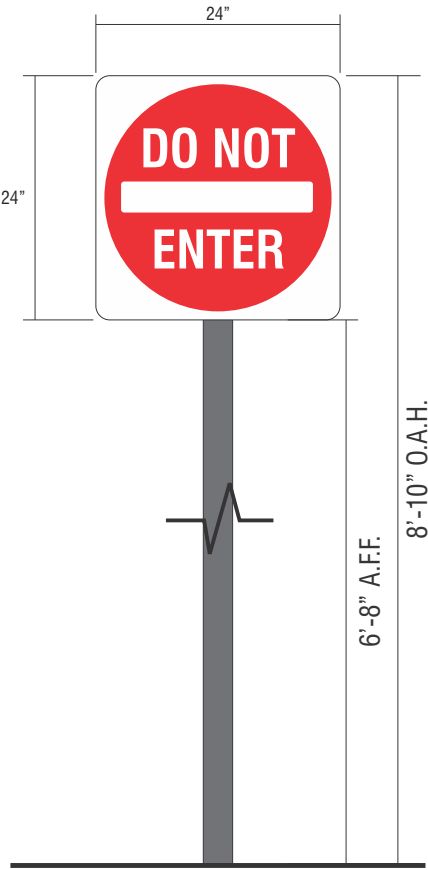
S02

SIGN TYPE TC-P-ADA-WI-RE



S03

SIGN TYPE TC-P-DNE-DOT-RE



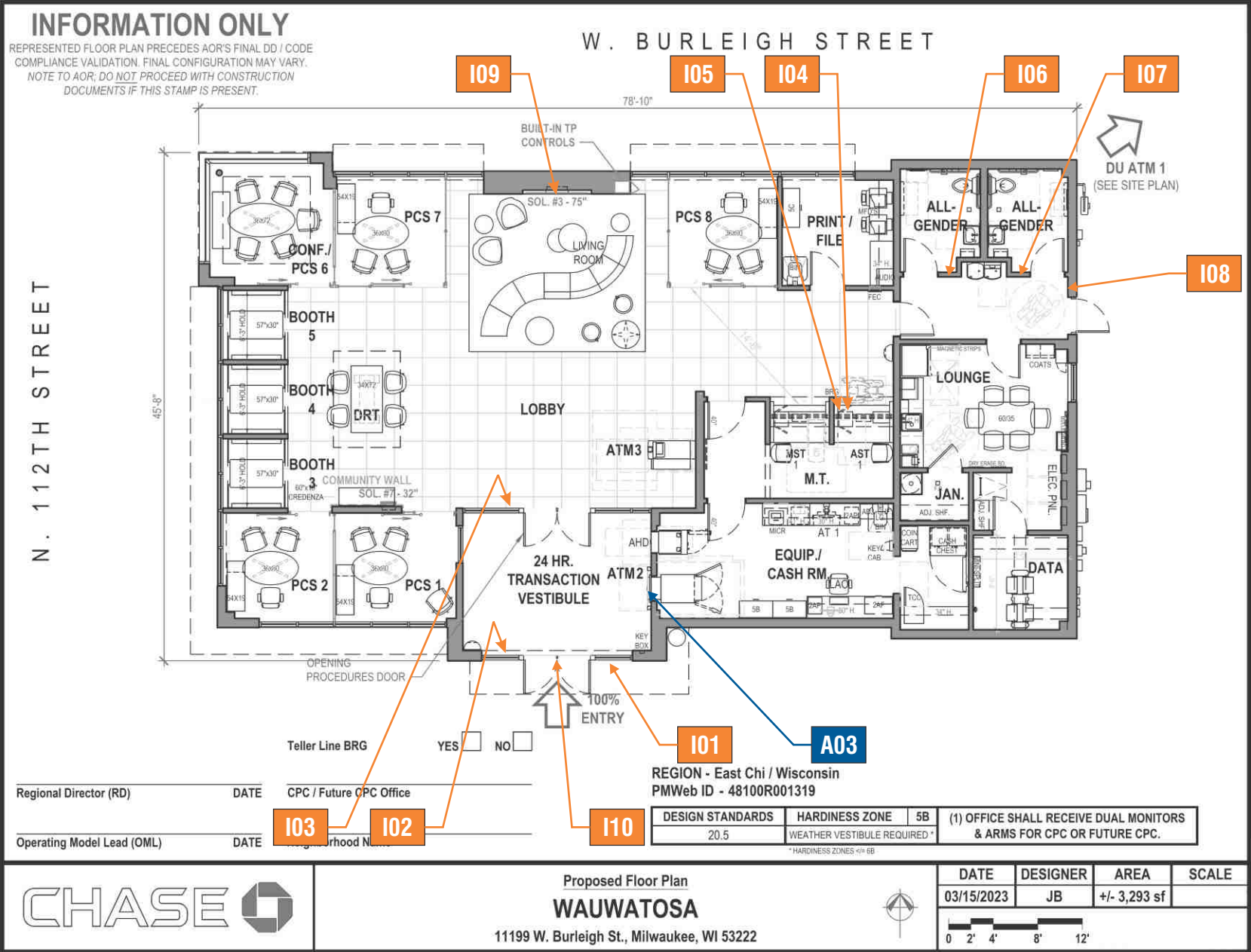
TEMPORARY SIGNS - APPROVED



T01

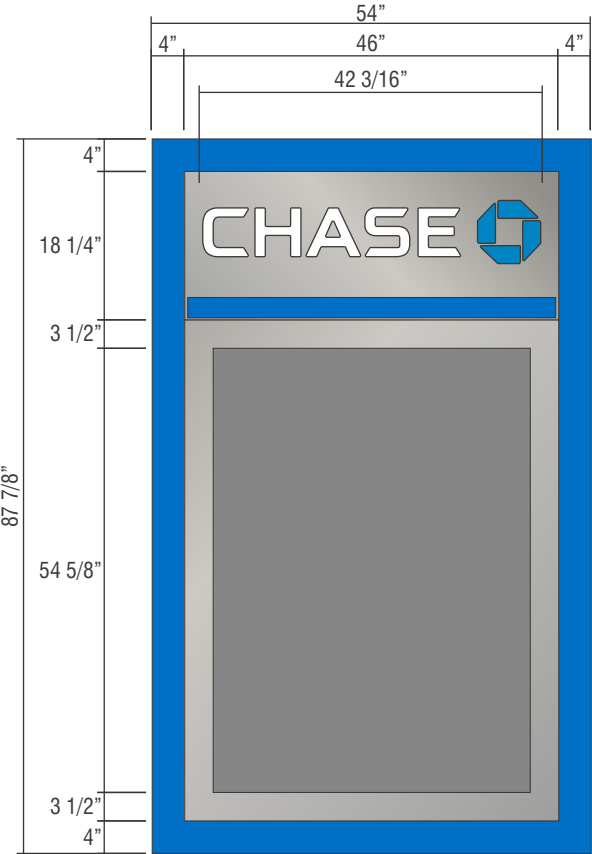
SIGN TYPE CHA-TEMP-CS-48X96-SKID

FLOOR PLAN
SCALE: 1' = 13'-0"



INTERIOR SCOPE OF WORK			
SIGN ID	SIGN TYPE	DESCRIPTION	QTY
A03	SUR-TTW-U-4-TP	Universal Thin-Profile ATM Surround	--
I01	ADA-EP	ADA Accessible Entrance Plaque W/ Vinyl Back	--
I02-3	ADA-EX	ADA Exit Plaque W/ Vinyl Back	2
I04	ADA-TW	ADA Accessible Teller Window Plaque	--
I05	ADA-TW-ALS	ADA Assisted Listening System Plaque	--
I06-7	ADA-RRAG-A-G	ADA Accessible All-Gender Restroom Plaque	2
I08	ADA-EEX	ADA Emergency Exit Plaque	--
I09	OCT-24-INT	Illuminated Blue Bitro Interior Octagon	--
I10	CHA-VYL-10X56	Transom Window Vinyl	--

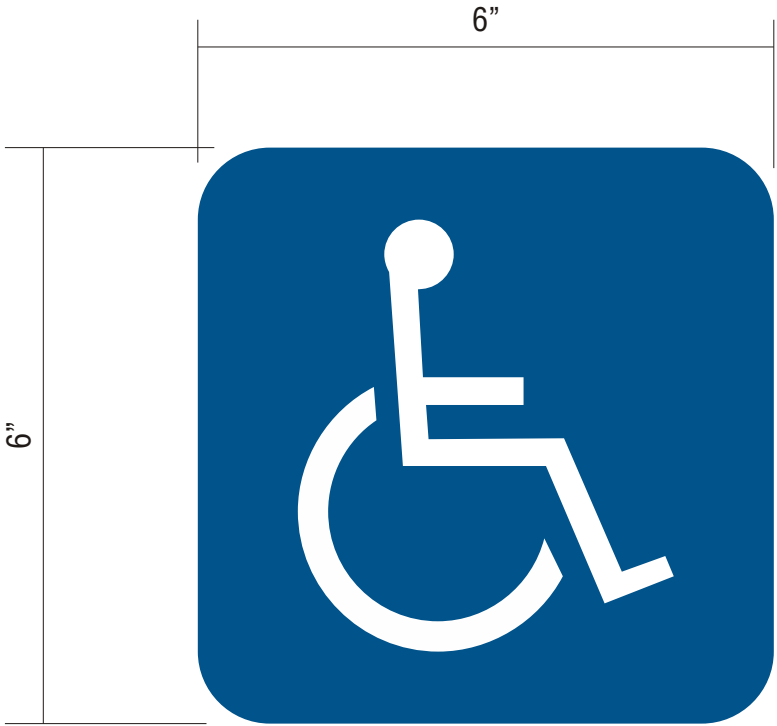
INTERIOR SIGNS



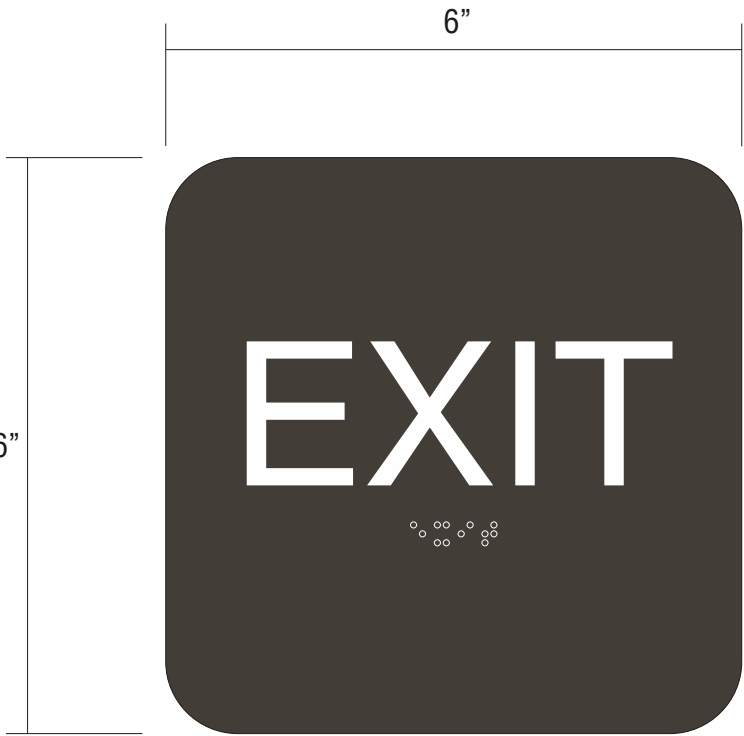
A03

SIGN TYPE SUR-TTW-U-4-TP

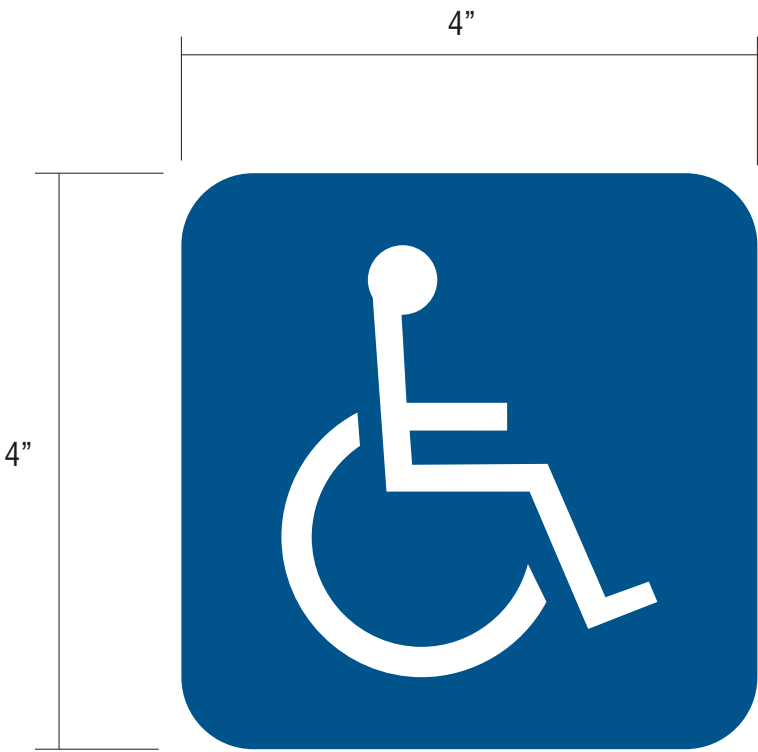
INTERIOR SIGNS



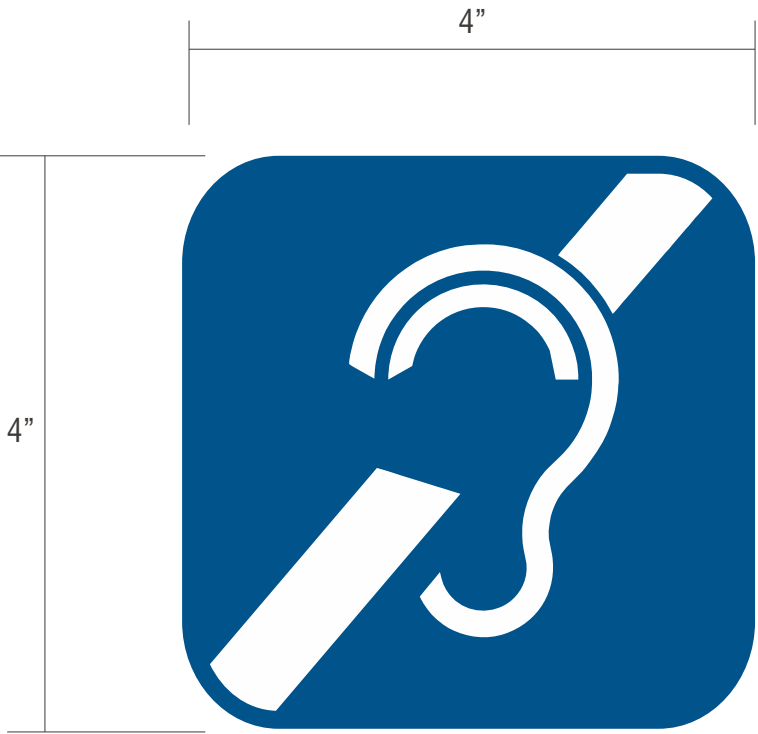
I01
SIGN TYPE ADA-EP W/ VINYL BACK



I02 I03
SIGN TYPE ADA-EX W/ VINYL BACK

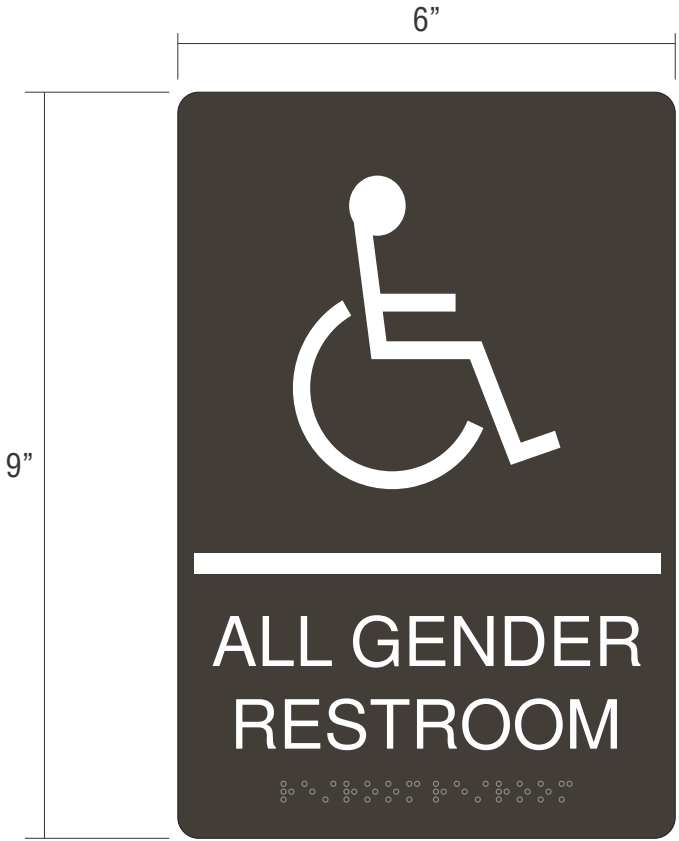


I04
SIGN TYPE ADA-TW

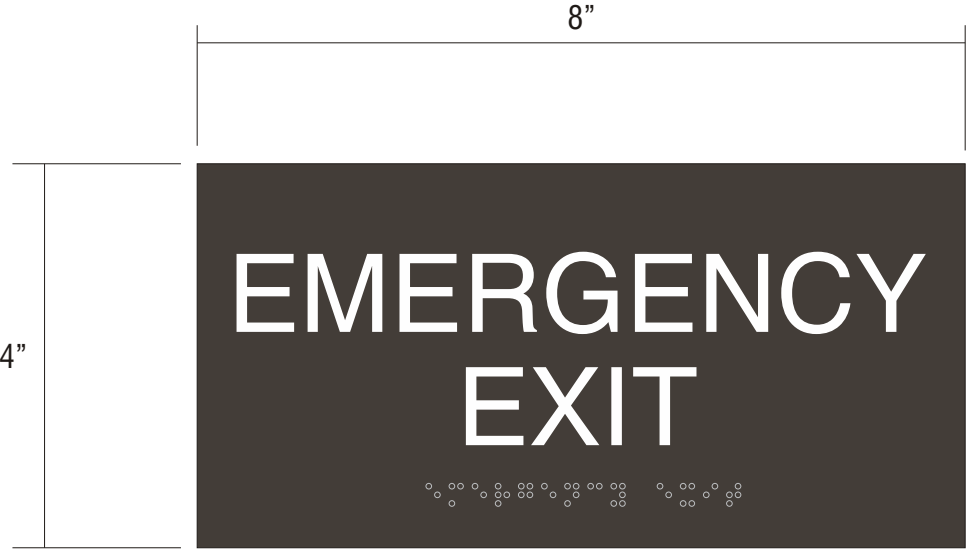


I05
SIGN TYPE ADA-TW-ALS

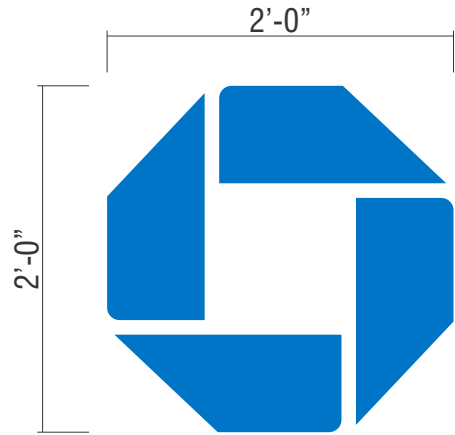
INTERIOR SIGNS



I06 **I07**
SIGN TYPE ADA-RRAG-A-G



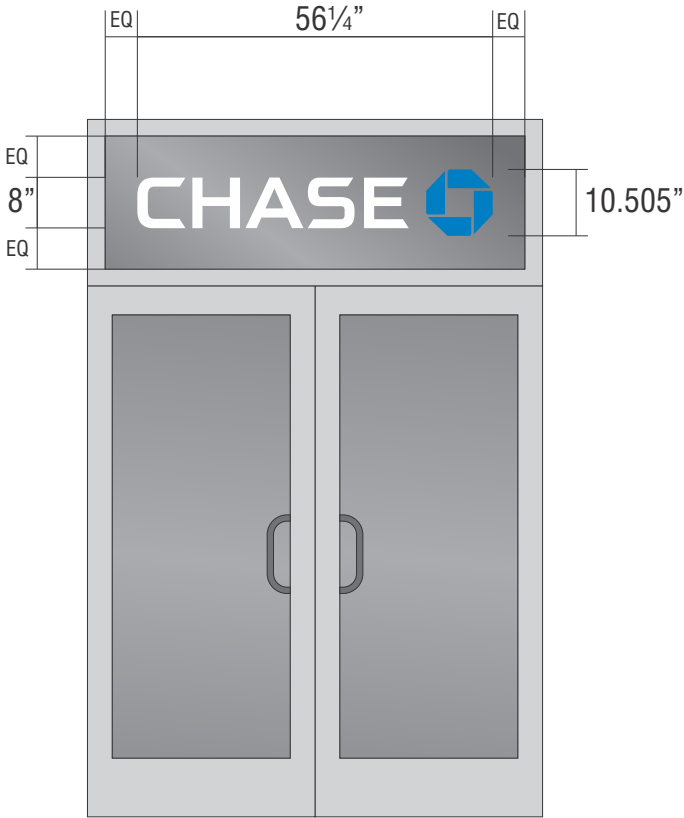
I08
SIGN TYPE ADA-EEX EMERGENCY EXIT



I09
SIGN TYPE OCT-24-INT **BLUE BITRO**



TYPICAL INTERIOR ELEVATION NOT TO SCALE



I10
SIGN TYPE CHA-VYL-10X56

