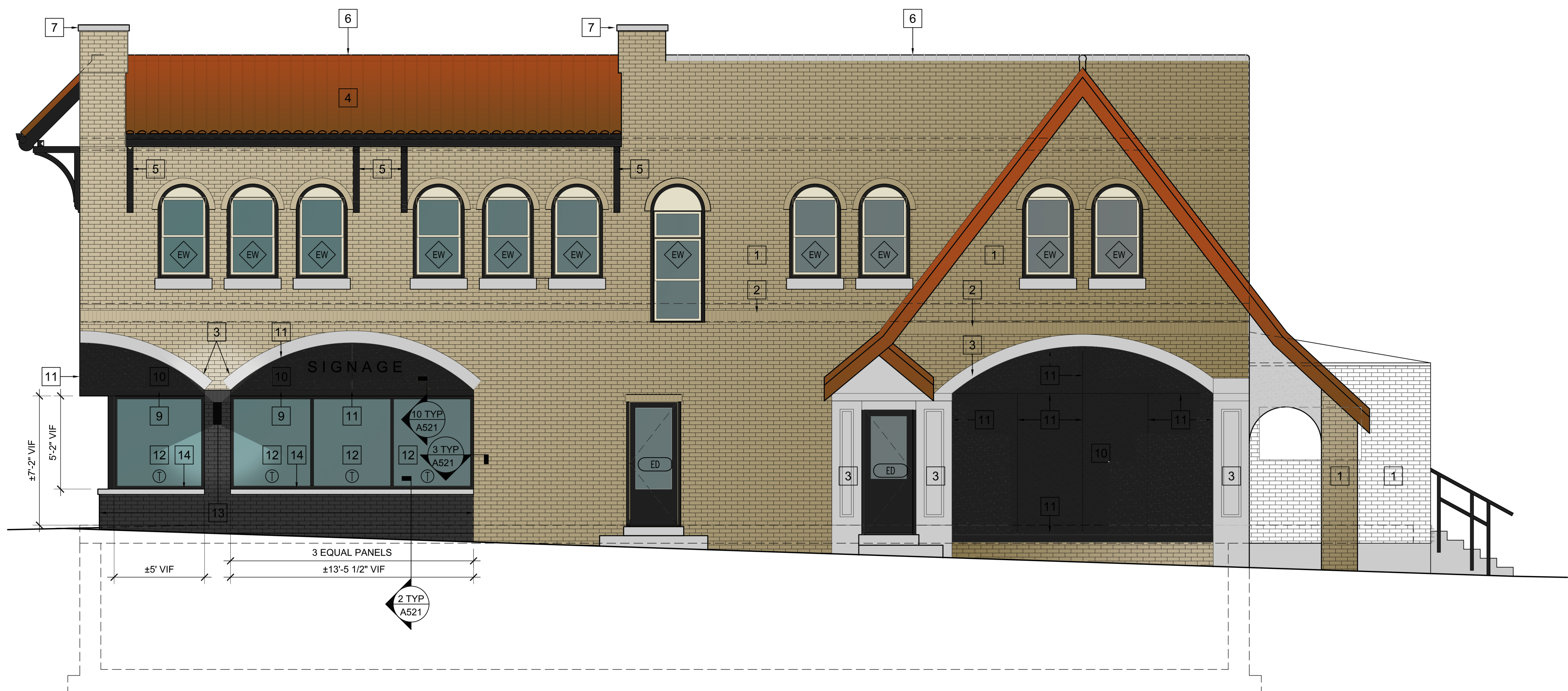




SOUTH ELEVATION

1/4" = 1'-0"

2



EAST ELEVATION

1/4" = 1'-0"

1

GENERAL NOTES

1. PRIOR TO PENETRATION OF ANY EXTERIOR WALL SURFACE THE LOCATION OF THE PENETRATION MUST BE COORDINATED AND APPROVED BY THE ARCHITECT. FAILURE TO OBTAIN PERMISSION MAY RESULT IN RELOCATION OF THE INSTALLED ITEM AND REPAIR OF THE AFFECTED SURFACES AT NO COST TO THE OWNER.
2. NOTE ONE ABOVE APPLIES TO ALL PENETRATIONS INCLUDING BUT NOT LIMITED TO ROOF SCUPPERS, UTILITY CONNECTIONS, VENTS, AIR INTAKES, ETC.
3. ALL JOINTS IN EXTERIOR MATERIALS ARE AN INDICATION OF DESIGN INTENT ONLY. ALL JOINTS TO FOLLOW MANUFACTURERS RECOMMENDATIONS OR GOOD PRACTICE FOR INSTALLATION AND REQUIRED JOINT LOCATIONS. NOTIFY ARCHITECT OF ANY DEVIATION FROM JOINT PATTERN PRIOR TO EXECUTION.
4. REFER TO A300 SHEETS FOR WINDOWS AND DOORS AND ASSOCIATED NOTES.

ELEVATION KEY NOTES

- 1 EXISTING BRICK MASONRY
 - 2 EXISTING BRICK SOLIDER COURSE
 - 3 EXISTING CAST TRIM
 - 4 EXISTING CLAY TILE ROOF
 - 5 EXISTING WOOD BRACKET
 - 6 EXISTING CLAY COPING
 - 7 EXISTING STONE COPING
 - 8 NEW 1x4 ENGINEERED COMPOSITE TRIM, PAINTED
 - 9 NEW 1x6 ENGINEERED COMPOSITE TRIM, PAINTED
 - 10 NEW SMOOTH FINISH FIBER CEMENT SIDING-1 ON COR-A-VENT SHIM SYSTEM, PAINTED
 - 11 NEW FIBER CEMENT SIDING ALUMINUM REVEAL TRIM SYSTEM
 - 12 NEW ALUMINUM STOREFRONT SYSTEM, PAINTED
 - 13 NEW BRICK MASONRY TO MATCH EXISTING MASONRY AND GROUT
 - 14 NEW CAST SILL
- ED EXISTING DOOR TO REMAIN
- EW EXISTING WINDOW TO REMAIN

EXTERIOR DOOR / WINDOW NOTES

1. ALL WINDOWS ARE TO MEET ALL CODE REQUIREMENTS - GC TO COORDINATE WITH SUPPLIER.
2. T = TEMPERED SAFETY GLASS PER CODE.
3. SWINGING DOORS WITH FULL LITES TO HAVE MINIMUM 10" HIGH BOTTOM RAIL PER ICC/ANSI A117.1 - 2009, 404.2.9.
4. REFER TO ELEVATION DRAWINGS FOR WINDOW OPERATION OR GROUPINGS.
5. GC TO VERIFY ALL WINDOW AND DOOR ROUGH OPENINGS IN FIELD PRIOR TO ORDERING WINDOW UNITS.
6. ALL GLAZING TO COMPLY WITH IBC 2015, CHAPTER 24 FOR SAFETY GLAZING MATERIALS, REQUIRED APPLICABLE TESTING AND LOCATIONS, GC AND SUPPLIER TO VERIFY.
7. CHANGES IN LEVEL GREATER THAN 1/4" IN HEIGHT AND NOT MORE THAN 1/2" MAXIMUM IN HEIGHT SHALL BE BEVELED WITH A SLOPE NOT STEEPER THAN 1:2. VERIFY WITH DOOR LOCATIONS AND COORDINATE WITH MANUFACTURER / SUPPLIER.
8. WINDOW AND DOOR SIZES ARE APPROXIMATE UNIT DIMENSIONS, NOT ROUGH OPENINGS. GC TO COORDINATE APPROVED WINDOW AND DOOR MANUFACTURER'S REQUIRED ADDITIONAL SHIM SPACE GIVEN POTENTIAL BUILDING SHRINKAGE AT WOOD FLOORS AND RESULTANT REQUIRED WINDOW AND DOOR ROUGH OPENINGS AND REPORT TO ARCH.
9. EXTERIOR DOOR CLEAR OPENING WITH DOOR SWUNG OPEN TO 90 DEGREES OR FULLY SLID OPEN TO BE MINIMUM 32" CLEAR WIDTH, GC AND SUPPLIER TO VERIFY AND REPORT TO ARCH.
10. REFER TO A3 SHEETS FOR EXTERIOR CLADDING MATERIALS ADJACENT TO WINDOW UNITS AND NUMBERED DETAILS.
11. 'EW' WINDOWS ARE UNITS TO BE REPLACED IN PLACE; VERIFY THESE UNIT SIZES IN FIELD.

STRIEGEL AGACKI STUDIO
1430 UNDERWOOD
WALWATOSA, WI 53213
TEL 414.793.3586

Owner:
North 7200, LLC
PO BOX 510932
MILWAUKEE, WI 53203

DATE	NO.	REVISION
04-10-25		PROGRESS SET

project name

TENANT
IMPROVEMENT

7200 W. NORTH AVENUE
WALWATOSA, WI 53213

ISSUED FOR REVIEW
NOT FOR CONSTRUCTION

SCALE:
COMPUTER FILE:

DRAWN BY:
PLOT DATE:
JOB NUMBER:
TITLE:
EXTERIOR ELEVATIONS

SHEET NUMBER

A301

© STRIEGEL AGACKI STUDIO, INC.

Black brick
proposed on
A301





SOUTH ELEVATION - ALT 2

1/4" = 1'-0"

2



EAST ELEVATION - ALT 2

1/4" = 1'-0"

1

GENERAL NOTES

1. PRIOR TO PENETRATION OF ANY EXTERIOR WALL SURFACE THE LOCATION OF THE PENETRATION MUST BE COORDINATED AND APPROVED BY THE ARCHITECT. FAILURE TO OBTAIN PERMISSION MAY RESULT IN RELOCATION OF THE INSTALLED ITEM AND REPAIR OF THE AFFECTED SURFACES AT NO COST TO THE OWNER.
2. NOTE ONE ABOVE APPLIES TO ALL PENETRATIONS INCLUDING BUT NOT LIMITED TO ROOF SCUPPERS, UTILITY CONNECTIONS, VENTS, AIR INTAKES, ETC.
3. ALL JOINTS IN EXTERIOR MATERIALS ARE AN INDICATION OF DESIGN INTENT ONLY. ALL JOINTS TO FOLLOW MANUFACTURERS RECOMMENDATIONS OR GOOD PRACTICE FOR INSTALLATION AND REQUIRED JOINT LOCATIONS. NOTIFY ARCHITECT OF ANY DEVIATION FROM JOINT PATTERN PRIOR TO EXECUTION.
4. REFER TO A300 SHEETS FOR WINDOWS AND DOORS AND ASSOCIATED NOTES.

ELEVATION KEY NOTES

- 1 EXISTING BRICK MASONRY
 - 2 EXISTING BRICK SOLIDER COURSE
 - 3 EXISTING CAST TRIM
 - 4 EXISTING CLAY TILE ROOF
 - 5 EXISTING WOOD BRACKET
 - 6 EXISTING CLAY COPING
 - 7 EXISTING STONE COPING
 - 8 NEW 1x4 ENGINEERED COMPOSITE TRIM, PAINTED
 - 9 NEW 1x6 ENGINEERED COMPOSITE TRIM, PAINTED
 - 10 NEW SMOOTH FINISH FIBER CEMENT SIDING-1 ON COR-A-VENT SHIM SYSTEM, PAINTED
 - 11 NEW FIBER CEMENT SIDING ALUMINUM REVEAL TRIM SYSTEM
 - 12 NEW ALUMINUM STOREFRONT SYSTEM, PAINTED
 - 13 NEW SPLIT FACE MASONRY UNIT
 - 14 NEW CAST SILL
 - 15 NEW SMOOTH FACE MASONRY UNIT
 - 16 NEW BRICK MASONRY
- ED EXISTING DOOR TO REMAIN
- EW EXISTING WINDOW TO REMAIN

EXTERIOR DOOR / WINDOW NOTES

1. ALL WINDOWS ARE TO MEET ALL CODE REQUIREMENTS - GC TO COORDINATE WITH SUPPLIER.
2. T = TEMPERED SAFETY GLASS PER CODE.
3. SWINGING DOORS WITH FULL LITES TO HAVE MINIMUM 10" HIGH BOTTOM RAIL PER ICC/ANSI A117.1 - 2009, 404.2.9.
4. REFER TO ELEVATION DRAWINGS FOR WINDOW OPERATION OR GROUPINGS.
5. GC TO VERIFY ALL WINDOW AND DOOR ROUGH OPENINGS IN FIELD PRIOR TO ORDERING WINDOW UNITS.
6. ALL GLAZING TO COMPLY WITH IBC 2015, CHAPTER 24 FOR SAFETY GLAZING MATERIALS, REQUIRED APPLICABLE TESTING AND LOCATIONS, GC AND SUPPLIER TO VERIFY.
7. CHANGES IN LEVEL GREATER THAN 1/4" IN HEIGHT AND NOT MORE THAN 1/2" MAXIMUM IN HEIGHT SHALL BE BEVELED WITH A SLOPE NOT STEEPER THAN 1:2. VERIFY WITH DOOR LOCATIONS AND COORDINATE WITH MANUFACTURER / SUPPLIER.
8. WINDOW AND DOOR SIZES ARE APPROXIMATE UNIT DIMENSIONS. NOT ROUGH OPENINGS. GC TO COORDINATE APPROVED WINDOW AND DOOR MANUFACTURER'S REQUIRED ADDITIONAL SHIM SPACE GIVEN POTENTIAL BUILDING SHRINKAGE AT WOOD FLOORS AND RESULTANT REQUIRED WINDOW AND DOOR ROUGH OPENINGS AND REPORT TO ARCH.
9. EXTERIOR DOOR CLEAR OPENING WITH DOOR SWING OPEN TO 90 DEGREES OR FULLY SLID OPEN TO BE MINIMUM 32" CLEAR WIDTH, GC AND SUPPLIER TO VERIFY AND REPORT TO ARCH.
10. REFER TO A3 SHEETS FOR EXTERIOR CLADDING MATERIALS ADJACENT TO WINDOW UNITS AND NUMBERED DETAILS.
11. 'EW' WINDOWS ARE UNITS TO BE REPLACED IN PLACE. VERIFY THESE UNIT SIZES IN FIELD.

STRIEGEL AGACKI STUDIO
1430 UNDERWOOD
WALWATOSA, WI 53213
TEL 414.793.3586

Owner:
North 7200, LLC
PO BOX 510932
MILWAUKEE, WI 53203

DATE	NO.	REVISION
04-10-25		PROGRESS SET

project name

TENANT
IMPROVEMENT

7200 W. NORTH AVENUE
WALWATOSA, WI 53213

ISSUED FOR REVIEW
NOT FOR CONSTRUCTION

SCALE:
COMPUTER FILE:

DRAWN BY:
PLOT DATE:
JOB NUMBER:
TITLE:

EXTERIOR ELEVATIONS

SHEET NUMBER
A302 - ALT

© STRIEGEL AGACKI STUDIO, INC.

SATIN / ROCKED
COLOR MAY VARY FROM SAMPLE

Building Stone - Brick - Limestone
www.arriscraft.com | 800.265.8123

Smooth material
mix

Rusticated stone
material mix