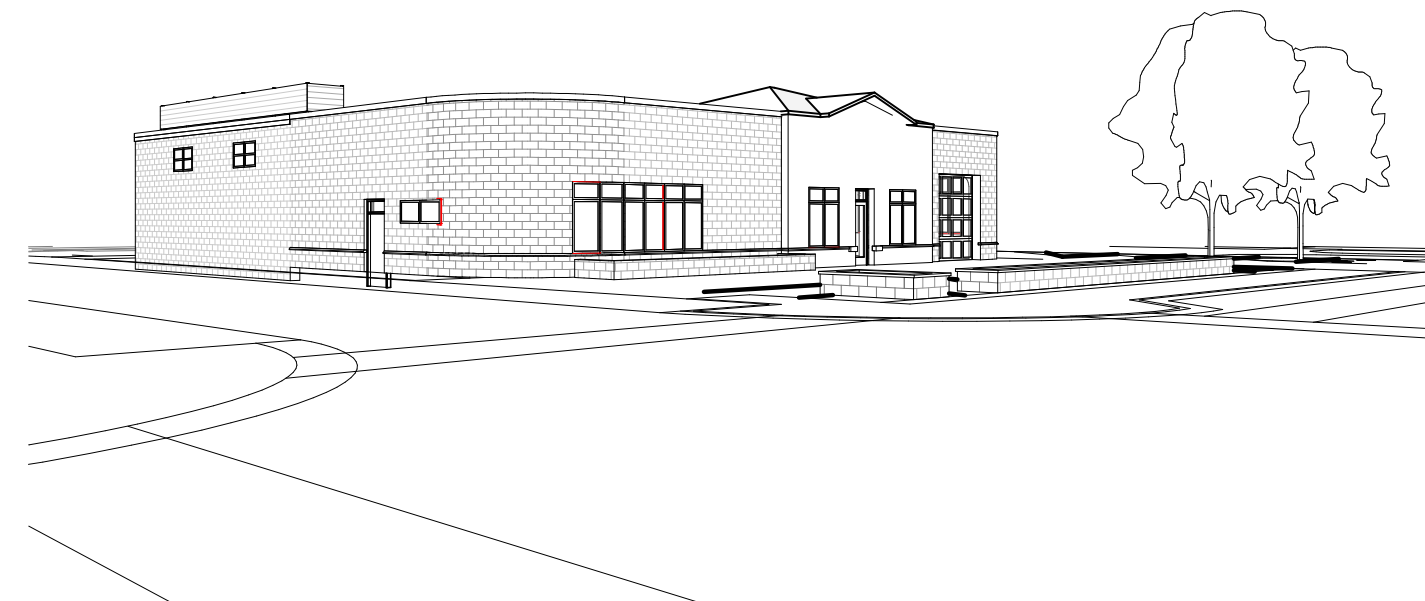




3 NORTH AVE - EASTBOUND
A201



2 NORTH AVE - WESTBOUND
A201



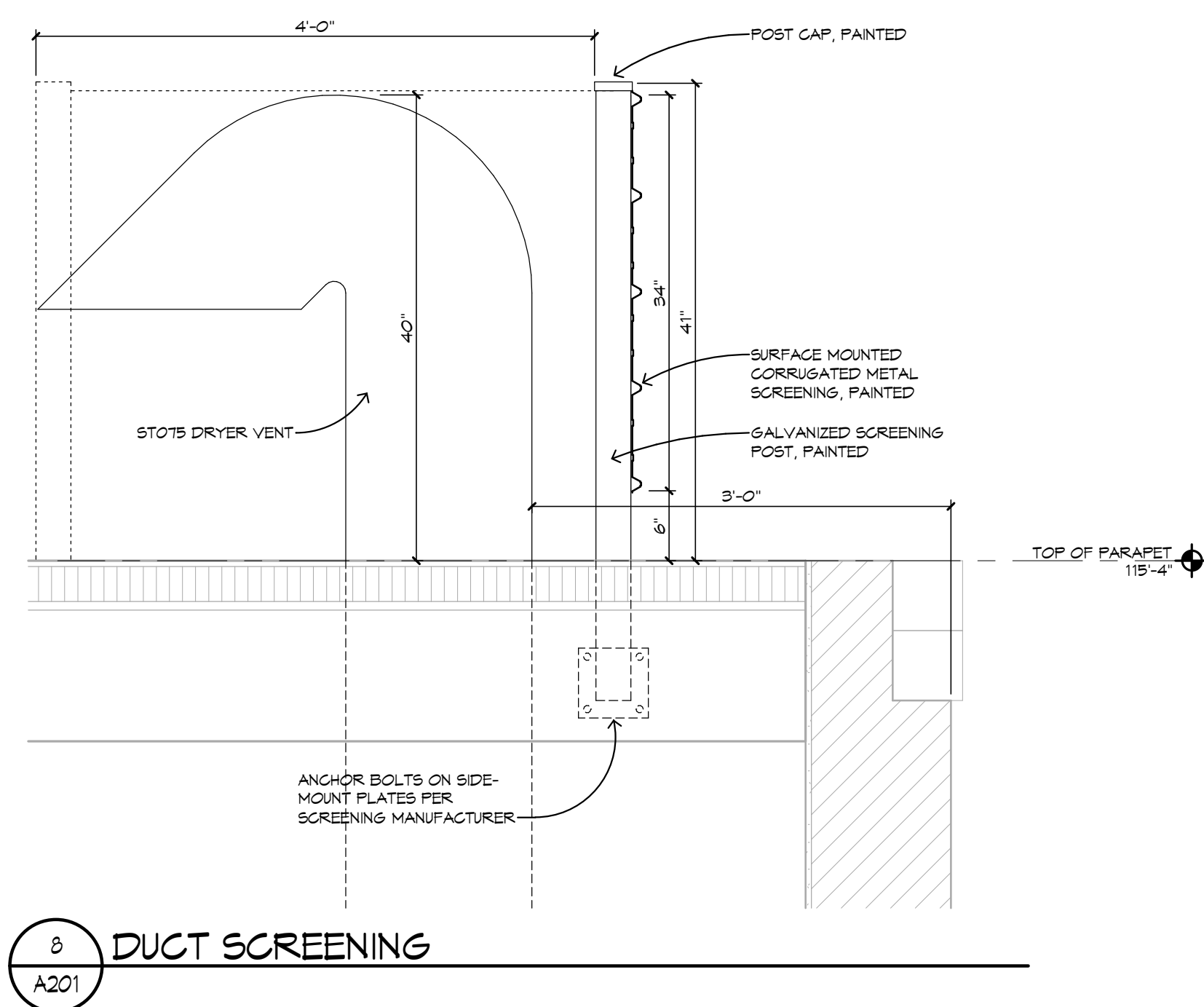
5 NORTH AVE - EAST PASSING
A201



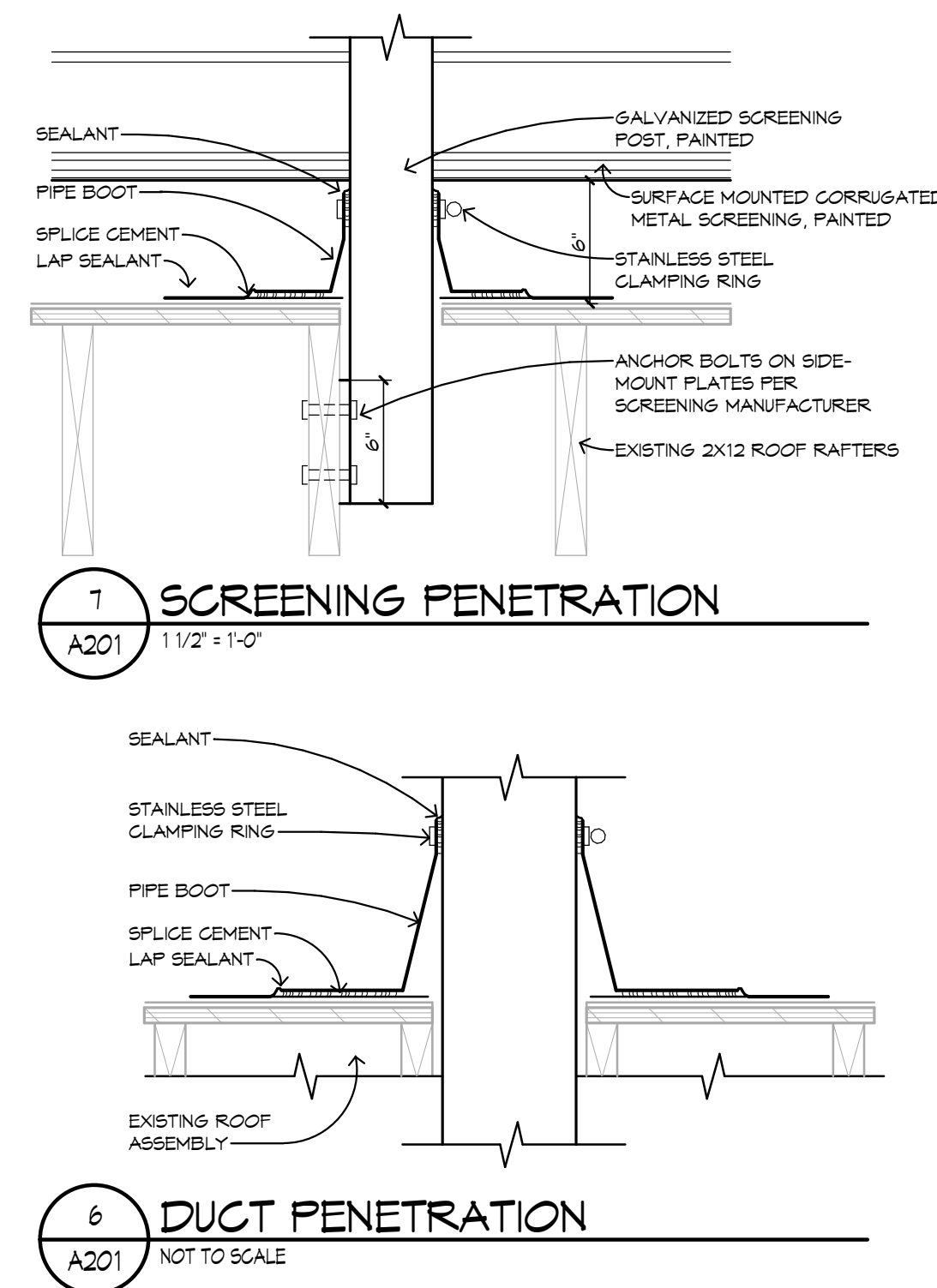
4 NORTH AVE - WEST PASSING
A201



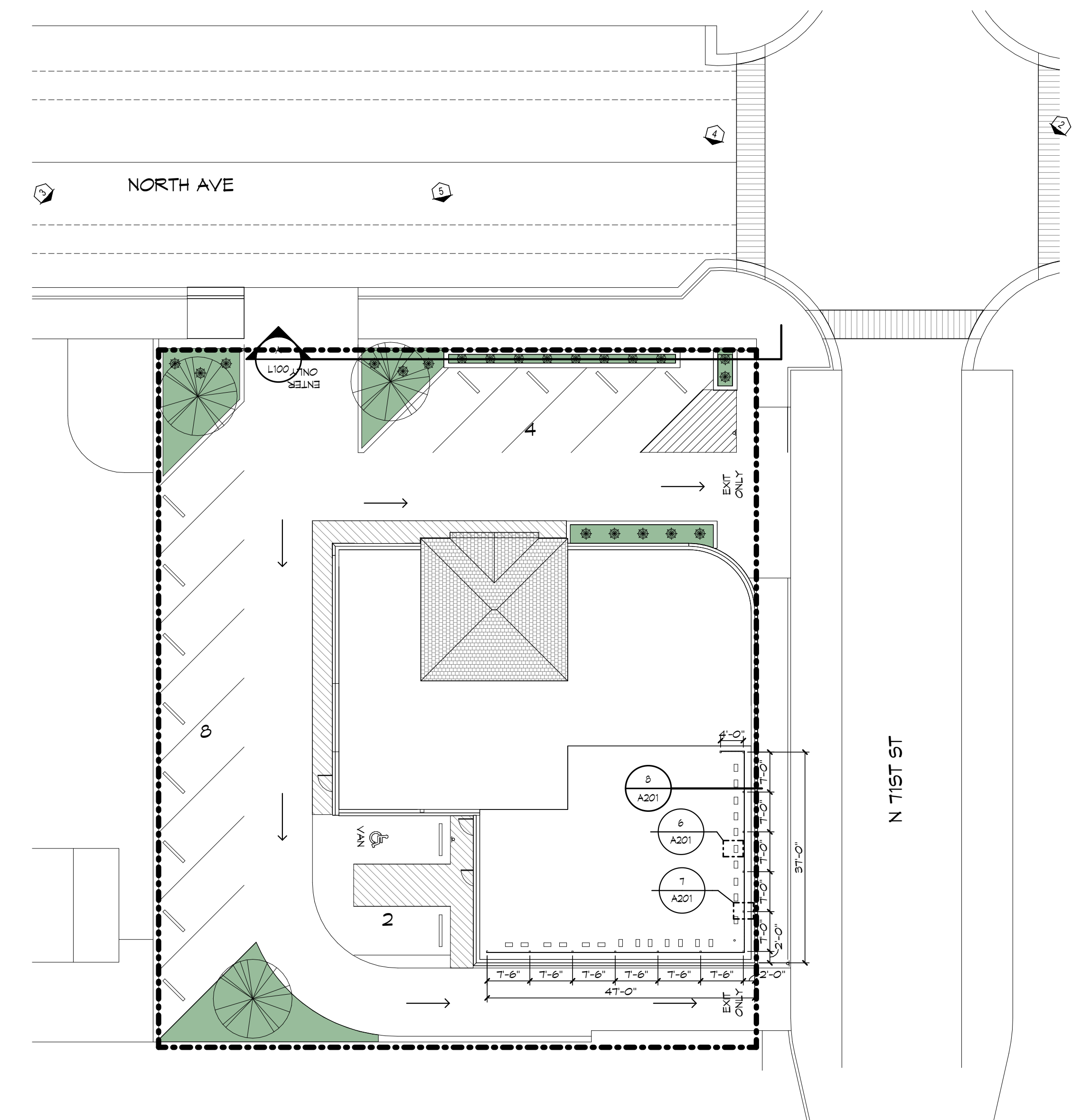
Sherwin Williams
Iron ore (SW 7069)



3 DUCT SCREENING
A201



6 DUCT PENETRATION
A201 NOT TO SCALE



FLASH LAUNDROMAT

7105 W North Ave, Wauwatosa

REVISION 1 (BEARING WALL): 11-19-25
REVISION 2 (DRYER COUNT): 1/12/26
REVISION 3 (STOREFRONT): 3/3/26
REVISION 4 (SCREENING): 4/1/26

NEW CONSTRUCTION

4-1-26