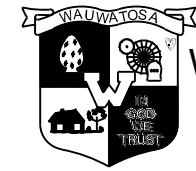


CITY OF WAUWATOSA STORM SEWER SPOT IMPROVEMENTS CONTRACT 26-41 PROJECT #4026



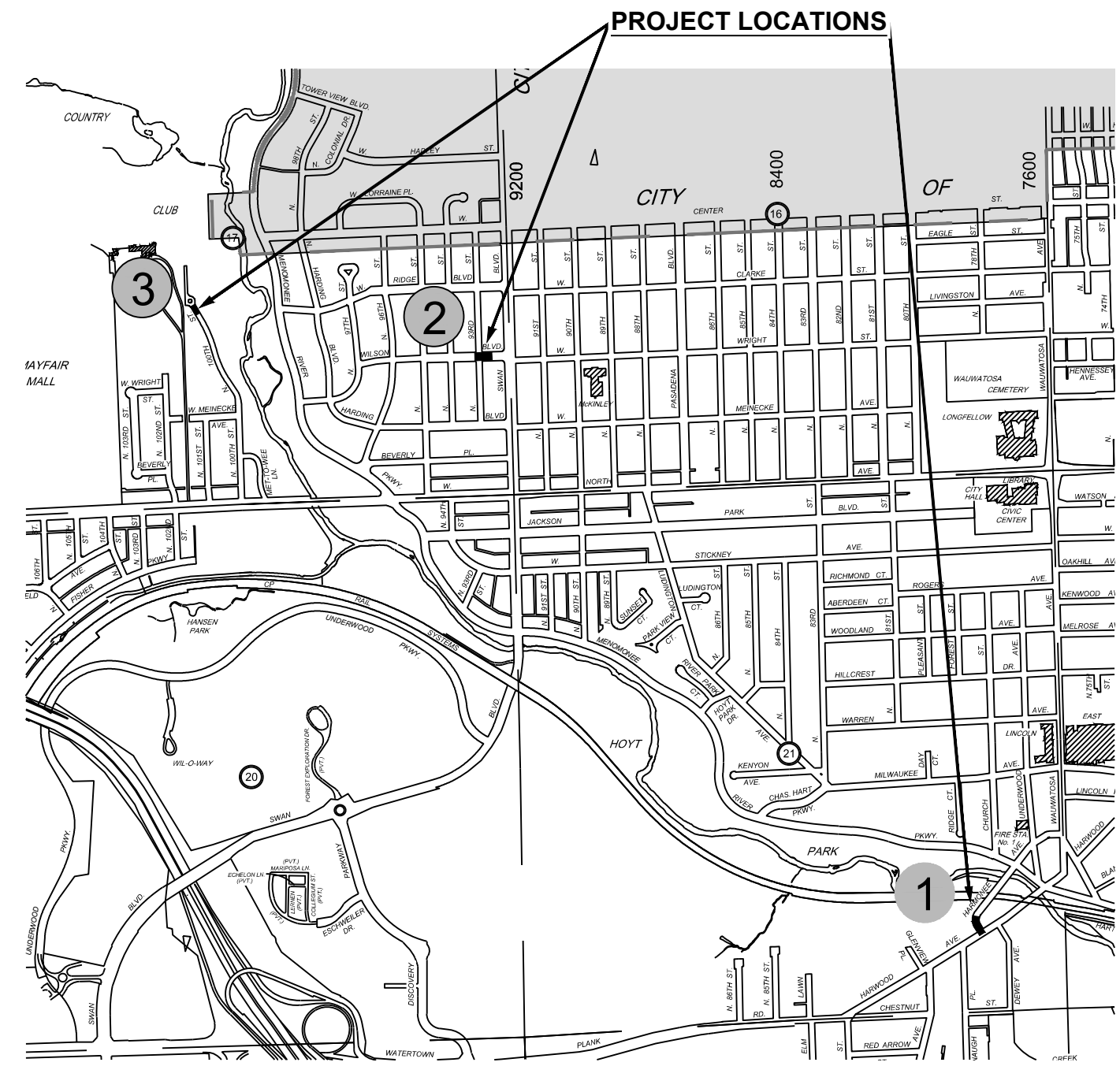
**CITY OF
WAUWATOSA**
ENGINEERING
SERVICES
DIVISION

PLAN INDEX		
SHEET No.	DESCRIPTION	FILE No.
C01-C03	STORM PLAN SHEETS	41-1011
C04	CONSTRUCTION DETAILS	41-1011
C05	TRAFFIC CONTROL	41-1011

PROJECT COORDINATION:
 MAHMOUD JASSAR (MJ), PE
 CONSTRUCTION MANAGER
 (414) 479-8927
 MJASSAR@WAUWATOSA.NET

PLAN PREPARATION:
 MAGGIE ANDERSON, PE
 SENIOR CIVIL ENGINEER
 (414) 479-3444
 MANDERSON@WAUWATOSA.NET

- LOCATION**
-
- 1** HARWOOD AVE & HARMONEE AVE
 - 2** 93RD ST & WILSON BLVD
 - 3** 2500 BLOCK OF NORTH 100TH ST



APPROVED BY THE BOARD OF PUBLIC WORKS OF THE CITY OF WAUWATOSA, WISCONSIN BY RESOLUTION ADOPTED:

DATE	CITY CLERK
SUBMITTED FOR APPROVAL: JUNE 17, 2026	CITY ENGINEER REG. PROF. ENGR.

CITY OF WAUWATOSA
ENGINEERING SERVICES DIVISION

STORM SEWER SPOT IMPROVEMENTS

VARIOUS LOCATIONS

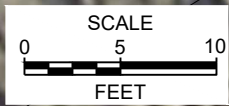
SCALE: AS NOTED SHEETS: 1 THROUGH 6

Underground utilities have been shown to a reasonable degree of accuracy using diggers hotline field locates and record drawings. However, the city does not guarantee their exact size, location or depth or that of others not shown. The contractor shall verify the existence of these utilities and those not shown. Costs for locating and delay shall be incidental to the contract.

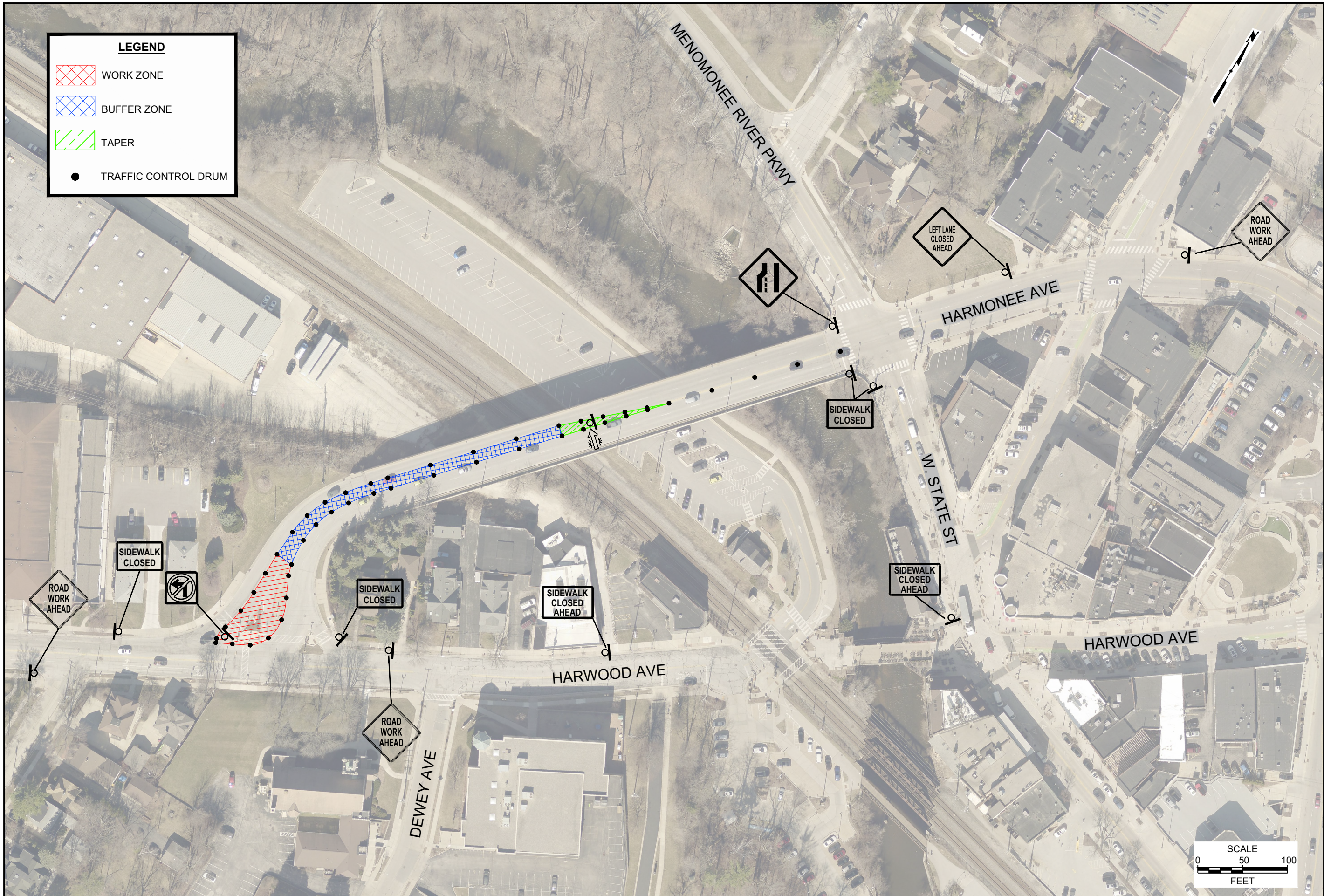
PROP. REPLACE FRAME/COVER & REBUILD CHIMNEY 1.33 VF
 EX. STM. MH ST15-053
 RIM = 100.36'
 12" (NW) INV = 94.86'
 12" (NE) INV = 94.76'
 12" (S) INV = 95.06'
 REBUILD CHIMNEY WITH PRECAST ADJUSTING RINGS TO BRING MANHOLE TO GRADE. SALVAGE EXISTING IRON FOR THE CITY. NEW IRON TO BE A CITY SUPPLIED NEENAH R-1661-B FRAME WITH CITY SUPPLIED STORM COVER. BACKFILL TO TOP OF TRENCH. INCLUDE ALL COSTS WITH THE PRICE OF THE CHIMNEY REBUILD. SURFACE REPLACEMENT SHALL BE HMA, 2.5" OF 4-MT 58-28 S OVER 2.5" OF 3-MT 58-28 S OVER 2.5" OF 3-MT 58-28 S, INCLUDING CURB AND GUTTER REPLACEMENT.

PROP. SAWCUT AREA

LOOP DETECTOR



CONTRACT:	26-41	DESCRIPTION	
FILE NO:	41-1011	DATE	
DRAWN BY:	VB-F		
CHECKED BY:	MJA		
SCALE:	AS SHOWN		
C-01		CITY OF WAUWATOSA ENGINEERING SERVICES DIVISION	
STORM STRUCTURE CHIMNEY REBUILD		SITE 1	
HARMONEE AVE. & HARWOOD AVE.			



LEGEND

- WORK ZONE
- BUFFER ZONE
- TAPER
- TRAFFIC CONTROL DRUM

CONTRACT: 26-41	DESCRIPTION:
FILE NO.: 41-1011	
DRAWN BY: WAT	
CHECKED BY: MJA	
SCALE: AS SHOWN	
C-05	CITY OF WAUWATOSA
ENGINEERING SERVICES DIVISION	
TRAFFIC CONTROL PLAN	
HARMONEE AVE	
FROM: UNDERWOOD AVE	TO: HARWOOD AVE