

CLIENT:

MILWAUKEE REGIONAL
MEDICAL CENTER

WEST CAMPUS DEVELOPMENT
INFRASTRUCTURE IMPROVEMENTS

PROJECT TITLE:

PHASE 2A - ROADWAY & UTILITIES

ISSUE:

01 04/30/26 CB01

PROJECT INFORMATION:

PROJECT NUMBER: 2024-1100-04

DATE:

DRAWN BY: MRD

CHECKED BY: BMM

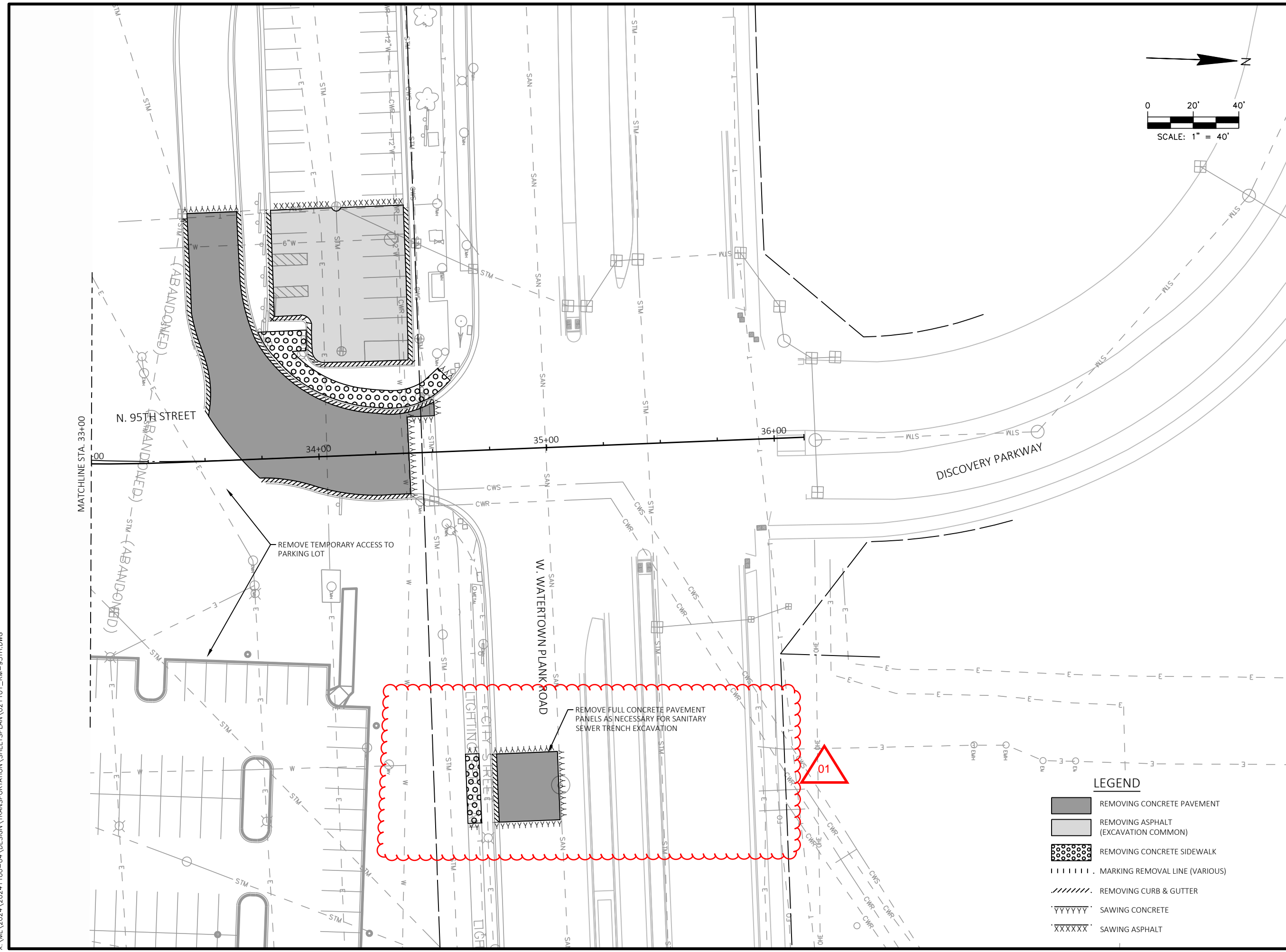
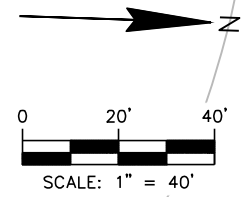
APPROVED BY: ACO

SCALE: 1 IN:40 FT

SHEET TITLE:

REMOVAL PLAN -
N. 95TH STREET

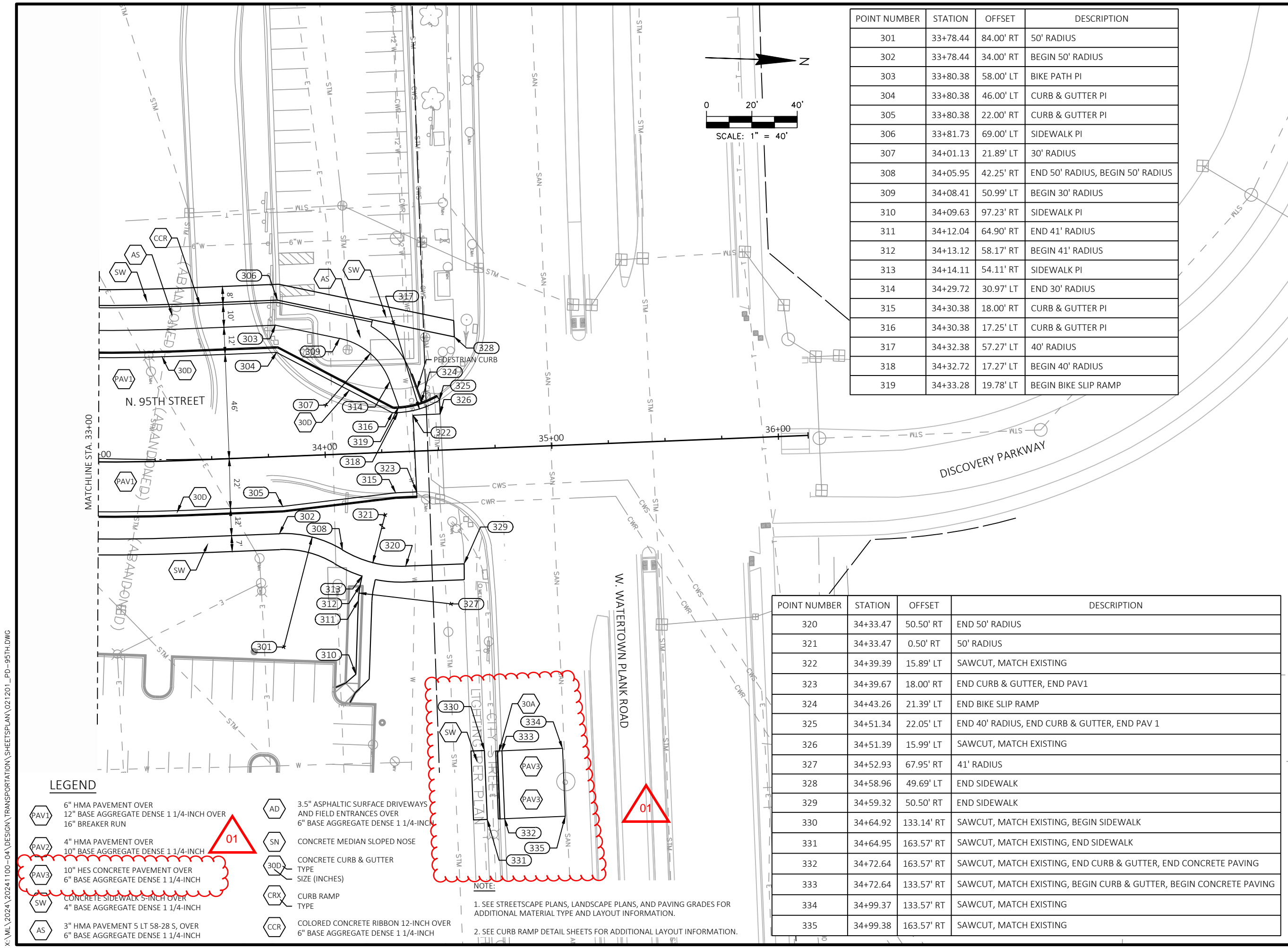
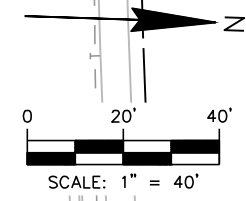
SHEET NUMBER:



- LEGEND**
- REMOVING CONCRETE PAVEMENT
 - REMOVING ASPHALT (EXCAVATION COMMON)
 - REMOVING CONCRETE SIDEWALK
 - MARKING REMOVAL LINE (VARIOUS)
 - REMOVING CURB & GUTTER
 - SAWING CONCRETE
 - SAWING ASPHALT

POINT NUMBER	STATION	OFFSET	DESCRIPTION
301	33+78.44	84.00' RT	50' RADIUS
302	33+78.44	34.00' RT	BEGIN 50' RADIUS
303	33+80.38	58.00' LT	BIKE PATH PI
304	33+80.38	46.00' LT	CURB & GUTTER PI
305	33+80.38	22.00' RT	CURB & GUTTER PI
306	33+81.73	69.00' LT	SIDEWALK PI
307	34+01.13	21.89' LT	30' RADIUS
308	34+05.95	42.25' RT	END 50' RADIUS, BEGIN 50' RADIUS
309	34+08.41	50.99' LT	BEGIN 30' RADIUS
310	34+09.63	97.23' RT	SIDEWALK PI
311	34+12.04	64.90' RT	END 41' RADIUS
312	34+13.12	58.17' RT	BEGIN 41' RADIUS
313	34+14.11	54.11' RT	SIDEWALK PI
314	34+29.72	30.97' LT	END 30' RADIUS
315	34+30.38	18.00' RT	CURB & GUTTER PI
316	34+30.38	17.25' LT	CURB & GUTTER PI
317	34+32.38	57.27' LT	40' RADIUS
318	34+32.72	17.27' LT	BEGIN 40' RADIUS
319	34+33.28	19.78' LT	BEGIN BIKE SLIP RAMP

POINT NUMBER	STATION	OFFSET	DESCRIPTION
320	34+33.47	50.50' RT	END 50' RADIUS
321	34+33.47	0.50' RT	50' RADIUS
322	34+39.39	15.89' LT	SAWCUT, MATCH EXISTING
323	34+39.67	18.00' RT	END CURB & GUTTER, END PAV1
324	34+43.26	21.39' LT	END BIKE SLIP RAMP
325	34+51.34	22.05' LT	END 40' RADIUS, END CURB & GUTTER, END PAV 1
326	34+51.39	15.99' LT	SAWCUT, MATCH EXISTING
327	34+52.93	67.95' RT	41' RADIUS
328	34+58.96	49.69' LT	END SIDEWALK
329	34+59.32	50.50' RT	END SIDEWALK
330	34+64.92	133.14' RT	SAWCUT, MATCH EXISTING, BEGIN SIDEWALK
331	34+64.95	163.57' RT	SAWCUT, MATCH EXISTING, END SIDEWALK
332	34+72.64	163.57' RT	SAWCUT, MATCH EXISTING, END CURB & GUTTER, END CONCRETE PAVING
333	34+72.64	133.57' RT	SAWCUT, MATCH EXISTING, BEGIN CURB & GUTTER, BEGIN CONCRETE PAVING
334	34+99.37	133.57' RT	SAWCUT, MATCH EXISTING
335	34+99.38	163.57' RT	SAWCUT, MATCH EXISTING



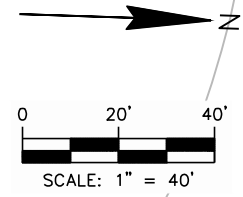
LEGEND

- 6" HMA PAVEMENT OVER 12" BASE AGGREGATE DENSE 1 1/4-INCH OVER 16" BREAKER RUN
- 4" HMA PAVEMENT OVER 10" BASE AGGREGATE DENSE 1 1/4-INCH
- 10" HES CONCRETE PAVEMENT OVER 6" BASE AGGREGATE DENSE 1 1/4-INCH
- CONCRETE SIDEWALK 5-INCH OVER 4" BASE AGGREGATE DENSE 1 1/4-INCH
- 3" HMA PAVEMENT 5 LT 58-28 S, OVER 6" BASE AGGREGATE DENSE 1 1/4-INCH
- 3.5" ASPHALTIC SURFACE DRIVEWAYS AND FIELD ENTRANCES OVER 6" BASE AGGREGATE DENSE 1 1/4-INCH
- CONCRETE MEDIAN SLOPED NOSE
- CONCRETE CURB & GUTTER TYPE SIZE (INCHES)
- CURB RAMP TYPE
- COLORED CONCRETE RIBBON 12-INCH OVER 6" BASE AGGREGATE DENSE 1 1/4-INCH

NOTE:
1. SEE STREETSCAPE PLANS, LANDSCAPE PLANS, AND PAVING GRADES FOR ADDITIONAL MATERIAL TYPE AND LAYOUT INFORMATION.
2. SEE CURB RAMP DETAIL SHEETS FOR ADDITIONAL LAYOUT INFORMATION.

LEGEND

- XXX.XX PROPOSED PAVEMENT GRADE
- (XXX.XX) EXISTING PAVEMENT GRADE
- HIGHSIDE CURB & GUTTER
- CONTOURS FROM MRMC PROPOSED MASS GRADING AND GRADING PREVIOUSLY COMPLETED BY OTHERS



The Avenue
 275 West Wisconsin Avenue,
 Suite 300
 Milwaukee, WI 53203-3306
 414 / 259 1500
 414 / 259 0037 fax

www.graef-usa.com

CLIENT:

MILWAUKEE REGIONAL
MEDICAL CENTER

WEST CAMPUS DEVELOPMENT
 INFRASTRUCTURE IMPROVEMENTS

PROJECT TITLE:

PHASE 2A - ROADWAY & UTILITIES

ISSUE:

01 04/30/26 CB01

PROJECT INFORMATION:

PROJECT NUMBER: 2024-1100-04

DATE:

DRAWN BY: MRD

CHECKED BY: BMM

APPROVED BY: ACO

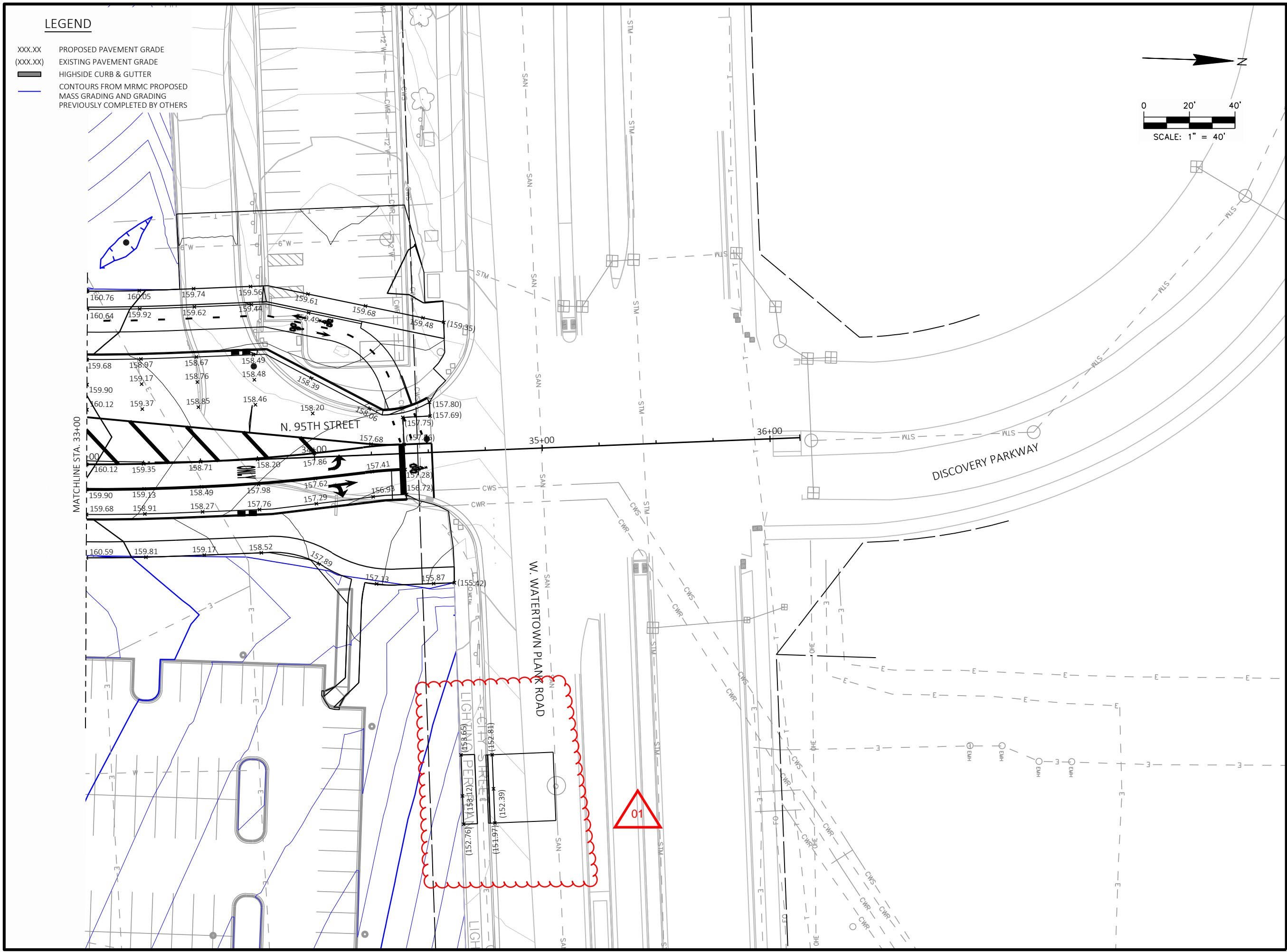
SCALE: 1 IN:40 FT

SHEET TITLE:

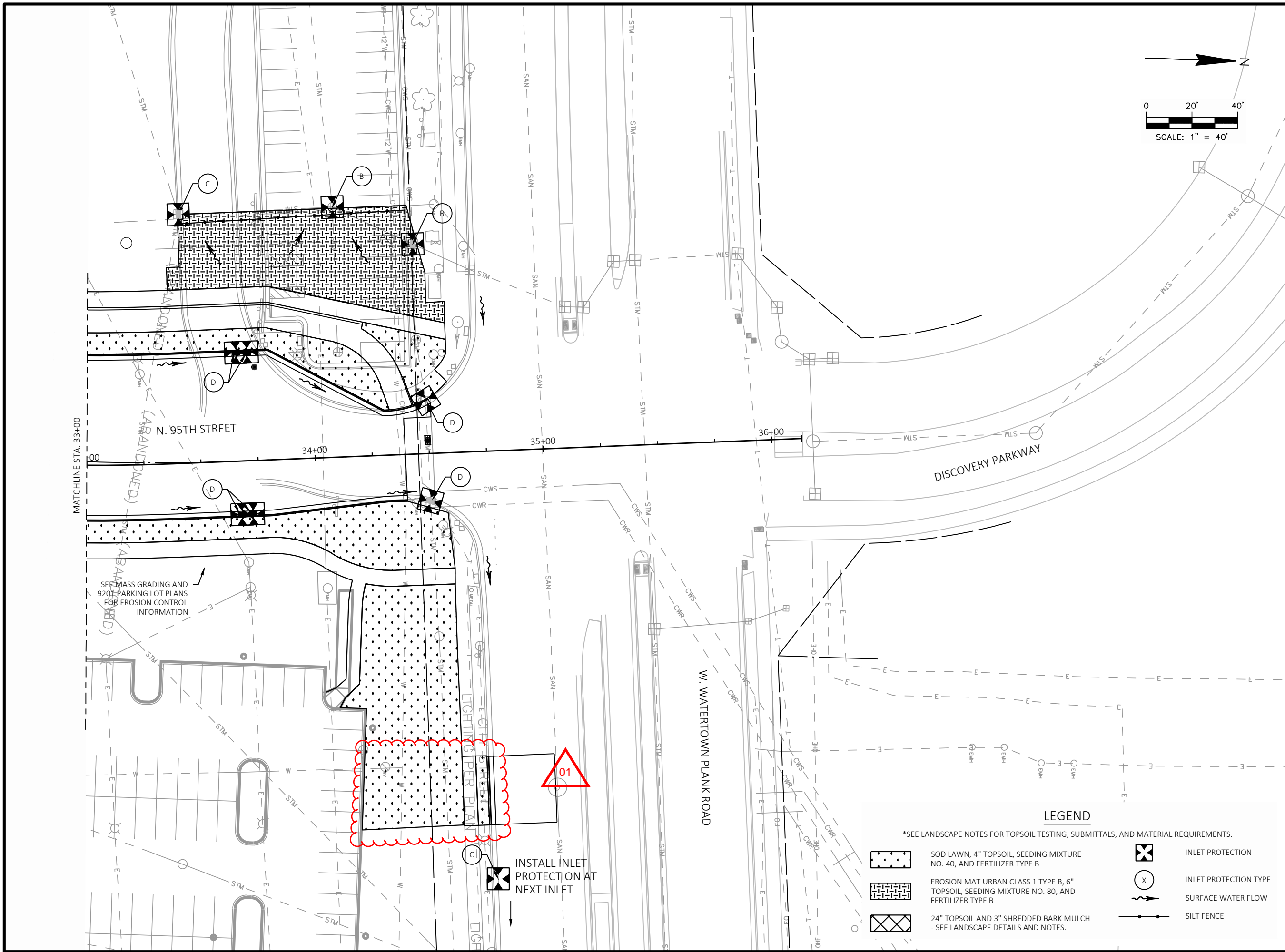
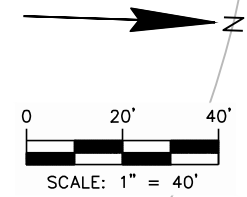
PAVING GRADES -
 N. 95TH STREET

SHEET NUMBER:

April 30, 2026 7:50 AM X:\ML\2024\20241100-04\DESIGN\TRANSPORTATION\SHEETS\PLAN\021401_ID-95TH.DWG



01



N. 95TH STREET

DISCOVERY PARKWAY

W. WATERTOWN PLANK ROAD

MATCHLINE STA. 33+00

34+00

35+00

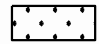
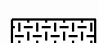



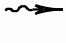
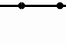
36+00

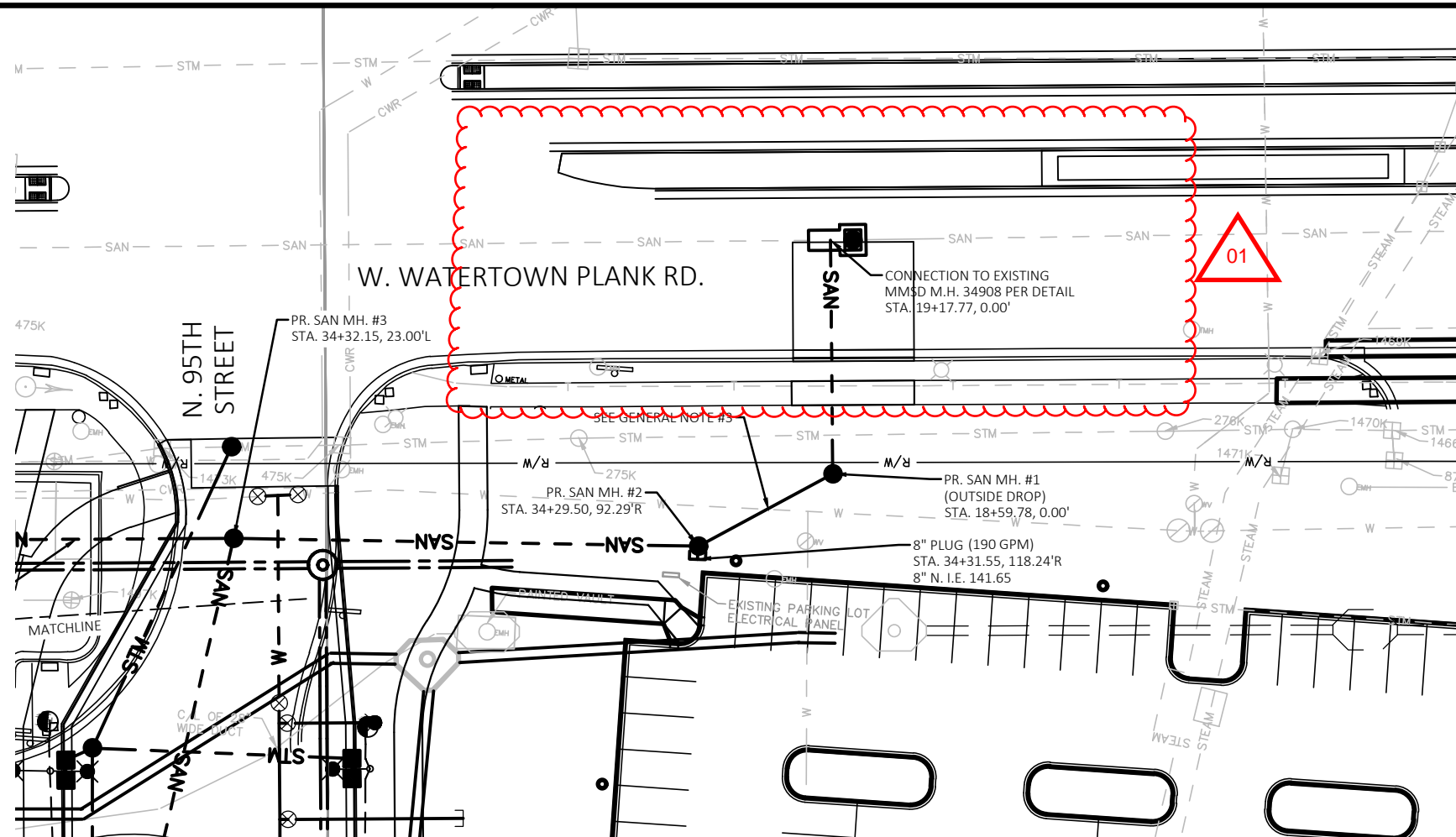
SEE MASS GRADING AND
9201 PARKING LOT PLANS
FOR EROSION CONTROL
INFORMATION

INSTALL INLET
PROTECTION AT
NEXT INLET

LEGEND

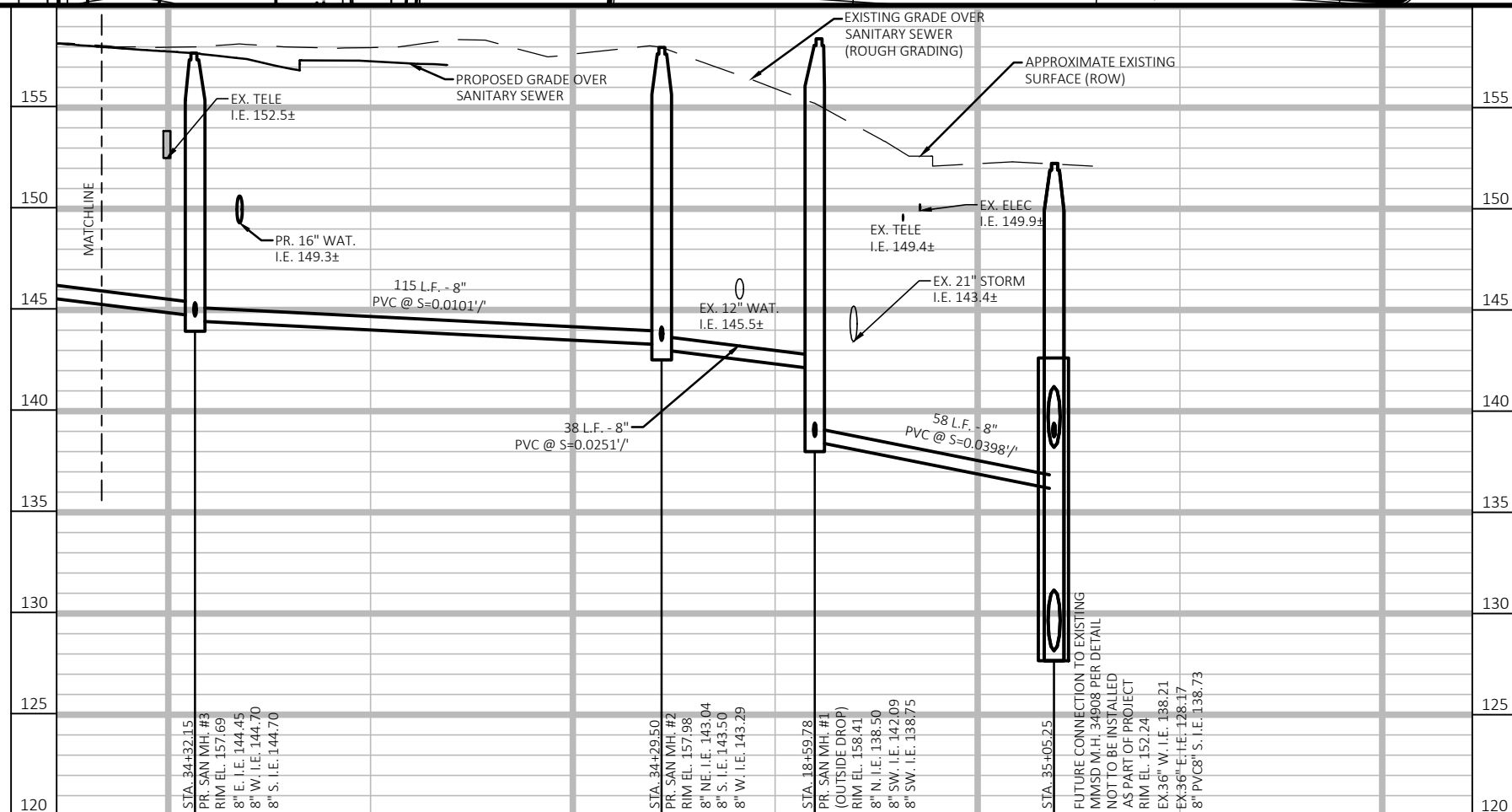
*SEE LANDSCAPE NOTES FOR TOPSOIL TESTING, SUBMITTALS, AND MATERIAL REQUIREMENTS.

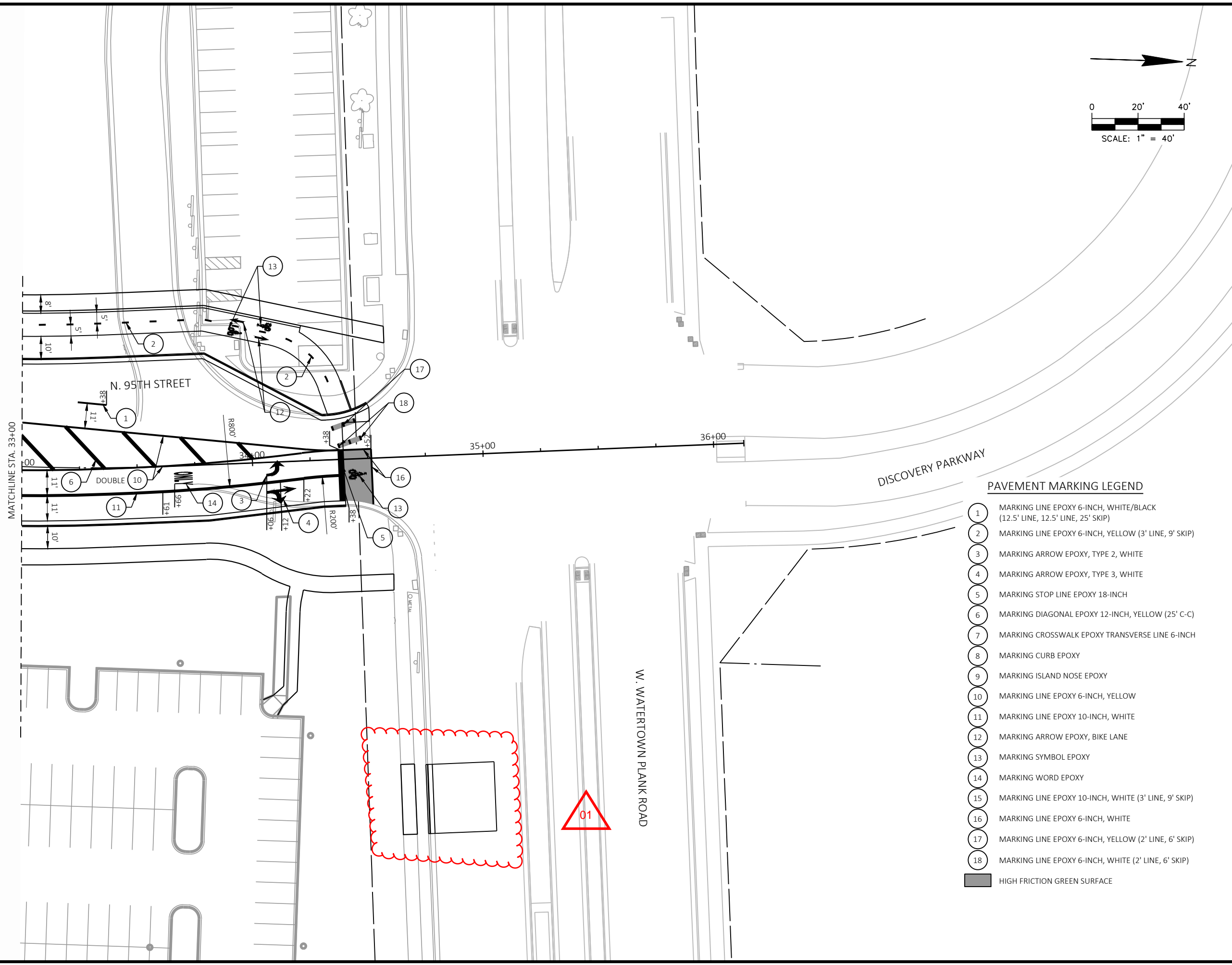
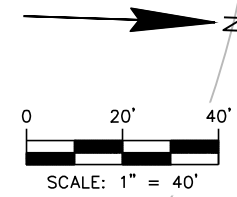
-  SOD LAWN, 4" TOPSOIL, SEEDING MIXTURE NO. 40, AND FERTILIZER TYPE B
-  EROSION MAT URBAN CLASS 1 TYPE B, 6" TOPSOIL, SEEDING MIXTURE NO. 80, AND FERTILIZER TYPE B
-  24" TOPSOIL AND 3" SHREDDED BARK MULCH - SEE LANDSCAPE DETAILS AND NOTES.
-  INLET PROTECTION
-  INLET PROTECTION TYPE
-  SURFACE WATER FLOW
-  SILT FENCE



GENERAL NOTES

1. SEE INDEX SHEET 2 FOR GENERAL NOTES.
2. SEE SANITARY SEWER OVERVIEW SHEET FOR SANITARY SEWER NOTES.
3. CONTRACTOR TO PROVIDE MEANS, METHOD, AND POSSIBLE SOLUTIONS (ISOLATION/REMOVE AND REPLACE) FOR THE PROPOSED WATER MAIN CROSSING.





PAVEMENT MARKING LEGEND

- 1 MARKING LINE EPOXY 6-INCH, WHITE/BLACK (12.5' LINE, 12.5' LINE, 25' SKIP)
- 2 MARKING LINE EPOXY 6-INCH, YELLOW (3' LINE, 9' SKIP)
- 3 MARKING ARROW EPOXY, TYPE 2, WHITE
- 4 MARKING ARROW EPOXY, TYPE 3, WHITE
- 5 MARKING STOP LINE EPOXY 18-INCH
- 6 MARKING DIAGONAL EPOXY 12-INCH, YELLOW (25' C-C)
- 7 MARKING CROSSWALK EPOXY TRANSVERSE LINE 6-INCH
- 8 MARKING CURB EPOXY
- 9 MARKING ISLAND NOSE EPOXY
- 10 MARKING LINE EPOXY 6-INCH, YELLOW
- 11 MARKING LINE EPOXY 10-INCH, WHITE
- 12 MARKING ARROW EPOXY, BIKE LANE
- 13 MARKING SYMBOL EPOXY
- 14 MARKING WORD EPOXY
- 15 MARKING LINE EPOXY 10-INCH, WHITE (3' LINE, 9' SKIP)
- 16 MARKING LINE EPOXY 6-INCH, WHITE
- 17 MARKING LINE EPOXY 6-INCH, YELLOW (2' LINE, 6' SKIP)
- 18 MARKING LINE EPOXY 6-INCH, WHITE (2' LINE, 6' SKIP)
- HIGH FRICTION GREEN SURFACE

CLIENT:

MILWAUKEE REGIONAL
MEDICAL CENTER

WEST CAMPUS DEVELOPMENT
INFRASTRUCTURE IMPROVEMENTS

PROJECT TITLE:

PHASE 2A - ROADWAY & UTILITIES

ISSUE:

01 04/30/26 CB01

PROJECT INFORMATION:

PROJECT NUMBER: 2024-1100-04

DATE:

DRAWN BY: MRD

CHECKED BY: BMM

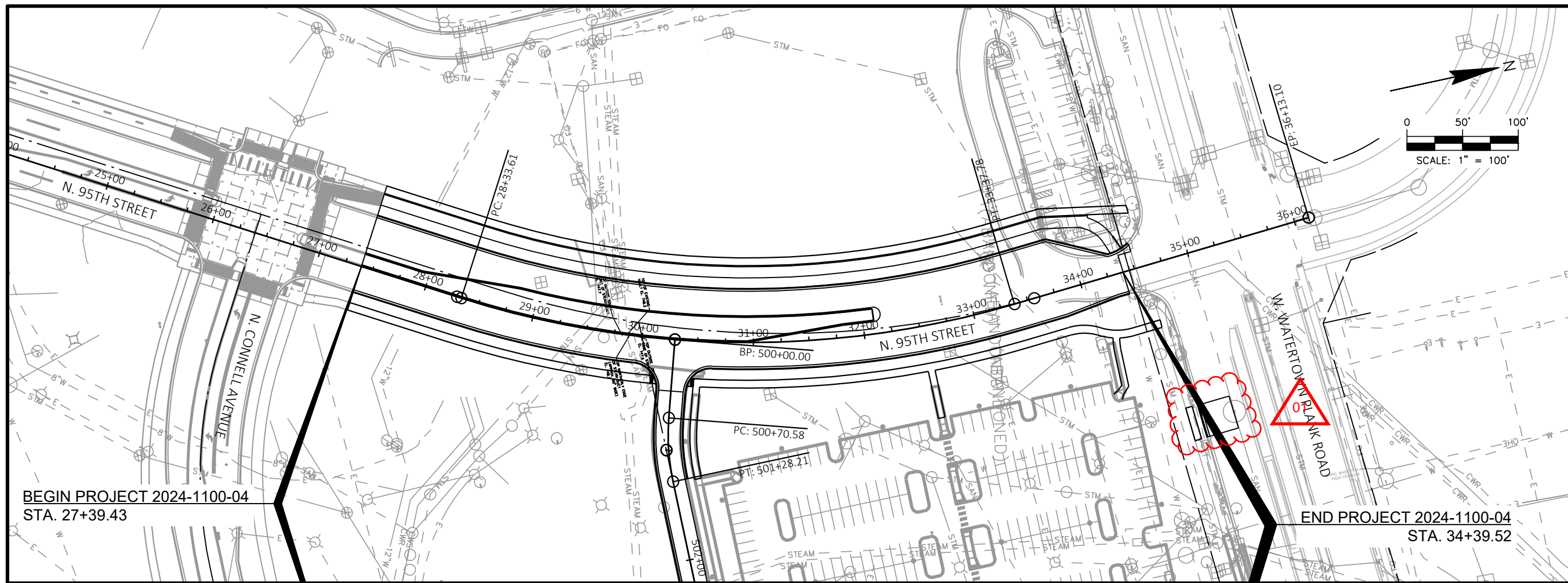
APPROVED BY: ACO

SCALE: 1 IN:100 FT

SHEET TITLE:

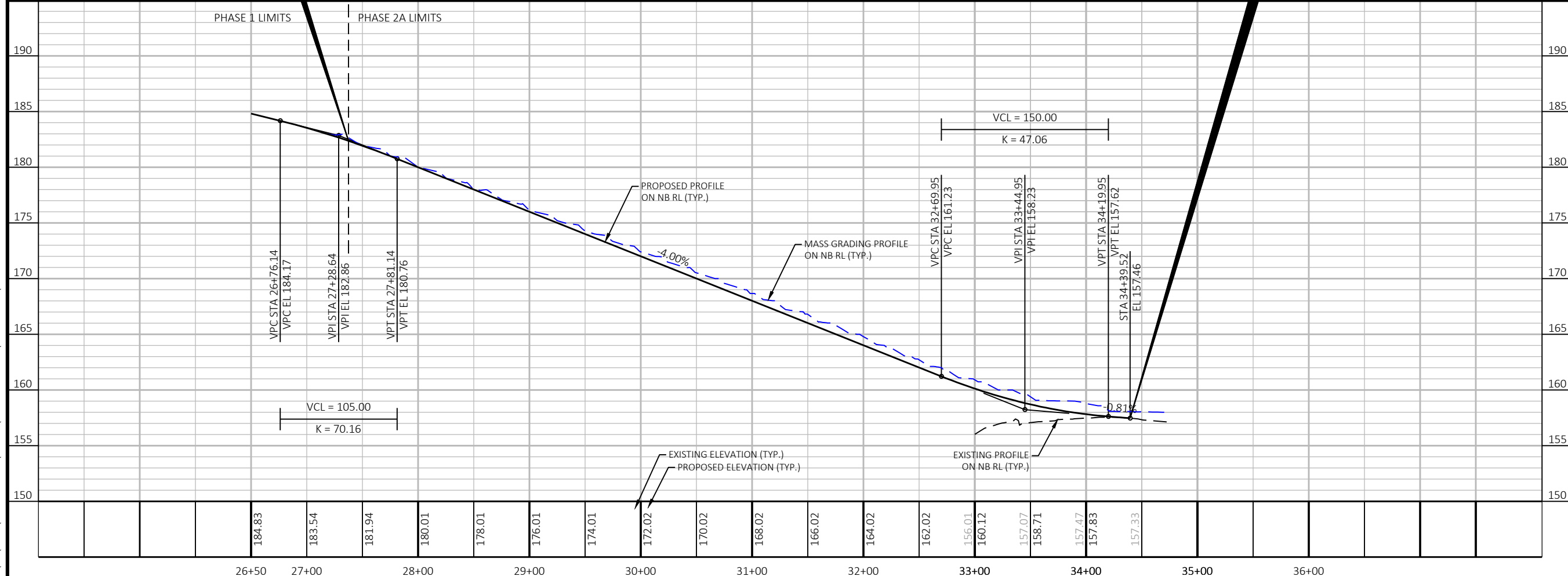
PLAN & PROFILE -
N. 95TH STREET

SHEET NUMBER:



BEGIN PROJECT 2024-1100-04
STA. 27+39.43

END PROJECT 2024-1100-04
STA. 34+39.52



April 30, 2026 7:52 AM X:\ML\2024\20241100-04\DESIGN\TRANSPORTATION\SHEETS\PLAN\050101_PP-95TH.DWG