



Public Parking Entry View - Wauwatosa Ave



T 414.220.9640
751 N Jefferson St.
Suite 200
Milwaukee, WI 53202

CONSULTANTS:

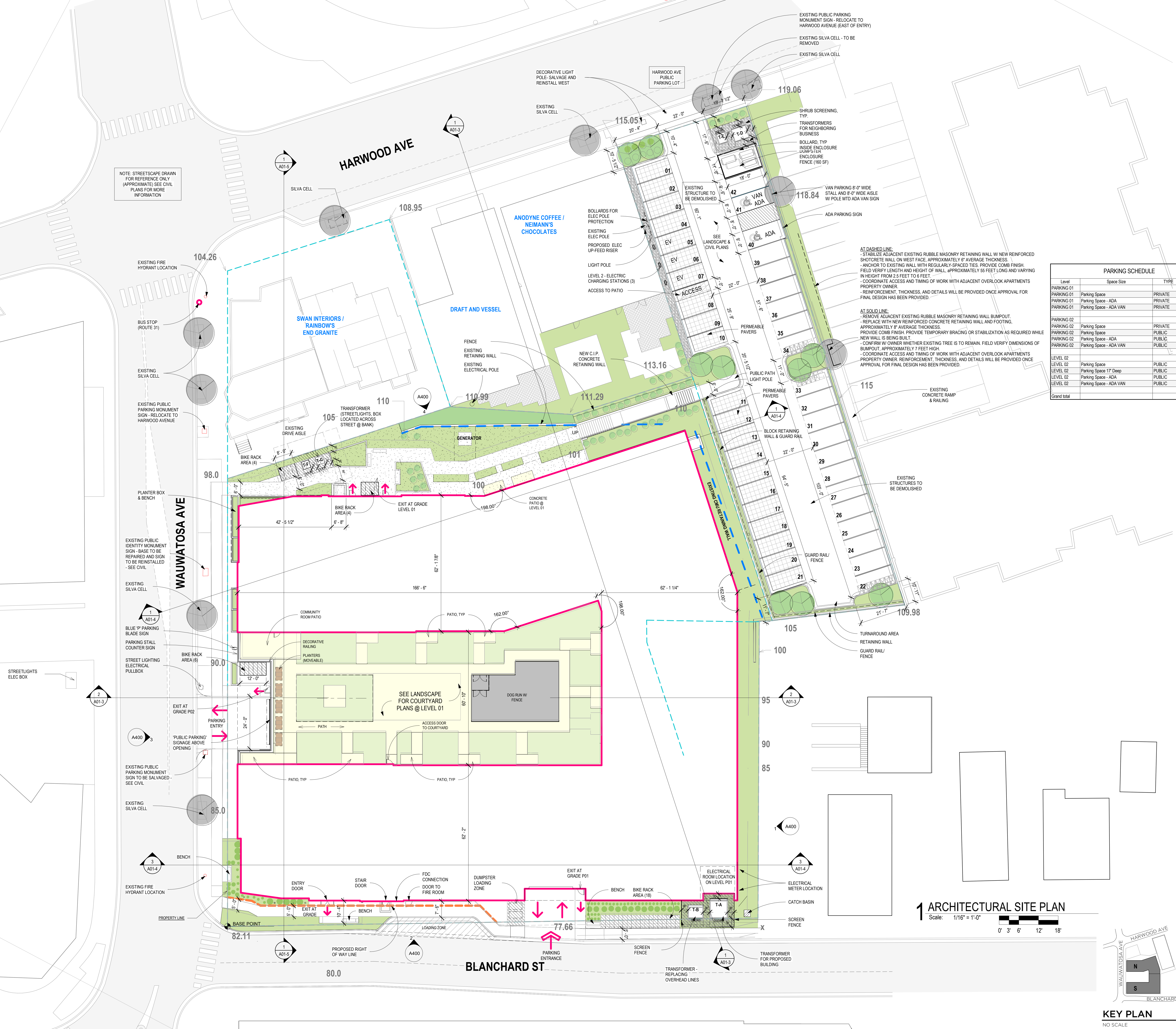
NOT FOR CONSTRUCTION
THESE DRAWINGS ARE RELEASED FOR
DESIGN DEVELOPMENT PURPOSES
ONLY. THEY ARE NOT TO BE USED FOR
REGULATORY APPROVAL, PERMIT, OR
CONSTRUCTION PURPOSES.

HARLOW AND HEM
7460 BLANCHARD ST. WAUWATOSA, WI 53213; Tax Key ID 370-0324-001
7463 HARWOOD AVE. WAUWATOSA, WI 53213; Tax Key ID 370-0359-000
BLANCHARD ST PUBLIC PARKING LOTS, WAUWATOSA, WI
Tax Key IDs: 3700362000, 3700323000, 3700337001
SHEET TITLE:
ARCHITECTURAL SITE PLAN

REVISIONS:

SCALE	VARIES
PROJECT NUMBER	230702
SET TYPE	DRB 05
DATE ISSUED	05/27/2025
SHEET NUMBER	A020

NOTE: STREETScape DRAWN FOR REFERENCE ONLY (APPROXIMATE) SEE CIVIL PLANS FOR MORE INFORMATION

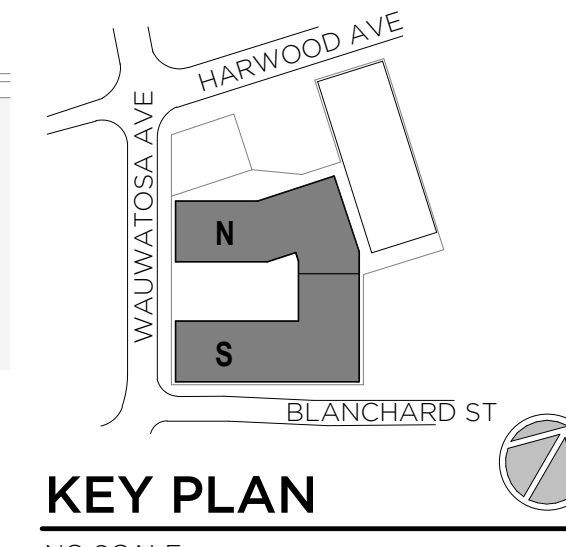


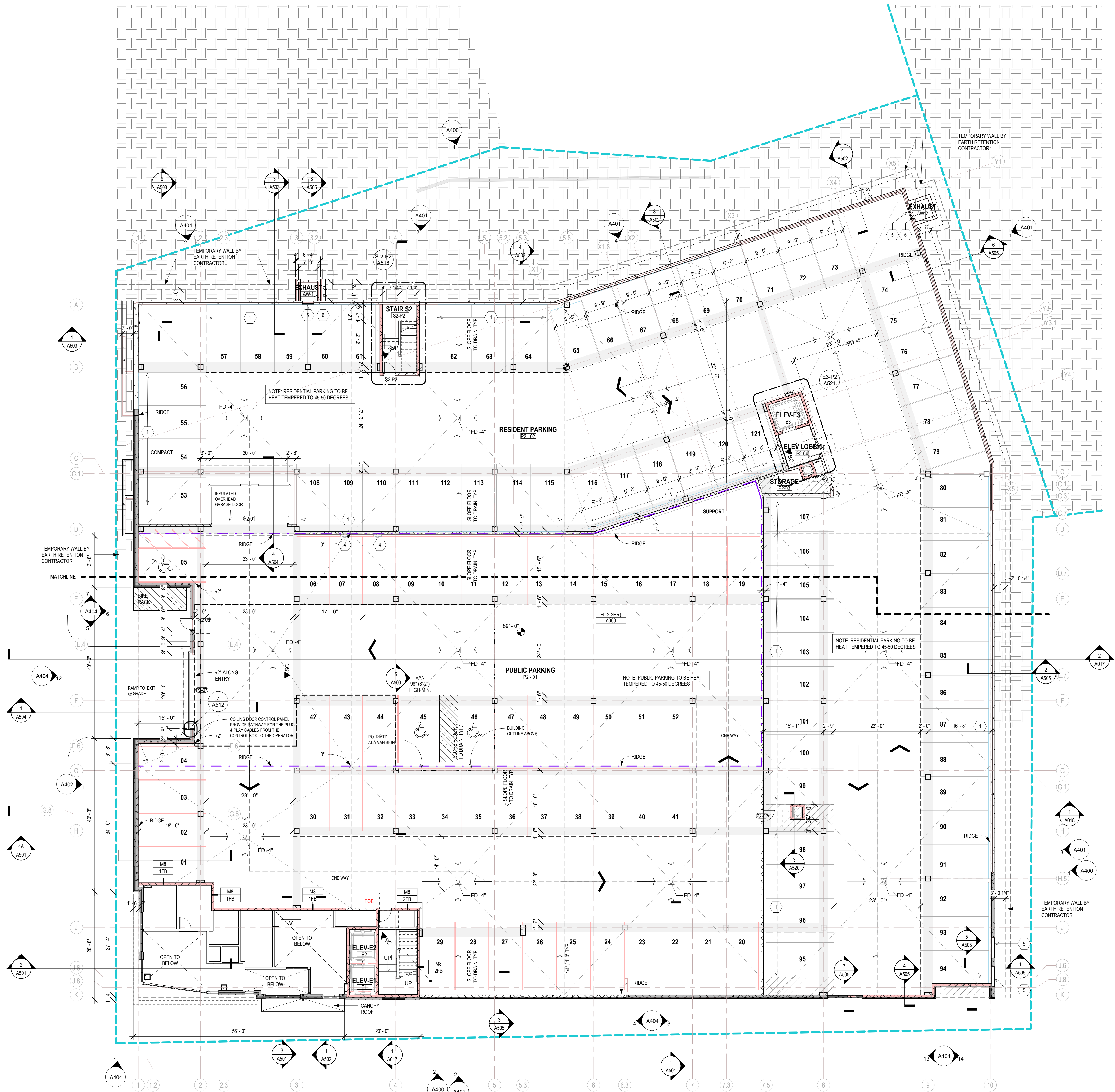
PARKING SCHEDULE			
Level	Space Size	TYPE	#
PARKING 01			
PARKING 01	Parking Space	PRIVATE	113
PARKING 01	Parking Space - ADA	PRIVATE	5
PARKING 01	Parking Space - ADA VAN	PRIVATE	1
			119
PARKING 02			
PARKING 02	Parking Space	PRIVATE	69
PARKING 02	Parking Space	PUBLIC	49
PARKING 02	Parking Space - ADA	PUBLIC	2
PARKING 02	Parking Space - ADA VAN	PUBLIC	1
			121
LEVEL 02			
LEVEL 02	Parking Space	PUBLIC	1
LEVEL 02	Parking Space 17' Deep	PUBLIC	39
LEVEL 02	Parking Space - ADA	PUBLIC	1
LEVEL 02	Parking Space - ADA VAN	PUBLIC	1
			42
Grand total			282

AT DASHED LINE:
- STABILIZE ADJACENT EXISTING RUBBLE MASONRY RETAINING WALL W/ NEW REINFORCED SHOTCRETE WALL ON WEST FACE, APPROXIMATELY 6' AVERAGE THICKNESS.
- ANCHOR TO EXISTING WALL WITH REGULARLY SPACED TIES. PROVIDE COMB FINISH. FIELD VERIFY LENGTH AND HEIGHT OF WALL, APPROXIMATELY 55 FEET LONG AND VARYING IN HEIGHT FROM 2.5 FEET TO 6 FEET.
- COORDINATE ACCESS AND TIMING OF WORK WITH ADJACENT OVERLOOK APARTMENTS PROPERTY OWNER.
- REINFORCEMENT, THICKNESS, AND DETAILS WILL BE PROVIDED ONCE APPROVAL FOR FINAL DESIGN HAS BEEN PROVIDED.

AT SOLID LINE:
- REMOVE ADJACENT EXISTING RUBBLE MASONRY RETAINING WALL BUMP-OUT.
- REPLACE WITH NEW REINFORCED CONCRETE RETAINING WALL AND FOOTING, APPROXIMATELY 8' AVERAGE THICKNESS.
- PROVIDE COMB FINISH. PROVIDE TEMPORARY BRACING OR STABILIZATION AS REQUIRED WHILE NEW WALL IS BEING BUILT.
- CONFIRM W/ OWNER WHETHER EXISTING TREE IS TO REMAIN. FIELD VERIFY DIMENSIONS OF BUMP-OUT, APPROXIMATELY 7 FEET HIGH.
- COORDINATE ACCESS AND TIMING OF WORK WITH ADJACENT OVERLOOK APARTMENTS PROPERTY OWNER. REINFORCEMENT, THICKNESS, AND DETAILS WILL BE PROVIDED ONCE APPROVAL FOR FINAL DESIGN HAS BEEN PROVIDED.

1 ARCHITECTURAL SITE PLAN
Scale: 1/16" = 1'-0"





NEW WORK PLAN LEGEND		
	MASONRY PARTITION, SEE PARTITION TYPES FOR DETAILS	M8 UNLESS NOTED OTHERWISE (U.N.O.)
	STUD PARTITION (WITHIN UNITS AT TYPE III B CONSTRUCTION), SEE PARTITION TYPES FOR DETAILS, TYPE	W3 UNLESS NOTED OTHERWISE (U.N.O.)
	STUD PARTITIONS AT TYPE IA CONSTRUCTION, SEE WALL TAGS & PARTITION TYPES FOR DETAILS	A3 UNLESS NOTED OTHERWISE (U.N.O.)
	WOOD STUD PARTITION AT TYPE III B CONSTRUCTION, SEE PARTITION TYPES FOR DETAILS, TYPE	PW5 UNLESS NOTED OTHERWISE (U.N.O.)
	SECURITY CAMERA: TRIANGLE REPRESENTS DIRECTION OF VIEW. COORDINATE LOCATION AND DEVICE WITH OWNER.	-1FP.A UNLESS NOTED OTHERWISE (U.N.O.)

- GENERAL FLOOR PLAN NOTES TO CONTRACTOR**
- THIS DRAWING IS FURTHER SUPPORTED BY INFORMATION CONTAINED IN THE SPECIFICATION MANUAL.
 - THE CIVIL, STRUCTURAL, MECHANICAL, ELECTRICAL, PLUMBING, FIRE PROTECTION, AUDIO-VISUAL, AND SECURITY DRAWINGS ARE SUPPLEMENTARY TO THE ARCHITECTURAL DRAWINGS. IT SHALL BE THE RESPONSIBILITY OF THE CONTRACTOR TO COORDINATE THE INFORMATION CONTAINED IN ALL THE DRAWINGS BEFORE THE INSTALLATION OF ALL WORK.
 - DO NOT SCALE DRAWINGS. CONTRACTOR TO VERIFY ALL CONDITIONS AND DIMENSIONS AT THE JOB SITE PRIOR TO COMMENCING CONSTRUCTION.
 - FLOOR ELEVATIONS ARE TO THE TOP OF THE SUB-FLOOR MATERIAL, UNLESS OTHERWISE NOTED.
 - CONTRACTORS SHALL JOINTLY PROVIDE AND INSTALL ALL STIFFENERS, BRACING, BACKING PLATES, WALL BLOCKING AND SUPPORTING BRACKETS REQUIRED FOR THE INSTALLATION OF CASEWORK, TOILET ACCESSORIES, PARTITIONS, MILLWORK, AND ALL WORK MOUNTED OR SUSPENDED BY ALL TRADES.
 - PROVIDE PAINTED NUMBERS AND 2" STRIPES FOR EACH PARKING STALL AS SHOWN. PROVIDE STRIPING WHERE SHOWN ON DRAWINGS.

NEW WORK PLAN KEY NOTES	
SEE PROJECT GENERAL CONDITIONS, GENERAL INFORMATION ON SHEET A001 AND SELECTIVE DEMOLITION, CUTTING AND PATCHING SPECIFICATIONS THAT ARE USED IN ASSOCIATION WITH THESE NOTES.	
NEW WORK PLAN KEY NOTES APPLY TO ALL NEW WORK DRAWINGS AND MAY NOT BE USED ON EVERY SHEET.	
1	WALL MTD BIKE HOOK AT EACH STALL, TYP.
2	BOLLARD, TYP.
3	STRUCTURAL COLUMN, COORDINATE WITH STRUCTURAL DRAWINGS
4	WALL MOUNTED ELECTRIC CHARGING STATIONS, MODEL PLUG20 UNIVERSAL PLUS
5	LOUVER - VERIFY SIZE. SEE MECHANICAL DESIGN BUILD CONTRACTOR
6	AREA WELL EXHAUST - VERIFY SIZE/LOCATION WITH MECHANICAL DESIGN BUILD CONTRACTOR
9	RESIDENT STORAGE LOCKERS AS SHOWN. CONSTRUCT WALLS WITH ROTATED 2X4 STUD AND 1/2" PLYWOOD ON ONE SIDE UP TO 7' HEIGHT AND WIRE FENCE ABOVE THAT. FOR THE DOOR PROVIDE 1/2" PLYWOOD ON BOTH SIDES WITH HEAVY DUTY STRAP AND HASP. SEE DETAIL 10A102
10	FIBERGLASS WINDOW ASSEMBLY, SEE ELEVATIONS AND SCHEDULE
11	FUR WALL AT THIS UNIT ON LEVEL 01 ONLY TO AVOID PLUMBING/PRECAST BEAM CONFLICT, ADJUST BATHROOM FRAMING ACCORDINGLY.

NEW WORK PLAN LEGEND - DRAINAGE	
	ROOF DRAIN
	OVERFLOW DRAIN
	F.D. FLOOR DRAIN
	DIRECTION OF DOWNWARD DRAINAGE FLOW
	INDICATES TOPPING THICKNESS BELOW FLOOR LEVEL
	INDICATES TOPPING THICKNESS ABOVE ROOF DECK

T 414.220.9640
751 N Jefferson St.
Suite 200
Milwaukee, WI 53202

CONSULTANTS:

NOT FOR CONSTRUCTION
THESE DRAWINGS ARE RELEASED FOR DESIGN DEVELOPMENT PURPOSES ONLY. THEY ARE NOT TO BE USED FOR REGULATORY APPROVAL, PERMIT, OR CONSTRUCTION PURPOSES.

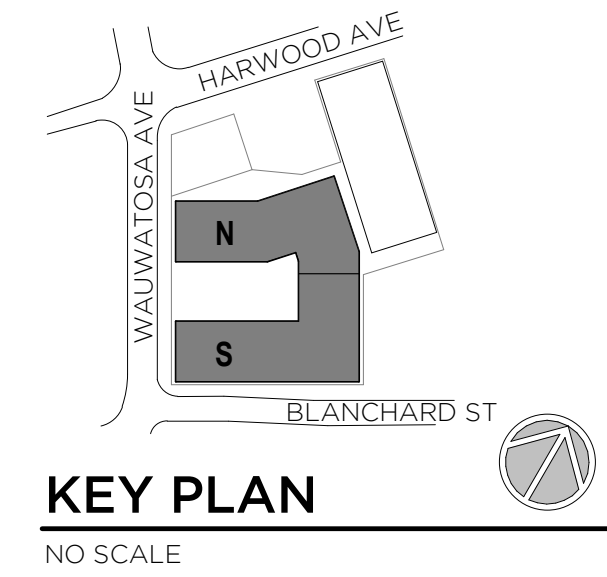
HARLOW AND HEM
7460 BLANCHARD ST., WAUWATOSA, WI 53213 Tax Key ID 370-0324-001
7463 HARWOOD AVE., WAUWATOSA, WI 53213 Tax Key ID 370-0359-000
BLANCHARD ST PUBLIC PARKING LOTS, WAUWATOSA, WI
Tax Key IDs: 3700362000, 3700323000, 3700337001

REVISIONS:

SCALE	VARIES
PROJECT NUMBER	230702
SET TYPE	DRB 05
DATE ISSUED	05/27/2025
SHEET NUMBER	A200.2

SHEET TITLE:
NEW WORK PLAN - PARKING LEVEL 02

1 NEW WORK - PARKING 02
Scale: 3/32" = 1'-0"
0' 2' 4' 8' 12'





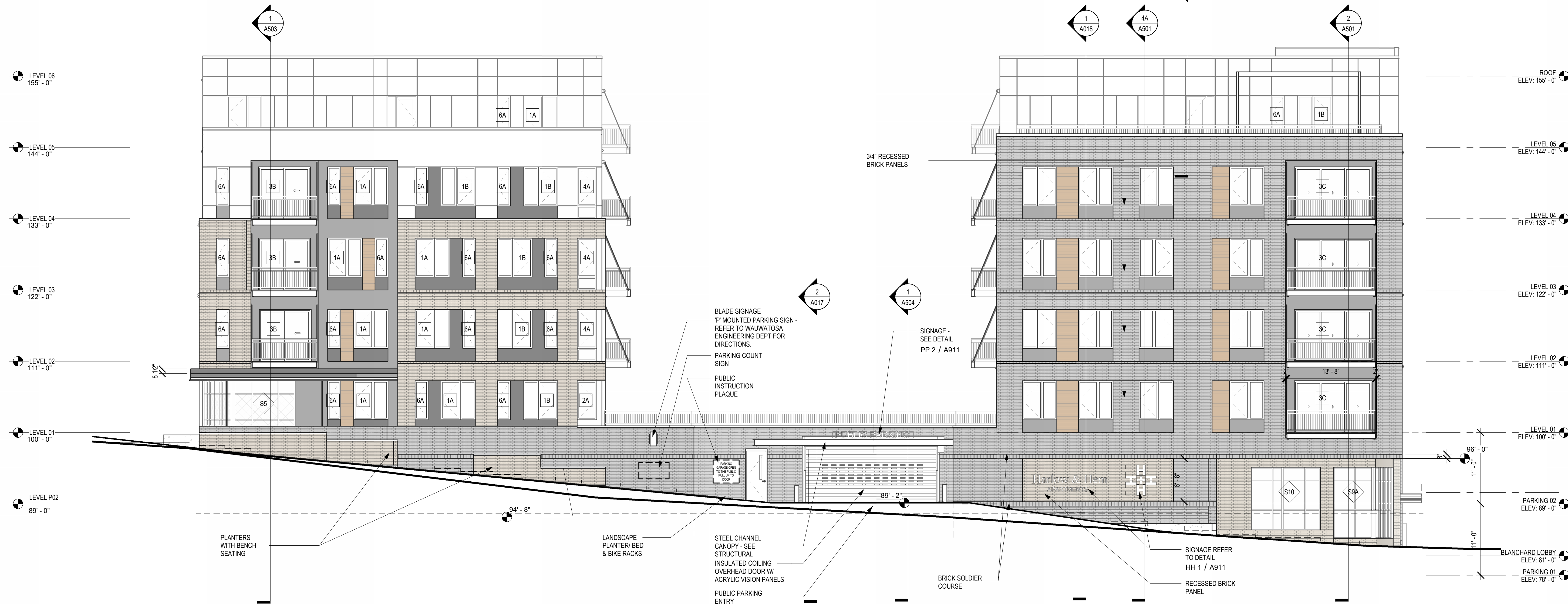
T 414.220.9640
751 N Jefferson St.
Suite 200
Milwaukee, WI 53202

CONSULTANTS:

© COPYRIGHT 2023, CONTINUUM ARCHITECTS + PLANNERS S.C.













2 SOUTH WING - SOUTH ELEVATION
Scale: 1/8" = 1'-0"



1 WEST ELEVATION - WAUWATOSA AVE
Scale: 1/8" = 1'-0"



EXTERIOR MATERIAL LEGEND	
	FIBER CEMENT HORIZONTAL SIDING SMOOTH LAP SIDING ALTERNATING SIZES (8.25" / 6.25" / 5.25") SEE ENLARGED ELEVATION FOR TYP. PATTERN METAL TRIM SYSTEM W/ EXPOSED FASTENERS COLOR: NIGHT GRAY/LIGHT MIST BASIS OF DESIGN - JAMES HARDIE COLLECTION - OR EQUAL
	FIBER CEMENT PANEL SIDING SMOOTH TEXTURED PANELS METAL TRIM SYSTEM W/ EXPOSED FASTENERS FIELD PAINT TO MATCH
	FIBER CEMENT PANEL SIDING SMOOTH TEXTURED PANELS METAL TRIM SYSTEM W/ EXPOSED FASTENERS FIELD PAINT TO MATCH
	FIBER CEMENT PANEL SIDING SMOOTH TEXTURED PANELS METAL TRIM SYSTEM W/ EXPOSED FASTENERS FIELD PAINT TO MATCH
	ALUMINUM SIDING COLOR: (WOOD PATTERN), SEE SPEC BASIS OF DESIGN - LONGBOARD ALUMINUM SIDING
	MASONRY FACE BRICK 01, MODULAR SIZE (2-1/4"H x 7-5/8"L x 3-5/8"D) COLOR: MANGANESE IRONSPOT, SMOOTH BASIS OF DESIGN - ENDICOTT BRICK - OR EQUAL
	CONCRETE MASONRY (CB-01) COLOR: MIDNIGHT GROUND BASIS OF DESIGN - CONDOVA STONE BY ECHELOEN MASONRY - OR EQUAL
	MASONRY FACE BRICK 02, MODULAR SIZE (2-1/4"H x 7-5/8"L x 3-5/8"D) COLOR: LIGHT GREY, VELOUR TEXTURE BASIS OF DESIGN - ENDICOTT BRICK - OR EQUAL
	CONCRETE CAST-IN PLACE CONCRETE
	SHEET METAL FLASHING GALVALUM SHEET METAL FLASHING AT BASE OF BUILDING

GENERAL EXTERIOR ELEVATION NOTES TO CONTRACTOR	
--	--

GENERAL EXTERIOR ELEVATION NOTES TO CONTRACTOR

NOT FOR CONSTRUCTION
THESE DRAWINGS ARE RELEASED FOR
DESIGN DEVELOPMENT PURPOSES
ONLY. THEY ARE NOT TO BE USED FOR
REGULATORY APPROVAL, PERMIT, OR
CONSTRUCTION PURPOSES.

HARLOW AND HEM
7460 BLANCHARD ST., WAUWATOSA, WI 53213; Tax Key ID 370-0324-001
7463 HARWOOD AVE., WAUWATOSA, WI 53213; Tax Key ID 370-0359-000
BLANCHARD ST PUBLIC PARKING LOTS, WAUWATOSA, WI
Tax Key IDs: 3700362000, 3700323000, 3700337001
SHEET TITLE: EXTERIOR ELEVATIONS

REVISIONS:

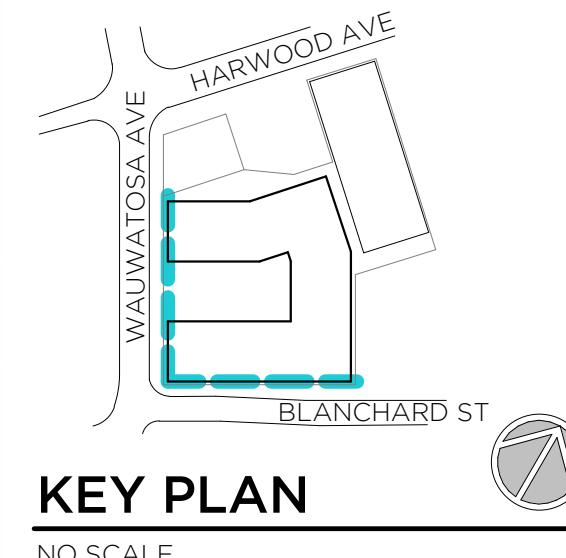
SCALE VARIES

PROJECT NUMBER 230702

SET TYPE DRB 05

DATE ISSUED 05/27/2025

SHEET NUMBER **A402**



MOTOR SPECIFICATIONS:

3 HP motor to include an open drip proof motor, operated by a motor mounted Variable Frequency Drive and separate external NEMA 4 plastic enclosure control box. Worm gear reduction with built-in inertia safety brake and electrical solenoid brake with auxiliary chain operation. UL listed motor drives and control panel. Absolute encoder limit with power failure memory built-in. Guide mounted plug and play connections for sensors. High voltage leads pre-wired to motor and control panel. On board LCD screen to provide setup menu and troubleshooting messages. Class T fuse protection ready. Three button push station on panel with five button navigation for LCD setup menu.

CURRENT CHARACTERISTICS:

460 V 3 PH 60 HZ 1.3 FLA

Electrical current **must** be verified in writing before job is released for manufacture; current verified and found correct. Operator bracket bracing required, unless operator is wall mounted. Signed:

ELECTRICAL EQUIPMENT LIST:

- 1 - APEX encoder cable extension
- 1 - Pair of Telco failure and function photo eyes.
- 1 - Telco failure and function light curtain.
- 1 - Brink Alert Kit w/ DSK 5-2.
- 1 - Motor Heater.

BOTTOM BAR LOCKING:

None

QUANTITY:

(001)

MATERIAL & FINISH:

Front slat - Galv steel, phosphatized, CycleShield™ powder coating, color Verify powder

Back slat - Galv steel, phosphatized, CycleShield™ powder coating, color Verify powder

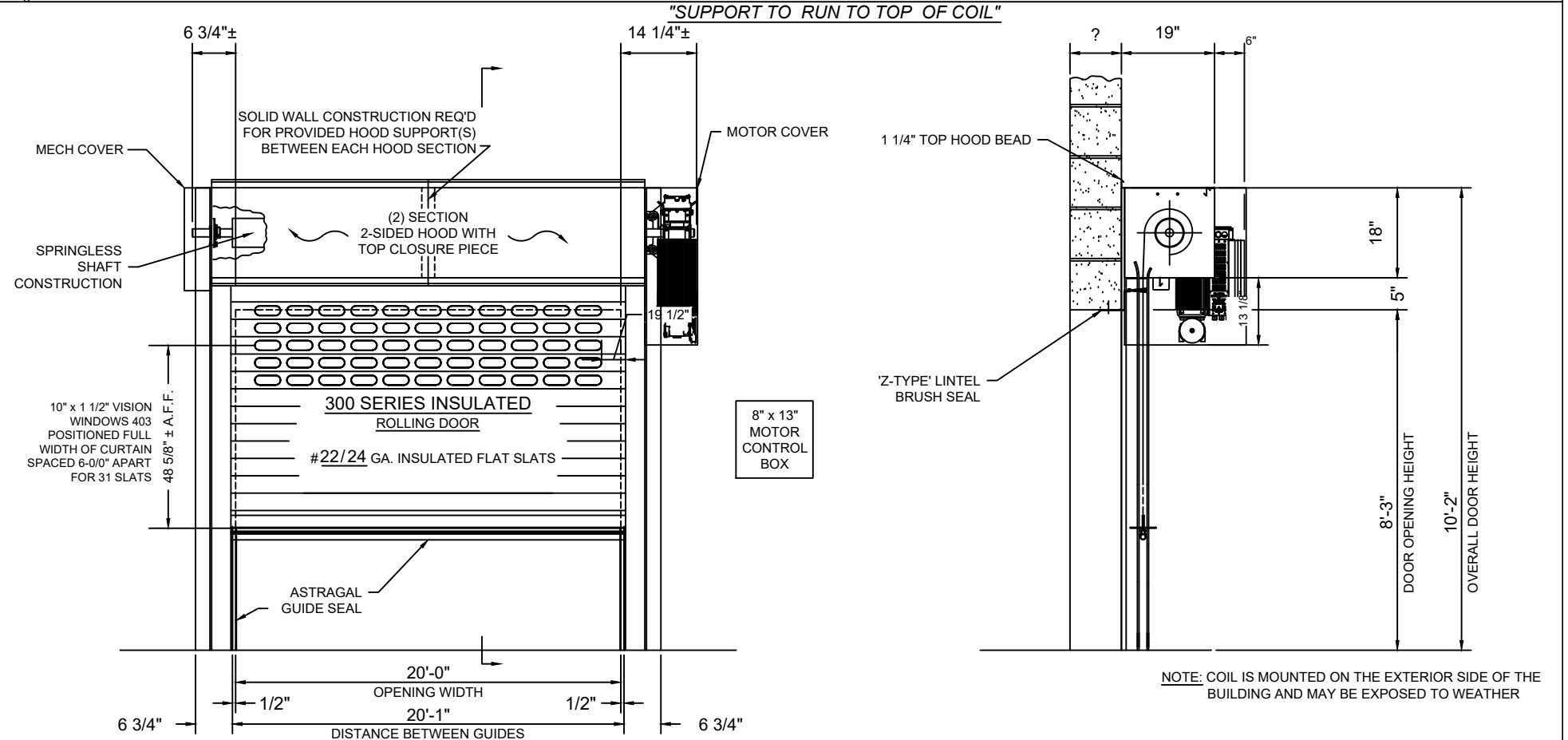
Bottom Bar - Struc steel, CycleShield™ powder coating, color Verify powder

Guides - Struc steel, CycleShield™ powder coating, color Verify powder

Hood - Galv steel, phosphatized, CycleShield™ powder coating, color Verify powder

Plain Steel - CycleShield™ powder coating, color Verify powder

This item includes a 500,000 cycle warranty



04-25-2025
MTRSTDV

PRODUCT CODE:

MFx 6F 24GC3

ELEVATION (COIL SIDE) AND SECTION VIEW

See drawing # E 2054297 001 B for guide detail.

MODEL #: EPI300

JOB #: (ALT 1)

DEALER*: CORNELLCOOKSON A.D.S.

CONTRACTOR:

ARCHITECT: CONTINUUM ARCHITECTS

CORNELL
innovative door solutions.

GFA MOTOR
OPERATED ROLLING DOOR

JOB: HARLOW & HEM APARTMENTS

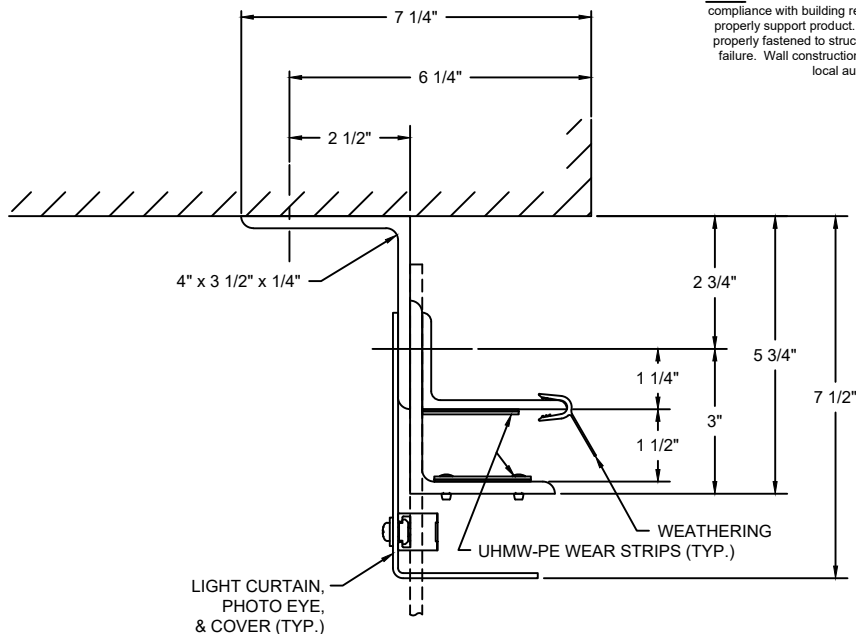
MILWAUKEE, WI

* "Dealer" refers to any purchaser, customer, or reseller of CornellCookson products, and not necessarily an authorized CornellCookson dealer.

--- ORIGINAL DRAWING 05/21/25 CHRISS

REVISION DATE BY

NOTE: Wall construction detail shown is for illustrative purposes only, does not imply compliance with building requirements, and must meet architectural specifications to properly support product. Products designed with wind load requirements must be properly fastened to structural members as specified in order to avoid catastrophic failure. Wall construction and closure installation shall be in accordance with the local authority having jurisdiction requirements.



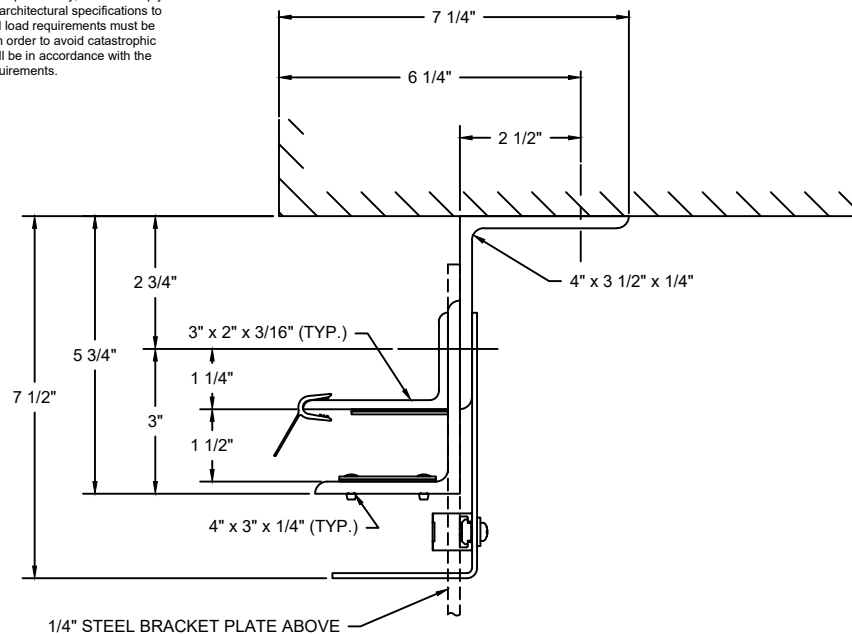
GA0735 - 5 3/4"

WALL FASTENERS:

AT 36" ON CENTER
 - Ø3/8" x 3-3/4" SIMPSON STRONG-BOLT 2,
 MIN. 1500 PSI GROUT FILLED CMU REQ'D
 MIN. EMBEDMENT DEPTH - 1-7/8"
 MIN. DISTANCE FROM VERTICAL JOINT- 1 3/8"

ASSEMBLY FASTENERS:

AT 24" ON CENTER
 - Ø3/8-16 x 1-1/2" HEX HEAD CAP SCREW, GR. 5
 - HEX HEAD NUT, GR. 5
 - HARDENED FLAT WASHERS



GA0735 - 5 3/4"

WALL FASTENERS:

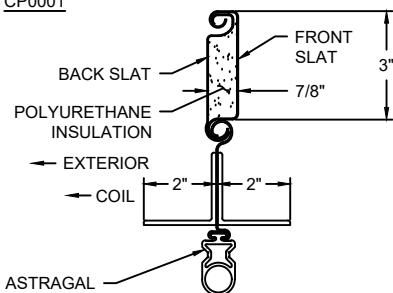
AT 36" ON CENTER
 - Ø3/8" x 3-3/4" SIMPSON STRONG-BOLT 2,
 MIN. 1500 PSI GROUT FILLED CMU REQ'D
 MIN. EMBEDMENT DEPTH - 1-7/8"
 MIN. DISTANCE FROM VERTICAL JOINT- 1 3/8"

ASSEMBLY FASTENERS:

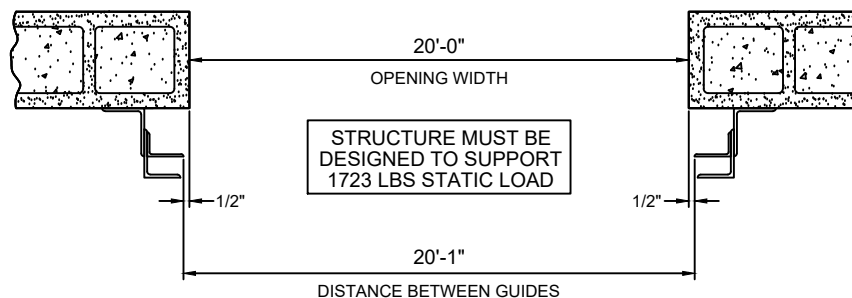
AT 24" ON CENTER
 - Ø3/8-16 x 1-1/2" HEX HEAD CAP SCREW, GR. 5
 - HEX HEAD NUT, GR. 5
 - HARDENED FLAT WASHERS

BOTTOM BAR / SLAT DETAIL

CP0001



PLAN OF OPENING



INSTALLERS NOTE:

MAINTAINING FACTORY SET GUIDE GAPS IS CRITICAL TO THE PROPER OPERATION OF THE DOOR AND IT'S ABILITY TO WITHSTAND THE DESIGNED WINDLOAD!

ENDLOCK DETAIL

CP1420 GALVANIZED ENDLOCKS ON ALTERNATING SLATS WITH 2 x 1/4" RIVETS



CP1420

11-15-2024	PRODUCT CODE:
G3DH1_575	MFX 6F 24GC3

#	REVISION	DATE	BY
---	ORIGINAL DRAWING	05/21/25	CHRISS



* "Dealer" refers to any purchaser, customer, or reseller of CornellCookson products, and not necessarily an authorized CornellCookson dealer.

INSULATED HSHC DOOR GUIDE ASSEMBLY, 5 3/4" PACKOFF
 JOB: HARLOW & HEM APARTMENTS
 MILWAUKEE, WI

MODEL #:	EPI300	JOB #:	(ALT 1) E 2054297 001 B
DEALER:	CORNELLCOOKSON A.D.S.		
CONTRACTOR:			
ARCHITECT:	CONTINUUM ARCHITECTS		