

MEADOWBROOK CHURCH

ADDITION & RENOVATION

1025 N. 70TH STREET, WAUWATOSA, WI 53213



209 south water street, milwaukee, wisconsin 53204 t 414 359 3060
2310 crossroads drive, suite 2000, madison, wisconsin 53718 t 608 240 9900
1970 main street, suite 201, sarasota, florida 34236 t 941 444 8845
311 canyon wren drive, buda, texas 78610 t 512 649 5627

SHEET INDEX

GENERAL

000 TITLE SHEET

CIVIL

C100 EXISTING CONDITIONS PLAN
C101 SITE DEMOLITION AND EROSION
C200 SITE LAYOUT PLAN
C300 SITE GRADING AND UTILITY PLAN

ARCHITECTURAL

A075 CONSTRUCTION STAGING PLAN
A200 LOWER LEVEL FLOOR PLAN
A201 FIRST FLOOR PLAN
A400 EXTERIOR ELEVATIONS

PROJECT INFORMATION

PROJECT DATE: 06-07-2023
PRA PROJECT NUMBER: 200239-04
DRAWING SET: CONDITIONAL USE REVIEW

APPLICABLE CODES AND ZONING

2018 WISCONSIN COMMERCIAL BUILDING CODE (SPS 361-366)
2015 INTERNATIONAL EXISTING BUILDING CODE
2015 INTERNATIONAL BUILDING CODE
ASSEMBLY OCCUPANCY, GROUP A-3

ZONING: CITY OF WAUWATOSA ORDINANCES

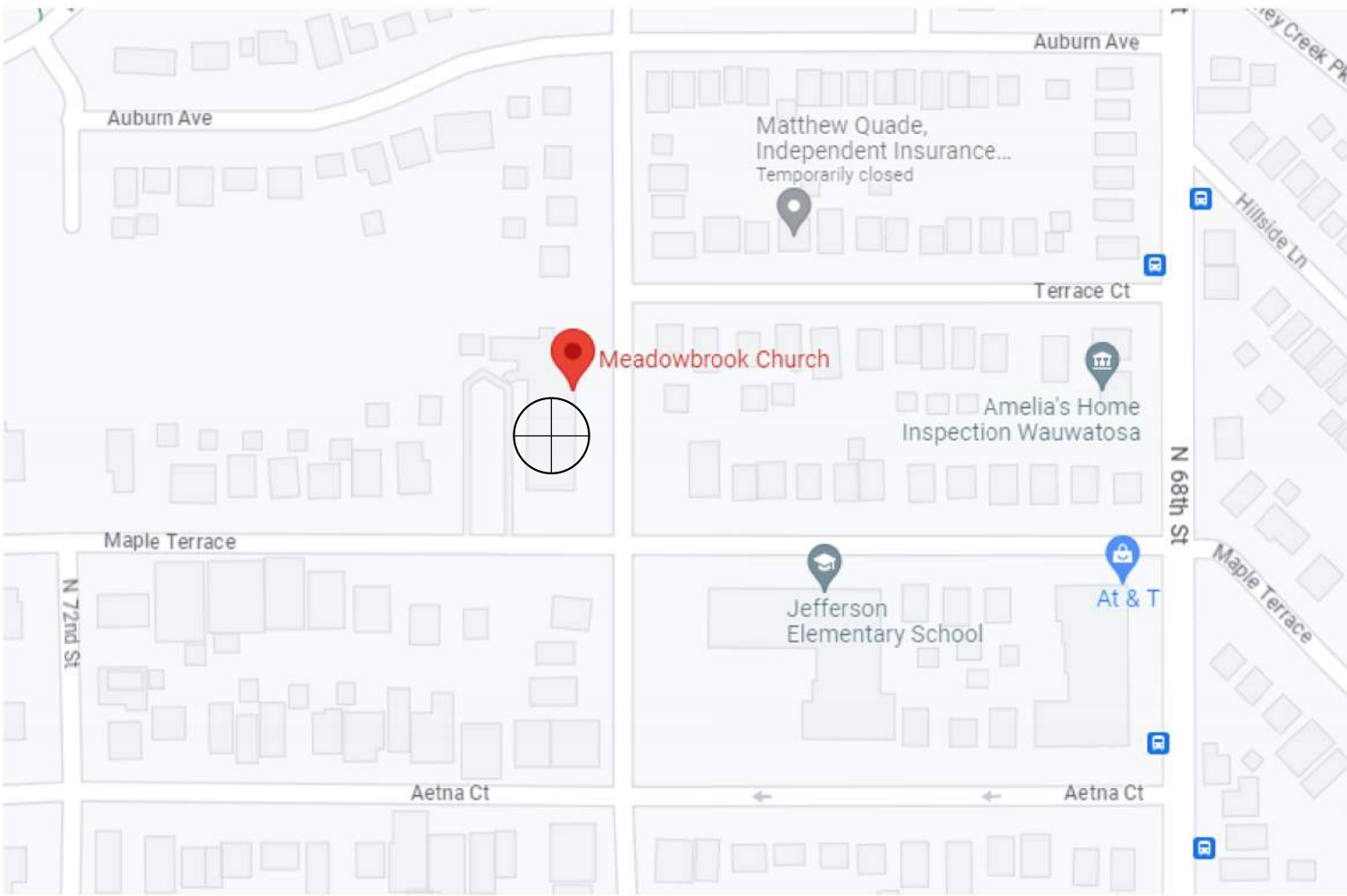
CONSTRUCTION CLASSIFICATION

NEW CONSTRUCTION
TYPE OF CONSTRUCTION, UNPROTECTED, TYPE IIIB - NON-SPRINKLERED

BUILDING AREA

OVERALL FOOTPRINT	10,597 SF
EXISTING	
LOWER LEVEL	10,507 SF
FIRST FLOOR	10,634 SF
EXISTING TOTAL	21,141 SF
ADDITIONS	
LOWER LEVEL	1,297 SF
FIRST FLOOR	1,297 SF
ADDITION TOTAL	2,593 SF
BUILDING TOTAL	23,734 SF
ALTERATIONS	
LOWER LEVEL	8,373 SF
FIRST FLOOR	9,488 SF
ALTERATION TOTAL	17,861 SF

PROJECT LOCATION



PROJECT TEAM

CONSTRUCTION MANAGER

CATALYST CONSTRUCTION

TEL(414) 727-6840

CIVIL

MSA PROFESSIONAL SERVICES, INC

TEL(608) 242-7779

LANDSCAPE

MSA PROFESSIONAL SERVICES, INC

TEL(608) 242-7779

STRUCTURAL

raSMITH

TEL(262) 781-1000

PLUMBING

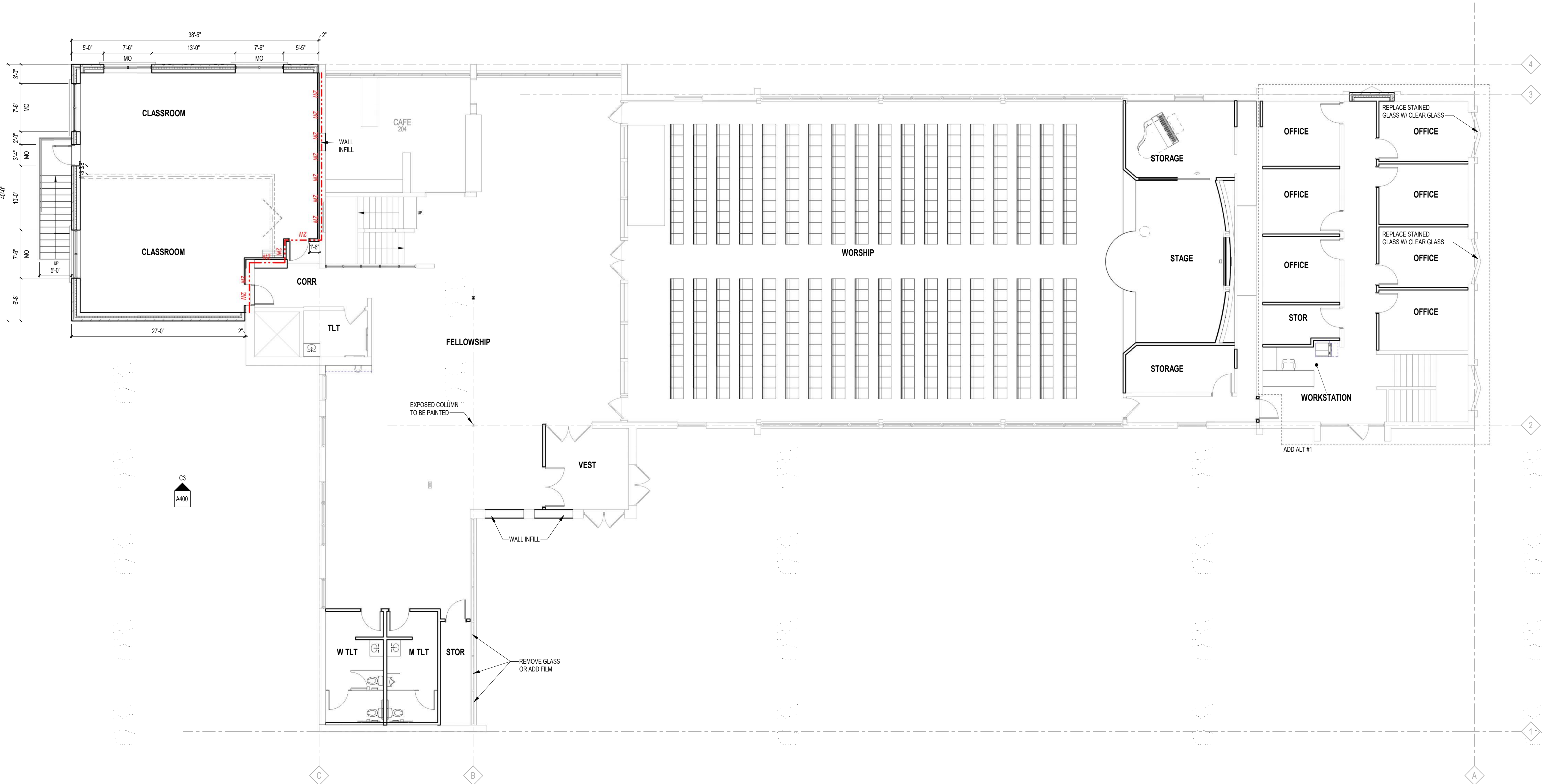
DESIGN / BUILD

MECHANICAL

DESIGN / BUILD

ELECTRICAL

DESIGN / BUILD



FLOOR PLAN SYMBOLS LEGEND

	EXISTING WALLS TO REMAIN		NEW WALL/PARTITION
	EXISTING DOOR TO REMAIN		NEW DOOR
	SECTION REFERENCE		EXISTING DOOR RECEIVING NEW WORK - REFER TO DOOR SCHEDULE
	DTL SH1		DETAIL REFERENCE
	DTL SH2		EQUIPMENT
	INTERIOR ELEVATION		WINDOW TYPE
	FLOOR PLAN NOTE		WALL/PARTITION TYPE
	CONSTRUCTION LIMITS		FLOOR DRAIN - PITCH FLOOR TO DRAIN
	TWO HOUR RATED FIRE WALL		FLOOR DRAIN
	TWO HOUR RATED FIRE WALL		SEMI-RECESSED FIRE EXTINGUISHER

FLOOR PLAN GENERAL NOTES

- A. DIMENSIONS ON FLOOR PLAN ARE BASED ON FACE OF FINISHED WALL TO FACE OF FINISHED WALL (NOMINAL).
- B. VERIFY ALL DIMENSIONS AND CONDITIONS AT JOB SITE. PORTIONS OF EXISTING CONSTRUCTION MAY HAVE BEEN REMOVED BY OWNER.
- C. MAINTAIN CONTINUOUS UTILITY SERVICE TO ALL SPACES IN THE BUILDING NOT AFFECTED BY THIS WORK. COORDINATE WITH OWNER ANY DISRUPTION IN SERVICES REQUIRED TO PERFORM WORK OR TO MODIFY EXISTING PIPING, DUCTWORK OR ANY ASSOCIATED EQUIPMENT.
- D. CONTRACTOR TO VERIFY FLOOR TO FLOOR HEIGHTS.

GYPSUM BOARD PARTITIONS GENERAL NOTES

- A. ALL GYPSUM BOARD PARTITIONS SHALL BE (GG) UNLESS OTHERWISE NOTED ON FLOOR PLAN.
- B. GYPSUM BOARD PARTITION DIMENSIONS ON FLOOR PLAN ARE BASED ON FACE OF FINISHED PARTITION TO FACE OF FINISHED PARTITION (NOMINAL).
- C. REFER TO GYPSUM BOARD SPECIFICATION FOR LOCATION AND TYPE(S) OF GYPSUM BOARD MATERIAL REQUIRED.
- D. PROVIDE FIRE RATED GYPSUM BOARD AT ALL FIRE RATED PARTITIONS.
- E. SEAL ALL WALL PENETRATIONS AT PERIMETER AND FIRESTOP ALL FIRE RATED PARTITIONS.
- F. EXTEND ALL GYPSUM BOARD PARTITIONS FULL HEIGHT TO UNDERSIDE OF STEEL DECK ABOVE. AT METAL DECK CONSTRUCTION ABOVE PROVIDE SLIP JOINT BETWEEN TOP OF PARTITION AND UNDERSIDE OF METAL DECK / STRUCTURAL STEEL MEMBER ABOVE. REFER TO DETAIL.
- G. EXTEND GYPSUM BOARD PARTITIONS 1" ABOVE FINISH CEILING. REFER TO REFLECTED CEILING PLAN FOR PARTITIONS THAT EXTEND TO UNDERSIDE OF DECK ABOVE INDICATED WITH SHADED WALLS. AT METAL DECK CONSTRUCTION ABOVE PROVIDE SLIP JOINT BETWEEN TOP OF WALL AND UNDERSIDE OF METAL DECK / STRUCTURAL STEEL MEMBER ABOVE. REFER TO DETAIL.

MASONRY PARTITIONS GENERAL NOTES

- A. MASONRY PARTITIONS INDICATED WITH THE FOLLOWING HATCH PATTERN:
- B. ALL MASONRY PARTITIONS SHALL BE 8" CONCRETE BLOCK UNLESS OTHERWISE NOTED OR DIMENSIONED. REFER TO FLOOR PLAN FOR PARTITION THICKNESS.
- C. PROVIDE UL RATED CONCRETE BLOCK AT ALL FIRE RATED PARTITIONS.
- D. SEAL ALL WALL PENETRATIONS AT PERIMETER AND FIRESTOP ALL RATED PARTITIONS.
- E. EXTEND CONCRETE BLOCK PARTITIONS FULL HEIGHT TO UNDERSIDE OF STEEL DECK ABOVE (OR PRECAST PLANK ABOVE IF APPLICABLE). REFER TO DETAIL. PROVIDE HORIZONTAL MASONRY JOINT REINFORCEMENT AT 16" OC VERTICALLY. REFER TO STRUCTURAL DRAWINGS FOR VERTICAL REINFORCEMENT REQUIREMENTS.

MARK	ASSEMBLY DESCRIPTION
1A.1	MASONRY VENEER STUD WALL CONSISTING OF 4" FACE BRICK (EDIT FOR OTHER MATERIALS), AIR SPACE, 3" RIGID INSULATION, SPRAY APPLIED AIR AND VAPOR BARRIER SYSTEM ON 5/8" GYPSUM SHEATHING, 8" GALVANIZED COLD FORMED STEEL STUDS (REFER TO STRUCTURAL DRAWINGS FOR GAUGE) AND ONE LAYER 5/8" GYPSUM BOARD AT INTERIOR FACE. PROVIDE ADJUSTABLE MASONRY VENEER ANCHORS @ 16" EW. PROVIDE HORIZONTAL MASONRY JOINT REINFORCING @ 16" OC. PROVIDE CAVITY DRAINAGE MATERIAL, FLASHING, MASONRY EXPANSION AND CONTROL JOINTS. PROVIDE CAVITY WEEPSVENTS @ 24" OC. COMPARTMENTALIZE THE CAVITY AND PROVIDE CAVITY WEEPSVENTS AT TOP/BOTTOM OF CAVITY. REFER TO DETAIL XXXXXX.
32.1	

MARK	ASSEMBLY DESCRIPTION	FIRE RATING	UL	INSULATION
	6" STEEL STUDS @ 16" OC ONE LAYER 5/8" GYPSUM BOARD	--	--	--
	3-5/8" STEEL STUDS @ 16" OC ONE LAYER 5/8" GYPSUM BOARD	--	--	FULL WIDTH SOUND
GG0	3-5/8" STEEL STUDS @ 16" OC ONE LAYER 5/8" GYPSUM BOARD @ EACH FACE	--	--	3-1/2" SOUND
BL0	6" STEEL STUDS @ 16" OC ONE LAYER 5/8" GYPSUM BOARD @ EACH FACE	--	--	FULL WIDTH SOUND
DF1	2 x 4 WOOD STUDS @ 16" OC 1-LAYER 5/8" GYPSUM BOARD @ EACH FACE	1-HR	U305	--
GC0	7/8" STEEL FLOORING CHANNELS @ 16" OC ONE LAYER 5/8" GYPSUM BOARD	--	--	--
GG0	3-5/8" STEEL STUDS @ 16" OC ONE LAYER 5/8" GYPSUM BOARD	--	--	--
QE1	2-1/2" STEEL C-H STUDS @ 24" OC 1-LAYER 1" GYPSUM BOARD LINER PANEL @ INTERIOR FACE 1-LAYER 5/8" GYPSUM BOARD @ EXTERIOR FACE	1-HR	U415 (A)	--
SS0	4" CONCRETE MASONRY UNITS	--	--	--
SNO	8" CONCRETE MASONRY UNITS	--	--	--
SS0	12" CONCRETE MASONRY UNITS	--	--	--
VA0	ONE LAYER DIRECT BONDED 5/8" GYPSUM BOARD	--	--	--

MARK	DESCRIPTION

KEY PLAN

NOT FOR CONSTRUCTION
© 2023 PLUNKETT RAYSCH ARCHITECTS, LLP

CONDITIONAL USE REVIEW
TAX KEY: 3830243000
DATE: 06-07-2023
JOB NO: 200239-04
SHEET NO: A201

MEADOWBROOK CHURCH
ADDITION & RENOVATION

1025 N. 70TH STREET, WAUKATOSA, WI 53213

FIRST FLOOR PLAN

prad
PLUNKETT RAYSCH
ARCHITECTS, LLP

700 South Maple Street, Milwaukee, Wisconsin 53204
414.352.8900
2310 Crossroads Drive, Suite 200, Madison, Wisconsin 53718
608.240.9900
1977 Main Street, Suite 201, Janesville, Florida 34736
813.446.8805
311 Corporate Drive, Suite 200, Fort Myers, Florida 33901
941.446.8805