

WEST 1/4 COR.
SEC. 30-7-21

S1° 43' 03"E 2645.51'

S1° 43' 03"E 1858.59'
W. LINE OF SW 1/4 SEC. 30-7-21

WEST 1/4 COR.
SEC. 30-7-21

CALL DIGGERS' HOTLINE
1-800-242-8511
TOLL FREE
WE STATE: 182.075(1974)
REQUIRE MIN. 3 WORK DAYS
NOTICE BEFORE YOU EXCAVATE
MILW. AREA 259-1181

THE UNDERGROUND UTILITY INFORMATION SHOWN ON THIS MAP IS BASED ON FIELD MARKINGS AND INFORMATION FURNISHED BY UTILITY COMPANIES AND THE LOCAL MUNICIPALITY. WHILE THIS INFORMATION IS BELIEVED TO BE RELIABLE, ITS ACCURACY AND COMPLETENESS CANNOT BE GUARANTEED.



- LEGEND:**
- | | |
|---------------------|--------------------------|
| --- | SECTION 1/4 SECTION LINE |
| --- | PROPERTY LINE |
| --- | EASEMENT |
| X | CHAIN LINK FENCE |
| --- | TREE LINE |
| OH | OVERHEAD UTILITY LINE |
| E | ELECTRIC |
| TEL | TELEPHONE |
| FO | FIBER OPTIC |
| CTV | CABLE TV |
| SAN | SANITARY SEWER |
| FM | FORCE MAIN |
| ST | STORM SEWER |
| W | WATER MAIN |
| G | GAS |
| 670 | EXISTING CONTOUR |
| WET | WETLAND |
| FP | FLOODPLAIN |
| MANHOLE | IRON PIPE FOUND/SET |
| CATCH BASIN | REBAR FOUND/SET |
| CATCH BASIN (ROUND) | CHISELED CROSS FOUND/SET |
| ROOF DRAIN | PK NAIL FOUND/SET |
| HYDRANT | SPIKE/NAIL |
| WATER VALVE | MONUMENT |
| GAS VALVE | BENCHMARK |
| UTILITY POLE | SIGN |
| GUY WIRE | DECIDUOUS TREE |
| GAS METER | CONIFEROUS TREE |
| ELECTRIC METER | BUSH |
| UTILITY PEDESTAL | POST |
| TRAFFIC SIGNAL | |
| LIGHT POLE | |
| SOIL BORING | |
| MONITORING WELL | |

- GENERAL NOTES:
- THE UNDERGROUND UTILITY INFORMATION SHOWN ON THIS DRAWING IS BASED ON FIELD LOCATIONS AND/OR RECORDS FURNISHED BY MUNICIPALITIES AND UTILITY COMPANIES. THE LOCATION AND ACCURACY OF WHICH CANNOT BE GUARANTEED. THERE MAY BE ADDITIONAL UNDERGROUND UTILITY INSTALLATIONS WITHIN THE PROJECT AREA THAT ARE NOT SHOWN.
 - VERIFY ACTUAL LOCATIONS AND INVERTS IN THE FIELD. ANY POTENTIAL ERRORS, OMISSIONS, OR DISCREPANCIES SHALL BE BROUGHT TO THE ATTENTION OF THE ENGINEER PRIOR TO PROCEEDING WITH CONSTRUCTION.
 - DRAWING IS BASED ON FIELD SURVEY COMPLETED BY THE SIGMA GROUP ON OCTOBER 5TH, 2022.
 - DATUM FOR THE PROJECT SURVEY IS CITY OF WAUWATOSA. BENCHMARK FOR THE PROJECT SURVEY IS WEST FLANGE BOLT OF HYDRANT AT THE NORTHEAST CORNER OF BLUEMOUND AND 115TH ST. WITH AN ELEVATION OF 237.05.
 - CONTRACTOR TO VERIFY EXISTING CONDITIONS, CONTACT ENGINEER WITH DISCREPANCIES.

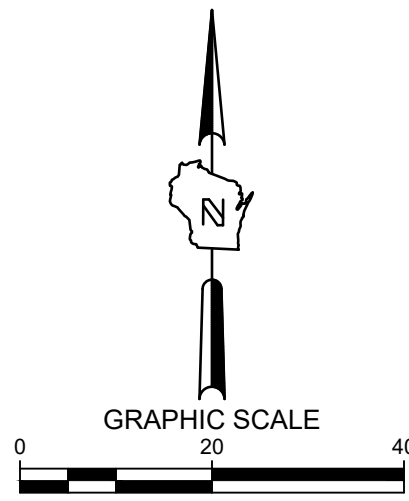
114TH AND BLUEMOUND
11430 - 11400 BLUEMOUND ROAD
WAUWATOSA, WISCONSIN

SITE SURVEY

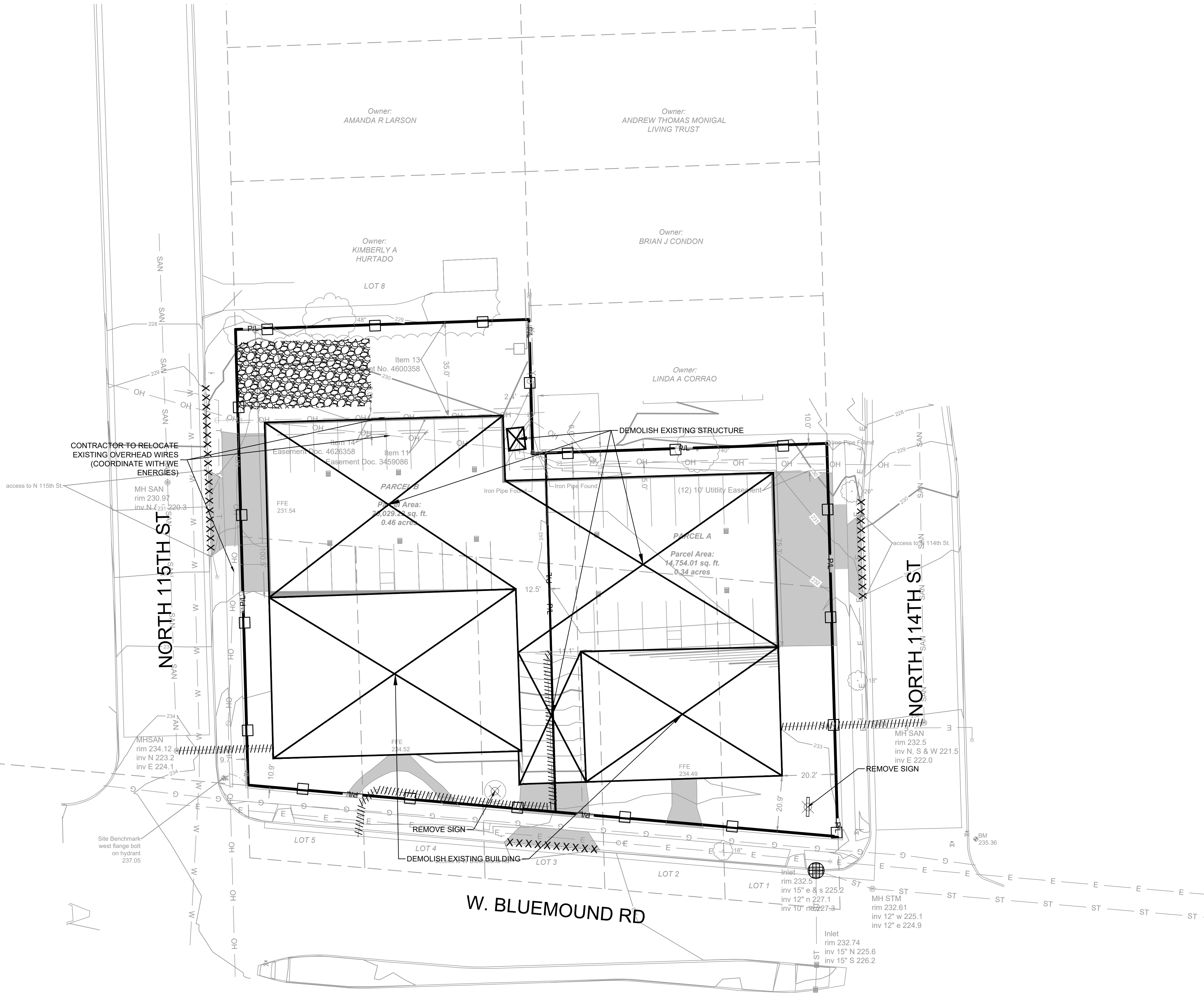
PRELIMINARY
NOT FOR
CONSTRUCTION

SCALE:	1"=20'
PROJECT NO:	21393
DESIGN DATE:	----
PLOT DATE:	1/31/2023
DRAWN BY:	----
CHECKED BY:	----
APPROVED BY:	----
SHEET NO:	C001

SIGMA GROUP
Single Source. Sound Solutions.
www.thesigmagroup.com
1300 West Canal Street
Milwaukee, WI 53233
Phone: 414-643-4200
Fax: 414-643-4210



WEST 1/4 COR.
SEC. 30-7-21



CONTRACTOR TO RELOCATE
EXISTING OVERHEAD WIRES
(COORDINATE WITH WE
ENERGIES)

DEMOLISH EXISTING STRUCTURE

REMOVE SIGN

REMOVE SIGN

DEMOLISH EXISTING BUILDING

W. BLUEMOUND RD

NORTH 115TH ST

NORTH 114TH ST

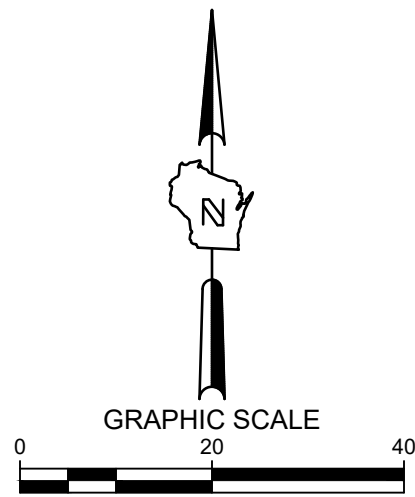
LEGEND:

- PROPOSED SILT SOCK
- PROPOSED INLET PROTECTION
- PROPOSED TRACKING PAD
- PROPOSED EROSION MATTING WISDOT
APPROVED CLASS 1 TYPE B
- EXISTING CONTOUR
- PROPOSED CONTOUR
- UTILITY REMOVAL
- CURB REMOVAL
- STRUCTURE REMOVAL
- PAVEMENT REMOVAL

GENERAL NOTES:

- THE UNDERGROUND UTILITY INFORMATION SHOWN ON THIS DRAWING IS BASED ON FIELD LOCATIONS AND/OR RECORDS FURNISHED BY MUNICIPALITIES AND UTILITY COMPANIES. THE LOCATION AND ACCURACY OF WHICH CANNOT BE GUARANTEED. THERE MAY BE ADDITIONAL UNDERGROUND UTILITY INSTALLATIONS WITHIN THE PROJECT AREA THAT ARE NOT SHOWN.
- VERIFY ACTUAL LOCATIONS AND INVERTS IN THE FIELD. ANY POTENTIAL ERRORS, OMISSIONS, OR DISCREPANCIES SHALL BE BROUGHT TO THE ATTENTION OF THE ENGINEER PRIOR TO PROCEEDING WITH CONSTRUCTION.
- WORK TO BE COMPLETED IS INDICATED IN BOLD TYPE LINES AND EXISTING CONDITIONS ARE INDICATED BY LIGHT TYPE LINES.
- ELECTRONIC CIVIL FILES ARE AVAILABLE UPON WRITTEN REQUEST. DO NOT USE ELECTRONIC CIVIL FILES TO LAYOUT FOUNDATIONS, COLUMN LINES, LIGHT POLES, OR OTHER NON CIVIL SITE WORK. REFER TO ARCHITECTURAL DRAWINGS FOR DIMENSIONS OF BUILDING AND ARCHITECTURAL FEATURES.
- SEE SHEET C401 FOR A COMPLETE LIST OF EROSION CONTROL NOTES AND DETAILS. EROSION CONTROL MEASURES SHALL BE INSTALLED PRIOR TO START OF LAND DISTURBING ACTIVITIES.
- DO NOT BEGIN LAND DISTURBING ACTIVITIES UNTIL AN EROSION CONTROL PERMIT IS OBTAINED FROM LOCAL JURISDICTION.

TH SIGMA GROUP
Single Source. Sound Solutions.
www.thesigmagroup.com
1300 West Canal Street
Milwaukee, WI 53233
Phone: 414-643-4200
Fax: 414-643-4210



114TH AND BLUEMOUND
11430 - 11400 BLUEMOUND ROAD
WAUWATOSA, WISCONSIN

EROSION CONTROL PLAN

PRELIMINARY
NOT FOR
CONSTRUCTION

SCALE:	1"=20'
PROJECT NO:	21393
DESIGN DATE:	----
PLOT DATE:	2023.01.31
DRAWN BY:	----
CHECKED BY:	----
APPROVED BY:	----
SHEET NO:	C002

TO OBTAIN LOCATIONS OF
PAVEMENT UNDERGROUND
FACILITIES BEFORE YOU
DIG IN WISCONSIN



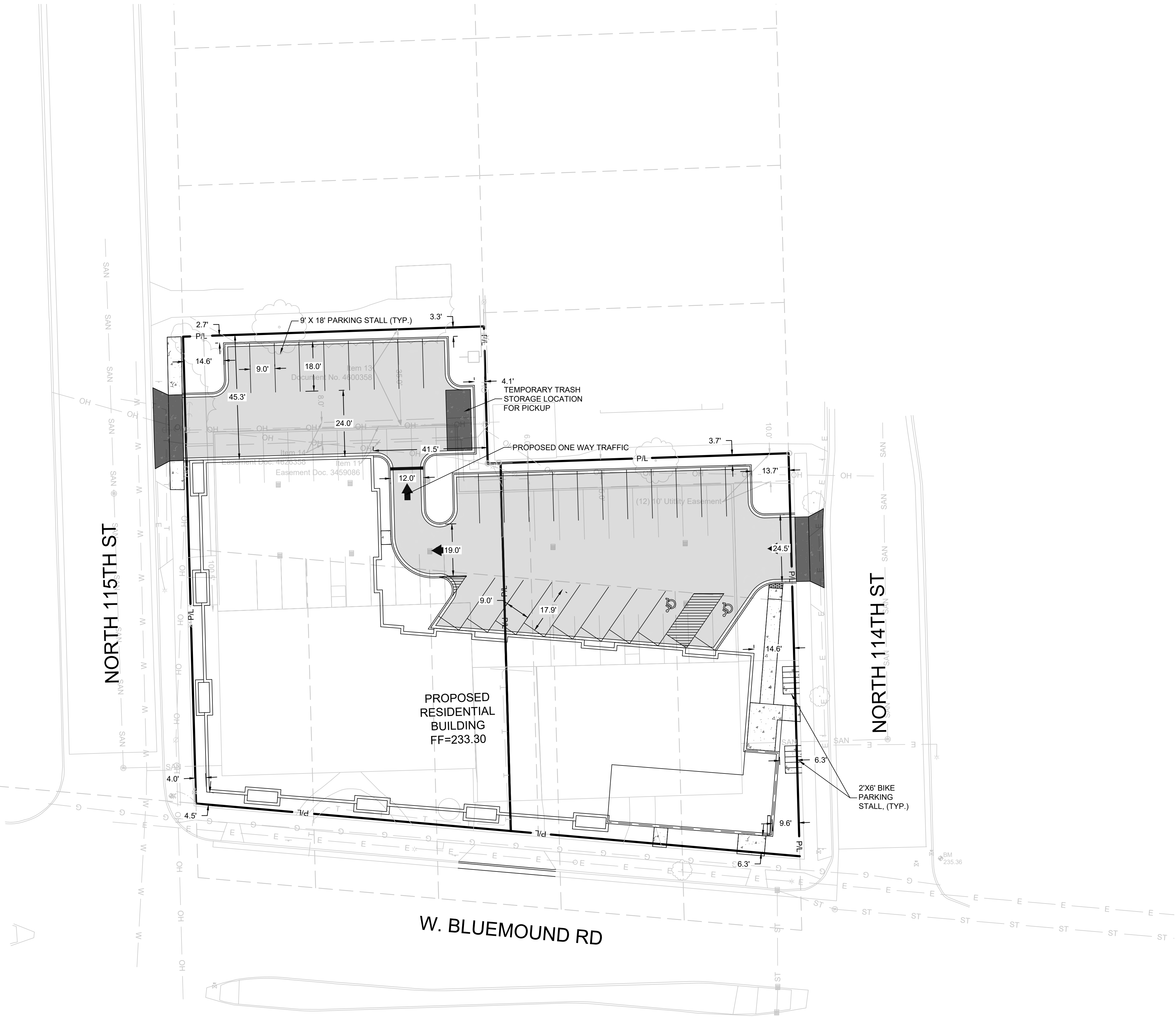
CALL DIGGERS HOTLINE
1-800-242-8511
TOLL FREE
WIS STATUTE 182.07(2)(197A)
REQUIRES MIN. 3 WORK DAYS
NOTICE BEFORE YOU EXCAVATE
MILW. AREA 259-1181

THE UNDERGROUND UTILITY INFORMATION SHOWN ON THIS MAP IS BASED
ON FIELD MARKINGS AND INFORMATION FURNISHED BY UTILITY
COMPANIES AND THE LOCAL MUNICIPALITY. WHILE THIS INFORMATION IS
BELIEVED TO BE RELIABLE, ITS ACCURACY AND COMPLETENESS CANNOT
BE GUARANTEED.



CALL DIGGERS HOTLINE
1-800-242-8511
TOLL FREE
WIS. STATUTE 182.07(2)(197A)
REQUIRES MIN. 3 WORK DAYS
NOTICE BEFORE YOU EXCAVATE
MILW. AREA 259-1181

THE UNDERGROUND UTILITY INFORMATION SHOWN ON THIS MAP IS BASED ON FIELD MARKINGS AND INFORMATION FURNISHED BY UTILITY COMPANIES AND THE LOCAL MUNICIPALITY. WHILE THIS INFORMATION IS BELIEVED TO BE RELIABLE, ITS ACCURACY AND COMPLETENESS CANNOT BE GUARANTEED.



SITE INFORMATION			
SITE AREA	34783	0.799 AC	
SITE DISTURBED AREA	34783	0.799 AC	
EXISTING IMPERVIOUS AREA	26310	0.604 AC	75.6 %
PROPOSED IMPERVIOUS AREA	30065	0.690 AC	86.4 %
TOTAL OUTDOOR PARKING SPACES	28		
OUTDOOR ADA PARKING SPACES	2		
TOTAL UNDERGROUND PARKING SPACES	39		
UNDERGROUND ADA PARKING SPACES	2		
TOTAL PARKING PROVIDED	71		

LEGEND:	
	(B C401) 5" THICK CONCRETE WALK
	(C C401) HEAVY DUTY CONCRETE PAVEMENT
	(D C401) ASPHALT SURFACE
	(A C401) CURB & GUTTER (ACCEPT)
	(A C401) CURB & GUTTER (REJECT)

GENERAL NOTES:

- THE UNDERGROUND UTILITY INFORMATION SHOWN ON THIS DRAWING IS BASED ON FIELD LOCATIONS AND/OR RECORDS FURNISHED BY MUNICIPALITIES AND UTILITY COMPANIES. THE LOCATION AND ACCURACY OF WHICH CANNOT BE GUARANTEED. THERE MAY BE ADDITIONAL UNDERGROUND UTILITY INSTALLATIONS WITHIN THE PROJECT AREA THAT ARE NOT SHOWN.
- VERIFY ACTUAL LOCATIONS AND INVERTS IN THE FIELD. ANY POTENTIAL ERRORS, OMISSIONS, OR DISCREPANCIES SHALL BE BROUGHT TO THE ATTENTION OF THE ENGINEER PRIOR TO PROCEEDING WITH CONSTRUCTION.
- WORK TO BE COMPLETED IS INDICATED IN BOLD TYPE LINES AND EXISTING CONDITIONS ARE INDICATED BY LIGHT TYPE LINES.
- ELECTRONIC CIVIL FILES ARE AVAILABLE UPON WRITTEN REQUEST. DO NOT USE ELECTRONIC CIVIL FILES TO LAYOUT FOUNDATIONS, COLUMN LINES, LIGHT POLES, OR OTHER NON CIVIL SITE WORK. REFER TO ARCHITECTURAL DRAWINGS FOR DIMENSIONS OF BUILDING AND ARCHITECTURAL FEATURES.
- DIMENSIONS ARE FROM FACE OF CURB OR EDGE OF PAVEMENT.
- WORK WITHIN THE PUBLIC RIGHT OF WAY, INCLUDING BUT NOT LIMITED TO DRIVEWAY OPENINGS, SIDEWALK AND RAMPS, PAVING, AND CURB AND GUTTER SHALL BE COMPLETED PER MUNICIPAL AND/OR COUNTY REQUIREMENTS AND STANDARDS.
- EARTHWORK SHALL BE IN ACCORDANCE WITH GEOTECHNICAL ENGINEER'S RECOMMENDATIONS.

114TH AND BLUEMOUND
11430 - 11400 BLUEMOUND ROAD
WAUWATOSA, WISCONSIN

SITE PLAN

PRELIMINARY
NOT FOR
CONSTRUCTION

SCALE:	1"=20'
PROJECT NO:	21393
DESIGN DATE:	----
PLOT DATE:	1/31/2023
DRAWN BY:	----
CHECKED BY:	----
APPROVED BY:	----
SHEET NO:	C100

WEST 1/4 COR.
SEC. 30-7-21

W. LINE OF SW 1/4 SEC. 30-7-21

WEST 1/4 COR.
SEC. 30-7-21



CALL DIGGERS HOTLINE
1-800-242-8511
TOLL FREE
MS STATUTE 182.07(2)(1974)
REQUIRES MIN. 3 WORK DAYS
NOTICE BEFORE YOU EXCAVATE
MILW. AREA 259-1181

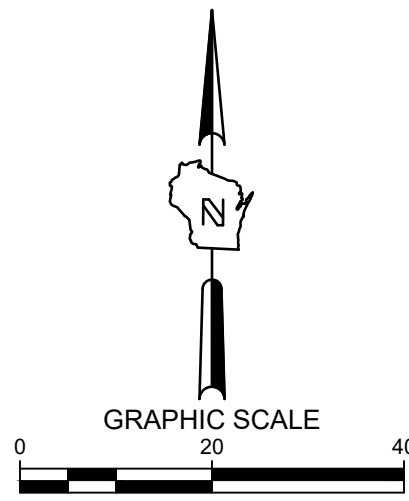
THE UNDERGROUND UTILITY INFORMATION SHOWN ON THIS MAP IS BASED ON FIELD MARKINGS AND INFORMATION FURNISHED BY UTILITY COMPANIES AND THE LOCAL MUNICIPALITY. WHILE THIS INFORMATION IS BELIEVED TO BE RELIABLE, ITS ACCURACY AND COMPLETENESS CANNOT BE GUARANTEED.



- LEGEND:**
- -
 -
 -
 -
 -
 -
 -
 -
 -

- GENERAL NOTES:**
- THE UNDERGROUND UTILITY INFORMATION SHOWN ON THIS DRAWING IS BASED ON FIELD LOCATIONS AND/OR RECORDS FURNISHED BY MUNICIPALITIES AND UTILITY COMPANIES. THE LOCATION AND ACCURACY OF WHICH CANNOT BE GUARANTEED. THERE MAY BE ADDITIONAL UNDERGROUND UTILITY INSTALLATIONS WITHIN THE PROJECT AREA THAT ARE NOT SHOWN.
 - VERIFY ACTUAL LOCATIONS AND INVERTS IN THE FIELD. ANY POTENTIAL ERRORS, OMISSIONS, OR DISCREPANCIES SHALL BE BROUGHT TO THE ATTENTION OF THE ENGINEER PRIOR TO PROCEEDING WITH CONSTRUCTION.
 - WORK TO BE COMPLETED IS INDICATED IN BOLD TYPE LINES AND EXISTING CONDITIONS ARE INDICATED BY LIGHT TYPE LINES.
 - ELECTRONIC CIVIL FILES ARE AVAILABLE UPON WRITTEN REQUEST. DO NOT USE ELECTRONIC CIVIL FILES TO LAYOUT FOUNDATIONS, COLUMN LINES, LIGHT POLES, OR OTHER NON CIVIL SITE WORK. REFER TO ARCHITECTURAL DRAWINGS FOR DIMENSIONS OF BUILDING AND ARCHITECTURAL FEATURES.
 - DIMENSIONS ARE FROM FACE OF CURB OR EDGE OF PAVEMENT.
 - WORK WITHIN THE PUBLIC RIGHT OF WAY, INCLUDING BUT NOT LIMITED TO DRIVEWAY OPENINGS, SIDEWALK AND RAMPS, PAVING, AND CURB AND GUTTER SHALL BE COMPLETED PER MUNICIPAL AND/OR COUNTY REQUIREMENTS AND STANDARDS.
 - EARTHWORK SHALL BE IN ACCORDANCE WITH GEOTECHNICAL ENGINEER'S RECOMMENDATIONS.

THE SIGMA GROUP
Single Source. Sound Solutions.
www.thesigmagroup.com
1300 West Canal Street
Milwaukee, WI 53233
Phone: 414-643-4200
Fax: 414-643-4210



114TH AND BLUEMOUND
11430 - 11400 BLUEMOUND ROAD
WAUWATOSA, WISCONSIN

GRADING PLAN

PRELIMINARY
NOT FOR
CONSTRUCTION

SCALE:	1"=20'
PROJECT NO:	21393
DESIGN DATE:	----
PLOT DATE:	1/31/2023
DRAWN BY:	----
CHECKED BY:	----
APPROVED BY:	----
SHEET NO:	C200

WEST 1/4 COR.
SEC. 30-7-21

W. LINE OF SW 1/4 SEC. 30-7-21



CALL DIGGERS HOTLINE
1-800-242-8511
TOLL FREE

WE STATUTE 182.07(2)(1974)
REQUIRES MIN. 3 WORK DAYS
NOTICE BEFORE YOU EXCAVATE
MILW. AREA 259-1181

THE UNDERGROUND UTILITY INFORMATION SHOWN ON THIS MAP IS BASED ON FIELD MARKINGS AND INFORMATION FURNISHED BY UTILITY COMPANIES AND THE LOCAL MUNICIPALITY. WHILE THIS INFORMATION IS BELIEVED TO BE RELIABLE, ITS ACCURACY AND COMPLETENESS CANNOT BE GUARANTEED.



- LEGEND:**
- W— PROPOSED WATER SERVICE
 - SAN— PROPOSED SANITARY SERVICE
 - ST— PROPOSED STORM SEWER
 - PROPOSED STORM INLET
 - PROPOSED STORM MANHOLE

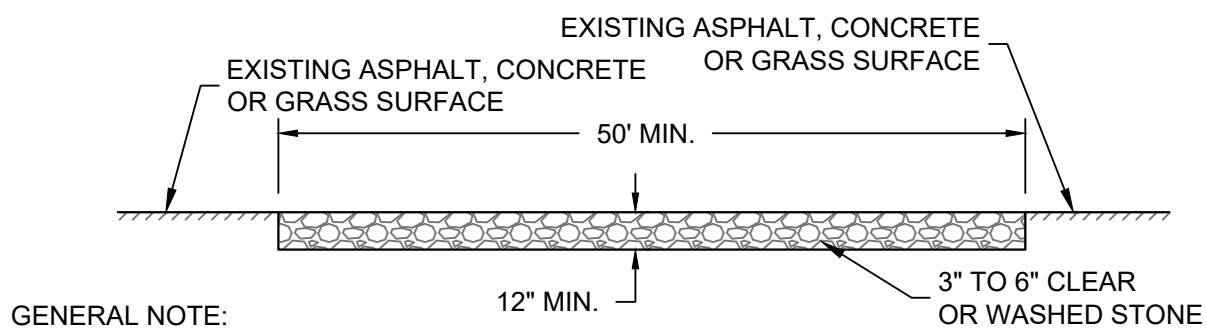
- GENERAL NOTES:**
- THE UNDERGROUND UTILITY INFORMATION SHOWN ON THIS DRAWING IS BASED ON FIELD LOCATIONS AND/OR RECORDS FURNISHED BY MUNICIPALITIES AND UTILITY COMPANIES. THE LOCATION AND ACCURACY OF WHICH CANNOT BE GUARANTEED. THERE MAY BE ADDITIONAL UNDERGROUND UTILITY INSTALLATIONS WITHIN THE PROJECT AREA THAT ARE NOT SHOWN.
 - VERIFY ACTUAL LOCATIONS AND INVERTS IN THE FIELD. ANY POTENTIAL ERRORS, OMISSIONS, OR DISCREPANCIES SHALL BE BROUGHT TO THE ATTENTION OF THE ENGINEER PRIOR TO PROCEEDING WITH CONSTRUCTION.
 - WORK TO BE COMPLETED IS INDICATED IN BOLD TYPE LINES AND EXISTING CONDITIONS ARE INDICATED BY LIGHT TYPE LINES.
 - ELECTRONIC CIVIL FILES ARE AVAILABLE UPON WRITTEN REQUEST. DO NOT USE ELECTRONIC CIVIL FILES TO LAYOUT FOUNDATIONS, COLUMN LINES, LIGHT POLES, OR OTHER NON CIVIL SITE WORK. REFER TO ARCHITECTURAL DRAWINGS FOR DIMENSIONS OF BUILDING AND ARCHITECTURAL FEATURES.
 - ALL UTILITIES WITHIN 5 FEET OF PAVED AREAS SHALL REQUIRE GRANULAR BACKFILL. SLURRY BACKFILL IS REQUIRED FOR ALL WORK IN PUBLIC RIGHT OF WAY.
 - PRIVATE STORM INLETS IN PAVEMENT SHALL REQUIRE DRAIN TILE STUBS OF 10 FEET IN TWO DIRECTIONS FOR SUBDRAINAGE. RIM GRADE FOR STORM INLETS IN CURB AND GUTTER ARE FLOW LINE GRADES.
 - WORK IN PUBLIC RIGHT OF WAY SHALL FOLLOW MATERIAL AND INSTALLATION REQUIREMENTS PER MUNICIPAL AND/OR COUNTY.
 - PRIVATE STORM SEWER 12-INCH DIAMETER OR LARGER SHALL BE HDPE. BELOW 12-INCH DIAMETER SHALL BE PVC SDR-35 ASTM D3034. PRIVATE WATER MAIN SHALL BE CLASS 235 DR 18 PVC CONFORMING TO AWWA C-900. PRIVATE SANITARY SEWER SHALL BE PVC SDR-35 ASTM D3034.
 - COORDINATE FINAL LOCATION AND DESIGN OF PRIVATE UTILITY SERVICES (ELECTRIC, GAS, PHONE, CABLE) WITH UTILITY COMPANIES.
 - IF PROJECT IS DESIGN BUILD MEP, THE GENERAL CONTRACTOR IS REQUIRED TO PROVIDE FINAL SEWER AND WATER DESIGN SHOWING LOCATION, INVERTS AND SIZES TO THE ENGINEER FOR FINAL REVIEW AND VERIFICATION PRIOR TO STARTING UNDERGROUND UTILITY CONSTRUCTION.
 - WATER MAIN CONNECTION: TAP WATER MAIN WITH SIZE AND LOCATION INDICATED ON PLAN IN ACCORDANCE WITH LOCAL WATER UTILITY REQUIREMENTS. COORDINATE CONNECTION WITH LOCAL WATER UTILITY. ALL JOINTS SHALL BE RESTRAINED FROM CONNECTION OF WATER MAIN TO BUILDING WALL. SUBMIT JOINT RESTRAINT DETAILS FOR ALL JOINT TYPES INCLUDING PUSH-ON AND MECHANICAL CONNECTIONS. INSTALL MEGA-LUG OR APPROVED EQUAL TIGHT TO WALL FOR RESTRAINT FOR ALL BUILDING WALL PENETRATIONS AS APPROVED BY LOCAL PLUMBING INSPECTOR AND WATER UTILITY. INSTALL THRUST BLOCKING AND MEGA-LUG AT BEND BELOW FLOOR FOR ALL FLOOR PENETRATIONS.
 - INSTALL JOINT RESTRAINT AND CONCRETE THRUST BLOCKS AT ALL OFFSET FITTINGS (TEES, BENDS, DEAD ENDS, VALVES, REDUCERS) USING MEGA-LUG OR APPROVED EQUAL. CONCRETE THRUST BLOCKS SHALL BE INSTALLED PER FILE NO'S:44,45,46 FROM THE STANDARD SPECIFICATIONS FOR SEWER AND WATER CONSTRUCTION IN WISCONSIN. SEE DETAIL FOR MINIMUM LENGTH OF RESTRAINED JOINT REQUIRED. SUBMIT JOINT RESTRAINT DETAILS FOR ALL JOINT TYPES INCLUDING PUSH-ON AND MECHANICAL CONNECTIONS.

114TH AND BLUEMOUND
11430 - 11400 BLUEMOUND ROAD
WAUWATOSA, WISCONSIN

PRELIMINARY
NOT FOR
CONSTRUCTION

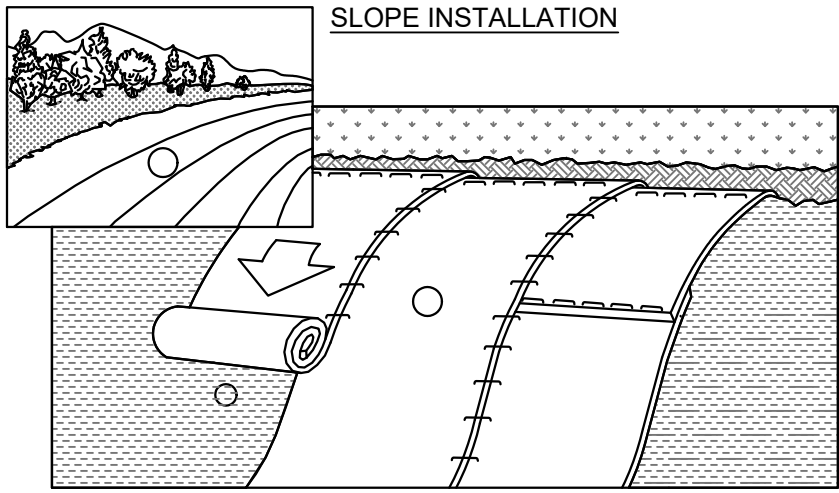
SCALE:	1"=20'
PROJECT NO:	21393
DESIGN DATE:	----
PLOT DATE:	1/31/2023
DRAWN BY:	----
CHECKED BY:	----
APPROVED BY:	----
SHEET NO:	C300

THE SIGMA GROUP
Single Source. Sound Solutions.
www.thesigmagroup.com
1300 West Canal Street
Milwaukee, WI 53233
Phone: 414-643-4200
Fax: 414-643-4210



- GENERAL NOTE:
- STONE TRACKING PAD SHALL CONFORM TO WDNR CONSERVATION PRACTICE STANDARD #1057
 - AN APPROVED MANUFACTURED TRACKOUT CONTROL DEVICE SYSTEM CONFORMING TO WDNR TECHNICAL STANDARD #1057 MAY BE USED AS AN ALTERNATIVE TO A STONE TRACKING PAD

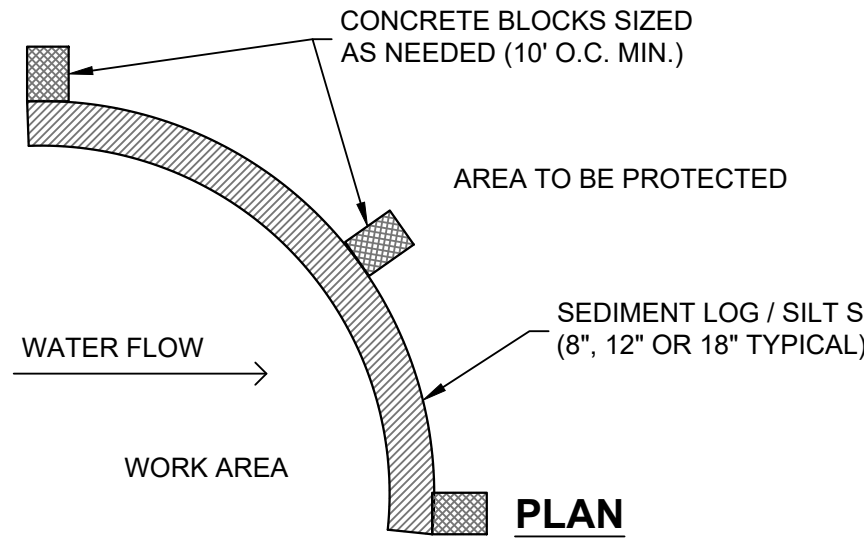
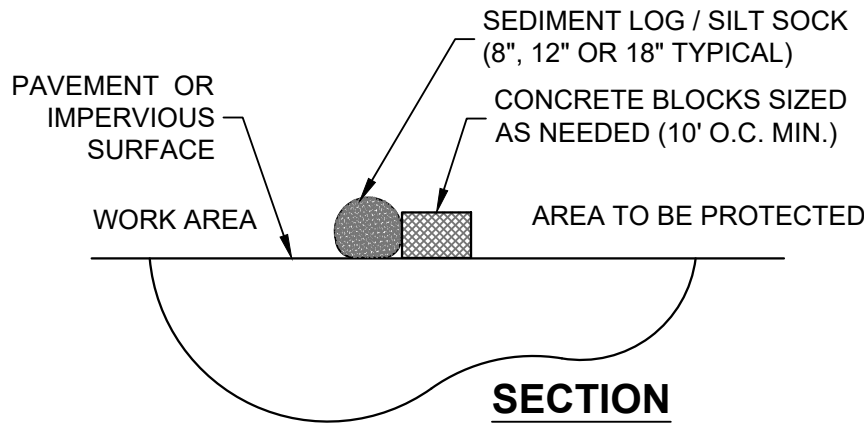
A CONSTRUCTION ENTRANCE - WDNR TS-1057
SCALE:NTS



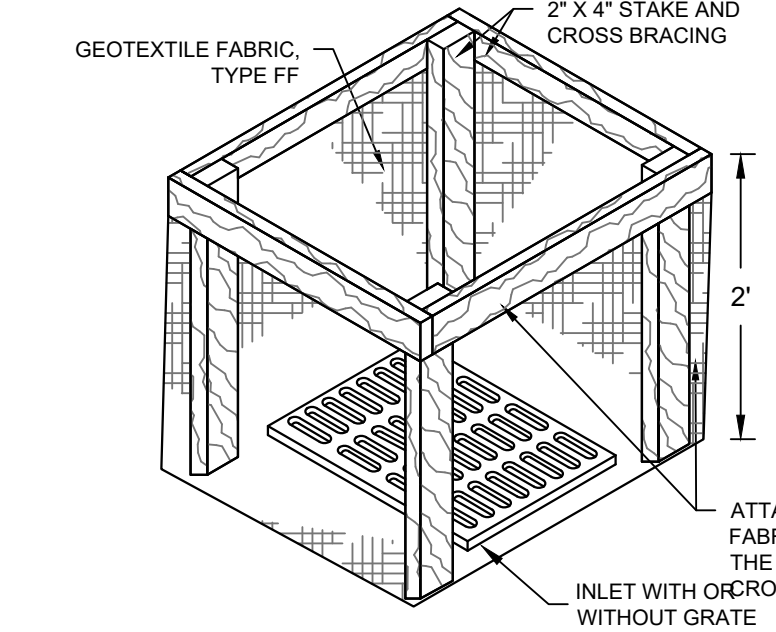
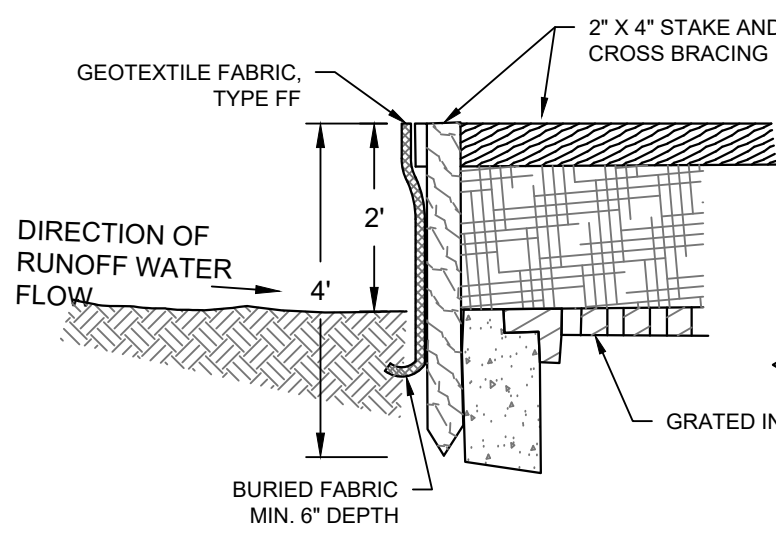
- ECRMs (EROSION CONTROL REVEGATIVE MATS) SHALL BE INSTALLED AFTER ALL TOPSOILING, FERTILIZING, LIMING, AND SEEDING IS COMPLETE.
- THE MAT SHALL BE IN FIRM AND INTIMATE CONTACT WITH THE SOIL. IT SHALL BE INSTALLED AND ANCHORED PER THE MANUFACTURER'S RECOMMENDATION.
- TRMs (TURF-REINFORCEMENT MAT) SHALL BE INSTALLED INCONJUNCTION WITH THE TOPSOILING OPERATION AND SHALL BE FOLLOWED BY ECRM INSTALLATION.
- AT TIME OF INSTALLATION, DOCUMENT THE MANUFACTURER AND MAT TYPE BY RETENTION OF MATERIAL LABELS AND MANUFACTURER'S INSTALLATION INSTRUCTIONS. RETAIN THIS DOCUMENTATION UNTIL THE SITE HAS BEEN STABILIZED.

- NOTES:
- EROSION MATTING SHALL CONFORM TO WDNR CONSERVATION PRACTICE STANDARD #1052.
 - INSTALL PER MANUFACTURERS SPECIFICATIONS.

D EROSION MATTING - WDNR TS-1052
SCALE:NTS



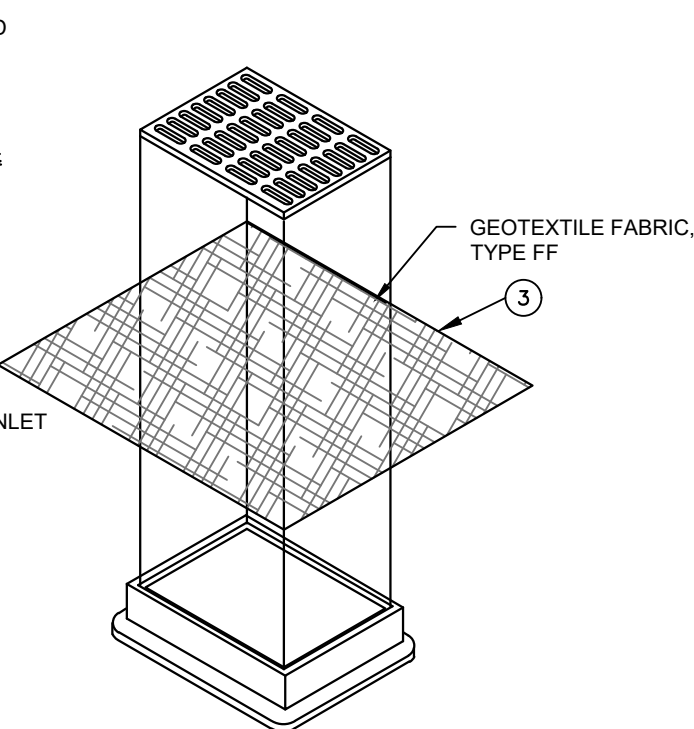
B SEDIMENT LOG - SILT SOCK ON PAVEMENT
SCALE:NTS



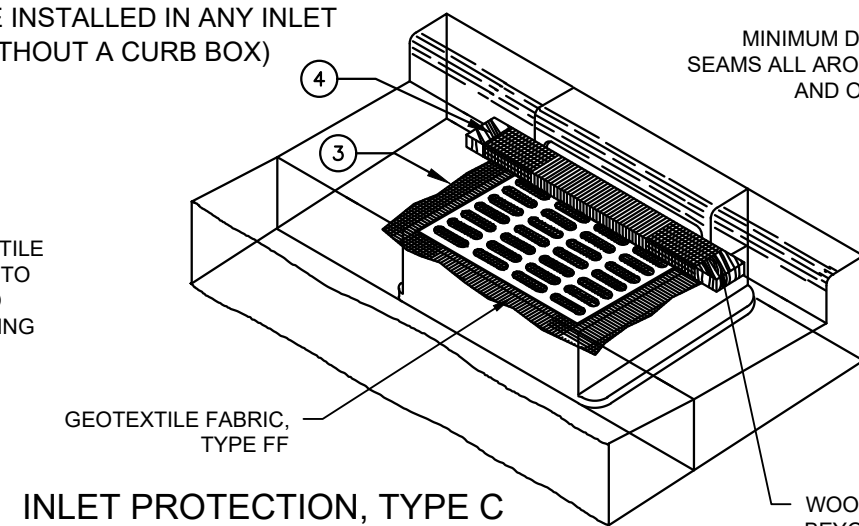
INLET PROTECTION, TYPE A

- GENERAL NOTES:
- MANUFACTURED ALTERNATIVES APPROVED AND LISTED ON THE DEPARTMENT'S EROSION CONTROL PRODUCT ACCEPTABILITY LIST MAY BE SUBSTITUTED.
 - WHEN REMOVING OR MAINTAINING INLET PROTECTION, CARE SHALL BE TAKEN SO THAT THE SEDIMENT TRAPPED ON THE GEOTEXTILE FABRIC DOES NOT FALL INTO THE INLET. ANY MATERIAL FALLING INTO THE INLET SHALL BE REMOVED IMMEDIATELY.
- FINISHED SIZE, INCLUDING FLAP POCKETS WHERE REQUIRED, SHALL EXTEND A MINIMUM OF 10" AROUND THE PERIMETER TO FACILITATE MAINTENANCE OR REMOVAL FOR INLET PROTECTION, TYPE C (WITH CURB BOX), AN ADDITIONAL 18" OF FABRIC IS WRAPPED AROUND THE WOOD AND SECURED WITH STAPLES. THE WOOD SHALL NOT BLOCK THE ENTIRE HEIGHT OF THE CURB BOX OPENING.
- FLAP POCKETS SHALL BE LARGE ENOUGH TO ACCEPT WOOD 2X4.

C INLET PROTECTION - WDNR TS-1060
SCALE:NTS



INLET PROTECTION, TYPE B (WITHOUT CURB BOX)
(CAN BE INSTALLED IN ANY INLET WITHOUT A CURB BOX)

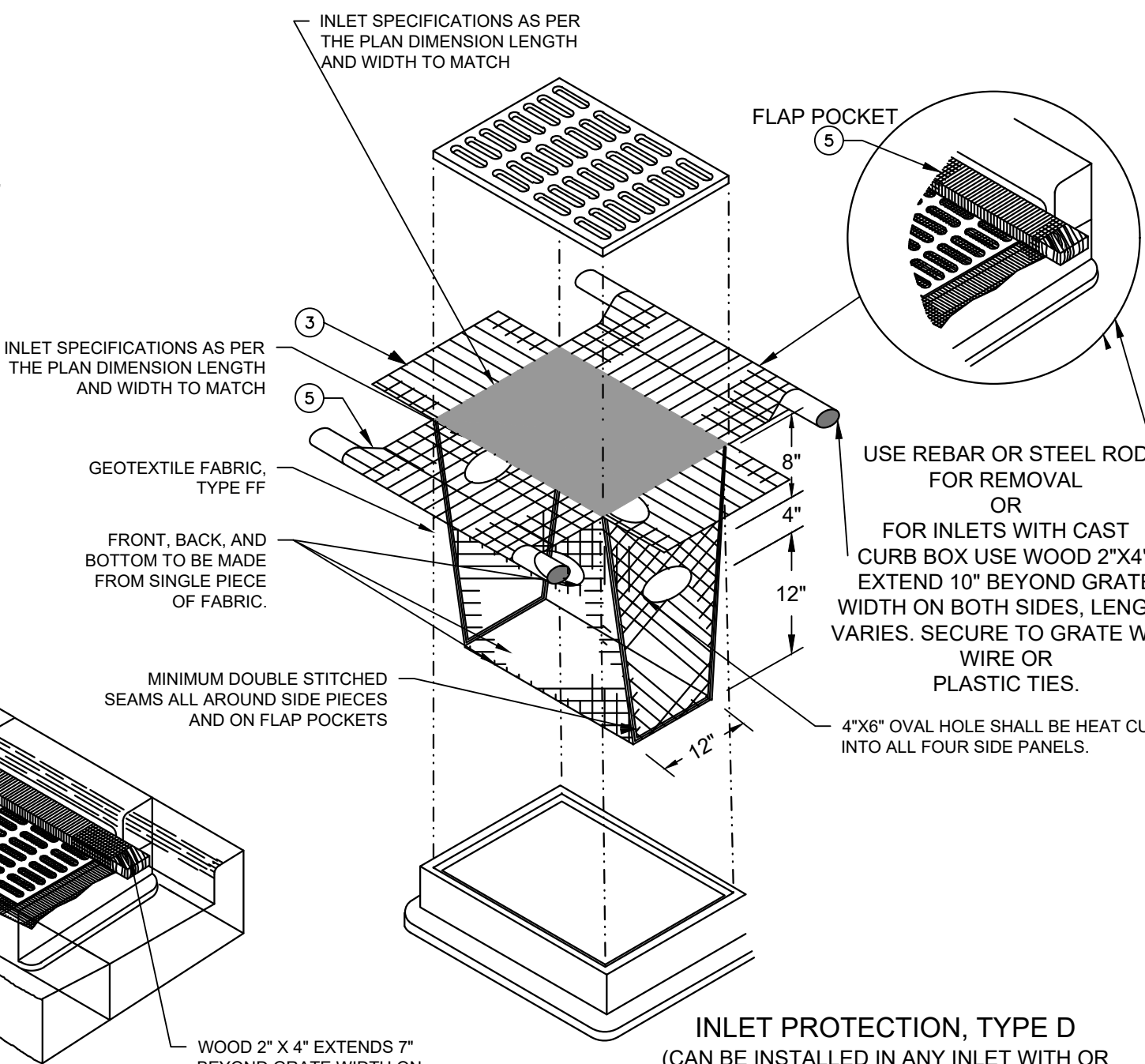


INLET PROTECTION, TYPE C (WITH CURB BOX)

INSTALLATION NOTES

TYPE B & C
TRIM EXCESS FABRIC IN THE FLOW LINE TO WITHIN 3" OF THE GRATE. THE CONTRACTOR SHALL DEMONSTRATE A METHOD OF MAINTENANCE, USING A SEWN FLAP, HAND HOLDS OR OTHER METHOD TO PREVENT ACCUMULATED SEDIMENT FROM ENTERING THE INLET.

TYPE D
DO NOT INSTALL INLET PROTECTION TYPE D IN INLETS SHALLOWER THAN 30", MEASURED FROM THE BOTTOM OF THE INLET TO THE TOP OF THE GRATE. TRIM EXCESS FABRIC IN THE FLOW LINE TO WITHIN 3" OF THE GRATE. THE INSTALLED BAG SHALL HAVE A MINIMUM SIDE CLEARANCE, BETWEEN THE INLET WALLS AND THE BAG, MEASURED AT THE BOTTOM OF THE OVERFLOW HOLES, OF 3". WHERE NECESSARY THE CONTRACTOR SHALL CINCH THE BAG, USING PLASTIC ZIP TIES, TO ACHIEVE THE 3" CLEARANCE. THE TIES SHALL BE PLACES AT A MAXIMUM OF 4" FROM THE BOTTOM OF THE BAG.



INLET PROTECTION, TYPE D
(CAN BE INSTALLED IN ANY INLET WITH OR WITHOUT A CURB BOX AS PER NOTE)

GENERAL NOTE
INLET PROTECTION SHALL CONFORM TO WDNR CONSERVATION PRACTICE STANDARD #1060

THIS DRAWING IS BASED ON
WISCONSIN DEPARTMENT
OF TRANSPORTATION
STANDARD DETAIL DRAWING
8 E 10-2

EROSION CONTROL NOTES:

- CONSTRUCTION SITE EROSION CONTROL AND SEDIMENTATION CONTROL SHALL COMPLY WITH THE REQUIREMENTS OF THE LOCAL MUNICIPALITY AND SHALL EMPLOY EROSION CONTROL METHODS AS SHOWN AND SPECIFIED IN THE WISCONSIN DEPARTMENT OF NATURAL RESOURCES TECHNICAL STANDARDS.
- ALL EROSION CONTROL MEASURES SHALL BE ADJUSTED TO MEET FIELD CONDITIONS AT THE TIME OF CONSTRUCTION AND SHALL BE INSTALLED PRIOR TO ANY GRADING OR DISTURBANCE OF EXISTING SURFACE MATERIAL ON THE SITE.
- EROSION AND SEDIMENT CONTROL MEASURES SHALL BE CHECKED FOR STABILITY AND OPERATION AFTER A RAINFALL OF 0.5 INCHES OR MORE, BUT NO LESS THAN ONCE EVERY WEEK. MAINTENANCE OF ALL EROSION CONTROL STRUCTURES SHALL BE PROVIDED TO INSURE INTENDED PURPOSE IS ACCOMPLISHED. CONTRACTOR SHALL BE RESPONSIBLE FOR CLEANUP AND REMOVAL OF ALL SEDIMENT WHEN LEAVING PROPERTY. EROSION CONTROL MEASURES MUST BE IN WORKING CONDITION AT END OF EACH WORK DAY. DOCUMENT AND MAINTAIN RECORDS OF INSPECTIONS IN ACCORDANCE WITH WDNR NR216 REQUIREMENTS.
- SILT FENCE SHALL BE INSTALLED IN THE LOCATIONS SHOWN ON THE CONSTRUCTION PLANS. SEDIMENT DEPOSITS SHALL BE REMOVED FROM BEHIND THE SILT FENCE WHEN DEPOSITS REACH A DEPTH OF 6 INCHES. THE SILT FENCE SHALL BE REPAIRED OR REPLACED AS NECESSARY TO MAINTAIN A BARRIER.
- FILTER FABRIC SHALL BE INSTALLED BENEATH INLET COVERS TO TRAP SEDIMENT PER INLET PROTECTION DETAIL IN THE LOCATIONS SHOWN ON THE CONSTRUCTION PLANS.
- EROSION CONTROL MEASURES SHALL BE MAINTAINED ON A CONTINUING BASIS UNTIL SITE IS FULLY STABILIZED.
- PERIODIC STREET SWEEPING SHALL BE COMPLETED TO MAINTAIN ADJACENT STREETS FREE OF DUST AND DIRT.
- SILT FENCE SHALL BE INSTALLED IN HORSESHOE FASHION AROUND ANY TOPSOIL AND FILL STOCKPILES.
- SITE DEWATERING. WATER PUMPED FROM THE SITE SHALL BE TREATED BY SEDIMENT BASINS OR OTHER APPROPRIATE MEASURES SPECIFIED IN THE WISCONSIN DEPARTMENT OF NATURAL RESOURCES TECHNICAL STANDARDS. WATER MAY NOT BE DISCHARGED IN A MANNER THAT CAUSES EROSION OF THE SITE, ADJACENT SITES, OR RECEIVING CHANNELS.
- WASTE AND MATERIAL DISPOSAL. ALL WASTE AND UNUSED BUILDING MATERIALS (INCLUDING GARBAGE, DEBRIS, CLEANING WASTES, WASTEWATER, TOXIC MATERIALS, OR HAZARDOUS MATERIALS) SHALL BE PROPERLY DISPOSED AND NOT ALLOWED TO BE CARRIED OFF-SITE BY RUNOFF OR WIND.
- TRACKING. EACH SITE SHALL HAVE GRAVELED ROADS, ACCESS DRIVES AND PARKING AREAS OF SUFFICIENT WIDTH AND LENGTH TO PREVENT SEDIMENT FROM BEING TRACKED ONTO PUBLIC OR PRIVATE ROADWAYS. ANY SEDIMENT REACHING A PUBLIC OR PRIVATE ROAD SHALL BE REMOVED BY STREET CLEANING, TO THE SATISFACTION OF THE MUNICIPALITY, BEFORE THE END OF EACH WORKDAY. FLUSHING MAY NOT BE USED UNLESS SEDIMENT WILL BE CONTROLLED BY A SEDIMENT BASIN OR PRACTICE SPECIFIED IN THE WISCONSIN DEPARTMENT OF NATURAL RESOURCES TECHNICAL STANDARDS. NOTIFY MUNICIPALITY OF ANY CHANGES IN STABILIZED CONSTRUCTION ENTRANCE LOCATION.
- SEDIMENT CLEANUP. ALL OFF-SITE SEDIMENT DEPOSITS OCCURRING AS A RESULT OF A STORM EVENT SHALL BE CLEANED UP BY THE END OF THE NEXT WORKDAY. ALL OTHER OFF-SITE SEDIMENT DEPOSITS OCCURRING AS A RESULT OF CONSTRUCTION ACTIVITIES SHALL BE CLEANED UP BY THE END OF THE WORKDAY.
- ALL DISTURBED GROUND LEFT INACTIVE FOR SEVEN OR MORE DAYS SHALL BE STABILIZED BY TEMPORARY OR PERMANENT SEEDING, MULCHING, SODDING, COVERING WITH TARPS, OR EQUIVALENT PRACTICE FOUND IN THE WISCONSIN DEPARTMENT OF NATURAL RESOURCES TECHNICAL STANDARD. IF TEMPORARY SEEDING IS USED, A PERMANENT COVER SHALL ALSO BE REQUIRED AS PART OF THE FINAL SITE STABILIZATION. SEEDING OR SODDING SHALL BE REQUIRED AS PART OF THE FINAL SITE STABILIZATION.
- SOIL OR DIRT STORAGE PILES SHALL BE LOCATED A MINIMUM OF TWENTY-FIVE FEET FROM ANY DOWNSLOPE ROAD, LAKE, STREAM, WETLAND, OR DRAINAGE CHANNEL. STRAW BALE OR FILTER FABRIC FENCES SHALL BE PLACED ON THE DOWN SLOPE SIDE OF THE PILES. IF REMAINING FOR MORE THAN THIRTY DAYS, PILES SHALL BE STABILIZED BY MULCHING, VEGETATIVE COVER, TARPS OR OTHER MEANS.
- WHEN THE DISTURBED AREA HAS BEEN STABILIZED BY PERMANENT VEGETATION OR OTHER MEANS, TEMPORARY PRACTICES, SUCH AS FILTER FABRIC FENCES, STRAW BALES, SEDIMENT AND SEDIMENT TRAPS, FOUND IN THE WISCONSIN DEPARTMENT OF NATURAL RESOURCES TECHNICAL STANDARDS SHALL BE REMOVED.
- NOTIFY THE LOCAL MUNICIPALITY HAVING JURISDICTION WITHIN TWO WORKING DAYS OF COMMENCING ANY LAND DEVELOPMENT OR LAND DISTURBING ACTIVITY.
- OBTAIN PERMISSION FROM THE LOCAL MUNICIPALITY HAVING JURISDICTION PRIOR TO MODIFYING THE EROSION CONTROL PLAN.
- REPAIR ANY SILTATION OR EROSION DAMAGE TO ADJOINING SURFACES AND DRAINAGE WAYS RESULTING FROM LAND DEVELOPMENT OR LAND DISTURBING ACTIVITIES.
- KEEP A COPY OF THE EROSION CONTROL PLAN ON SITE.
- CONTRACTOR SHALL, TO THE EXTENT POSSIBLE, MINIMIZE DISTURBANCE OF EXISTING VEGETATION DURING CONSTRUCTION.
- CONTRACTOR SHALL, TO THE EXTENT POSSIBLE, MINIMIZE COMPACTION OF TOPSOIL AND PRESERVE TOPSOIL IN GREENSPACE AREAS.
- WASH WATER FROM VEHICLES AND WHEEL WASHING SHALL BE CONTAINED AND TREATED PRIOR TO DISCHARGE.
- CONTRACTOR SHALL MAINTAIN SPILL KITS ON-SITE.
- PERMANENT TURF SEEDING OF DISTURBED AREA MUST OCCUR PRIOR TO SEPTEMBER 15TH. IF ADEQUATE TIME IS NOT AVAILABLE TO APPLY PERMANENT SEEDING PRIOR TO SEPTEMBER 15TH, THEN DISTURBED AREAS SHALL BE TEMPORARILY SEEDED WITH AN ANNUAL RYE GRASS PER WDNR TECHNICAL STANDARD 1059, WHERE THE TEMPORARY SEEDING MUST OCCUR PRIOR TO OCTOBER 15TH.
- IF TEMPORARY SEEDING IS NOT COMPLETED BY OCTOBER 15TH, APPLY SOIL STABILIZERS AND DORMANT SEED TO DISTURBED AREA PER WDNR TECHNICAL STANDARD 1050. INSPECT ANIONIC PAM APPLICATION AT A MINIMUM FREQUENCY OF EVERY TWO MONTHS AND REAPPLY AS NECESSARY

CONSTRUCTION SEQUENCE FOR EROSION CONTROL INCLUDES:

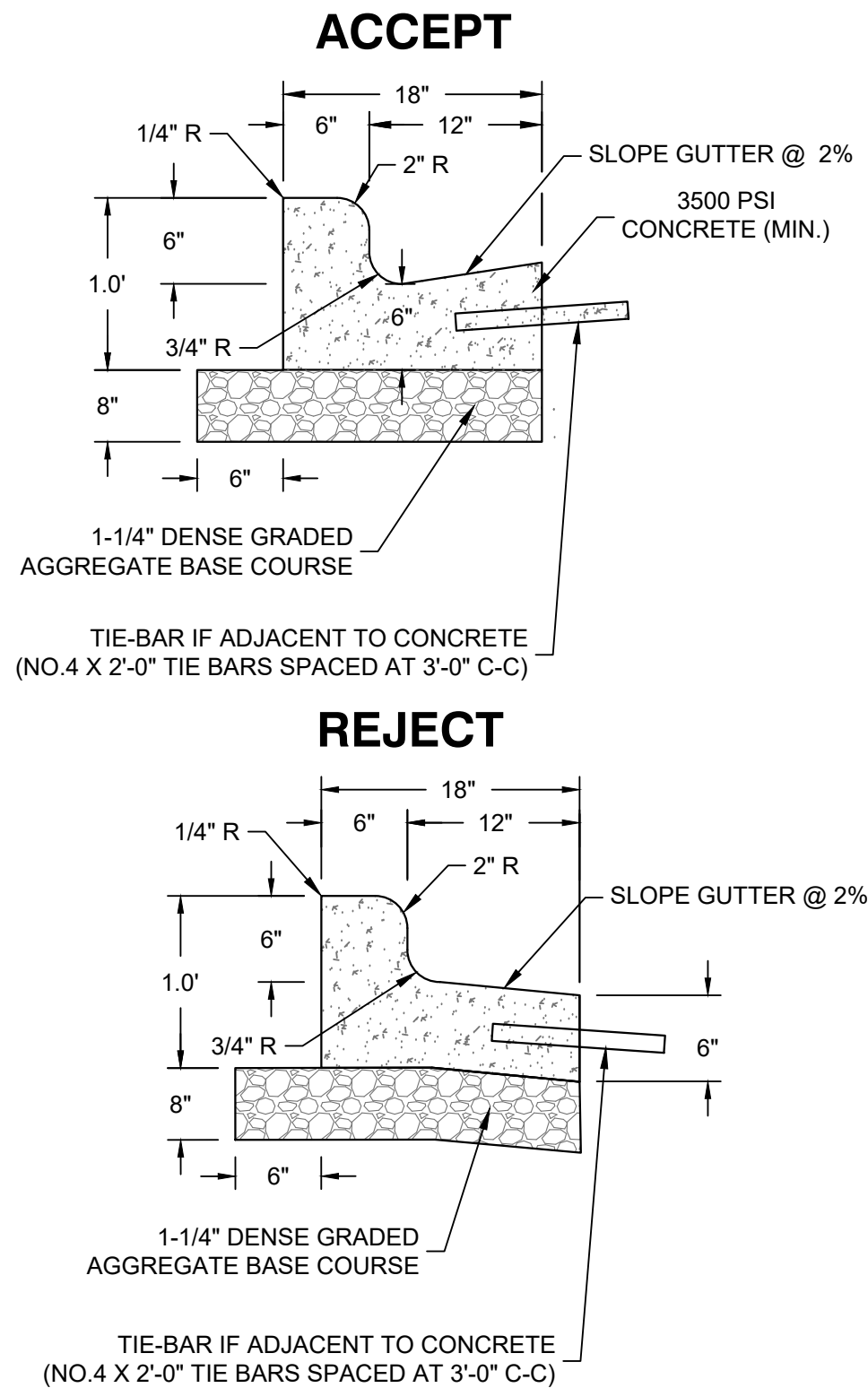
- INSTALL STABILIZED CONSTRUCTION ENTRANCE.
- INSTALL SILT FENCING AND INLET PROTECTION.
- INITIATE STOCKPILING OF IMPORTED MATERIAL. PLACE SILT FENCE AROUND STOCKPILE(S).
- STRIP TOPSOIL FROM STORM WATER BASIN LOCATION AND STOCKPILE.
- CONSTRUCT STORM WATER BASIN AND INSTALL TEMPORARY OUTLET AND EMERGENCY OVERFLOW. BASIN IS TO BE USED AS A SEDIMENTATION BASIN DURING THE COURSE OF CONSTRUCTION.
- CONSTRUCT DIVERSION SWALES. DIRECT RUNOFF TO STORM BASIN. INSTALL ASSOCIATED DITCH CHECKS.
- INSTALL RIP-RAP AT STORM WATER BASIN AS SHOWN ON THE PLANS.
- STRIP TOPSOIL FROM REMAINDER OF SITE IN A PROGRESSIVE MANNER, AND STOCKPILE.
- PERFORM ROUGH SITE GRADING. STABILIZE FINISHED AREAS AS THE WORK PROGRESSES. USE EROSION MATTING WHERE CALLED FOR ON THE PLANS. PER WDNR TECHNICAL STANDARD 1059: AREAS THAT RECEIVE TEMPORARY SEEDING SHALL HAVE A MINIMUM TOPSOIL DEPTH OF 2 INCHES. AREAS THAT RECEIVE PERMANENT SEEDING SHALL HAVE A MINIMAL TOPSOIL DEPTH OF 4 INCHES.
- PREPARE BUILDING PAD AND BEGIN FOUNDATIONS WORK FOR BUILDING.
- INSTALL UTILITIES. INSTALL ANY ADDITIONAL INLET PROTECTION ON NEW STORM SEWER AND INSTALL RIP-RAP AT NEW STORM SEWER OUTFALLS.
- REMOVE TEMPORARY OUTLET CONTROL STRUCTURE ON BASIN AND INSTALL PAVEMENTS.
- STABILIZE AREAS REMAINING AREAS WITHIN 7 DAYS OF COMPLETION OF FINAL GRADING AND TOPSOILING.
- REMOVE EXCESS SEDIMENT FROM STORMWATER BASINS AND RETURN BASINS TO THEIR DESIGN DIMENSIONS AND VOLUMES.
- REMOVE EROSION CONTROL MEASURES ONLY WHEN SITE IS FULLY STABILIZED.

11:22

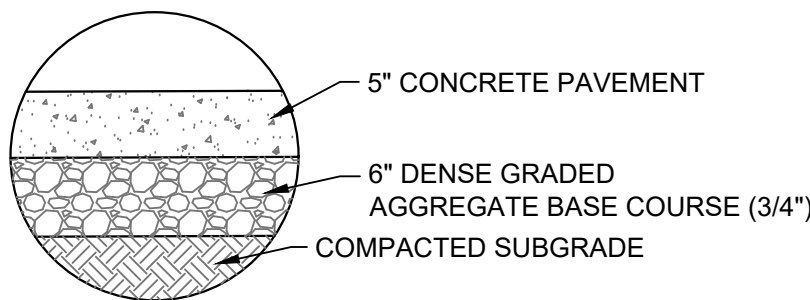
JRICHO

C401

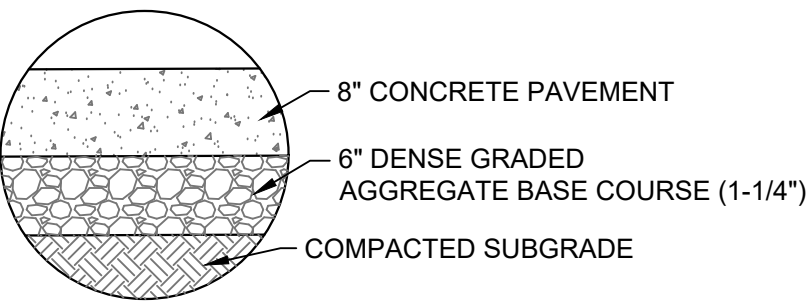
21393



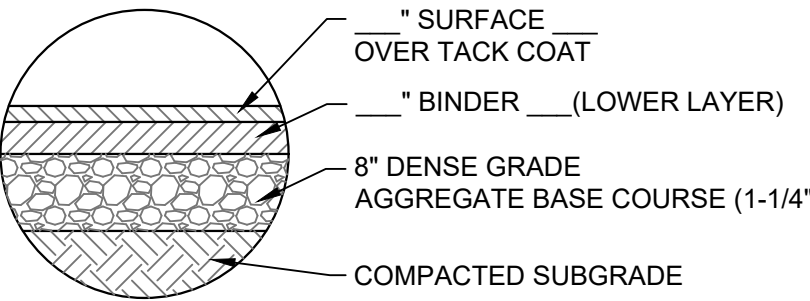
A 18 INCH CONCRETE CURB AND GUTTER
SCALE: NTS



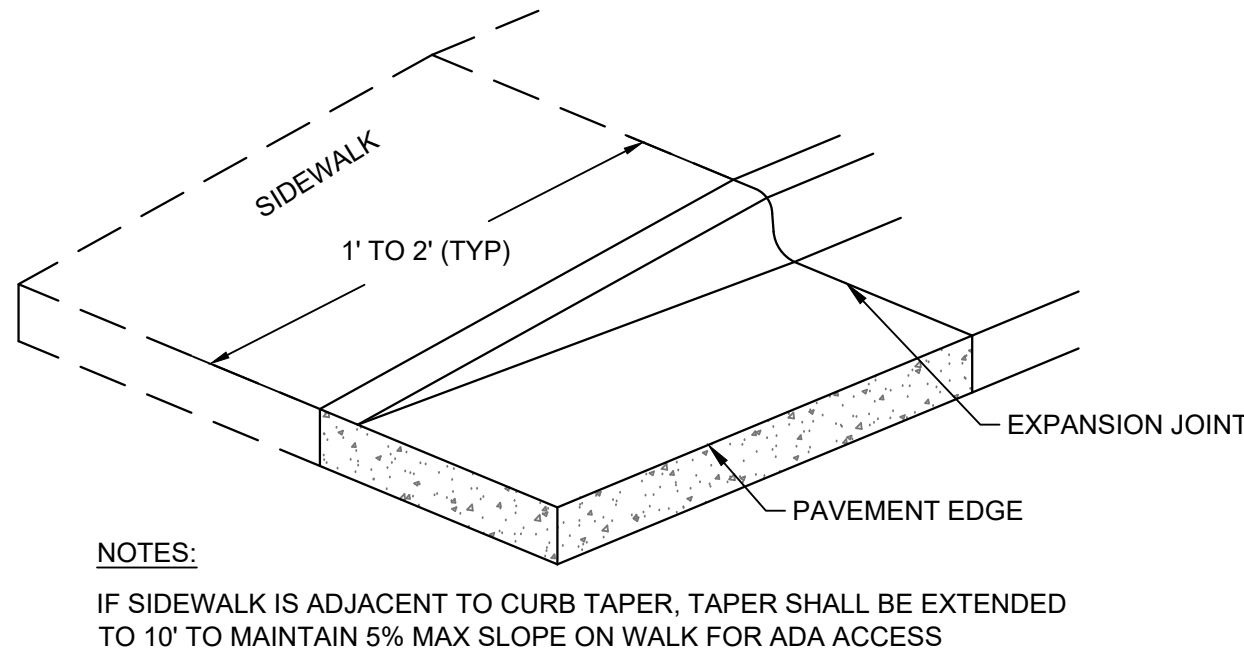
B CONCRETE SIDEWALK SECTION
SCALE: NTS



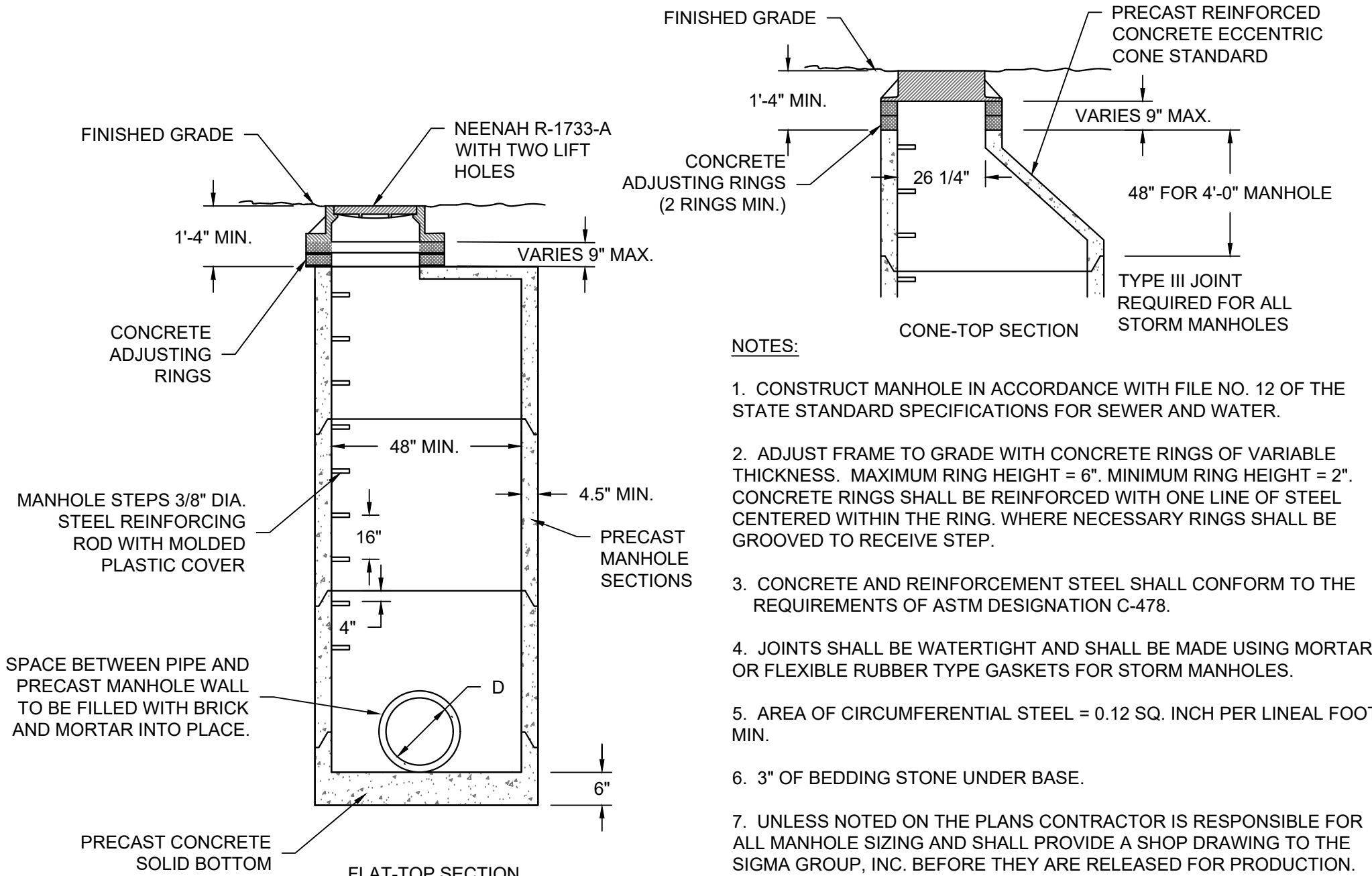
C CONCRETE PAVEMENT SECTION
SCALE: NTS



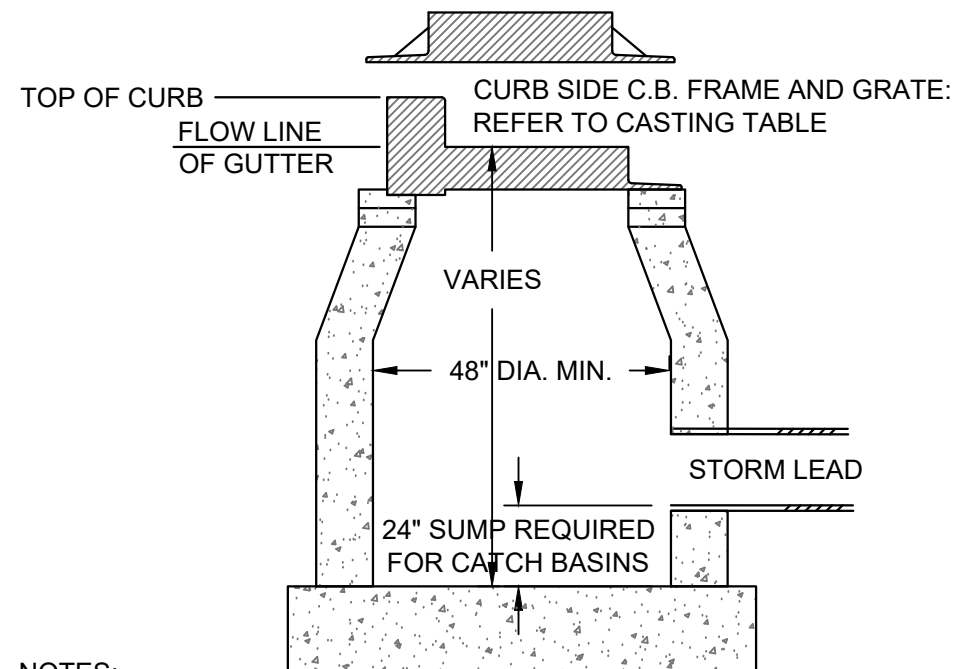
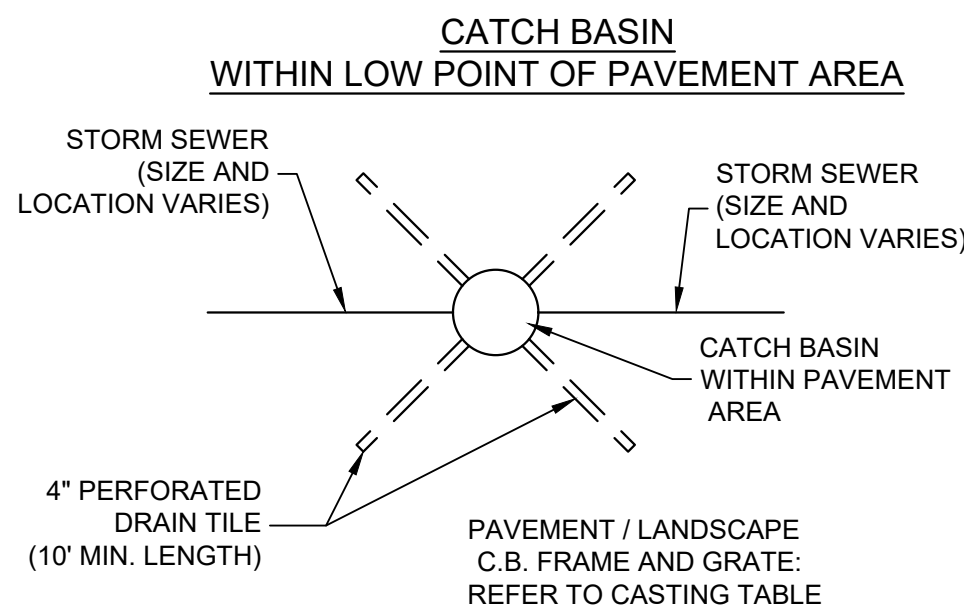
D ASPHALT PAVEMENT SECTION
SCALE: NTS



E CURB TAPER
SCALE: NTS

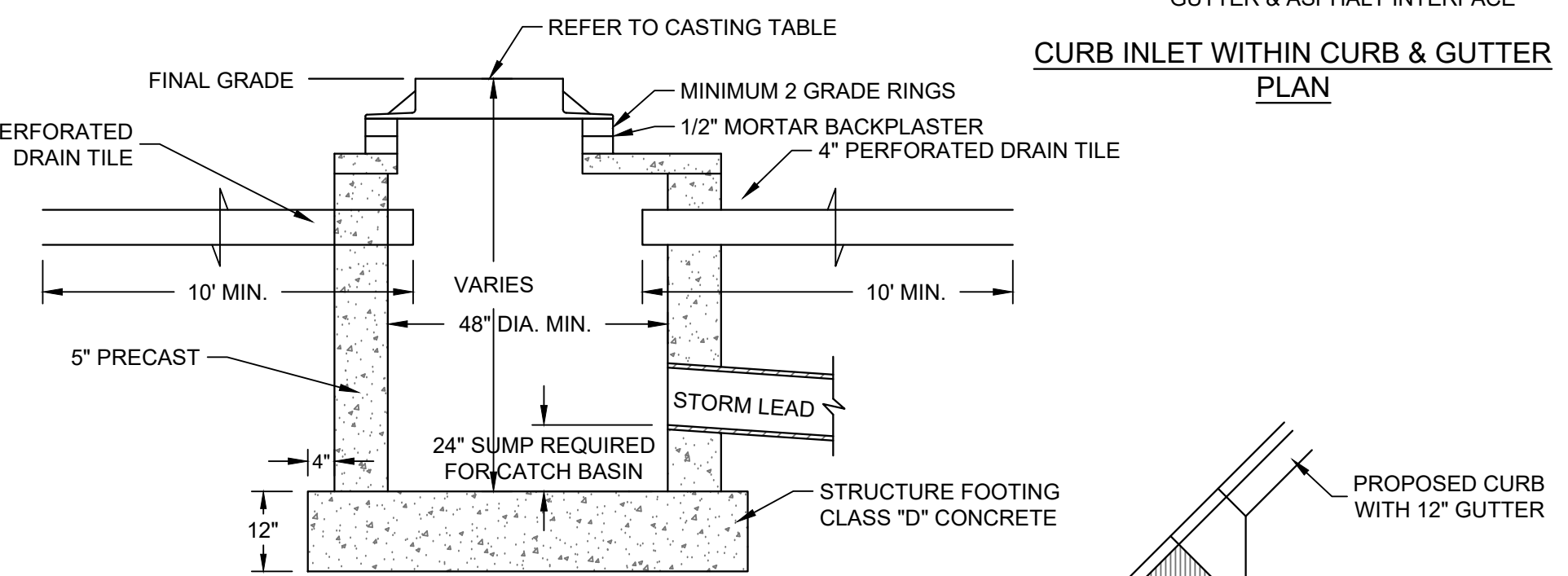
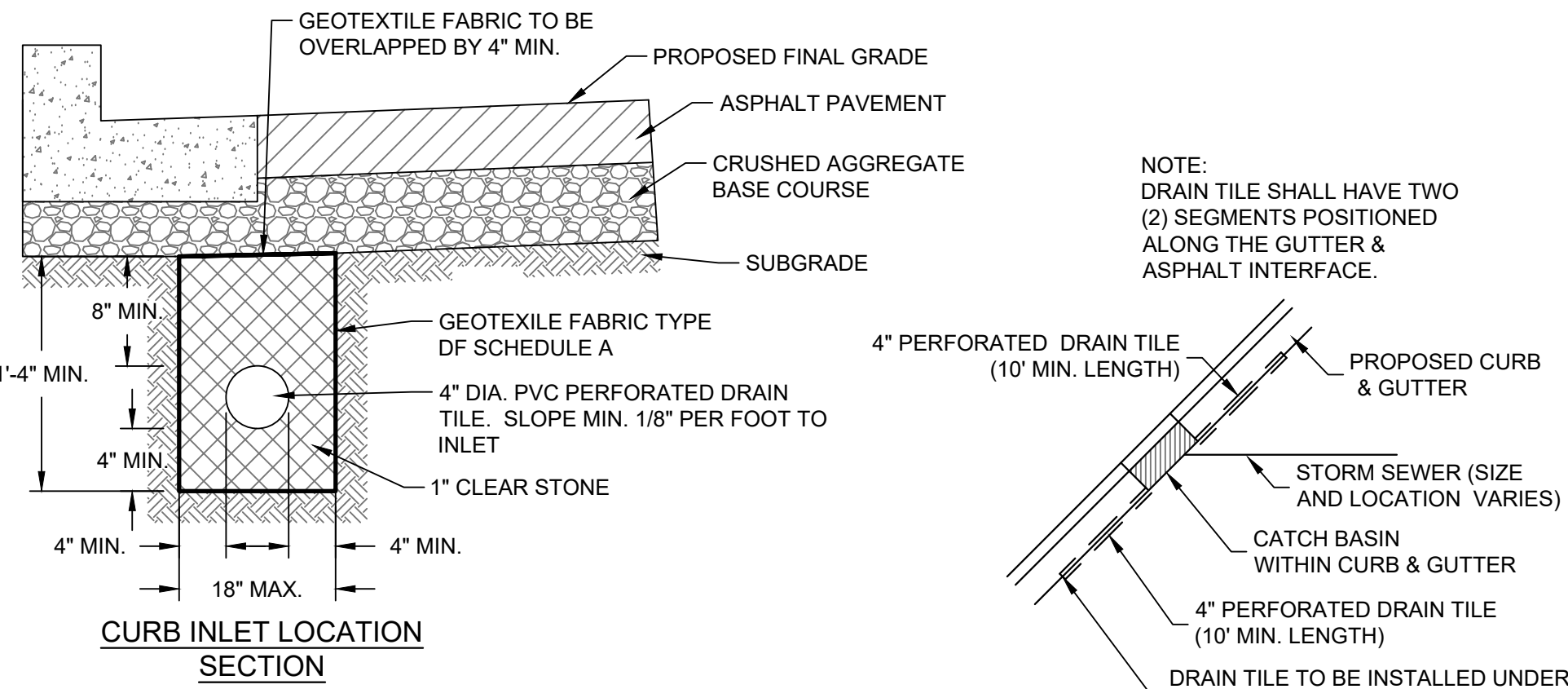


G PRECAST STORM MANHOLE
SCALE: NTS

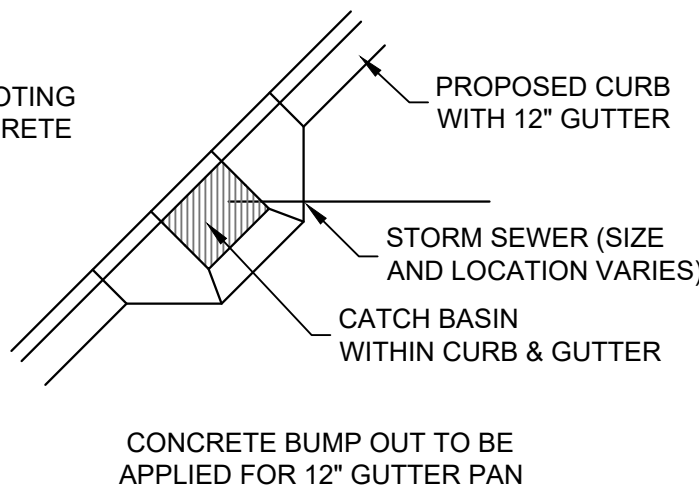


- NOTES:**
1. ADJUST FRAME TO GRADE WITH CONCRETE RINGS OF VARIABLE THICKNESS. MAXIMUM RING HEIGHT = 6". MINIMUM RING HEIGHT = 2". CONCRETE RINGS SHALL BE REINFORCED WITH ONE LINE OF STEEL CENTERED WITHIN THE RING.
 2. CONCRETE AND REINFORCEMENT STEEL SHALL CONFORM TO THE REQUIREMENTS OF ASTM DESIGNATION C-478.
 3. 3" BEDDING OF STONE UNDER BASE REQUIRED ON WET SUB-GRADE.
 4. UNLESS NOTED ON THE PLANS CONTRACTOR IS RESPONSIBLE FOR ALL CATCH BASIN SIZING AND SHALL PROVIDE A SHOP DRAWING TO THE SIGMA GROUP, INC. BEFORE THEY ARE RELEASED FOR PRODUCTION.

F INLET AND CATCH BASIN
SCALE: NTS



CATCH BASIN / INLET CASTING TABLE						
IF 18" CURB & GUTTER			IF 24" CURB & GUTTER		IF 30" CURB AND GUTTER	
	CASTING	GRATE	CASTING	GRATE	CASTING	GRATE
CURB INLET	NEENAH R-3067	A	NEENAH R-3067	A	NEENAH R-3228H	C
AREA INLET	NEENAH R-2050	C				



114TH AND BLUEMOUND
11430 - 11400 BLUEMOUND ROAD
WAUWATOSA, WISCONSIN

DETAILS

PRELIMINARY
NOT FOR
CONSTRUCTION

SCALE:	
PROJECT NO:	21393
DESIGN DATE:	----
PLOT DATE:	1/31/2023
DRAWN BY:	----
CHECKED BY:	----
APPROVED BY:	----
SHEET NO:	

C401

