

# UWCU MAYFAIR ITM RETROFIT

## SITE LOCATION MAP



2365 N MAYFAIR RD  
WAUWATOSA, WI 53226

## PROJECT DIRECTORY

**DESIGN-BUILDER**  
ICONICA, INC  
901 DEMING WAY, SUITE 102  
MADISON, WISCONSIN 53717  
PHONE: (608) 664-3500

## SHEET INDEX

BID PACKAGE #1	CURRENT REVISION	SHEET #	SHEET TITLE

General			
DRB	A001P	COVER SHEET	
DRB	A100P	SURVEY	
Architectural Demo			
DRB	AD201P	FIRST FLOOR DEMO PLAN	
DRB	AD801P	FIRST FLOOR REFLECTED CEILING DEMO PLAN	
Architectural			
DRB	A201P	FIRST FLOOR PLAN - DRIVE UP AREA	
DRB	A301P	BUILDING ELEVATIONS - EXISTING CONDITIONS	
DRB	A630P	INTERIOR ELEVATIONS	
DRB	A801P	FIRST FLOOR REFLECTED CEILING PLAN	
DRB	A901P	PHOTOS & RENDERINGS	

## ABBREVIATION LEGEND

ALT	ALTERNATIVE / ALTERNATE	NA	NOT APPLICABLE
ARCH	ARCHITECT / ARCHITECTURAL	NIC	NOT IN CONTRACT
		NTS	NOT TO SCALE
BLDG	BUILDING	OC	ON CENTER(S)
BLKG	BLOCKING	OH	OVERHEAD
BO	BOTTOM OF	OPNG	OPENING
		OPP	OPPOSITE
CJ	CONSTRUCTION JOINT / CONTROL JOINT	QTY	QUANTITY
CLR	CLEAR(ANCE)		
CMU	CONCRETE MASONRY UNIT	RAD	RADIUS
		RD	ROOF DRAIN
DIA	DIAMETER	REC	RECESSED
DIM	DIMENSION	REF	REFERENCE / REFER TO
		REQD	REQUIRED
EA	EACH	RO	ROUGH OPENING
EJ	EXPANSION JOINT	RTU	ROOF TOP UNIT
EQ	EQUAL		
		SCHED	SCHEDULE
FD	FLOOR DRAIN	SF	SQUARE FOOT/FEET
FE / FEC	FIRE EXTINGUISHER (CABINET)	SIM	SIMILAR
FF / FFE	FINISH FLOOR (ELEVATION)	SPEC	SPECIFICATION
FF&E	FIXTURES, FURNISHINGS & EQUIPMENT	SUSP	SUSPENDED
		T.O.	TOP OF
GC	GENERAL CONTRACTOR	TYP	TYPICAL
GYP	GYPSUM WALL BOARD		
		UC	UNDER COUNTER
HB	HOSE BIBB	UNO	UNLESS NOTED OTHERWISE
HDWR	HARDWARE	UPS	UNINTERRUPTED POWER SUPPLY
HVAC	HEATING, VENTILATING & AIR CONDITIONING		
		VERT	VERTICAL
INSUL	INSULATION	VIF	VERIFY IN FIELD
INT	INTERIOR		
		W/	WITH
KO	KNOCK-OUT	W/O	WITHOUT
MAX	MAXIMUM	#	NUMBER / POUND
MIN	MINIMUM	&	AND
MTG HGT	MOUNTING HEIGHT	@	AT

## SYMBOL / ANNOTATION LEGEND:

	BUILDING ELEVATION VIEW NUMBER SHEET NUMBER
	INTERIOR ELEVATION VIEW NUMBER SHEET NUMBER
	BUILDING SECTION VIEW NUMBER SHEET NUMBER
	WALL / DETAIL SECTION VIEW NUMBER SHEET NUMBER
	DETAIL CALLOUT VIEW NUMBER SHEET NUMBER
	WALL / PARTITION TYPE TAG PARTITION TYPE SOUND WALL INDICATOR (IF APPLICABLE) WALL RATING IN HRS (IF APPLICABLE)
	PARTIAL HEIGHT PARTITION TYPE TAG PARTITION TYPE FINISHED WALL HEIGHT (ABOVE FINISHED FLOOR)
	WINDOW TYPE TAG
	STOREFRONT TYPE TAG
	DOOR TAG
	REVISION NUMBER AND CLOUD
	DIMENSION TO FACE / EDGE
	DIMENSION TO GRIDLINE

## UWCU MAYFAIR ITM RETROFIT

2365 N MAYFAIR RD  
WAUWATOSA, WI 53226

UW CREDIT UNION  
MAYFAIR BRANCH

### ISSUE DATES:

Issue	Description	Date
DRB	DRB	08-07-25

This document contains confidential or proprietary information of Iconica. Neither the document nor the information herein is to be reproduced, distributed, used or disclosed, either in whole or in part, except as specifically authorized by Iconica.

Sheet Title  
COVER SHEET

Project Number: 20240980  
Sheet Number

A001P

Copyright © 2024 by Iconica Inc. (All Rights Reserved)

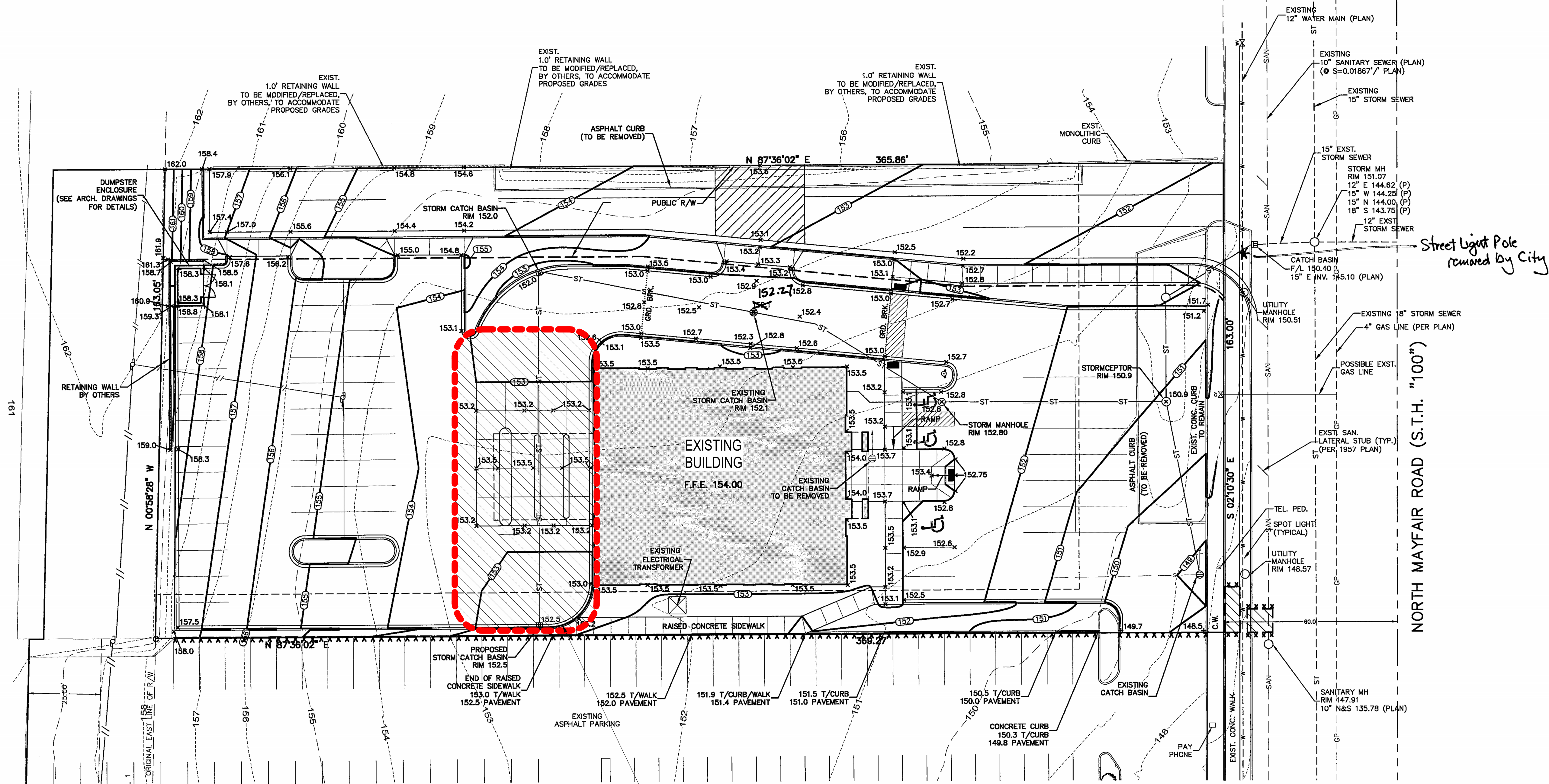
7/25/2025 12:18:00 PM





NOTES:

1. CONTRACTOR TO VERIFY, SIZE, LOCATION AND ELEVATION OF EXISTING UTILITY WHERE A CONNECTION IS BEING PROPOSED, PRIOR TO ANY UTILITY CONSTRUCTION. REPORT ANY DISCREPANCIES TO DESIGN ENGINEER.
2. ELEVATIONS ARE REFERENCED TO THE CITY OF WAUWATOSA LOCAL DATUM.
3. PROJECT BENCHMARK: NW FLANGE BOLT OF FIRE HYDRANT LOCATED AT THE SOUTHEAST CORNER OF 107TH STREET AND WEST NORTH AVENUE, ELEVATION: 132.11.
4. GRADES WITHIN THE PROPOSED PUBLIC RIGHT OF WAY (SEE HATCHED AREA) ARE FOR REFERENCE ONLY. REFER TO THE PAVING PLAN AND PROFILE DRAWINGS, DONE BY OTHERS, FOR DETAILED CONSTRUCTION SPECIFICATIONS.

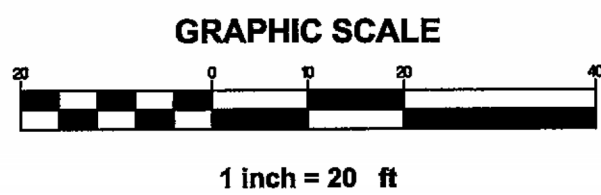


CALL DIGGERS HOTLINE  
1-800-242-8011  
TOLL FREE  
WE GUARANTEE 100% PROTECTION OF YOUR UTILITIES  
WHEN YOU CALL BEFORE YOU DIG. NO DAMAGE TO YOUR UTILITIES.  
MILWAUKEE AREA 226-1181

UNDERGROUND UTILITIES ARE NOT SHOWN  
ON THIS PLAN. THE LOCATION OF ANY UTILITIES  
SHOWN ON THIS PLAN IS NOT GUARANTEED.

THE LOCATION OF EXISTING UTILITY INSTALLATIONS ARE  
FOR REFERENCE ONLY. THE LOCATION OF ANY UTILITIES  
SHOWN ON THIS PLAN IS NOT GUARANTEED.

AREA OF  
PROPOSED WORK



LEGEND	
*****	SAWCUT LINE MATCH EXISTING PAVEMENT
-----1014-----	EXISTING CONTOUR
-----1014-----	PROPOSED CONTOUR
-----1014.1 x-----	PROPOSED ELEVATION
-----ST-----	EXISTING STORM SEWER
-----ST-----	PROPOSED STORM SEWER

NOTE: ALL ELEVATIONS ALONG PROPOSED CURB ARE AT THE BOTTOM OF CURB.

## UWCU MAYFAIR ITM RETROFIT

2365 N MAYFAIR RD  
WAUWATOSA, WI 53226

UW CREDIT UNION  
MAYFAIR BRANCH

ISSUE DATES:  
Issue Description Date  
DRB DRB 08-07-25

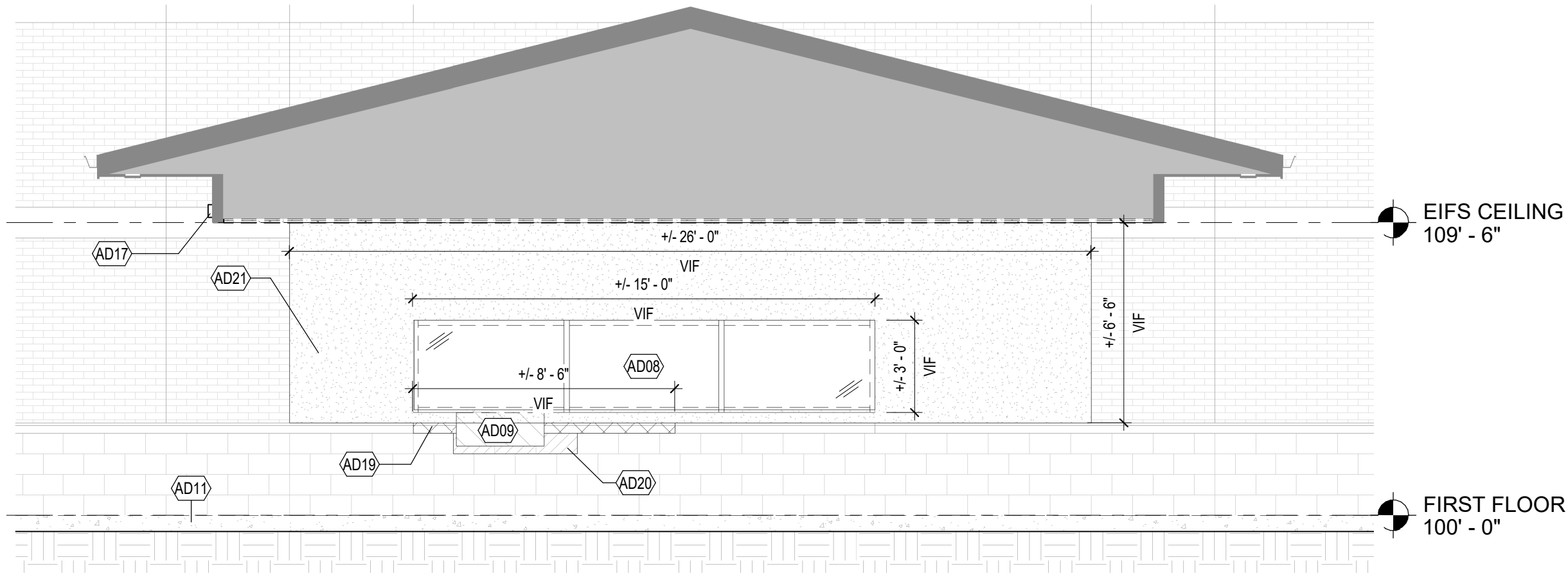
This document contains confidential or proprietary information of Iconica. Neither the document nor the information herein is to be reproduced, distributed, used or disclosed, either in whole or in part, except as specifically authorized by Iconica.

Sheet Title  
SURVEY

Project Number: 20240980  
Sheet Number

# A100P



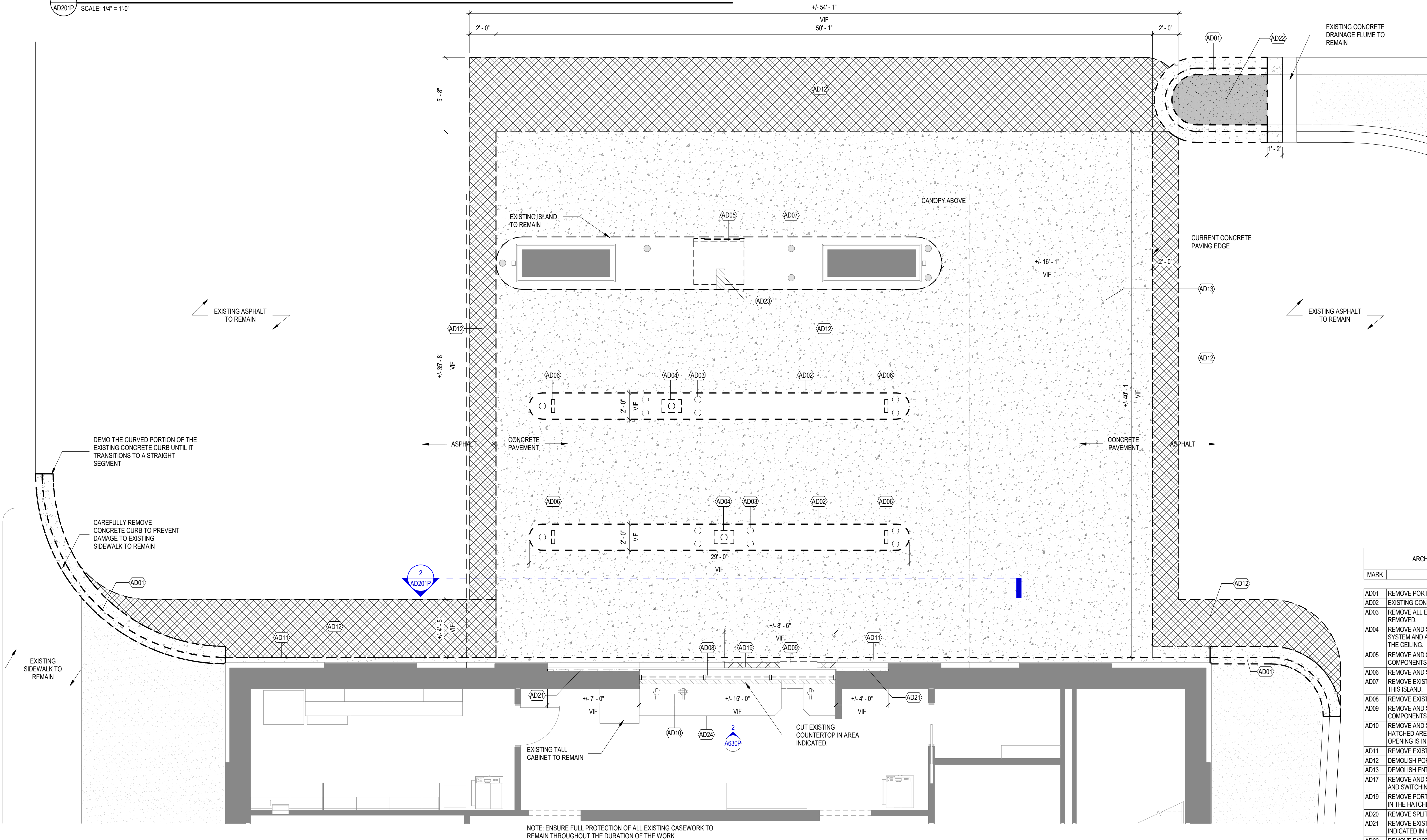


2 FRONT ELEVATION - DEMO ELEVATION  
SCALE: 1/4" = 1'-0"

ARCHITECTURAL DEMO GENERAL NOTES

1. COORDINATE ALL ITEMS TO BE SALVAGED WITH BUILDING OWNER.

--- EXISTING TO BE REMOVED  
--- EXISTING TO REMAIN



ARCHITECTURAL DEMOLITION KEYED NOTES	
MARK	DESCRIPTION
AD01	REMOVE PORTION OF THE EXISTING CONCRETE CURB AND GUTTER
AD02	EXISTING CONCRETE ISLAND TO BE REMOVED
AD03	REMOVE ALL EXISTING BOLLARDS LOCATED ON THE ISLAND TO BE REMOVED
AD04	REMOVE AND SALVAGE ALL EXISTING DRIVE-UP PNEUMATIC TUBE SYSTEM AND ASSOCIATED COMPONENTS, INCLUDING THOSE ABOVE THE CEILING.
AD05	REMOVE AND SALVAGE THE EXISTING ATM AND ALL ASSOCIATED COMPONENTS (BY OWNER)
AD06	REMOVE AND SALVAGE EXISTING SIGNAGE
AD07	REMOVE EXISTING BOLLARD COVERS. TYPICAL FOR ALL BOLLARDS ON THIS ISLAND.
AD08	REMOVE EXISTING WINDOW
AD09	REMOVE AND SALVAGE EXISTING DEAL DRAWER AND ALL ASSOCIATED COMPONENTS.
AD10	REMOVE AND SALVAGE EXISTING COUNTERTOP. CUT AS INDICATED IN HATCHED AREAS. REINSTALL IN ORIGINAL LOCATION AFTER WINDOW OPENING IS INFILLED.
AD11	REMOVE EXISTING CONCRETE CURB ADJACENT TO BUILDING
AD12	DEMOLISH PORTION OF EXISTING ASPHALT
AD13	DEMOLISH ENTIRE EXISTING CONCRETE PAVING AREA
AD17	REMOVE AND SALVAGE EXISTING OPEN/CLOSE ILLUMINATED SIGNS AND SWITCHING
AD19	REMOVE PORTION OF THE EXISTING CAST STONE SILL AS INDICATED IN THE HATCHED AREA
AD20	REMOVE SPLIT-FACE CMU UNITS AS INDICATED IN THE HATCHED AREA
AD21	REMOVE EXISTING EIFS SYSTEM DOWN TO CMU BACKUP. AS INDICATED IN HATCHED AREA
AD22	REMOVE EXISTING LANDSCAPE BED
AD23	PARTIALLY DEMOLISH EXISTING ISLAND TO ACCOMMODATE NEW ROUGH-INS AND ITM CONDENSATE DRAIN. REFER TO DETAILS ON SHEET 3/A001 & 3/A0201 FOR THE CORRECT LOCATION.
AD24	REMOVE AND SALVAGE ALL EXISTING BANK EQUIPMENT LOCATED BELOW THE COUNTERTOP, INCLUDING BUT NOT LIMITED TO UNDER-COUNTER STEEL DRAWERS AND TELLER CASH RECYCLER

1 FIRST FLOOR - DEMO PLAN  
SCALE: 1/4" = 1'-0"

UWCU MAYFAIR ITM RETROFIT

2365 N MAYFAIR RD  
WAUWATOSA, WI 53226

UW CREDIT UNION  
MAYFAIR BRANCH

ISSUE DATES:  
Issue Description Date  
DRB DRB 08-07-25

This document contains confidential or proprietary information of Iconica. Neither the document nor the information herein is to be reproduced, distributed, used or disclosed, either in whole or in part, except as specifically authorized by Iconica.

Sheet Title  
FIRST FLOOR DEMO  
PLAN

Project Number: 20240980

Sheet Number

AD201P

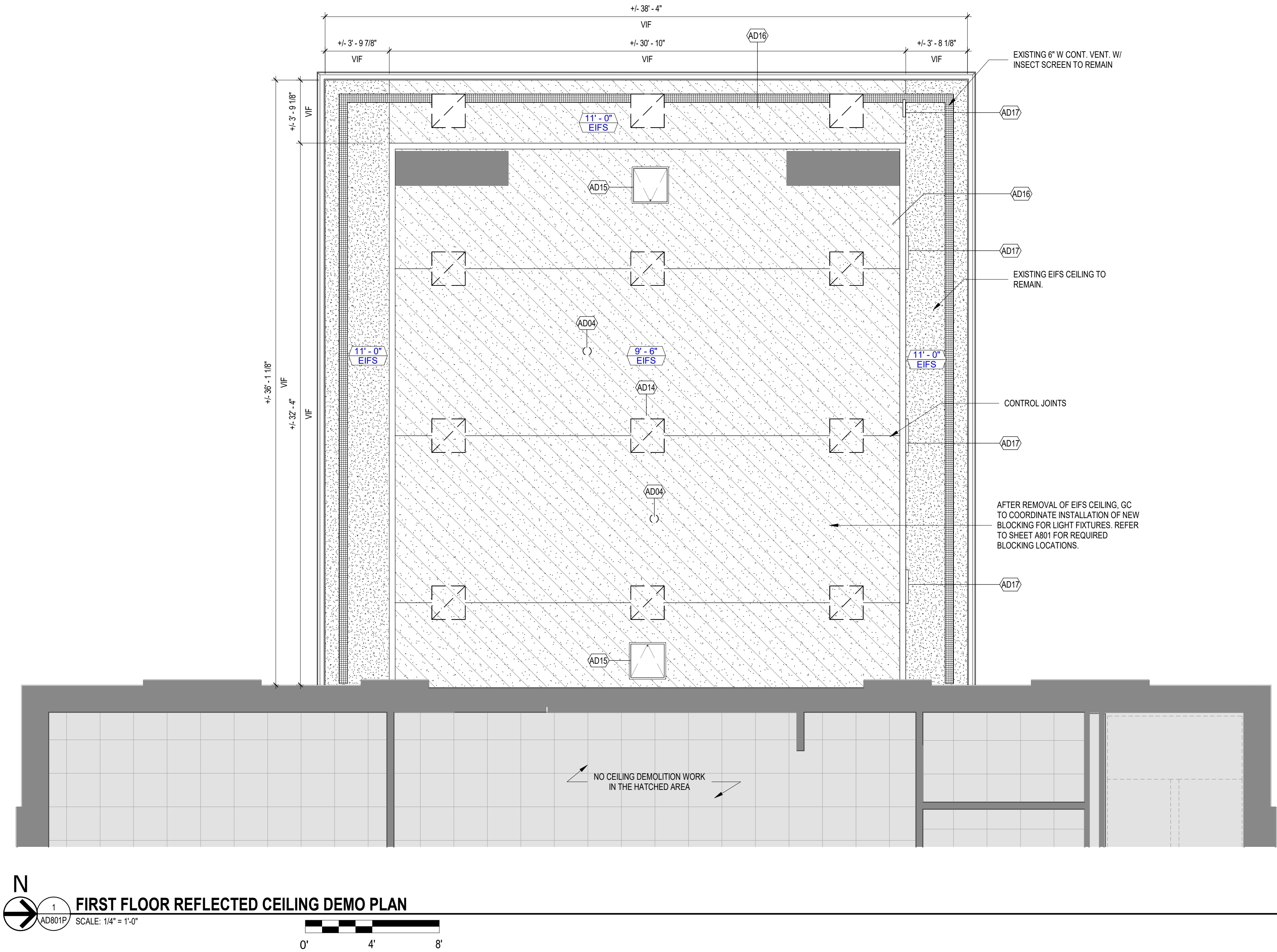


ARCHITECTURAL DEMOLITION KEYED NOTES	
MARK	DESCRIPTION
AD04	REMOVE AND SALVAGE ALL EXISTING DRIVE-UP PNEUMATIC TUBE SYSTEM AND ASSOCIATED COMPONENTS, INCLUDING THOSE ABOVE THE CEILING.
AD14	REMOVE ALL EXISTING 2X2 LIGHT FIXTURES FROM THE CEILING. SEE ELECTRICAL DRAWINGS FOR ADDITIONAL DETAILS
AD15	REMOVE AND SALVAGE EXISTING 24x24 ACCESS DOOR
AD16	REMOVE EXISTING EIFS CEILING AS INDICATED IN THE HATCHED AREA
AD17	REMOVE AND SALVAGE EXISTING OPEN/CLOSE ILLUMINATED SIGNS AND SWITCHING

ARCHITECTURAL DEMO GENERAL NOTES

1. COORDINATE ALL ITEMS TO BE SALVAGED WITH BUILDING OWNER.

- EXISTING EIFS CEILING TO REMAIN
- EXISTING EIFS CEILING TO BE REMOVED



UWCU MAYFAIR ITM RETROFIT

2365 N MAYFAIR RD  
WAUWATOSA, WI 53226

UW CREDIT UNION  
MAYFAIR BRANCH

ISSUE DATES:		
Issue	Description	Date
DRB	DRB	08-07-25

This document contains confidential or proprietary information of Iconica. Neither the document nor the information herein is to be reproduced, distributed, used or disclosed, either in whole or in part, except as specifically authorized by Iconica.

Sheet Title  
**FIRST FLOOR  
REFLECTED CEILING  
DEMO PLAN**

Project Number: 20240980

Sheet Number

**AD801P**





2365 N MAYFAIR RD  
WAUWATOSA, WI 53226

UW CREDIT UNION  
MAYFAIR BRANCH

## UWCU MAYFAIR ITM RETROFIT

ISSUE DATES:

Issue	Description	Date
DRB	DRB	08-07-25

This document contains confidential or proprietary information of Iconica. Neither the document nor the information herein is to be reproduced, distributed, used or disclosed, either in whole or in part, except as specifically authorized by Iconica.

Sheet Title  
**FIRST FLOOR PLAN -  
DRIVE UP AREA**

Project Number: 20240980

Sheet Number

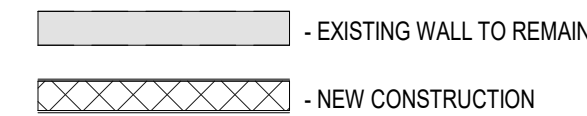
A201P

Copyright © 2024 by Iconica Inc. (All Rights Reserved)

## ARCHITECTURAL GENERAL NOTES:

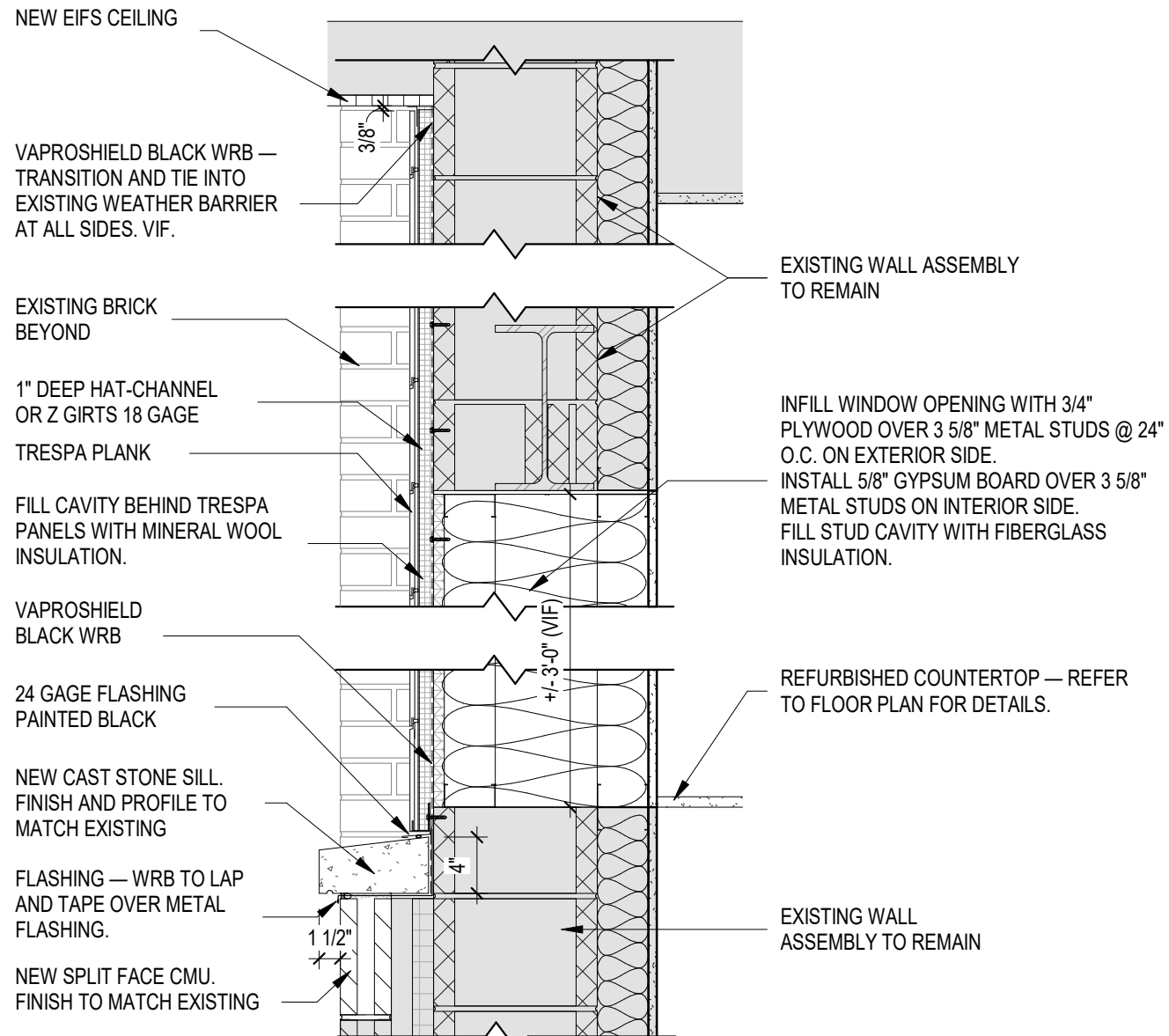
GENERAL NOTES APPLY TO ALL SHEETS.

1. COORDINATE ALL ITEMS TO BE SALVAGED WITH BUILDING OWNER



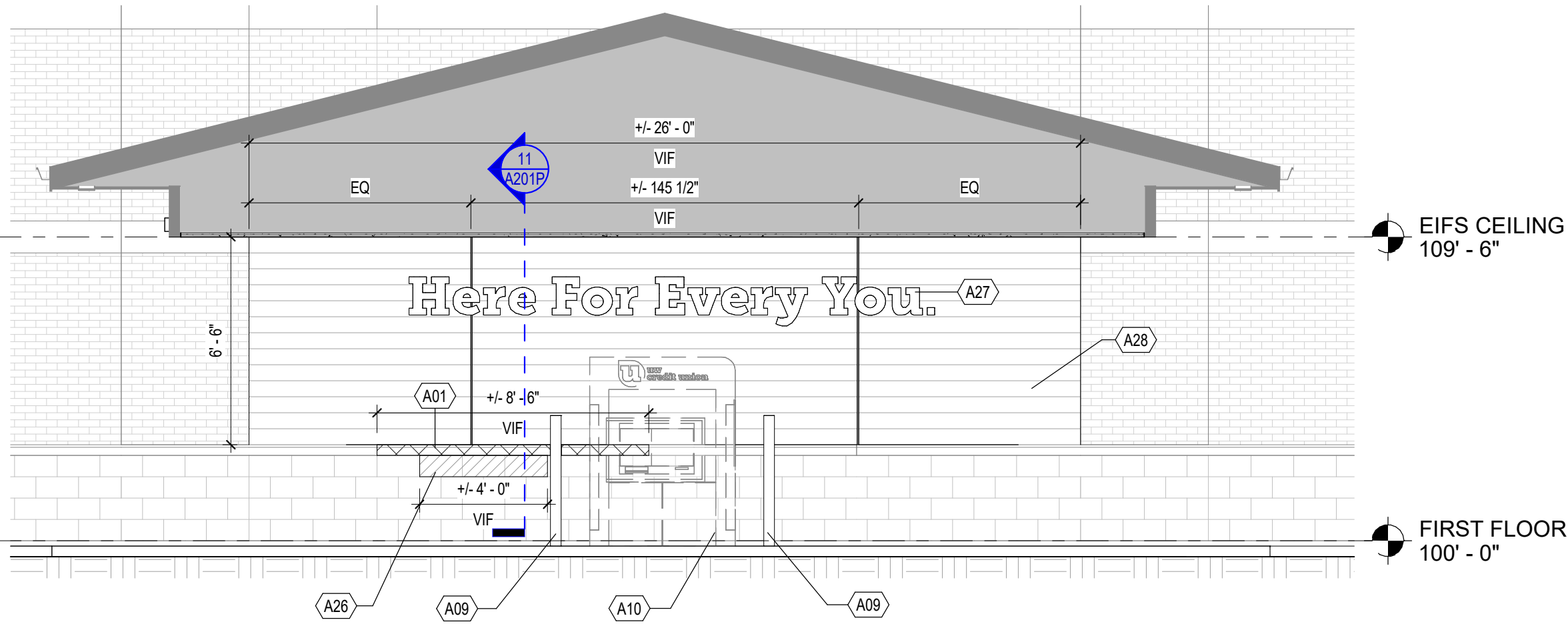
### WALL SECTION - PROPOSED

A201P SCALE: 1" = 1'-0"



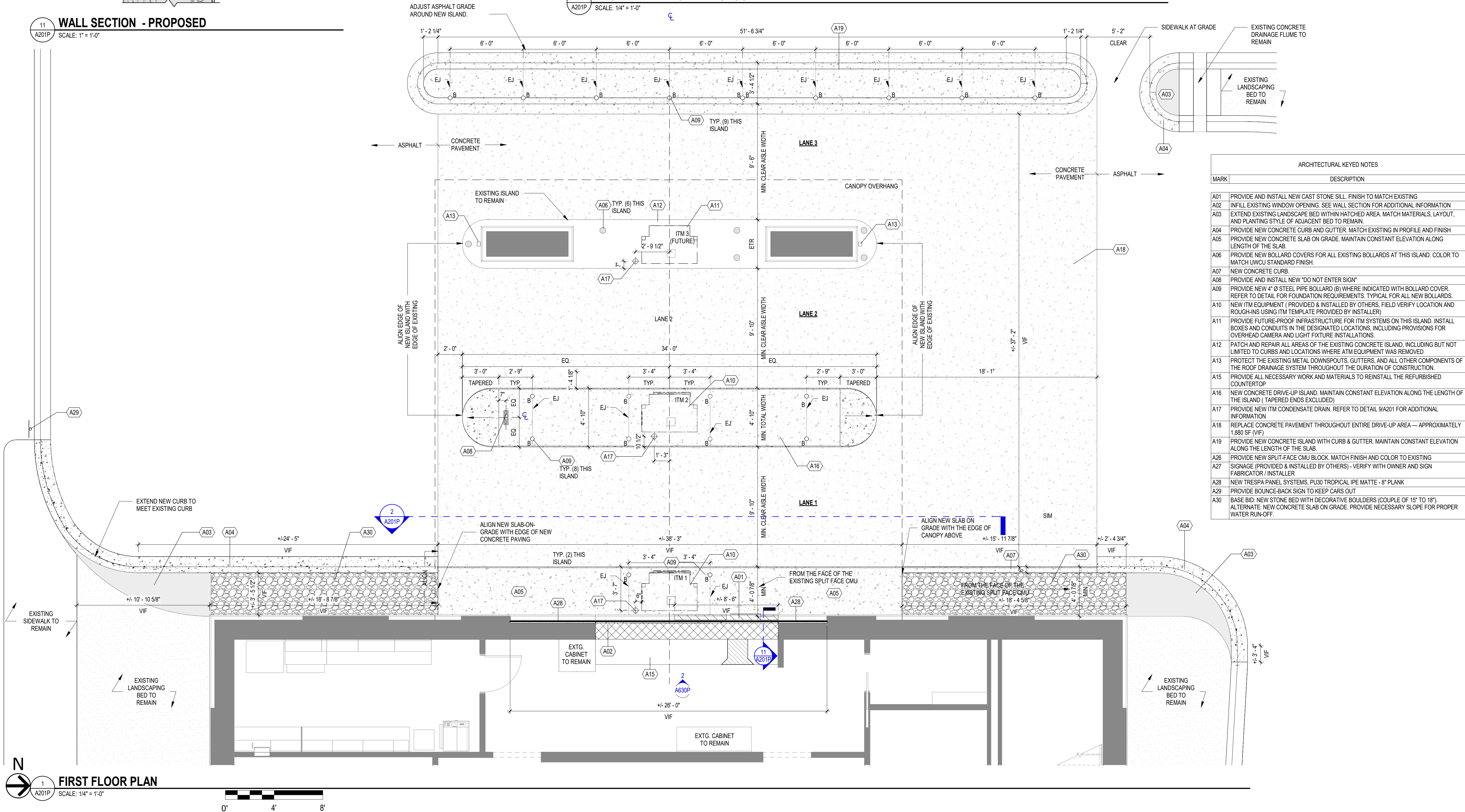
**FRONT ELEVATION - PROPOSED**

A201P SCALE: 1/4" = 1'-0"

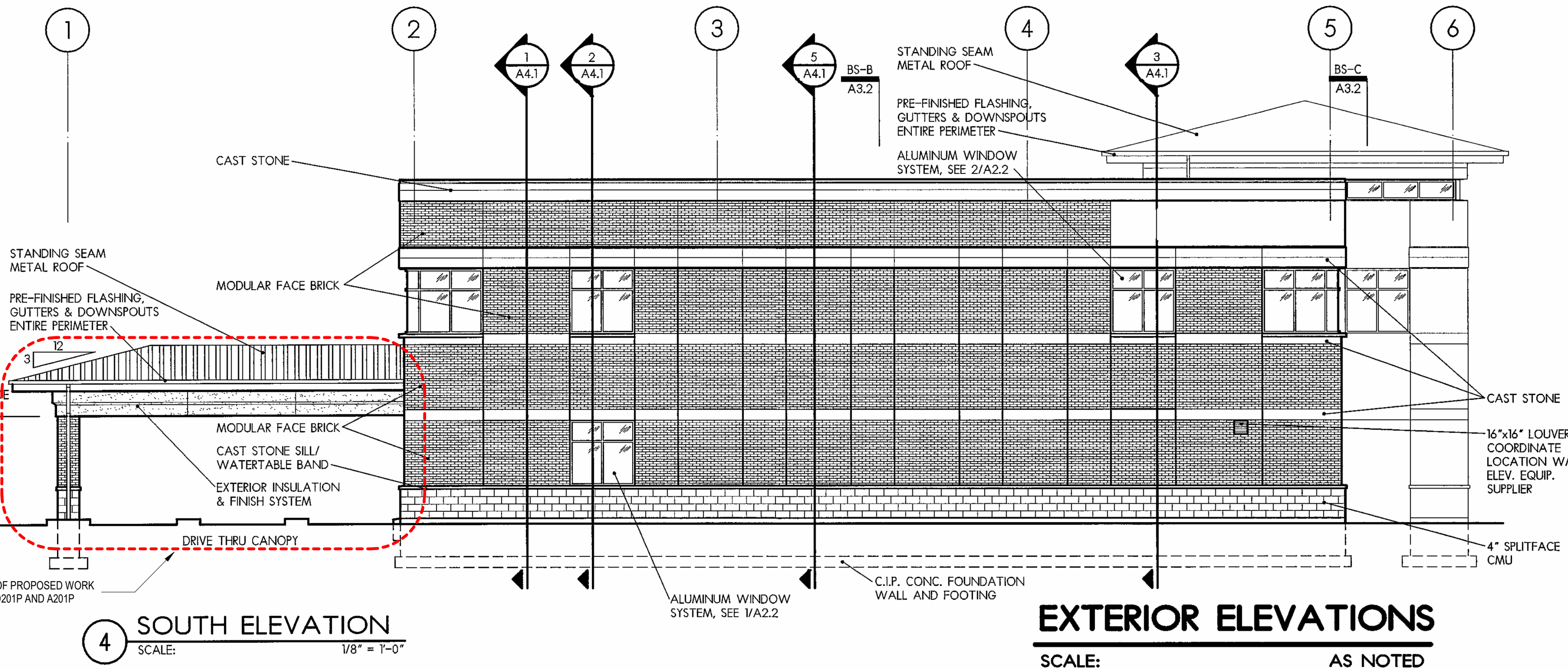
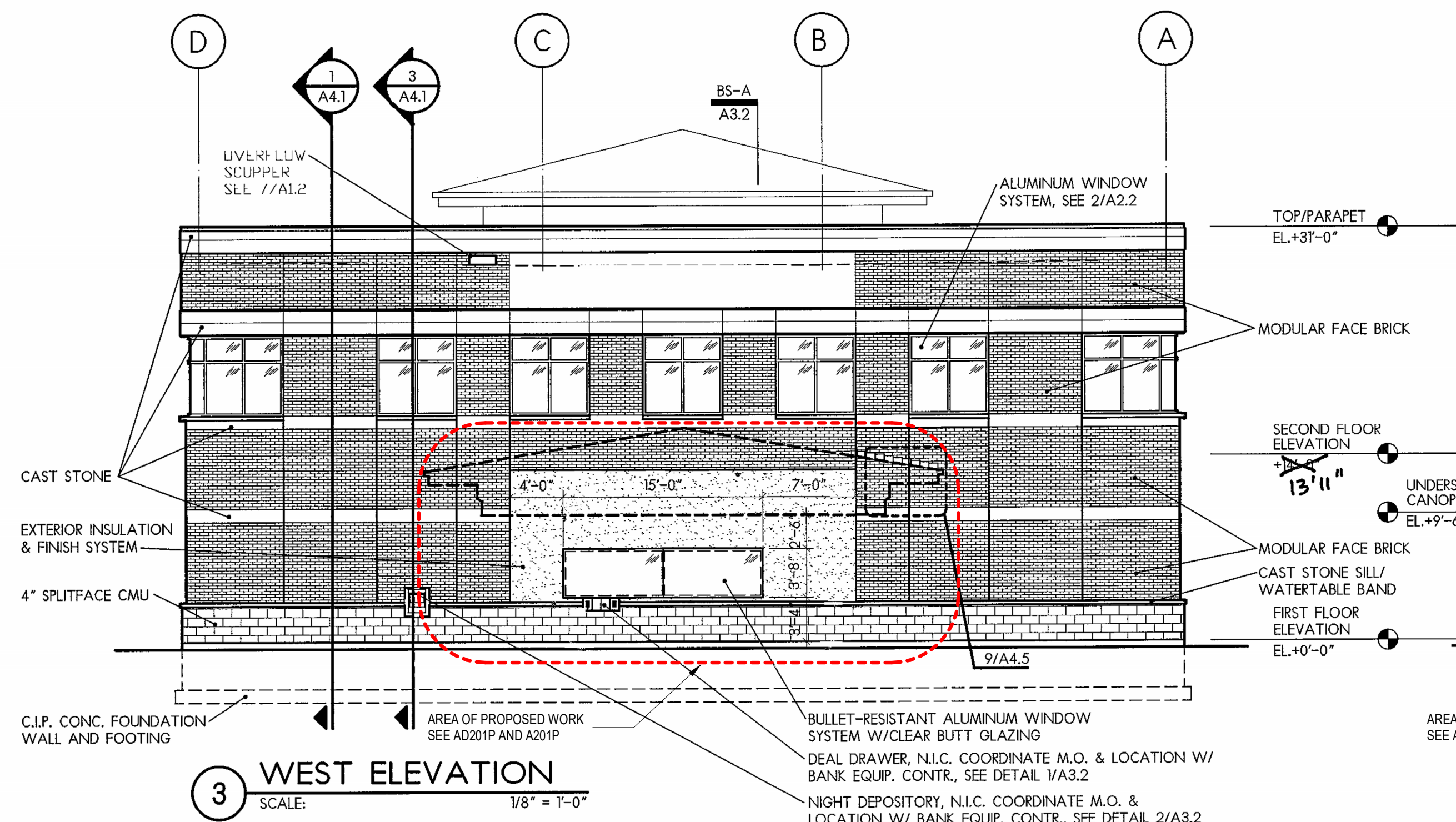
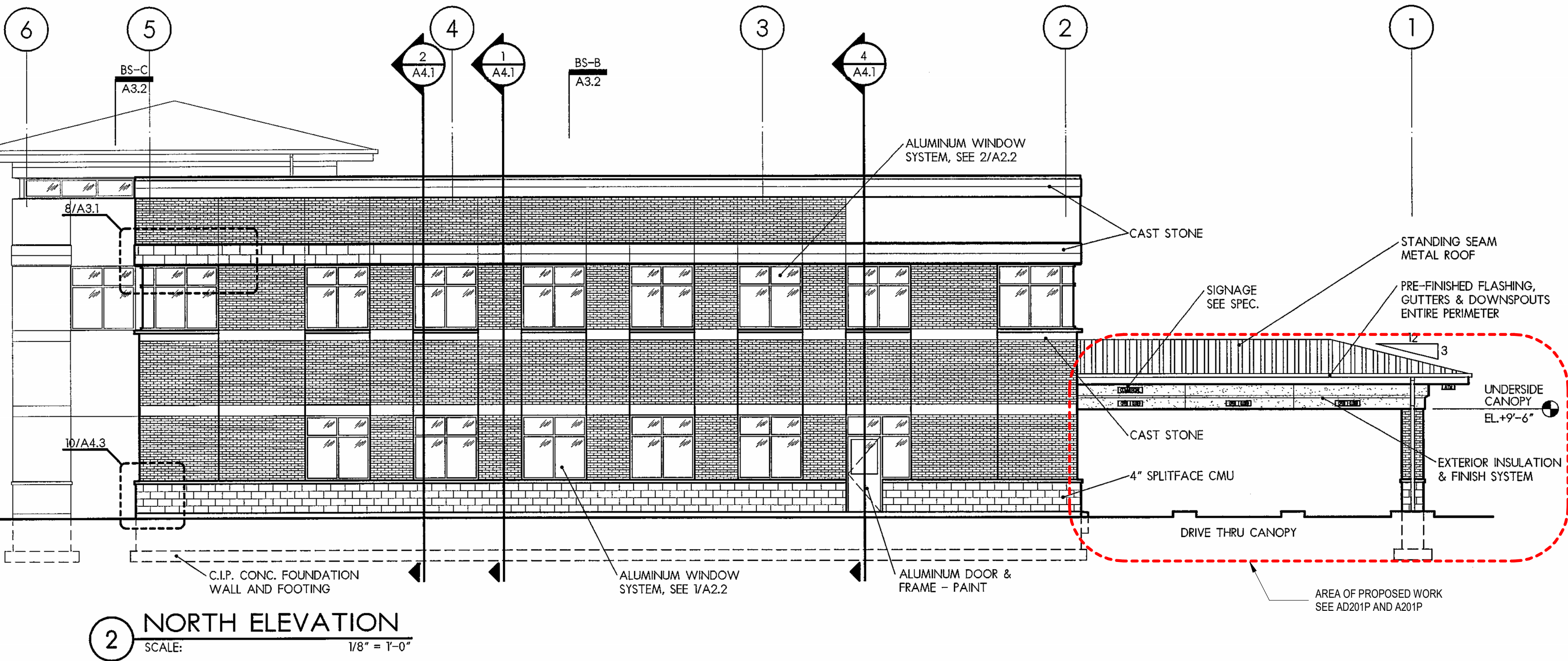
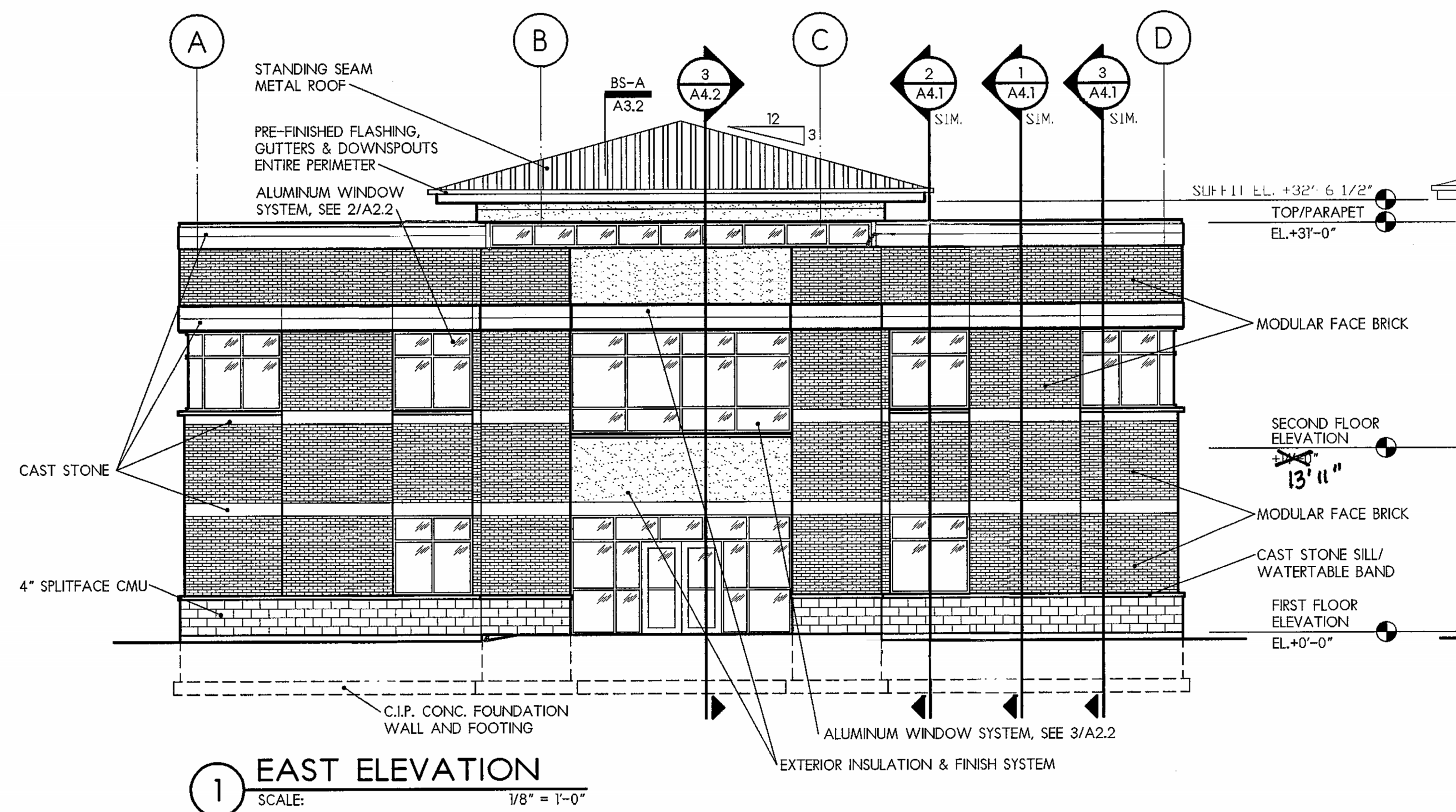
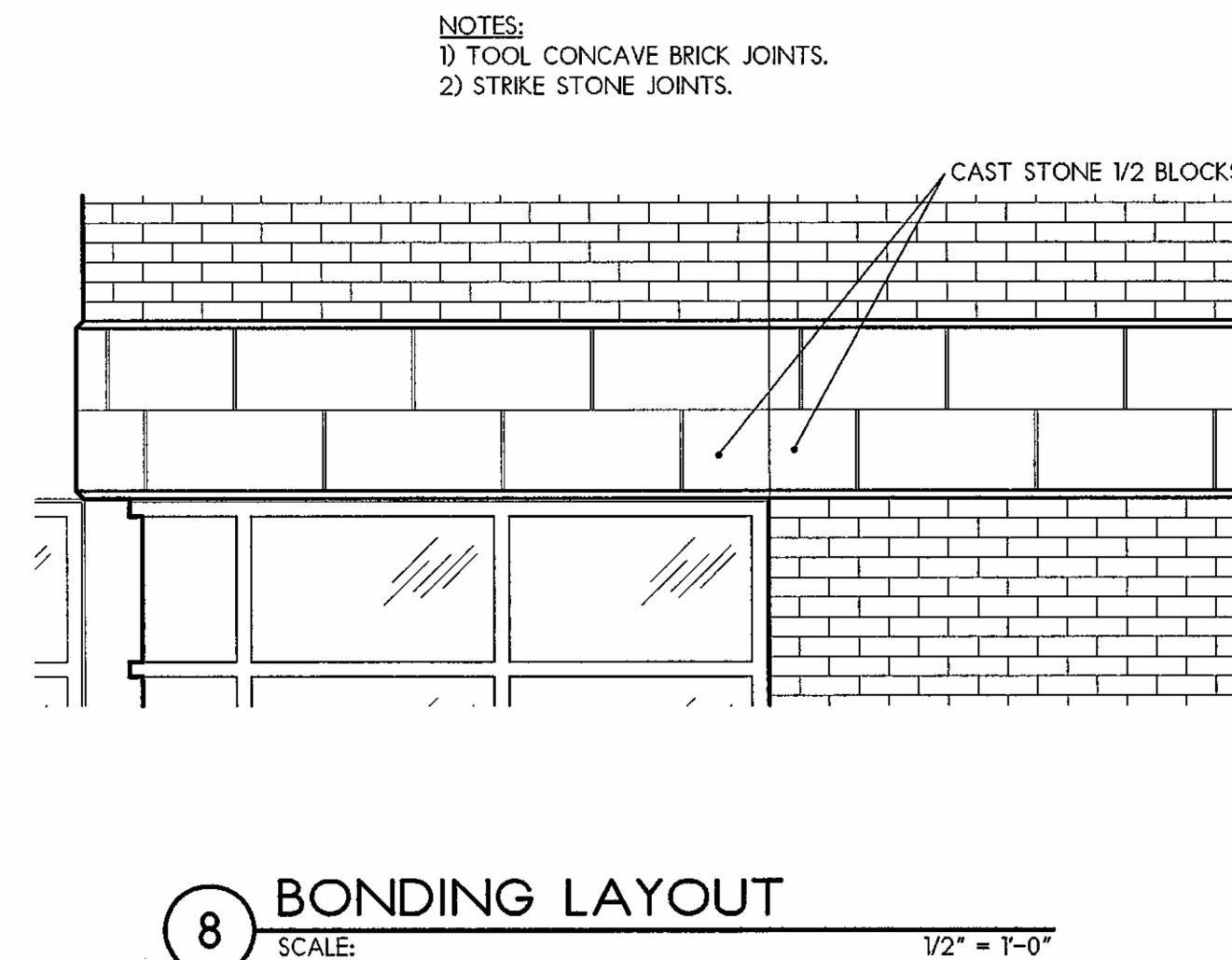
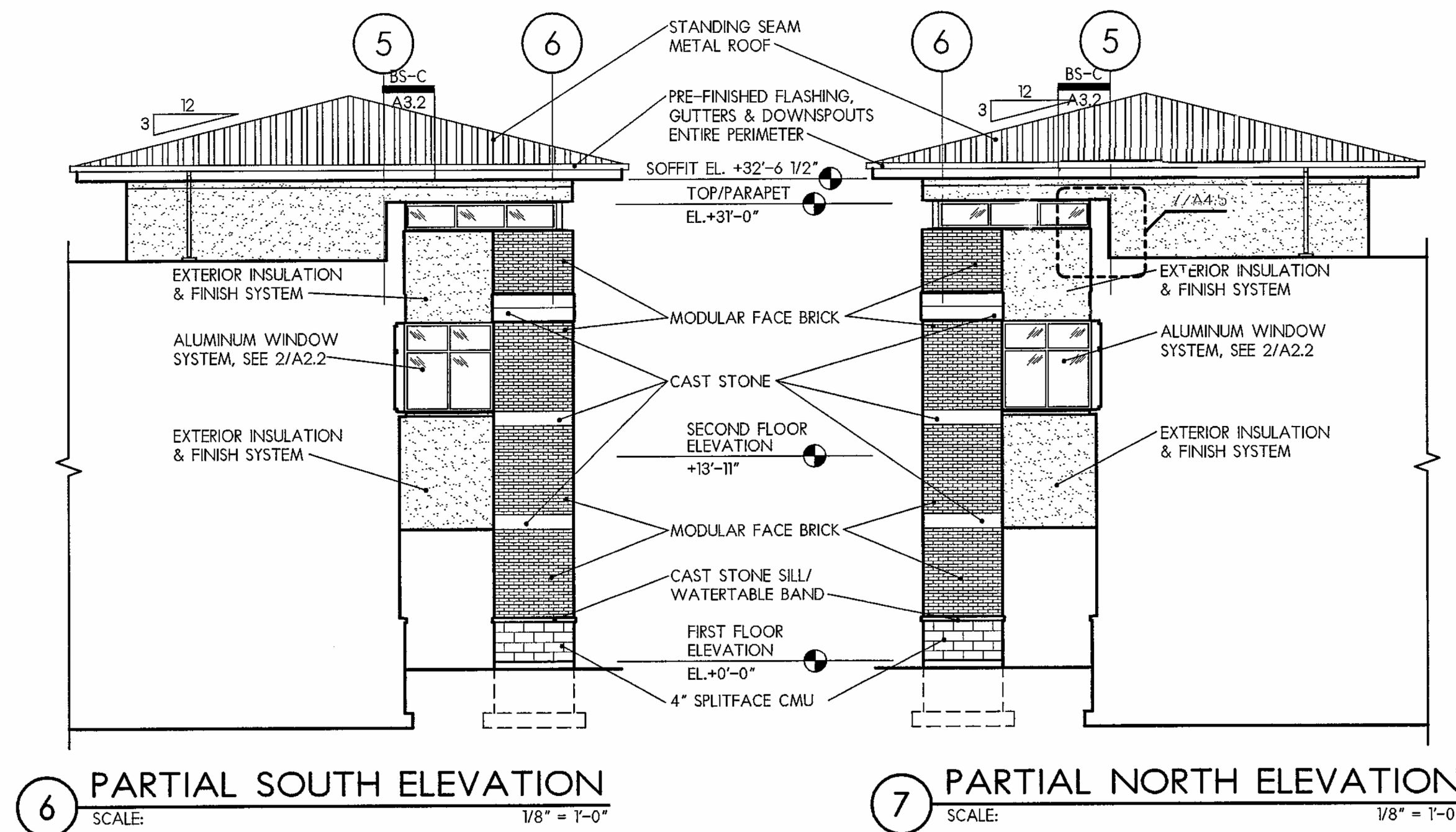
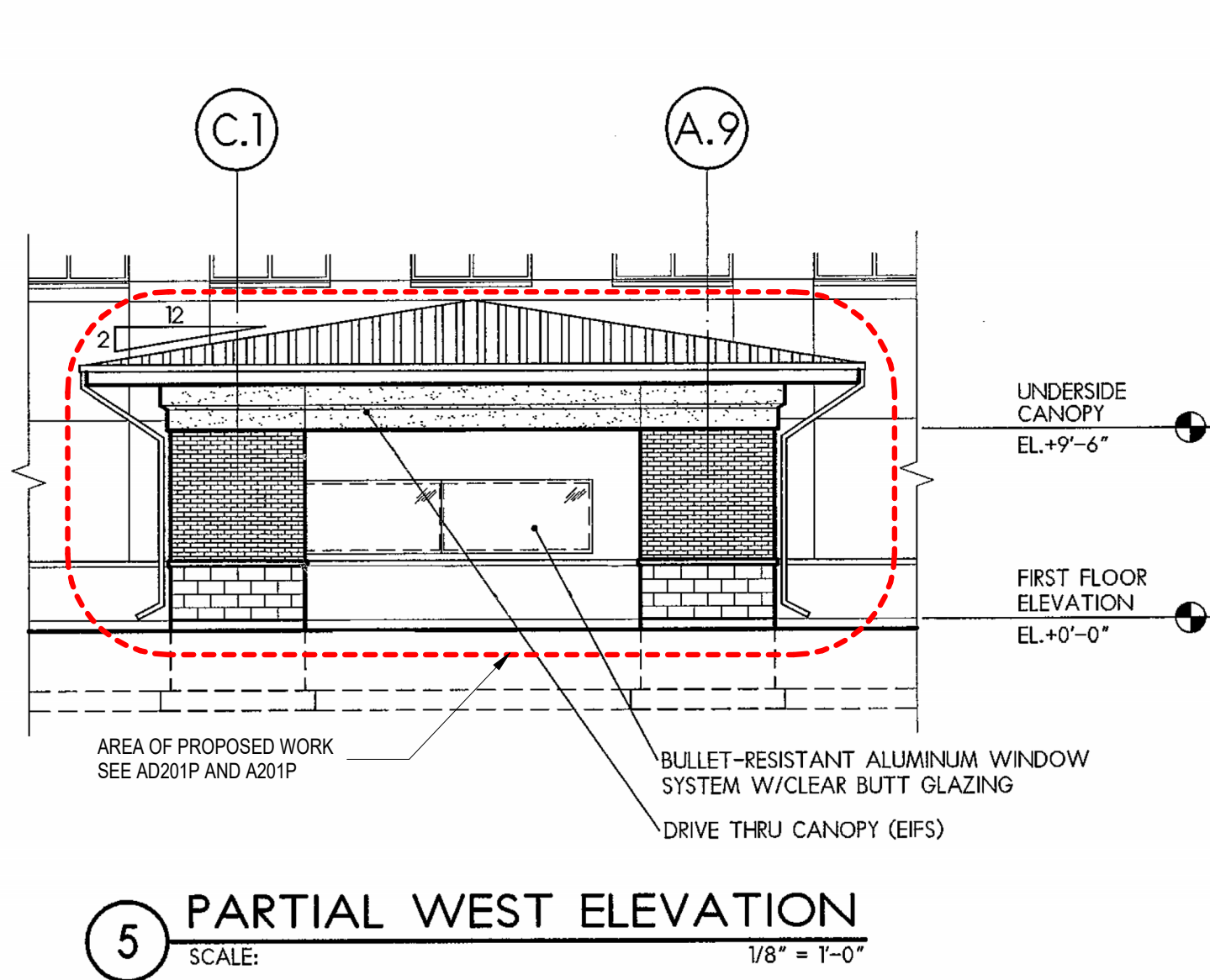


EIFS CEILING  
109' - 6"

FIRST FLOOR  
100' - 0"







**EXTERIOR ELEVATIONS**  
SCALE: AS NOTED

**UWCU MAYFAIR ITM RETROFIT**

2365 N MAYFAIR RD  
WAUWATOSA, WI 53226  
UW CREDIT UNION  
MAYFAIR BRANCH

ISSUE DATES:  
Issue Description Date  
DRB DRB 08-07-25

This document contains confidential or proprietary information of Iconica. Neither the document nor the information herein is to be reproduced, distributed, used or disclosed, either in whole or in part, except as specifically authorized by Iconica.

Sheet Title  
**BUILDING ELEVATIONS - EXISTING CONDITIONS**

Project Number: 20240980  
Sheet Number

**A301P**



ARCHITECTURAL KEYED NOTES	
MARK	DESCRIPTION
A14	FILL IN COUNTERTOP GAP WITH SOLID SURFACE TO MATCH THE EXISTING. LG HAUSYS-HI-MACS / NO G101 "CRYSTAL BEIGE" (VIF)
A15	PROVIDE ALL NECESSARY WORK AND MATERIALS TO REINSTALL THE REFURBISHED COUNTERTOP
A32	INSTALL RELOCATED CABINETS WITH NEW 4" HIGH BASE. BASE FINISH TO MATCH CABINET FINISH: WOOD VENEER / TREEFROG 60411 / FINE WALNUT GROOVE (VIF)
A33	ADJUST EXISTING WALL BASE AS NEEDED TO ACCOMMODATE NEW CABINETS

ARCHITECTURAL GENERAL NOTES:

GENERAL NOTES APPLY TO ALL SHEETS.

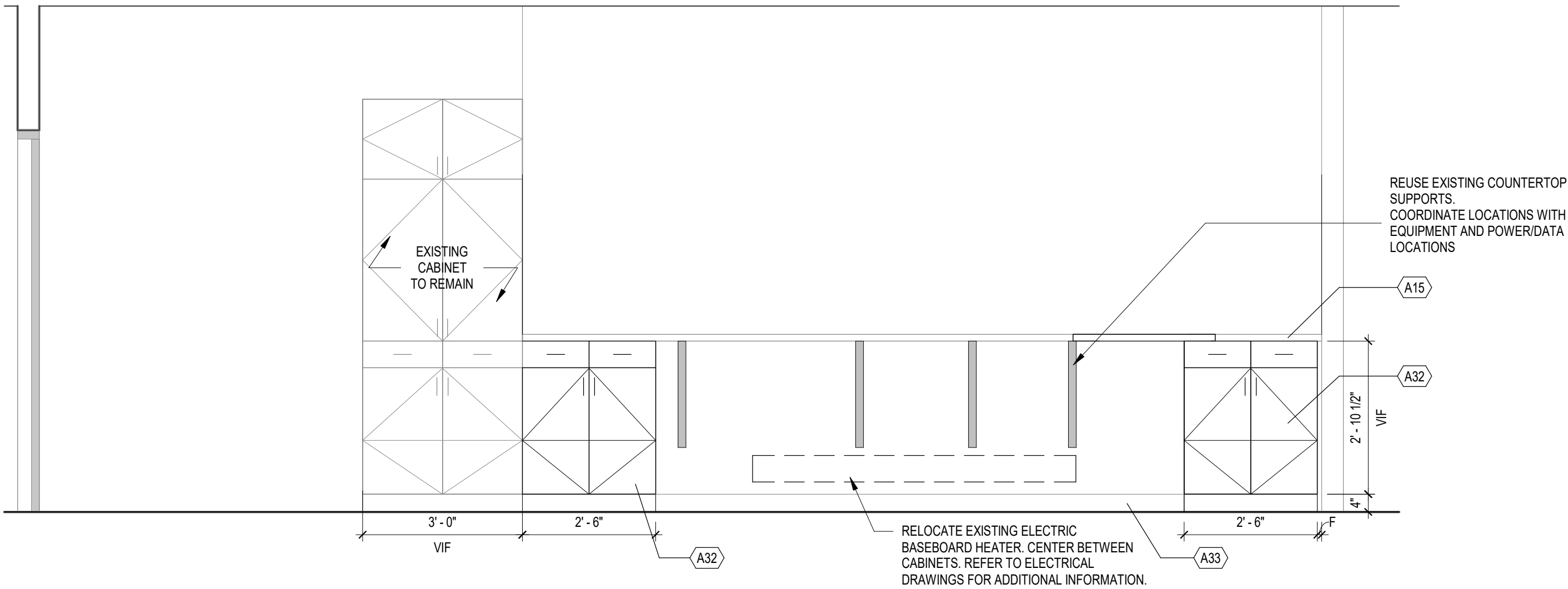
1. COORDINATE ALL ITEMS TO BE SALVAGED WITH BUILDING OWNER



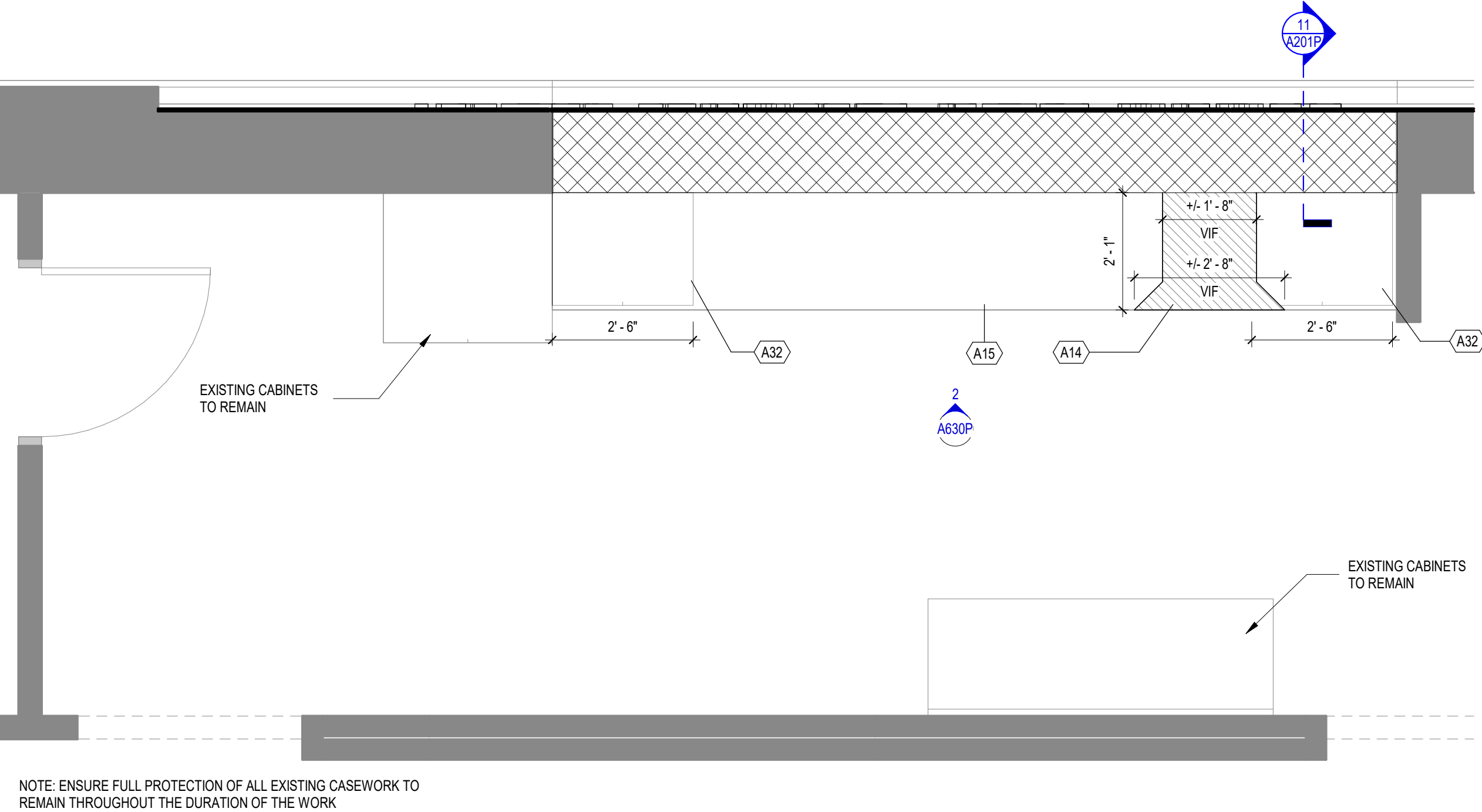
- EXISTING WALL TO REMAIN



- NEW CONSTRUCTION



2 INTERIOR ELEVATIONS - PROPOSED  
A630P SCALE: 1/2" = 1'-0"



1 ENLARGED PLAN - DRIVE-UP ROOM PROPOSED  
A630P SCALE: 1/2" = 1'-0"

UWCU MAYFAIR ITM RETROFIT

2365 N MAYFAIR RD  
WAUWATOSA, WI 53226

UW CREDIT UNION  
MAYFAIR BRANCH

ISSUE DATES:		
Issue	Description	Date
DRB	DRB	08-07-25

This document contains confidential or proprietary information of Iconica. Neither the document nor the information herein is to be reproduced, distributed, used or disclosed, either in whole or in part, except as specifically authorized by Iconica.

Sheet Title  
INTERIOR ELEVATIONS

Project Number: 20240980

Sheet Number

A630P







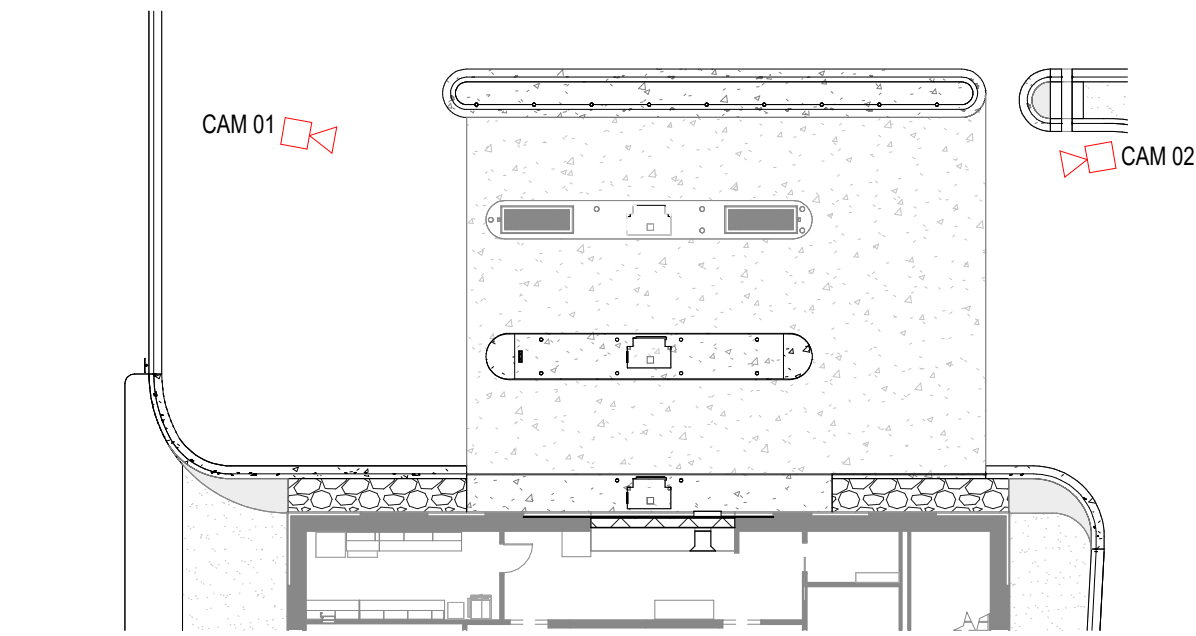


CAMERA 02



CAMERA 01

4  
A901P  
PROPOSED WORK - RENDERINGS  
1" = 20'-0"



3  
A901P  
PROPOSED WORK - KEY PLAN  
1" = 20'-0"



PHOTO 04



PHOTO 03

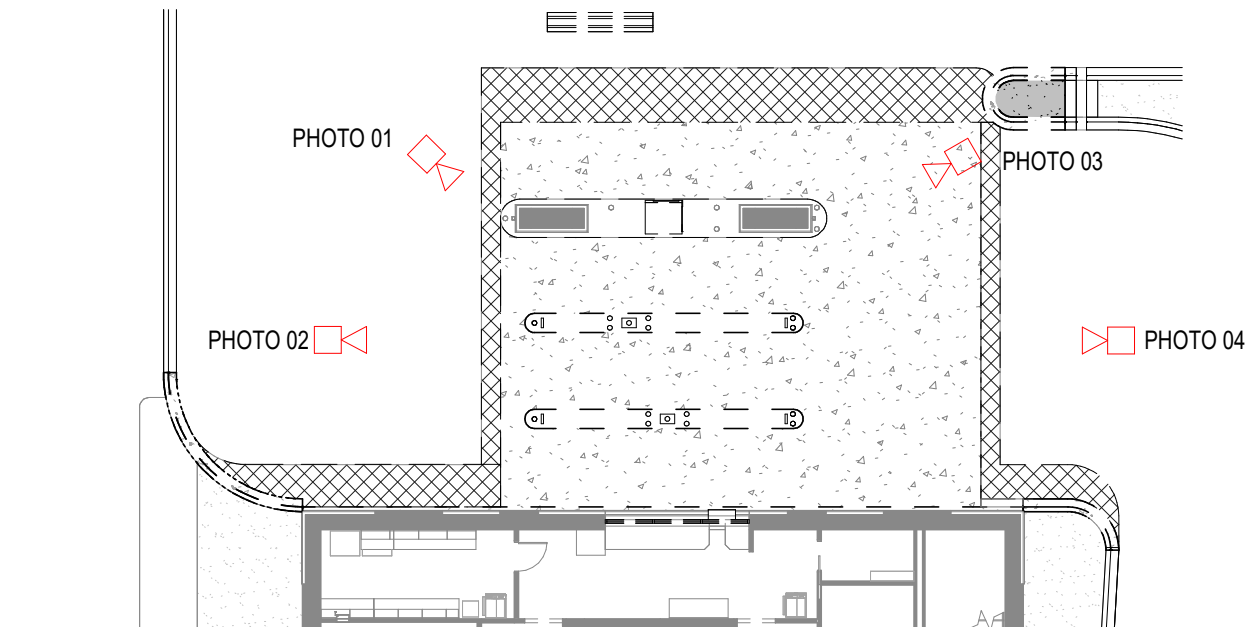


PHOTO 02



PHOTO 01

2  
A901P  
EXISTING CONDITIONS - PHOTOS  
1" = 20'-0"



1  
A901P  
EXISTING CONDITIONS - KEY PLAN  
1" = 20'-0"

UWCU MAYFAIR ATM RETROFIT

2365 N MAYFAIR RD  
WAUWATOSA, WI 53226

UW CREDIT UNION  
MAYFAIR BRANCH

ISSUE DATES:		
Issue	Description	Date
DRB	DRB	08-07-25

This document contains confidential or proprietary information of Iconica. Neither the document nor the information herein is to be reproduced, distributed, used or disclosed, either in whole or in part, except as specifically authorized by Iconica.

Sheet Title  
PHOTOS & RENDERINGS

Project Number: 20240980

Sheet Number

A901P



CLIENT DRAWINGS

Please note that lines marked "for Approval" will not be scheduled for production until client approval is received.  
Approved client drawing must be signed and sent to project manager via email or fax to (514) 931-4862

Project: UW CREDIT UNTION MAYFAIR	SO: 100611	PO: 5890TJJ979444C
	Drawn by: HarkiratS	Date: 7/18/2025
REP: Enterprise Lighting, Ltd.	PM: John Sahan	johns@lumenwerx.com



T: (514) 225-4304 | [www.lumenwerx.com](http://www.lumenwerx.com)

Line	Type	Qty	Order Code	Rev	Date	Shipment	Status	By
1	FS24	3	V4SEALS-D-WETL-EPDO-SW-80CRI-1000LMF-35K-24FT-UNV-D1-1C-NA-TF-GSM-AL-CRF	0	07/17/2025		For Approval	HarkiratS

90 CRI INSTEAD OF 80 CRI  
WHITE FINISH INSTEAD OF ALUMINUM

SEE END OF THE DOCUMENT PACKAGE FOR INSTALLATION SHEETS



CLIENT DRAWING

Line 1 : FS24

VIA 4 SEAL  
SURFACE DIRECT

Project: UW CREDIT UNTION MAYFAIR	SO: 100611	Drawn By: HarkiratS	REV: 0
	PO: 5890TJJ979444C	Date: 7/18/2025	REV Date:
Rep: Enterprise Lighting, Ltd.	PM:	Email:	
	Approved By:		Page:2 of 2

Lumenwerx

T: (514) 225-4304 | [www.lumenwerx.com](http://www.lumenwerx.com)

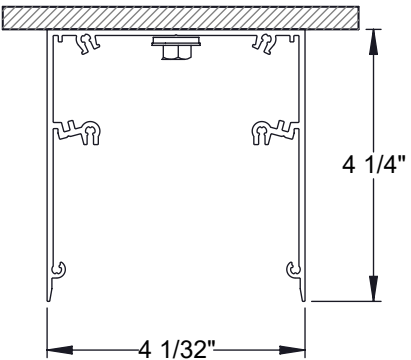
Wiring

(WB001) D1/D5 - 1 CIRCUIT

CIRCUIT 1	BLK	HOT (CIRCUIT 1)
	WHT	NEUTRAL (CIRCUIT 1)
	GRN	GROUND (CIRCUIT 1)
	PPL	DIM (+) 0-10V
	PNK	DIM (-) 0-10V

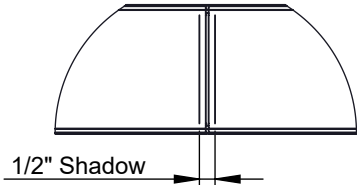
SWB001

Section View



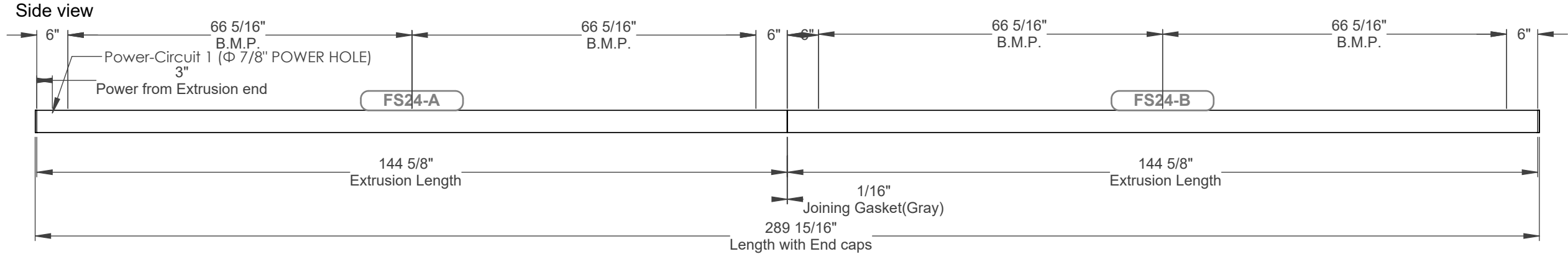
Detail View

AT JOINING SECTION

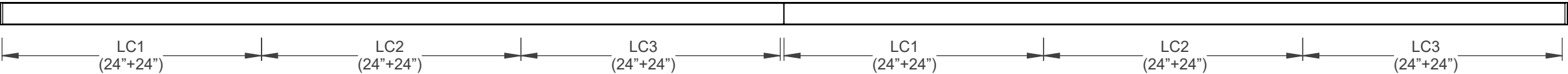


ELECTRICAL CIRCUIT

SECTION  
Circuit 1: A B



Bottom view



Ordering Code

	V4SEALS	D	WETL	EPDO	SW	80CRI	1000LMF	35K	24FT luminaire length	UNV	D1	1C	NA	TF	GSM	AL	CRF
qty	luminaire id	distribution	environment	direct optic	light source	cri	dir lum pack	color temp		voltage	driver	electrical	electrical sections	power feed	mounting	finish	options
	VIA 4 SEAL SURFACE	Direct	Wet Listed (IP54)	Environment ally Protected	Static white	80+ CRI	1000 lumens	3500K	288.0 inch	120V-277V	1% 0-10V	1 circuit	Not Applicable	Top feed	Gasketed surface mount	Aluminum	Corrosion resistant finish



# Via 2 - 3 - 4 Seal Surface

LUMENWERX

**!** This product must be installed in accordance with the National Electrical Code and all applicable local codes, by a person familiar with the construction and operation of the product, and the hazards involved. Proper grounding is required for safety.

Ce produit doit être installé suivant le code national de l'électricité, ainsi que tous les codes locaux applicables, par une personne familière avec la construction et le fonctionnement du produit, ainsi que tous les risques qui y sont associés. La mise à terre électrique est obligatoire pour la sécurité.

**!** Wire dimming conductors as Class 1.  
**!** For wet location installations, properly seal all mounting and electrical points.  
**💡** Shown with Via 4 Seal and applies to Via 2 Seal & Via 3 Seal.

## SINGLE FIXTURE

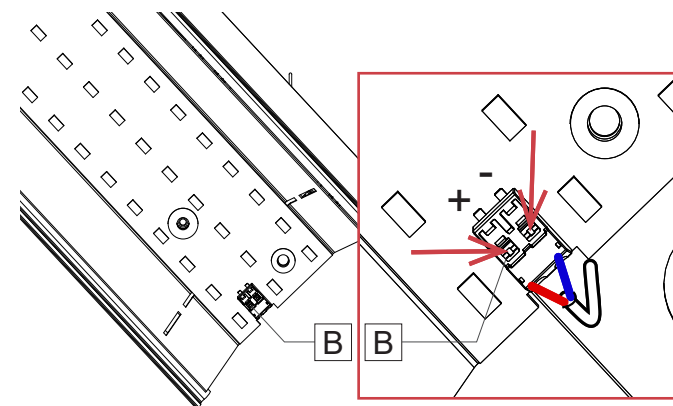
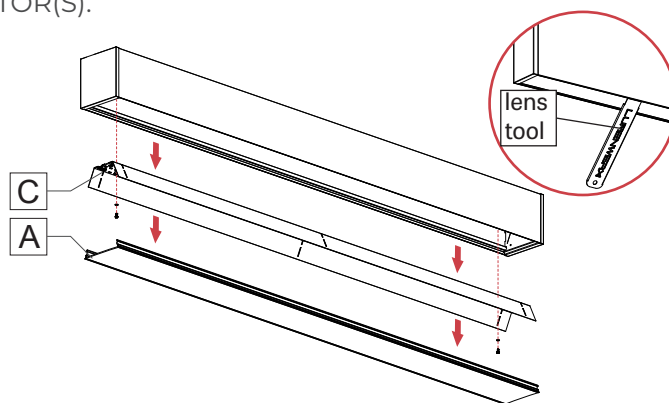
### 1 REMOVE LENS(ES) AND REFLECTOR(S).

**Caution:** Make sure the electrical power is turned off.

Remove lens(es) [A] with the provided lens tool.

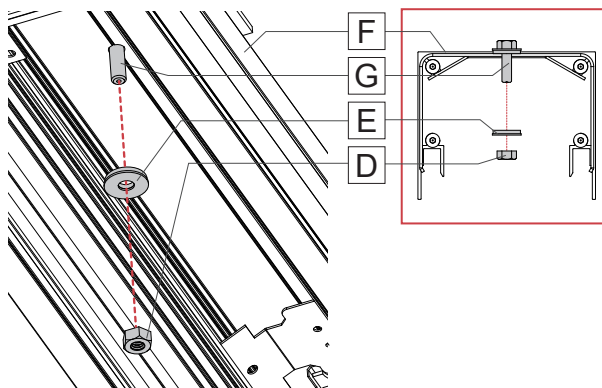
Disconnect LED mox connector [B] by taking a pointed object and pressing on the two tabs on top.

Remove the reflector(s) [C].



### 2 REMOVE TEMPORARY SCREWS.

Remove nuts [D] and washers [E] (that are steel + rubber bonded together) inside the fixture [F]. Put them in a safe place. Finally remove the screws [C] that won't be needed anymore.



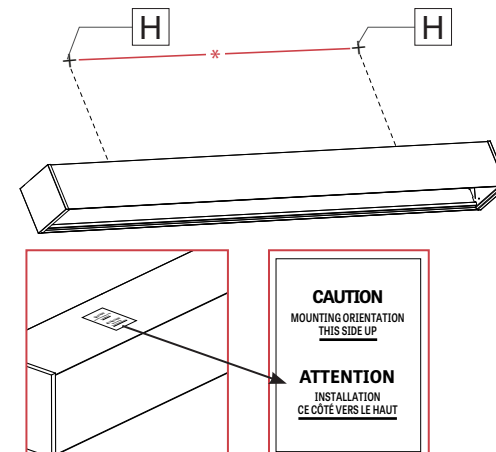
### 3 MARK MOUNTING POINTS.

Locate mounting points [H] in the ceiling. Refer to the dimensions [\*] supplied in the client drawings.

**Note 1:** For TOP FEED fixture, the main power cable should come out from the ceiling.

**Note 2:** For END FEED fixture, locate the J-box in an appropriate location.

**Note 3:** Make sure the label is oriented upwards and the direct lens is facing down.





# Via 2 - 3 - 4 Seal Surface

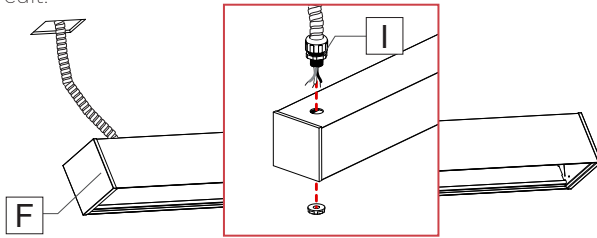
LUMENWERX

## 4 INSTALL THE FIXTURE TO THE CEILING.

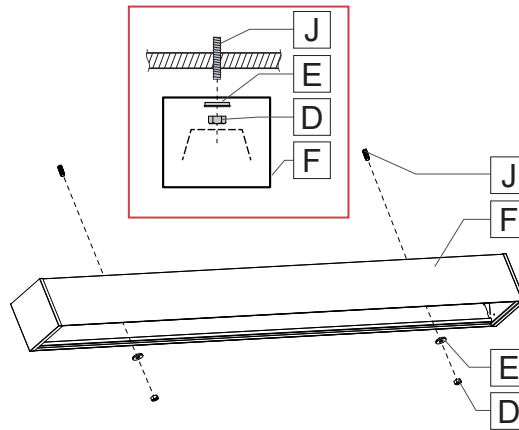
### TOP FEED

If it is a TOP FEED fixture, before installing the fixture [F] connect the 1/2" trade size liquid-tight conduit fitting [I] (by others) to the 7/8" hole provided. Make sure the fitting is well tightened. A non-metallic liquid-tight flexible conduit system needs to be used (by others).

**Warning:** A luminaire with more than one power supply connection means shall be connected to only one branch circuit.



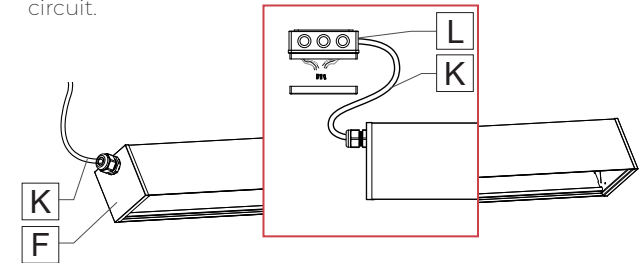
Fasten the fixture [F] to the threaded stud [J] using washers (that are steel + rubber bonded together) [E] and nuts [D]. Make sure the 1/4"-20 nuts are well tightened.



### END FEED

If it is a END FEED fixture, after installing the fixture [F] make electrical connections between the main power and the 2FT long white power-cord [K] of the fixture inside wet location junction box [L]. Screw back junction box cover.

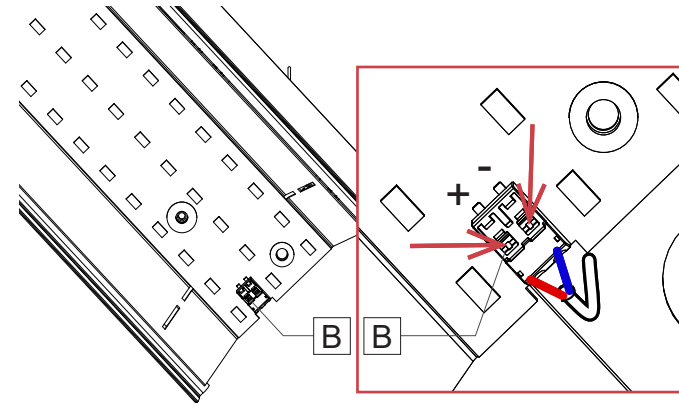
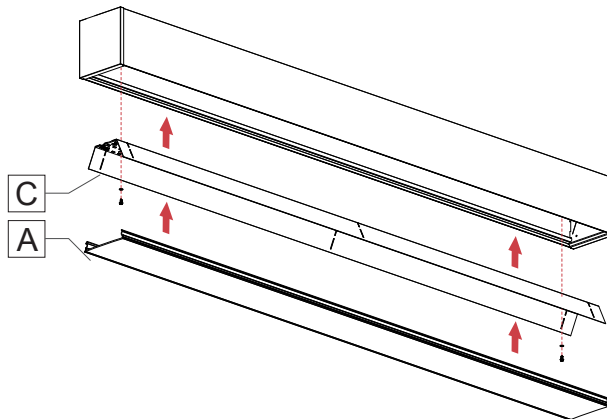
**Warning:** A luminaire with more than one power supply connection means shall be connected to only one branch circuit.



## 5 REINSTALL REFLECTOR(S) AND LENS(ES).

Reinstall the (reflectors) [C] and reconnect the LED molex connector [B]. Snap the lens(es) [A] back in place.

**Note:** Connect blue wire into the [-] negative terminal and the Red wire into the [+] positive terminal.





# Via 2 - 3 - 4 Seal

## Surface

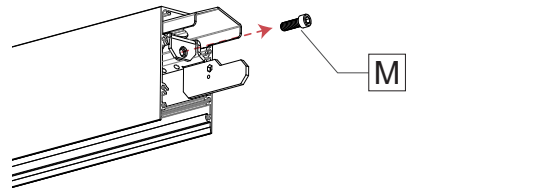
LUMENWERX

### CONTINUOUS RUN

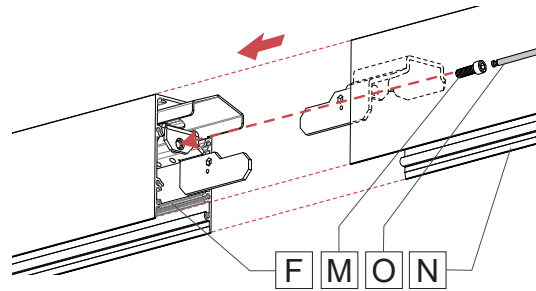
- 1 FOR CONTINUOUS RUN, REPEAT STEPS 1 - 4 FROM THE SINGLE FIXTURE SECTION FOR THE FIRST FIXTURE IN THE RUN. ....
- 2 REPEAT STEPS 1 - 3 FROM THE SINGLE FIXTURE SECTION FOR THE SECOND FIXTURE IN THE RUN. ....
- 3 JOIN FIXTURES. .... WET - Wet Suitable .....

#### Via 2 Seal

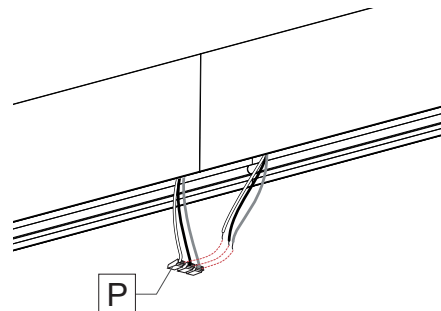
1- Remove the screw [M] from the joiner.



2- Align the second fixture [N] to the first fixture [F]. Attach the second fixture [N] to the ceiling shown in step 4 (no power feed on second fixture). Join the fixtures together. Put the joiner screw [M] back and tighten using a 3/16" ball-end screwdriver [O] to pull the extrusions together.

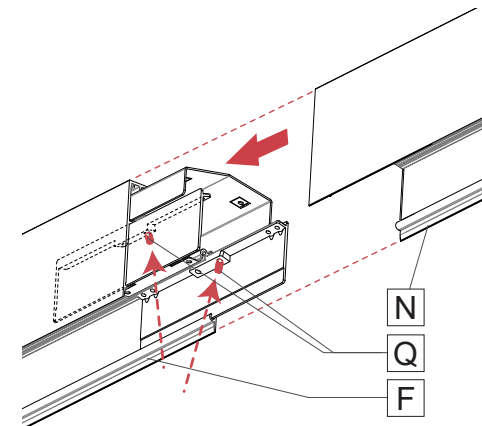


3- Connect wires between joining fixtures using quick connectors [P]. Number of wires may vary.

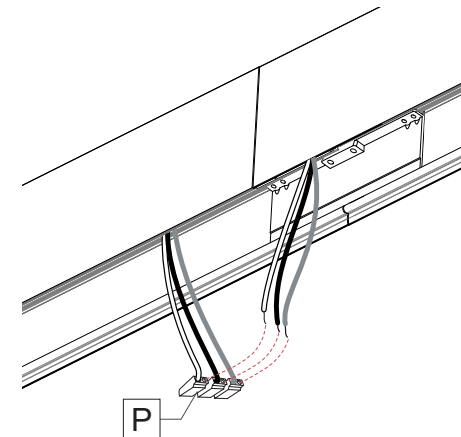


#### Via 3 Seal & Via 4 Seal

1- Align the second fixture [N] to the first fixture [F]. Attach the second fixture [N] to the ceiling shown in step 4 (no power feed on second fixture). Join the fixtures together and secure them by tightening the set screws [Q].



2- Connect wires between joining fixtures using quick connectors [P]. Number of wires may vary.





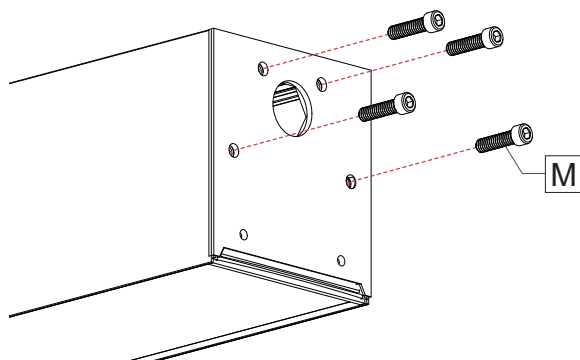
# Via 2 - 3 - 4 Seal Surface

LUMENWERX

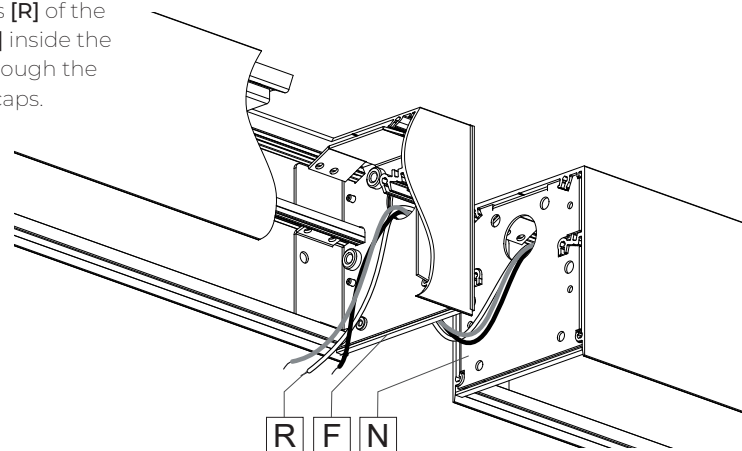
## 3 JOIN FIXTURES. .... WETL - Wet Listed .....

**1-** Unscrew and remove the screws [M] from the end cap of the joiner. Keep them in a safe place.

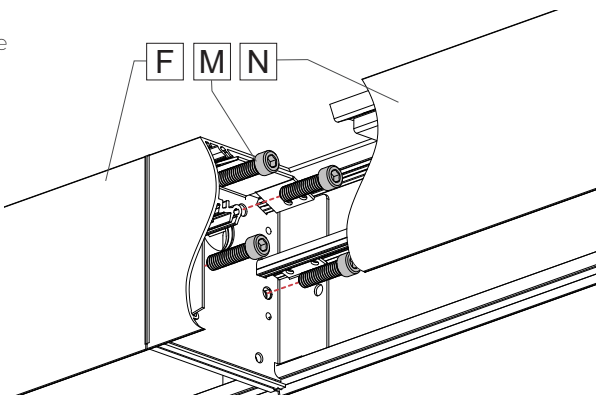
**Note:** 2 screws for Via 3 Seal and 4 screws for Via 4 Seal.



**2-** Push the wires [R] of the second fixture [N] inside the first fixture [F] through the holes of the end caps.

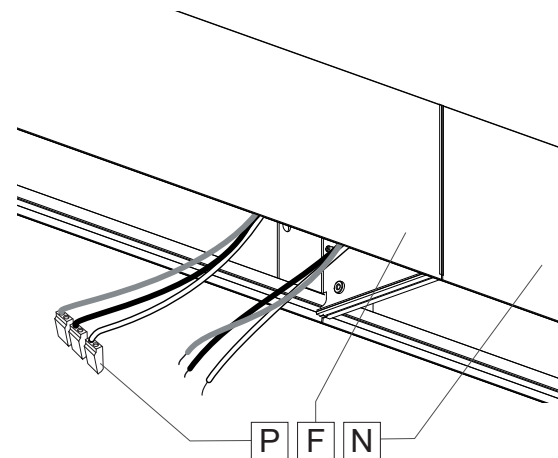


**3-** Align the second fixture [N] to the first fixture [F]. Attach the second fixture [N] to the ceiling shown in step 4. Reinstall the screws [M] from the inside of the second fixture [N] (no power feed on second fixture). Tighten the joining screws and make sure the joining gasket is well compressed between the two extrusions.



**Note:** 2 screws for Via 3 Seal and 4 screws for Via 4 Seal.

**4-** Make the wire connections between fixtures [F] and [N] using quick connectors [P].



## 4 REINSTALL REFLECTORS AND LENSES AS SHOWN IN STEP 5 OF THE SINGLE FIXTURE SECTION. ....

## 5 REPEAT CONTINUOUS RUN STEPS FOR THE REST OF THE FIXTURES IN THE RUN. ....



2006375-13

**PURA<sup>®</sup> NFC | SIDINGS**

WOOD DECORS

**PU30**

Tropical Ipe  
Matt | Brown core



Pura<sup>®</sup> NFC samples and Pura<sup>®</sup> NFC sidings are produced within specific tolerances. Samples are not representative for thickness and edge finishing of produced sidings.

All Pura<sup>®</sup> NFC products are certified according to the PEFC<sup>™</sup> standard.

**PURA-NFC.COM**



PU30-431879

TRESPA<sup>®</sup>