



Wauwatosa, WI

Design Review Board

Meeting Agenda - Final

7725 W. North Avenue
Wauwatosa, WI 53213

Thursday, March 6, 2025

6:00 PM

Committee Room #1

ROLL CALL

NEW BUSINESS

1. 2635 N Mayfair Road - KPot - RTU Screening - Return to Board [25-0329](#)
2. 1851 Church Street - Exterior Remodel - Return to Board [25-0178](#)
3. 6933 North Avenue - Wing Stop - RTU Screening [25-0330](#)

ADJOURNMENT

NOTICE TO PERSONS WITH A DISABILITY

Persons with a disability who need assistance to participate in this meeting should call the City Clerk's office at (414) 479-8917 or send an email to tclerk@wauwatosa.net, with as much advance notice as possible.



Wauwatosa, WI

7725 W. North Avenue
Wauwatosa, WI 53213

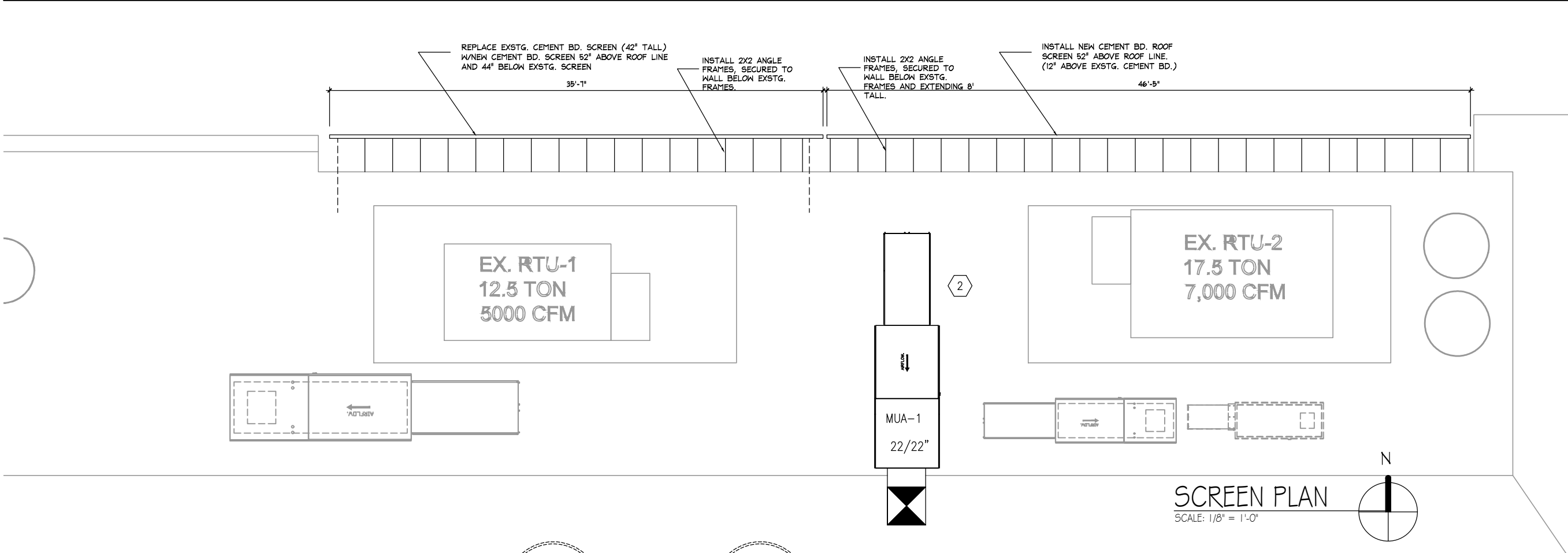
Staff Report

File #: 25-0329

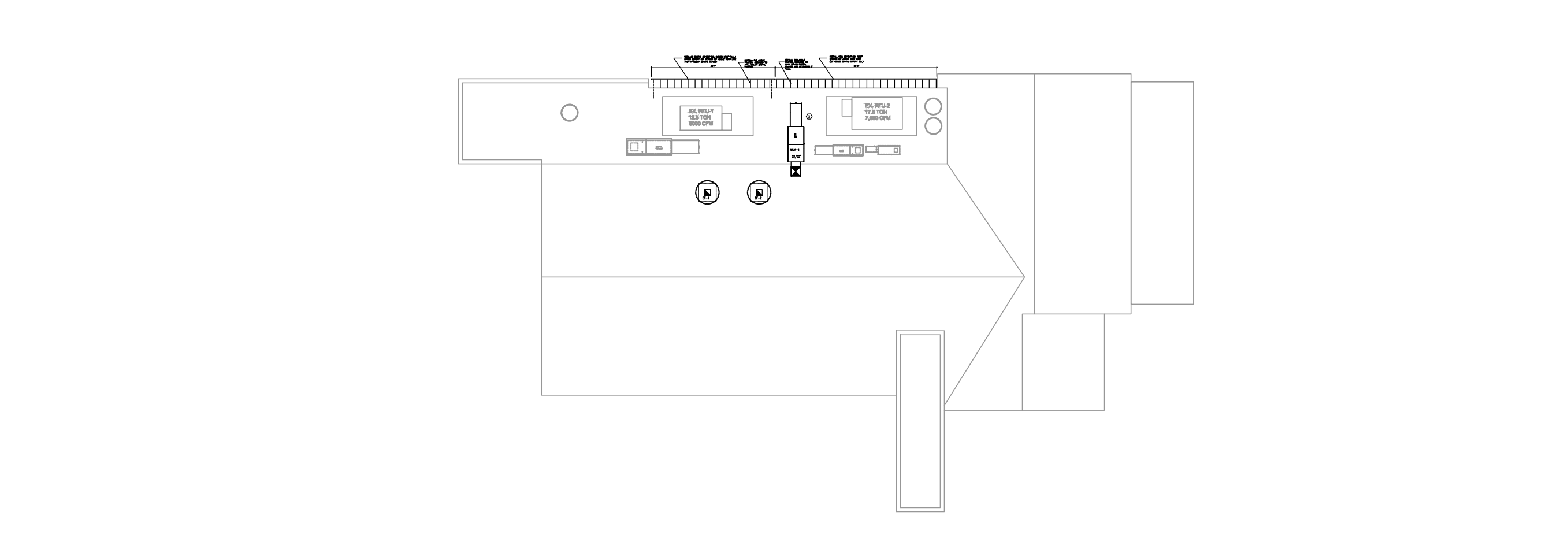
Agenda Date: 3/6/2025

Agenda #: 1.

2635 N Mayfair Road - KPOT - RTU Screening - Return to Board



SCREEN PLAN
SCALE: 1/8" = 1'-0"



JENDUSA
DESIGN BUILD INC.
Architects, Engineers &
Project Managers
P 262-369-0700
W jendusaeng.com

©2025 Jendusa Design Build, Inc
All rights reserved. This document
is an instrument of service and is the
property of Jendusa Design Build, Inc
and may not be used without prior
written consent.

REVISIONS

REMODEL

Kpot Restaurant

Mayfair Rd
Wauwatosa, WI

SHEET TITLE

SCREEN PLAN

PROJECT NO.

DATE

2-20-25

SCALE

AS NOTED

CHECKED BY

DRAWN BY

JFJ

SHEET

A1.0

ted
M
ance
ne Research
te
ces LLC
on Milwaukee
CELES
WISCONSIN
DIAGNOSTIC
LABORATORIES

Associated Bank
Customer
Parking
Unauthorized
vehicles will be
towed at
owner's expense
WIS. STATUTE 348.08 (4)

Customer
Parking

2045
BUILDING
REAR
PARKING
ONLY

NON-BANK PARKING
REAR OF BUILDING





2645
BUILDING
TENANT
PARKING
ONLY

NON-BANK PARKING
REAR OF BUILDING

Associated
Customer
Parking
Unauthorized
vehicles will be
towed at
owner's expense
NOV. 2016 140-00-00

Associated
Customer
Parking
Unauthorized
vehicles will be
towed at
owner's expense

Customer



Wauwatosa, WI

7725 W. North Avenue
Wauwatosa, WI 53213

Staff Report

File #: 25-0178

Agenda Date: 3/6/2025

Agenda #: 2.

1851 Church Street - Exterior Remodel - Return to Board



EXISTING NORTH VIEW



EXISTING SOUTH VIEW



EXISTING WEST VIEW



NORTH VIEW



SOUTH VIEW



WEST VIEW

BRIDGEPORT™ STEEL

garage doors

1 & 2-LAYER CONSTRUCTION



America's Favorite Garage Doors®



Bridgeport™ Steel / Model BD4NV, Narrow Panel;
Shown in White with SQ24 Window Design

BRIDGEPORT™ STEEL

garage doors

Bridgeport™ Steel garage doors combine the traditional symmetry of wood stile and rail door designs without the upkeep and maintenance. Create a look that complements the overall look of your home by selecting the window design, color and decorative hardware to give it that one-of-a-kind look. Available with or without insulation. The first fabulous impression becomes a lasting impression.



STYLE AND CONSTRUCTION

- Narrow and extended recessed panels creates a transitional shaker style.
- 24 gauge or 25 gauge 2" steel frame construction for long-lasting performance.
- Hot-dipped galvanized exterior steel with a baked-on primer and top coat help ensure a virtually maintenance-free door with long-lasting beauty.
- Optional 1-5/16" polystyrene insulation improves energy efficiency. 6.3 R-value (Models BD5NV, BD4NV, BD5EV and BD4EV).
- Long-life nylon rollers are quiet and durable.
- Replaceable vinyl bottom weatherseal in a corrosion-resistant retainer helps seal out the elements.
- See your Clopay Dealer for WindCode® door availability.

2
LAYER
CONSTRUCTION

R-VALUE
6.3

1
LAYER
CONSTRUCTION

Model	Description
BD5NV	25 Gauge, Narrow Recessed Panel, Insulated
BD4NV	24 Gauge, Narrow Recessed Panel, Insulated
BD5EV	25 Gauge, Extended Recessed Panel, Insulated
BD4EV	24 Gauge, Extended Recessed Panel, Insulated

Model	Description
BD5N	25 Gauge, Narrow Recessed Panel, Non-Insulated
BD4N	24 Gauge, Narrow Recessed Panel, Non-Insulated
BD5E	25 Gauge, Extended Recessed Panel, Non-Insulated
BD4E	24 Gauge, Extended Recessed Panel, Non-Insulated

Calculated door section R-value is in accordance with DASMA TDS-163.



DOOR DESIGNS



Narrow

Models BD5N, BD5NV, BD4N and BD4NV



Extended

Models BD5E, BD5EV, BD4E and BD4EV

CUSTOM PAINT OPTION



Choose from over 1,500 Sherwin-Williams® paint colors to complement your home with Clopay's Color Blast® factory-finishing option. Our durable two-part paint system is tested and backed by a five-year warranty.

COLORS



Standard
White

Almond

Desert Tan

Sandtone

Chocolate*

Black†

- Exterior steel on solid colors has a natural woodgrain texture.
- Doors can be painted to match the home's exterior using a high-quality latex exterior paint. Do not use oil-based paint.

**Not available on Models BD4E and BD4EV*

†Additional charges apply. Not available on Models BD5N, BD5NV, BD5E and BD5EV. Due to the printing process, colors may vary.

ULTRA-GRAIN® FINISH



Ultra-Grain® Oak
Walnut Finish



Ultra-Grain® Oak
Slate Finish

- Painted steel surface simulates a real stained door without the need of staining and the ongoing maintenance of wood.
- Oak woodgrain runs horizontal on stiles and vertical on panels for an authentic, natural look.
- Exterior steel surface on an Ultra-Grain® finish door has a woodgrain texture.

Additional charges apply.

Not available on Models BD5N, BD5NV, BD5E and BD5EV.

NARROW PANEL WINDOW AND TOP SECTION OPTIONS

Doors range from 6'0" to 16'0" high and 7'8" to 20'2" wide. Door widths 10'2" - 11'4" and 14'8" are not available. Consult your Clopay Dealer for size options.

MODELS BD5N, BD5NV, BD4N and BD4NV

HEIGHTS 7'0" - 8'0"
WIDTHS 7'8" - 10'0"



11'6" - 14'6"

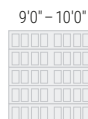
Illustrations simplified for clarity.



14'10" - 19'0"



19'2" - 20'2"



9'0" - 10'0"

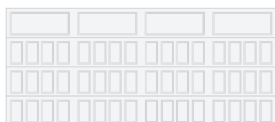
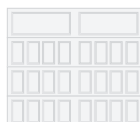
7'8" - 10'0"



10'6" - 12'0"

7'8" - 10'0"

Extended Solid Top



Plain Short



Plain Long



REC12



REC14



SQ22



SQ24



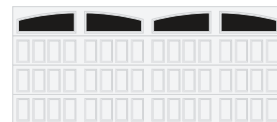
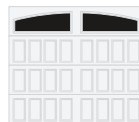
Wrought Iron Short*



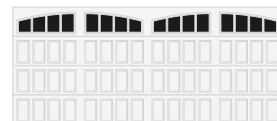
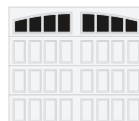
Wrought Iron Long*



ARCH1



Vertical Grille
on ARCH1



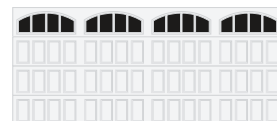
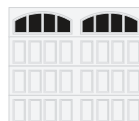
Grille on ARCH1



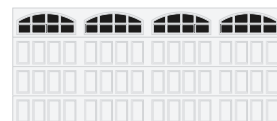
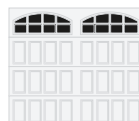
ARCH2



Vertical Grille
on ARCH2



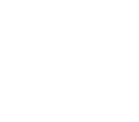
Grille on ARCH2



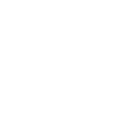
ARCH3



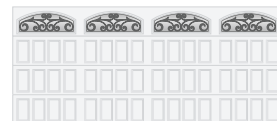
Vertical Grille
on ARCH3



Grille on ARCH3



Wrought Iron Arch*



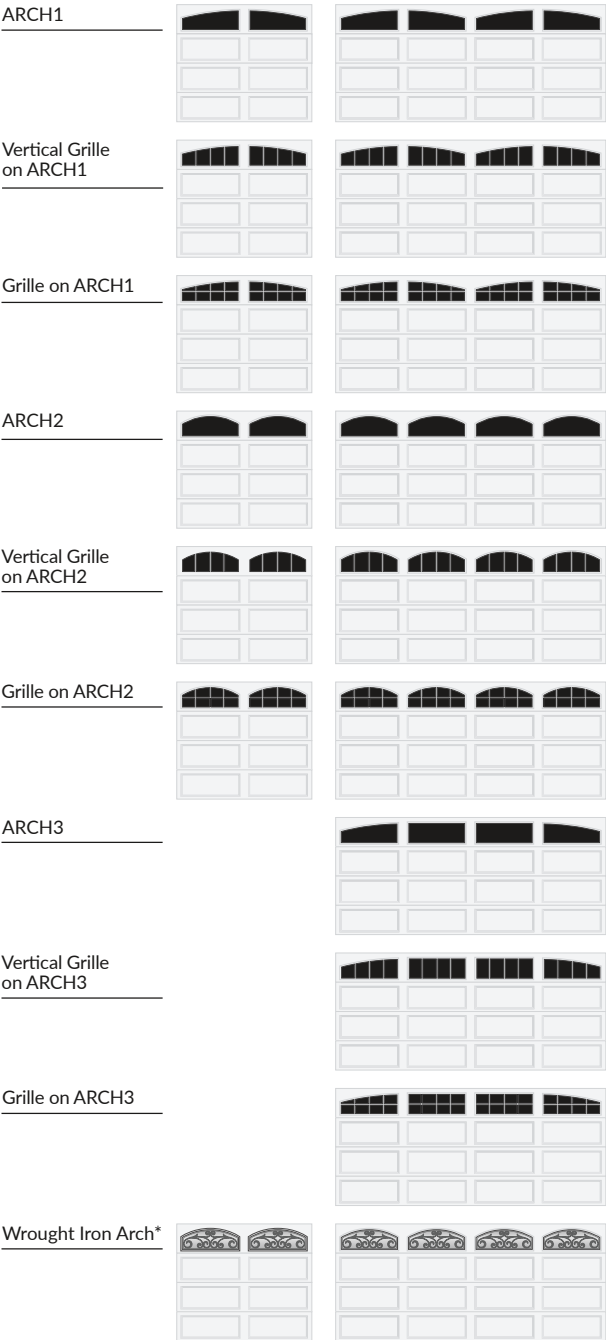
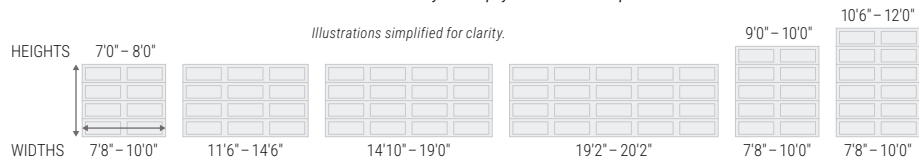
*Acrylic

Note: Due to stile width restrictions, some odd size door widths may allow only for the installation of a single handle. See your Clopay Dealer for details.

EXTENDED PANEL WINDOW AND TOP SECTION OPTIONS

Doors range from 6'0" to 16'0" high and 7'8" to 20'2" wide. Door widths 10'2" – 11'4" and 14'8" are not available. Consult your Clopay Dealer for size options.

MODELS BD5E, BD5EV, BD4E and BD4EV



*Acrylic
Note: Due to stile width restrictions, some odd size door widths may allow only for the installation of a single handle. See your Clopay Dealer for details.

WINDOW OPTIONS

GLASS



Plain Short



Plain Long



ARCH1



ARCH2



REC12



REC14



Vertical Grille on ARCH1



Vertical Grille on ARCH2



SQ22



SQ24



Grille on ARCH1



Grille on ARCH2

ACRYLIC



Wrought Iron Short



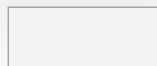
Wrought Iron Long



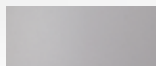
Wrought Iron Arch

Long and short windows may be used on any Bridgeport™ Steel model. Grilles are removable for easy cleaning. Double-strength glass is standard. Additional charges for optional glass apply. Acrylic windows require special cleaning. See care and maintenance manual.

Windows are available single pane in clear, frosted, seeded, obscure and rain designs. Clear acrylic also available.



Clear



Frosted



Seeded



Obscure



Rain

DECORATIVE HARDWARE

STANDARD



Doors come standard with color-matched lift handles.

OPTIONAL



Spade Lift Handles



Spade Step Plate



Spear Lift Handles†



Spear Step Plate†



Spear Strap Hinge*†



Colonial Lift Handles†



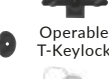
Colonial Step Plate†



Colonial Strap Hinge*†



Operable L-Keylocks



Operable T-Keylock



Escutcheon Plates

Spade Strap Hinge*
(Complements
Spade Lift Handles
and Spade Step Plate)

*Aluminum construction.
*Door may not open properly if installed near the
top depending on opening dimensions and lift type.
See your Clopay Dealer for more details.

ENVIRONMENTAL ASSURANCE

Clopay doors are compliant with environmental laws and regulations and do not contain HFCs.

- California SB 1013
- New Jersey A-5583/S-3919 – Greenhouse Gas Bill
- Washington HB 1112 – Hydrofluorocarbon Greenhouse Gas Emissions
- Canadian regulations amending the ozone-depleting substances and halocarbon alternatives regulations

WARRANTIES

25 GAUGE DOORS (BD5N, BD5E, BD5NV and BD5EV)

PAINT SYSTEM	WINDOW	HARDWARE
LIMITED 15YR WARRANTY	LIMITED 10YR WARRANTY	LIMITED 3YR WARRANTY

24 GAUGE DOORS (BD4N, BD4E, BD4NV and BD4EV)

PAINT SYSTEM	WINDOW	HARDWARE
LIMITED LIFE WARRANTY	LIMITED 10YR WARRANTY	LIMITED 3YR WARRANTY

ADDITIONAL FEATURES



Large authentic arch window designs.



A true recessed stamp replicates the timeless look of a rail and stile built wood door.



Visit clopaydoor.com or call 1-800-2CLOPAY (225-6729) for more information on Clopay, America's Favorite Garage Doors.

Follow us on



©2025 Clopay Corporation. All rights reserved.

RSDR-BRIDGEPORT1-2LAYERSS-22_REV0225



START DESIGNING
YOUR NEW
GARAGE DOOR
OPEN CAMERA
AND POINT!



1-800-Simpson



Email Us

[Contact Us](#) | [Careers](#) | [EZQ](#)



36864 CRAFTSMAN (SDL)

DOOR SPECIFICATIONS (AS SHOWN):

Wood Species: Fir

Glass: Clear

Profile: Ovolo Sticking

Panel Type: 3/4" FP

Rough opening needs to be 2" wider and 2 1/2" taller than your door.

[Use my location to provide accurate pricing](#)

STANDARD OPTIONS

Quantity

1

[Change Quantity](#)

Change Door Shape

Planning to Stain or Paint?

[view more](#)

☒ Stain ☐ Paint

Wood Species

Fir

Original Slab Width

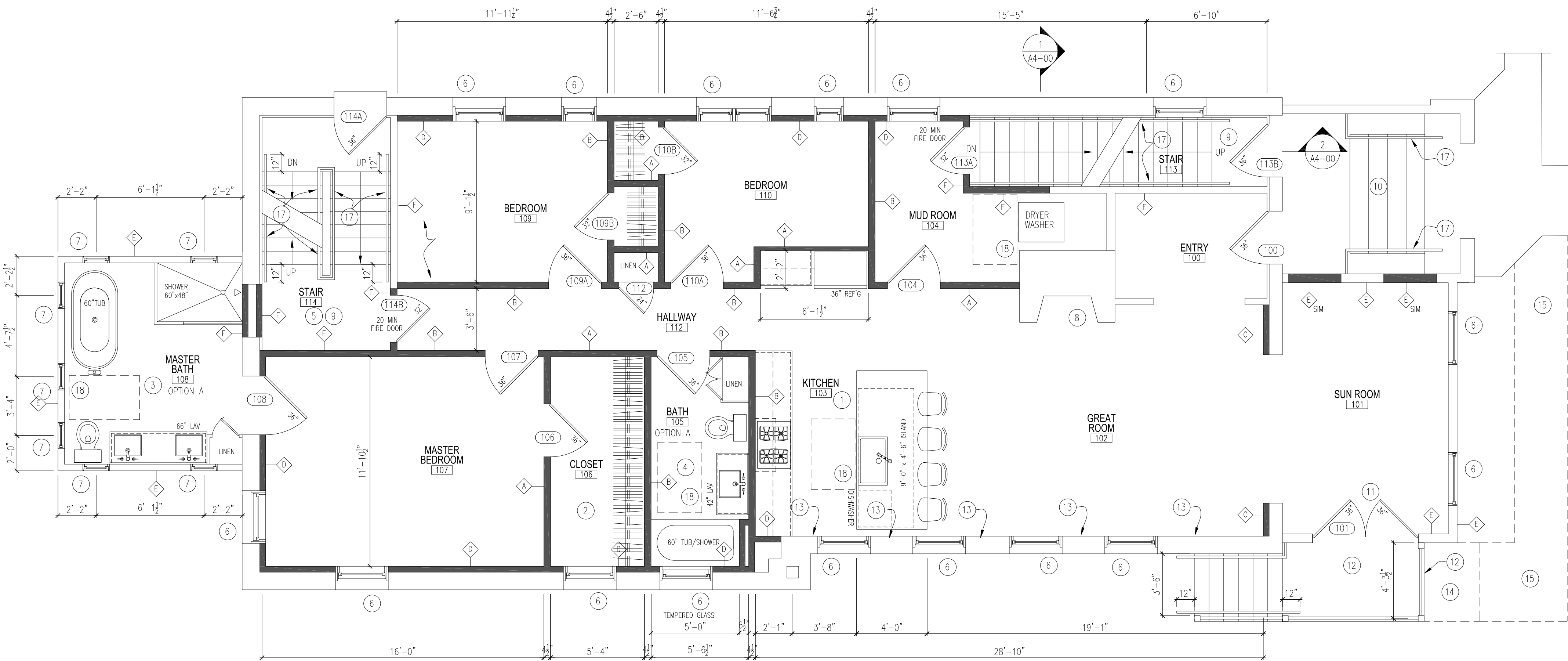
[view more](#)

Feet	Inches	Fraction
3	0	0

Original Slab Height

[view more](#)

6	8	0
---	---	---



FIRST FLOOR PLAN

SCALE : 1 / 4" = 1' - 0"



GENERAL CONSTRUCTION NOTES

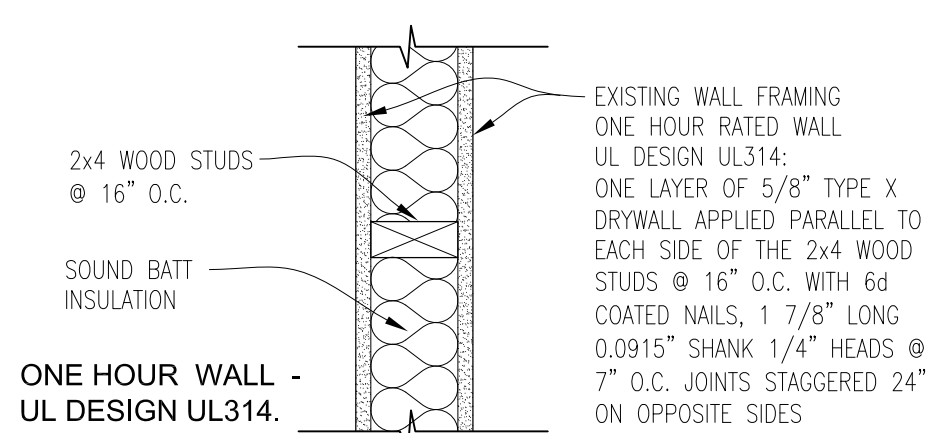
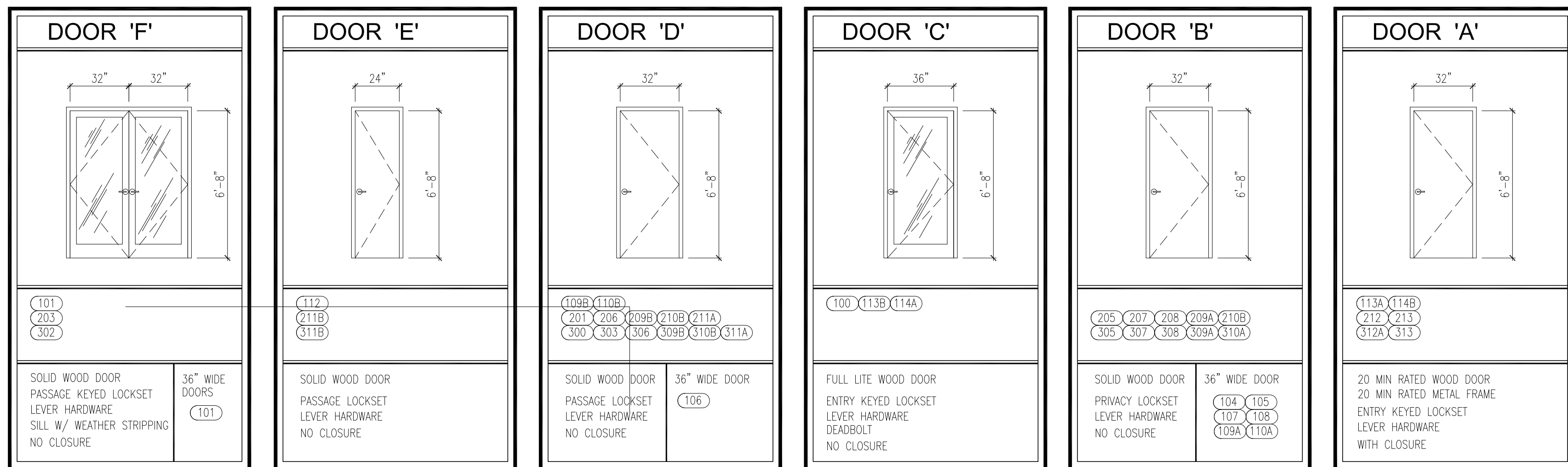
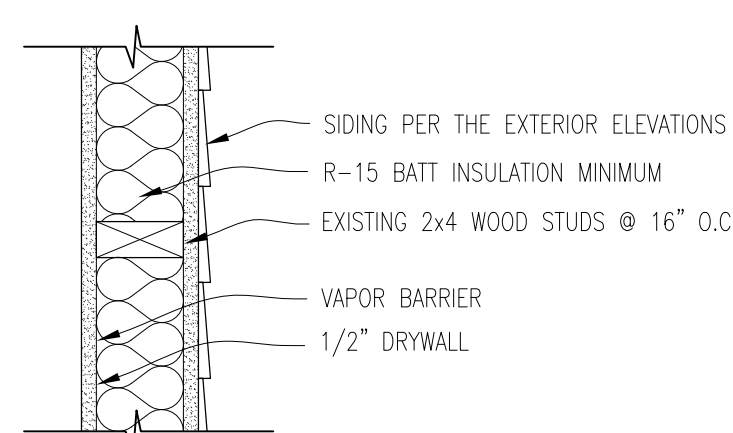
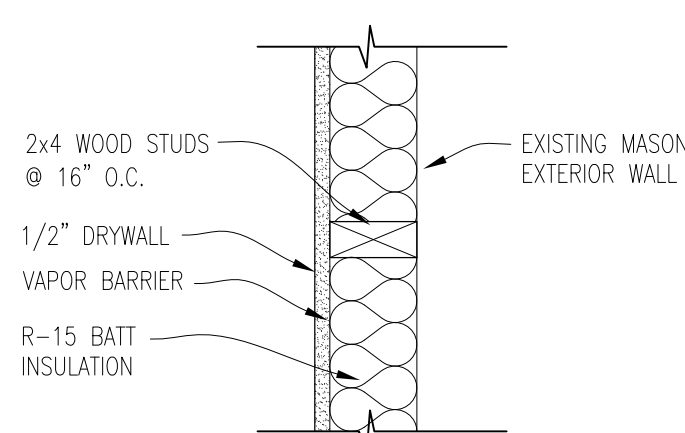
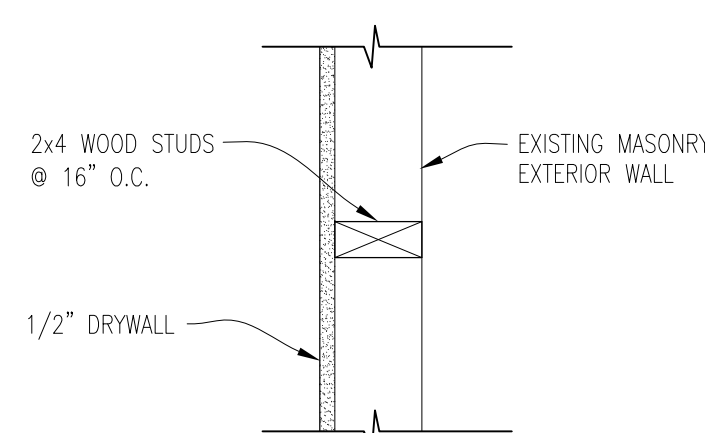
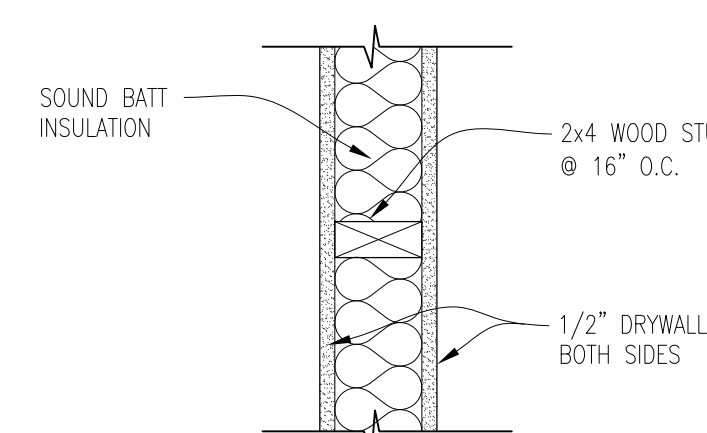
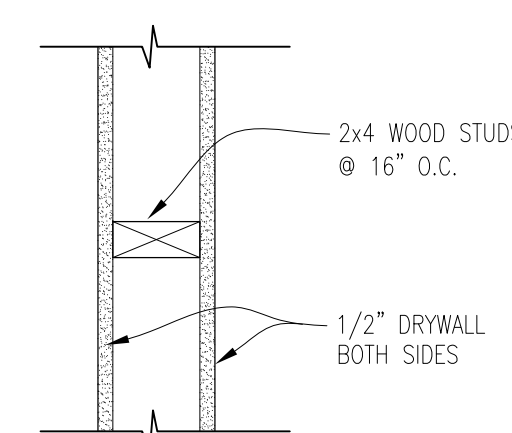
- (A) ALL EXISTING WALLS TO HAVE NEW 1/2" DRYWALL INSTALLED EXCEPT IN THE STAIR ENCLOSURES. THEY SHALL HAVE 5/8" SHEETROCK BRAND FIRECODE C CORE 1 HOUR SA305 B-8 GYPSUM PANELS
- (B) THE CEILING IN THE FIRST AND SECOND FLOOR TO HAVE:
5/8" SHEETROCK BRAND FIRECODE C CORE 1 HOUR SA305 B-8 GYPSUM PANELS
EXISTING 2x10 WOOD JOIST 16" O.C.
RC-1 CHANNEL OR EQUIVALENT 16" O.C.
FILL JOIST SPACE WITH ROCKWOOL INSULATION
EXISTING 19/32" T&G WOOD SUBFLOOR
1" LEVELROCK BRAND FLOOR UNDERLAYMENT
CUSHIONED VINYL FLOORING
- (C) ALL DOORS SHOWN ARE NEW AND OR REPLACEMENTS

FIRST FLOOR MECHANICAL GENERAL NOTES

- (AA) THE FIRST FLOOR UNIT WILL HAVE NEW ELECTRICAL SERVICE AND COMPLETE NEW WIRING AND OUTLETS. INSTALL HARDWIRED INTERCONNECTED FIRE AND CARBON DIOXIDE DETECTORS
- (BB) THE FIRST FLOOR UNIT WILL HAVE A NEW PLUMBING SYSTEM CONSISTING OF A ALL NEW PLUMBING FIXTURES, WATER LINES, DRAINS, AND DIRECT VENT HOT WATER HEATER LOCATED IN THE BASEMENT
- (CC) THE FIRST FLOOR UNIT WILL HAVE A NEW HVAC SYSTEM AND NEW DUCTING THROUGHOUT THE UNIT. THE UNIT WILL BE LOCATED IN THE BASEMENT.

FIRST FLOOR PLAN KEYED NOTES

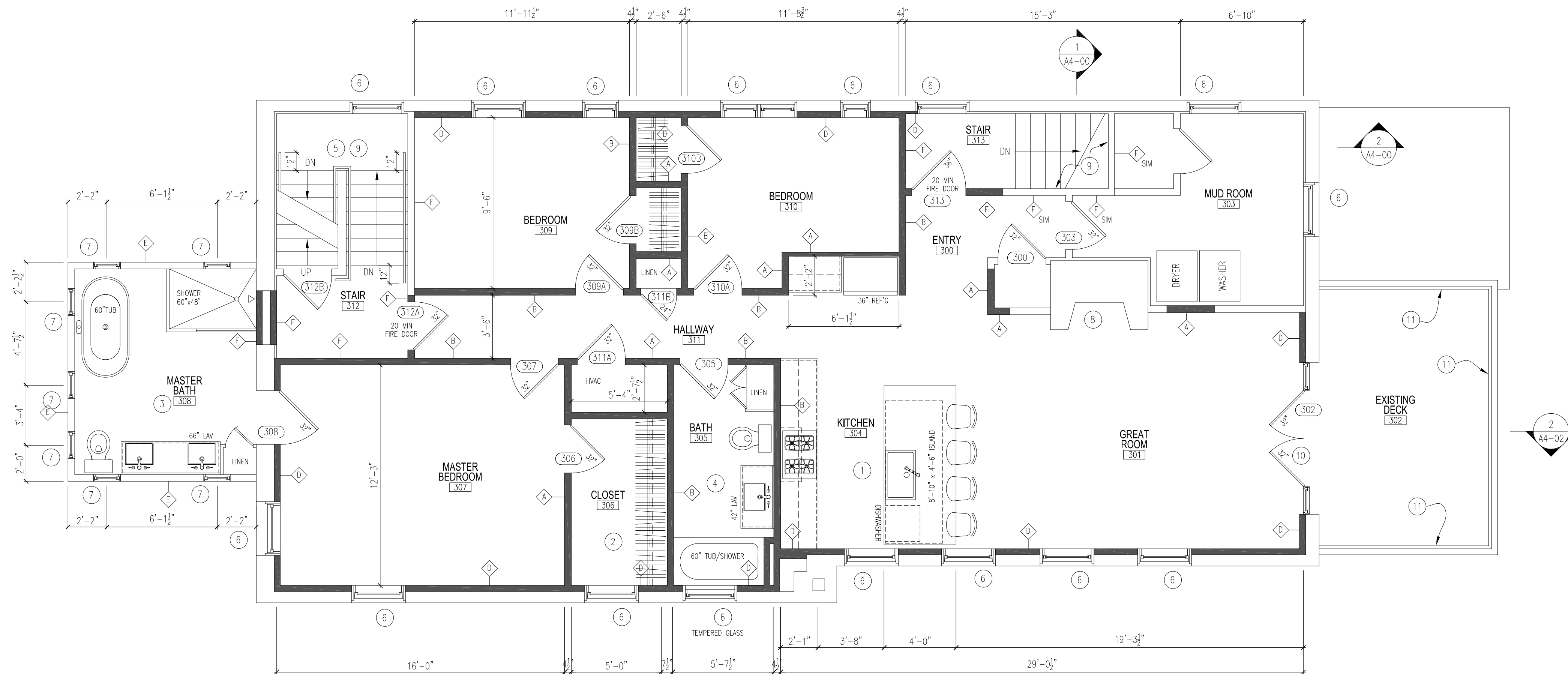
- (1) NEW KITCHEN LAYOUT. SEE THE OWNERS KITCHEN DESIGN PLANS FOR THE DETAILS
- (2) NEW MASTER CLOSET
- (3) NEW MASTER BATHROOM WITH AN ELONGATED RIM COMFORT HEIGHT TOILET, 84" LAVATORY W/ TWO SINKS, SOAKING TUB AND A WALK-IN TILE SHOWER
- (4) NEW BATHROOM WITH AN ELONGATED RIM COMFORT HEIGHT TOILET, 42" LAVATORY WITH ONE SINK, 60" TUB AND SHOWER UNIT
- (5) EXISTING STAIR TO HAVE NEW TREAD FINISHES AND HANDRAIL
- (6) NEW WINDOWS IN THE EXISTING OPENINGS. FIELD VERY THE SIZES
- (7) NEW WINDOWS TO BE CLEARSTORY. SEE THE EXTERIOR ELEVATIONS
- (8) EXISTING FIREPLACE TO REMAIN AND INSTALL AN ELECTRIC INSERT
- (9) THE EXISTING STAIR TO THE SECOND FLOOR UNIT TO REMAIN. PRESERVE AND REPAIR AS REQUIRED THE ONE HOUR STAIR ENCLOSURE. INSTALL 5/8" SHEETROCK BRAND FIRECODE C CORE 1 HOUR SA305 B-8 GYPSUM PANELS WHERE ANY PLASTER WAS DAMAGED OR REMOVED
- (10) THE EXISTING MASONRY EXTERIOR STAIR TO REMAIN
- (11) NEW WOOD FRENCH DOORS INSTALLED IN THE EXISTING WINDOW LOCATION. THE WALL TO BE CUT BELOW TO ALLOW FOR THE DOOR OPENING. DOOR TO HAVE ADA ALUMINUM THRESHOLD
- (12) NEW WOOD STOOP AND STAIR. SEE THE EXTERIOR ELEVATIONS AND DETAILS. THE RAILING ON THE EAST FACE TO BE SET TO BE REMOVED IF A LIFT IS INSTALLED. THE LANDING SHALL BE AT THE SAME ELEVATION AS THE FIRST FLOOR
- (13) THE EXISTING MASONRY BRICK WALL TO REMAIN EXPOSED
- (14) LOCATION OF A FUTURE LIFT
- (15) FUTURE ACCESSIBLE SIDEWALK TO THE FUTURE LIFT
- (16) EXISTING SIDEWALK
- (17) INSTALL NEW ADA HANDRAILS. SEE THE STAIR SECTIONS FOR THE DIMENSIONS
- (18) DASHED LINES REPRESENT 30x48 CLEAR FLOOR SPACE

F INTERIOR PARTITION
SCALE: 1 1/2" = 1'-0"E INTERIOR PARTITION
SCALE: 1 1/2" = 1'-0"D EXTERIOR PARTITION
SCALE: 1 1/2" = 1'-0"C INTERIOR PARTITION
SCALE: 1 1/2" = 1'-0"B INTERIOR PARTITION
SCALE: 1 1/2" = 1'-0"A INTERIOR PARTITION
SCALE: 1 1/2" = 1'-0"



NORTH

- 1 NEW KITCHEN LAYOUT. SEE THE OWNERS KITCHEN DESIGN PLANS FOR THE DETAILS
- 2 NEW MASTER CLOSET
- 3 NEW MASTER BATHROOM WITH AN ELONGATED RIM COMFORT HEIGHT TOILET, 84" LAVATORY W/ TWO SINKS, SOAKING TUB AND A WALK-IN TILE SHOWER
- 4 NEW BATHROOM WITH AN ELONGATED RIM COMFORT HEIGHT TOILET, 42" LAVATORY WITH ONE SINK, 60" TUB AND SHOWER UNIT
- 5 EXISTING STAIR TO HAVE NEW TREAD FINISHES AND HANDRAIL
- 6 NEW WINDOWS IN THE EXISTING OPENINGS. FIELD VERY THE SIZES
- 7 NEW WINDOWS TO BE CLEARSTORY. SEE THE EXTERIOR ELEVATIONS
- 8 EXISTING FIREPLACE TO REMAIN AND INSTALL AN ELECTRIC INSERT
- 9 THE EXISTING STAIR ENCLOSURE TO REMAIN. PRESERVE AND REPAIR AS REQUIRED THE ONE HOUR STAIR ENCLOSURE. INSTALL 5/8" SHEETROCK BOARD FIRECODE C CORE 1 HOUR SA305 B-8 GYPSUM PANELS WHERE ANY PLASTER WAS DAMAGED OR REMOVED
- 10 NEW WOOD FRENCH DOORS INSTALLED IN THE EXISTING WINDOW LOCATION. THE WALL TO BE CUT BELOW TO ALLOW FOR THE DOOR OPENING. INSTALL A NEW LINTEL. (2) 11 7/8" MICROLUM WITH (2) 2x4 STUD BEARING EACH END. SEE SECTION
- 11 THE EXISTING ROOF TO BE REINFORCED WITH 2x10 WOOD JOISTS @ 16" O.C. TO ALLOW THE USE AS A PORCH. SEE THE EXTERIOR ELEVATIONS AND DETAILS A4-02
- 12 NEW COMPOSITE RAILING SYSTEM. SEE THE EXTERIOR ELEVATIONS



THIRD FLOOR PLAN

SCALE : 1 / 4" = 1' - 0"



NORTH

GENERAL CONSTRUCTION NOTES

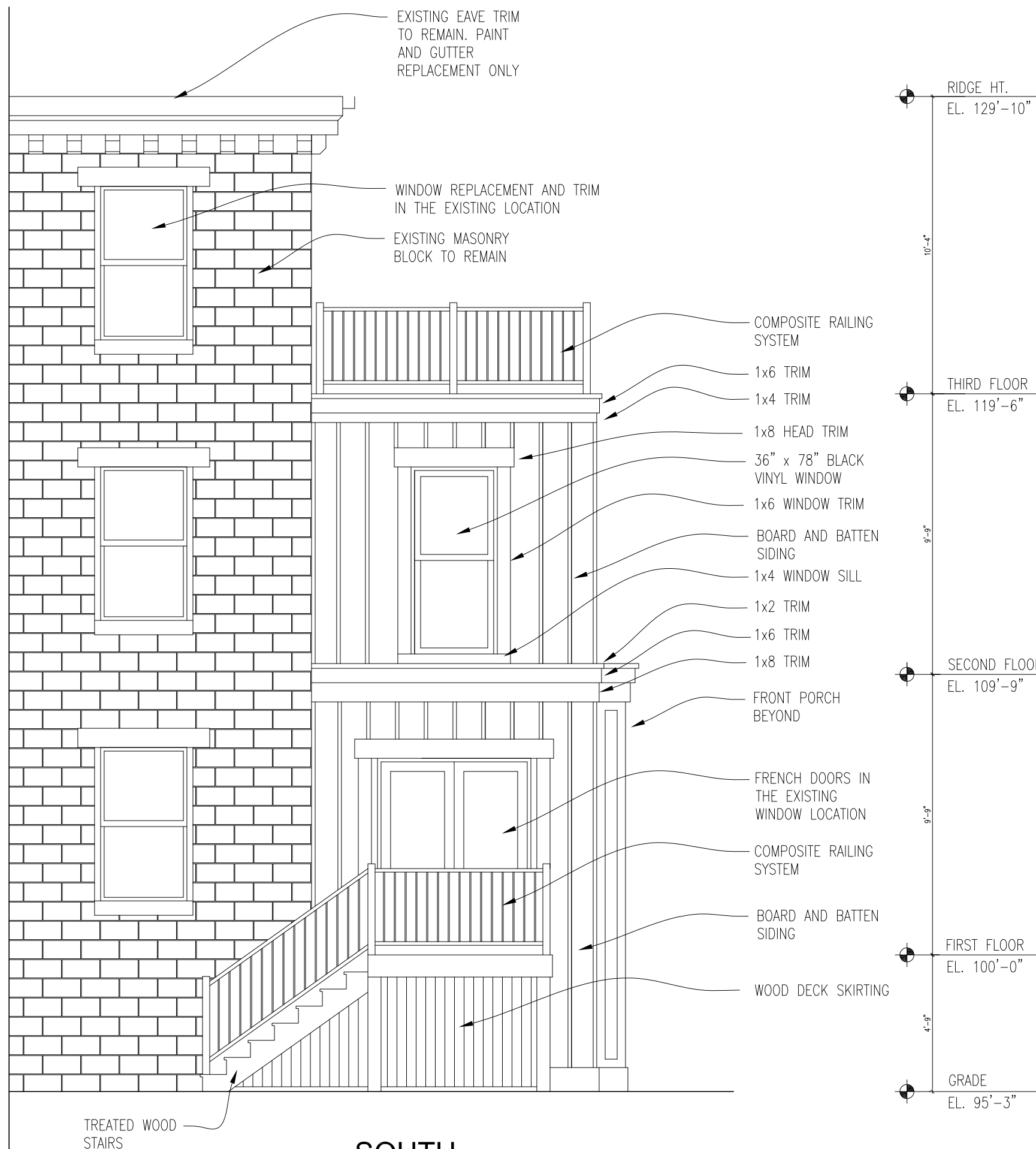
- (A) ALL EXISTING WALLS TO HAVE NEW 1/2" DRYWALL INSTALLED EXCEPT IN THE STAIR ENCLOSURES. THEY SHALL HAVE 5/8" SHEETROCK BRAND FIRECODE C CORE 1 HOUR SA305 B-8 GYPSUM PANELS
- (B) THE CEILING IN THE FIRST AND SECOND FLOOR TO HAVE:
5/8" SHEETROCK BRAND FIRECODE C CORE 1 HOUR SA305 B-8 GYPSUM PANELS
EXISTING 2x10 WOOD JOIST 16" O.C.
RC-1 CHANNEL OR EQUIVALENT 16" O.C.
FILL JOIST SPACE WITH ROCKWOOL INSULATION
EXISTING 19/32" T&G WOOD SUBFLOOR
1" LEVELROCK BRAND FLOOR UNDERLAYMENT
CUSHIONED VINYL FLOORING
- (C) ALL DOORS SHOWN ARE NEW AND OR REPLACEMENTS

THIRD FLOOR MECHANICAL GENERAL NOTES

- (AA) THE THIRD FLOOR UNIT WILL HAVE NEW ELECTRICAL SERVICE AND COMPLETE NEW WIRING AND OUTLETS. INSTALL HARDWIRED INTERCONNECTED FIRE AND CARBON DIOXIDE DETECTORS
- (BB) THE THIRD FLOOR UNIT WILL HAVE A NEW PLUMBING SYSTEM CONSISTING OF A ALL NEW PLUMBING FIXTURES, WATER LINES, DRAINS, AND DIRECT VENT HOT WATER HEATER LOCATED IN THE BASEMENT
- (CC) THE THIRD FLOOR UNIT WILL HAVE A NEW HVAC SYSTEM AND NEW DUCTING THROUGHOUT THE UNIT. THE UNIT WILL BE LOCATED IN THE HVAC CLOSET

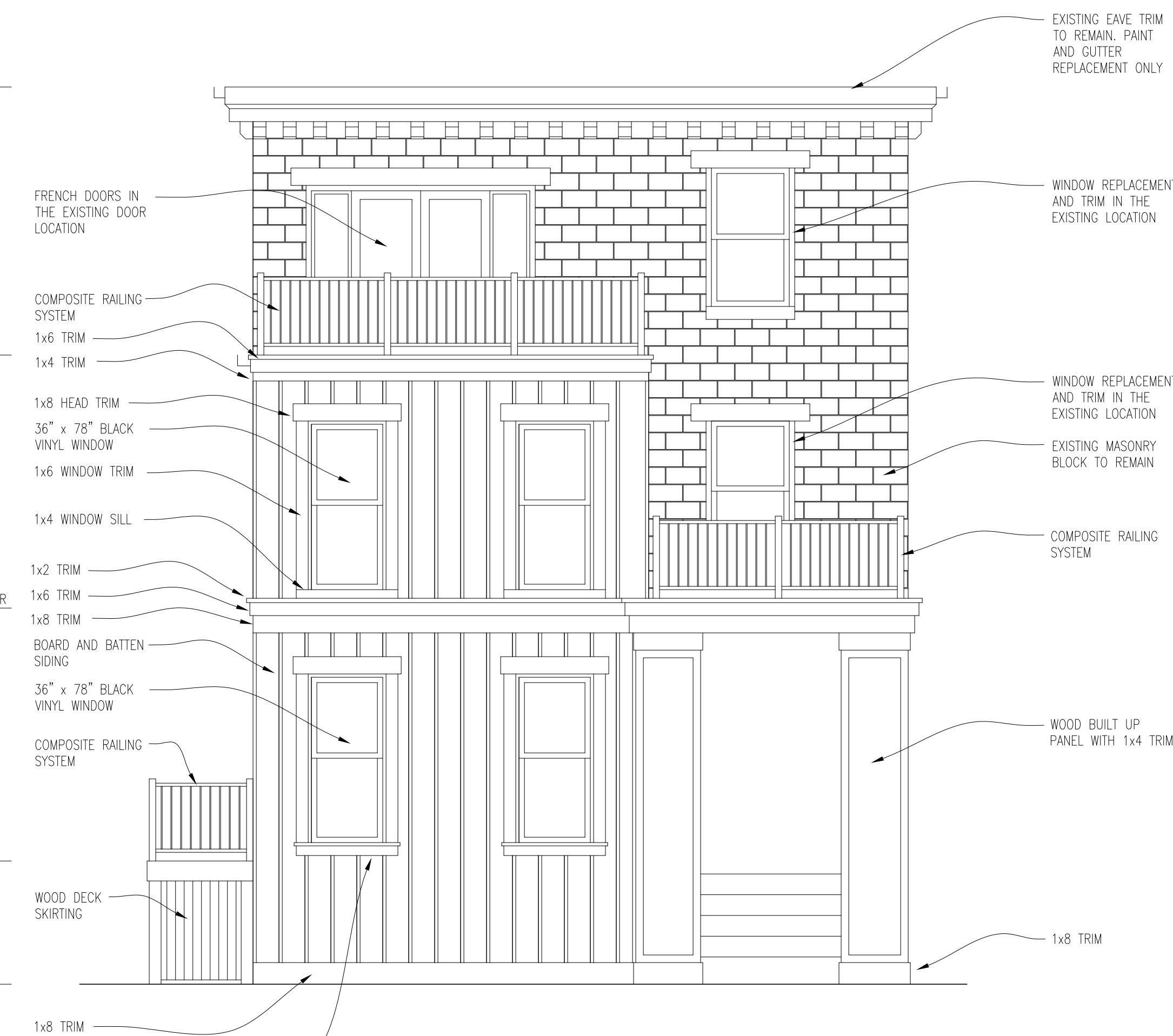
THIRD FLOOR PLAN KEYED NOTES

- (1) NEW KITCHEN LAYOUT. SEE THE OWNERS KITCHEN DESIGN PLANS FOR THE DETAILS
- (2) NEW MASTER CLOSET
- (3) NEW MASTER BATHROOM WITH AN ELONGATED RIM COMFORT HEIGHT TOILET, 84" LAVATORY W/ TWO SINKS, SOAKING TUB AND A WALK-IN TILE SHOWER
- (4) NEW BATHROOM WITH AN ELONGATED RIM COMFORT HEIGHT TOILET, 42" LAVATORY WITH ONE SINK, 60" TUB AND SHOWER UNIT
- (5) EXISTING STAIR TO HAVE NEW TREAD FINISHES AND HANDRAIL
- (6) NEW WINDOWS IN THE EXISTING OPENINGS. FIELD VERY THE SIZES
- (7) NEW WINDOWS TO BE CLEARSTORY. SEE THE EXTERIOR ELEVATIONS
- (8) EXISTING FIREPLACE TO REMAIN AND INSTALL AN ELECTRIC INSERT
- (9) THE EXISTING STAIR ENCLOSURE TO REMAIN. PRESERVE AND REPAIR AS REQUIRED THE ONE HOUR STAIR ENCLOSURE. INSTALL 5/8" SHEETROCK BRAND FIRECODE C CORE 1 HOUR SA305 B-8 GYPSUM PANELS WHERE ANY PLASTER WAS DAMAGED OR REMOVED
- (10) NEW WOOD FRENCH DOORS INSTALLED IN THE EXISTING WINDOW LOCATION. THE WALL TO BE CUT BELOW TO ALLOW FOR THE DOOR OPENING
- (11) NEW COMPOSITE RAILING SYSTEM TO REPLACE THE EXISTING HALF WALL. SEE THE EXTERIOR ELEVATIONS



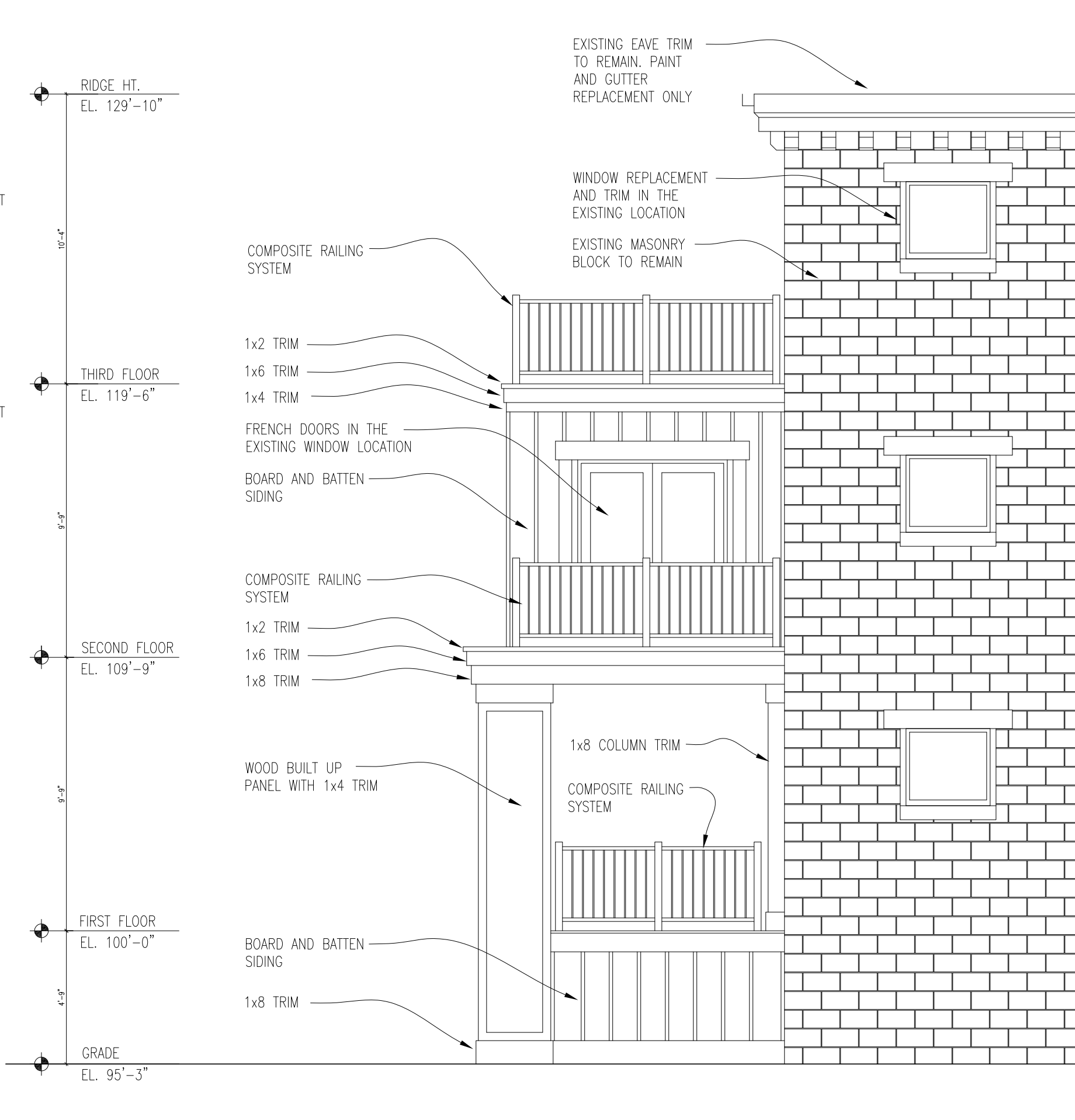
**SOUTH
EXTERIOR ELEVATION**

SCALE : 1 / 4" = 1' - 0"



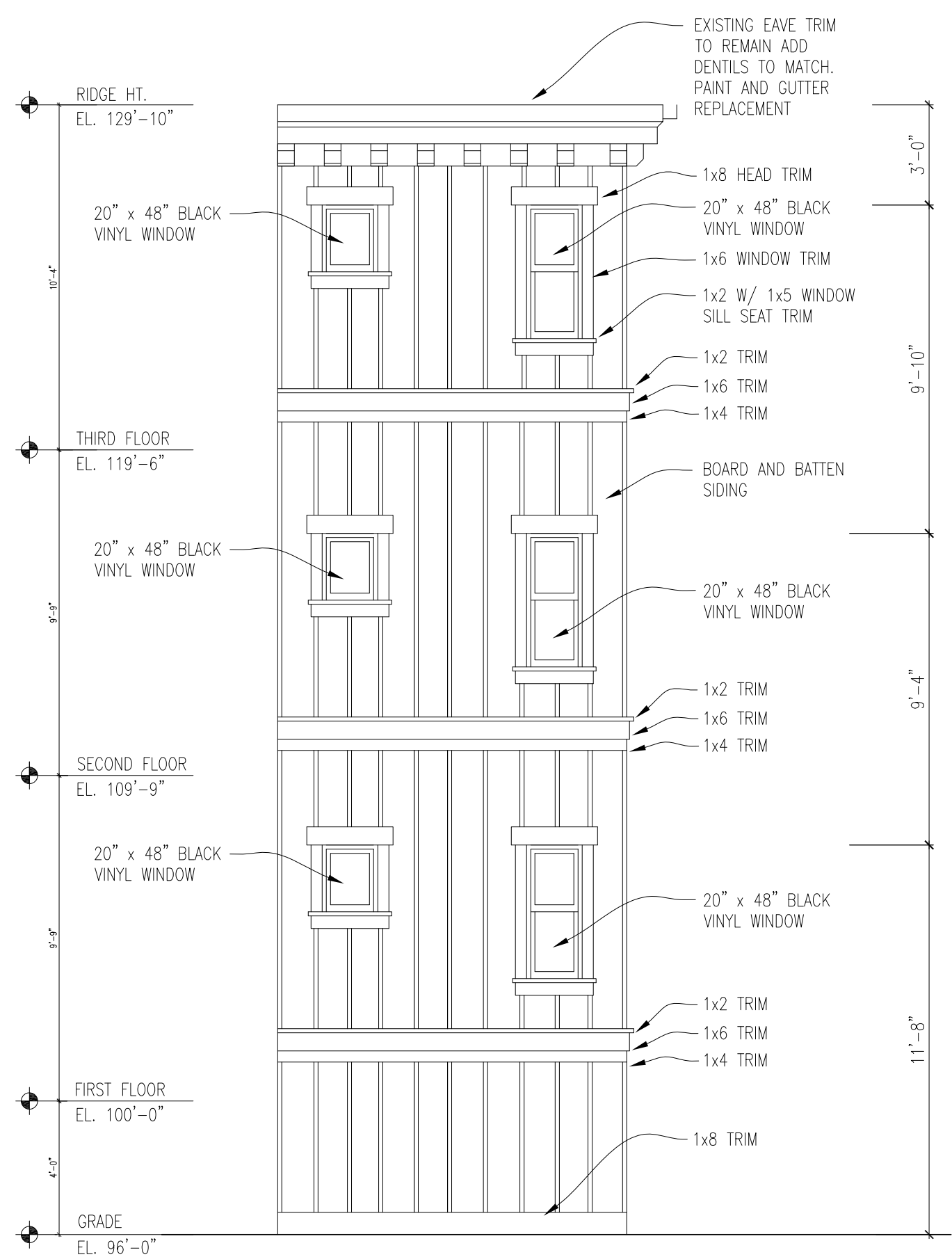
**EAST
EXTERIOR ELEVATION**

SCALE : 1 / 4" = 1' - 0"



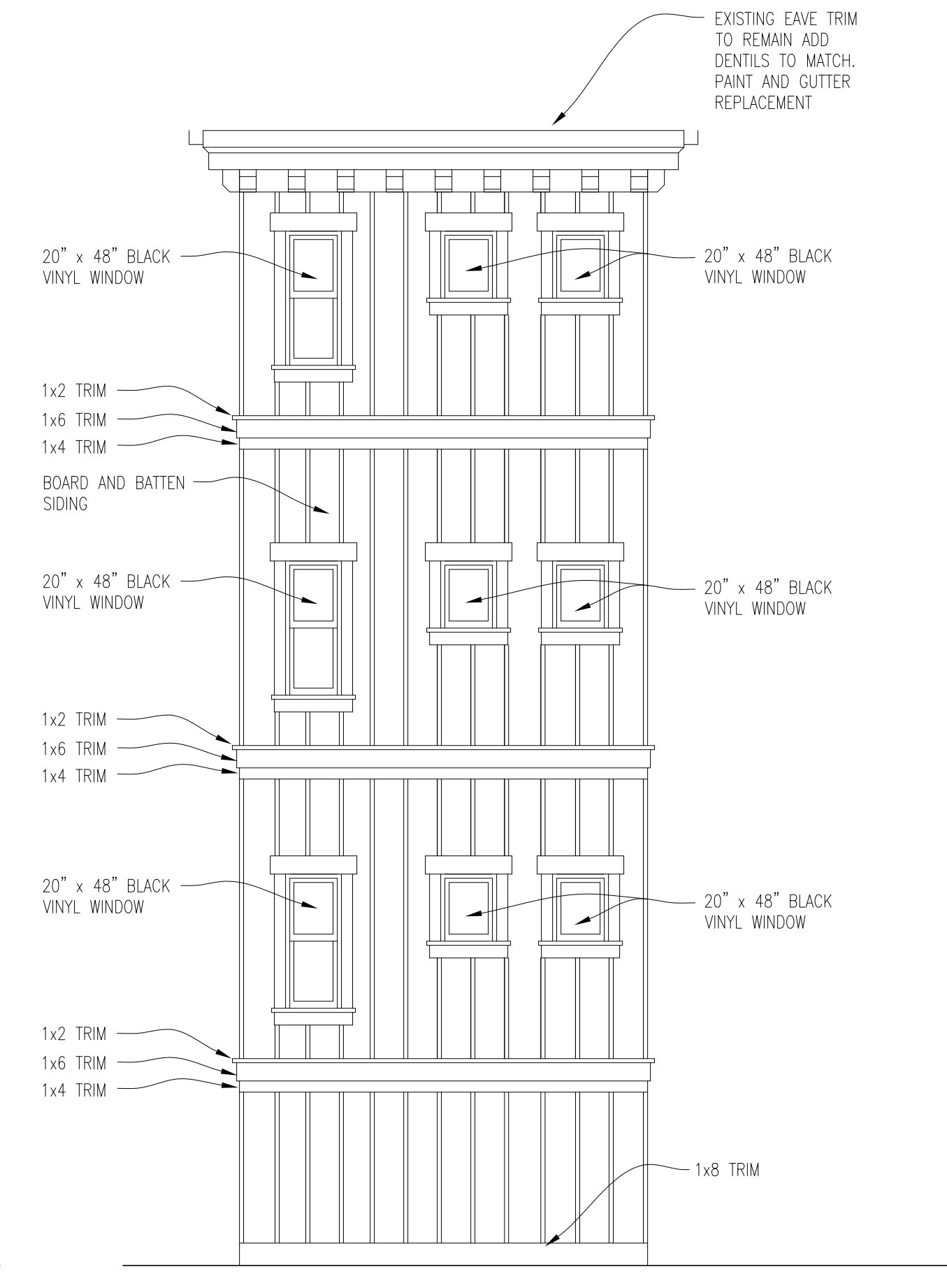
**NORTH
EXTERIOR ELEVATION**

SCALE : 1 / 4" = 1' - 0"



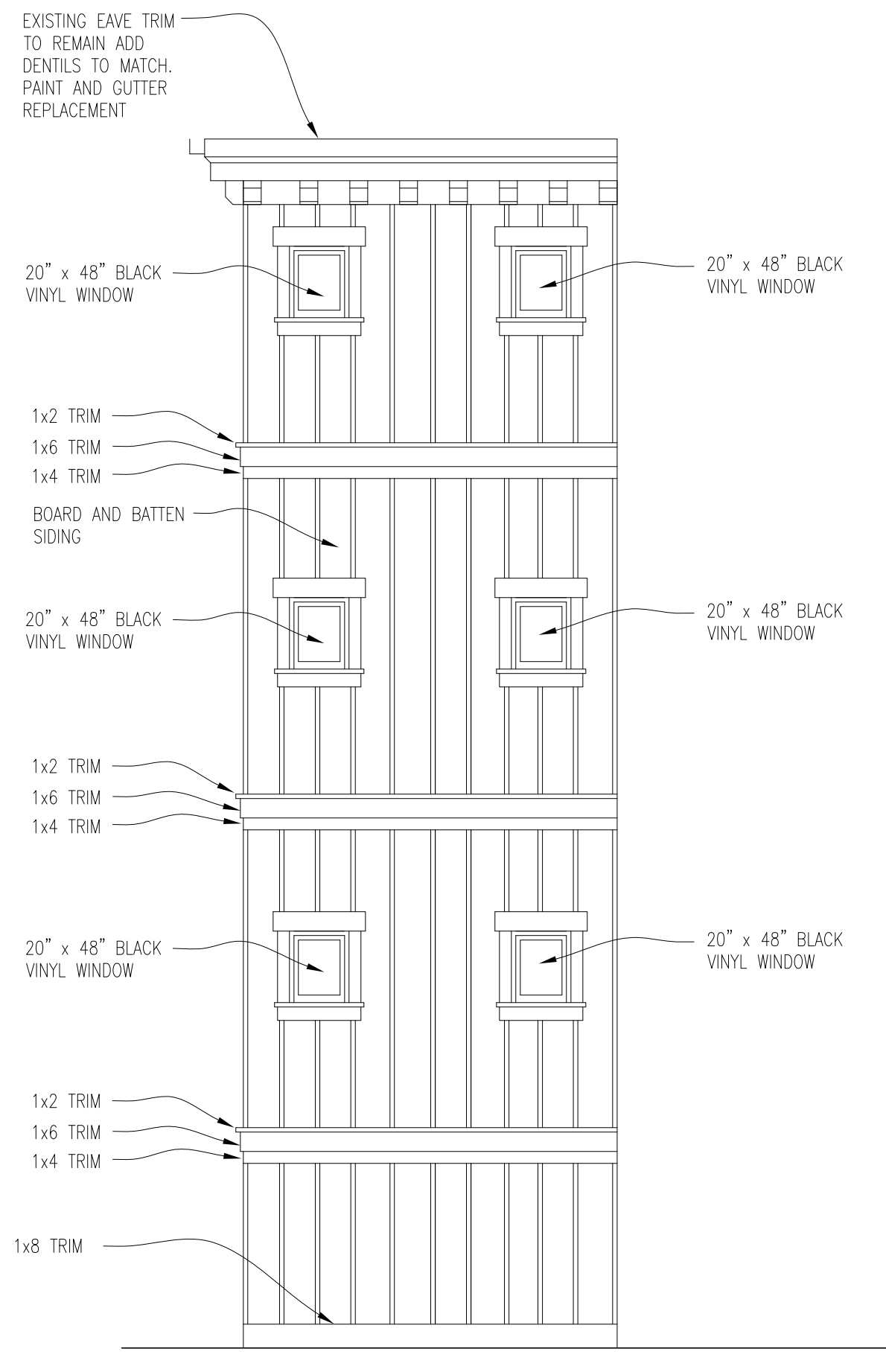
**NORTH
EXTERIOR ELEVATION**

SCALE : 1 / 4" = 1' - 0"



**WEST
EXTERIOR ELEVATION**

SCALE : 1 / 4" = 1' - 0"



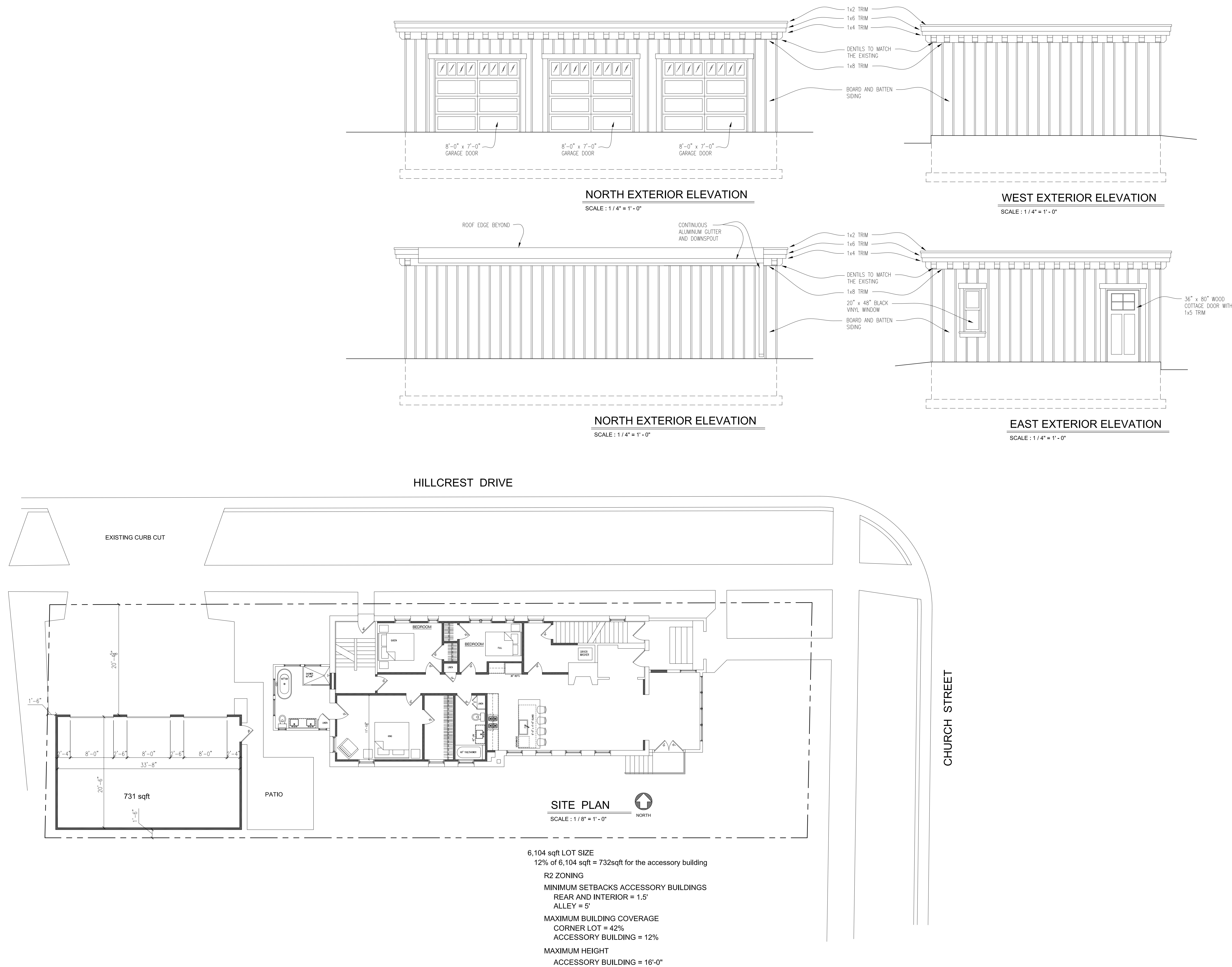
**SOUTH
EXTERIOR ELEVATION**

SCALE : 1 / 4" = 1' - 0"

PROPOSED REMODELING
1851 CHURCH ST
WAUWATOSA, WISCONSIN

JOB NO.:
2024054.00
DRAWN BY:
TEV IV

A2-06





Wauwatosa, WI

Staff Report

7725 W. North Avenue
Wauwatosa, WI 53213

File #: 25-0330

Agenda Date: 3/6/2025

Agenda #: 3.

6933 North Avenue - Wing Stop - RTU Screening

Architect

kolbrook design

828 DAVIS ST. SUITE 300
EVANSTON, IL 60201
OFFICE 847.492.1992 | FAX 312.453.0699
IL DESIGN FRM REG# 164000065

CIVIL ENGINEER

STRUCTURAL ENGINEER

LANDSCAPE COMPANY

MEP ENGINEER

DEVELOPER

Seal



PROJECT: **WINGSTOP RESTAURANT**

6833 W North Ave
Wauwatosa, WI 53213

Drawing Issue	
Description	Date
FOR DESIGN REVIEW BOARD	02/21/2025

Drawn By:

Checked By:

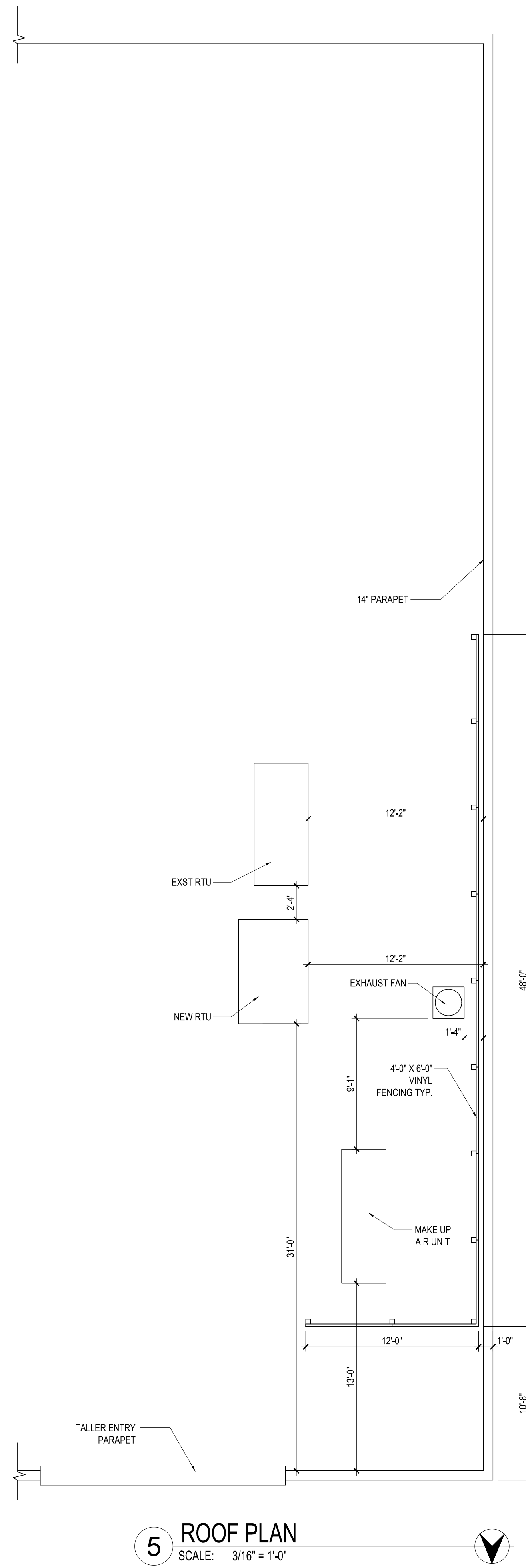
Sheet Title

ROOF SCREENING

Sheet No.

A01-01

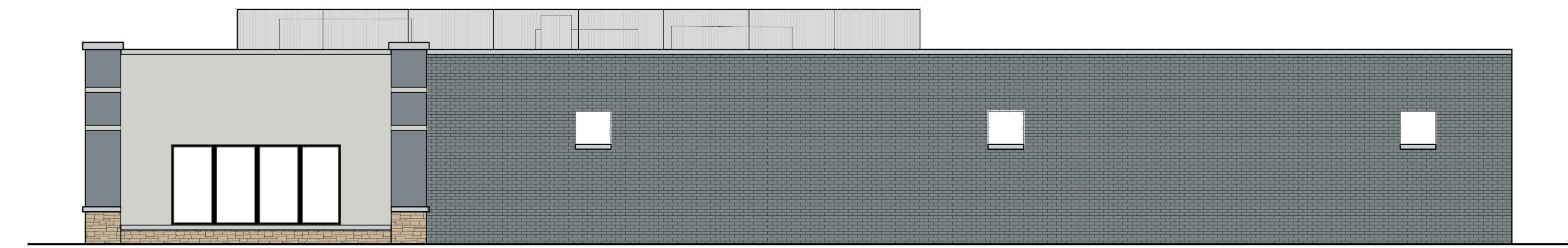
Kolbrook Job No.	1475.071	Consultant Job No.	-
---------------------	----------	-----------------------	---



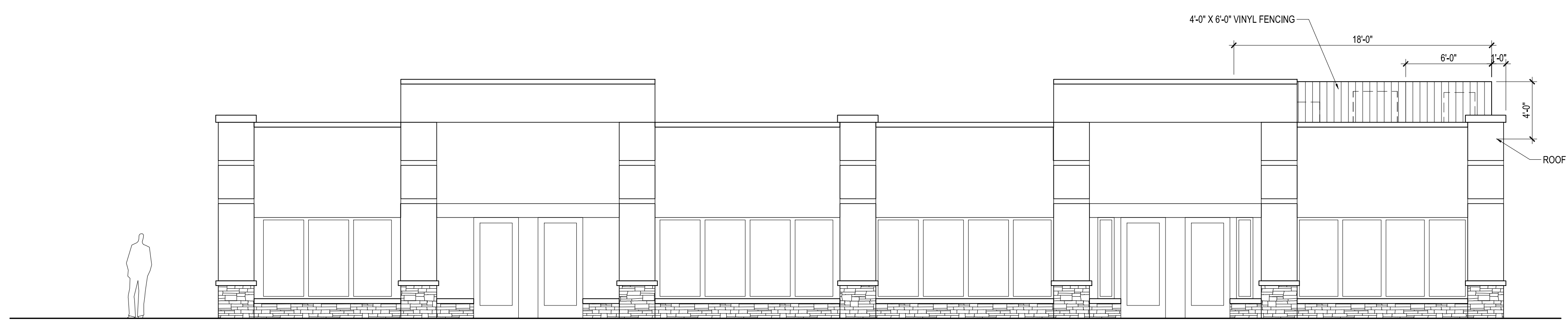
5 ROOF PLAN
SCALE: 3/16" = 1'-0"



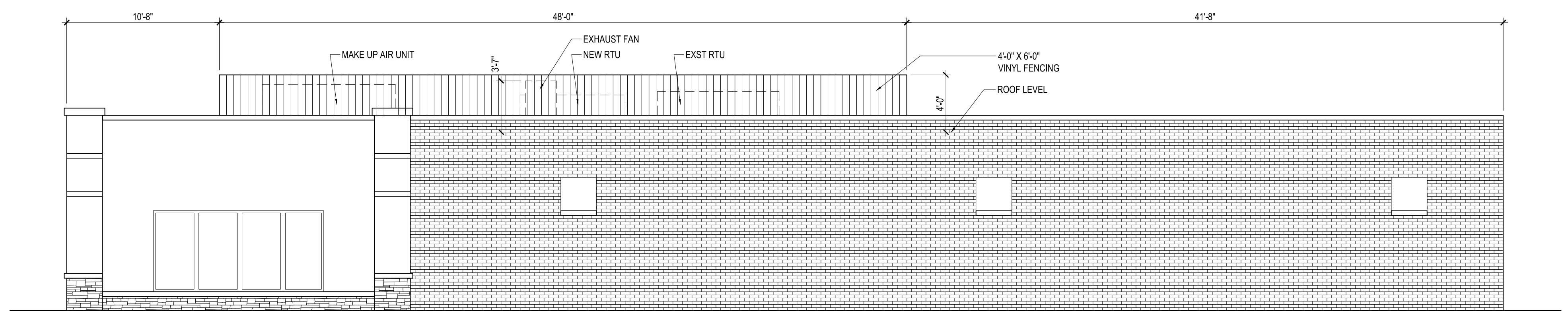
4 NORTH ELEVATION
SCALE: 3/16" = 1'-0"



3 WEST ELEVATION
SCALE: 3/16" = 1'-0"



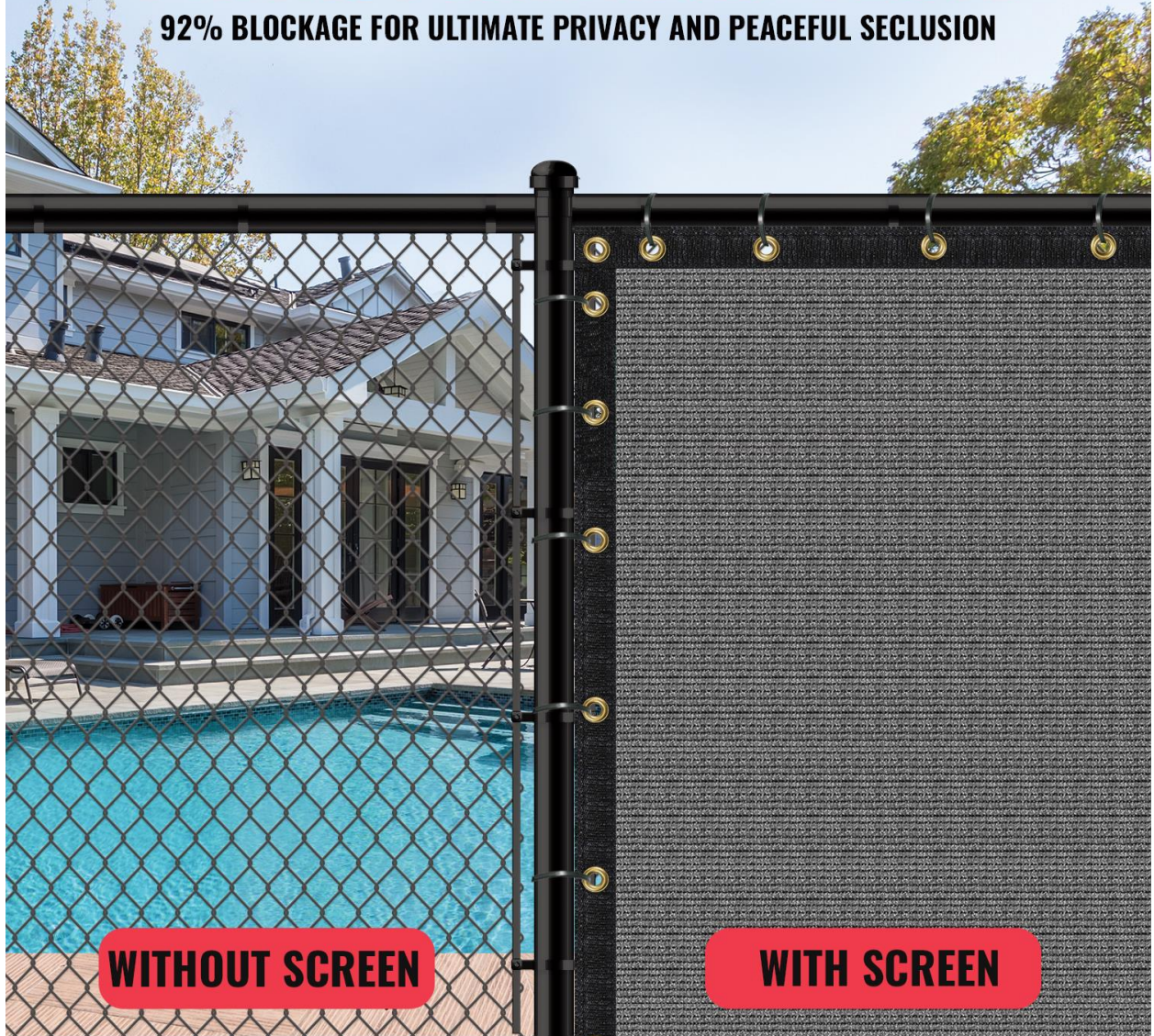
2 NORTH ELEVATION
SCALE: 3/16" = 1'-0"



1 WEST ELEVATION
SCALE: 3/16" = 1'-0"

PRIVACY ENHANCED FENCE

92% BLOCKAGE FOR ULTIMATE PRIVACY AND PEACEFUL SECLUSION



WITHOUT SCREEN

WITH SCREEN

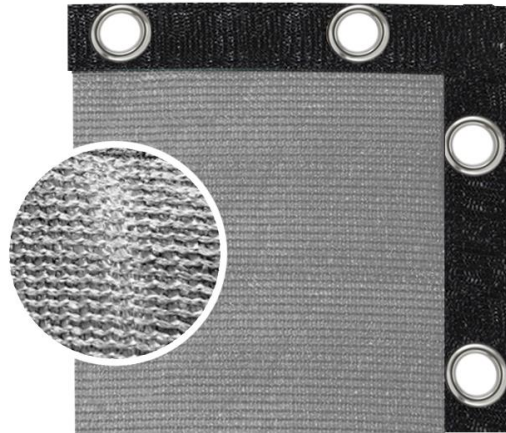
SEAL TECH SUPERIORITY

THE CLEAR CHOICE IN QUALITY AND DURABILITY



SEAL TECH QUALITY

- ✓ 200 GSM
- ✓ Prime Non-Recycled Material
- ✓ Non-Rust Brass Grommets
- ✓ 92% Blockage
- ✓ 1.5-Inch Edge Binding



OTHER BRANDS

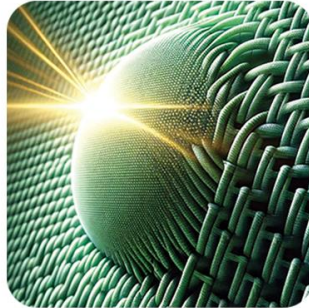
- ✗ 130 GSM
- ✗ Recycled Material
- ✗ Aluminum Grommets
- ✗ 80% Blockage
- ✗ 1-Inch Edge Binding

DURABLE, FUNCTIONAL SCREEN

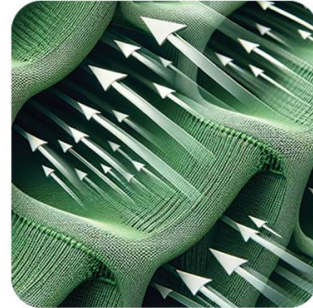
SUPERIOR FABRIC: UNMATCHED ELEMENTAL RESISTANCE



ALLOWS WATER FLOW



BLOCKS UV RAYS



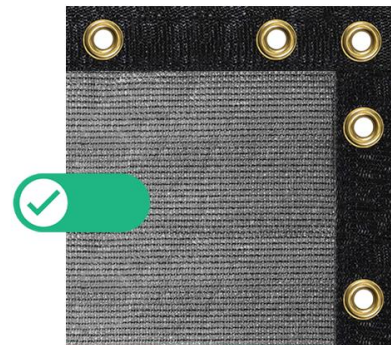
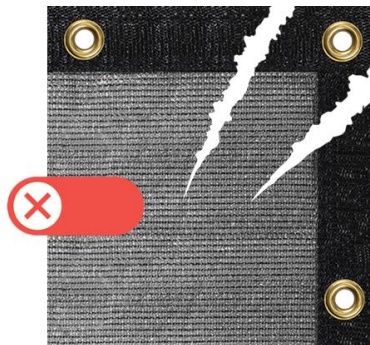
NO AIR TRAPPING

TRIPLE GROMMET CORNER

SEAL TECH'S WAY FOR BEST DURABILITY



SINGLE OR DOUBLE GROMMET: HIGHER RISK OF RIPPING



3 GROMMETS PER CORNER

STRATEGIC GROMMET SPACING

EVERY 24 INCHES HORIZONTALLY, EVERY 12 INCHES VERTICALLY

QUICK SETUP



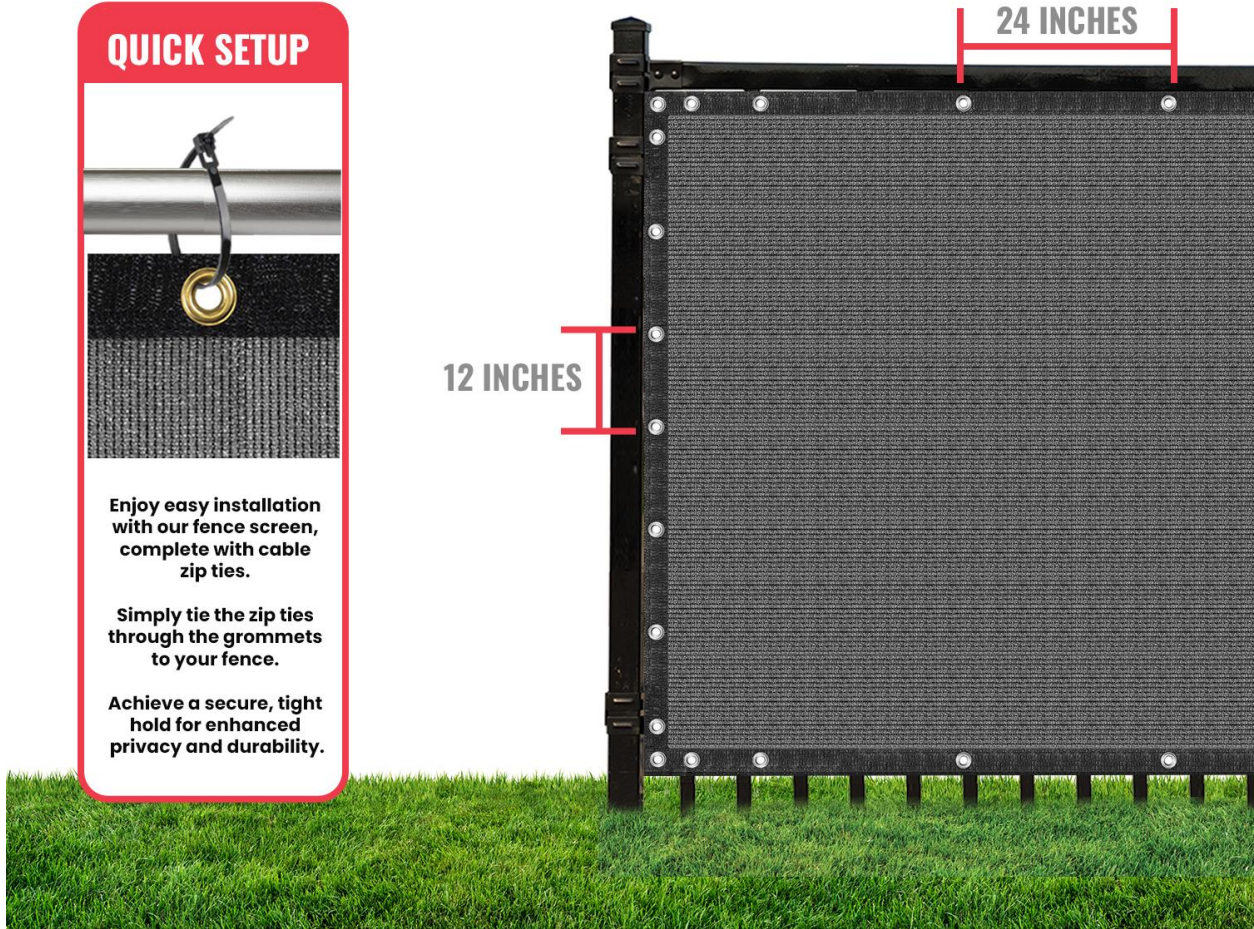
Enjoy easy installation with our fence screen, complete with cable zip ties.

Simply tie the zip ties through the grommets to your fence.

Achieve a secure, tight hold for enhanced privacy and durability.

12 INCHES

24 INCHES



PACKAGE CONTENTS

EVERYTHING INCLUDED FOR QUICK, EFFORTLESS SCREEN INSTALLATION

1

FENCE PRIVACY SCREEN



2

CABLE ZIP TIES

